



Travel to  
Windy Arbor  
Primary School

www.solihull.gov.uk/schoolstreets

**Modeshift STARS** is a national schools award scheme supported by the Department of Transport. Recognising schools demonstrating excellence in sustainable travel, which includes cycling and walking. To find out more about the awards visit [www.modeshiftstars.org](http://www.modeshiftstars.org)

**Windy Arbor Primary School**  
Woodlands Way,  
Chelmsley Wood,  
Birmingham B37 6RN

## Solihull School Streets

### What is it?

Many schools across the Borough experience challenging traffic scenes at the beginning and end of each school day. 'School Streets' is a project led by Solihull Council which seeks to address such issues through the introduction of restrictions that will exclude traffic from entering, leaving or travelling around the streets surrounding schools at key times of the day, the aim being to create a predominantly car free zone. Windy Arbor Primary School has been identified as a school that would benefit from being part of the project.

### Why are we doing it?

We are aiming to create a safer, more pleasant environment and, through the scheme, will be promoting active travel to school by walking, scooting and cycling. This in turn will reduce congestion and pollution in the area.

The anticipated benefits of the scheme include:

- A reduction in congestion, pollution and traffic speed around the school gates creating a safer environment for all our children.
- An improvement in air quality outside school.
- An increase in walking, scooting, cycling and active lifestyles for families within a more pleasant environment.
- Improvements in levels of childhood obesity.



*Walking is good because you get air and exercise!* - Ronnie

### How will it work?

The Council will introduce a Traffic Regulation Order.

The Traffic Regulation Order will prohibit any motor vehicle without a permit or valid exemption (Blue badge holders or emergency services) from entering or driving through the restricted zone when the scheme is in operation.

The scheme will operate on weekdays only between **8:25** and **9:10** am and again between **2:45** and **3:45** pm.

The restrictions will also introduce a new 20mph speed limit.

Gateway signage will be put in place at the entrance of the restricted zone.

### How will it be enforced?

The Police will have powers to enforce the new restrictions. Anyone caught driving in the restricted zone whilst it is active without a valid permit or exemption can be issued with a Fixed Penalty. The Police have been consulted on these proposals and are actively engaged.

### Parents

Part of **Woodlands Way**, as highlighted on the map, will be closed to traffic in the mornings and at home time which will create a safer, healthier and more pleasant environment for those who walk, scoot or cycle to school, and will hopefully encourage more parents to leave the car at home.

For those who live further away, we ask that they park away from the school and walk the last five or ten minutes.

The streets around the school will not be completely traffic-free as residents will have permits to drive in the area during the restricted times and there will also be an exemption for emergency vehicles and blue badge holders. There will also be a new 20mph speed limit.

Gateway signage will be put in place at the entrance of the restricted zone.

### Residents

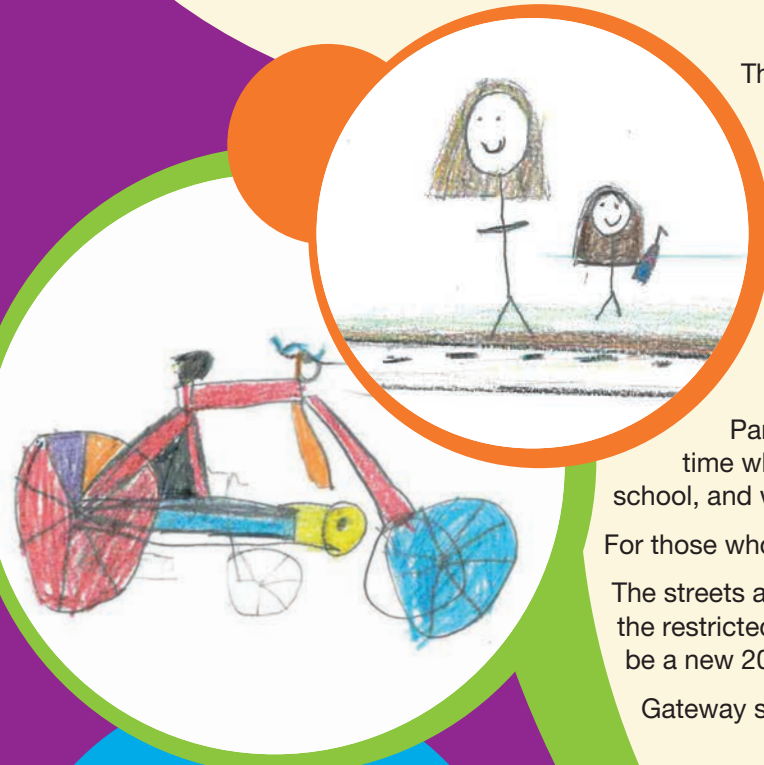
Each residence within the streets affected by the restrictions will be issued with two permits. If additional permits are required then please contact [schoolstreets@solihull.gov.uk](mailto:schoolstreets@solihull.gov.uk) stating your reason for requesting additional permits.

### Blue Badge Holders

If you have a blue badge then the restriction does not apply however a permit will be required if anyone else drives the car at other times. Remember, your badge should be prominent and displayed at all times.



*'Walking is healthy because you get fresh air and it's easy to walk to school.'*  
- Poppy

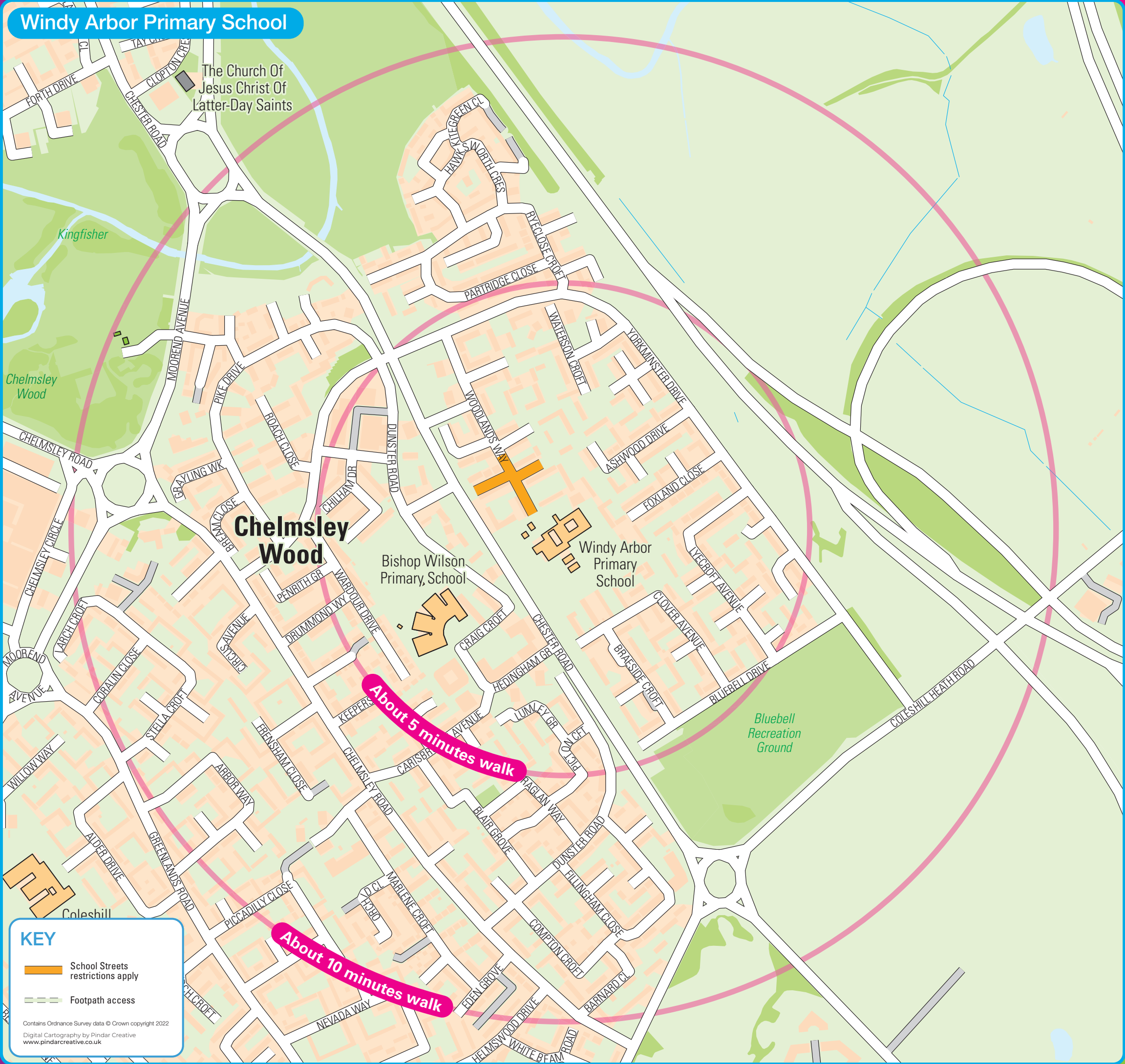


*'Walking is healthy because you get more exercise and don't use petrol to get to school and cars pollute the air so it is better.'*  
- Oliver





# Windy Arbor Primary School



**KEY**

- School Streets restrictions apply
- - - Footpath access

Contains Ordnance Survey data © Crown copyright 2022  
Digital Cartography by Pindar Creative  
www.pindarcreative.co.uk

'walking is healthy for exercise and is good for the environment.'

- Lily

'I think walking is healthy because it is really good exercise for my legs.'

- Jacob