

Induction Pack
for members of multi-agency boards and
partnerships in Solihull

Our integrated public service approach

Last updated: 2nd October 2023

This pack provides members of Solihull multi-agency boards and partnerships (which oversee or co-ordinate services for our residents) with the key information you need.

It covers:

- Solihull overview;
- 'Common purpose' across all our Solihull boards and partnerships;
- The remit, responsibilities and membership of each of the main multi-agency boards and partnerships; and
- An overview of the relationships between them.

Solihull – who are we?

216,000 residents

2 constituencies: Meriden and Solihull

17 council wards



1 local authority

1 NHS Integrated Care Board

3 NHS Foundation Trusts (and we also commission services from Coventry & Warwickshire and South Warwickshire NHS Partnership Trusts)



Solihull Local Policing Unit

Solihull Fire Station

Solihull Community Housing

124 CQC registered social care providers

16 Parish and Town Councils

800+ active community, voluntary and faith organisations and groups



5 school collaboratives involving 76 primary, secondary and special schools

3 locality areas: north, east and west, each supporting populations of 50-70,000

5 Primary Care Networks made up of 24 GP practices

Part of Birmingham & Solihull ICS and West Midlands Combined Authority.

Our common purpose and ambition

We are part of the Birmingham and Solihull Integrated Care System (ICS).

Our vision is “The healthiest place to live and work driving equity in life chances and health outcomes for everyone”.

Our ICS strategic goals are to:

- Reduce the gap in life expectancy between the best and worst areas
- Increase the contribution of health partners to the social and economic development of Birmingham and Solihull
- Reduce infant mortality
- Enable rapid access to diagnostic, emergency and elective care services
- Reduce mental health prevalence and ensure those who need mental health care can access it locally
- Early intervention for children and older people

For Solihull, this means being a great place for people to live and for our staff to work.

What we are trying to achieve together

Tackling inequalities: We will work towards addressing the long-standing causes of inequality.

Strengthening early intervention: We will empower people to self-care and support others to stay well. Using shared local intelligence, we will target early intervention services to enable people to stay as independent and well as possible, for as long as possible.

Using the 'Solihull £' to best effect: We will support delivery at the level that delivers the best outcomes for local people – neighbourhood, locality, borough and beyond.

Co-ordinated services: People experience a 'one team approach' where staff from different organisations work together seamlessly.

How we will work together for Solihull people and communities

Solihull partners have previously agreed how we will work together as partners across all our multi-agency boards. This is known as our '**6 Cs**' framework:

Connections: between boards and between key individuals will be strong, to ensure we are making the right links to have an effective impact.

Consistency: doing things in a standardised way to improve efficiency and ease of navigation of our arrangements.

Coordination: making sure our plans and priorities are coherent and work well together, and that the right people are sighted on what we are doing.

Communication: ensuring we communicate with clarity, conciseness and consistency as a group between ourselves, partners and the communities we serve

Working together across our Boards is underpinned by the ethos of **co-operation** and **commitment**.

Principles into practice

We will:

- Use a set of *common outcomes* that are meaningful to people across Solihull and measure our progress against these. All organisations will be accountable for success.
- Be *open and transparent* in our decision making with governance arrangements that support action and make the right decision the easiest decision to make.
- Develop our system so that it better promotes *self-care* and is easy for everyone to understand and use.
- With our workforce, identify what is needed to develop our system and to support the associated *workforce and cultural changes*.
- Create capacity across the system to enable positive change and support individuals and teams to work as *one Solihull workforce*.
- Display *creativity* to solve problems, learning from each other and from best practice

Key multi-agency boards and partnerships

Solihull Health and Wellbeing Board

Chair: Karen Grinsell, Deputy Leader & Lead Member for Partnerships and Wellbeing

Solihull Place Committee

Chair: Chief Executive, Solihull MBC

Community Safety Partnership: 'Safer Solihull'

Chair: Borough Commander, West Midlands Police.

The Domestic Abuse Partnership Board and Exploitation Reduction Delivery Group are among the boards reporting to the Community Safety Partnership.

Solihull Safeguarding Adults Board

Independent Chair: Sue Ross

Solihull Safeguarding Children Partnership

Independent Scrutineer: Beate Wagner

Priorities on a Page 2023-24

Solihull Safeguarding Children Partnership (SSCP), Solihull Safeguarding Adults Board (SSAB) and the Community Safety Partnership (CSP) work to safeguard children, young people, and adults. The Domestic Abuse Partnership Board (DAPB) reports into Community Safety Partnership and oversees activity to prevent and reduce domestic abuse. The Place Committee is a formal subcommittee of the Integrated Care Board (ICB). The Health and Wellbeing Board (H&WB) needs to maintain an oversight of the work of each Board/Partnership to inform delivery of its own function of improving the health and wellbeing of the people in Solihull. Boards and Partnerships will respond to new and emerging issues as they arise.

Health and Wellbeing Board



Accountable for identifying priority areas and ensuring that services work together to improve health and wellbeing of the local population. It has a system assurance role in relation to safeguarding of vulnerable people.

Priorities: First 1001 days from conception to age 2, Inclusive growth and employment, Promoting independence in later life, Social connectedness, Impact of the Covid-19 pandemic.

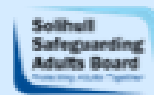
Safeguarding Children Partnership



Responsible for challenging partner agencies on their success in ensuring children, young people and families are kept safe. Their annual report is taken to the Health and Wellbeing Board which has a system oversight role.

Priorities: Implementation of Solihull's Neglect Strategy, Early Help arrangements and Continuous Improvement and Learning.

Safeguarding Adults Board



Responsible for challenging partner agencies on their success in ensuring adults are kept safe. The annual report is taken to the Health and Wellbeing Board which has a system oversight role.

Priorities: To improve our understanding of who Solihull's communities are and use this to improve the accessibility and quality of safeguarding information as well as service development, to understand from Solihull's communities and those with lived experience of safeguarding, what they need from an effective safeguarding response and act on this, a robust response to financial abuse.

Safer Solihull (Community Safety Partnership)



Work to protect the local communities from crime and to help people feel safer.

Priorities: Violence and the Serious Violence Duty (focus on Solihull, Chelmsley Wood and Shirley Town centres), Improved communications and community engagement, Data intelligence, Addressing substance misuse/Harm to Hope.

Domestic Abuse Partnership Board

Delivers strategic and partnership co-ordination of activity designed to prevent and reduce the impact of domestic abuse.

Priorities: Prevention and Early Identification, Protection, Strengthening Accountability, and Partnership

ICB Place Committee

The Place Committee is a formal subcommittee of the Integrated Care Board (ICB) to formalise place working and to delegate responsibility and control of functions and budgets.

Priorities: Integrating Community Services, Improving prevention and early intervention, Improving mental health (all age), Reducing health inequalities, Establishing a Community & Wellbeing hub at Kingshurst, Delivering the Primary Care Strategy.

Solihull Health and Wellbeing Board

- Health and Wellbeing Boards (HWBB) were established under the Health & Social Care Act 2012 to act as a forum in which key leaders work together to improve the health and wellbeing of the local population.
- The HWBB is a statutory committee of the Local Authority charged with promoting greater integration and partnership working between the NHS, Public Health and local government. It has a statutory duty to produce a Joint Strategic Needs Assessment and a Health and Wellbeing Strategy. Also, to sign-off Better Care Fund plans. It has a key role in system assurance and currently fulfils the statutory requirement for a Children's Trust Board to improve outcomes for children and young people.
- The Council, Integrated Care System and Healthwatch Solihull are statutory members. In Solihull, we also have broader representation - police, fire, housing, secondary healthcare, mental health, the Schools Accountability Board and the voluntary sector – recognising the importance of working together as a whole system to address health and wellbeing.
- The Board takes a 'do, sponsor, watch' approach. This helps it to focus on the big issues (through its five priorities) and support a wider of set activities that contribute to addressing inequalities and promoting integration

Solihull Place Committee

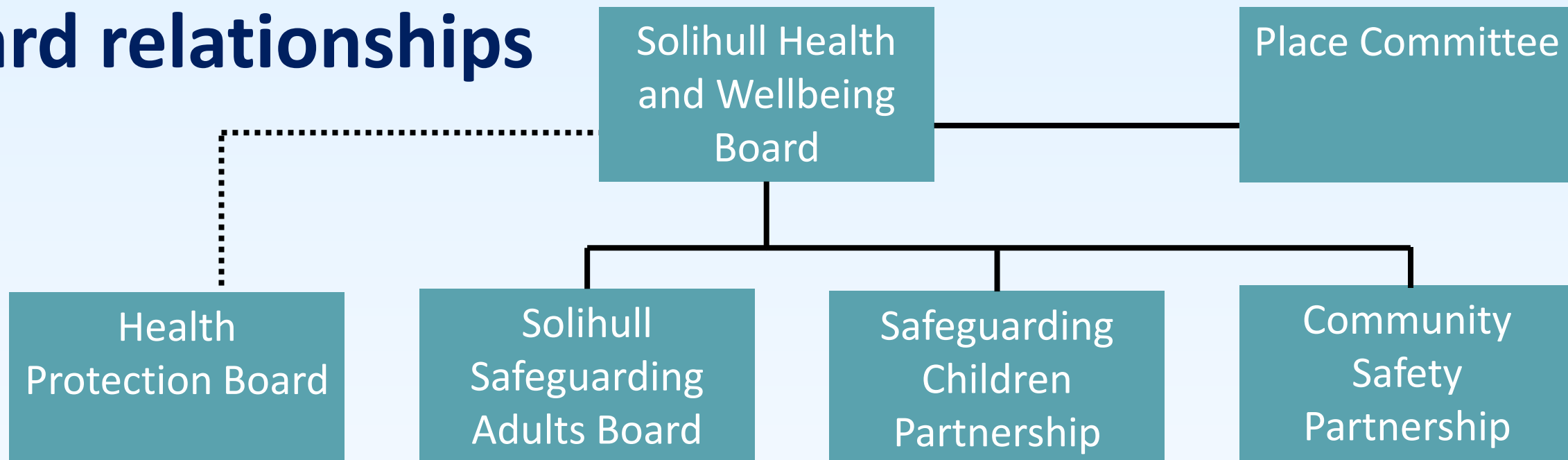
- The Place Committee is a formal sub committee of the Integrated Care Board (ICB) to formalise place working and to delegate responsibility and control of functions and budgets.
- The functions are:
 - Provide community leadership and engagement
 - Commissioning powers for community services
 - Joint responsibility with the ICB for the Primary Care Strategy
 - Responsibility for determining the local outcomes they expect the who system to delivery on behalf of the communities they serve
 - Joint responsibility with ICB for the distribution of the Fairer Futures Fund
- Membership includes: Chief Executive, Solihull MBC (Chair), ICB Executive leads, Community Integrator rep, Primary Care Provider rep, NHS community service rep, Public Health, Adult Social Care, Children's Social Care, VCSE, Healthwatch, Police, SCH
- Terms of Reference to be reviewed by Summer 2023

Solihull Place Committee Priorities

<u>Key Themes</u>
Integrating Community Services
Improving prevention and early intervention
Improving Mental Health (all age)
Reducing health inequalities
Establishing a Community and Wellbeing hub at Kingshurst
Delivering the Primary Care Strategy

<u>Enablers</u>
Fairer Futures Fund
Outcomes Framework
Place-based Commissioning
Quality Oversight and Regulation
Multi- agency Boards Review
Population Health Management
Infrastructure and Estates
Community engagement and co-production
Engagement and involvement of the VCFSE sector

Board relationships



The **Health and Wellbeing Board** is accountable for identifying priority areas and ensuring that services work together. It has a system assurance role in relation to safeguarding of vulnerable people.

The **Safeguarding Adults Board** and the **Safeguarding Children Partnership** are responsible for challenging partner agencies on their success in ensuring children, young people and adults are kept safe. Their annual reports are taken to the Health & Wellbeing Board which has a system oversight role.

Safer Solihull (the Community Safety Partnership) is made up of representatives from the police, local authorities, fire and rescue authorities, health and probation services (the 'responsible authorities'). The responsible authorities work together to protect their local communities from crime and to help people feel safer.

The **Health Protection Board's** purpose is to develop, co-ordinate and oversee the implementation of an effective, multi-agency Solihull-wide health protection, prevention and response to reduce morbidity and mortality from communicable diseases.



The Care Act 2014 is the legal framework for Safeguarding Adult Boards. Section 42 requires local authorities to establish a Safeguarding Adults Board to help and protect cases where an adult:

- a) Has needs for care and support (whether or not the authority is meeting any of those needs) and
- b) Is experiencing, or at risk of, abuse or neglect, and
- c) As a result of those needs is unable to protect himself or herself against the abuse or neglect or the risk of it.

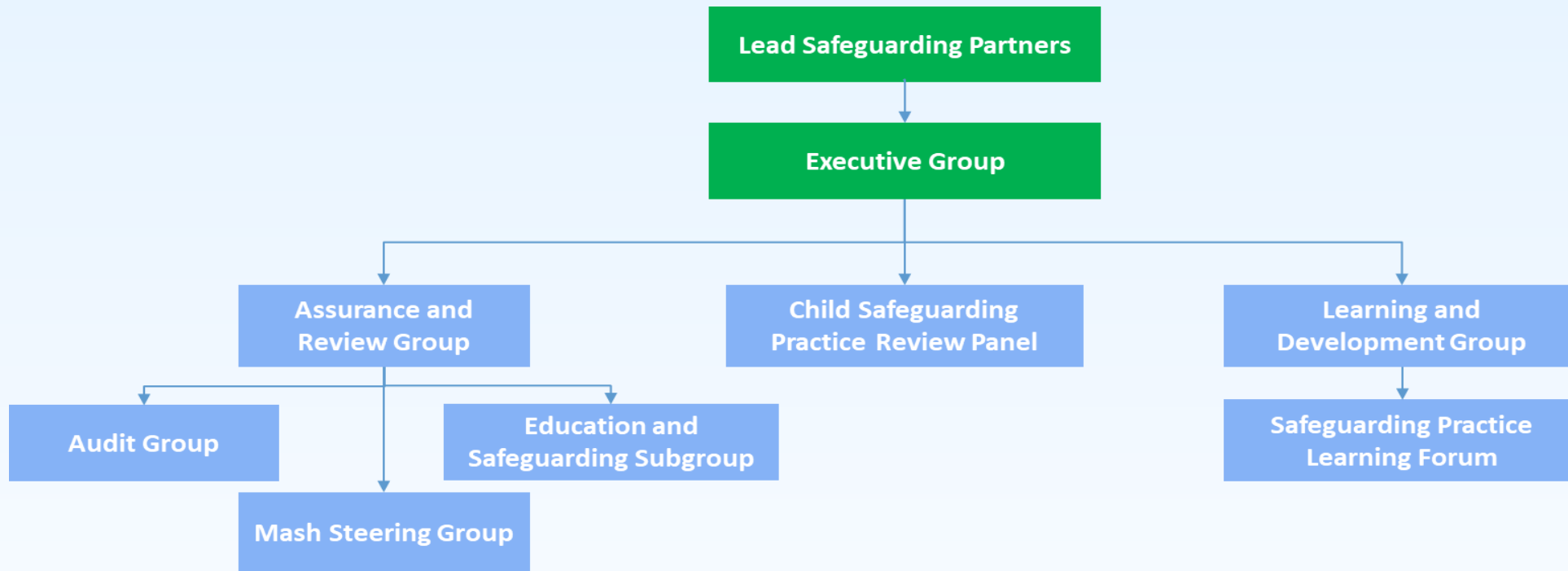
The statutory membership is the Local Authority, Integrated Care Board and the Police.

Safeguarding Adult Boards are required to:

- Arrange Safeguarding Adult Reviews;
- Publish for each financial year a Strategic Plan; and
- Publish an Annual Report.

The work of the Adults Safeguarding Board is governed by the following equal principles: Empowerment, Prevention, Proportionality, Protection, Partnership and Accountability. Priorities are reviewed annually.

Solihull Safeguarding Children Partnership

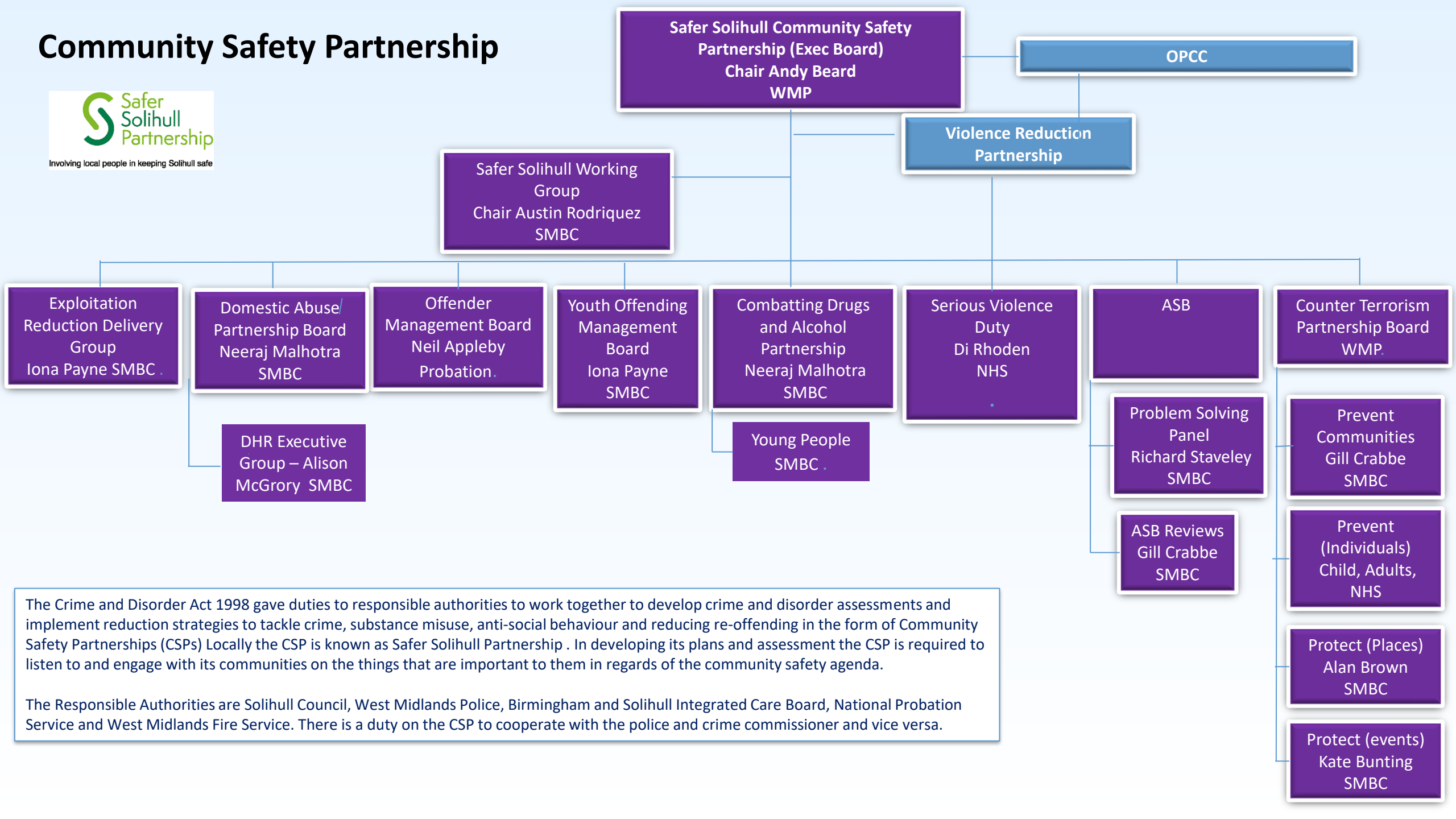


As a result of significant changes brought about by the Children and Social Work Act 2017, the Solihull Safeguarding Children Partnership (SSCP) was implemented in May 2019 in line with statutory guidance 'Working Together to Safeguard Children 2018'. The SSCP is the statutory mechanism for ensuring there are effective and efficient multi-agency arrangements to safeguard children and promote their welfare within the local area. The SSCP governance structure has been reviewed to reflect learning from the 2022 Joint Targeted Area Inspection and the recommendations made by the DfE Commissioner, Sir Alan Wood.

Priorities for the SSCP are reviewed annually and an annual report is produced in line with statutory requirements.

For more information contact the Business Manager, sscp@solihull.gov.uk or visit [Home - Solihull Safeguarding Children Partnership \(safeguardingsolihull.org.uk\)](https://safeguardingsolihull.org.uk)

Community Safety Partnership



The Crime and Disorder Act 1998 gave duties to responsible authorities to work together to develop crime and disorder assessments and implement reduction strategies to tackle crime, substance misuse, anti-social behaviour and reducing re-offending in the form of Community Safety Partnerships (CSPs) Locally the CSP is known as Safer Solihull Partnership . In developing its plans and assessment the CSP is required to listen to and engage with its communities on the things that are important to them in regards of the community safety agenda.

The Responsible Authorities are Solihull Council, West Midlands Police, Birmingham and Solihull Integrated Care Board, National Probation Service and West Midlands Fire Service. There is a duty on the CSP to cooperate with the police and crime commissioner and vice versa.