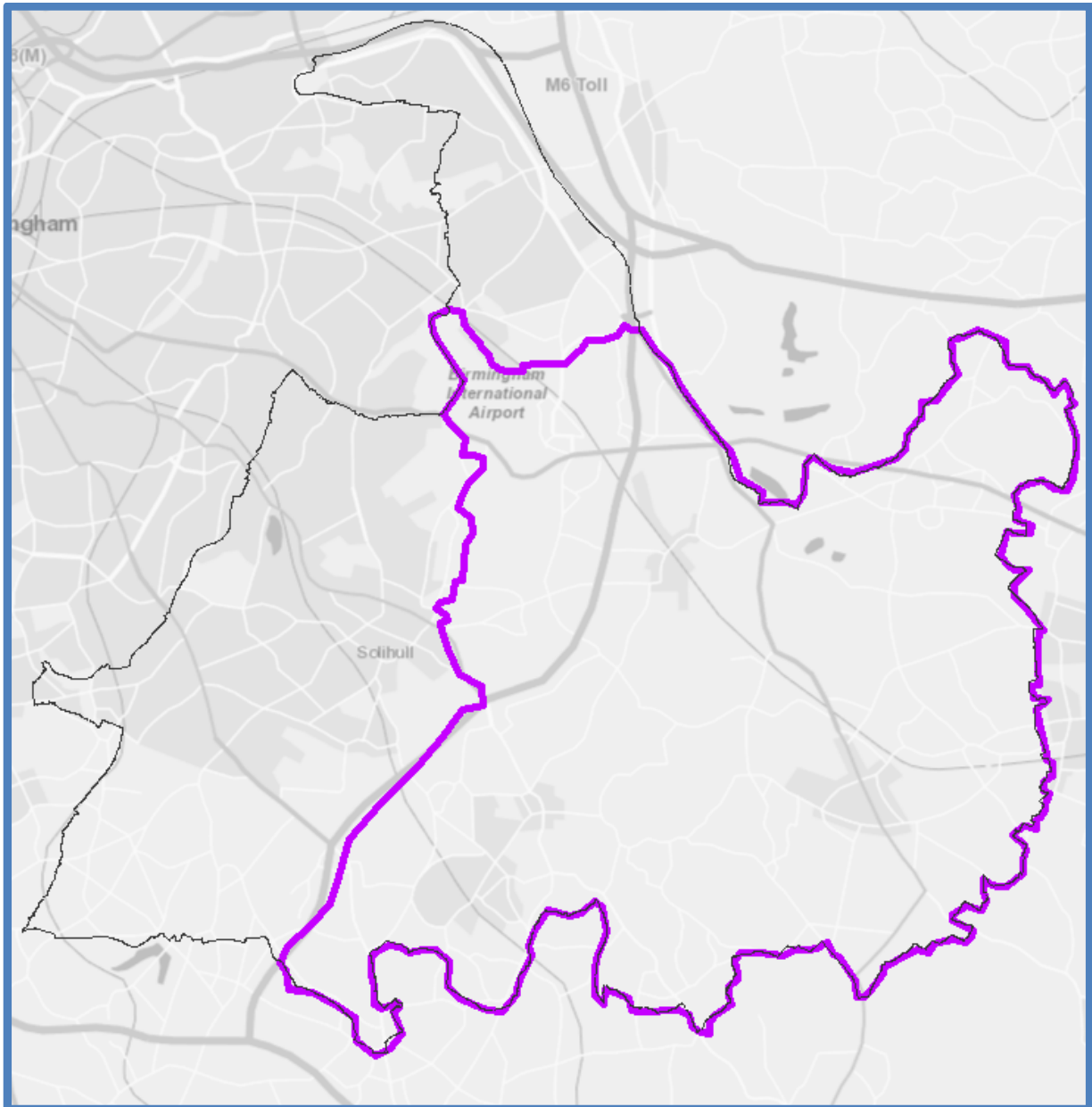


# 2018 Locality Profile: East Solihull



**CONTENTS***page  
number*

<b>LOCALITY PROFILE FORWARD</b>	1
<b>LOCALITY LSOA MAP</b>	2
<b>EAST SOLIHULL LOCALITY SUMMARY</b>	3
<b>PEOPLE AND PLACE</b>	5 -15
Population	5
Ethnicity, Origin and Language	7
Household Composition	9
Housing and Tenure	10
Deprivation	12
Infrastructure and Assets	12
Housing Development	13
<b>THE COMMUNITY VIEW</b>	15 – 22
Solihull Council Place Survey	15
Solihull Community Housing STAR Survey	19
<b>LOCAL AREA NEED</b>	22 – 55
Employment, Worklessness and Adult Skills	22
Incomes and Poverty	25
Housing Need	29
Adult Health and Wellbeing	30
Adult Social Care	37
Social Isolation	38
Children, Young People and Education	43
Crime and Community Safety	49
<b>APPENDIX: BOROUGH MAPS</b>	56

## LOCALITY PROFILE FORWARD

Solihull has been divided into three localities; north, east and west (see appendix).

This profile gives a snapshot of the East Solihull locality, focusing on the people, place and service need in the area. In addition it includes a summary of local residents' opinion giving an insight of what local people think of their community and East Solihull as a place to live.

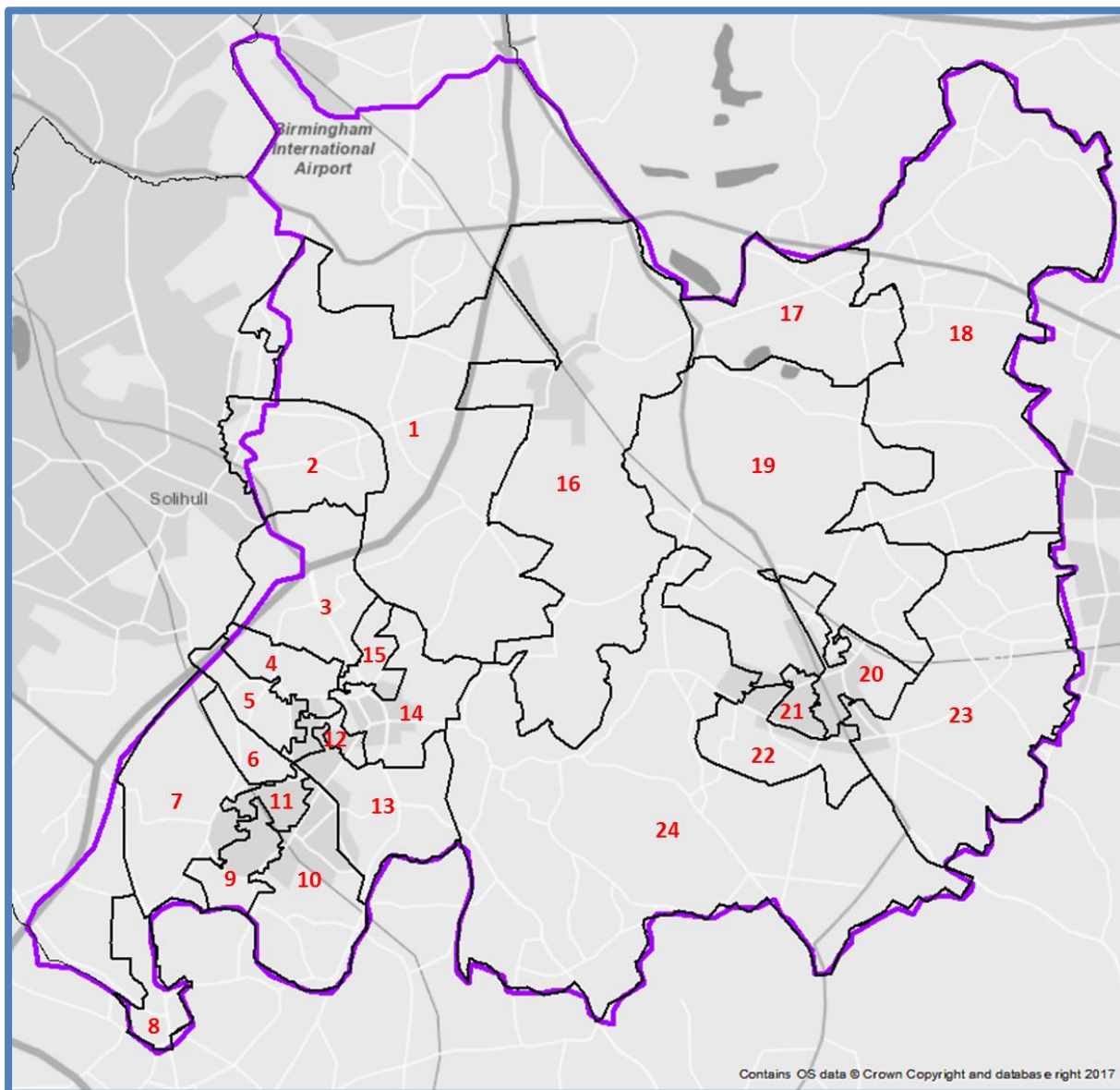
The data in the Locality Profiles is based on local area ward and Census area geography, with the majority of information available at Lower Super Output Area (LSOA) neighbourhood level.

The East Solihull locality includes 24 LSOAs (including Bickenhill Hub which overlaps the locality boundary) and four wards (including Bickenhill which also falls within the North Locality).

The 24 LSOAs are listed below, with a map overpage.

Map	LSOA	Map	LSOA
1	Coppice	13	Dorridge East
2	Hampton Lane	14	Knowle South
3	Copt Heath	15	Knowle North
4	Tilehouse Green	16	Hampton-in-Arden
5	Bentley Heath North	17	Meriden West
6	Bentley Heath South	18	Meriden East
7	Four Ashes	19	Berkswell
8	Hockley Heath	20	Balsall Common
9	Dorridge West	21	Yew Tree
10	Dorridge South	22	Balsall Street
11	Central Dorridge	23	Catchems Corner
12	Arden	24	Chadwick End

### EAST SOLIHULL SUPER OUTPUT AREAS



## EAST LOCALITY SUMMARY

Covering the rural areas of the borough, deprivation is relatively limited in the East Solihull locality and compared with other areas and the demand for many services is low. However, the comparatively isolated nature of many communities in the locality and distance from service hubs presents challenges of its own, particularly providing care and support for the East's relatively large older population.

### People and Place

- With 25% aged 65 years and over, East Solihull has the oldest population in the borough. In some LSOA neighbourhoods over 7% of residents are aged 85+.
- The older population is the fastest growing section of the population with the number aged 65+ increasing by 17% in the 5 years to 2016 and those 85+ by 25%.
- Over 94% of the population are White, with all other ethnic groups under-represented compared to England as a whole.
- Single person households are less common than elsewhere in the borough, although they are increasing more than other household types.
- There is a far greater proportion of owner occupied households than across England as a whole, although in a local context socially rented households are an important feature of some neighbourhoods in Knowle and Meriden.
- East Solihull is subject to very low levels of overall deprivation, although the relatively isolated nature of some neighbourhoods means that LSOAs in the area are amongst the most deprived in relation to the IMD's Barriers to Access to Housing and Services domain.
- There are nine housing development sites designated in the draft Local Plan in East Solihull which have an estimated capacity for just over 2,500 new housing units. This represents 29% of the borough total.

### Community View

- A large majority of East Solihull respondents to the Place Survey are satisfied with the area as a place to live (92%) with responses also showing that it is a socially cohesive area.
- Traffic congestion, road & pavement repairs and the level of crime are most frequently cited as aspects of the local area that need improving.
- 43% of respondents from East Solihull say that they can influence decisions in their local area, compared to 51% who don't think they can. Although this is a broadly unfavourable response it is more positive than other of Solihull.
- Participation in formal volunteering is by far the highest in the borough (58%), as is the proportion of people taking part in informal volunteering (75%).
- A large majority of East Solihull tenants and residents responding to Solihull Community Housing's STAR survey are satisfied with their local neighbourhood (87%).
- This is higher than the borough average, as is the proportion satisfied with the quality of their home (83%) and the proportion who think their rent provides value for money (84%).

### Local Area Need

- East Solihull residents are far less likely than elsewhere in the borough to be dependent on an out of work benefit, housing benefit or tax credits.
- In East Solihull just 4% of children live in an out of work benefit household, although this does rise to double digit levels in some neighbourhoods.
- The number of households in fuel poverty is below average, although the differential between East Solihull and the England average is less than for many other poverty measures.
- Evidence suggests adults in East Solihull are more likely to live a healthy lifestyle than elsewhere in the borough and data relating to life expectancy and premature mortality is accordingly more favourable.
- Proportionally fewer adults in East Solihull aged 18+ receive council funded Adult Social Care support than elsewhere in the borough.
- 77% of East Solihull residents receiving Adult Social Care support receive a community package such as homecare, with 18% in a care home.
- Many of the risk factors associated with social isolation such as benefit dependency are less prevalent in East Solihull and most respondents to the Place Survey think that their neighbours would provide practical help if they fell ill.
- In East Solihull there are relatively high concentrations of particular groups at risk of social isolation, such as carers and older people living alone. For instance, in many LSOA neighbourhoods more than 15% of all households are occupied by a single older person.
- Geographical isolation, as measured by the IMD is a social isolation risk specific to many East Solihull neighbourhoods.
- Health measures for children in East Solihull, such as obesity levels are much more favourable than the England average.
- Demand for Childrens Services is much lower in East Solihull than elsewhere in the borough.
- Special Educational Needs are less common among children & young people living in East Solihull – 11% compared to the borough average of 15%.
- East Solihull has the lowest crime and ASB rate in the borough, although both increased in the year to September 2017.
- 66% of East Solihull respondents to the Solihull Place Survey say that they feel safe in the local area after dark compared to 18% who feel unsafe (6% very unsafe). The proportion of those who feel unsafe is much lower than the Solihull average (32%).
- The proportion of East Solihull respondents who think that ASB is a problem in their local area is much lower than elsewhere in the borough. Rubbish & litter lying around is the most frequently cited ASB issue in the area.

## PEOPLE AND PLACE

### Population

	East	Solihull	England
2016 residents	19,836	211,763	55,268,067
Area (hectares)	10,239	17,829	13,027,843
Population density	3.9	11.9	4.2
2011 Households	15,816	86,056	22,063,368
Average household size	2.43	2.40	2.40
<i>Source: ONS</i>			

In 2016 the population of East Solihull was 39,836 (19,502 males, 20,334 females).

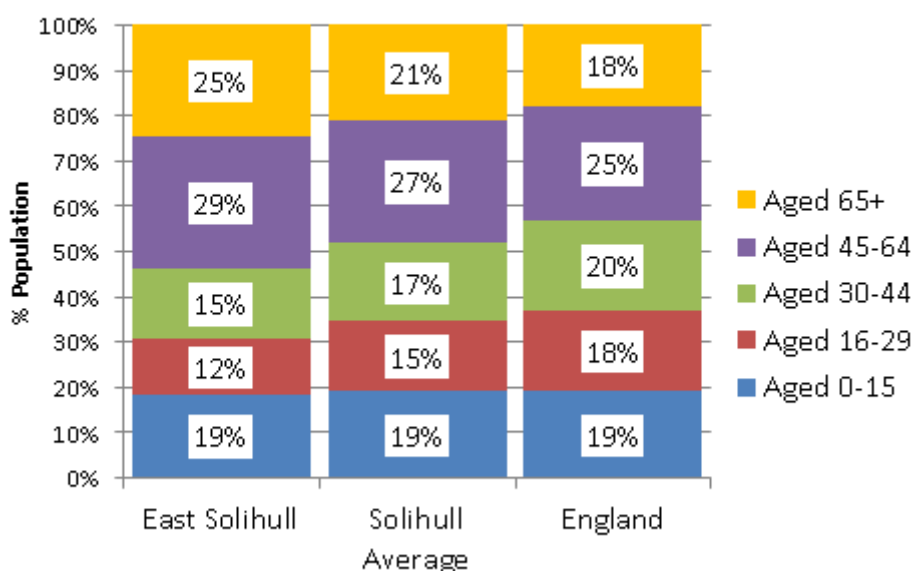
There are just under 4 people per hectare in East Solihull, compared to the Solihull average of 11.6 per hectare and the England average of 4.2 per hectare.

At the time of the 2011 Census there were 15,816 households in East Solihull, with an average of 2.43 people per household, compared to the Solihull and England averages of 2.40 per household.

	Count	% of Population		
	East	East	Solihull	England
Aged 0-4 years	2,028	5.1%	5.9%	6.2%
Aged 5-15 years	5,345	13.4%	13.3%	12.8%
Aged 16-29 years	4,868	12.2%	15.4%	18.0%
Aged 30-44 years	6,134	15.4%	17.3%	19.6%
Aged 45-64 years	11,674	29.3%	27.1%	25.4%
Aged 65-84 years	8,320	20.9%	17.9%	15.5%
Aged 85 years+	1,467	3.7%	3.1%	2.4%
Children (aged 0-15 years)	7,373	18.5%	19.2%	19.1%
Working Age (16-64 years)	22,676	56.9%	59.8%	63.1%
Retirement Age (65 years+)	9,787	24.6%	21.0%	17.9%
<i>Source: ONS Mid Year Population Estimates 2016</i>				

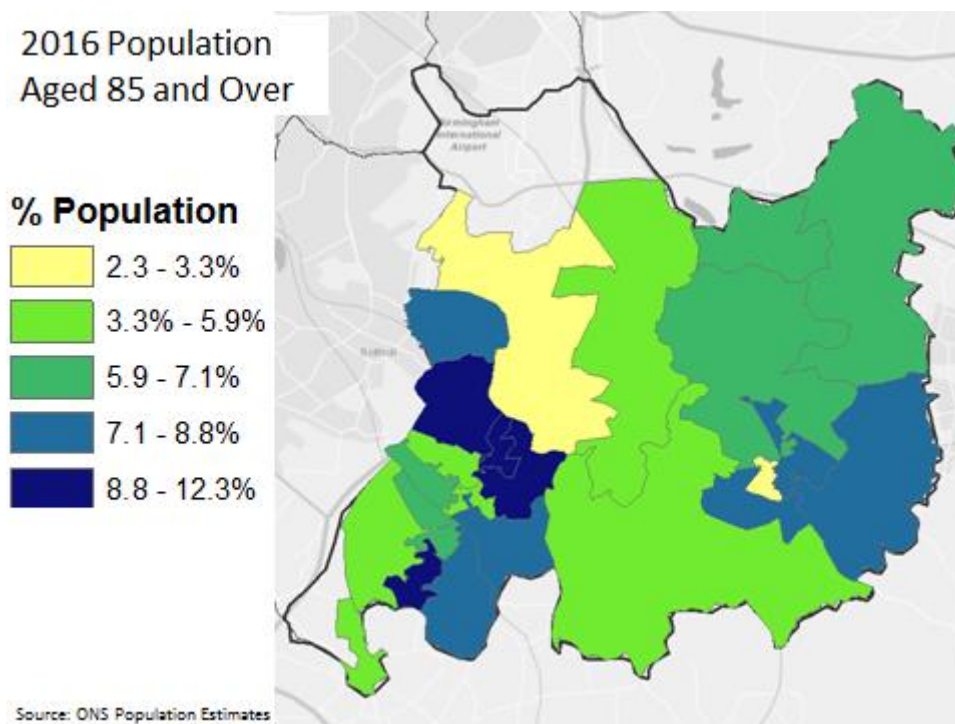


## Resident Population 2016



Source: ONS Mid Year Population Estimates

The East Solihull locality has an older age profile than the rest of Solihull and England as a whole. Nearly 25% of the population are aged 65 and over (21% for Solihull, 18% for England), including nearly 1,500 aged 85+ (3.7%). As the map shows the proportion of older people aged 85 and over rises to over 7% in many LSOA neighbourhoods around Knowle and is as high as 12% in Copt Heath.

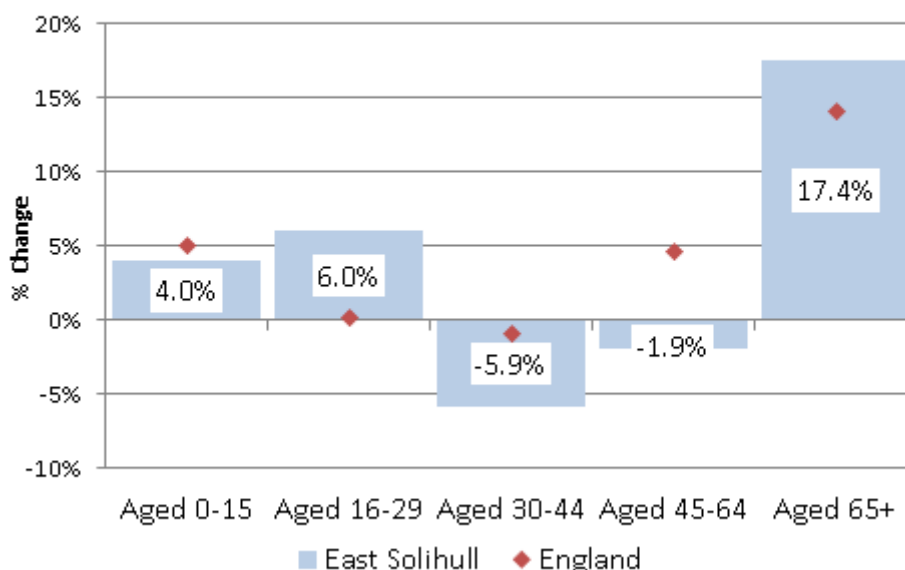


East Solihull's population increased by 3.6% (1,401 individuals) between 2011 and 2016, compared to the borough average of 2.5% and the England average of 4.3%.



By age group the largest increase in population in East Solihull between 2011 and 2016 was among those aged 65 and over (17.4%, 1,453 individuals). This includes a 25% increase in the 85+ population (+290 individuals). There were smaller increases in the number of children aged 0-15 years (4.0%, 284 individuals) and young people aged 16-29 (6%, 277 individuals). This was partially offset by a fall in the number of older working age people in the East Solihull locality.

### Population Change 2011-2016



Source: ONS Mid Year Population Estimates

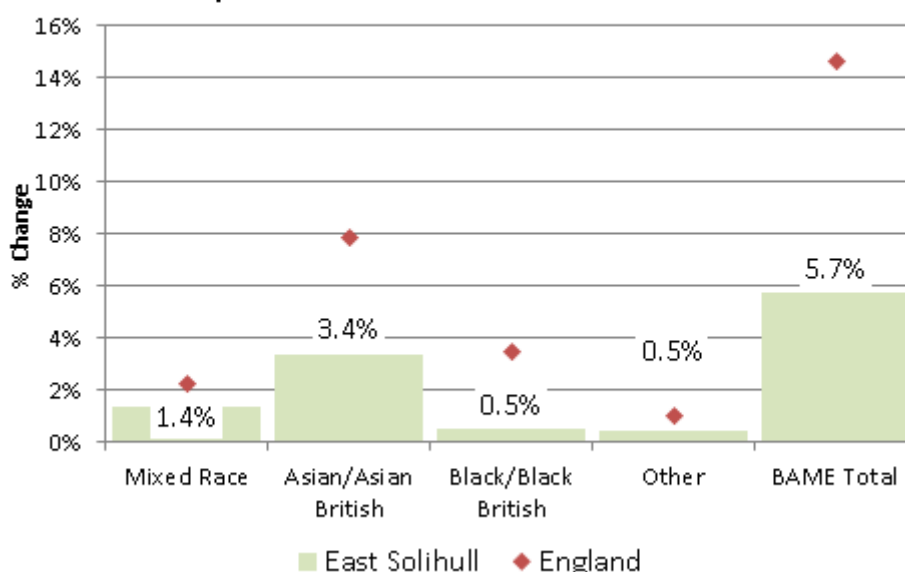
### Ethnicity, Origin, Religion and Language

	Count	% of Population		
	East	East	Solihull	England
White Population	36,243	94.3%	89.1%	85.4%
Black & Asian Minority Ethnic Population (BAME)	2,192	5.7%	10.9%	14.6%
Born in UK	36,321	94.5%	92.6%	86.2%
Born Outside UK	2,114	5.5%	7.4%	13.8%
No Religion	7,197	20.1%	22.8%	26.7%
Christian	27,250	76.0%	70.0%	64.0%
Other Religions	1,398	3.9%	7.1%	9.4%
English Main Language (age 3+)	36,870	98.4%	97.1%	92.0%
Speak English Well (age 3+)	528	1.4%	2.5%	6.3%
Cannot Speak English or Speak Well (age 3+)	66	0.2%	0.5%	1.7%

Source: ONS Census 2011

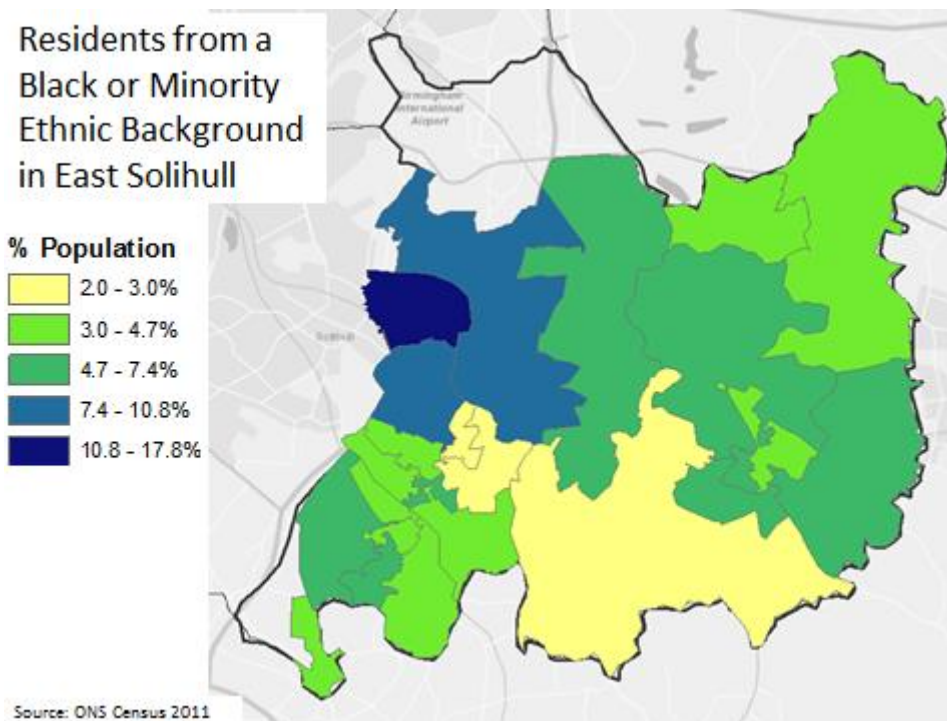
East Solihull has a smaller Black and Minority Asian (BAME) population than either the borough or national average (5.7% compared to 10.9% and 14.6% respectively).

### Black and Asian Minority Ethnic (BAME) Population in East Solihull 2011



Source: ONS Mid Year Population Estimates

The Hampton Road and Coppice LSOA neighbourhoods have relatively large BAME populations (18% and 11% respectively). Elsewhere in East Solihull the BAME population is below the Solihull average.



In common with Solihull as a whole the number of East Solihull residents born outside of the UK is relatively small (5.5% of the total compared to the England average of 13.8%). A large majority (75%) of the 2,114 East Solihull residents born outside of the UK arrived prior to 2001, with just 11% arriving post 2007.

Around 20% of the East Solihull population say that they have no religious affiliation. Christians are the largest group (76%), with the proportion of other religions comparatively small (4% compared to 7% for the Solihull average and over 9% for England as a whole).

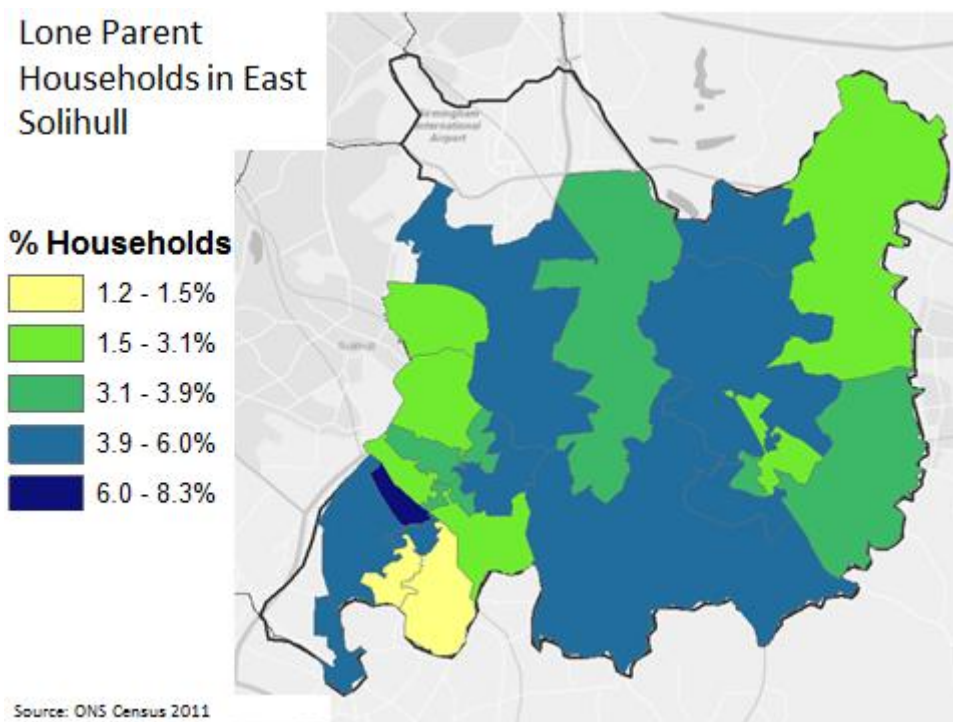
Over 98% of the East Solihull population aged 3 years and over have English as their main language, with those that cannot speak English or speak English well representing just 0.2% of the total population.

### Household Composition

	Count	% of All Households		
	East	East	Solihull	England
One Person	4,083	25.8%	29.2%	30.2%
One Family	11,062	69.9%	65.6%	61.8%
Other Households	671	4.2%	5.2%	8.0%
Total Aged 65+	4,406	27.9%	24.4%	20.7%
Of which Single	2,272	14.4%	13.9%	12.4%
All with Dependent Children	4,641	29.3%	30.2%	29.1%
Of Which Lone Parent	623	3.9%	7.1%	7.1%
All Households	<b>15,816</b>			
<i>Source: ONS Census 2011</i>				

70% of East Solihull's 15,816 households are occupied by one family, which like the borough as a whole is above the England average (62%). Single person households are less common in East Solihull than across Solihull as a whole, but increased by 15% between 2001 and 2011, whereas those occupied by a family increased by just 3%.

There are 1,018 lone parent households in East Solihull of which 623 have dependent children, which represents 4% of all households in the locality, much lower than either the Solihull or England averages (both 7%). As the map below shows the proportion of lone parent households is above the England average in only one East Solihull LSOA neighbourhood (Bentley Heath South, 8%).



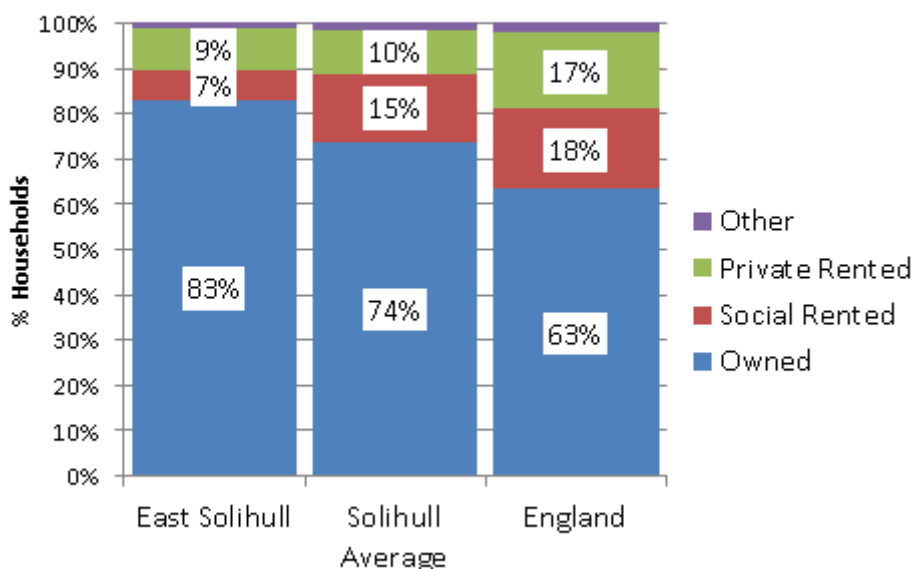
### Housing and Tenure

Over 83% of households in the East Solihull locality are owner occupied, far in excess of the England average of 63%. East Solihull accounts for just 8% of all socially rented households in Solihull.

	Count	% of Households		
	East	East	Solihull	England
Owner Occupied	13,139	83.1%	73.9%	63.3%
Shared Ownership	46	0.3%	0.6%	0.8%
Socially Rented	1,057	6.7%	14.9%	17.7%
Privately Rented	1,435	9.1%	9.9%	16.8%
Living Rent Free	139	0.9%	0.7%	1.3%

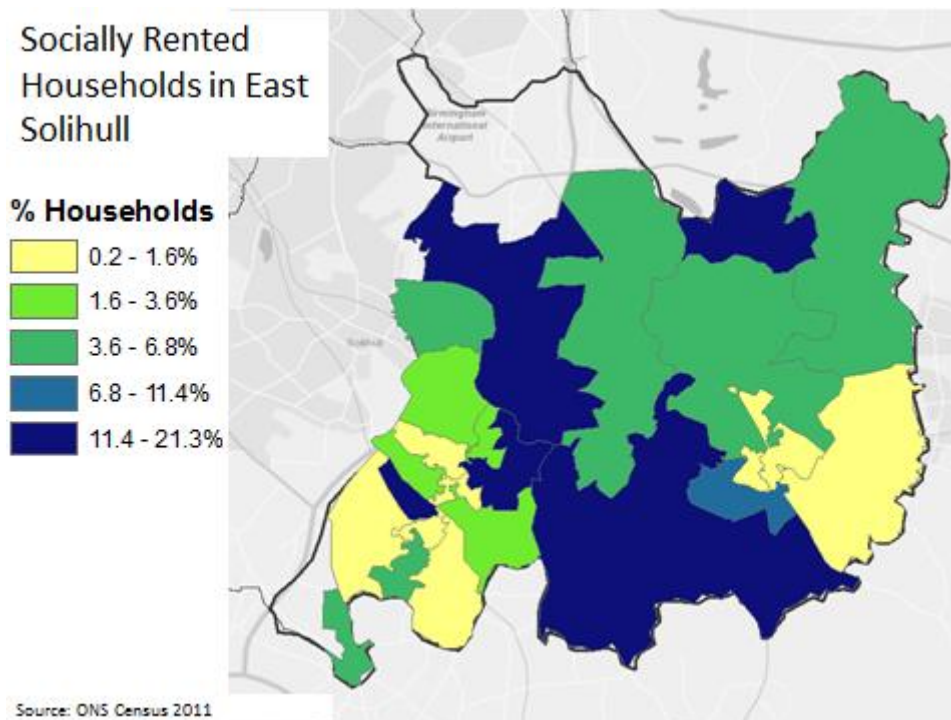
Source: ONS Census 2011

## Household Tenure 2011



Source: ONS Census

The proportion of socially rented households in East Solihull is low, although in a local context there are pockets of relatively high concentrations in Meriden West (21% of households), Knowle South (20%), Coppice (18%), Chadwick End (17%) and Bentley Heath South (16%).



Source: ONS Census 2011

The majority of households in the East Solihull locality live in a house or bungalow. The proportion living in flats is nearly half of the national average (12% compared to 22%).

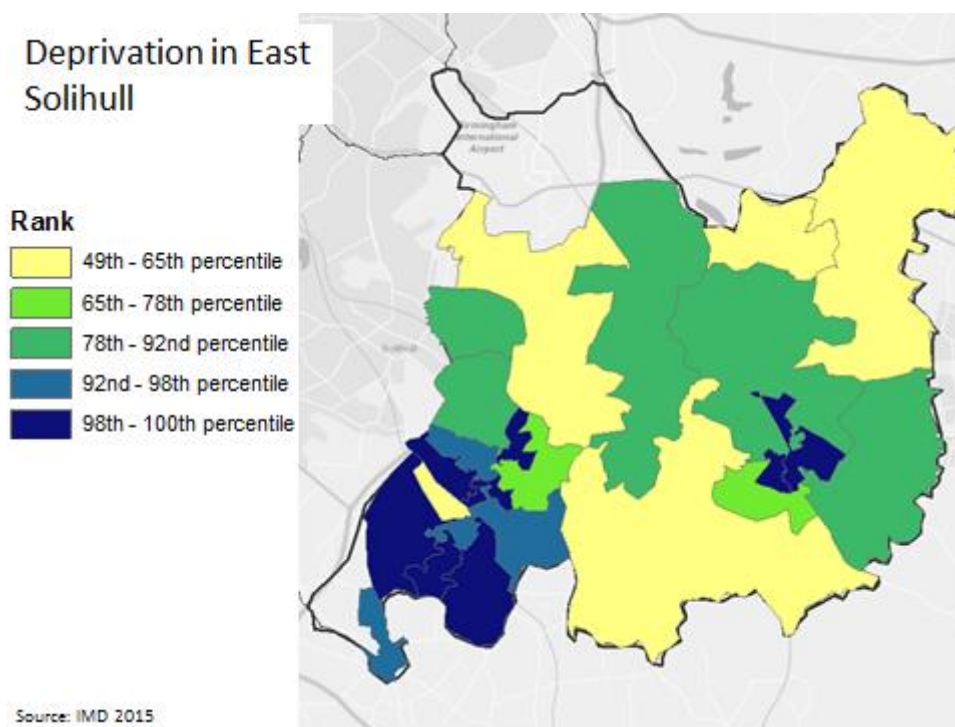
	Count	% of Households		
	East	East	Solihull	England
Whole House or Bungalow	14,238	87.7%	81.6%	77.5%
Flat, Maisonette or Apartment	1,890	11.6%	18.2%	22.1%
Other	112	0.7%	0.2%	0.4%

*Source: ONS Census 2011*

### Deprivation

The Index of Multiple Deprivation (IMD) combines a number of income, social and housing measures into a single deprivation score for individual LSOA neighbourhood in England. In this way the IMD ranks deprivation in each neighbourhood relative to all others in England.

East Solihull is subject to very low levels of deprivation. The average percentile rank of the 24 LSOAs in the East Solihull locality is 86.3 compared to 74 in the West locality and 25.2 in the North of Solihull. The most deprived LSOA in the locality is Meriden West on the 49<sup>th</sup> percentile nationally and 19 LSOAs are in the least deprived 25% of neighbourhoods in the country including 14 in the least deprived 10%.



Of the seven domains that contribute to the overall deprivation score, LSOAs in East Solihull only feature in the bottom 20% in England in the Barriers to access to Services (4 out of 24 in the bottom 20% nationally) and Living Environment (1 out of 24 in bottom 20%).

### Infrastructure and Community Assets

Located in the East Solihull locality are a number of the key strategic assets of the West Midlands including Birmingham Airport, The NEC and Birmingham Business Park. The development of the HS2 interchange will cut journey times to London to just 40 minutes.



The area's economic success has put pressure on the road network, particularly the M42 motorway junctions. Despite its excellent connectivity to the strategic transport network, the area suffers from poor bus access and infrequent services to adjacent areas.

At 1.68 per household, East Solihull has the highest levels of car ownership in the borough with just 9% of households having no car or van compared to the England average of 26%. 82% of East Solihull residents who travel to work do so by private vehicle, with just 11% using public transport.

The majority of East Solihull is Green Belt and has a high quality built and natural environment, characterised by its Arden landscape setting, attractive countryside, important green corridors such as its canals and rivers and its rich biodiversity.

The table below summarises the range of community facilities and assets located in the East Solihull locality. A full list is available in the separate asset register.

	Type of Asset	Number
Education	Infant/Primary	12
	Secondary	2
	Special	0
	Private	0
	Further Education College	0
Health & Care	GP Surgery	7
	Pharmacy	7
	Older People Residential & Nursing	8
	Older People Sheltered Housing/Extra Care	18
	Residential for Adults with Learning Disabilities	2
Community Facilities	Libraries	4
	Community Centres, Halls & Clubs	41
	Sports & Leisure Facilities	2
	Places of Worship	19
Parks & Nature Reserves	Green Flag Parks	3
	Other Parks	2
	Local Nature Reserve	1

## Housing Development

The Solihull Local Plan (SLP) was adopted in December 2013 and covers the period 2011 to 2028. However, in the wake of a legal challenge, housing shortfalls in the wider region and the need to deliver HS2 it was deemed necessary for an early review of this plan.



This review has led to the development of a draft local plan with additional land allocated for housing development<sup>1</sup>.

There are two housing sites in East Solihull allocated in the 2013 SLP that have not yet started development and have been retained in the updated draft local plan. These sites in Balsall Common and Hampton-in-Arden have the potential to deliver 175 new housing units.

<b>Existing Housing Allocations (Retained from 2013 SLP)</b>		
<b>Site</b>	<b>Area (hectares)</b>	<b>Capacity (Units)</b>
Riddings Hill, Balsall Common	1.61	65
Meriden Road, Hampton-in-Arden	2.79	110
East Solihull Total	4.4	175
<i>Source: SMBC Draft Local Plan</i>		

There are seven new sites allocated in East Solihull in the updated draft local plan with a potential to deliver 2,350 new housing units on a phased basis. The largest of these are on land adjacent to Balsall common and south of Knowle.

<b>New Housing Allocations (Proposed as part of Review)</b>					
<b>Site</b>	<b>Area (ha)</b>	<b>Capacity (Units)</b>	<b>Delivery Years</b>		
			<b>Short 1-5</b>	<b>Medium 6-10</b>	<b>Long 11-15</b>
Barratts' Farm – Balsall Common	57	800	Yes	Yes	Yes
Frog Lane – Balsall Common	6	150	Yes		
Windmill Lane / Kenilworth Rd – Balsall Common	11	200	Yes		
Hampton Road – Knowle	13	300	Yes	Yes	
South of Knowle (between Station Rd, Warwick Rd & Grove Rd)	46	750	Yes	Yes	Yes
West of Meriden (between Birmingham Rd & Maxstoke Lane)	3	50	Yes		
Meriden Road – Hampton-in-Arden	7	100		Yes	
East Solihull Total	143	2,350			
<i>Source: SMBC Draft Local Plan</i>					

Taken together the retained housing development sites from the 2013 SLP and the new allocations make provision for 2,525 housing units in East Solihull. This is 29% of the borough's total and equates to 63.4 units for each 1,000 residents, proportionally the largest of the three locality areas.

<sup>1</sup> The Review process is ongoing with public consultation on the proposals running from December 2016 to February 2017. The final housing allocations are dependent on this consultation process.

<b>Housing Allocations in Draft Local Plan</b>					
	Existing Allocations	New Allocations	Total Units	% Solihull Total	Units Per 1,000 Population
North	280	350	630	7%	10.7
East	175	2,350	2,525	29%	63.4
West	2,185	3,450	5,635	64%	49.9
Solihull	2,640	6,150	8,790		41.5
<i>Source: SMBC Draft Local Plan</i>					

## COMMUNITY VIEWS

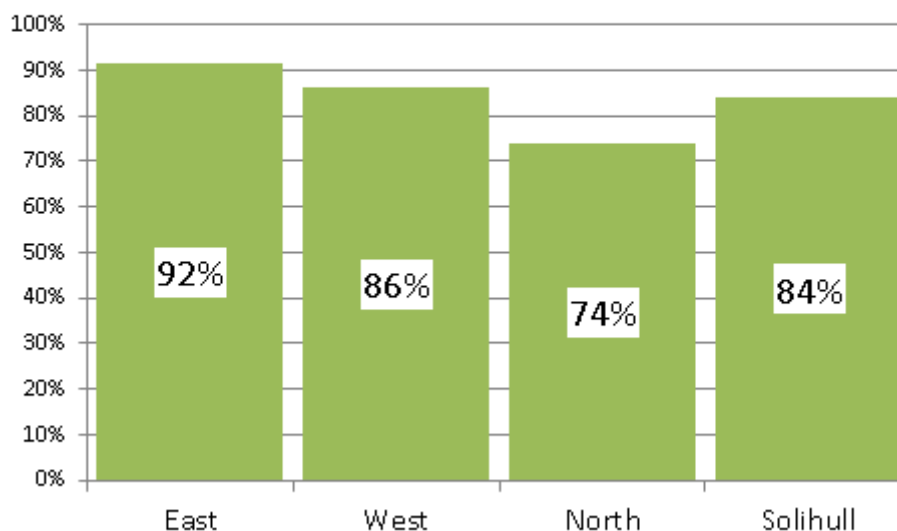
### Place Survey

In 2018 the Solihull Place Survey asked 700 Solihull residents a series of questions relating to their opinions about their local area as a place to live, local services and their own participation in community life. There were 134 responses from residents living in the East Solihull locality area.

92% of respondents in East Solihull said that they were satisfied with their local area as a place to live (62% very satisfied, 30% fairly satisfied) compared to less than 4% who were dissatisfied. This is the most favourable response of the three Solihull localities.

	<b>Overall, how satisfied or dissatisfied are you with your local area as a place to live?</b>		
	East Total	% Respondents	
		East	Solihull Average
Very satisfied	83	62%	39%
Fairly satisfied	40	30%	44%
Neither satisfied nor dissatisfied	6	5%	5%
Fairly dissatisfied	5	4%	8%
Very dissatisfied	0	0%	2%
Total	134		
<i>Source: SMBC Place Survey 2018</i>			

## Respondents Satisfied with their Local Area as a Place to Live



Source: SMBC Place Survey 2018

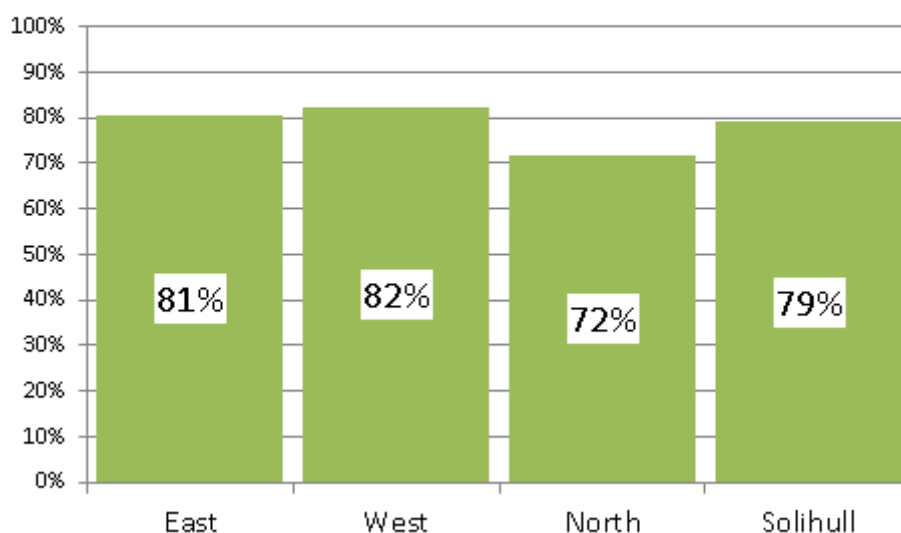
Respondents to the Place Survey were asked which of 12 elements of their local area and community most needed improving. As the table below shows 27% of respondents in East Solihull said that traffic congestion definitely needed improving. More than one in five respondents also cited road & pavement repairs and the level of crime. Compared to elsewhere in Solihull people in the East locality are more concerned about fast broadband connectivity.

Definitely Needs Improving in Local Area				
Aspect of Local Area	% Respondents		Rank out of 12	
	East Solihull	Solihull Average	East Solihull	Solihull Average
The level of traffic congestion	27%	30%	1	2
Road and pavement repairs	24%	30%	2	1
The level of crime	20%	27%	3	3
Fast Broadband/Internet Connectivity	17%	11%	4	8
Things for older people to do - including those older people with a disability	16%	16%	5	5
Support for people who are caring for others	13%	14%	6	6
Things for young people to do - including those young people with disabilities	13%	21%	7	4
Reliable local Public Transport	12%	8%	8	9
Support in the community for people who require care to live independently	8%	13%	9	7
Good local facilities (Schools, Doctors, Dentists, Shops, Sports & Leisure facilities)	7%	7%	10	10
Local places to work	4%	7%	11	11
Attractive environment	1%	5%	12	12

Source: SMBC Place Survey 2018

Like Solihull as a whole a large majority of respondents from East Solihull say that people from a different background in their local area get on well together (81% compared to 79% for the Solihull average).

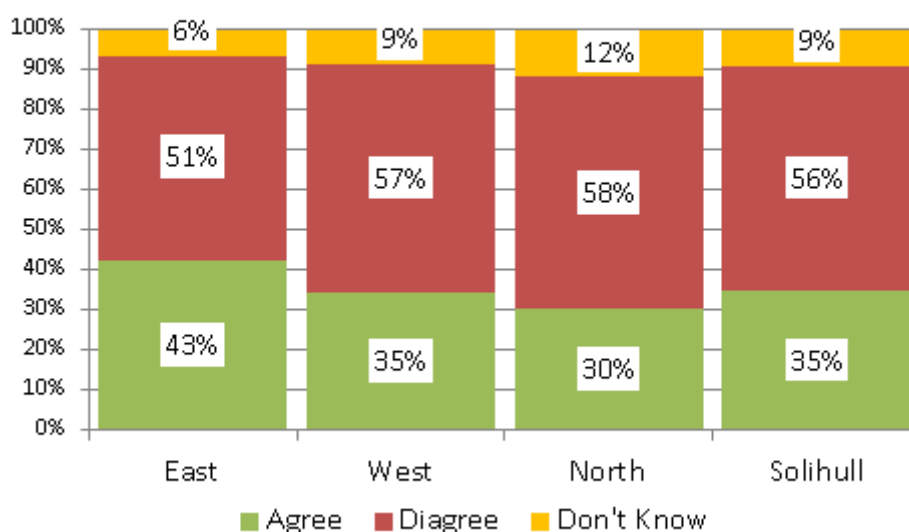
### Respondents Agree that People from a Different Background Get on Well Together in their Local Area



Source: SMBCPlace Survey 2018

43% of respondents from East Solihull say that they can influence decisions in their local area, compared to 51% who don't think they can. Although this is a broadly unfavourable response it is more positive than other of Solihull.

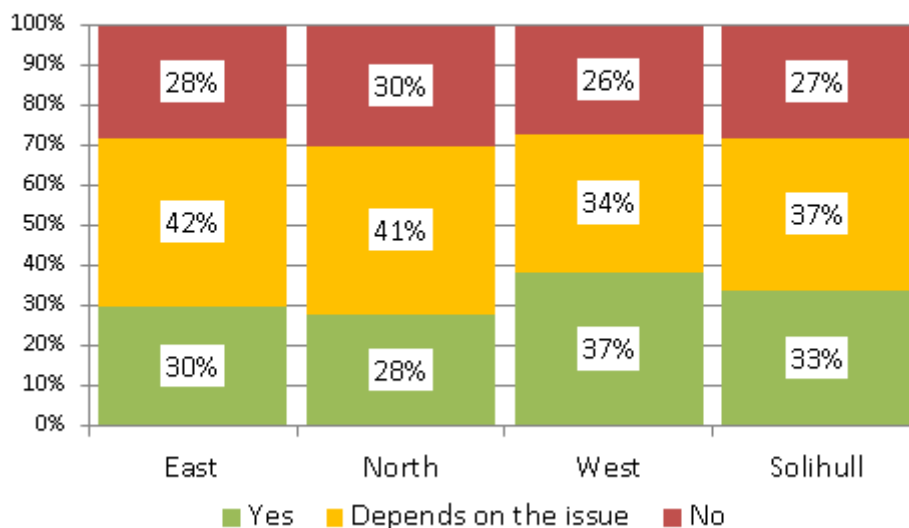
### Do you agree or disagree that you can influence decisions affecting your local area?



Source: SMBCPlace Survey 2018

30% of East Solihull respondents say that they would definitely like to be more involved in the decision making process, with a further 42% saying that it depends on the issue. This is broadly in-line with the Solihull average.

### Would you like to be more involved in decisions that affect your local area?

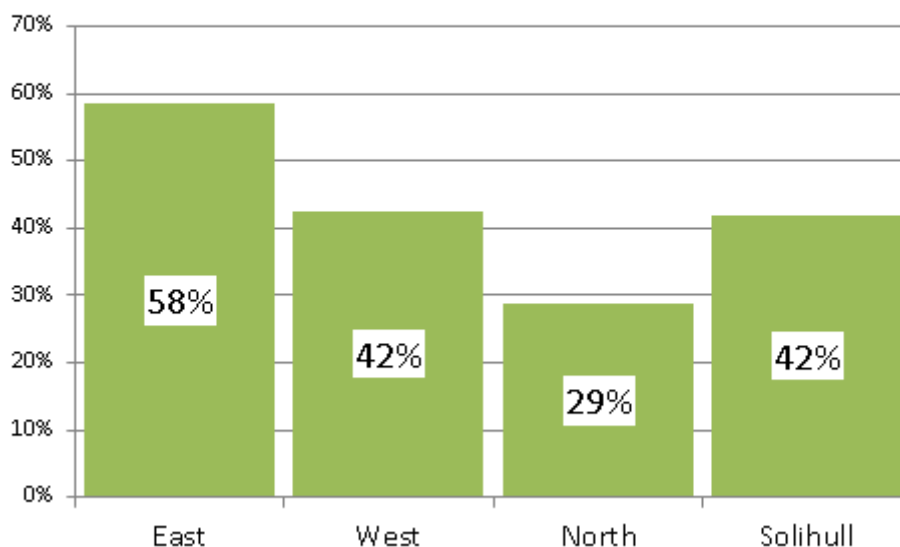


Source: SMBCPlace Survey 2018

58% of respondents from East Solihull say that have taken part in formal volunteering for a club or organisation over the last 12 months (41% once a month, 27% less often), compared to 41% who haven't volunteered. This is a higher participation rate than either of the other Solihull localities (42% West, 29% North).

It should also be noted that 75% of East Solihull respondents say that they have given informal unpaid help such as helping neighbours or litter picking in the last 12 months which is also the highest participation rate in the borough.

### Respondents Who Have Taken Part in Formal Volunteering Over the Last 12 Months



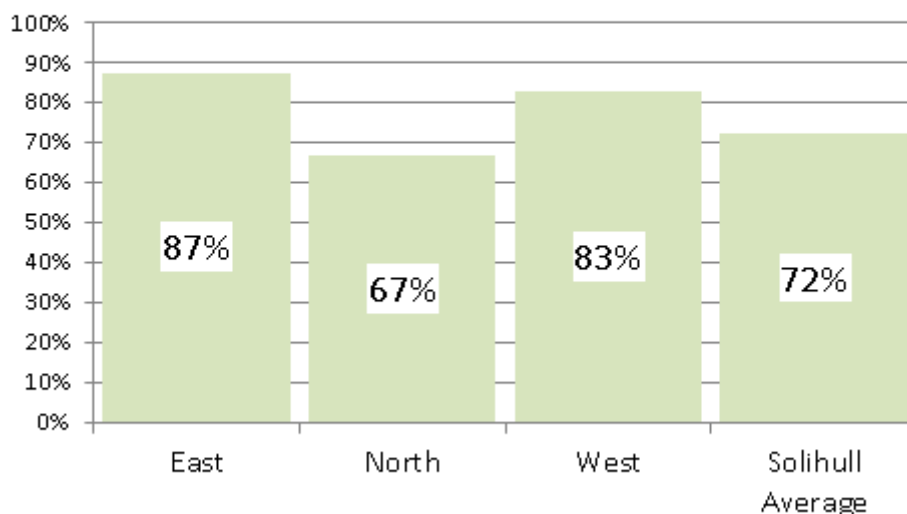
Source: SMBCPlace Survey 2018

### Solihull Community Housing Survey of Tenants and Residents (STAR)

Solihull Community Housing's STAR survey 2017 measures tenants' satisfaction with their local neighbourhood, their home and SCH services. Across Solihull as a whole there were a total of 1,299 responses equating to a response rate of 13%.

In East Solihull 87% of SCH tenants who responded to the STAR survey are satisfied with their local neighbourhood as a place to live, compared to just 10% who are dissatisfied. This represents the most favourable response in the borough.

## Respondents Satisfied with their Local Neighbourhood as a Place to Live



Source: SCH STAR Survey 2017

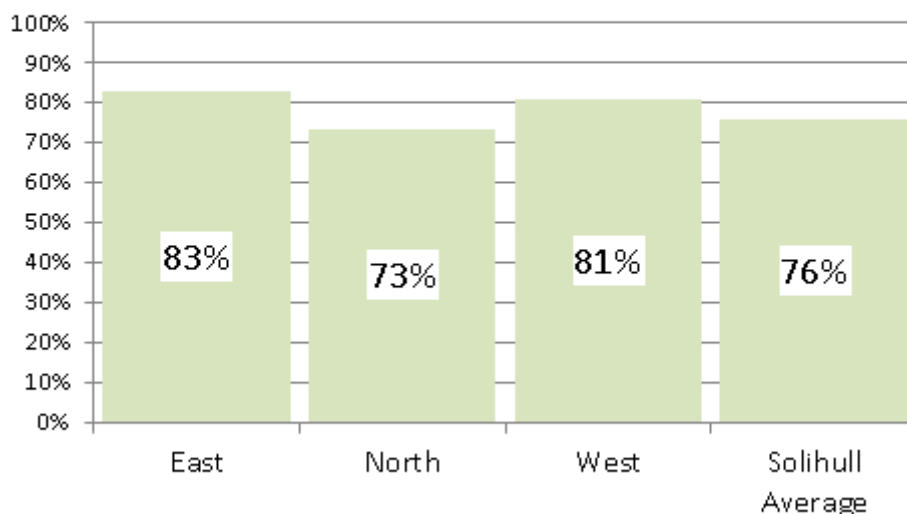
	Overall, how satisfied or dissatisfied are you with your local neighbourhood as a place to live?		
	East Total	% Respondents	
		East	Solihull Average
Very satisfied	80	60%	35%
Fairly satisfied	37	28%	37%
Neither satisfied nor dissatisfied	4	3%	8%
Fairly dissatisfied	7	5%	11%
Very dissatisfied	6	4%	8%
Total	134		

Source: SCH STAR Survey 2017

East Solihull tenants and residents are also more satisfied with the quality of quality of their home than the borough average and are more likely to say that they think that their rent provides value for money.

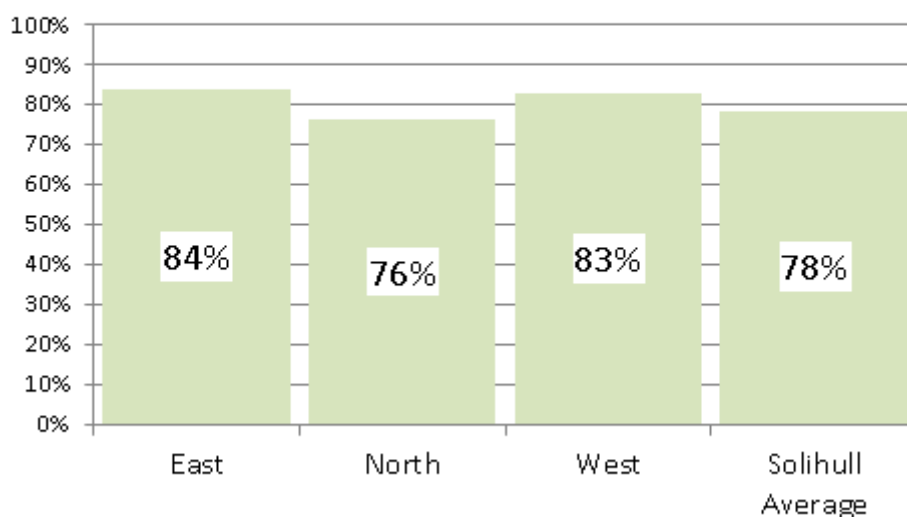


## Respondents Satisfied with the Quality of Their Home



Source: SCH STAR Survey 2017

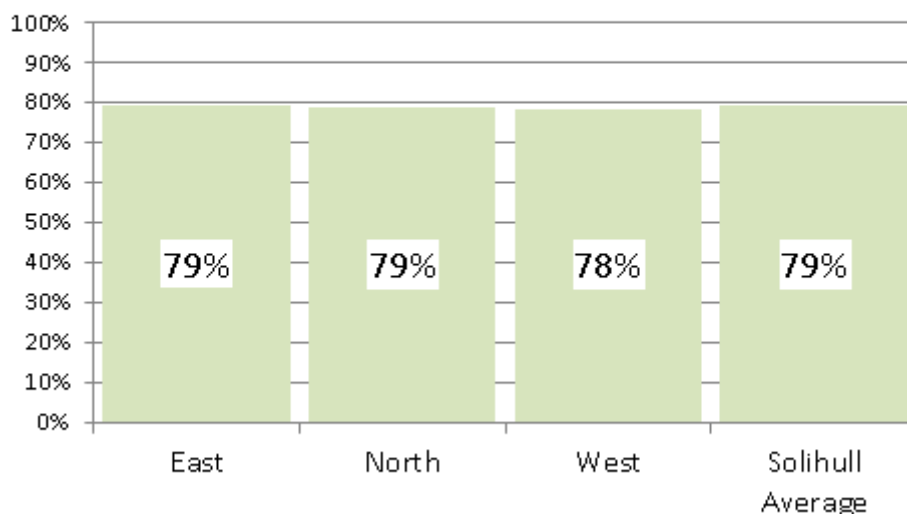
## Respondents Satisfied That Their Rent Provides Value for Money



Source: SCH STAR Survey 2017

A large majority of East Solihull respondents to the STAR survey say that they are satisfied with the overall service provided by SCH (79%), with 15% dissatisfied. Responses to this question in in East Solihull are in-line with other areas of the borough.

## Respondents Satisfied with the Service Provided by Solihull Community Housing



Source: SCH STAR Survey 2017

## LOCAL AREA NEED

### Employment, Worklessness and Adult Skills

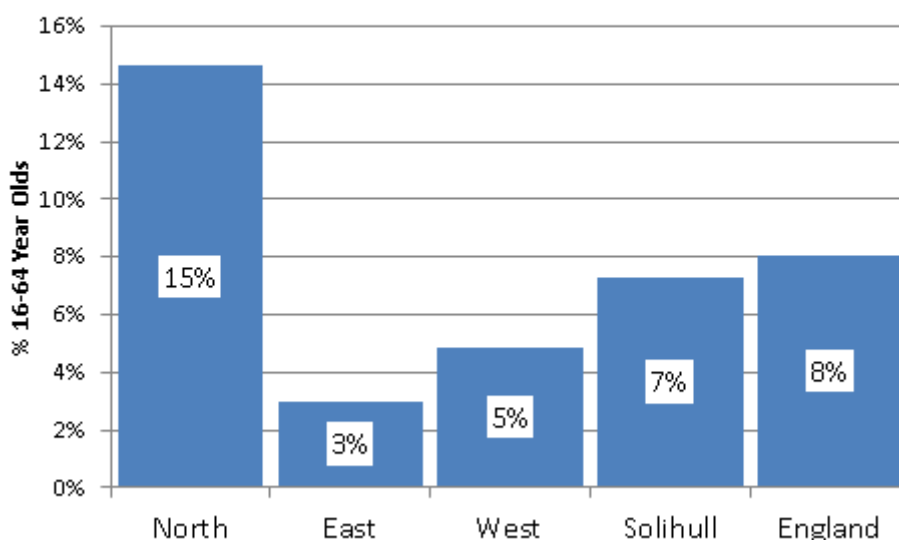
At the time of the Census the working age employment rate in East Solihull was higher than elsewhere in the borough and the England average. Proportionally fewer people were both unemployed and economically inactive.

	East Solihull	% 16-64 Population		
		East Solihull	Solihull Average	England
Employed	17,920	78%	74%	71%
Unemployed	687	3%	6%	6%
Economically Inactive	4,405	19%	21%	23%

Source: ONS Census 2011

In November 2016 680 individuals in East Solihull were claiming an out of work benefit, equating to a worklessness rate of just 3.0%. This is far lower than elsewhere in Solihull and less than half the proportion across England as a whole (8.1%).

## Out of Work Benefit Claimants



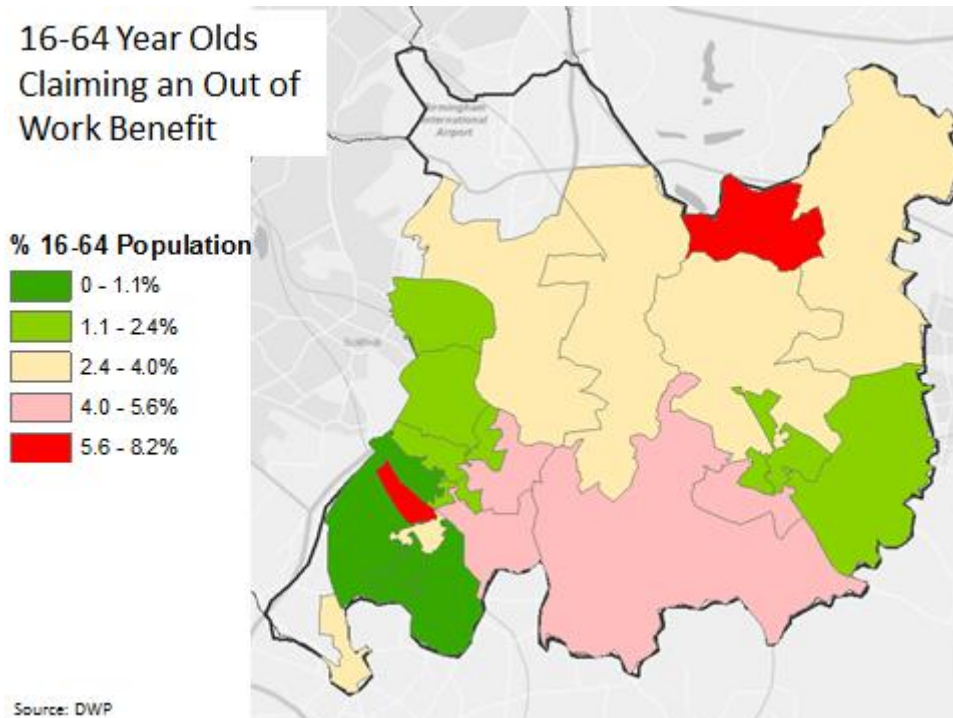
Source: DWP

77% of all out of work benefit claimants in East Solihull receive employment support Allowance (ESA) or Incapacity Benefits with 2.3% of the working age population claiming compared to the Solihull and England averages of 5% and 5.8% respectively. As with the rest of the borough and England as a whole around a half of all ESA claimants are unable to work because of mental health problems or a behavioural disorder.

	East Claimants	% 16-64 Year Olds		
		East	Solihull Average	England
ESA & incapacity benefits	525	2.3%	5.0%	5.8%
Job seekers allowance	75	0.3%	1.1%	1.1%
Lone parents on Income Support	75	0.3%	1.1%	1.0%
Others on income related benefits	5	0.0%	0.1%	0.2%
All Out of Work Benefits	680	3.0%	7.3%	8.1%

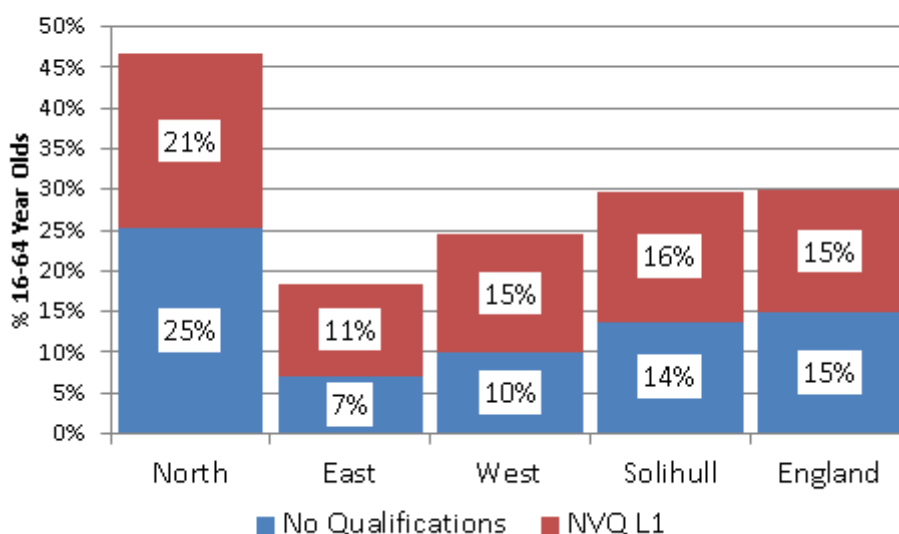
Source: DWP

The map of LSOA neighbourhoods below shows worklessness is low across all of East Solihull, with only Bentley Heath South (8.4%) above the England average.



Alongside health, qualification levels are one of the main barriers to employment. 7% of working age residents in East Solihull have no qualifications, with a further 11% qualified to just NVQ level 1. At the other end of the spectrum 47% have NVQ level 4+ qualifications (degree level and above) compared to the Solihull and England averages of 32% and 30% respectively. This represents a much higher skills base than elsewhere in Solihull and across England as a whole.

## Working Age Residents with Low Qualifications Levels



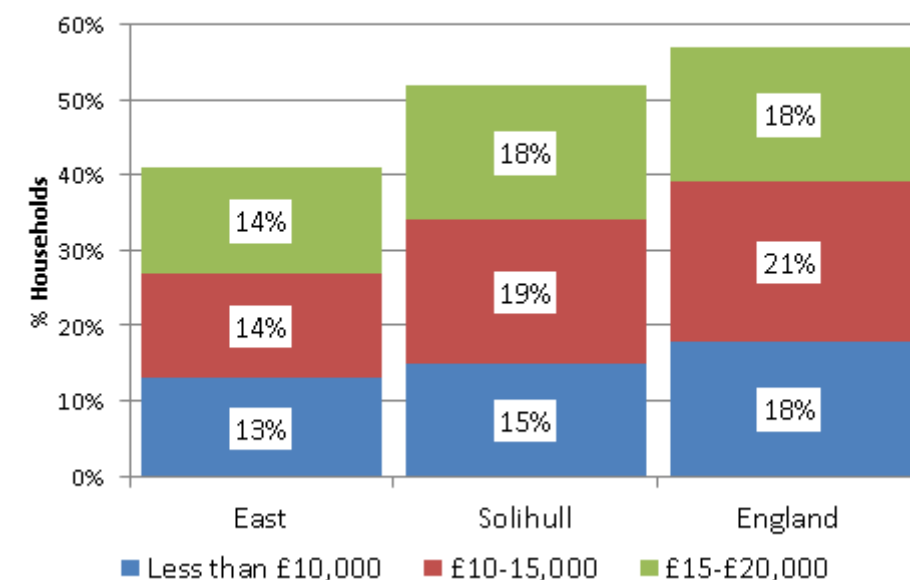
Source: ONS Census 2011

The relatively high skills base is reflected in below average levels of worklessness whilst also dictating the type of employment undertaken by many of those in work. This is shown by a comparison of the occupations of those in employment in East Solihull compared to the rest of the borough and national average. For instance, just 9% of East Solihull residents work in process or elementary occupations with 46% working in managerial or professional roles. Across England as a whole the proportions are 18% process & elementary and 28% managerial & professional.

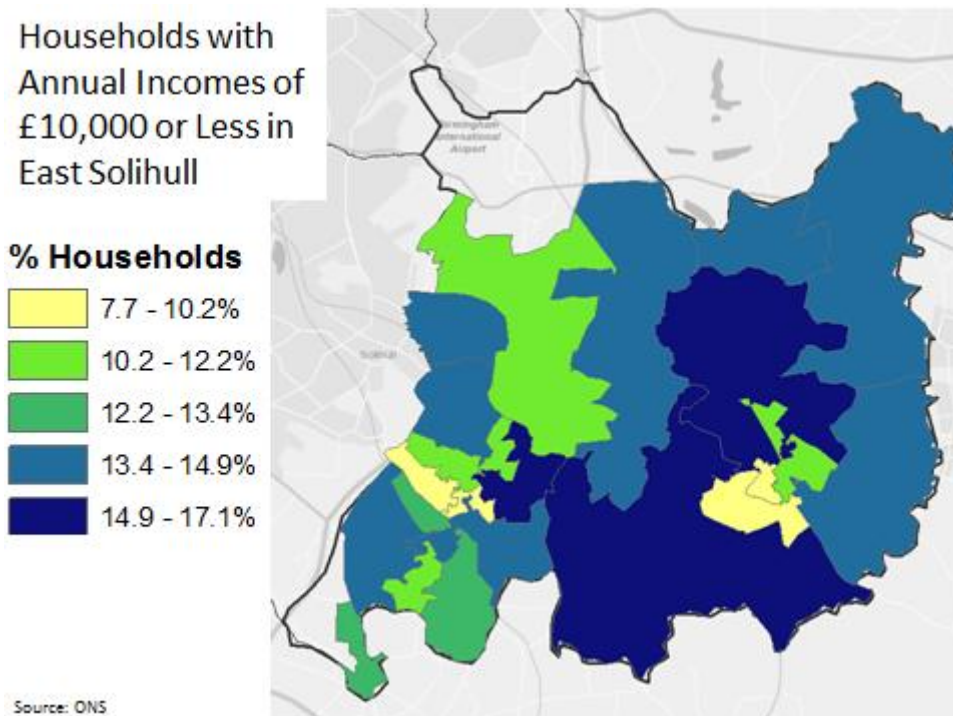
### Incomes and Poverty

41% of households in the East Solihull locality have an annual income of less than £20,000 compared with the Solihull and England averages of 52% and 57% respectively. The proportion on the lowest levels of annual incomes (£10,000 or less) are also below average (13% compared to 18% for England).

### Annual Household Incomes



Source: ONS



At the end of 2017 DWP statistics show that 853 individuals in East Solihull were claiming housing benefit. This represents 2.7% of the 18+ population, proportionally far less than either North (14.1%) or West (4.5%) Solihull and nearly three times less than the number across England as a whole (8.5%).

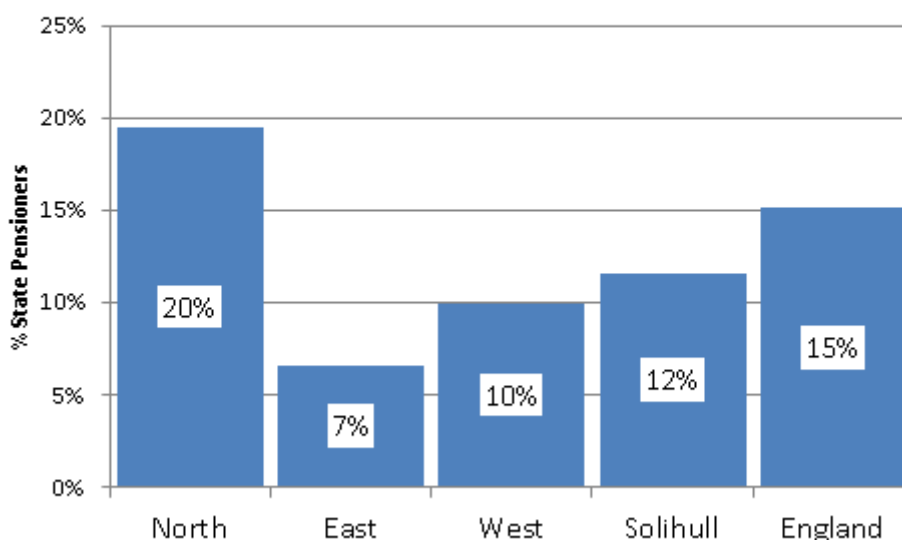
12% of claimants in East Solihull are under the age of 35, with a comparatively high 45% aged 65 and over, including over 319 claimants aged over 70 (37% of total). The housing benefit claimant rate is well below the England average for all age groups in North Solihull.

Age	Housing Benefit Claimants by Age Group				
	East Claimants	% of All Claimants		Rate (% Population)	
		East	England	East	England
Under 25	26	3%	4%	1%	3%
25 to 34	78	9%	16%	3%	8%
35 to 44	140	16%	18%	3%	10%
45 to 54	123	14%	18%	2%	9%
55 to 64	100	12%	14%	2%	8%
65+	386	45%	29%	4%	11%
Total	853			3%	8%

Source DWP

At the end of 2017 there were 625 older people in the East Solihull locality claiming pension credits. This represents 6.6% of all state pensioners in the area, a much smaller proportion than the Solihull (11.6%) or England (15.1%) averages.

## Pensioners Claiming Pension Credits



Source: DWP

The latest data shows that in May 2016 there were 325 children aged 0-15 living in in out of work benefit household in East Solihull with a further 60 young aged 16-18 doing so. The proportion of children and young people living in these out of work benefit households is proportionally much lower in East Solihull than elsewhere in the borough and across England as a whole.

	% Children Living in an Out of Work Benefit Household	
	Aged 0-15	Aged 0-18
North Solihull	28.0%	26.1%
West Solihull	6.6%	6.4%
East Solihull	4.4%	4.3%
Solihull Average	12.7%	11.9%
England	14.0%	13.4%

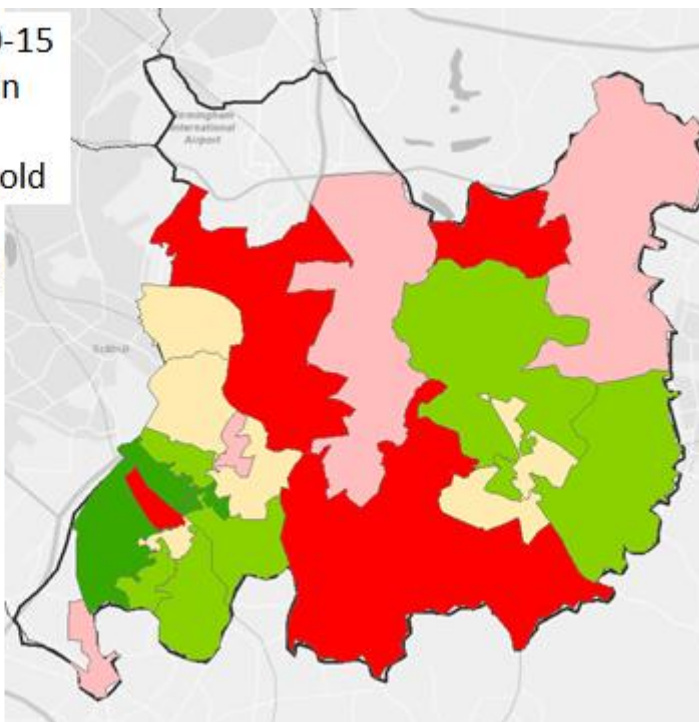
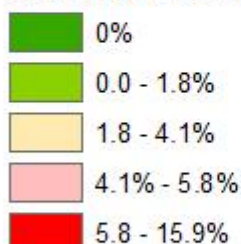
Source: DWP May 2016

Child poverty in East Solihull is low, with just over 4% of children aged 0-15 living in out of work benefit household. However, there is a considerably range at LSOA neighbourhood level, with particular hotspots at Chadwick End (16%), Bentley Heath South (12%) and Meriden West (12%).



Children Aged 0-15 Years Living in an Out of Work Benefit Household

% Children 0-15

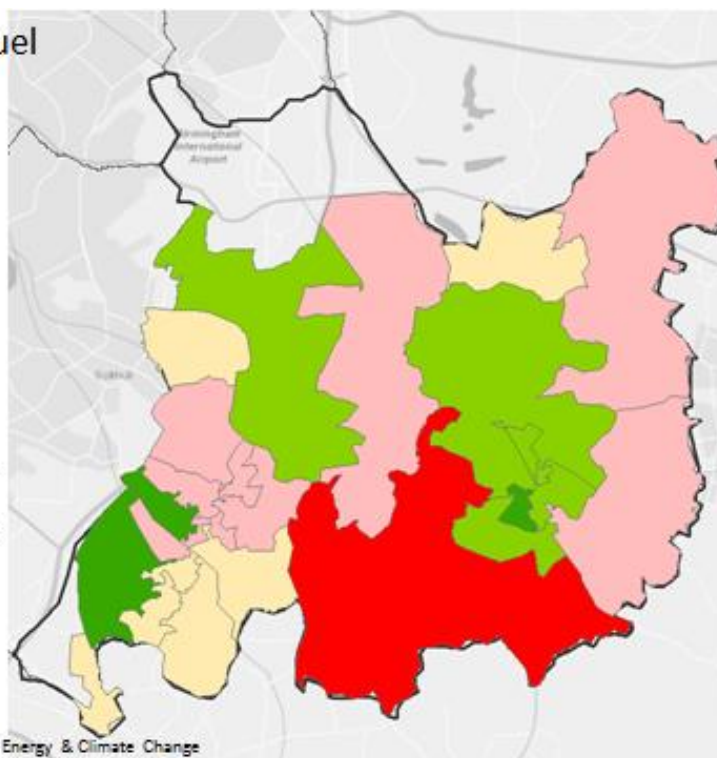
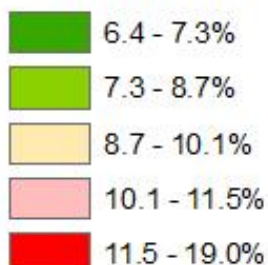


Source: DWP

The latest data shows that 1,590 households in East Solihull are classified as being in fuel poverty. At 9.9% of all households in the locality this is below both the Solihull (10.6%) and England (11%) averages. It should be noted that unlike other measures relating to income deprivation and poverty, the gap between East Solihull and the rest of the borough is less pronounced and at an individual LSOA neighbourhood level there are areas, such as rural Chadwick End (19%) where more than 10% of households are classified as being fuel poor.

Households in Fuel Poverty

% Households



Source: Department for Business, Energy & Climate Change

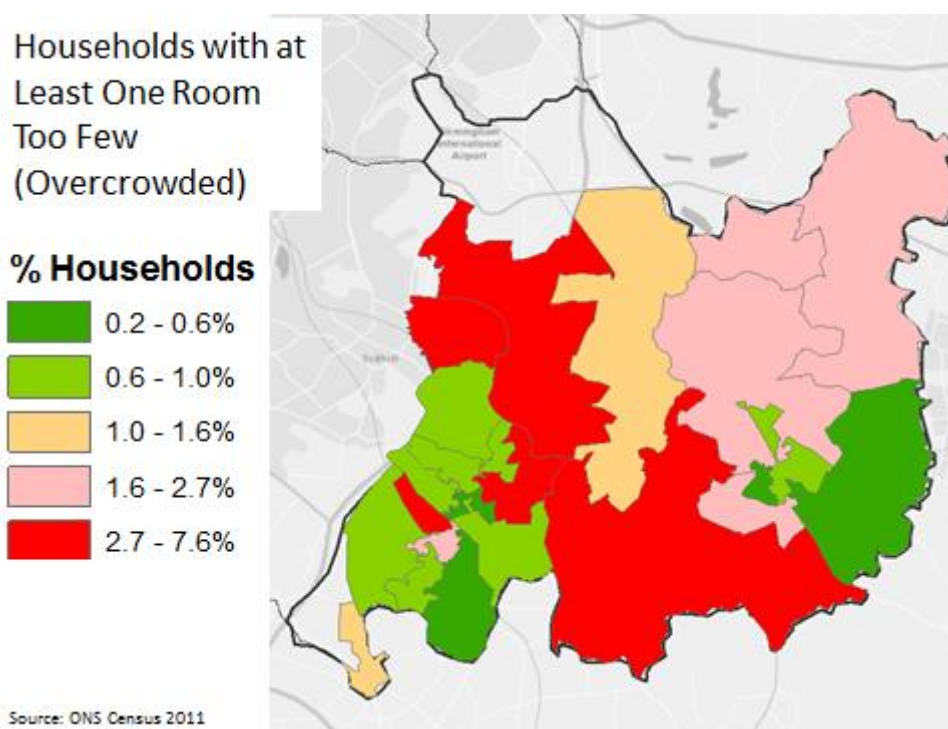
## Housing Need

At the time of the 2011 Census 360 households in the East Solihull locality had at least one room too few for the number of people in that household. On this basis 2.3% of households in East Solihull were classified as overcrowded. This is lower than elsewhere in Solihull and four times less than the England average (8.7%). On a similar basis 1.3% of households in East Solihull had at least one bedroom too few, again well below the England average (4.6%).

	East Households	% Overcrowded Households		
		East	Solihull Average	England
At least one room too few	360	2.3%	4.5%	8.7%
At least one bedroom too few	199	1.3%	2.6%	4.6%

*Source: ONS Census 2011*

Overcrowding is below the England average across East Solihull, although it is more common in a local context in the Coppice (8%), Knowle South (6%), Hampton Lane (6%) and Bentley Heath South (6%) LSOA neighbourhoods.



A total of 285 households with an East Solihull address are on the Housing Register and classified as having a housing need (Bands A-E)<sup>2</sup>. This represents 1.8% of all households in East Solihull compared to the Solihull average of 6.0%. The East Solihull locality accounts for just 6% of all Solihull households on the Housing Register.

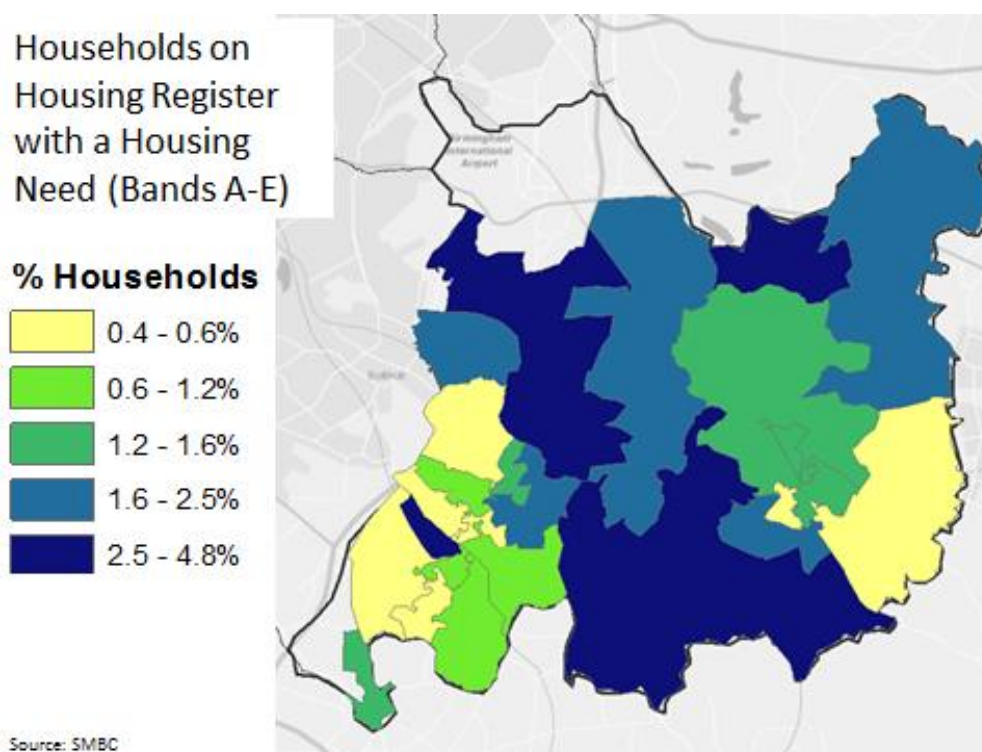
<sup>2</sup> Includes only those with an active status with a local address (excludes entries on Housing Register that give a care of address in Solihull)

There are 44 East Solihull households on the Housing Register classified as being in urgent housing need (Bands A-B). This represents 0.3% of all households in East Solihull.

Bands	East Solihull Households	% of all Households			
		East	North	West	Solihull Average
A	7	0.0%	0.3%	0.0%	0.1%
B	37	0.2%	2.0%	0.5%	0.9%
C2	11	0.1%	1.0%	0.2%	0.4%
C3	0	0.0%	0.1%	0.0%	0.0%
D	90	0.6%	4.4%	1.5%	2.2%
E	140	0.9%	5.2%	1.5%	2.4%
All Bands A-E	285	1.8%	12.9%	3.7%	6.0%
All Bands A-B	44	0.3%	2.2%	0.5%	1.0%

Source: SMBC

The proportion of households with a housing need (bands A-E) is low across East Solihull, although in a local context there are relative hotspots in the Coppice, Meriden West, Bentley Heath South and Chadwick End (all over 4%) LSOA neighbourhoods.



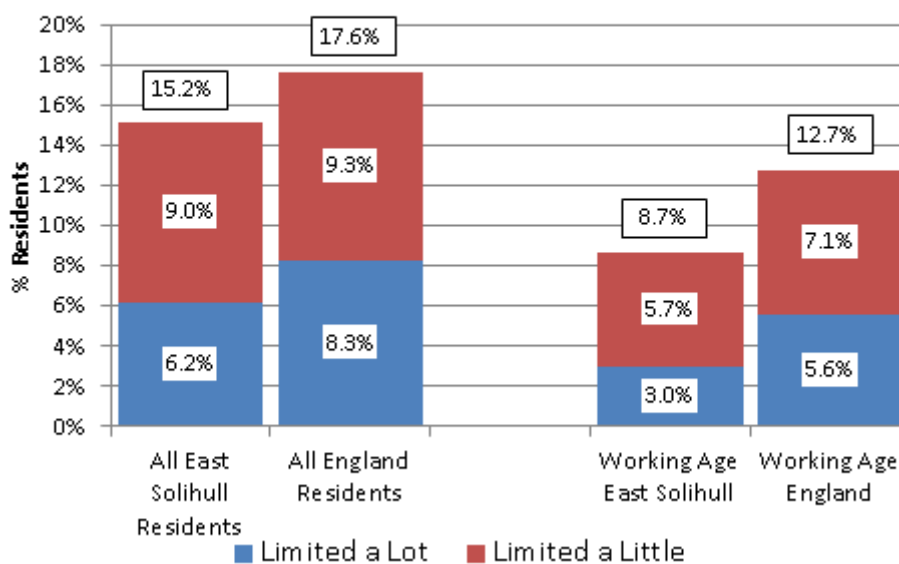
### Adult Health and Wellbeing

15% of the East Solihull population say that their day to day activities are limited by long-term illness or disability, compared with the England average of 18%. A similar differential is evident among those of working age (9% compared to 13%).

	East	East	Solihull	England
Whole Population				
Day-to-day activities limited a lot	2,367	6.2%	8.2%	8.3%
Day-to-day activities limited a little	3,476	9.0%	9.7%	9.3%
All Limited	5,843	15.2%	17.9%	17.6%
Day-to-day activities not limited	32,592	84.8%	82.1%	82.4%
Working Age Population (Age 16-64)				
Day-to-day activities limited a lot	679	3.0%	4.9%	5.6%
Day-to-day activities limited a little	1,319	5.7%	6.9%	7.1%
All Limited	1,998	8.7%	11.8%	12.7%
Day-to-day activities not limited	21,014	91.3%	88.2%	87.3%

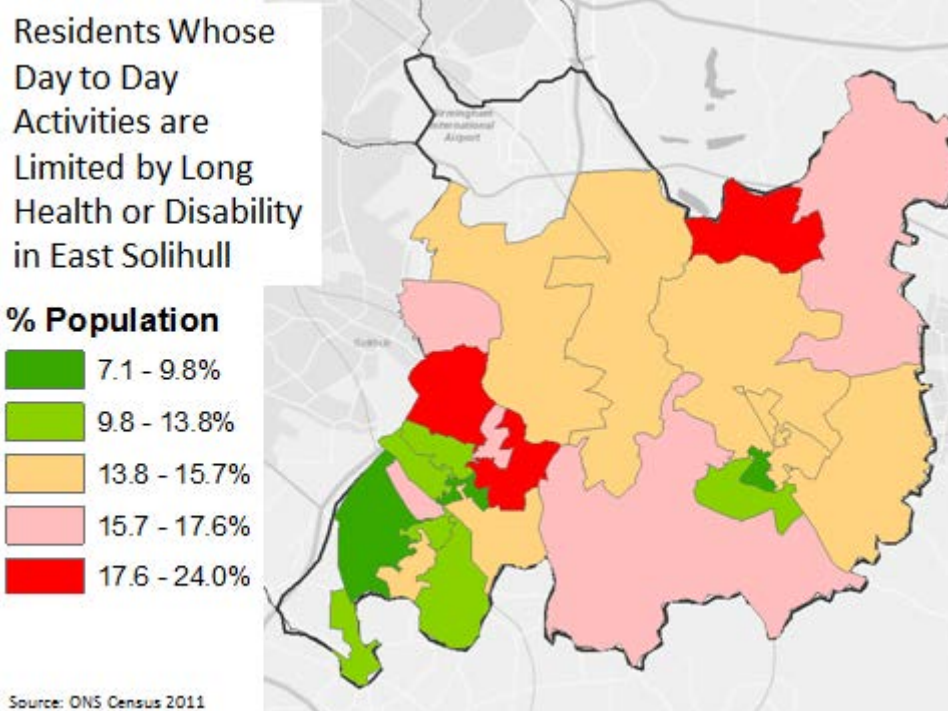
Source: ONS Census

### Population Whose Day to Day Activities are Limited by Ill Health or Disability

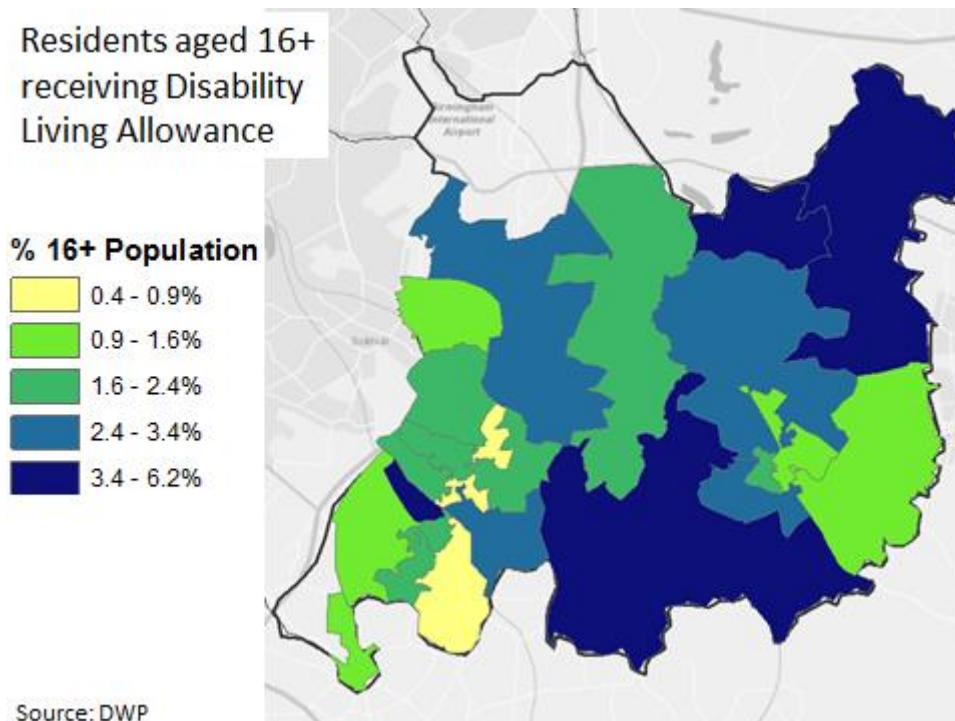


Although the proportion of East Solihull residents who say that their day to day activities are limited is below the England average (15% compared to 18%), in a local context there are a number of hotspots. Primarily these are Meriden West (24%), Knowle South (21%) and Copt Heath (20%).





A total of 740 individuals in East Solihull receive Disability Living Allowance, equating to 2.4% of the 16+ population, compared to the Solihull average of 3.8% and the England average of 4.0%.



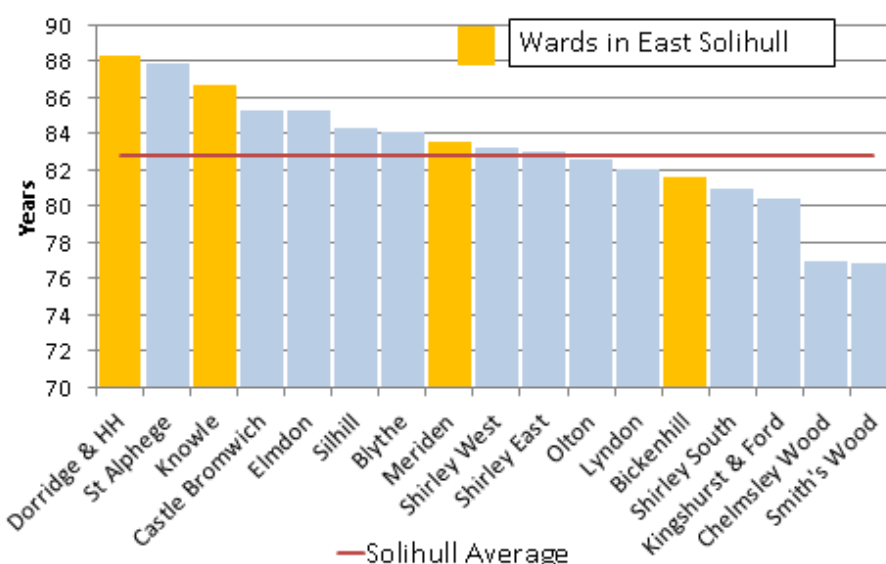
Life expectancy at birth is, above the Solihull average for wards the core East Solihull wards of Dorridge & Hockley Heath (highest in Solihull), Knowle (3<sup>rd</sup> highest) and Meriden. Bickenhill is slightly below average but the ward includes the relatively deprived neighbourhoods in the north of the ward which fall outside of the East locality area. Above

average Life Expectancy applies to both males and females and is consistent with the self reported health measures in the Census.

	Life Expectancy at Birth (Years) 2014-16		
	All People	Males	Females
Bickenhill	81.6	80.6	82.5
Dorridge & Hockley Heath	88.3	86.1	90.5
Knowle	86.7	84	89.5
Meriden	83.6	81.6	85.5
Solihull Average	82.8	80.9	84.7

Source: SMBC

### Life Expectancy at Birth 2014-16

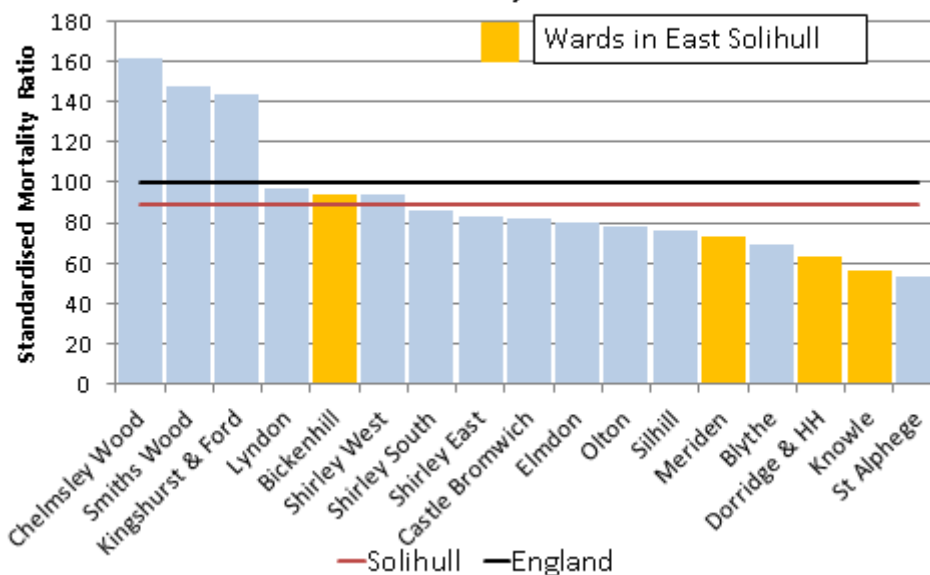


Deaths under the age of 75 (classified as premature mortality) are less common in all wards in East Solihull than across England as a whole, with Dorridge & Hockley Heath, Knowle and Meriden among the lowest in Solihull. Bickenhill has a higher standardised mortality ratio than the other wards in East Solihull, but is still below the England average. This pattern applies to early deaths from cancer, circulatory disease and coronary heart disease.

	Deaths Under Age of 75 (Standardised Mortality Ratio)			
	All Causes	Cancer	Circulatory Disease	Coronary Heart Disease
Bickenhill	94.0	97.0	82.4	77.4
Dorridge & Hockley Heath	62.9	74.5	48.1	41.4
Knowle	56.6	63.6	41.7	40.0
Meriden	73.3	89.5	59.2	57.7
Solihull Average	89.0	96.9	81.0	81.2
England Average	100	100	100	100

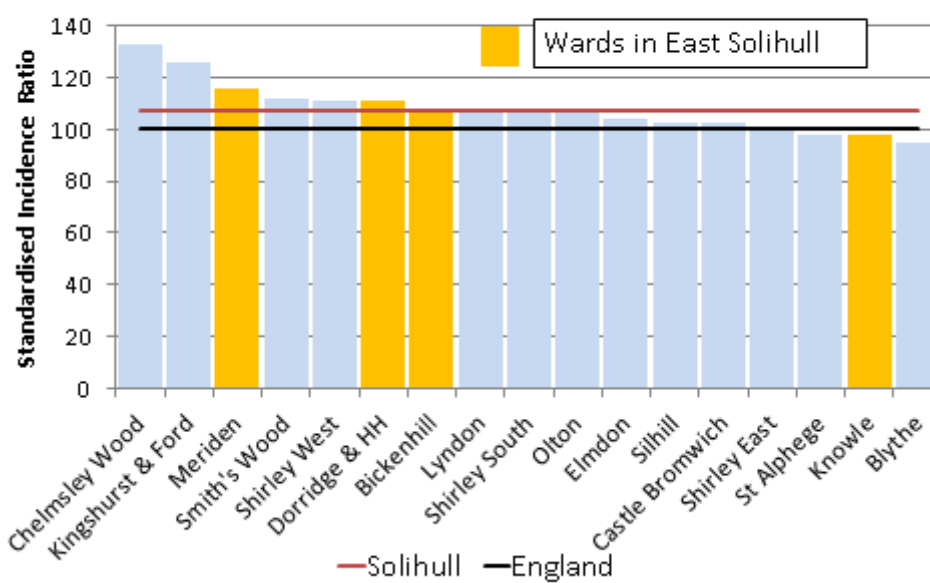
Source: Public Health England

## Premature Mortality (Deaths Under Age of 75)



The incidence of cancer varies considerably across East Solihull, with the Knowle ward having one of the lowest overall incidence in the borough, but Meriden at the upper end of the spectrum.

## Incidence of All Cancers



However, the pattern varies by type of cancer, with lung cancer much less prevalent in East Solihull than elsewhere in the borough, but breast cancer and prostate cancer more common.

	Cancer Incidence (Standardised Incidence Ratio)				
	All Cancer	Breast Cancer	Colorectal Cancer	Lung Cancer	Prostate Cancer
Bickenhill	107.6	98.7	104.9	114	125.8
Dorridge & Hockley Heath	111	118.3	100.6	54	177.2
Knowle	97.9	113.7	76.2	63.7	159.2
Meriden	115.3	132.2	124.5	64.3	170.7
Solihull Average	107.1	105.4	103.3	90.5	137.8
England Average	100	100	100	100	100

*Source: Public Health England*

Modelled estimates from Public Health England show that proportionally fewer adults in the core East Solihull wards of Dorridge & Hockley Heath, Knowle and Meriden are classified as obese. Bickenhill is above the England average, although this ward includes some relatively deprived neighbourhoods which lie in the North Solihull locality. The levels of obesity are consistent with the proportion of adults eating healthily.

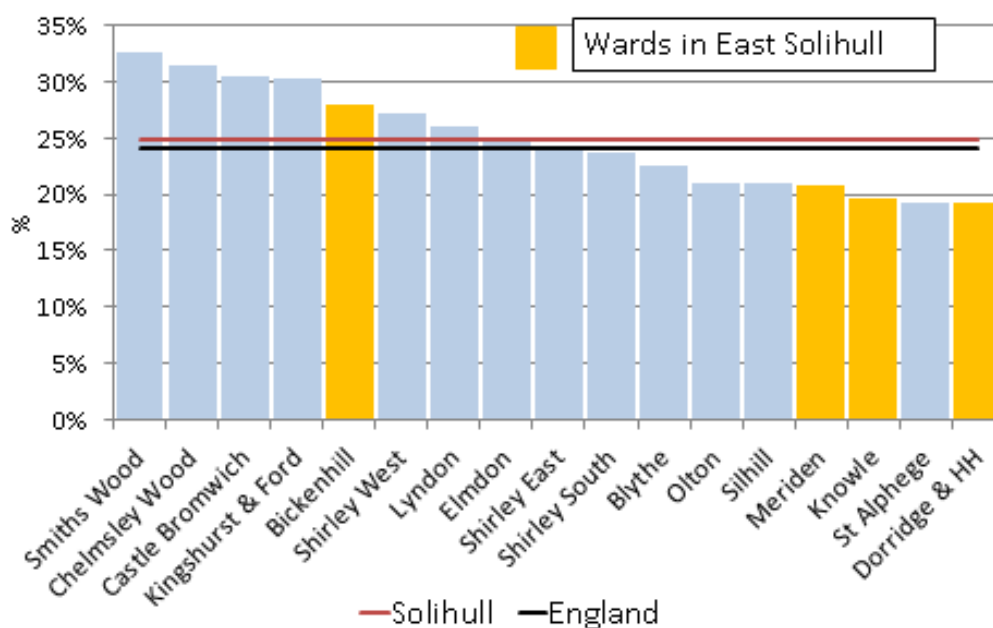
The modelled estimates of the number of binge drinking adults in East Solihull are far more closely aligned with the England average, although hospital data shows that stays for alcohol related harm are much lower than average in East Solihull wards.

	Obese adults	Binge drinking adults	Healthy eating adults
Bickenhill	28.0%	21.0%	25.8%
Dorridge & Hockley Heath	19.2%	19.3%	35.2%
Knowle	19.7%	20.3%	35.3%
Meriden	20.8%	22.5%	35.2%
Solihull	24.9%	20.2%	28.5%
England	24.1%	20.0%	28.7%

*Source: Public Health England*

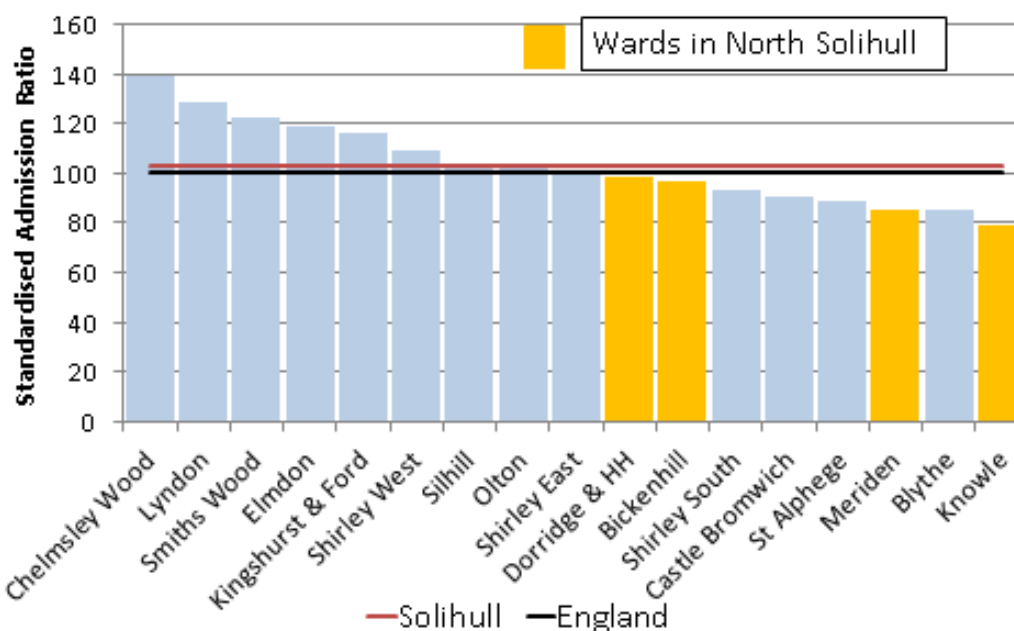


## Obese Adults



Source: Public Health England

## Hospital Stays for Alcohol Related Harm



Source: Public Health England

Data from the Solihull Place Survey shows that 9% of East Solihull respondents say that they have not been physically active over the last week. At the other end of the spectrum 60% say that they are active on a daily basis, in-line with the Solihull average.

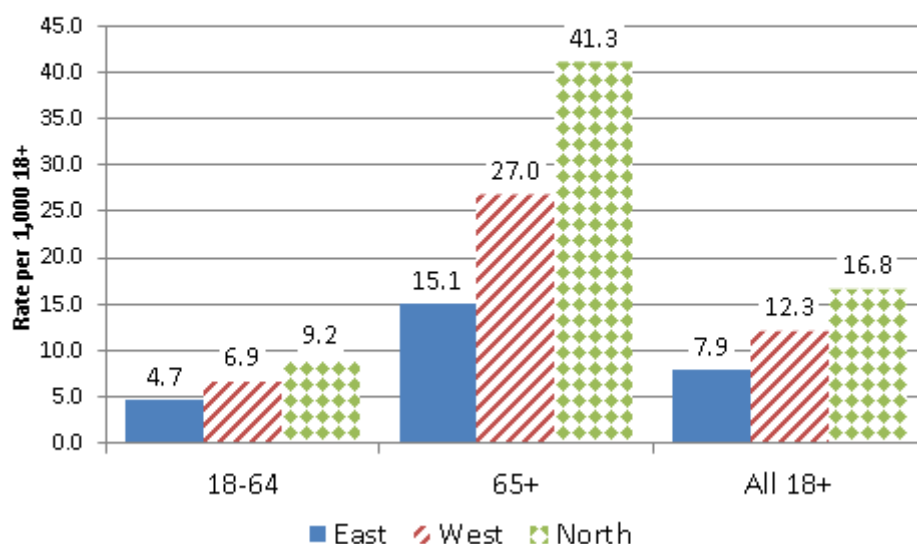
On how many of the last 7 days were you physically active continuously for 20 minutes or longer?			
	East Total	% Respondents	
		East	Solihull Average
None	12	9%	10%
1 to 2 Days	10	7%	9%
3 to 4 Days	32	24%	21%
5 Days and over	81	60%	60%
Total	134		

Source: SMBC Place Survey 2018

### Adult Social Care

There are currently 249 adults in East Solihull aged 18 and over receiving support from Solihull adult social care (101 aged 18-64, 148 aged 65 and over)<sup>3</sup>. This equates to 7.9 per 1,000 residents the lowest rate among the three Solihull localities. East Solihull has proportionally fewer Adult Social Care clients aged 18-64 and 65+ than elsewhere in the borough.

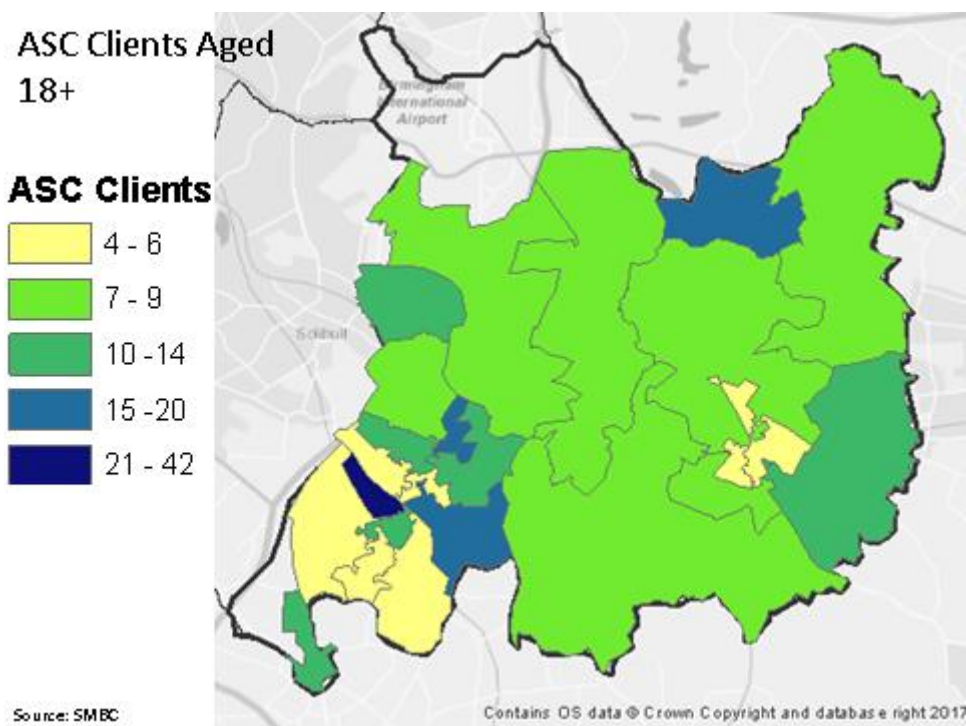
### Adult Social Care Clients (Rate per 1,000 Population)



77% of adults in East Solihull receiving a package of care from adult social services are in receipt of some form of community support (including homecare and daycare), 18% are in a care home setting (residential, nursing and extra care) and 6% are in Supported Living. Community care is the most common type of support among both adults aged 18-64 (67%) and older people aged 65 and over (83%).

<sup>3</sup> Excludes those receiving reablement support

As the map below shows there are particular concentrations of Adult Social Care clients in the Dorridge & Hockley Heath and Knowle wards, reflecting the location of care homes and extra care schemes.

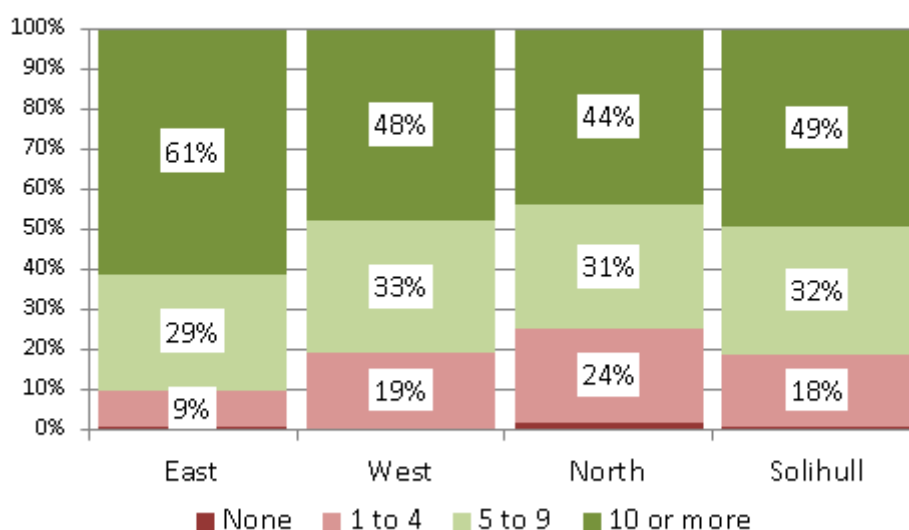


## Social Isolation

Responses from the 2018 Place Survey show that most people who live in East Solihull know five or more people in their immediate neighbourhood and say that a neighbour would definitely or possibly help them if they were to fall ill. Like Solihull as a whole most respondents from West Solihull do not feel socially isolated. However, from a social isolation point of view the rural nature of much of East Solihull allied to the proportion of older people living alone does present some risk.

Less than 1% of East Solihull respondents to the Place Survey say that they do not now anybody in their immediate neighbourhood by name, while at the other end of the spectrum 90% say that they know at least five people (including 61% who know 10 people or more).

### How many People in your Neighbourhood do you Know by Name?



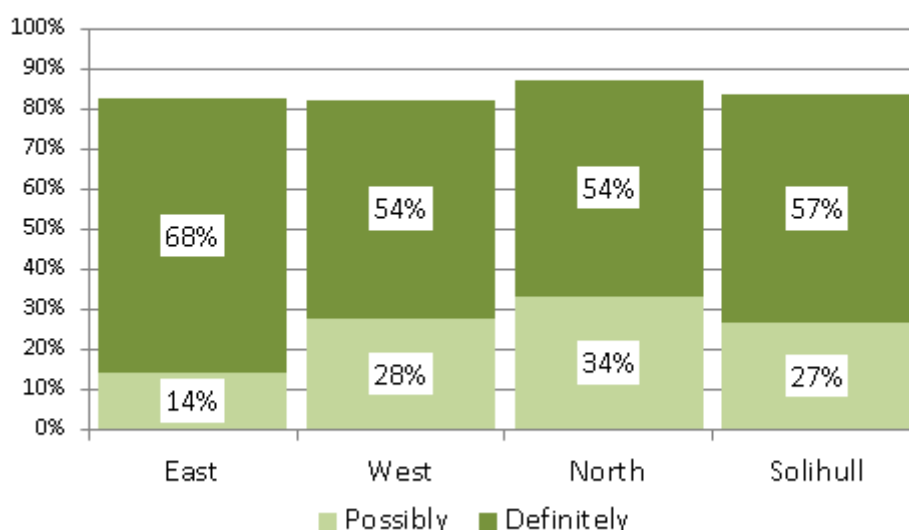
Source: SMBCPlace Survey 2018

83% of residents in the East Solihull locality think that it is likely that a neighbour would give them practical help if they were to fall ill (68% definitely, 14% possibly) compared to just 17% who think that it is either fairly or very unlikely they would get help.

	If you were to fall ill, do you think neighbours would give you practical help?		
	East Total	% Respondents	
		East	Solihull Average
Yes, definitely	92	68%	57%
Yes, possibly	19	14%	27%
Fairly unlikely	16	12%	10%
Very unlikely	8	6%	7%
Total	134		

Source: SMBC Place Survey 2018

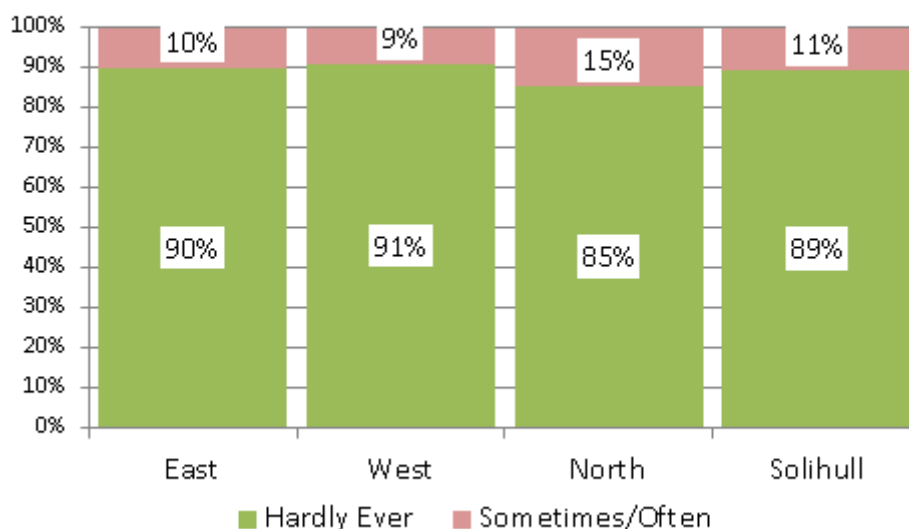
### Respondents who think neighbours would help them if they fell ill



Source: SMBCPlace Survey 2018

90% of respondents from East Solihull say that hardly ever feel isolated from others, with 10% saying that they sometimes do, broadly in-line with the positive response across Solihull as a whole.

### How Often Do You feel Isolated from Others?

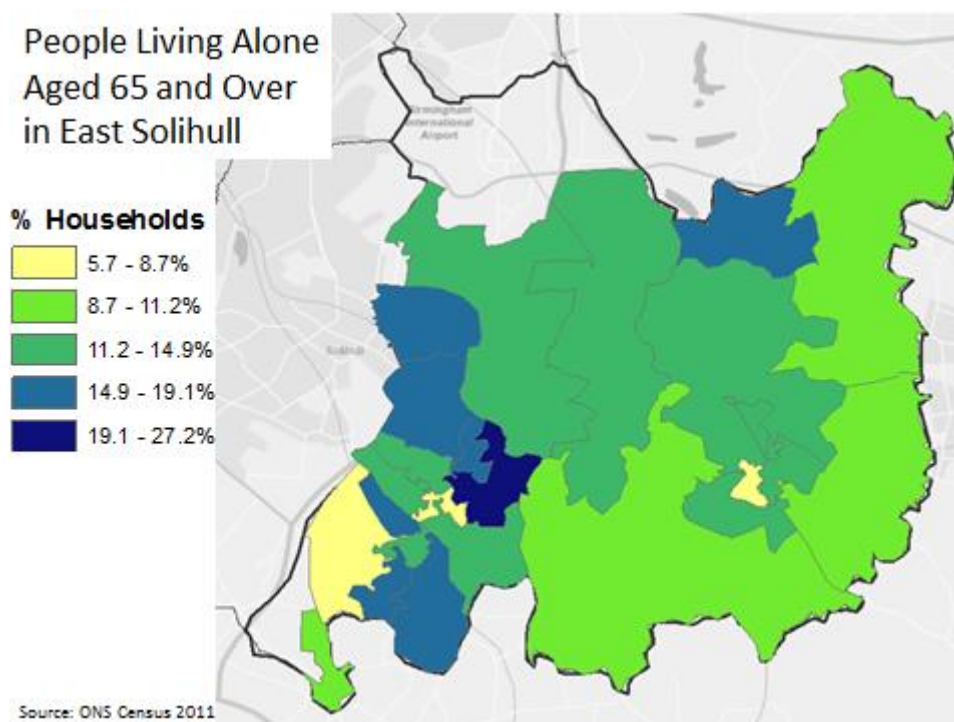


Source: SMBCPlace Survey 2018

Research evidence shows that there are a variety of risk factors associated with social isolation. For instance, people employed in manual occupations, those with lower level qualifications and those on lower incomes are less likely to extensive social networks. Fear

of crime, ill health and unemployment all described elsewhere in this profile can also be a factor.

Older people living alone and those caring from someone with a long-term condition or disability are particularly vulnerable to social isolation. Older people living alone account for just over 14% of all households in the East Solihull locality, although the proportion rises to more than 25% in the Knowle South LSOA neighbourhood with a further concentration in Meriden West (19%).



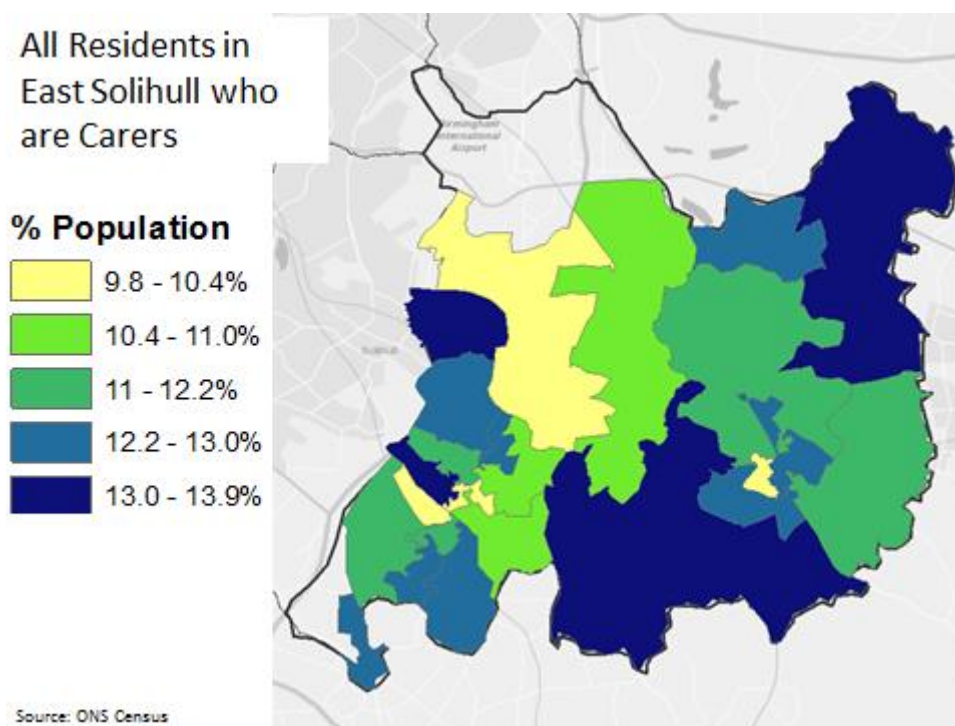
12% of East Solihull residents provide unpaid care for a relative, friend or neighbour, broadly in-line with the Solihull average and just above that for England as a whole. A large majority of these carers provide 1 to 19 hours of care per week, with 680 individuals (1.8% of population) providing care for 50 hours or more per week.

	East Total	% Population		
		East	Solihull Average	England
1 to 19 hours care	3,541	9.2%	7.8%	6.5%
20 to 49 hours care	407	1.1%	1.4%	1.4%
50+ hours care	680	1.8%	2.5%	2.4%
All Carers	4,628	12.0%	11.7%	10.2%
Non-Carers	33,807	88.0%	88.3%	89.8%

Source: ONS Census 2011

As the map below shows, at an LSOA neighbourhood level, there is a relatively narrow range in the proportion of residents who provide unpaid care. The highest concentrations in

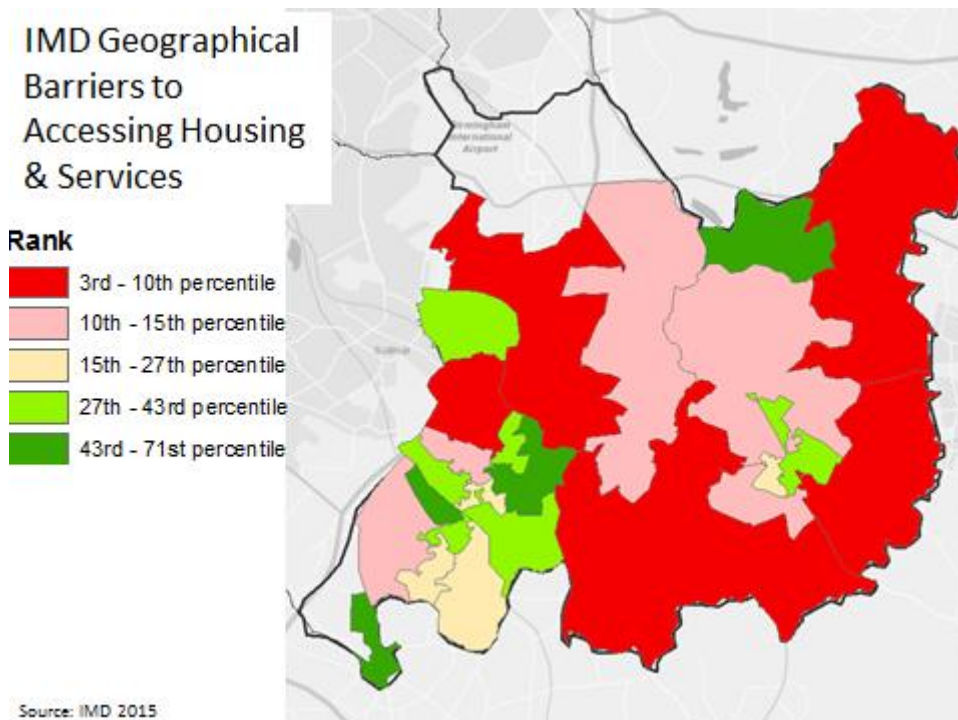
East Solihull (all between 13-14%) are found in Meriden East, Bentley Heath North, Chadwick End and Hampton Lane.



A specific local risk is the relative distance from services and community facilities for many residents in semi-rural East Solihull. The map below shows that a number of East Solihull LSOAs are among the 10% most geographically isolated neighbourhoods in the country and face significant barriers to accessing services as a result<sup>4</sup>. Meriden East (3<sup>rd</sup> percentile) and Chadwick End (4<sup>th</sup> percentile) are among the 5% LSOAs in England from this perspective, with Coppice, Copt Heath and Catchems Corner also in the bottom 10%.

<sup>4</sup> The Geographical Barriers to Access to Housing and Services is a sub-component of the Barriers to Access to Housing Services Domain of the 2015 Index of Multiple Deprivation.





### Children & Young People and Education

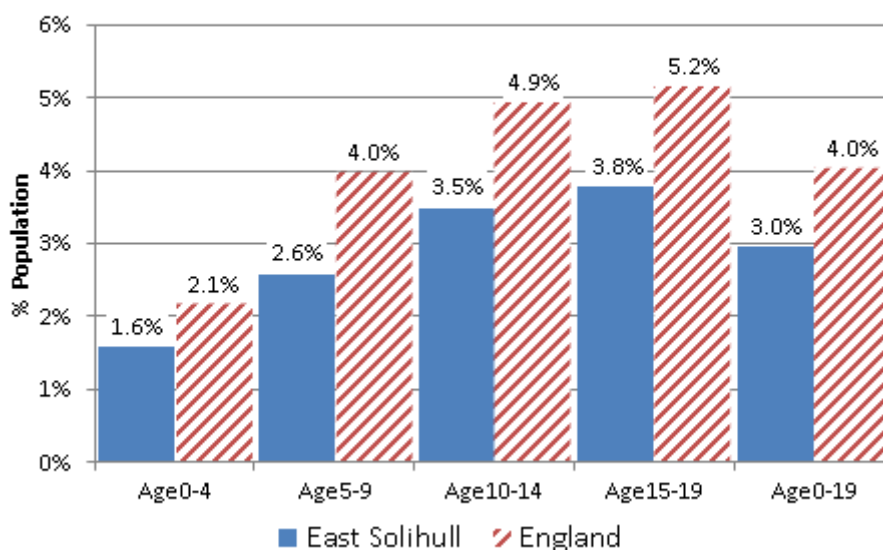
At the time of the 2011 Census the day to day activities of 262 children and young people aged 0-19 years in the East Solihull locality were limited by their long-term health or disability. This represents 3.0% of all children & young people aged 0-19 in the area, proportionally fewer than the England (4%) and Solihull averages (4.1%). The proportion with whose activities are limited is below average in East Solihull for all age groups.

<b>Children &amp; Young People whose Day to Day Activities are Limited by Long-Term Health or Disability</b>				
Age Group	East	% Population		
		East	Solihull Average	England
Age 0-4 Years	28	1.6%	1.9%	2.1%
Age 5-9 Years	56	2.6%	4.2%	4.0%
Age 10-14 Years	92	3.5%	4.9%	4.9%
Age 15-19 Years	86	3.8%	5.0%	5.2%
All Age 0-19 Years	262	3.0%	4.1%	4.0%

Source: ONS Census 2011



### Children & Young People Whose Day to Day Activities are Limited by Ill Health or Disability



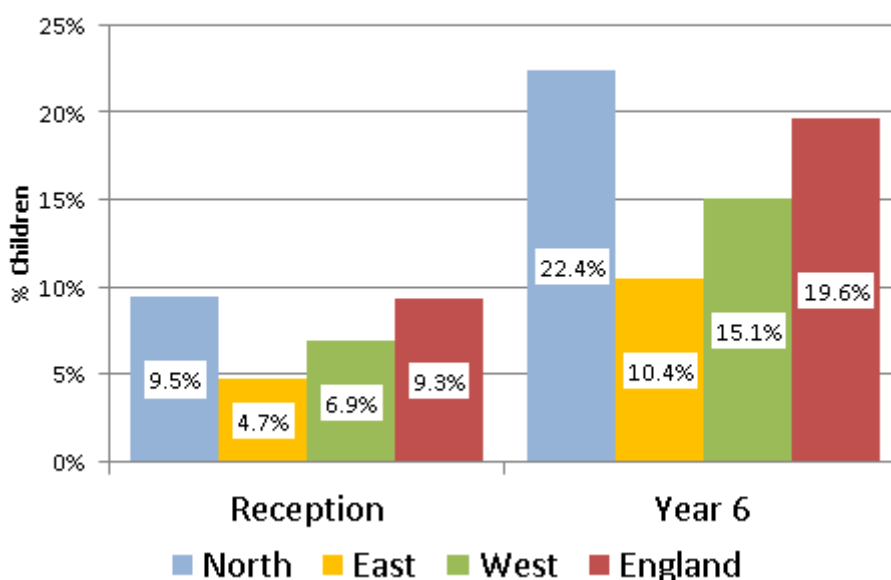
Source: ONS Census 2011

There are proportionally fewer children classified as obese in the East Solihull locality than either the England or Solihull averages. Nationally, obesity amongst children has been rising in recent years, particularly among Year 6 children (aged 10-11). However, this does not appear to be the case in East Solihull with the prevalence among reception age children and those in year 6 falling slightly between 2010/11 and 2016/17.

	Obese children (Reception)	Obese children (Year 6)
North Solihull	9.5%	22.4%
East Solihull	4.7%	10.4%
West Solihull	6.9%	15.1%
Solihull	7.4%	16.7%
England	9.3%	19.6%

Source: National Child Measurement Programme, NHS Digital 2014-2017

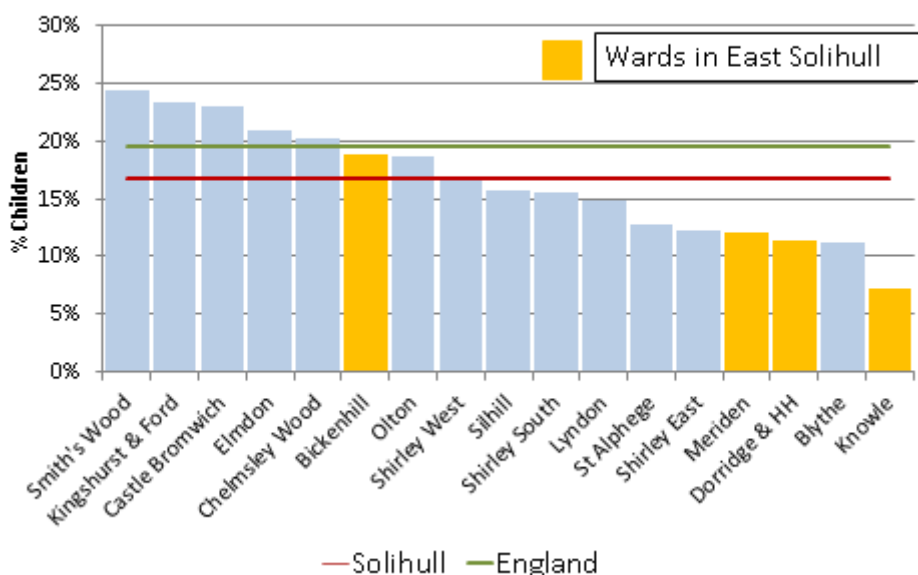
## Children Classified as Obese



Source: National Child Measurement Programme, NHS Digital

As the chart below shows wards in East Solihull have among the lowest levels of year six obesity in Solihull and are all significantly below the England average.

## Children in Year 6 Classified as Obese



Source: National Child Measurement Programme, NHS Digital

Demand for Childrens Services is much lower in East Solihull than elsewhere in the borough. By way of example the table below shows the number of children per 1,000 either classified as being Children in Need (CIN) or in Child Protection. Just 6% of all children aged 0-16 years of age known in this way to Solihull Childrens Services live in East Solihull. The low concentration in the East Solihull locality applies across all age groups.

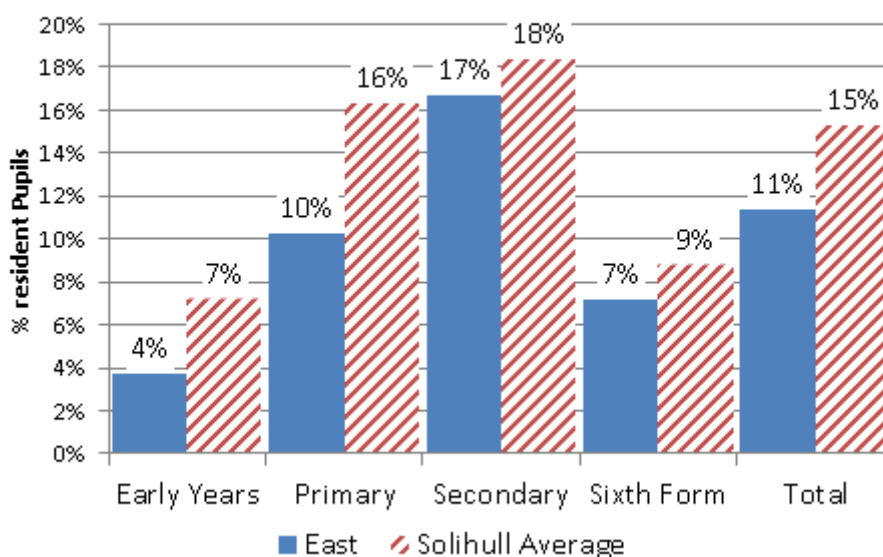
	Children Known to Social services (Children in Need and Child Protection)			
	Number of Children in East	% Solihull Total	Rate per 1,000 Population	
			East	Solihull Average
Under 5	12	5%	5.9	18.9
Age 5-10	12	4%	4.2	20.3
Age 11-16	25	9%	8.3	19.1
All Aged 0-16	49	6%	6.2	19.5
<i>Source: SMBC</i>				

At the time of the Autumn 2017 school Census there were 630 children living in East Solihull with a Special Educational Need (116 with an Education or Health Care Plan or Statement of SEN with a further 514 receiving SEN support). This equates to 11% of all children, compared to the average of 15% across Solihull as a whole.

As the table below shows the proportion of children living in East Solihull with an SEN is lower than elsewhere in Solihull among all age groups.

<b>% Resident Children with a Special Educational Need</b>				
School Year	East	North	West	Solihull Average
Early Years (Nursery & Reception)	4%	12%	5%	7%
Primary (Years 1-6)	10%	22%	15%	16%
Secondary (Years 7-11)	17%	24%	16%	18%
Further Education (Years 12-13)	7%	11%	8%	9%
Total	11%	21%	14%	15%
<i>Source: SMBC School Census</i>				

### Resident Pupils with a Special Educational Need

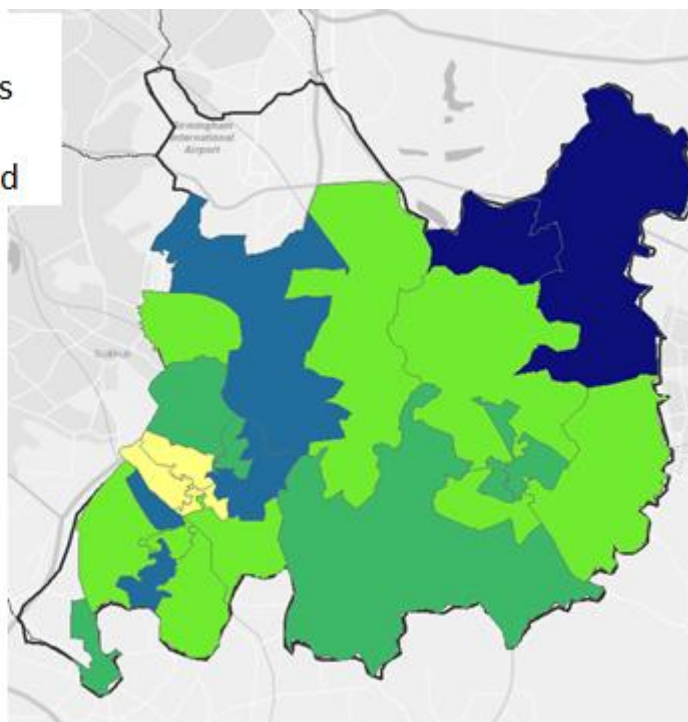
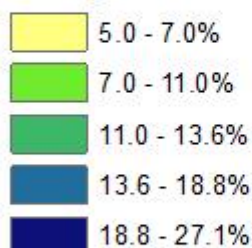


Source: SMBC School Census

Although the proportion of children with a SEN is below average across East Solihull as a whole, there are a number of neighbourhoods with relatively high concentrations. As the map below shows 27% of primary and secondary school pupils in Meriden West have a SEN, with a similarly above average number in Meriden East (22%) and Coppice (19%).

#### Primary and Secondary Pupils with a Special Educational Need

##### % Pupils



Source: SMBC School Census

Not all resident pupils attend a school in East Solihull and not all pupils at an East Solihull school will live in the locality, with cross border flows particularly evident at Secondary school level.

There are 11 primary schools based in the East Solihull locality. The table below shows key metrics for these schools for the school year 2016/17.

Proportionally fewer pupils attending an East Solihull primary school have a Special Educational Need and are eligible for a Free School Meal. Proportionally more pupils achieve the expected standard in reading, writing and Maths at KS2 than elsewhere in Solihull, with East Solihull schools also exceeding the Solihull and England averages in terms of the percentage of pupils achieving a higher standard.

<b>Primary schools 2016/17</b>			
Measure	East Solihull Schools	Solihull Average	England
SEN pupils with a statement or EHC plan	1.2%	3.8%	2.9%
SEN support	8.8%	12.1%	12.0%
SEN Total	10.0%	15.9%	14.9%
% FSM	5.4%	15.0%	15.1%
% Pupils Persistent Absentees	4.8%	7.5%	8.3%
% English as Second Language	4.6%	9.7%	20.8%
% Pupils Meeting Expected Standard	71.7%	65.0%	61%
% Pupils Meeting Higher Standard	13.5%	10%	9%
<i>Source: Department for Education</i>			

There are just two secondary schools based in the East Solihull locality. The table below shows key metrics for these schools for the school year 2016/17.

Proportionally far fewer pupils attending an East Solihull secondary school are eligible for a Free School Meal than across England as a whole and less have a Special Educational Need (12% compared to 15%). The average attainment 8 per pupil at KS4 is higher than elsewhere in Solihull and the England average.

<b>Secondary schools 2016/17</b>			
Measure	East Solihull Schools	Solihull Average	England
SEN pupils with a statement or EHC plan	1.2%	5.2%	4.3%
SEN support	10.8%	11.5%	10.5%
SEN Total	12.0%	16.7%	14.8%
% FSM	4.6%	13.9%	14.4%
% Pupils Persistent Absentees	10.6%	15.3%	13.5%
% English as Second Language	2.5%	6.3%	16.1%
Average Attainment 8 Score	54.5	47.1	44.6
% Pupils Disadvantaged Pupils Achieving A*-C in English & Mathematics	45.4%	44.5%	43.1%
% Pupils Non-Disadvantaged Pupils Achieving A*-C in English & Mathematics	79.4%	71.7%	70.6%
<i>Source: Department for Education</i>			

## Crime and Community Safety

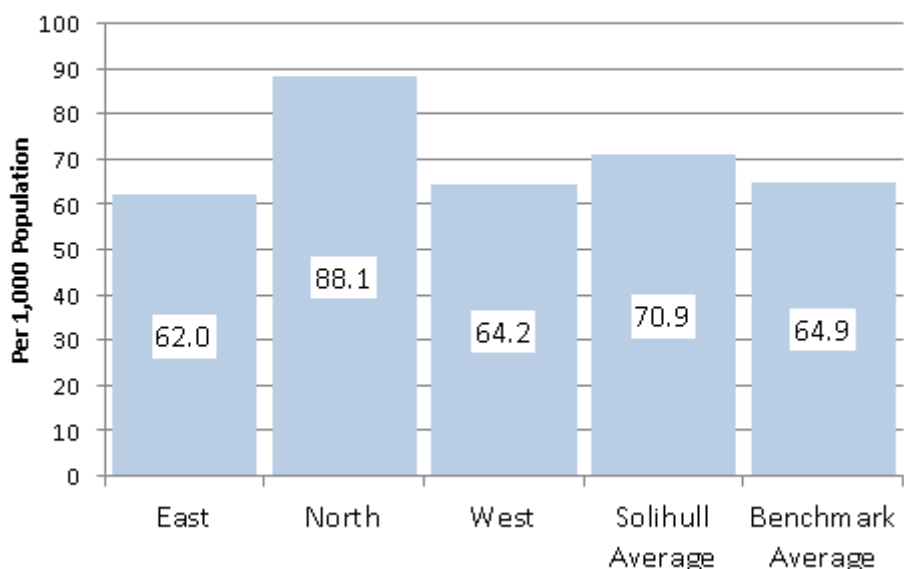
Solihull has the third lowest crime rate compared to the other local authority areas in the West Midlands (out of 7) and is ranked 11 out of 15 among its benchmark group of Local Authorities. Over recent years crime has been increasing, with key trends including rises in burglary, robbery and vehicle crime. However, this is not exclusive to Solihull and the same increases can be seen across the whole of the West Midlands Police Force.

Some areas in Solihull have factors that make them more likely to become crime generators and attractors and therefore account for a higher proportion of crime than others. This is the case with Chelmsley Wood, St Alphege and Kingshurst & Fordbridge where crime rates were 1.5 times the average for Solihull as a whole. By contrast, Knowle had half the average number of crimes with Dorridge & Hockley Heath, Elmdon, Shirley East, Meriden, Blythe and Silhill also well below average.

There were 2,471 total reported crimes recorded in East Solihull in the year to September 2017, representing 17% of all reported crimes in the borough. At 62.0 per 1,000 population East Solihull has the lowest crime rate out of the three locality areas where the borough average is 70.9 per 1,000.

	Crime & Safety Demand			
	East Count	% Solihull Total	Rate per 1,000	
			East	Solihull Average
Total Recorded Crime	2,471	17%	62.0	70.86
<b>Other Demand Measures</b>				
Anti-Social Behaviour	390	11%	9.8	14.71
Public Safety & Welfare	4,111	20%	103.2	98.06
Road Traffic Collisions - KSI	20	34%	0.50	0.27
Deliberate Fires	25	12%	0.63	1.19
<i>Source: Safer Solihull Strategic Assessment 2018</i>				

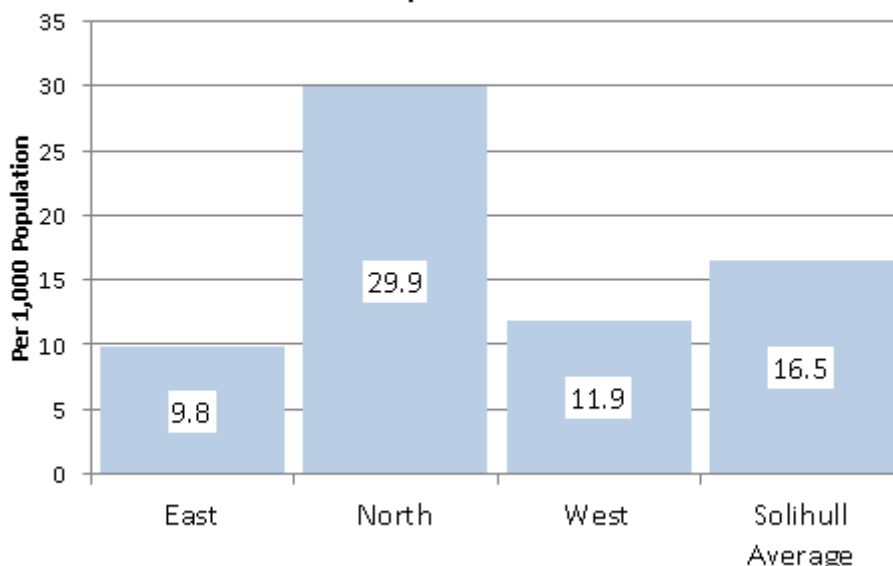
### Recorded Crime Rates per 1,000 Population



Source: Safer Solihull Strategic Assessment 2018

There were 390 incidents of Anti-Social Behaviour (ASB) in the East Solihull locality in the year to September 2017, representing just 11% of the Borough total. At 9.8 per 1,000 population the ASB rate is well below the Solihull average.

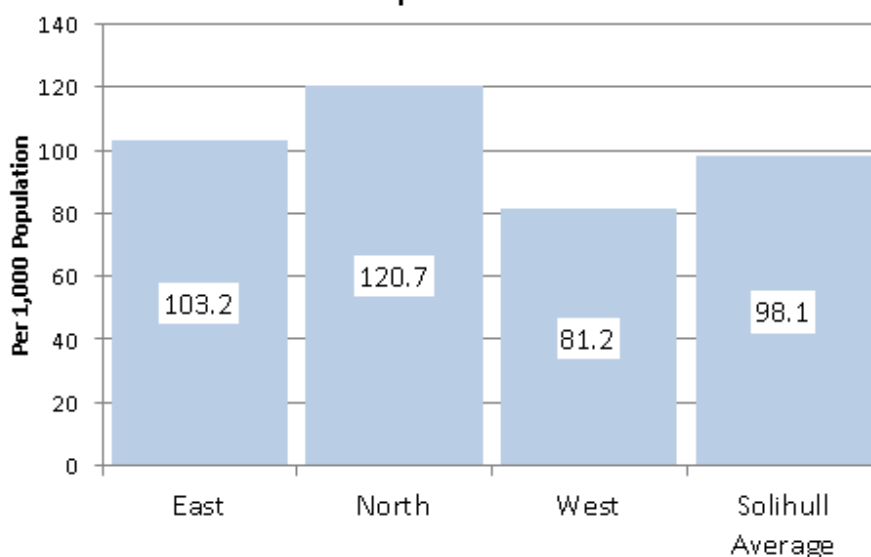
### Recorded Anti-Social Behaviour Rates per 1,000 Population



Source: Safer Solihull Strategic Assessment 2018

There were 4,111 Public Safety & Welfare (PSW)<sup>5</sup> incidents recorded in the East Solihull locality in the year to September 2017. At 103.2 per 1,000 population the PSW rate is slightly above the Solihull average, although it is notably that the differential between the three localities is much less than ASB.

### Recorded Public Safety & Welfare Rates per 1,000 Population



Source: Safer Solihull Strategic Assessment 2018

Total recorded crime in the East Solihull locality increased by nearly 19% in the year to September 2017, higher than the West Midlands Police average of 13.9%. Over the same period Anti-Social Behaviour increased by nearly 26% compared to a fall recorded across the West Midlands Police force area as a whole (4.4%).

Offence Group	Oct 15-Sep 16	Oct 16-Sep 17	Difference			
			East Solihull Count	East Solihull	Solihull Average	West Midlands Force
Total Recorded Crime	2,081	2,471	+390	+18.7%	+20.2%	+13.9%
<b>Other Demand Measures</b>						
Anti-Social Behaviour	310	390	+80	+25.8%	+11.1%	-4.4%
Public Safety & Welfare	3,811	4,111	+300	+7.9%	+6.5%	+1.9%
KSI	20	20	0	0.0%	0.0%	-12.2%
Deliberate Fires	14	25	+11	78.6%	+47.1%	+27.7%

Source: Safer Solihull Strategic Assessment 2018

<sup>5</sup> Due to the subjective nature of Anti-Social Behaviour and Public Safety/Welfare, there is a cross over between the two classifications which is why both have been included for analysis. Recordings of incidents of Public Safety/Welfare outnumber Anti-Social Behaviour by approx. 5 to 1.



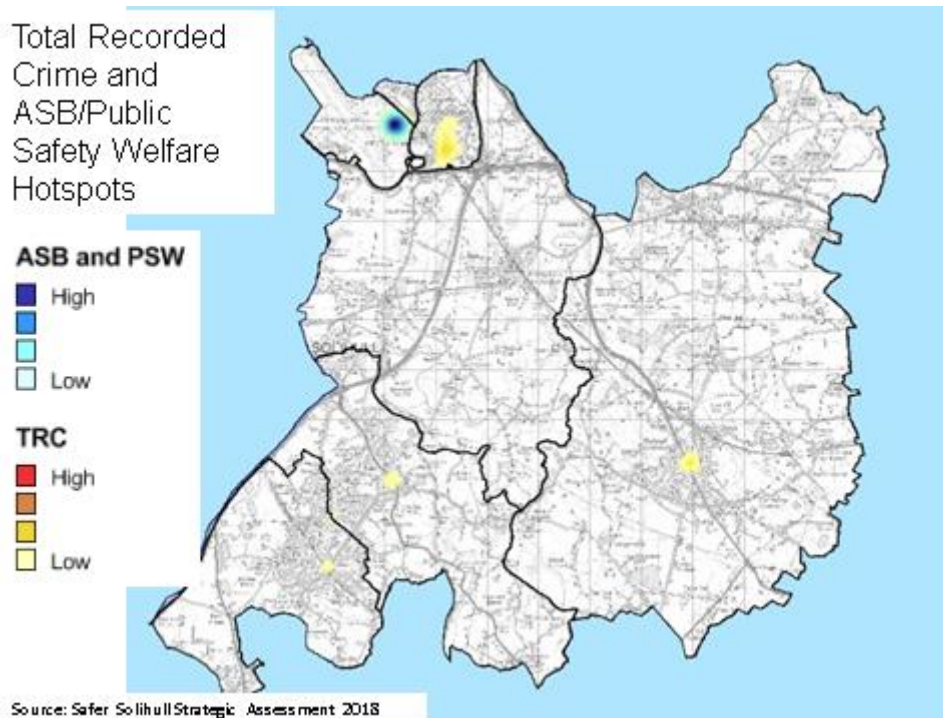
As the table below shows the top 10 offences accounted for 69.2% of Total Recorded Crime in the East area.

Top 10 Individual Offences	Crime Count
Theft from Motor Vehicle	382
Theft Other	322
Make off w/o payment	175
Burglary Residential	165
Theft from Shop or stall	143
Theft of Motor Vehicle	124
Criminal Damage to vehicle	117
Assault Occasion ABH	101
Burglary Dwelling	101
Burglary Other Building	79
<i>Source: Safer Solihull Strategic Assessment 2018</i>	

As the table below shows, the Top 10 named streets accounted for 43.9% of the Total Recorded Crime in the East Locality.

Street	Crime Count
Birmingham International Airport	285
Kenilworth Road	162
Station Road	122
National Exhibition Centre	88
Pendigo Way	78
Coventry Road	77
Stratford Road	67
Widney Road	62
Warwick Road	47
High Street	46
<i>Source: Safer Solihull Strategic Assessment 2018</i>	

The main Total Recorded Crime and Anti-Social Behaviour hotspot for East Solihull was at Birmingham Airport. There are other hotspots within Solihull East – around the Resort World complex, Station Road at Needler’s End, Balsall Common, Knowle High Street and Station Road, Dorridge.

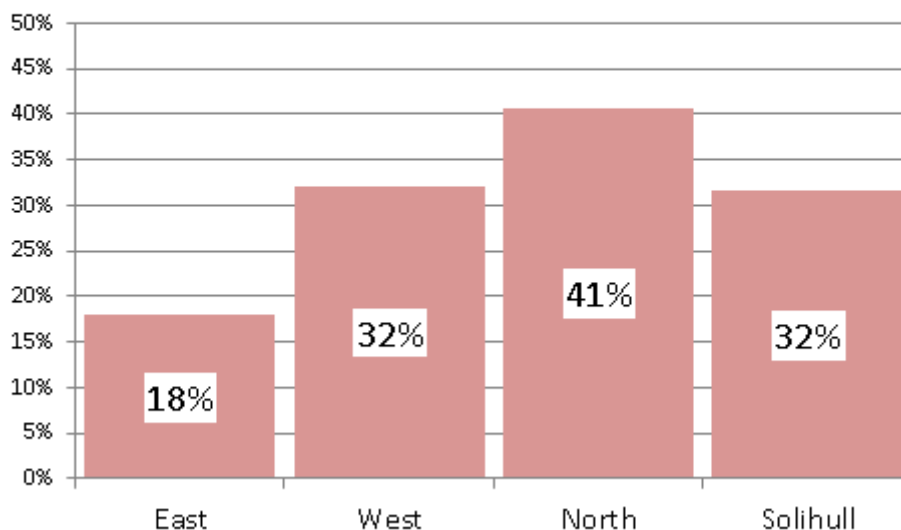


66% of East Solihull respondents to the Solihull Place Survey say that they feel safe in the local area after dark compared to 18% who feel unsafe (6% very unsafe). The proportion of those who feel unsafe is much lower than the Solihull average (32%).

	How Safe Do You Feel After Dark in Your Local Area		
	Total East	% Respondents	
		East	Solihull Average
Very safe	40	30%	17%
Fairly safe	49	37%	37%
Neither safe nor unsafe	17	13%	12%
Fairly unsafe	16	12%	19%
Very unsafe	8	6%	13%
Don't know	4	3%	3%
All Responses	134		
Total Safe	89	66%	54%
Total Unsafe	24	18%	32%

Source: SMBC Place Survey 2018

## Respondents Who Feel Unsafe in their Local Area After Dark



Source: SMBC Place Survey 2018

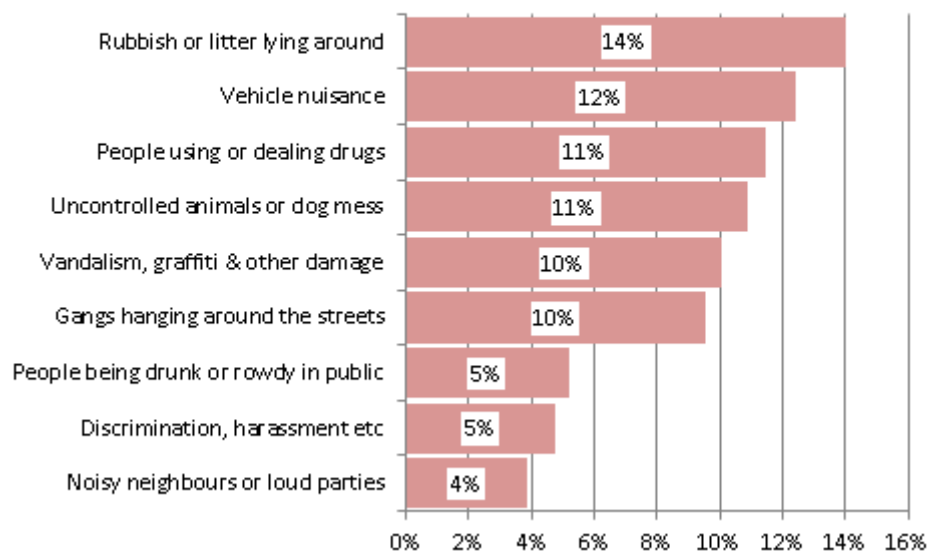
The 2018 Place Survey also asked respondents about nine specific types of ASB in the local area. For each of these issues responses from East Solihull residents were much more favourable than elsewhere in the borough.

Rubbish or litter lying around was considered a problem by 14% of East Solihull respondents, with over 10% also citing vehicle nuisance like joyriding and abandoned cars, people using or dealing drugs and uncontrolled animals or dog mess.

% Who Think That There is a Problem in Local Area		
Type of ASB	East Solihull	Solihull Average
Discrimination, harassment etc	5%	8%
Noisy neighbours or loud parties	4%	7%
Vehicle nuisance, like joyriding, abandoned cars etc	12%	32%
Gangs hanging around the streets	10%	18%
Uncontrolled animals or dog mess	11%	14%
People using or dealing drugs	11%	22%
People being drunk or rowdy in public places	5%	8%
Vandalism, graffiti and other deliberate damage to property or vehicles	10%	20%
Rubbish or litter lying around	14%	32%

Source: SMBC Place Survey 2018

## Respondents in East Solihull who think there is a problem in their local area



Source: SMBCPlace Survey 2018

## APPENDIX

### Borough Map Showing Three Locality Areas

