

Travel to Haslucks Green Junior School



Solihull School Streets Pilot

What is it?

Many schools across the Borough experience challenging traffic scenes at the beginning and end of each school day. 'School Streets' is a pilot project led by Solihull Council, which seeks to address such issues through the introduction of new restrictions that exclude traffic entering, leaving or travelling around the streets surrounding schools at key times of the day during term time – the aim being to create a predominantly car free zone. **Haslucks Green** is one of three schools that has been selected to pilot the project.

Why are we doing it?

We are aiming to create a safer, more pleasant environment and, through the scheme, will be promoting active travel to school by walking, scooting and cycling. This in turn will reduce congestion and pollution in the area.

The anticipated benefits of the scheme include:

- A reduction in congestion, pollution and traffic speed around the school gates creating a safer environment for all our children.
- An increase in walking, scooting, cycling and active lifestyles for families, within a more pleasant environment.
- Improvements in levels of childhood obesity.



We drive half way and then to be healthy and active we walk the other half. - Jack

How will it work?

The Council will be introducing an experimental Traffic Regulation Order (TRO) starting September 2017 which will be in force for a maximum period of 18 months. In the initial six months parents and residents will be invited to provide feedback. The project will be evaluated and a decision made as to whether the scheme should be made permanent, modified or revoked.

The experimental TRO will prohibit any motor vehicle without a permit or valid exemption (Blue badge holders or emergency services only) from entering or driving through the restricted zone when the scheme is in operation.

The scheme will operate on weekdays during term time only between 8.20am–9.00am and again between 2.30pm–3.30pm.

The restriction will also introduce a new 20mph speed limit for all traffic during these times.

New gateway signage will be put in place at the entrance of the restricted zones.

How will it be enforced?

The Police will have powers to enforce the new restrictions. Anyone caught driving in the restricted zone whilst it is active without a valid permit or exemption can be issued with a £50 Fixed Penalty Notice. The Police have been consulted on these proposals and are actively engaged.

Parents

From the start of the new school year in September 2017 a number of selected streets around **Haslucks Green**, highlighted on the map, will be closed to traffic in the mornings and at home time, which will create a safer, healthier and more pleasant environment for those who walk, scoot or cycle to school – and will hopefully encourage more parents to leave the car at home.

For those who live further away, we ask that they park away from the school and walk the last five or ten minutes of the journey.

The streets around the school will not be completely traffic-free as residents will have permits to drive in the area during the restricted times and there will also be an exemption for emergency vehicles and blue badge holders. There will be a new 20mph speed limit for all traffic during these times.

New gateway signage will be put in place at the entrance of the restricted zones.

Residents

If you are a resident in one of the streets affected by the restrictions then you will need to apply for a permit to allow you to drive in, out or through the area during the restricted times.

Details on how to apply for your permit can be found at: www.solihull.gov.uk/schoolstreets or by calling us on: **0121 704 8004**.

If you have a blue badge then the restriction does not apply – however a permit will be required if anyone else drives the car at other times. Remember, your badge should be prominent and displayed at all times.



'I Park and Stride because I am exercising and making less pollution.'

- Tobias

Haslucks Green Junior School

Other school activities include:

Bikeability / ModeShift STARS / Scootability
Asda are keen to promote their car park for use as alternative parking.



Map >>>



www.solihull.gov.uk/schoolstreets

Modeshift STARS is a national schools award scheme supported by the Department of Transport. Recognising schools demonstrating excellence in sustainable travel, which includes cycling and walking. To find out more about the awards visit www.modeshiftstars.org



Haslucks Green Junior School

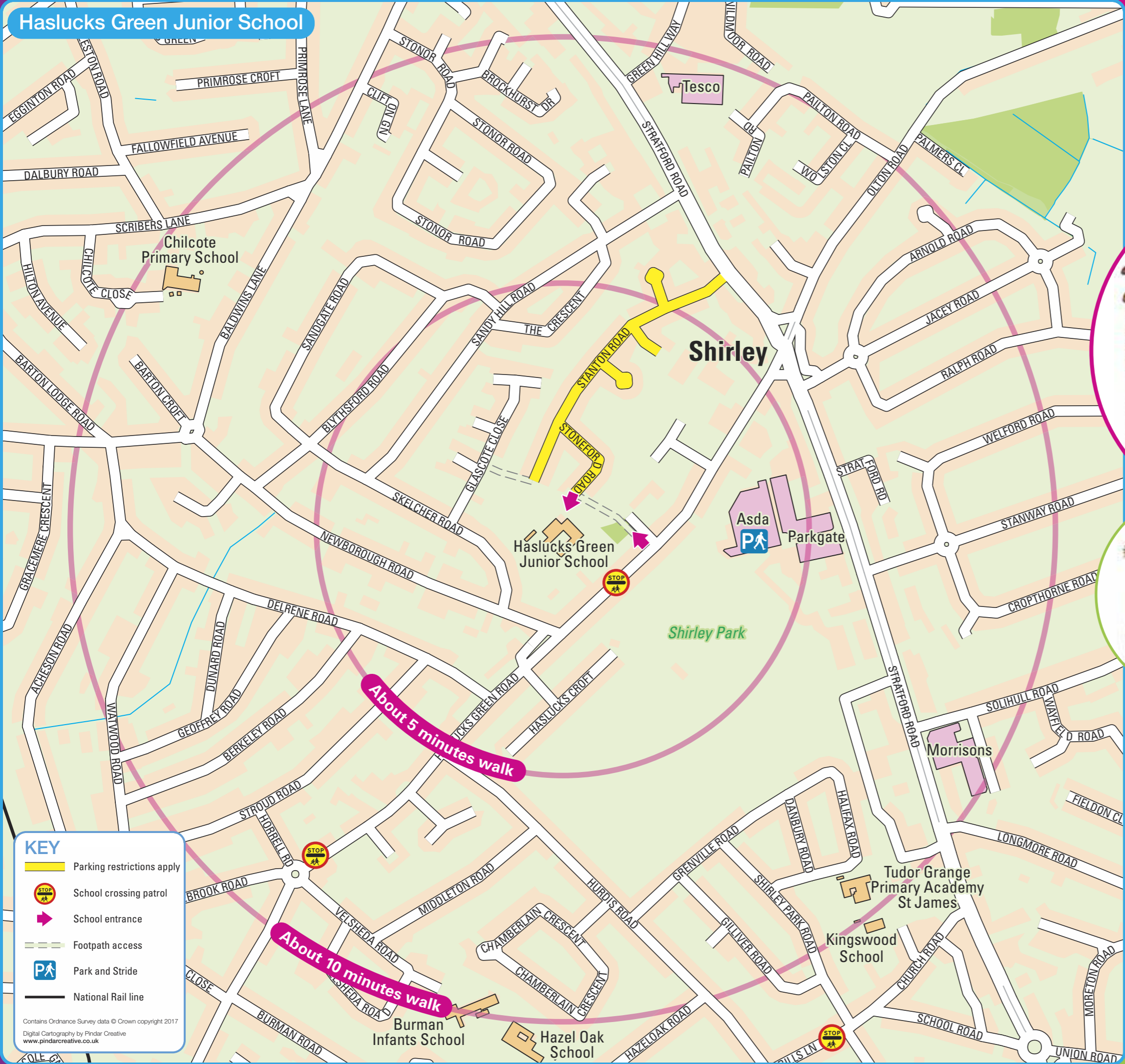
Haslucks Green Road,
Shirley,
Solihull, B90 2EJ

'I like to bike to school, because when you pedal it warms up your legs.'

- Nicky



Haslucks Green Junior School



KEY

- Parking restrictions apply
- School crossing patrol
- School entrance
- Footpath access
- Park and Stride
- National Rail line

Contains Ordnance Survey data © Crown copyright 2017
Digital Cartography by Pindar Creative
www.pindarcreative.co.uk

'I think walking is healthy because your heart pumps the blood around your body and keeps you healthy!'

- Azka



'I scoot because you get exercise and you may use some other muscles in your legs.'

- Pushka

