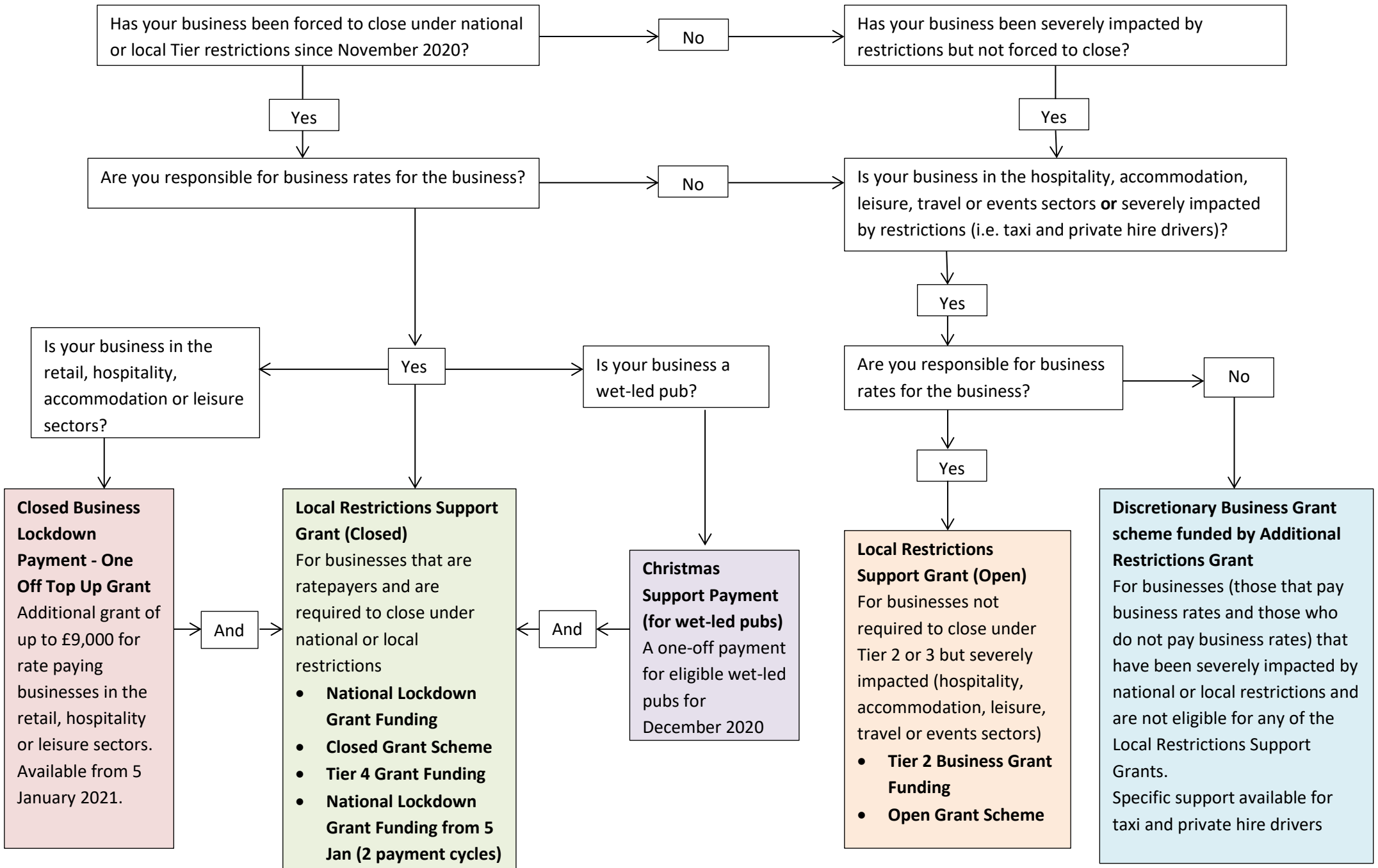


# Business Grants available for those affected by local or national restrictions since 14 October 2020



## Eligibility and application process for each grant

**Closed Business Lockdown Payment - One Off Top Up Grant**  
Additional grant of up to £9,000 for rate paying businesses in the retail, hospitality or leisure sectors

Application is not required. Eligibility will be based on a business applying and being paid a [National Lockdown Grant \(5 Nov to 2 Dec\)](#)

Amount payable:

- £4,000 where RV is £15,000 or less
- £6,000 where RV is between £15,001 to £50,999
- £9,000 where RV is £51,000 or above

**Local Restrictions Support Grant (Closed)**  
For businesses that are ratepayers and are required to close under national or local restrictions

- **National Lockdown Grant Funding (5 Nov to 2 Dec)**
- **Closed Grant Scheme**
- **Tier 4 Grant Funding**
- **National Lockdown Grant Funding from 5 Jan 2021**

Application is required for the [National Lockdown Grant \(5 Nov to 2 Dec\)](#). Once eligibility for this is confirmed all other eligible grants will automatically be processed.

Deadline for applications is **31 March 2021** for phase 1 (5 Jan – 15 Feb) and **30 April 2021** for phase 2 (16 Feb – 31 Mar)

Amount payable per 14 days (prior to 5 January):

- £667 where RV is £15,000 or less
- £1,000 where RV is between £15,001 to £50,999
- £1,500 where RV is £51,000 or above

Amount payable from 5 January:

- **£2,001** from 5 Jan – 15 Feb. **£2,096** from 16 Feb – 31 Mar, where RV is £15,000 or less
- **£3,000** from 5 Jan – 15 Feb. **£3,143** from 16 Feb – 31 Mar, where RV is between £15,001 to £50,999
- **£4,500** from 5 Jan – 15 Feb. **£4,714** from 16 Feb – 31 Mar where RV is £51,000 or above

**Christmas Support Payment (for wet-led pubs)**  
A one-off payment for eligible wet-led pubs for December 2020

Application is required for a [Christmas Support Payment](#).  
Deadline for applications **28 February 2021**

Amount payable – one off payment of **£1,000**

**Local Restrictions Support Grant (Open)**  
For businesses not required to close

- **Tier 2 Business Grant Funding** (business rate payers in hospitality, accommodation, leisure & events)
- **Open Grant Scheme** (all businesses in hospitality, accommodation, leisure, travel & events)

Application is required for the [Tier 2 Business Grant](#). A separate application is also required for the [Open Grant Scheme](#) as this is open to eligible businesses that pay business rates and those who do not pay business rates

Amount payable per 14 days:

- £467 where RV is £15,000 or less
- £700 where RV is between £15,001 to £50,999
- £1,050 where RV is £51,000 or above

**Discretionary Business Grant Scheme**

- Available to businesses not eligible for a Local Restrictions Grant so those who pay business rates and those who do not pay business rates
- Loss of trade/turnover of at least 10% caused by Covid restrictions
- Must have fixed property costs i.e. rent or business mortgage
- One off payment available to those businesses in retail, hospitality & leisure with a rateable value of over £51k
- One off payment available to taxi drivers and private hire drivers resident in Solihull

If your business received a Discretionary Business Grant in December **you do not need** to apply again. Payments will automatically be processed. If you have not applied before you will need to make an application for a [Discretionary Business Grant](#).

Eligible business in retail, hospitality & leisure with a rateable value of over £51k will have payments processed based on their successful application for a National Lockdown Grant.

Amount payable for a DBG will be based on a [‘score’](#) taking into account scale of business losses and fixed property costs:-

- £2,001 for a score of 1 to 3
- £3,000 for a score of 4
- £4,500 for a score of 6 to 9
- £25,000 One off payment for those [eligible](#) businesses with an RV over £51,000
- £1,000 One off payment for taxi/private hire drivers