

## COVID-19 – Solihull Data Summary, 11<sup>th</sup> June 2021

### Summary

- The number of new cases was 81 cases in the 7 days to 4<sup>th</sup> June, a rate of 37.4 per 100,000 population, an increase of 84% on the previous 7 days.
- Information about Covid vaccine uptake by age group and electoral ward is given in this bulletin.
- At 10<sup>th</sup> June, there were 33 Covid positive inpatients in University Hospitals Birmingham NHS Foundation Trust hospitals, compared with 27 on 2<sup>nd</sup> June.
- There were no Covid related deaths of Solihull residents in w/e 28<sup>th</sup> May (deaths registered up to 5<sup>th</sup> June). (Source: ONS).

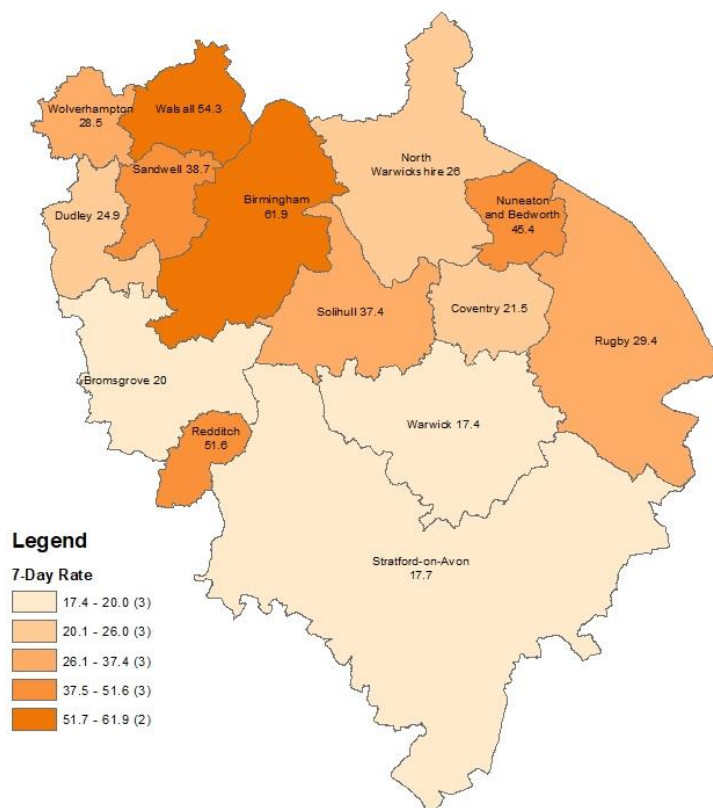
### Weekly Cases and Rates

COVID-19 cases are identified by taking specimens from people and sending them to laboratories around the UK to be tested. If the test is positive, this is referred to as a lab-confirmed case.

### New Cases

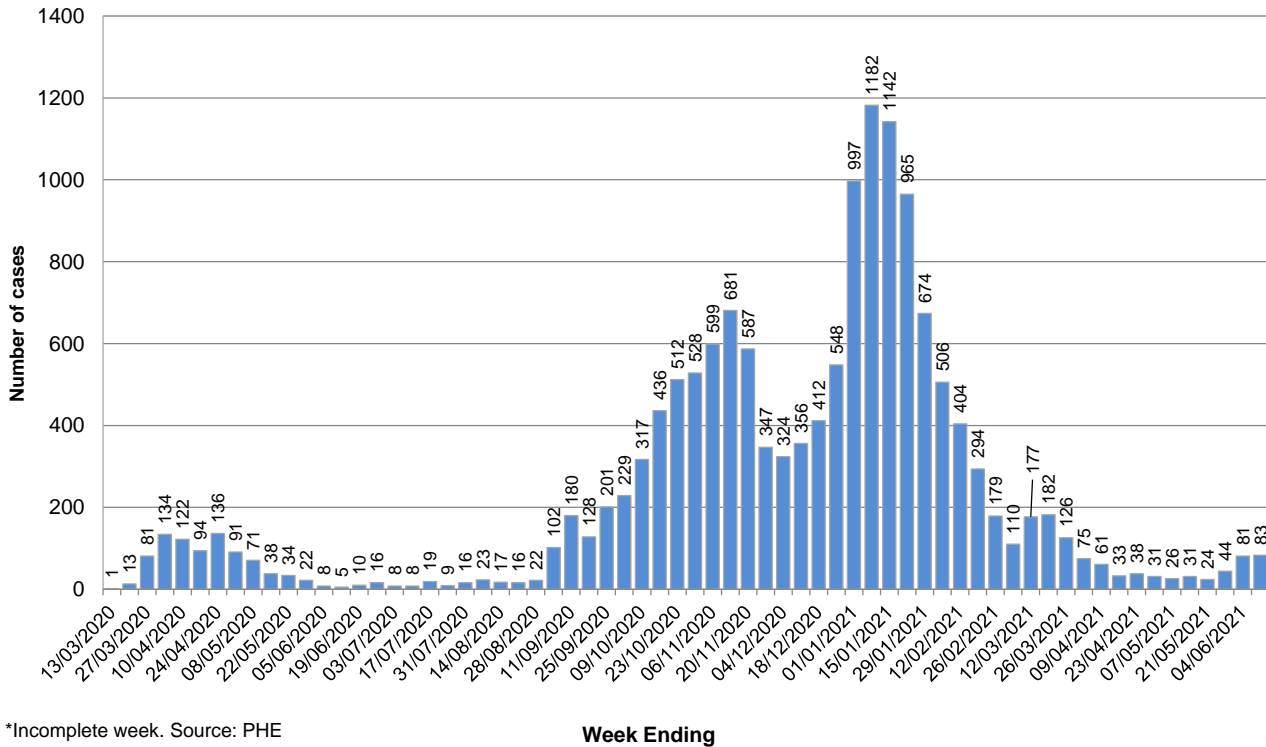
In the 7 days to 4<sup>th</sup> June, Solihull had 81 new lab-confirmed cases, a rate of 37.4 per 100,000 population. This was an increase of 84% on the previous 7 days.

Below is a map showing the 7-day rates for Solihull and neighbouring areas.



The breakdown of cases in Solihull by week over time is shown below. It should be noted that case numbers prior to May are not directly comparable as there was much more restricted access to testing.

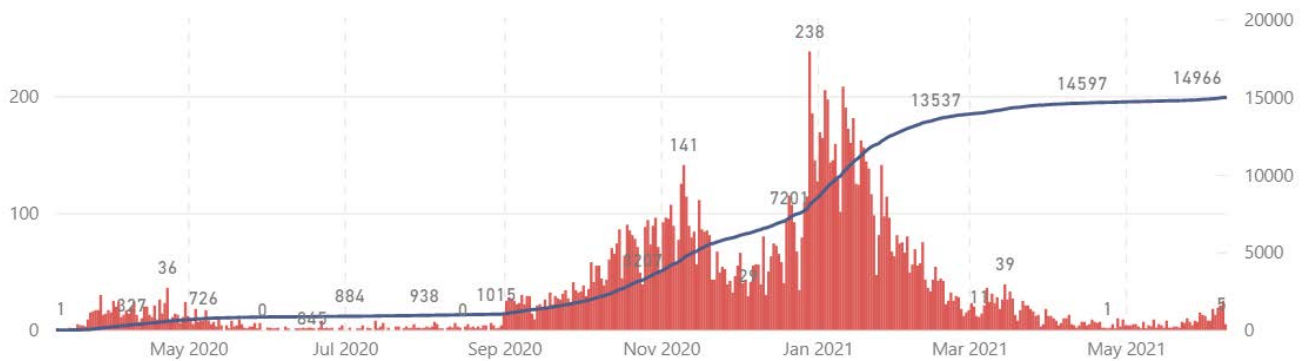
### Number of weekly Covid-19 cases in Solihull since 13 March (week ending), Total cases to date = 14966



\*Incomplete week. Source: PHE

### Total Cases

The total number of lab-confirmed cases in Solihull since the start of the pandemic was 14966 at 9<sup>th</sup> June. The cumulative number of cases over time is shown in the graph below; the full-sized version of this chart can be found at <https://coventry-city-council.github.io/covid-19/dashboard/#solihull>



### Number of New Cases by Ward

The table below shows the number of new lab-confirmed cases by ward for the 14 days between 27<sup>th</sup> May and 9<sup>th</sup> June. The number of new cases in the previous 14 days is also shown for comparison. It should be noted that, as electoral wards are relatively small areas, the wards with highest and lowest number of cases are liable to change.

Ward Name	Number of cases 13 <sup>th</sup> May – 26 <sup>th</sup> May	Number of cases 27 <sup>th</sup> May – 9 <sup>th</sup> June
Bickenhill	5	17
Blythe	*	12
Castle Bromwich	4	6
Chelmsley Wood	4	4
Dorridge & Hockley Heath	*	6
Elmdon	*	19
Knowle	6	8
Kingshurst & Fordbridge	*	6
Lyndon	6	9
Meriden	*	11
Olton	6	26
Silhill	*	13
Shirley East	6	9
Shirley South	*	11
Shirley West	*	8
St Alphege	5	14
Smith's Wood	4	4
<b>Total</b>	<b>65</b>	<b>183</b>

Source: Public Health England Data, lab confirmed cases

\*To avoid the possibility of identifying individuals, the exact number of cases is not given where there have been 3 cases or less in a ward over the past 14 days.

### Reproduction Number (Rt)

The reproduction number is the number of people that one infected person will pass on a virus to, on average. If the reproduction number is higher than one, then the number of cases increase exponentially. If the number is lower the disease will eventually stop spreading, as not enough new people are being infected to sustain the outbreak. The current reproduction number (Rt) for the Midlands region can be found at <https://www.gov.uk/guidance/the-r-number-in-the-uk>.

## Vaccinations

The table below shows uptake of the first dose of the Covid-19 vaccine by age group and electoral ward at 7<sup>th</sup> June. Data is on Birmingham and Solihull CCG registered patients who are resident within Solihull.

Ward Name	Age 70+		Age 60-69		Age 50-59		Age 40-49		Age 30-39		Age 20-29		Age Under 20	
	Vaccinations	Coverage	Vaccinations	Coverage	Vaccinations	Coverage	Vaccinations	Coverage	Vaccinations	Coverage	Vaccinations	Coverage	Vaccinations	Coverage
Bickenhill	1,299	96.6%	1,326	93.2%	1,856	89.6%	1,363	81.2%	1,047	60.6%	502	32.1%	62	19.7%
Dorridge and Hockley Heath	1,211	98.0%	1,299	95.7%	1,686	94.4%	1,405	88.3%	700	65.0%	278	25.8%	78	25.9%
Knowle	1,468	97.5%	1,367	95.7%	1,480	92.8%	1,290	88.5%	675	66.4%	212	23.3%	47	20.3%
Meriden	1,502	97.9%	1,545	96.1%	1,912	93.3%	1,460	86.6%	710	57.5%	290	24.1%	65	21.0%
Castle Bromwich	1,294	96.6%	1,489	94.2%	1,646	90.1%	1,044	83.3%	918	63.0%	476	36.7%	55	21.8%
Chelmsley Wood	1,122	94.8%	1,076	91.6%	1,643	85.2%	1,137	73.4%	1,183	55.3%	589	31.7%	69	18.6%
Kingshurst and Fordbridge	910	94.7%	1,068	90.8%	1,646	86.4%	1,171	72.0%	1,158	53.7%	541	28.6%	66	18.0%
Smith's Wood	979	95.5%	1,040	92.0%	1,499	84.1%	1,225	76.1%	1,121	54.6%	578	31.3%	60	17.0%
Blythe	1,245	96.3%	1,425	93.4%	1,877	88.5%	1,795	83.4%	1,434	64.6%	412	25.8%	66	21.0%
Elmdon	1,216	95.9%	1,332	93.9%	1,640	89.7%	1,240	78.6%	1,074	60.8%	430	30.3%	49	17.8%
Lyndon	1,112	96.0%	1,375	92.3%	1,744	87.1%	1,411	78.3%	1,143	56.1%	375	22.4%	72	21.2%
Olton	1,294	95.3%	1,513	94.3%	1,833	90.2%	1,305	81.1%	940	60.5%	413	29.0%	65	19.7%
St Alphege	1,409	96.0%	1,728	93.8%	1,993	89.5%	1,499	82.5%	837	62.6%	373	28.0%	88	26.8%
Shirley East	1,014	95.2%	1,179	93.1%	1,616	90.2%	1,523	83.8%	988	62.7%	343	27.8%	73	25.3%
Shirley South	1,320	95.5%	1,423	92.7%	1,625	90.5%	1,432	80.0%	1,084	65.3%	327	25.3%	59	21.6%
Shirley West	1,126	96.1%	1,346	93.5%	1,617	89.3%	1,399	82.0%	1,295	65.0%	385	26.1%	54	20.1%
Silhill	1,267	95.3%	1,267	93.5%	1,579	89.1%	1,441	76.0%	1,097	57.7%	347	25.5%	63	22.5%
<b>Total</b>	<b>20,788</b>	<b>96.1%</b>	<b>22,798</b>	<b>93.6%</b>	<b>28,892</b>	<b>89.4%</b>	<b>23,140</b>	<b>80.8%</b>	<b>17,404</b>	<b>60.2%</b>	<b>6,871</b>	<b>28.1%</b>	<b>1,091</b>	<b>21.0%</b>

The following table shows uptake of the second dose of Covid-19 vaccine by electoral ward and age group.

Increasing uptake in areas where fewer people have been vaccinated is a key local priority and area of focus for the local NHS & council, working with local communities. You can check if you are currently eligible for a vaccine and book an appointment at the following website: <https://www.nhs.uk/conditions/coronavirus-covid-19/coronavirus-vaccination/book-coronavirus-vaccination/>

Ward Name	Age 70+		Age 60-69		Age 50-59		Age 40-49		Age 30-39		Age 20-29		Age Under 20	
	Vaccinations	Coverage	Vaccinations	Coverage	Vaccinations	Coverage	Vaccinations	Coverage	Vaccinations	Coverage	Vaccinations	Coverage	Vaccinations	Coverage
Bickenhill	1,282	95.3%	1,267	89.0%	1,468	70.9%	558	33.2%	364	21.1%	270	17.3%	35	11.1%
Dorridge and Hockley Heath	1,209	97.8%	1,268	93.4%	1,531	85.7%	580	36.4%	222	20.6%	166	15.4%	50	16.6%
Knowle	1,459	96.9%	1,339	93.8%	1,317	82.6%	528	36.2%	208	20.5%	130	14.3%	26	11.2%
Meriden	1,485	96.7%	1,513	94.1%	1,630	79.5%	540	32.0%	269	21.8%	185	15.4%	40	12.9%
Castle Bromwich	1,286	96.0%	1,443	91.3%	1,291	70.7%	423	33.8%	334	22.9%	212	16.3%	26	10.3%
Chelmsley Wood	1,098	92.7%	1,007	85.7%	1,316	68.3%	489	31.6%	411	19.2%	226	12.2%	47	12.7%
Kingshurst and Fordbridge	894	93.0%	1,015	86.3%	1,291	67.8%	536	32.9%	423	19.6%	246	13.0%	36	9.8%
Smith's Wood	965	94.1%	982	86.9%	1,157	64.9%	519	32.2%	425	20.7%	257	13.9%	21	5.9%
Blythe	1,231	95.2%	1,379	90.4%	1,591	75.0%	676	31.4%	439	19.8%	267	16.7%	27	8.6%
Elmdon	1,193	94.1%	1,272	89.7%	1,347	73.7%	579	36.7%	357	20.2%	244	17.2%	21	7.6%
Lyndon	1,091	94.2%	1,306	87.7%	1,460	72.9%	676	37.5%	399	19.6%	212	12.7%	39	11.5%
Olton	1,281	94.3%	1,460	91.0%	1,497	73.6%	557	34.6%	336	21.6%	253	17.8%	26	7.9%
St Alphege	1,396	95.2%	1,682	91.3%	1,741	78.2%	561	30.9%	266	19.9%	232	17.4%	49	14.9%
Shirley East	998	93.7%	1,127	89.0%	1,323	73.8%	671	36.9%	327	20.8%	205	16.6%	42	14.5%
Shirley South	1,307	94.6%	1,374	89.5%	1,362	75.9%	565	31.6%	376	22.7%	208	16.1%	39	14.3%
Shirley West	1,103	94.1%	1,282	89.0%	1,279	70.7%	591	34.6%	424	21.3%	223	15.1%	20	7.5%
Silhill	1,254	94.4%	1,215	89.7%	1,328	74.9%	615	32.4%	371	19.5%	221	16.2%	32	11.4%
<b>Total</b>	<b>20,532</b>	<b>95.0%</b>	<b>21,931</b>	<b>90.0%</b>	<b>23,929</b>	<b>74.0%</b>	<b>9,664</b>	<b>33.8%</b>	<b>5,951</b>	<b>20.6%</b>	<b>3,757</b>	<b>15.4%</b>	<b>576</b>	<b>11.1%</b>

## Hospital Inpatients

At 10<sup>th</sup> June, there were 33 Covid positive inpatients in University Hospitals Birmingham NHS Foundation Trust hospitals, compared with 27 to 2<sup>nd</sup> June. This includes 6 in Intensive Treatment / High Dependency Units, compared with 2 on 2<sup>nd</sup> June. This will include a number of Solihull residents although the majority will be Birmingham residents (source: UHB Inpatient reports, 2<sup>nd</sup> June and 10<sup>th</sup> June).

University Hospitals Birmingham NHS Foundation Trust publish information several times a week at:  
<https://www.uhb.nhs.uk/coronavirus-staff/daily-statistics.htm>

## Weekly Death Registrations and Occurrences (latest data published covers deaths occurred up to 28<sup>th</sup> May and registered up to 5<sup>th</sup> June 2021)

As of the week ending 28<sup>th</sup> May, there have been 650 deaths of Solihull residents that mention COVID-19. No COVID-19 deaths occurred in the latest week.

Further information is available on the Office for National Statistics death registrations page.

## Further Information

<https://coventry-city-council.github.io/covid-19/dashboard/>

This dashboard, developed by Coventry City Council as part of the Local Outbreak Management beacon with Warwickshire and Solihull, contains a variety of useful information and allows users to compare rates in Solihull with other areas.

The next data summary will be published on Friday 18<sup>th</sup> June.

11<sup>th</sup> June 2021