

COVID-19 – Solihull Data Summary, 18th June 2021

Summary

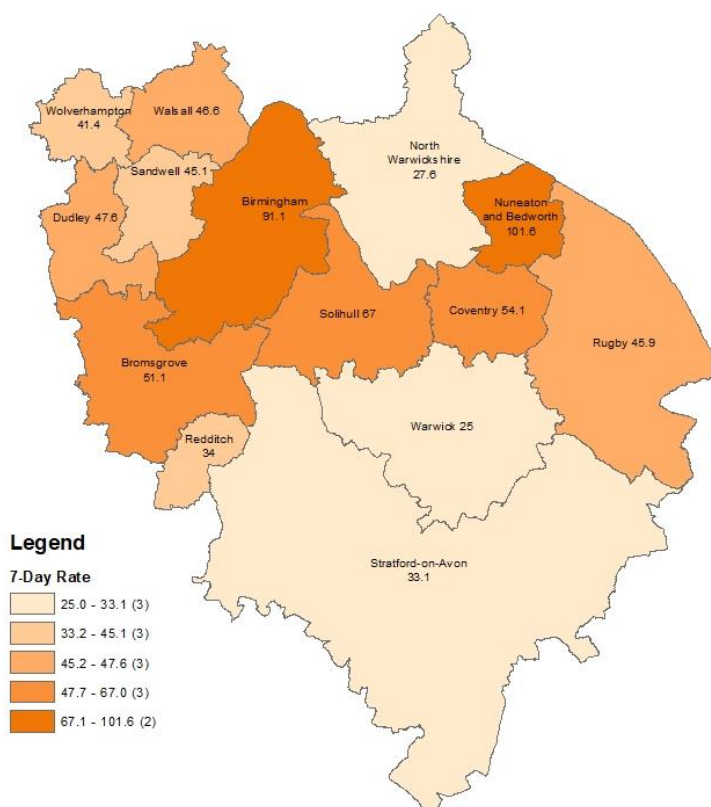
- The number of new cases was 145 cases in the 7 days to 11th June, a rate of 67.0 per 100,000 population, an increase of 79% on the previous 7 days.
- Information about Covid vaccine uptake by age group and electoral ward is given in this bulletin.
- At 17th June, there were 33 Covid positive inpatients in University Hospitals Birmingham NHS Foundation Trust hospitals, compared with 27 on 2nd June.
- There were no Covid related deaths of Solihull residents in w/e 4th June (deaths registered up to 12th June). (Source: ONS).

Weekly Cases and Rates

COVID-19 cases are identified by taking specimens from people and sending them to laboratories around the UK to be tested. If the test is positive, this is referred to as a lab-confirmed case.

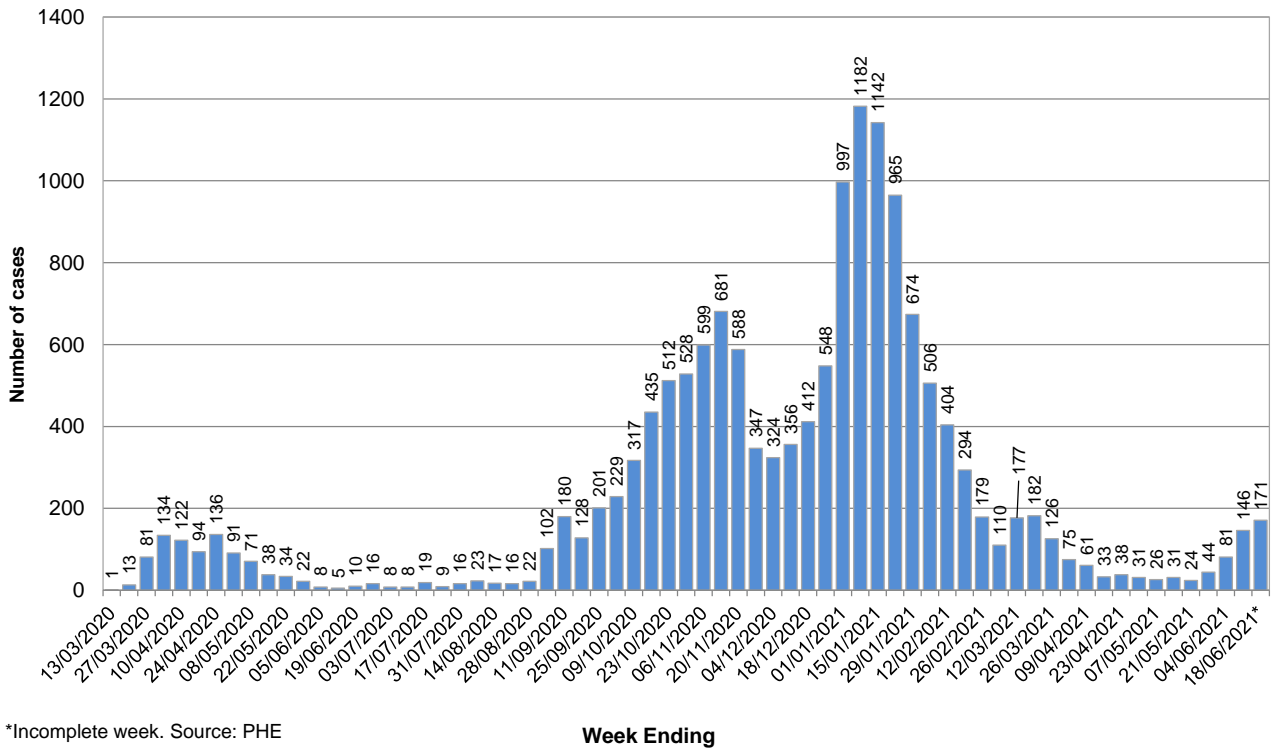
New Cases

In the 7 days to 11th June, Solihull had 145 new lab-confirmed cases, a rate of 67.0 per 100,000 population. This was an increase of 79% on the previous 7 days.



The breakdown of cases in Solihull by week over time is shown below. It should be noted that case numbers prior to May are not directly comparable as there was much more restricted access to testing.

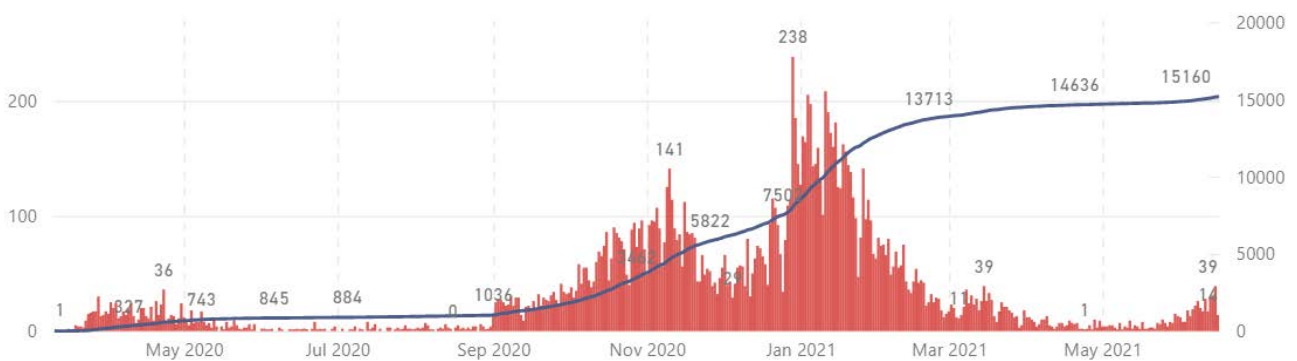
Number of weekly Covid-19 cases in Solihull since 13 March (week ending), Total cases to date = 15200



*Incomplete week. Source: PHE

Total Cases

The total number of lab-confirmed cases in Solihull since the start of the pandemic was 15160 at 16th June. The cumulative number of cases over time is shown in the graph below; the full-sized version of this chart can be found at <https://coventry-city-council.github.io/covid-19/dashboard/#solihull>



Number of New Cases by Ward

The table below shows the number of new lab-confirmed cases by ward for the 14 days between 3rd June and 16th June. The number of new cases in the previous 14 days is also shown for comparison. It should be noted that, as electoral wards are relatively small areas, the wards with highest and lowest number of cases are liable to change.

Ward Name	Number of cases 20 th May – 2 nd June	Number of cases 3 rd June – 16 th June
Bickenhill	5	27
Blythe	6	15
Castle Bromwich	*	15
Chelmsley Wood	*	9
Dorridge & Hockley Heath	5	13
Elmdon	12	32
Knowle	7	17
Kingshurst & Fordbridge	5	17
Lyndon	7	20
Meriden	4	17
Olton	10	27
Silhill	*	22
Shirley East	6	14
Shirley South	7	15
Shirley West	6	12
St Alphege	7	27
Smith's Wood	4	10
Total	99	309

Source: Public Health England Data, lab confirmed cases

*To avoid the possibility of identifying individuals, the exact number of cases is not given where there have been 3 cases or less in a ward over the past 14 days.

Reproduction Number (Rt)

The reproduction number is the number of people that one infected person will pass on a virus to, on average. If the reproduction number is higher than one, then the number of cases increase exponentially. If the number is lower the disease will eventually stop spreading, as not enough new people are being infected to sustain the outbreak. The current reproduction number (Rt) for the Midlands region can be found at <https://www.gov.uk/guidance/the-r-number-in-the-uk>.

Vaccinations

The table below shows uptake of the first dose of the Covid-19 vaccine by age group and electoral ward at 14th June. Data is on Birmingham and Solihull CCG registered patients who are resident within Solihull.

Ward Name	Age 70+		Age 60-69		Age 50-59		Age 40-49		Age 30-39		Age 20-29		Age Under 20	
	Vaccinations	Coverage	Vaccinations	Coverage	Vaccinations	Coverage	Vaccinations	Coverage	Vaccinations	Coverage	Vaccinations	Coverage	Vaccinations	Coverage
Bickenhill	1,298	96.5%	1,326	93.2%	1,860	89.7%	1,369	81.9%	1,095	63.3%	537	34.3%	65	20.9%
Dorridge and Hockley Heath	1,212	98.0%	1,296	95.9%	1,686	94.5%	1,408	89.0%	784	72.6%	363	33.8%	79	26.4%
Knowle	1,466	97.7%	1,366	95.9%	1,486	93.1%	1,308	89.5%	738	72.4%	275	30.5%	48	20.9%
Meriden	1,499	97.8%	1,545	96.0%	1,916	93.5%	1,476	87.2%	824	67.3%	329	27.4%	64	21.1%
Castle Bromwich	1,292	96.6%	1,489	94.2%	1,646	90.1%	1,048	83.8%	960	65.7%	514	39.5%	58	23.1%
Chelmsley Wood	1,119	94.7%	1,078	91.7%	1,644	85.4%	1,142	73.8%	1,216	57.0%	603	32.4%	67	18.4%
Kingshurst and Fordbridge	911	94.7%	1,069	90.9%	1,643	86.5%	1,176	72.4%	1,207	55.7%	573	30.4%	68	18.6%
Smith's Wood	981	95.7%	1,040	92.0%	1,504	84.2%	1,234	76.5%	1,150	56.0%	606	32.7%	60	17.1%
Blythe	1,244	96.2%	1,423	93.3%	1,881	88.8%	1,804	83.8%	1,523	68.7%	545	34.1%	65	21.1%
Elmdon	1,213	95.9%	1,340	94.0%	1,642	90.0%	1,262	79.9%	1,147	65.2%	508	35.6%	51	18.6%
Lyndon	1,114	96.2%	1,378	92.5%	1,752	87.5%	1,424	79.3%	1,243	61.2%	458	27.3%	73	21.7%
Olton	1,292	95.1%	1,509	94.3%	1,834	90.4%	1,313	81.9%	1,020	65.3%	519	36.4%	70	21.3%
St Alphege	1,415	96.3%	1,729	93.8%	1,994	89.6%	1,506	82.7%	893	67.1%	448	33.7%	90	27.8%
Shirley East	1,020	95.3%	1,181	93.1%	1,623	90.3%	1,521	83.9%	1,062	67.7%	400	32.4%	77	26.6%
Shirley South	1,321	95.5%	1,429	92.8%	1,623	90.7%	1,443	80.4%	1,153	69.8%	401	30.9%	60	22.1%
Shirley West	1,126	96.3%	1,346	93.6%	1,619	89.4%	1,411	82.7%	1,385	69.5%	490	33.1%	53	19.9%
Silhill	1,267	95.3%	1,267	93.6%	1,585	89.3%	1,449	76.4%	1,168	61.5%	448	33.0%	65	23.5%
Total	20,790	96.2%	22,811	93.7%	28,938	89.6%	23,294	81.4%	18,568	64.3%	8,017	32.8%	1,113	21.6%

The following table shows uptake of the second dose of Covid-19 vaccine by electoral ward and age group.

Increasing uptake in areas where fewer people have been vaccinated is a key local priority and area of focus for the local NHS & council, working with local communities. You can check if you are currently eligible for a vaccine and book an appointment at the following website: <https://www.nhs.uk/conditions/coronavirus-covid-19/coronavirus-vaccination/book-coronavirus-vaccination/>

Ward Name	Age 70+		Age 60-69		Age 50-59		Age 40-49		Age 30-39		Age 20-29		Age Under 20	
	Vaccinations	Coverage	Vaccinations	Coverage	Vaccinations	Coverage	Vaccinations	Coverage	Vaccinations	Coverage	Vaccinations	Coverage	Vaccinations	Coverage
Bickenhill	1,281	95.2%	1,289	90.6%	1,750	84.4%	787	47.1%	417	24.1%	318	20.3%	41	13.2%
Dorridge and Hockley Heath	1,213	98.1%	1,272	94.2%	1,626	91.1%	711	44.9%	246	22.8%	189	17.6%	49	16.4%
Knowle	1,457	97.1%	1,342	94.2%	1,413	88.5%	683	46.7%	226	22.2%	142	15.7%	27	11.7%
Meriden	1,484	96.9%	1,518	94.3%	1,811	88.3%	791	46.7%	310	25.3%	216	18.0%	47	15.5%
Castle Bromwich	1,286	96.1%	1,473	93.2%	1,560	85.4%	699	55.9%	387	26.5%	272	20.9%	36	14.3%
Chelmsley Wood	1,097	92.8%	1,037	88.2%	1,505	78.2%	780	50.4%	506	23.7%	276	14.8%	48	13.2%
Kingshurst and Fordbridge	899	93.5%	1,027	87.3%	1,502	79.1%	768	47.3%	495	22.9%	300	15.9%	45	12.3%
Smith's Wood	970	94.6%	1,002	88.7%	1,366	76.5%	827	51.2%	487	23.7%	319	17.2%	29	8.3%
Blythe	1,234	95.4%	1,398	91.7%	1,745	82.4%	817	37.9%	482	21.7%	292	18.3%	30	9.7%
Elmdon	1,190	94.1%	1,301	91.3%	1,496	82.0%	713	45.1%	392	22.3%	266	18.7%	26	9.5%
Lyndon	1,095	94.6%	1,319	88.5%	1,594	79.6%	791	44.0%	442	21.8%	242	14.4%	44	13.1%
Olton	1,281	94.3%	1,471	91.9%	1,670	82.3%	729	45.4%	366	23.4%	280	19.7%	30	9.1%
St Alphege	1,402	95.4%	1,702	92.3%	1,872	84.1%	702	38.6%	285	21.4%	258	19.4%	51	15.7%
Shirley East	1,006	94.0%	1,148	90.5%	1,470	81.8%	799	44.1%	354	22.6%	221	17.9%	43	14.9%
Shirley South	1,310	94.7%	1,400	90.9%	1,484	82.9%	673	37.5%	400	24.2%	230	17.7%	40	14.7%
Shirley West	1,104	94.4%	1,296	90.1%	1,426	78.8%	689	40.4%	494	24.8%	257	17.4%	28	10.5%
Silhill	1,257	94.6%	1,231	91.0%	1,450	81.7%	718	37.8%	403	21.2%	244	18.0%	34	12.3%
Total	20,566	95.1%	22,226	91.3%	26,740	82.8%	12,677	44.3%	6,692	23.2%	4,322	17.7%	648	12.6%

Hospital Inpatients

At 17th June, there were 50 Covid positive inpatients in University Hospitals Birmingham NHS Foundation Trust hospitals, compared with 33 to 9th June. This includes 8 in Intensive Treatment / High Dependency Units, compared with 6 on 9th June. This will include a number of Solihull residents although the majority will be Birmingham residents (source: UHB Inpatient reports, 9th June and 17th June).

University Hospitals Birmingham NHS Foundation Trust publish information several times a week at:
<https://www.uhb.nhs.uk/coronavirus-staff/daily-statistics.htm>

Weekly Death Registrations and Occurrences (latest data published covers deaths occurred up to 4th June and registered up to 12th June 2021)

As of the week ending 4th June, there have been 650 deaths of Solihull residents that mention COVID-19. No COVID-19 deaths occurred in the latest week.

Further information is available on the Office for National Statistics death registrations page.

Further Information

<https://coventry-city-council.github.io/covid-19/dashboard/>

This dashboard, developed by Coventry City Council as part of the Local Outbreak Management beacon with Warwickshire and Solihull, contains a variety of useful information and allows users to compare rates in Solihull with other areas.

The next data summary will be published on Friday 25th June.

18th June 2021