

COVID-19 – Solihull Data Summary, 2nd July 2021

Summary

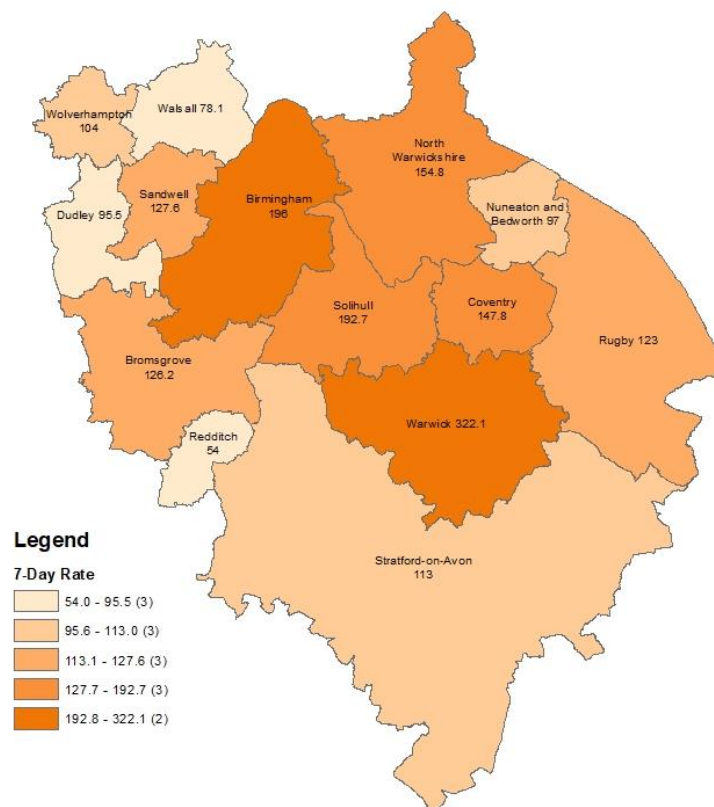
- The number of new cases was 417 in the 7 days to 25th June, a rate of 192.7 per 100,000 population, an increase of 81.3% on the previous 7 days.
- Information about Covid vaccine uptake by age group and electoral ward is given in this bulletin.
- At 1st July, there were 51 Covid positive inpatients in University Hospitals Birmingham NHS Foundation Trust hospitals, compared with 51 on 24th June.
- There were no Covid related deaths of Solihull residents in w/e 18th June (deaths registered up to 26th June). (Source: ONS).

Weekly Cases and Rates

COVID-19 cases are identified by taking specimens from people and sending them to laboratories around the UK to be tested. If the test is positive, this is referred to as a lab-confirmed case.

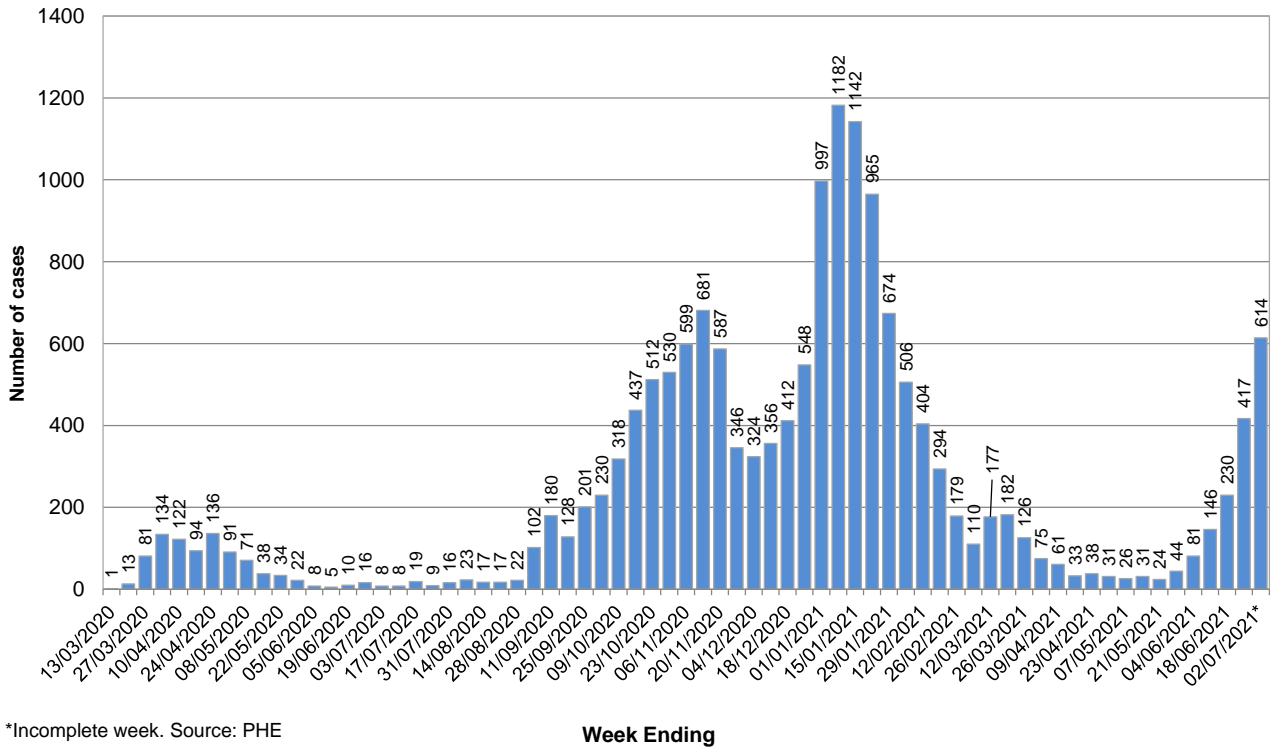
New Cases

In the 7 days to 25th June, Solihull had 417 new lab-confirmed cases, a rate of 192.7 per 100,000 population. This was an increase of 81.3% on the previous 7 days.



The breakdown of cases in Solihull by week over time is shown below. It should be noted that case numbers prior to May are not directly comparable as there was much more restricted access to testing.

Number of weekly Covid-19 cases in Solihull since 13 March (week ending), Total cases to date = 16295



*Incomplete week. Source: PHE

Total Cases

The total number of lab-confirmed cases in Solihull since the start of the pandemic was 16148 at 30th June. The cumulative number of cases over time is shown in the graph below; the full-sized version of this chart can be found at <https://coventry-city-council.github.io/covid-19/dashboard/#solihull>



Number of New Cases by Ward

The table below shows the number of new lab-confirmed cases by ward for the 14 days between 17th June and 30th June. The number of new cases in the previous 14 days is also shown for comparison. It should be noted that, as electoral wards are relatively small areas, the wards with highest and lowest number of cases are liable to change.

Ward Name	Number of cases 3 rd June– 16 th June	Number of cases 17 th June – 30 th June
Bickenhill	27	48
Blythe	15	85
Castle Bromwich	15	59
Chelmsley Wood	9	60
Dorridge & Hockley Heath	13	59
Elmdon	32	61
Knowle	17	52
Kingshurst & Fordbridge	17	64
Lyndon	20	65
Meriden	17	19
Olton	27	69
Silhill	22	57
Shirley East	14	58
Shirley South	15	41
Shirley West	12	38
St Alphege	27	81
Smith's Wood	10	75
Total	309	991

Source: Public Health England Data, lab confirmed cases

*To avoid the possibility of identifying individuals, the exact number of cases is not given where there have been 3 cases or less in a ward over the past 14 days.

Reproduction Number (Rt)

The reproduction number is the number of people that one infected person will pass on a virus to, on average. If the reproduction number is higher than one, then the number of cases increase exponentially. If the number is lower the disease will eventually stop spreading, as not enough new people are being infected to sustain the outbreak. The current reproduction number (Rt) for the Midlands region can be found at <https://www.gov.uk/guidance/the-r-number-in-the-uk>.

Vaccinations

The table below shows uptake of the first dose of the Covid-19 vaccine by age group and electoral ward at 29th June. Data is on Birmingham and Solihull CCG registered patients who are resident within Solihull.

Ward Name	Age 70+		Age 60-69		Age 50-59		Age 40-49		Age 30-39		Age 20-29		Age Under 20	
	Vaccinations	Coverage	Vaccinations	Coverage	Vaccinations	Coverage	Vaccinations	Coverage	Vaccinations	Coverage	Vaccinations	Coverage	Vaccinations	Coverage
Bickenhill	1,293	96.5%	1,337	93.7%	1,866	90.3%	1,375	82.3%	1,170	67.9%	835	53.4%	158	51.5%
Dorridge and Hockley Heath	1,216	98.1%	1,296	96.1%	1,683	94.7%	1,421	89.4%	829	77.0%	669	62.3%	170	57.8%
Knowle	1,467	97.7%	1,361	95.9%	1,484	93.5%	1,312	90.0%	779	76.9%	531	58.5%	122	53.5%
Meriden	1,502	98.0%	1,546	96.0%	1,919	93.7%	1,493	88.1%	934	76.4%	754	62.5%	146	48.7%
Castle Bromwich	1,287	96.6%	1,499	94.3%	1,642	90.4%	1,056	84.7%	1,004	68.3%	732	56.4%	120	49.8%
Chelmsley Wood	1,116	94.6%	1,088	92.0%	1,651	85.9%	1,159	74.8%	1,272	59.8%	872	46.6%	151	41.8%
Kingshurst and Fordbridge	915	94.9%	1,071	91.0%	1,651	87.0%	1,202	73.8%	1,279	58.8%	858	45.7%	151	41.8%
Smith's Wood	980	95.7%	1,040	92.2%	1,513	84.4%	1,248	77.9%	1,205	58.6%	898	48.6%	134	38.3%
Blythe	1,250	96.2%	1,425	93.4%	1,887	89.1%	1,820	84.7%	1,600	72.0%	957	59.2%	132	43.6%
Elmdon	1,214	96.0%	1,345	94.2%	1,651	90.3%	1,278	80.9%	1,220	69.0%	797	56.0%	113	41.1%
Lyndon	1,114	96.3%	1,388	93.0%	1,756	88.0%	1,459	81.6%	1,367	67.2%	809	48.2%	151	45.8%
Olton	1,296	95.2%	1,506	94.5%	1,836	90.5%	1,332	83.3%	1,104	70.1%	862	60.2%	153	46.6%
St Alphege	1,418	96.1%	1,732	93.9%	1,995	89.7%	1,511	83.0%	940	70.6%	802	59.9%	169	52.2%
Shirley East	1,023	95.4%	1,186	93.0%	1,633	90.8%	1,545	84.9%	1,117	71.4%	683	55.1%	149	51.6%
Shirley South	1,323	95.6%	1,431	92.8%	1,631	90.9%	1,472	81.6%	1,208	72.9%	723	55.5%	129	46.6%
Shirley West	1,124	96.2%	1,359	94.0%	1,620	89.6%	1,426	83.8%	1,459	73.1%	854	57.6%	117	44.3%
Silhill	1,265	95.3%	1,274	93.7%	1,587	89.5%	1,476	78.0%	1,229	64.7%	782	57.8%	141	50.5%
Total	20,803	96.2%	22,884	93.8%	29,005	89.9%	23,585	82.5%	19,716	68.2%	13,418	54.7%	2,406	47.1%

The following table shows uptake of the second dose of Covid-19 vaccine by electoral ward and age group.

Ward Name	Age 70+		Age 60-69		Age 50-59		Age 40-49		Age 30-39		Age 20-29		Age Under 20	
	Vaccinations	Coverage	Vaccinations	Coverage	Vaccinations	Coverage	Vaccinations	Coverage	Vaccinations	Coverage	Vaccinations	Coverage	Vaccinations	Coverage
Bickenhill	1,284	95.8%	1,310	91.8%	1,809	87.5%	1,050	62.8%	557	32.3%	376	24.0%	46	15.0%
Dorridge and Hockley Heath	1,217	98.2%	1,276	94.7%	1,655	93.1%	965	60.7%	296	27.5%	219	20.4%	57	19.4%
Knowle	1,459	97.2%	1,346	94.9%	1,445	91.1%	907	62.3%	265	26.2%	156	17.2%	32	14.0%
Meriden	1,486	97.0%	1,528	94.9%	1,879	91.7%	1,037	61.2%	347	28.4%	244	20.2%	53	17.7%
Castle Bromwich	1,282	96.2%	1,484	93.3%	1,597	87.9%	899	72.1%	538	36.6%	328	25.3%	42	17.4%
Chelmsley Wood	1,103	93.5%	1,058	89.4%	1,552	80.7%	938	60.6%	708	33.3%	369	19.7%	53	14.7%
Kingshurst and Fordbridge	902	93.6%	1,043	88.6%	1,557	82.1%	956	58.7%	677	31.1%	376	20.0%	49	13.6%
Smith's Wood	974	95.1%	1,009	89.5%	1,433	80.0%	1,021	63.7%	642	31.2%	399	21.6%	38	10.9%
Blythe	1,242	95.5%	1,404	92.1%	1,824	86.1%	1,276	59.4%	585	26.3%	339	21.0%	38	12.5%
Elmdon	1,193	94.4%	1,329	93.1%	1,591	87.0%	961	60.8%	586	33.1%	334	23.5%	29	10.5%
Lyndon	1,095	94.6%	1,355	90.8%	1,696	85.0%	1,136	63.5%	733	36.1%	302	18.0%	55	16.7%
Olton	1,287	94.5%	1,486	93.2%	1,768	87.1%	1,010	63.1%	467	29.7%	311	21.7%	34	10.4%
St Alphege	1,408	95.5%	1,713	92.8%	1,947	87.6%	1,101	60.5%	330	24.8%	292	21.8%	60	18.5%
Shirley East	1,015	94.7%	1,162	91.1%	1,566	87.1%	1,124	61.8%	455	29.1%	258	20.8%	48	16.6%
Shirley South	1,313	94.9%	1,416	91.8%	1,555	86.6%	1,005	55.7%	463	28.0%	260	20.0%	46	16.6%
Shirley West	1,105	94.6%	1,323	91.5%	1,526	84.4%	936	55.0%	571	28.6%	302	20.4%	33	12.5%
Silhill	1,256	94.6%	1,246	91.7%	1,516	85.5%	1,026	54.2%	484	25.5%	278	20.5%	39	14.0%
Total	20,621	95.4%	22,488	92.2%	27,916	86.5%	17,348	60.7%	8,704	30.1%	5,143	21.0%	752	14.7%

Increasing uptake in areas where fewer people have been vaccinated is a key local priority and area of focus for the local NHS & council, working with local communities. You can check if you are currently eligible for a vaccine and book an appointment at the following website: <https://www.nhs.uk/conditions/coronavirus-covid-19/coronavirus-vaccination/book-coronavirus-vaccination/>

Hospital Inpatients

At 1st July, there were 61 Covid positive inpatients in University Hospitals Birmingham NHS Foundation Trust hospitals, compared with 51 to 24th June. This includes 8 in Intensive Treatment / High Dependency Units, compared with 11 on 24th June. This will include a number of Solihull residents although the majority will be Birmingham residents (source: UHB Inpatient reports, 24th June and 1st July).

University Hospitals Birmingham NHS Foundation Trust publish information several times a week at:
<https://www.uhb.nhs.uk/coronavirus-staff/daily-statistics.htm>

Weekly Death Registrations and Occurrences (latest data published covers deaths occurred up to 18th June and registered up to 26th June 2021)

As of the week ending 18th June, there have been 650 deaths of Solihull residents that mention COVID-19. No COVID-19 deaths occurred in the latest week.

Further information is available on the Office for National Statistics death registrations page.

Further Information

<https://coventry-city-council.github.io/covid-19/dashboard/>

This dashboard, developed by Coventry City Council as part of the Local Outbreak Management beacon with Warwickshire and Solihull, contains a variety of useful information and allows users to compare rates in Solihull with other areas.

The next data summary will be published on Friday 9th July.

2nd July 2021