

COVID-19 – Solihull Data Summary, 9th July 2021

Summary

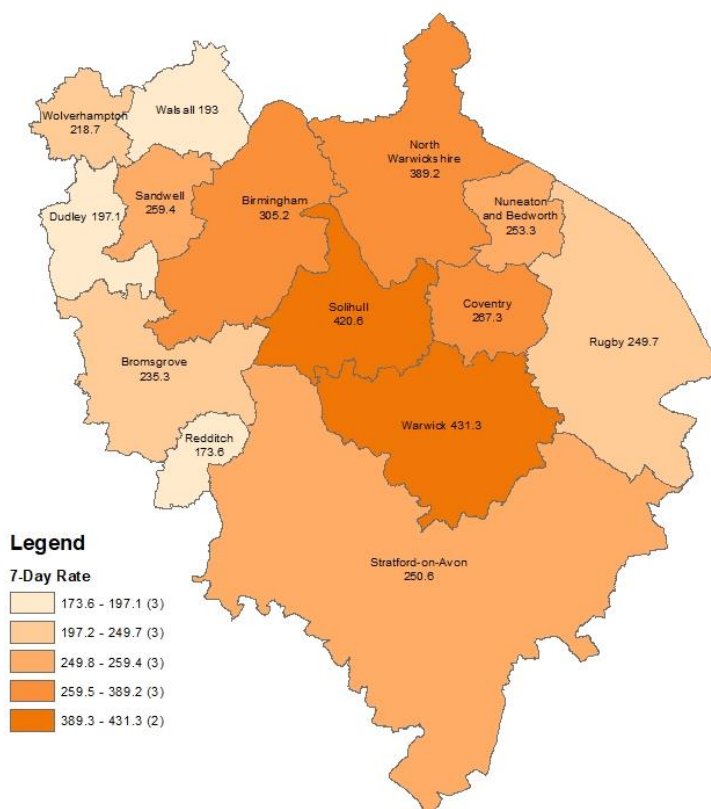
- The number of new cases was 910 in the 7 days to 3rd July, a rate of 420.6 per 100,000 population, an increase of 94% on the previous 7 days.
- Information about Covid vaccine uptake by age group and electoral ward is given in this bulletin.
- At 8th July, there were 99 Covid positive inpatients in University Hospitals Birmingham NHS Foundation Trust hospitals, compared with 61 on 1st July.
- There was one Covid related death of Solihull a resident in w/e 25th June (deaths registered up to 3rd July). (Source: ONS).

Weekly Cases and Rates

COVID-19 cases are identified by taking specimens from people and sending them to laboratories around the UK to be tested. If the test is positive, this is referred to as a lab-confirmed case.

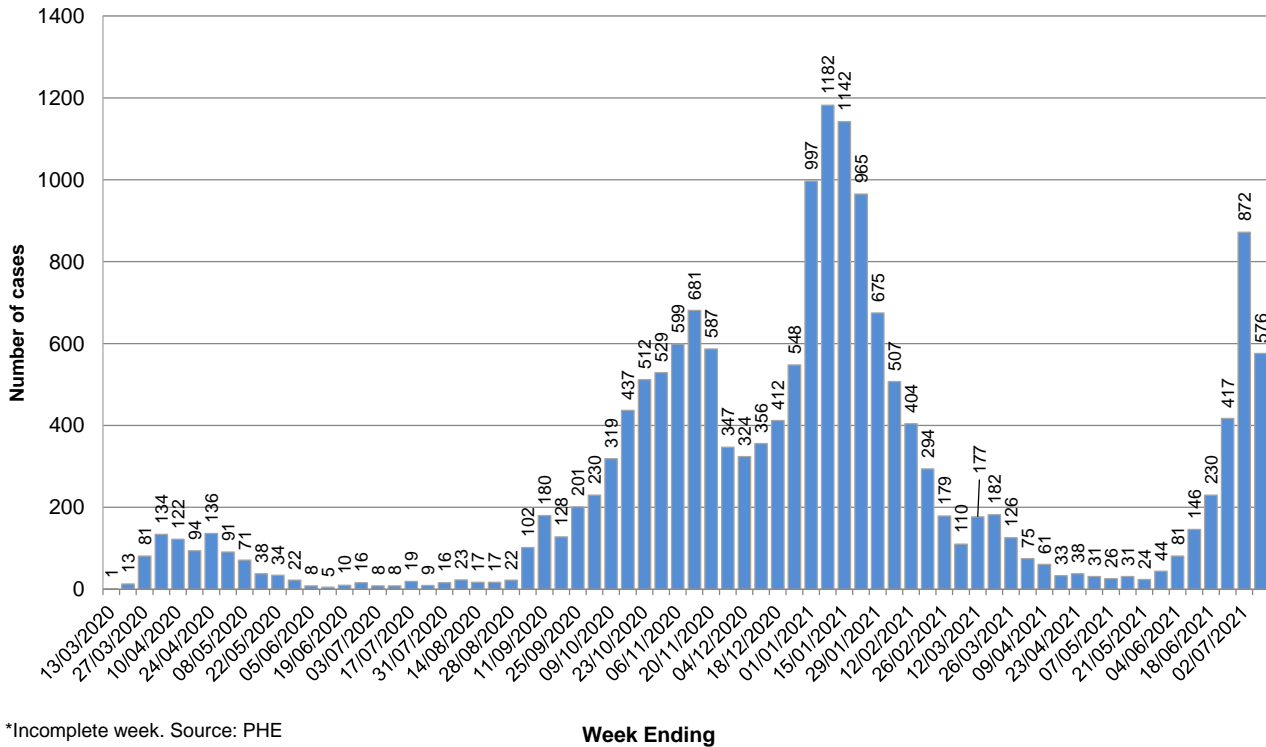
New Cases

In the 7 days to 3rd July, Solihull had 910 new lab-confirmed cases, a rate of 420.6 per 100,000 population. This was an increase of 94% on the previous 7 days.



The breakdown of cases in Solihull by week over time is shown below. It should be noted that case numbers prior to May are not directly comparable as there was much more restricted access to testing.

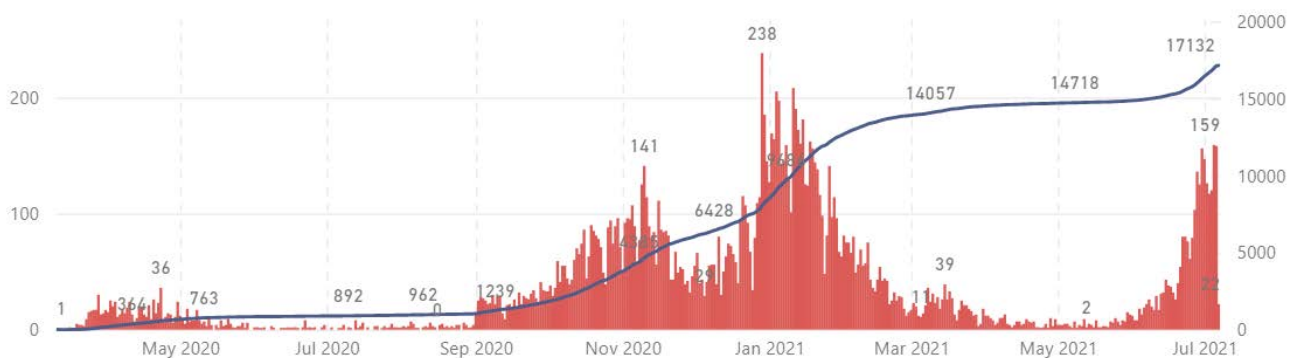
Number of weekly Covid-19 cases in Solihull since 13 March (week ending), Total cases to date = 17132



*Incomplete week. Source: PHE

Total Cases

The total number of lab-confirmed cases in Solihull since the start of the pandemic was 17132 at 7th July. The cumulative number of cases over time is shown in the graph below; the full-sized version of this chart can be found at <https://coventry-city-council.github.io/covid-19/dashboard/#solihull>



Number of New Cases by Ward

The table below shows the number of new lab-confirmed cases by ward for the 14 days between 24th June and 7th July. The number of new cases in the previous 14 days is also shown for comparison. It should be noted that, as electoral wards are relatively small areas, the wards with highest and lowest number of cases are liable to change.

Ward Name	Number of cases 10 th June– 23 rd June	Number of cases 24 th June – 7 th July
Bickenhill	27	106
Blythe	34	136
Castle Bromwich	22	83
Chelmsley Wood	23	93
Dorridge & Hockley Heath	24	113
Elmdon	46	90
Knowle	22	88
Kingshurst & Fordbridge	30	106
Lyndon	38	119
Meriden	14	53
Olton	31	127
Silhill	37	91
Shirley East	28	99
Shirley South	25	76
Shirley West	24	71
St Alphege	43	103
Smith's Wood	35	111
Total	501	1665

Source: Public Health England Data, lab confirmed cases

Reproduction Number (Rt)

The reproduction number is the number of people that one infected person will pass on a virus to, on average. If the reproduction number is higher than one, then the number of cases increase exponentially. If the number is lower the disease will eventually stop spreading, as not enough new people are being infected to sustain the outbreak. The current reproduction number (Rt) for the Midlands region can be found at <https://www.gov.uk/guidance/the-r-number-in-the-uk>.

Vaccinations

The table below shows uptake of the first dose of the Covid-19 vaccine by age group and electoral ward at 6th July. Data is on Birmingham and Solihull CCG registered patients who are resident within Solihull.

Ward Name	Age 70+		Age 60-69		Age 50-59		Age 40-49		Age 30-39		Age 20-29		Age Under 20	
	Vaccinations	Coverage	Vaccinations	Coverage	Vaccinations	Coverage	Vaccinations	Coverage	Vaccinations	Coverage	Vaccinations	Coverage	Vaccinations	Coverage
Bickenhill	1,296	96.6%	1,338	93.6%	1,867	90.3%	1,382	82.5%	1,181	68.7%	882	56.4%	179	58.5%
Dorridge and Hockley Heath	1,216	98.3%	1,300	96.2%	1,681	94.8%	1,425	89.6%	848	78.3%	729	67.7%	200	68.0%
Knowle	1,469	97.7%	1,362	95.8%	1,491	93.6%	1,319	90.3%	792	78.1%	592	65.1%	147	62.6%
Meriden	1,503	98.0%	1,551	96.2%	1,919	93.8%	1,492	88.2%	949	77.3%	801	66.4%	169	56.9%
Castle Bromwich	1,286	96.7%	1,505	94.4%	1,640	90.4%	1,060	84.9%	1,011	68.8%	770	59.5%	133	55.2%
Chelmsley Wood	1,116	94.6%	1,089	91.9%	1,652	86.0%	1,164	75.1%	1,284	60.5%	899	48.1%	168	46.9%
Kingshurst and Fordbridge	910	95.0%	1,075	90.9%	1,649	87.3%	1,207	74.0%	1,294	59.7%	907	48.3%	172	47.8%
Smith's Wood	982	95.8%	1,040	92.3%	1,513	84.4%	1,253	78.3%	1,220	59.2%	922	50.0%	156	43.7%
Blythe	1,249	96.2%	1,426	93.5%	1,889	88.9%	1,829	84.8%	1,621	72.9%	1,047	64.8%	175	57.6%
Elmdon	1,216	96.1%	1,350	94.2%	1,650	90.5%	1,288	81.4%	1,245	70.3%	857	60.1%	145	51.6%
Lyndon	1,111	96.4%	1,392	93.2%	1,761	88.1%	1,462	82.0%	1,379	67.8%	878	52.2%	175	53.8%
Olton	1,292	95.1%	1,509	94.5%	1,839	90.7%	1,335	83.6%	1,118	71.1%	909	63.3%	187	57.2%
St Alphege	1,419	95.9%	1,741	94.1%	1,999	89.8%	1,520	83.3%	951	71.5%	863	64.3%	219	66.4%
Shirley East	1,024	95.5%	1,183	93.0%	1,638	90.9%	1,561	85.3%	1,121	72.0%	738	59.3%	180	63.4%
Shirley South	1,325	95.6%	1,435	92.8%	1,630	91.0%	1,490	82.2%	1,222	73.8%	795	61.1%	162	58.7%
Shirley West	1,120	96.0%	1,359	94.0%	1,624	89.8%	1,431	84.1%	1,486	74.2%	932	63.5%	155	58.7%
Silhill	1,265	95.3%	1,274	93.9%	1,590	89.6%	1,484	78.0%	1,242	65.6%	840	61.9%	178	64.3%
Total	20,799	96.2%	22,929	93.9%	29,032	90.0%	23,702	82.8%	19,964	69.1%	14,361	58.6%	2,900	56.7%

The following table shows uptake of the second dose of Covid-19 vaccine by electoral ward and age group.

Ward Name	Age 70+		Age 60-69		Age 50-59		Age 40-49		Age 30-39		Age 20-29		Age Under 20	
	Vaccinations	Coverage	Vaccinations	Coverage	Vaccinations	Coverage	Vaccinations	Coverage	Vaccinations	Coverage	Vaccinations	Coverage	Vaccinations	Coverage
Bickenhill	1,286	95.8%	1,312	91.8%	1,816	87.9%	1,128	67.3%	606	35.3%	373	23.8%	47	15.4%
Dorridge and Hockley Heath	1,217	98.4%	1,284	95.0%	1,655	93.3%	1,172	73.7%	317	29.3%	227	21.1%	59	20.1%
Knowle	1,461	97.2%	1,347	94.7%	1,459	91.6%	1,070	73.3%	276	27.2%	164	18.0%	32	13.6%
Meriden	1,492	97.3%	1,534	95.1%	1,884	92.1%	1,167	69.0%	356	29.0%	246	20.4%	52	17.5%
Castle Bromwich	1,280	96.2%	1,490	93.4%	1,604	88.4%	922	73.9%	598	40.7%	338	26.1%	42	17.4%
Chelmsley Wood	1,105	93.6%	1,062	89.6%	1,567	81.6%	975	62.9%	788	37.1%	382	20.4%	51	14.2%
Kingshurst and Fordbridge	898	93.7%	1,054	89.2%	1,556	82.4%	981	60.2%	731	33.7%	383	20.4%	52	14.4%
Smith's Wood	975	95.1%	1,010	89.6%	1,449	80.9%	1,060	66.2%	707	34.3%	400	21.7%	38	10.6%
Blythe	1,243	95.7%	1,409	92.4%	1,840	86.6%	1,484	68.8%	608	27.3%	352	21.8%	43	14.1%
Elmdon	1,197	94.5%	1,334	93.1%	1,600	87.8%	1,045	66.1%	613	34.6%	336	23.5%	29	10.3%
Lyndon	1,091	94.6%	1,357	90.8%	1,706	85.3%	1,211	68.0%	763	37.5%	308	18.3%	56	17.2%
Olton	1,285	94.6%	1,492	93.5%	1,777	87.6%	1,129	70.7%	500	31.8%	319	22.2%	39	11.9%
St Alphege	1,410	95.3%	1,723	93.1%	1,953	87.7%	1,264	69.3%	344	25.9%	297	22.1%	61	18.5%
Shirley East	1,015	94.7%	1,162	91.4%	1,577	87.6%	1,273	69.6%	471	30.3%	264	21.2%	50	17.6%
Shirley South	1,315	94.9%	1,421	91.9%	1,565	87.3%	1,182	65.2%	484	29.2%	265	20.4%	46	16.7%
Shirley West	1,102	94.4%	1,327	91.8%	1,559	86.2%	1,090	64.1%	603	30.1%	306	20.8%	33	12.5%
Silhill	1,257	94.7%	1,252	92.3%	1,527	86.1%	1,174	61.7%	497	26.3%	285	21.0%	40	14.4%
Total	20,629	95.4%	22,570	92.4%	28,094	87.1%	19,327	67.5%	9,262	32.0%	5,245	21.4%	770	15.1%

Increasing uptake in areas where fewer people have been vaccinated is a key local priority and area of focus for the local NHS & council, working with local communities. You can check if you are currently eligible for a vaccine and book an appointment at the following website: <https://www.nhs.uk/conditions/coronavirus-covid-19/coronavirus-vaccination/book-coronavirus-vaccination/>

Hospital Inpatients

At 8th July, there were 99 Covid positive inpatients in University Hospitals Birmingham NHS Foundation Trust hospitals, compared with 61 to 1st July. This includes 16 in Intensive Treatment / High Dependency Units, compared with 8 on 1st July. This will include a number of Solihull residents although the majority will be Birmingham residents (source: UHB Inpatient reports, 1st July and 8th July).

University Hospitals Birmingham NHS Foundation Trust publish information several times a week at:
<https://www.uhb.nhs.uk/coronavirus-staff/daily-statistics.htm>

Weekly Death Registrations and Occurrences (latest data published covers deaths occurred up to 25th June and registered up to 3rd July 2021)

As of the week ending 25th June, there have been 652 deaths of Solihull residents that mention COVID-19. One COVID-19 death occurred in the latest week.

Further information is available on the Office for National Statistics death registrations page.

Further Information

<https://coventry-city-council.github.io/covid-19/dashboard/>

This dashboard, developed by Coventry City Council as part of the Local Outbreak Management beacon with Warwickshire and Solihull, contains a variety of useful information and allows users to compare rates in Solihull with other areas.

The next data summary will be published on Friday 16th July.

9th July 2021