

COVID-19 – Solihull Data Summary, 16th July 2021

Summary

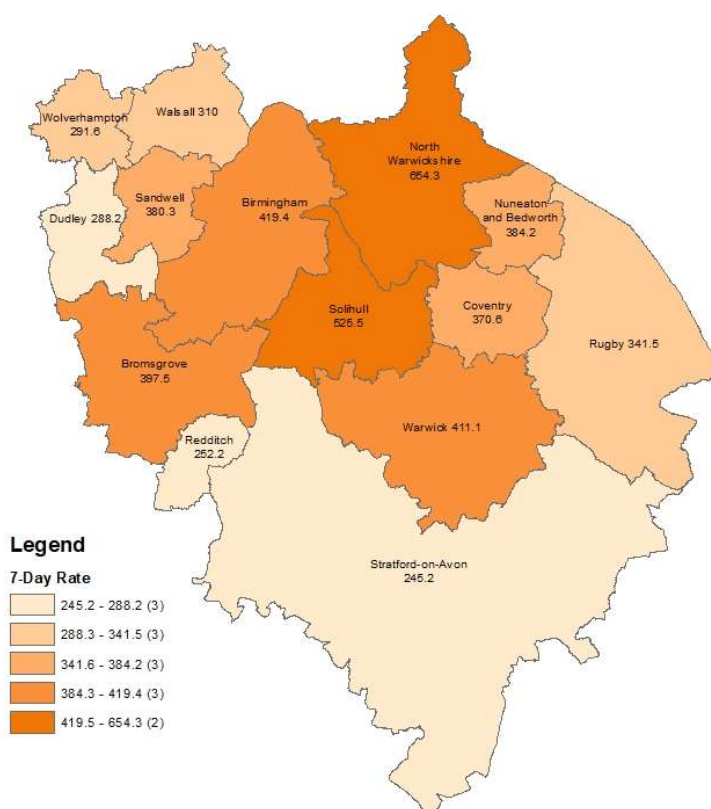
- The number of new cases was 1137 in the 7 days to 10th July, a rate of 525.5 per 100,000 population, an increase of 25% on the previous 7 days.
- Information about Covid vaccine uptake by age group and electoral ward is given in this bulletin.
- At 15th July, there were 163 Covid positive inpatients in University Hospitals Birmingham NHS Foundation Trust hospitals, compared with 99 on 8th July.
- There were no Covid related deaths of Solihull residents in w/e 2nd July (deaths registered up to 10th July). (Source: ONS).

Weekly Cases and Rates

COVID-19 cases are identified by taking specimens from people and sending them to laboratories around the UK to be tested. If the test is positive, this is referred to as a lab-confirmed case.

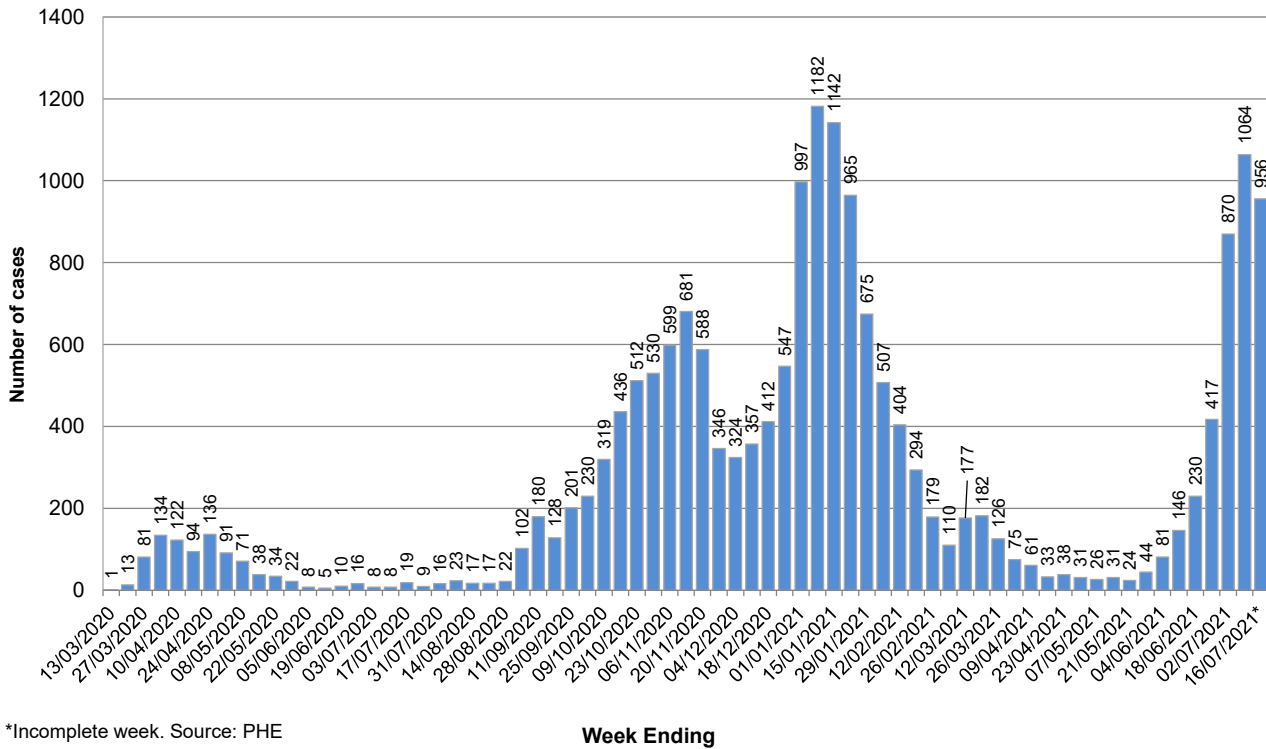
New Cases

In the 7 days to 10th July, Solihull had 1137 new lab-confirmed cases, a rate of 525.5 per 100,000 population. This was an increase of 25% on the previous 7 days.



The breakdown of cases in Solihull by week over time is shown below. It should be noted that case numbers prior to May are not directly comparable as there was much more restricted access to testing.

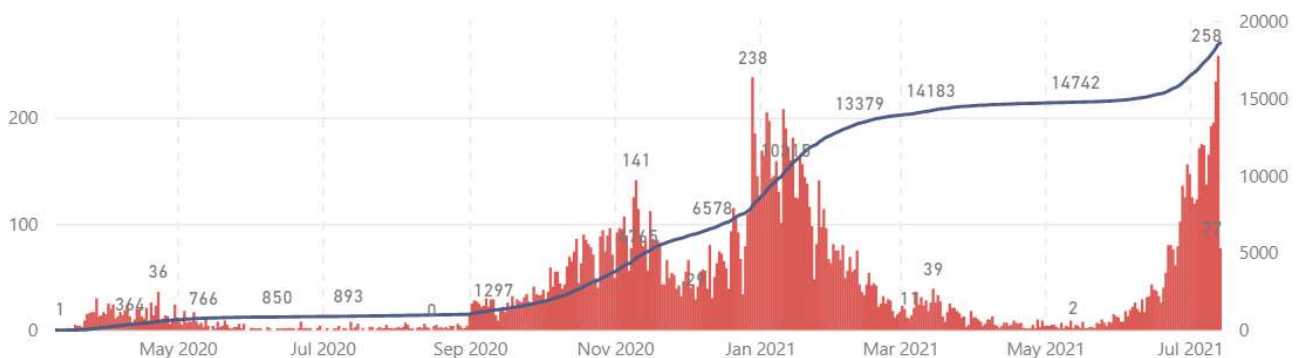
Number of weekly Covid-19 cases in Solihull since 13 March (week ending), Total cases to date = 18574



*Incomplete week. Source: PHE

Total Cases

The total number of lab-confirmed cases in Solihull since the start of the pandemic was 18574 at 14th July. The cumulative number of cases over time is shown in the graph below; the full-sized version of this chart can be found at <https://coventry-city-council.github.io/covid-19/dashboard/#solihull>



Number of New Cases by Ward

The table below shows the number of new lab-confirmed cases by ward for the 14 days between 1st July and 14th July. The number of new cases in the previous 14 days is also shown for comparison. It should be noted that, as electoral wards are relatively small areas, the wards with highest and lowest number of cases are liable to change.

Ward Name	Number of cases 17 th June– 30 th June	Number of cases 1 st July – 14 th July
Bickenhill	48	169
Blythe	85	189
Castle Bromwich	59	110
Chelmsley Wood	60	140
Dorridge & Hockley Heath	59	143
Elmdon	61	118
Knowle	52	124
Kingshurst & Fordbridge	64	201
Lyndon	65	177
Meriden	19	103
Olton	69	156
Silhill	57	137
Shirley East	58	133
Shirley South	41	134
Shirley West	38	156
St Alphege	81	117
Smith's Wood	75	140
Total	991	2447

Source: Public Health England Data, lab confirmed cases

Reproduction Number (Rt)

The reproduction number is the number of people that one infected person will pass on a virus to, on average. If the reproduction number is higher than one, then the number of cases increase exponentially. If the number is lower the disease will eventually stop spreading, as not enough new people are being infected to sustain the outbreak. The current reproduction number (Rt) for the Midlands region can be found at <https://www.gov.uk/guidance/the-r-number-in-the-uk>.

Vaccinations

The table below shows uptake of the first dose of the Covid-19 vaccine by age group and electoral ward at 13th July. Data is on Birmingham and Solihull CCG registered patients who are resident within Solihull.

Ward Name	Age 70+		Age 60-69		Age 50-59		Age 40-49		Age 30-39		Age 20-29		Age Under 20	
	Vaccinations	Coverage	Vaccinations	Coverage	Vaccinations	Coverage	Vaccinations	Coverage	Vaccinations	Coverage	Vaccinations	Coverage	Vaccinations	Coverage
Bickenhill	1,299	96.7%	1,332	93.7%	1,868	90.4%	1,392	83.1%	1,195	69.5%	909	57.9%	187	61.3%
Dorridge and Hockley Heath	1,217	98.3%	1,304	96.1%	1,683	94.8%	1,426	90.2%	854	79.4%	754	69.8%	209	72.1%
Knowle	1,469	97.7%	1,364	95.9%	1,490	93.7%	1,321	90.9%	804	79.0%	616	67.8%	161	68.8%
Meriden	1,500	98.0%	1,552	96.2%	1,922	93.8%	1,499	88.8%	967	79.1%	895	74.4%	201	67.2%
Castle Bromwich	1,287	96.7%	1,503	94.4%	1,642	90.4%	1,062	85.2%	1,021	69.3%	783	60.7%	145	59.9%
Chelmsley Wood	1,114	94.8%	1,091	91.9%	1,654	86.1%	1,172	75.7%	1,304	61.3%	922	49.5%	179	49.6%
Kingshurst and Fordbridge	909	95.0%	1,081	91.3%	1,643	87.3%	1,214	74.3%	1,305	60.3%	928	49.6%	180	50.0%
Smith's Wood	981	95.8%	1,042	92.3%	1,516	84.6%	1,255	78.5%	1,229	59.6%	934	50.6%	163	46.3%
Blythe	1,248	96.1%	1,425	93.5%	1,885	89.0%	1,842	84.9%	1,636	73.6%	1,088	67.4%	189	63.2%
Elmdon	1,211	96.0%	1,355	94.4%	1,649	90.6%	1,289	81.6%	1,265	71.6%	894	62.7%	158	55.8%
Lyndon	1,116	96.4%	1,391	93.2%	1,765	88.2%	1,473	82.6%	1,413	69.4%	919	54.7%	194	59.0%
Olton	1,296	95.2%	1,507	94.6%	1,846	90.9%	1,344	84.3%	1,134	72.4%	953	66.6%	204	61.3%
St Alphege	1,418	95.9%	1,749	94.2%	2,005	90.0%	1,523	83.4%	961	72.2%	907	67.1%	241	71.5%
Shirley East	1,025	95.5%	1,184	93.0%	1,640	91.0%	1,562	85.5%	1,134	72.9%	782	62.6%	191	67.0%
Shirley South	1,320	95.6%	1,438	93.0%	1,626	90.9%	1,494	82.5%	1,236	74.4%	830	63.7%	177	63.9%
Shirley West	1,119	96.0%	1,367	94.1%	1,623	89.9%	1,438	84.4%	1,499	74.9%	961	65.5%	169	63.3%
Silhill	1,266	95.5%	1,278	93.8%	1,589	89.6%	1,488	78.3%	1,263	66.7%	879	64.8%	188	68.1%
Total	20,795	96.3%	22,963	93.9%	29,046	90.0%	23,794	83.1%	20,220	70.0%	14,954	61.0%	3,136	61.1%

The following table shows uptake of the second dose of Covid-19 vaccine by electoral ward and age group.

Ward Name	Age 70+		Age 60-69		Age 50-59		Age 40-49		Age 30-39		Age 20-29		Age Under 20	
	Vaccinations	Coverage	Vaccinations	Coverage	Vaccinations	Coverage	Vaccinations	Coverage	Vaccinations	Coverage	Vaccinations	Coverage	Vaccinations	Coverage
Bickenhill	1,288	95.8%	1,305	91.8%	1,822	88.2%	1,185	70.7%	721	41.9%	398	25.4%	49	16.1%
Dorridge and Hockley Heath	1,219	98.5%	1,290	95.1%	1,657	93.4%	1,236	78.2%	327	30.4%	233	21.6%	59	20.3%
Knowle	1,461	97.2%	1,350	94.9%	1,462	91.9%	1,128	77.6%	297	29.2%	171	18.8%	31	13.2%
Meriden	1,489	97.3%	1,538	95.4%	1,889	92.2%	1,268	75.1%	384	31.4%	259	21.5%	54	18.1%
Castle Bromwich	1,282	96.3%	1,491	93.6%	1,611	88.7%	949	76.1%	698	47.4%	356	27.6%	42	17.4%
Chelmsley Wood	1,102	93.8%	1,068	90.0%	1,583	82.4%	1,009	65.1%	916	43.1%	402	21.6%	52	14.4%
Kingshurst and Fordbridge	898	93.8%	1,058	89.4%	1,559	82.9%	1,029	63.0%	843	39.0%	397	21.2%	53	14.7%
Smith's Wood	974	95.1%	1,012	89.6%	1,453	81.1%	1,091	68.2%	862	41.8%	411	22.3%	37	10.5%
Blythe	1,244	95.8%	1,411	92.6%	1,843	87.0%	1,573	72.5%	652	29.3%	362	22.4%	46	15.4%
Elmdon	1,193	94.6%	1,341	93.4%	1,604	88.1%	1,092	69.2%	656	37.1%	347	24.3%	31	11.0%
Lyndon	1,096	94.6%	1,360	91.2%	1,711	85.5%	1,251	70.2%	826	40.6%	317	18.9%	57	17.3%
Olton	1,287	94.6%	1,491	93.6%	1,785	87.9%	1,181	74.1%	581	37.1%	326	22.8%	40	12.0%
St Alphege	1,412	95.5%	1,730	93.2%	1,956	87.8%	1,329	72.7%	384	28.9%	307	22.7%	61	18.1%
Shirley East	1,016	94.7%	1,165	91.5%	1,585	88.0%	1,324	72.5%	514	33.1%	271	21.7%	52	18.2%
Shirley South	1,313	95.1%	1,425	92.1%	1,574	88.0%	1,247	68.8%	536	32.3%	274	21.0%	46	16.6%
Shirley West	1,103	94.6%	1,339	92.2%	1,569	86.9%	1,170	68.7%	647	32.3%	314	21.4%	34	12.7%
Silhill	1,258	94.9%	1,258	92.4%	1,537	86.6%	1,254	66.0%	572	30.2%	296	21.8%	40	14.5%
Total	20,635	95.5%	22,632	92.6%	28,200	87.4%	20,316	71.0%	10,416	36.0%	5,441	22.2%	784	15.3%

Increasing uptake in areas where fewer people have been vaccinated is a key local priority and area of focus for the local NHS & council, working with local communities. You can check if you are currently eligible for a vaccine and book an appointment at the following website: <https://www.nhs.uk/conditions/coronavirus-covid-19/coronavirus-vaccination/book-coronavirus-vaccination/>

Hospital Inpatients

At 15th July, there were 163 Covid positive inpatients in University Hospitals Birmingham NHS Foundation Trust hospitals, compared with 99 to 8th July. This includes 28 in Intensive Treatment / High Dependency Units, compared with 16 on 8th July. This will include a number of Solihull residents although the majority will be Birmingham residents (source: UHB Inpatient reports, 8th July and 15th July).

University Hospitals Birmingham NHS Foundation Trust publish information several times a week at:
<https://www.uhb.nhs.uk/coronavirus-staff/daily-statistics.htm>

Weekly Death Registrations and Occurrences (latest data published covers deaths occurred up to 2nd July and registered up to 10th July 2021)

As of the week ending 2nd July, there have been 652 deaths of Solihull residents that mention COVID-19. No COVID-19 deaths occurred in the latest week.

Further information is available on the Office for National Statistics death registrations page.

Further Information

<https://coventry-city-council.github.io/covid-19/dashboard/>

This dashboard, developed by Coventry City Council as part of the Local Outbreak Management beacon with Warwickshire and Solihull, contains a variety of useful information and allows users to compare rates in Solihull with other areas.

The next data summary will be published on Friday 23rd July.

16th July 2021