

## COVID-19 – Solihull Data Summary, 20<sup>th</sup> August 2021

### Summary

- The number of new cases was 808 in the 7 days to 14<sup>th</sup> August, a rate of 373.4 per 100,000 population, an increase of 3% on the previous 7 days.
- Information about Covid vaccine uptake by age group and electoral ward is given in this bulletin.
- At 19<sup>th</sup> August, there were 213 Covid positive inpatients in University Hospitals Birmingham NHS Foundation Trust hospitals, compared with 215 on 12<sup>th</sup> August.
- There was one Covid related deaths of a Solihull resident in w/e 6<sup>th</sup> August (deaths registered up to 14<sup>th</sup> August). (Source: ONS).

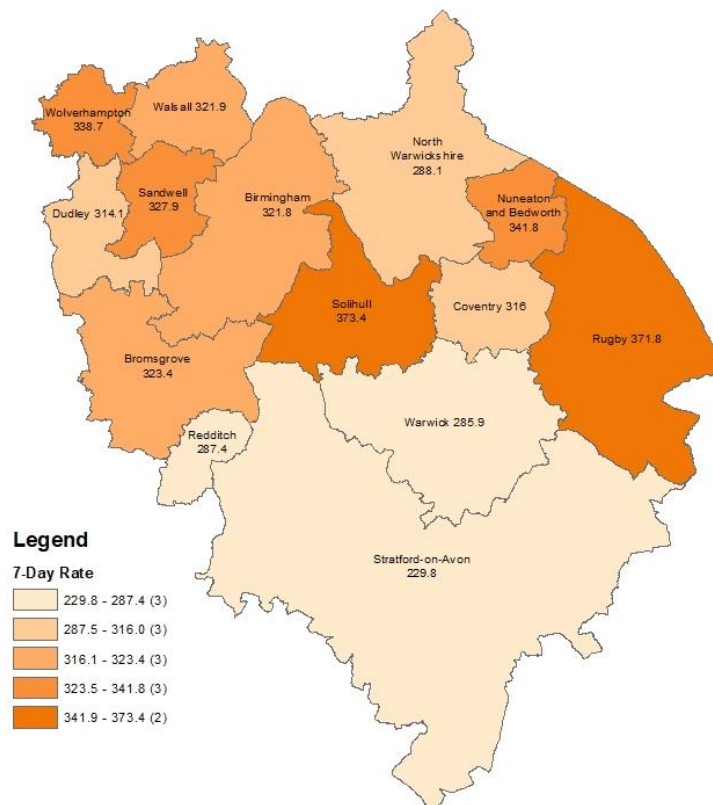
### Weekly Cases and Rates

COVID-19 cases are identified by taking specimens from people and sending them to laboratories around the UK to be tested. If the test is positive, this is referred to as a lab-confirmed case.

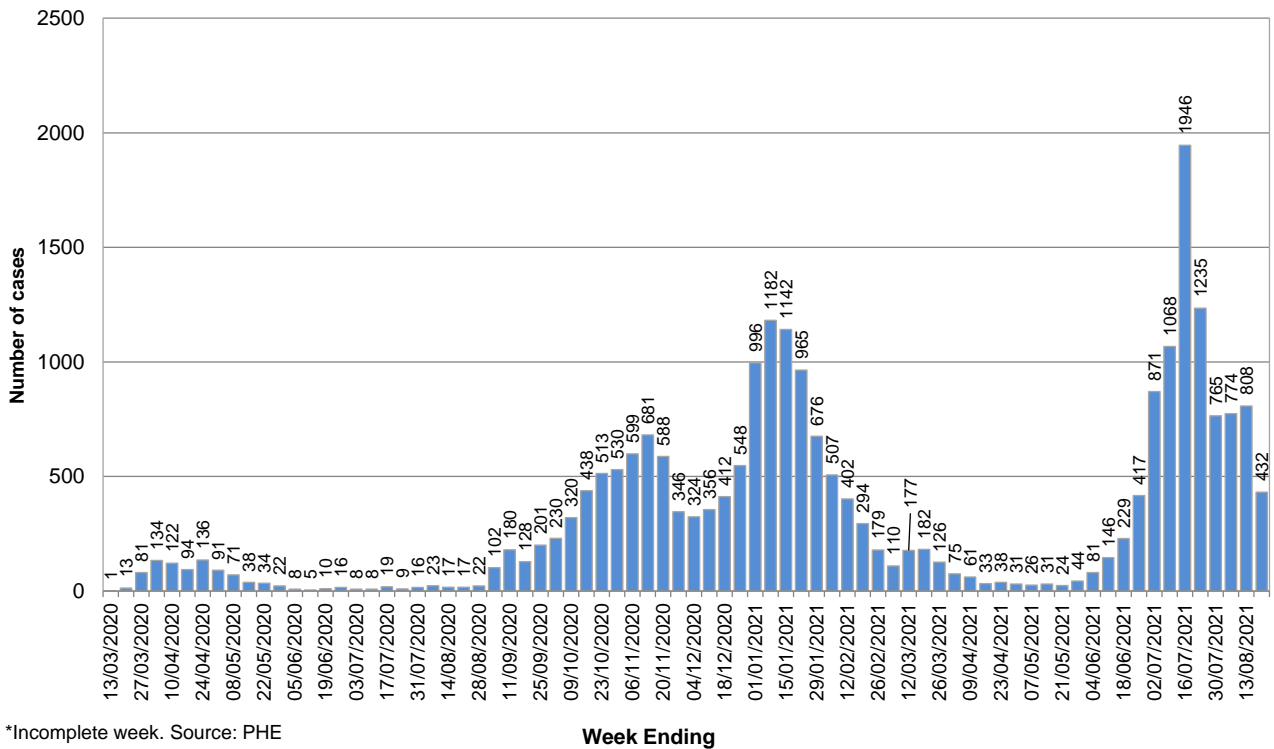
### New Cases

In the 7 days to 14<sup>th</sup> August, Solihull had 808 new lab-confirmed cases, a rate of 373.4 per 100,000 population. This was an increase of 3% on the previous 7 days.

The breakdown of cases in Solihull by week over time is shown below. It should be noted that case numbers prior to May 2020 are not directly comparable as there was much more restricted access to testing at that time.



### Number of weekly Covid-19 cases in Solihull since 13 March (week ending), Total cases to date = 23584

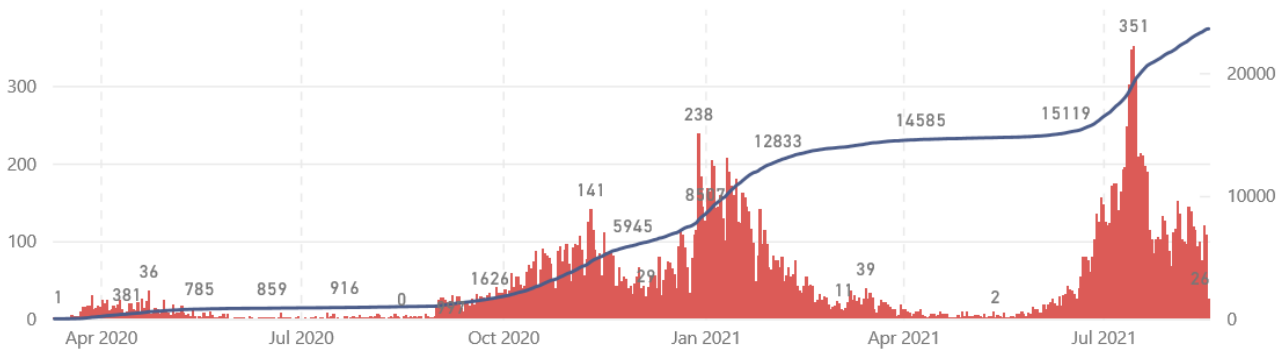


\*Incomplete week. Source: PHE

### Total Cases

The total number of lab-confirmed cases in Solihull since the start of the pandemic was 23585 at 18<sup>th</sup> August. The cumulative number of cases over time is shown in the graph below; the full-sized version of this chart can be found at <https://coventry-city-council.github.io/covid-19/dashboard/#solihull>

● New cases by specimen date — Cumulative cases by specimen date



### Number of New Cases by Ward

The table below shows the number of new lab-confirmed cases by ward for the 14 days between 5<sup>th</sup> August and 18<sup>th</sup> August 2021. The number of new cases in the previous 14 days is also shown for comparison. It should be noted that, as electoral wards are relatively small areas, the wards with highest and lowest number of cases are liable to change.

Ward Name	Number of cases 22 <sup>nd</sup> July – 4 <sup>th</sup> August	Number of cases 5 <sup>th</sup> August – 18 <sup>th</sup> August
Bickenhill	109	106
Blythe	109	123
Castle Bromwich	84	86
Chelmsley Wood	126	112
Dorridge & Hockley Heath	68	84
Elmdon	76	72
Knowle	62	65
Kingshurst & Fordbridge	108	128
Lyndon	99	95
Meriden	63	76
Olton	97	82
Silhill	96	78
Shirley East	86	105
Shirley South	78	92
Shirley West	97	94
St Alphege	89	87
Smith's Wood	98	146
<b>Total</b>	<b>1545</b>	<b>1631</b>

Source: Public Health England Data, lab confirmed cases

### Reproduction Number (Rt)

The reproduction number is the number of people that one infected person will pass on a virus to, on average. If the reproduction number is higher than one, then the number of cases increase exponentially. If the number is lower the disease will eventually stop spreading, as not enough new people are being infected to sustain the outbreak. The current reproduction number (Rt) for the Midlands region can be found at <https://www.gov.uk/guidance/the-r-number-in-the-uk>.

## Vaccinations

The table below shows uptake of the first dose of the Covid-19 vaccine by age group and electoral ward at 16th August. Data is on Birmingham and Solihull CCG registered patients who are resident within Solihull.

Ward Name	Age 70+		Age 60-69		Age 50-59		Age 40-49		Age 30-39		Age 20-29		Age Under 20	
	Vaccinations	Coverage	Vaccinations	Coverage	Vaccinations	Coverage	Vaccinations	Coverage	Vaccinations	Coverage	Vaccinations	Coverage	Vaccinations	Coverage
Bickenhill	1,918	96.7%	1,332	93.7%	1,879	90.7%	1,409	84.6%	1,233	71.1%	1,003	63.5%	263	44.3%
Dorridge and Hockley Heath	1,954	98.2%	1,321	96.2%	1,693	94.9%	1,435	91.2%	867	81.3%	821	76.2%	260	47.9%
Knowle	2,440	98.3%	1,372	95.9%	1,488	94.1%	1,329	91.3%	807	80.6%	671	74.0%	213	44.5%
Meriden	2,384	98.2%	1,562	96.4%	1,944	94.2%	1,506	89.9%	988	81.5%	950	79.9%	262	47.8%
Castle Bromwich	2,006	97.1%	1,506	95.0%	1,664	91.0%	1,051	85.5%	1,069	72.1%	819	64.7%	193	43.9%
Chelmsley Wood	1,613	94.1%	1,105	91.9%	1,656	86.5%	1,186	76.9%	1,346	63.3%	990	53.3%	248	40.7%
Kingshurst and Fordbridge	1,406	95.1%	1,087	91.6%	1,658	87.7%	1,234	75.2%	1,360	63.0%	1,022	54.6%	242	37.1%
Smith's Wood	1,353	95.2%	1,051	92.5%	1,523	85.3%	1,271	79.6%	1,283	61.7%	1,010	54.2%	215	32.8%
Blythe	1,786	96.2%	1,427	93.5%	1,891	89.0%	1,850	84.9%	1,708	76.6%	1,168	72.7%	235	40.0%
Elmdon	1,944	96.4%	1,372	94.6%	1,636	90.6%	1,295	82.7%	1,303	73.7%	956	67.2%	192	36.7%
Lyndon	1,822	95.7%	1,398	93.6%	1,777	88.7%	1,495	83.5%	1,462	71.6%	1,022	60.9%	240	39.9%
Olton	2,308	95.8%	1,518	94.9%	1,841	91.2%	1,355	85.0%	1,180	75.0%	1,041	72.4%	283	46.5%
St Alphege	2,313	96.4%	1,745	93.9%	2,023	90.5%	1,551	84.5%	994	75.2%	1,008	73.7%	319	50.3%
Shirley East	1,814	96.0%	1,190	93.3%	1,664	91.3%	1,554	85.9%	1,157	74.7%	871	69.6%	246	41.3%
Shirley South	2,325	95.7%	1,440	93.2%	1,636	91.2%	1,533	83.5%	1,272	76.5%	914	70.0%	225	43.9%
Shirley West	1,897	96.5%	1,372	94.4%	1,630	90.3%	1,452	85.0%	1,549	76.8%	1,024	69.6%	204	38.9%
Silhill	2,318	95.9%	1,282	94.1%	1,586	89.8%	1,510	78.0%	1,318	69.3%	949	69.1%	228	42.0%
<b>Total</b>	<b>33,601</b>	<b>96.4%</b>	<b>23,080</b>	<b>94.1%</b>	<b>29,189</b>	<b>90.4%</b>	<b>24,016</b>	<b>83.9%</b>	<b>20,896</b>	<b>72.2%</b>	<b>16,239</b>	<b>66.2%</b>	<b>4,068</b>	<b>42.2%</b>

The following table shows uptake of the second dose of Covid-19 vaccine by electoral ward and age group.

Ward Name	Age 70+		Age 60-69		Age 50-59		Age 40-49		Age 30-39		Age 20-29		Age Under 20	
	Vaccinations	Coverage	Vaccinations	Coverage	Vaccinations	Coverage	Vaccinations	Coverage	Vaccinations	Coverage	Vaccinations	Coverage	Vaccinations	Coverage
Bickenhill	1,902	95.9%	1,311	92.3%	1,844	89.0%	1,319	79.2%	1,033	59.5%	647	40.9%	106	17.8%
Dorridge and Hockley Heath	1,955	98.2%	1,310	95.4%	1,674	93.8%	1,383	87.9%	746	69.9%	473	43.9%	101	18.6%
Knowle	2,429	97.8%	1,363	95.3%	1,470	93.0%	1,288	88.5%	677	67.6%	341	37.6%	83	17.3%
Meriden	2,373	97.7%	1,548	95.5%	1,922	93.1%	1,437	85.8%	816	67.3%	445	37.4%	85	15.5%
Castle Bromwich	1,999	96.8%	1,495	94.3%	1,634	89.3%	1,002	81.5%	899	60.6%	558	44.1%	71	16.1%
Chelmsley Wood	1,597	93.2%	1,080	89.9%	1,605	83.8%	1,079	69.9%	1,130	53.2%	713	38.4%	112	18.4%
Kingshurst and Fordbridge	1,390	94.0%	1,069	90.1%	1,597	84.5%	1,134	69.1%	1,105	51.2%	662	35.4%	102	15.6%
Smith's Wood	1,347	94.8%	1,028	90.5%	1,459	81.7%	1,168	73.2%	1,073	51.6%	686	36.8%	93	14.2%
Blythe	1,779	95.9%	1,420	93.1%	1,867	87.9%	1,782	81.8%	1,434	64.3%	688	42.8%	78	13.3%
Elmdon	1,925	95.4%	1,364	94.1%	1,607	89.0%	1,216	77.7%	1,056	59.7%	546	38.4%	64	12.2%
Lyndon	1,794	94.3%	1,375	92.1%	1,739	86.8%	1,382	77.2%	1,180	57.8%	536	31.9%	97	16.1%
Olton	2,287	94.9%	1,502	93.9%	1,794	88.9%	1,279	80.2%	946	60.1%	578	40.2%	81	13.3%
St Alphege	2,305	96.0%	1,727	92.9%	1,987	88.9%	1,474	80.3%	839	63.5%	582	42.6%	119	18.8%
Shirley East	1,806	95.6%	1,176	92.2%	1,618	88.8%	1,470	81.2%	986	63.7%	479	38.3%	83	13.9%
Shirley South	2,311	95.1%	1,431	92.6%	1,598	89.1%	1,432	78.0%	1,055	63.4%	483	37.0%	65	12.7%
Shirley West	1,874	95.4%	1,350	92.8%	1,587	87.9%	1,362	79.7%	1,261	62.5%	561	38.1%	56	10.7%
Silhill	2,308	95.5%	1,270	93.2%	1,548	87.7%	1,423	73.5%	1,079	56.8%	562	40.9%	83	15.3%
<b>Total</b>	<b>33,381</b>	<b>95.8%</b>	<b>22,819</b>	<b>93.1%</b>	<b>28,550</b>	<b>88.4%</b>	<b>22,630</b>	<b>79.0%</b>	<b>17,315</b>	<b>59.9%</b>	<b>9,540</b>	<b>38.9%</b>	<b>1,479</b>	<b>15.3%</b>

Increasing uptake in areas where fewer people have been vaccinated is a key local priority and area of focus for the local NHS & council, working with local communities. You can check if you are currently eligible for a vaccine and book an appointment at the following website: <https://www.nhs.uk/conditions/coronavirus-covid-19/coronavirus-vaccination/book-coronavirus-vaccination/>

## Hospital Inpatients

At 19<sup>th</sup> August, there were 213 Covid positive inpatients in University Hospitals Birmingham NHS Foundation Trust hospitals, compared with 215 on 12<sup>th</sup> August. This includes 33 in Intensive Treatment / High Dependency Units, compared with 31 on 12<sup>th</sup> August. This will include a number of Solihull residents although the majority will be Birmingham residents (source: UHB Inpatient reports, 12<sup>th</sup> August and 19<sup>th</sup> August).

University Hospitals Birmingham NHS Foundation Trust publish information several times a week at: <https://www.uhb.nhs.uk/coronavirus-staff/daily-statistics.htm>

**Weekly Death Registrations and Occurrences** (latest data published covers deaths occurred up to 6<sup>th</sup> August and registered up to 14<sup>th</sup> August 2021)

As of the week ending 6<sup>th</sup> August, there have been 660 deaths of Solihull residents that mention COVID-19. One COVID-19 death occurred in the latest week.

Further information is available on the Office for National Statistics death registrations page.

## Further Information

<https://coventry-city-council.github.io/covid-19/dashboard/>

This dashboard, developed by Coventry City Council as part of the Local Outbreak Management beacon with Warwickshire and Solihull, contains a variety of useful information and allows users to compare rates in Solihull with other areas.

The next data summary will be published on Friday 27<sup>th</sup> August.

20<sup>th</sup> August 2021