

COVID-19 – Solihull Data Summary, 27th August 2021

Summary

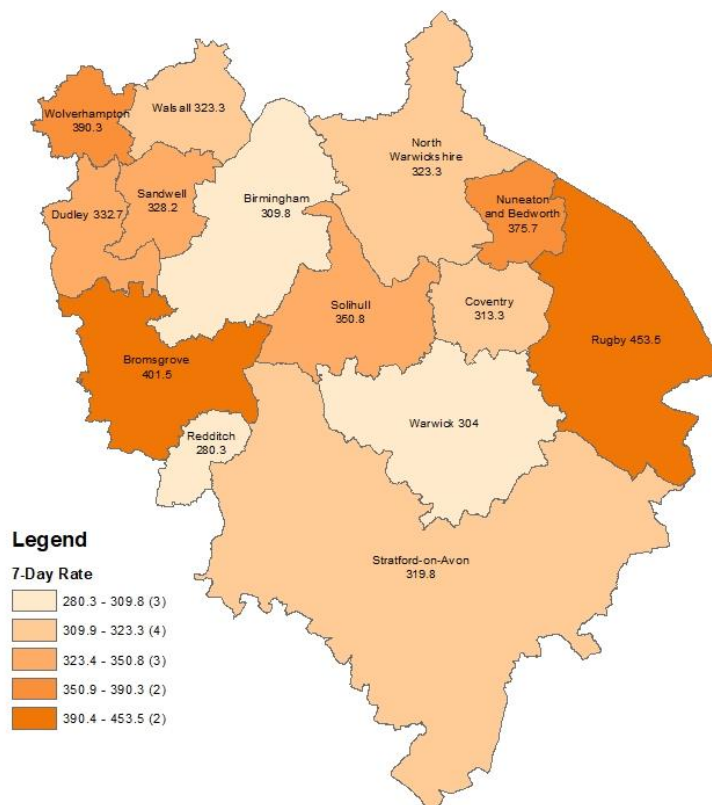
- The number of new cases was 759 in the 7 days to 21st August, a rate of 350.8 per 100,000 population, a decrease of 6% on the previous 7 days.
- Information about Covid vaccine uptake by age group and electoral ward is given in this bulletin.
- At 26th August, there were 229 Covid positive inpatients in University Hospitals Birmingham NHS Foundation Trust hospitals, compared with 213 on 12th August.
- There were 3 Covid related deaths of a Solihull resident in w/e 13th August (deaths registered up to 21st August). (Source: ONS).

Weekly Cases and Rates

COVID-19 cases are identified by taking specimens from people and sending them to laboratories around the UK to be tested. If the test is positive, this is referred to as a lab-confirmed case.

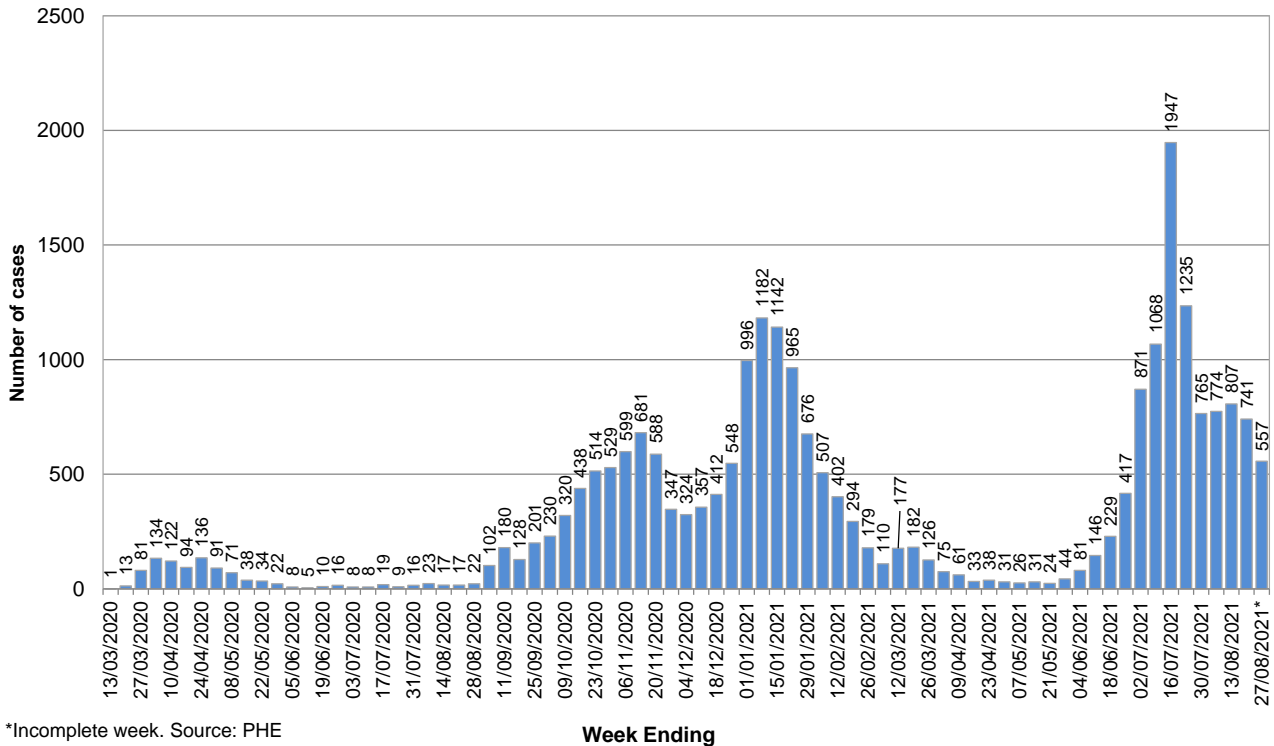
New Cases

In the 7 days to 21st August, Solihull had 759 new lab-confirmed cases, a rate of 350.8 per 100,000 population. This was a decrease of 6% on the previous 7 days.



The breakdown of cases in Solihull by week over time is shown below. It should be noted that case numbers prior to May 2020 are not directly comparable as there was much more restricted access to testing at that time.

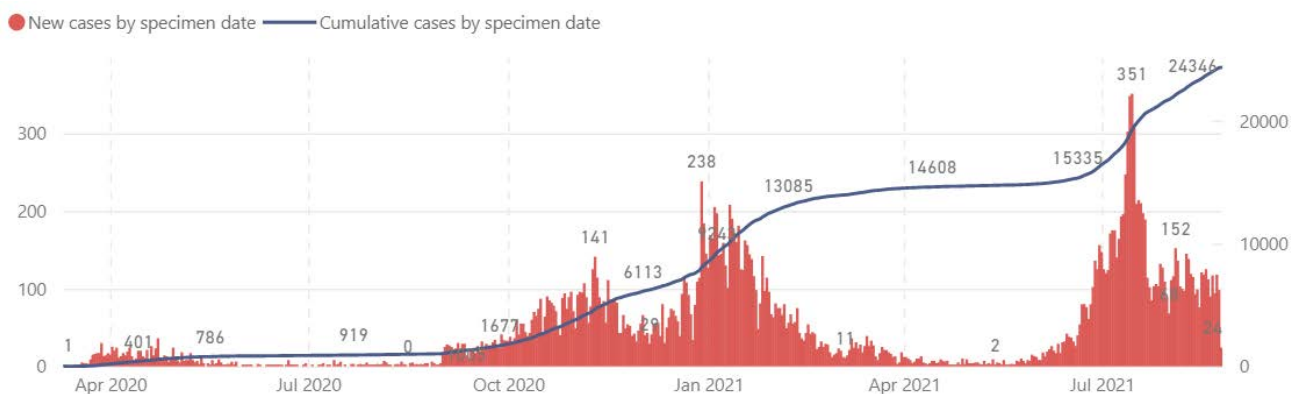
Number of weekly Covid-19 cases in Solihull since 13 March (week ending), Total cases to date = 24452



*Incomplete week. Source: PHE

Total Cases

The total number of lab-confirmed cases in Solihull since the start of the pandemic was 24346 at 25th August. The cumulative number of cases over time is shown in the graph below; the full-sized version of this chart can be found at <https://coventry-city-council.github.io/covid-19/dashboard/#solihull>



Number of New Cases by Ward

The table below shows the number of new lab-confirmed cases by ward for the 14 days between 12th August and 25th August 2021. The number of new cases in the previous 14 days is also shown for comparison. It should be noted that, as electoral wards are relatively small areas, the wards with highest and lowest number of cases are liable to change.

Ward Name	Number of cases 29 th July – 11 th August	Number of cases 12 th August – 25 th August
Bickenhill	113	99
Blythe	102	119
Castle Bromwich	82	65
Chelmsley Wood	119	99
Dorridge & Hockley Heath	72	69
Elmdon	84	58
Knowle	62	75
Kingshurst & Fordbridge	135	88
Lyndon	95	91
Meriden	60	77
Olton	100	75
Silhill	90	64
Shirley East	94	92
Shirley South	93	81
Shirley West	84	84
St Alphege	86	57
Smith's Wood	147	95
Total	1618	1388

Source: Public Health England Data, lab confirmed cases

Reproduction Number (Rt)

The reproduction number is the number of people that one infected person will pass on a virus to, on average. If the reproduction number is higher than one, then the number of cases increase exponentially. If the number is lower the disease will eventually stop spreading, as not enough new people are being infected to sustain the outbreak. The current reproduction number (Rt) for the Midlands region can be found at <https://www.gov.uk/guidance/the-r-number-in-the-uk>.

Vaccinations

The table below shows uptake of the first dose of the Covid-19 vaccine by age group and electoral ward at 27th August. Data is on Birmingham and Solihull CCG registered patients who are resident within Solihull.

Ward Name	Age 70+		Age 60-69		Age 50-59		Age 40-49		Age 30-39		Age 20-29		Age Under 20	
	Vaccinations	Coverage	Vaccinations	Coverage	Vaccinations	Coverage	Vaccinations	Coverage	Vaccinations	Coverage	Vaccinations	Coverage	Vaccinations	Coverage
Bickenhill	1,921	96.8%	1,334	93.9%	1,881	90.8%	1,416	84.7%	1,238	71.4%	1,015	64.2%	317	53.4%
Dorridge and Hockley Heath	1,952	98.2%	1,322	96.3%	1,693	95.0%	1,440	91.4%	871	81.6%	829	77.5%	374	67.5%
Knowle	2,442	98.3%	1,375	96.0%	1,495	94.3%	1,332	91.5%	809	80.7%	672	74.7%	322	66.4%
Meriden	2,384	98.2%	1,557	96.3%	1,946	94.3%	1,511	90.0%	985	81.9%	956	80.3%	327	59.3%
Castle Bromwich	1,999	97.1%	1,511	95.2%	1,662	91.1%	1,061	86.0%	1,066	72.3%	830	65.5%	216	49.1%
Chelmsley Wood	1,613	94.2%	1,109	92.1%	1,663	86.4%	1,184	77.1%	1,349	63.4%	995	53.8%	257	42.4%
Kingshurst and Fordbridge	1,405	95.1%	1,091	91.8%	1,659	87.8%	1,239	75.5%	1,370	63.2%	1,043	55.6%	267	41.0%
Smith's Wood	1,348	95.3%	1,051	92.6%	1,536	85.5%	1,267	79.6%	1,283	61.7%	1,024	54.9%	238	36.6%
Blythe	1,788	96.5%	1,432	93.8%	1,895	89.2%	1,856	85.1%	1,724	77.3%	1,186	73.8%	343	57.8%
Elmdon	1,946	96.5%	1,377	94.8%	1,636	90.5%	1,305	83.0%	1,311	74.4%	977	68.9%	275	52.0%
Lyndon	1,824	95.7%	1,396	93.6%	1,777	88.8%	1,497	83.5%	1,480	72.3%	1,039	61.9%	298	49.6%
Olton	2,308	95.8%	1,518	94.9%	1,834	91.3%	1,357	84.8%	1,185	75.4%	1,049	73.4%	357	58.8%
St Alphege	2,314	96.4%	1,747	93.9%	2,016	90.5%	1,549	84.3%	1,003	75.5%	1,022	75.1%	439	68.2%
Shirley East	1,808	96.2%	1,188	93.2%	1,677	91.5%	1,543	85.4%	1,163	75.4%	885	70.7%	353	58.5%
Shirley South	2,320	95.8%	1,439	93.4%	1,637	91.2%	1,552	83.7%	1,280	77.1%	928	71.2%	327	63.4%
Shirley West	1,897	96.5%	1,385	94.5%	1,628	90.2%	1,455	85.0%	1,564	77.5%	1,039	70.3%	292	55.4%
Silhill	2,329	96.2%	1,290	94.3%	1,591	89.9%	1,515	78.0%	1,336	70.0%	973	70.9%	312	57.1%
Total	33,598	96.5%	23,122	94.2%	29,226	90.5%	24,079	84.0%	21,017	72.7%	16,462	67.2%	5,314	54.8%

The following table shows uptake of the second dose of Covid-19 vaccine by electoral ward and age group.

Ward Name	Age 70+		Age 60-69		Age 50-59		Age 40-49		Age 30-39		Age 20-29		Age Under 20	
	Vaccinations	Coverage	Vaccinations	Coverage	Vaccinations	Coverage	Vaccinations	Coverage	Vaccinations	Coverage	Vaccinations	Coverage	Vaccinations	Coverage
Bickenhill	1,905	96.0%	1,313	92.4%	1,848	89.2%	1,335	79.9%	1,082	62.4%	763	48.3%	140	23.6%
Dorridge and Hockley Heath	1,953	98.3%	1,311	95.5%	1,670	93.7%	1,399	88.8%	792	74.2%	628	58.7%	147	26.5%
Knowle	2,433	97.9%	1,368	95.5%	1,478	93.2%	1,306	89.7%	722	72.1%	492	54.7%	135	27.8%
Meriden	2,374	97.8%	1,545	95.5%	1,925	93.3%	1,449	86.3%	858	71.3%	646	54.3%	131	23.8%
Castle Bromwich	1,994	96.8%	1,500	94.5%	1,631	89.4%	1,011	81.9%	932	63.2%	635	50.1%	105	23.9%
Chelmsley Wood	1,596	93.2%	1,085	90.1%	1,613	83.8%	1,081	70.4%	1,157	54.4%	761	41.1%	134	22.1%
Kingshurst and Fordbridge	1,389	94.0%	1,072	90.2%	1,598	84.6%	1,144	69.8%	1,155	53.3%	761	40.6%	124	19.0%
Smith's Wood	1,342	94.8%	1,026	90.4%	1,473	82.0%	1,175	73.8%	1,104	53.1%	769	41.2%	118	18.1%
Blythe	1,783	96.2%	1,424	93.3%	1,871	88.1%	1,803	82.7%	1,515	68.0%	898	55.9%	127	21.4%
Elmdon	1,926	95.5%	1,368	94.2%	1,615	89.4%	1,246	79.2%	1,143	64.8%	722	51.0%	107	20.2%
Lyndon	1,799	94.4%	1,377	92.3%	1,745	87.2%	1,394	77.8%	1,270	62.0%	705	42.0%	136	22.6%
Olton	2,288	95.0%	1,503	93.9%	1,788	89.0%	1,302	81.4%	1,024	65.1%	771	53.9%	146	24.1%
St Alphege	2,308	96.2%	1,733	93.2%	1,990	89.4%	1,487	80.9%	903	68.0%	766	56.3%	180	28.0%
Shirley East	1,801	95.8%	1,176	92.3%	1,638	89.4%	1,478	81.8%	1,048	67.9%	625	50.0%	142	23.5%
Shirley South	2,308	95.3%	1,429	92.8%	1,607	89.6%	1,483	79.9%	1,133	68.2%	667	51.2%	121	23.4%
Shirley West	1,879	95.6%	1,365	93.1%	1,591	88.2%	1,388	81.1%	1,361	67.4%	746	50.5%	113	21.4%
Silhill	2,318	95.7%	1,277	93.3%	1,561	88.2%	1,438	74.0%	1,157	60.6%	737	53.7%	136	24.9%
Total	33,396	95.9%	22,872	93.2%	28,642	88.7%	22,919	79.9%	18,356	63.5%	12,092	49.4%	2,242	23.1%

Increasing uptake in areas where fewer people have been vaccinated is a key local priority and area of focus for the local NHS & council, working with local communities. You can check if you are currently eligible for a vaccine and book an appointment at the following website: <https://www.nhs.uk/conditions/coronavirus-covid-19/coronavirus-vaccination/book-coronavirus-vaccination/>

Hospital Inpatients

At 26th August, there were 229 Covid positive inpatients in University Hospitals Birmingham NHS Foundation Trust hospitals, compared with 213 on 19th August. This includes 37 in Intensive Treatment / High Dependency Units, compared with 33 on 19th August. This will include a number of Solihull residents although the majority will be Birmingham residents (source: UHB Inpatient reports, 19th August and 26th August).

University Hospitals Birmingham NHS Foundation Trust publish information several times a week at: <https://www.uhb.nhs.uk/coronavirus-staff/daily-statistics.htm>

Weekly Death Registrations and Occurrences (latest data published covers deaths occurred up to 13th August and registered up to 21st August 2021)

As of the week ending 13th August, there have been 663 deaths of Solihull residents that mention COVID-19. 3 COVID-19 deaths occurred in the latest week.

Further information is available on the Office for National Statistics death registrations page.

Further Information

<https://coventry-city-council.github.io/covid-19/dashboard/>

This dashboard, developed by Coventry City Council as part of the Local Outbreak Management beacon with Warwickshire and Solihull, contains a variety of useful information and allows users to compare rates in Solihull with other areas.

The next data summary will be published on Friday 3rd September.

27th August 2021