

COVID-19 – Solihull Data Summary, 10th September 2021

Summary

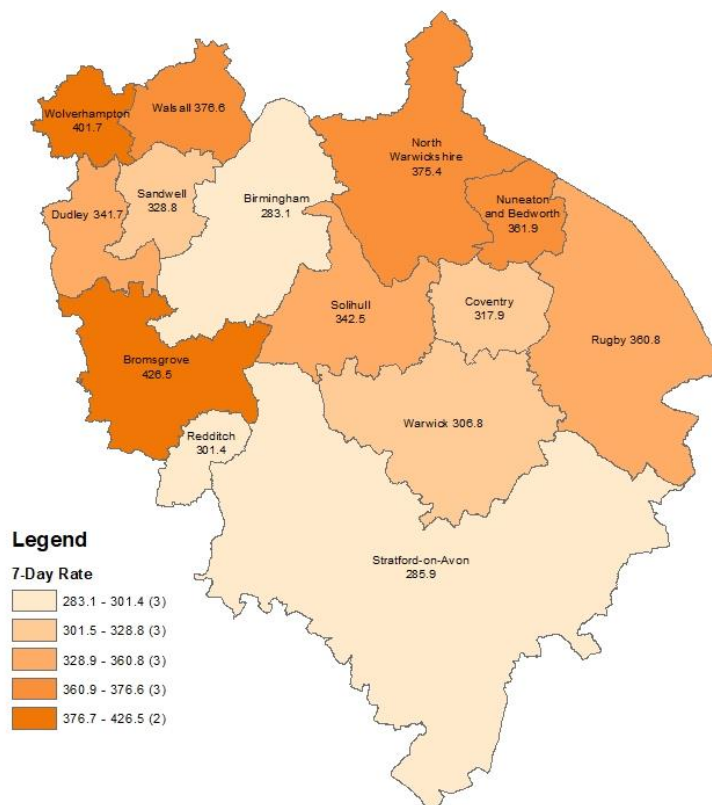
- The number of new cases was 741 in the 7 days to 3rd September, a rate of 342.5 per 100,000 population, a decrease of 3% on the previous 7 days.
- Information about Covid vaccine uptake by age group and electoral ward is given in this bulletin.
- At 7th September, there were 242 Covid positive inpatients in University Hospitals Birmingham NHS Foundation Trust hospitals, compared with 226 on 2nd September.
- There were 2 Covid related deaths of a Solihull resident in w/e 27th August (deaths registered up to 4th September). (Source: ONS).

Weekly Cases and Rates

COVID-19 cases are identified by taking specimens from people and sending them to laboratories around the UK to be tested. If the test is positive, this is referred to as a lab-confirmed case.

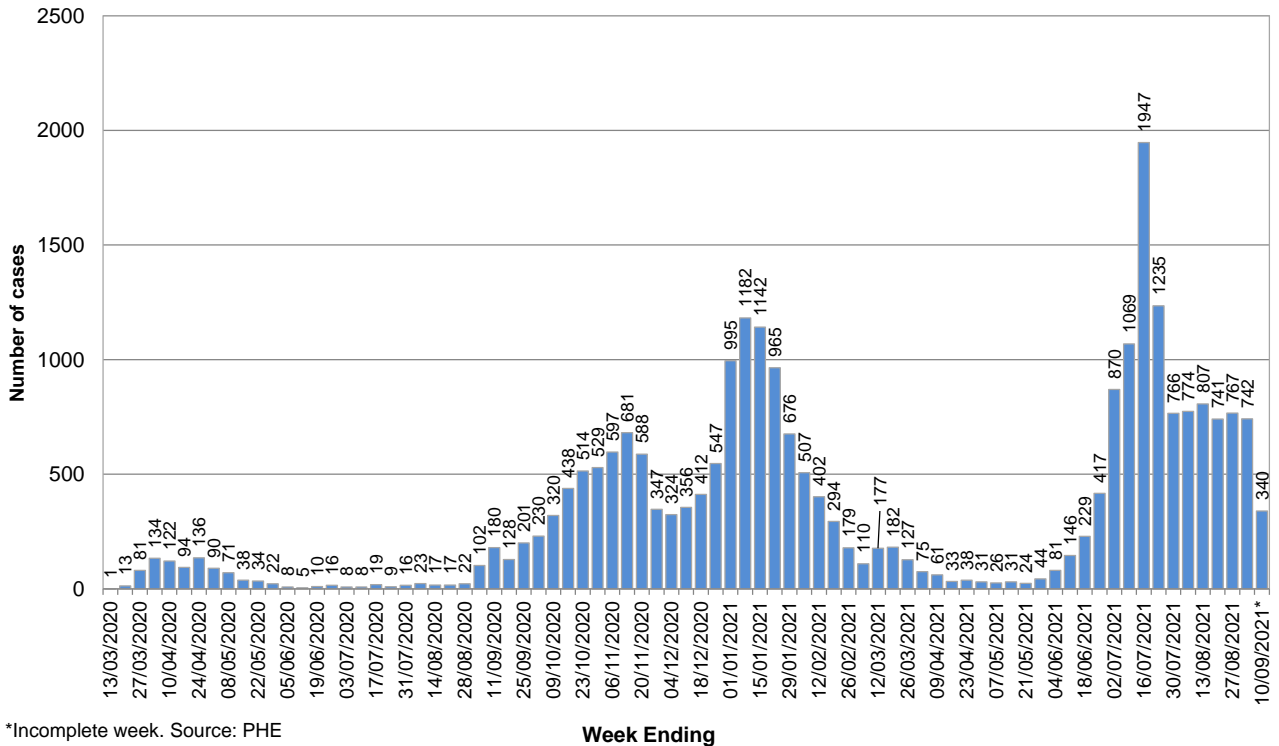
New Cases

In the 7 days to 3rd September, Solihull had 741 new lab-confirmed cases, a rate of 342.5 per 100,000 population. This was a decrease of 3% on the previous 7 days.



The breakdown of cases in Solihull by week over time is shown below. It should be noted that case numbers prior to May 2020 are not directly comparable as there was much more restricted access to testing at that time.

Number of weekly Covid-19 cases in Solihull since 13 March (week ending), Total cases to date = 25740

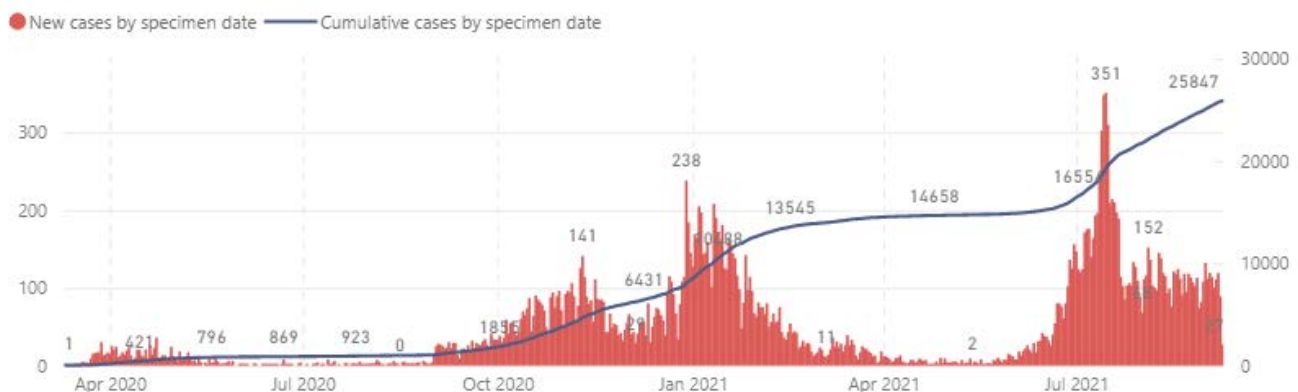


*Incomplete week. Source: PHE

Total Cases

The total number of lab-confirmed cases in Solihull since the start of the pandemic was 25847 at 8TH September. The cumulative number of cases over time is shown in the graph below; the full-sized version of this chart can be found at <https://coventry-city-council.github.io/covid-19/dashboard/#solihull>

All ages



Number of New Cases by Ward

The table below shows the number of new lab-confirmed cases by ward for the 14 days between 24TH August and 6TH September 2021. The number of new cases in the previous 14 days is also shown for comparison. It should be noted that, as electoral wards are relatively small areas, the wards with highest and lowest number of cases are liable to change.

Ward Name	Number of cases 10 ^h August – 23 RD September	Number of cases 24 TH August – 6 TH September
Bickenhill	112	86
Blythe	127	96
Castle Bromwich	71	65
Chelmsley Wood	113	87
Dorridge & Hockley Heath	73	69
Elmdon	71	90
Knowle	84	78
Kingshurst & Fordbridge	100	105
Lyndon	99	96
Meriden	81	106
Olton	82	95
Silhill	69	82
Shirley East	97	94
Shirley South	88	88
Shirley West	94	93
St Alphege	66	87
Smith's Wood	110	71
Total	1537	1488

Source: Public Health England Data, lab confirmed cases

Reproduction Number (Rt)

The reproduction number is the number of people that one infected person will pass on a virus to, on average. If the reproduction number is higher than one, then the number of cases increase exponentially. If the number is lower the disease will eventually stop spreading, as not enough new people are being infected to sustain the outbreak. The current reproduction number (Rt) for the Midlands region can be found at <https://www.gov.uk/guidance/the-r-number-in-the-uk>.

Vaccinations

The table below shows uptake of the first dose of the Covid-19 vaccine by age group and electoral ward at 7 September 2021. Data is on Birmingham and Solihull CCG registered patients who are resident within Solihull.

Ward Name	Age 70+		Age 60-69		Age 50-59		Age 40-49		Age 30-39		Age 20-29		Age Under 20	
	Vaccinations	Coverage	Vaccinations	Coverage	Vaccinations	Coverage	Vaccinations	Coverage	Vaccinations	Coverage	Vaccinations	Coverage	Vaccinations	Coverage
Bickenhill	1,927	96.9%	1,336	93.8%	1,880	90.9%	1,414	84.8%	1,252	72.1%	1,038	65.7%	348	58.7%
Dorridge and Hockley Heath	1,955	98.2%	1,318	96.3%	1,684	95.2%	1,441	91.7%	883	82.3%	845	79.0%	402	72.8%
Knowle	2,443	98.3%	1,376	96.0%	1,498	94.3%	1,323	91.4%	810	81.2%	675	75.6%	368	75.3%
Meriden	2,387	98.1%	1,558	96.4%	1,950	94.4%	1,508	90.1%	992	82.2%	965	81.2%	405	72.8%
Castle Bromwich	1,997	97.1%	1,514	95.1%	1,662	91.2%	1,061	85.9%	1,081	73.2%	845	66.4%	252	57.7%
Chelmsley Wood	1,612	94.3%	1,109	92.0%	1,667	86.5%	1,179	77.0%	1,351	63.6%	1,017	55.0%	300	49.3%
Kingshurst and Fordbridge	1,405	95.2%	1,093	91.9%	1,663	87.8%	1,234	75.9%	1,391	64.0%	1,060	56.7%	321	49.5%
Smith's Wood	1,346	95.3%	1,054	92.5%	1,536	85.7%	1,269	79.7%	1,288	61.8%	1,036	55.7%	281	43.4%
Blythe	1,789	96.5%	1,437	93.9%	1,895	89.2%	1,861	85.2%	1,731	77.7%	1,198	74.3%	376	63.7%
Elmdon	1,940	96.5%	1,380	94.9%	1,640	90.7%	1,310	83.0%	1,325	74.8%	978	69.2%	324	60.6%
Lyndon	1,824	95.7%	1,398	93.5%	1,780	88.9%	1,503	83.5%	1,490	72.7%	1,057	63.2%	346	57.2%
Olton	2,305	95.9%	1,522	94.9%	1,839	91.3%	1,354	85.1%	1,192	75.8%	1,051	73.9%	410	67.1%
St Alphege	2,322	96.5%	1,750	93.9%	2,018	90.5%	1,550	84.4%	1,005	75.8%	1,026	75.7%	477	73.7%
Shirley East	1,813	96.2%	1,183	93.2%	1,678	91.6%	1,546	85.4%	1,172	76.0%	905	71.8%	399	65.7%
Shirley South	2,338	95.8%	1,436	93.6%	1,638	91.3%	1,553	83.7%	1,287	77.2%	937	72.2%	365	70.5%
Shirley West	1,894	96.5%	1,389	94.5%	1,632	90.4%	1,452	85.2%	1,571	77.9%	1,052	71.3%	329	62.7%
Silhill	2,325	96.2%	1,294	94.3%	1,594	89.9%	1,522	78.4%	1,344	70.4%	987	71.4%	348	63.7%
Total	33,622	96.5%	23,147	94.2%	29,254	90.5%	24,080	84.1%	21,165	73.1%	16,672	68.1%	6,051	62.3%

The following table shows uptake of the second dose of Covid-19 vaccine by electoral ward and age group.

Ward Name	Age 70+		Age 60-69		Age 50-59		Age 40-49		Age 30-39		Age 20-29		Age Under 20	
	Vaccinations	Coverage	Vaccinations	Coverage	Vaccinations	Coverage	Vaccinations	Coverage	Vaccinations	Coverage	Vaccinations	Coverage	Vaccinations	Coverage
Bickenhill	1,911	96.1%	1,315	92.3%	1,846	89.3%	1,341	80.4%	1,109	63.9%	834	52.8%	156	26.3%
Dorridge and Hockley Heath	1,956	98.3%	1,309	95.6%	1,661	93.9%	1,402	89.2%	812	75.7%	701	65.5%	173	31.3%
Knowle	2,433	97.9%	1,368	95.5%	1,481	93.3%	1,300	89.8%	739	74.1%	548	61.4%	153	31.3%
Meriden	2,377	97.7%	1,546	95.7%	1,927	93.3%	1,450	86.6%	880	72.9%	733	61.7%	150	27.0%
Castle Bromwich	1,993	96.9%	1,502	94.3%	1,634	89.7%	1,011	81.9%	960	65.0%	690	54.2%	115	26.3%
Chelmsley Wood	1,592	93.2%	1,087	90.2%	1,618	83.9%	1,086	70.9%	1,193	56.2%	803	43.4%	146	24.0%
Kingshurst and Fordbridge	1,389	94.1%	1,076	90.5%	1,604	84.7%	1,149	70.7%	1,205	55.4%	829	44.3%	144	22.2%
Smith's Wood	1,340	94.8%	1,031	90.5%	1,472	82.1%	1,181	74.1%	1,116	53.5%	825	44.4%	134	20.7%
Blythe	1,783	96.2%	1,428	93.3%	1,871	88.0%	1,813	83.0%	1,557	69.9%	985	61.1%	150	25.4%
Elmdon	1,920	95.5%	1,369	94.2%	1,618	89.4%	1,258	79.7%	1,180	66.6%	795	56.3%	131	24.5%
Lyndon	1,801	94.5%	1,383	92.5%	1,750	87.4%	1,412	78.5%	1,331	65.0%	788	47.1%	159	26.3%
Olton	2,288	95.2%	1,507	94.0%	1,796	89.2%	1,300	81.7%	1,063	67.6%	845	59.4%	168	27.5%
St Alphege	2,314	96.1%	1,739	93.3%	1,994	89.4%	1,499	81.6%	925	69.8%	829	61.1%	205	31.7%
Shirley East	1,807	95.9%	1,172	92.4%	1,642	89.7%	1,487	82.1%	1,072	69.5%	698	55.4%	159	26.2%
Shirley South	2,325	95.2%	1,426	93.0%	1,610	89.7%	1,492	80.4%	1,162	69.7%	740	57.1%	154	29.7%
Shirley West	1,876	95.6%	1,371	93.3%	1,597	88.4%	1,383	81.1%	1,403	69.6%	842	57.1%	137	26.1%
Silhill	2,316	95.8%	1,281	93.4%	1,568	88.4%	1,457	75.0%	1,199	62.8%	812	58.8%	165	30.2%
Total	33,421	95.9%	22,910	93.3%	28,689	88.8%	23,021	80.4%	18,906	65.3%	13,297	54.3%	2,599	26.7%

Increasing uptake in areas where fewer people have been vaccinated is a key local priority and area of focus for the local NHS & council, working with local communities. You can check if you are currently eligible for a vaccine and book an appointment at the following website: <https://www.nhs.uk/conditions/coronavirus-covid-19/coronavirus-vaccination/book-coronavirus-vaccination/>

Hospital Inpatients

At 9th September, there were 242 Covid positive inpatients in University Hospitals Birmingham NHS Foundation Trust hospitals, compared with 226 on 2nd September. This includes 34 in Intensive Treatment / High Dependency Units, compared with 39 on 2nd September. This will include a number of Solihull residents although the majority will be Birmingham residents (source: UHB Inpatient reports, 2nd and 9th September).

University Hospitals Birmingham NHS Foundation Trust publish information several times a week at:
<https://www.uhb.nhs.uk/coronavirus-staff/daily-statistics.htm>

Weekly Death Registrations and Occurrences (latest data published covers deaths occurred up to 27th August and registered up to 4th September 2021)

As of the week ending 27th August, there have been 673 deaths of Solihull residents that mention COVID-19. 2 COVID-19 deaths occurred in the latest week.

Further information is available on the Office for National Statistics death registrations page.

Further Information

<https://coventry-city-council.github.io/covid-19/dashboard/>

This dashboard, developed by Coventry City Council, contains a variety of useful information and allows users to compare rates in Solihull with other areas.

The next data summary will be published on Friday 17th September.

10th September 2021