

COVID-19 – Solihull Data Summary, 24TH September 2021

Summary

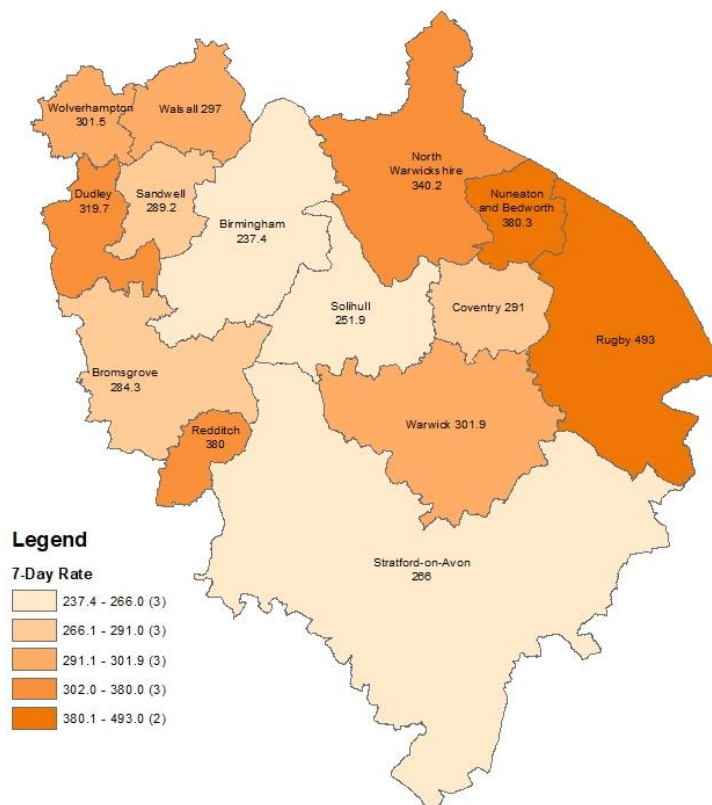
- The number of new cases was **545** in the 7 days to **17TH September**, a rate of **251.9** per 100,000 population, a decrease of **25%** on the previous 7 days.
- Information about Covid vaccine uptake by age group and electoral ward is given in this bulletin.
- At **23RD September**, there were **165** Covid positive inpatients in University Hospitals Birmingham NHS Foundation Trust hospitals, compared with **206** on **16TH September**.
- There were **3** Covid related deaths of a Solihull resident in **w/e 10TH September** (deaths registered up to **18TH September**). (Source: ONS).

Weekly Cases and Rates

COVID-19 cases are identified by taking specimens from people and sending them to laboratories around the UK to be tested. If the test is positive, this is referred to as a lab-confirmed case.

New Cases

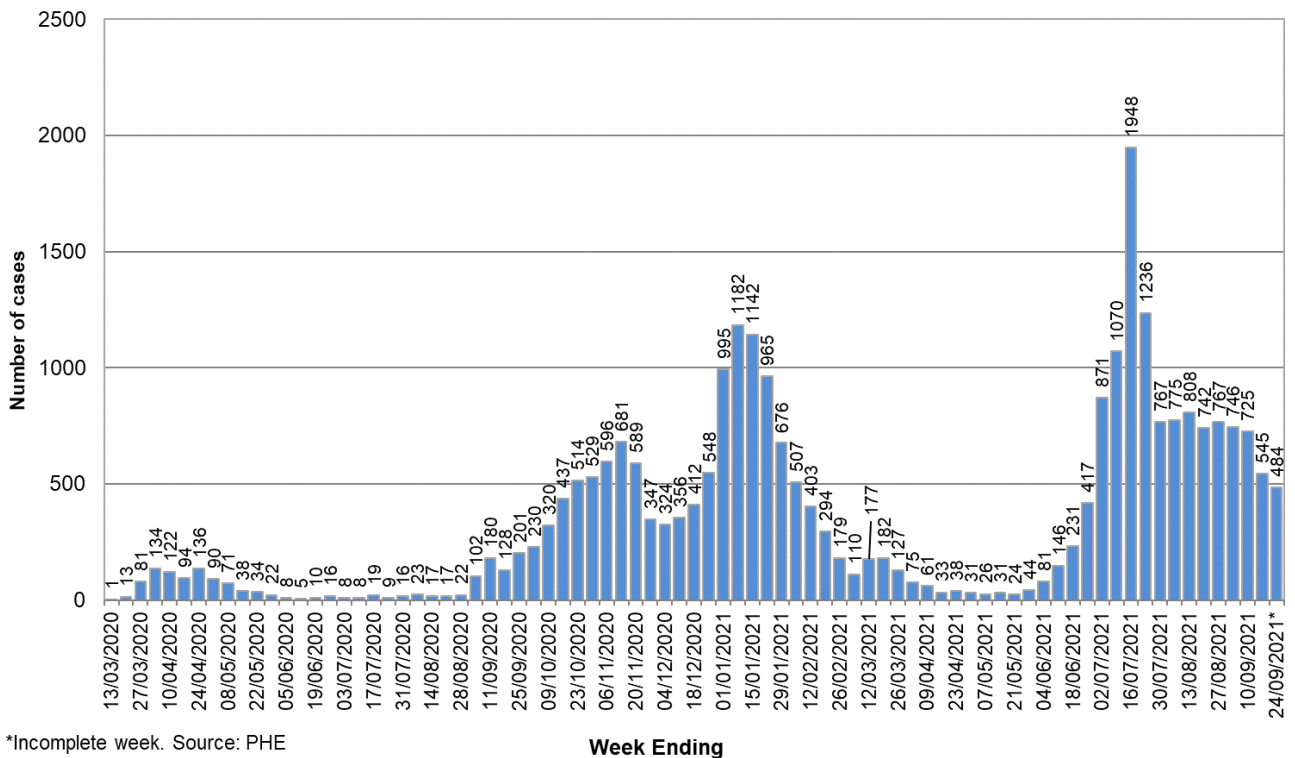
In the 7 days to **17TH September**, Solihull had **545** new lab-confirmed cases, a rate of **251.9** per 100,000 population. This was a decrease of **25%** on the previous 7 days.



The number of new cases has risen since 17th September; more information will be given in next week's bulletin and the latest rate can be found at <https://coventry-city-council.github.io/covid-19/dashboard/>.

The breakdown of cases in Solihull by week over time is shown below. It should be noted that case numbers prior to May 2020 are not directly comparable as there was much more restricted access to testing at that time.

Number of weekly Covid-19 cases in Solihull since 13 March (week ending), Total cases to date = 27169

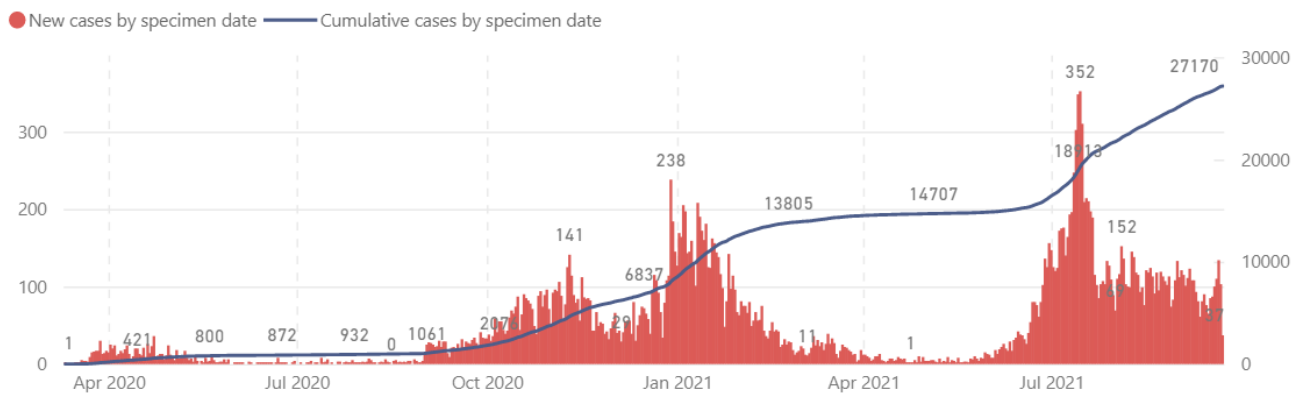


*Incomplete week. Source: PHE

Total Cases

The total number of lab-confirmed cases in Solihull since the start of the pandemic was **27170** at **22ND September**. The cumulative number of cases over time is shown in the graph below; the full-sized version of this chart can be found at <https://coventry-city-council.github.io/covid-19/dashboard/#solihull>

All ages



Number of New Cases by Ward

The table below shows the number of new lab-confirmed cases by ward for the 14 days **between 6TH and 19TH September 2021**. The number of new cases in the previous 14 days is also shown for comparison. It should be noted that, as electoral wards are relatively small areas, the wards with highest and lowest number of cases are liable to change.

SWAP THESE ROUND

Ward Name	Number of cases 6 TH September – 19 TH September	Number of cases 23 RD August – 5 TH September
Bickenhill	92	94
Blythe	83	96
Castle Bromwich	70	67
Chelmsley Wood	71	91
Dorridge & Hockley Heath	71	80
Elmdon	67	87
Knowle	72	79
Kingshurst & Fordbridge	80	105
Lyndon	73	97
Meriden	107	102
Olton	83	91
Silhill	60	82
Shirley East	66	93
Shirley South	50	88
Shirley West	71	98
St Alphege	70	89
Smith's Wood	82	73
Total	1268	1512

Source: Public Health England Data, lab confirmed cases

Reproduction Number (Rt)

The reproduction number is the number of people that one infected person will pass on a virus to, on average. If the reproduction number is higher than one, then the number of cases increase exponentially. If the number is lower the disease will eventually stop spreading, as not enough new people are being infected to sustain the outbreak. The current reproduction number (Rt) for the Midlands region can be found at <https://www.gov.uk/guidance/the-r-number-in-the-uk>.

Vaccinations

The table below shows uptake of the first dose of the Covid-19 vaccine by age group and electoral ward at 20 September 2021. Data is on Birmingham and Solihull CCG registered patients who are resident within Solihull.

1st dose		70	80	60		50		40		30		20		0	10
Ward Code	Ward Name	Age 70+		Age 60-69		Age 50-59		Age 40-49		Age 30-39		Age 20-29		Age Under 20	
		Vaccinations	Coverage	Vaccinations	Coverage	Vaccinations	Coverage	Vaccinations	Coverage	Vaccinations	Coverage	Vaccinations	Coverage	Vaccinations	Coverage
E05001284	Bickenhill	1,936	96.9%	1,338	93.8%	1,873	90.8%	1,418	85.0%	1,267	72.7%	1,048	66.7%	368	62.0%
E05001288	Dorridge and Hockley Heath	1,955	98.2%	1,319	96.4%	1,686	95.1%	1,440	92.0%	889	83.0%	860	80.1%	414	76.2%
E05001291	Knowle	2,445	98.4%	1,376	96.1%	1,497	94.3%	1,321	91.5%	818	81.4%	690	77.2%	375	78.5%
E05001293	Meriden	2,401	98.1%	1,553	96.4%	1,947	94.5%	1,519	90.4%	987	82.3%	972	81.9%	416	75.9%
E05001286	Castle Bromwich	1,997	97.0%	1,509	95.1%	1,660	91.3%	1,067	86.4%	1,090	74.0%	861	67.6%	269	61.1%
E05001287	Chelmsley Wood	1,612	94.4%	1,110	92.0%	1,675	86.6%	1,179	77.5%	1,356	63.8%	1,022	55.6%	310	51.2%
E05001290	Kingshurst and Fordbridge	1,405	95.2%	1,099	91.9%	1,662	87.9%	1,237	75.9%	1,399	64.2%	1,078	57.6%	330	51.2%
E05001300	Smith's Wood	1,342	95.3%	1,054	92.5%	1,548	86.2%	1,272	79.8%	1,297	62.3%	1,053	56.6%	285	44.4%
E05001285	Blythe	1,800	96.7%	1,431	94.0%	1,901	89.3%	1,856	85.1%	1,742	78.1%	1,223	75.4%	392	67.5%
E05001289	Elmdon	1,939	96.6%	1,388	95.0%	1,635	90.7%	1,311	83.2%	1,336	75.4%	997	70.4%	325	61.9%
E05001292	Lyndon	1,829	96.0%	1,403	93.7%	1,791	89.0%	1,509	83.9%	1,502	73.0%	1,073	64.1%	349	58.4%
E05001294	Olton	2,302	96.2%	1,522	94.8%	1,845	91.5%	1,364	85.4%	1,203	76.5%	1,061	74.8%	423	69.5%
E05001295	St Alphege	2,322	96.6%	1,745	93.9%	2,018	90.7%	1,544	84.6%	1,004	76.3%	1,035	76.5%	492	77.0%
E05001296	Shirley East	1,817	96.5%	1,185	93.5%	1,682	92.0%	1,551	85.4%	1,179	76.3%	913	72.8%	424	70.0%
E05001297	Shirley South	2,348	96.0%	1,441	93.7%	1,637	91.2%	1,555	83.9%	1,296	77.7%	941	72.6%	367	72.1%
E05001298	Shirley West	1,895	96.7%	1,391	94.6%	1,628	90.4%	1,453	85.5%	1,588	78.1%	1,059	72.3%	343	66.0%
E05001299	Silhill	2,317	96.3%	1,297	94.3%	1,597	89.9%	1,524	78.3%	1,357	70.8%	993	72.3%	356	66.5%
	Total	33,662	96.6%	23,161	94.3%	29,282	90.6%	24,120	84.2%	21,310	73.5%	16,879	69.0%	6,238	64.9%

The following table shows uptake of the second dose of Covid-19 vaccine by electoral ward and age group.

2nd dose		70	80	60		50		40		30		20		0	10
Ward Code	Ward Name	Age 70+		Age 60-69		Age 50-59		Age 40-49		Age 30-39		Age 20-29		Age Under 20	
		Vaccinations	Coverage	Vaccinations	Coverage	Vaccinations	Coverage	Vaccinations	Coverage	Vaccinations	Coverage	Vaccinations	Coverage	Vaccinations	Coverage
E05001284	Bickenhill	1,923	96.2%	1,318	92.4%	1,839	89.1%	1,348	80.8%	1,137	65.2%	881	56.0%	171	28.8%
E05001288	Dorridge and Hockley Heath	1,956	98.3%	1,312	95.9%	1,665	93.9%	1,405	89.7%	837	78.2%	756	70.4%	192	35.4%
E05001291	Knowle	2,435	98.0%	1,368	95.5%	1,480	93.3%	1,298	90.0%	767	76.3%	600	67.1%	171	35.8%
E05001293	Meriden	2,391	97.7%	1,542	95.7%	1,926	93.4%	1,466	87.2%	907	75.6%	824	69.4%	180	32.8%
E05001286	Castle Bromwich	1,994	96.9%	1,498	94.5%	1,631	89.7%	1,014	82.1%	982	66.7%	721	56.6%	131	29.8%
E05001287	Chelmsley Wood	1,593	93.3%	1,088	90.1%	1,628	84.2%	1,088	71.5%	1,207	56.8%	817	44.4%	159	26.2%
E05001290	Kingshurst and Fordbridge	1,389	94.1%	1,083	90.6%	1,607	85.0%	1,156	71.0%	1,224	56.2%	862	46.0%	155	24.1%
E05001300	Smith's Wood	1,337	95.0%	1,031	90.4%	1,480	82.4%	1,186	74.5%	1,130	54.3%	856	46.0%	143	22.3%
E05001285	Blythe	1,793	96.3%	1,424	93.6%	1,877	88.2%	1,813	83.1%	1,600	71.7%	1,053	64.9%	175	30.1%
E05001289	Elmdon	1,919	95.6%	1,379	94.4%	1,616	89.7%	1,261	80.0%	1,217	68.7%	835	58.9%	139	26.5%
E05001292	Lyndon	1,806	94.8%	1,388	92.7%	1,759	87.4%	1,426	79.3%	1,354	65.8%	864	51.6%	171	28.6%
E05001294	Olton	2,289	95.6%	1,508	93.9%	1,802	89.4%	1,314	82.2%	1,089	69.2%	918	64.7%	184	30.2%
E05001295	St Alphege	2,318	96.4%	1,736	93.4%	1,999	89.9%	1,508	82.7%	946	71.9%	897	66.3%	230	36.0%
E05001296	Shirley East	1,812	96.3%	1,174	92.6%	1,650	90.3%	1,502	82.7%	1,108	71.7%	750	59.8%	180	29.7%
E05001297	Shirley South	2,335	95.4%	1,430	93.0%	1,615	90.0%	1,502	81.1%	1,190	71.4%	805	62.1%	165	32.4%
E05001298	Shirley West	1,879	95.9%	1,377	93.7%	1,597	88.7%	1,389	81.7%	1,454	71.6%	895	61.1%	153	29.4%
E05001299	Silhill	2,308	96.0%	1,284	93.4%	1,571	88.4%	1,458	74.9%	1,250	65.2%	856	62.3%	175	32.7%
	Total	33,477	96.1%	22,940	93.4%	28,742	89.0%	23,134	80.8%	19,399	66.9%	14,190	58.0%	2,874	29.9%

Increasing uptake in areas where fewer people have been vaccinated is a key local priority and area of focus for the local NHS & council, working with local communities. You can check if you are currently eligible for a vaccine and book an appointment at the following website: <https://www.nhs.uk/conditions/coronavirus-covid-19/coronavirus-vaccination/book-coronavirus-vaccination/>

Hospital Inpatients

At **23RD September**, there were **165** Covid positive inpatients in University Hospitals Birmingham NHS Foundation Trust hospitals, compared with **206** on **16TH September**. This includes **20** in Intensive Treatment / High Dependency Units, compared with **26** on **16TH September**. This will include a number of Solihull residents although the majority will be Birmingham residents (source: UHB Inpatient reports, **16TH** and **23RD September**).

University Hospitals Birmingham NHS Foundation Trust publish information several times a week at: <https://www.uhb.nhs.uk/coronavirus-staff/daily-statistics.htm>

Weekly Death Registrations and Occurrences (latest data published covers deaths occurred up to **10TH September** and registered up to **18TH September 2021**)

As of the week ending **10TH September**, there have been **680** deaths of Solihull residents that mention COVID-19. **3** COVID-19 deaths occurred in the latest week.

Further information is available on the Office for National Statistics death registrations page.

Further Information

<https://coventry-city-council.github.io/covid-19/dashboard/>

This dashboard, developed by Coventry City Council, contains a variety of useful information and allows users to compare rates in Solihull with other areas.

The next data summary will be published on **Friday 1ST October**.

24TH September 2021