

COVID-19 – Solihull Data Summary, 5th November 2021

Summary

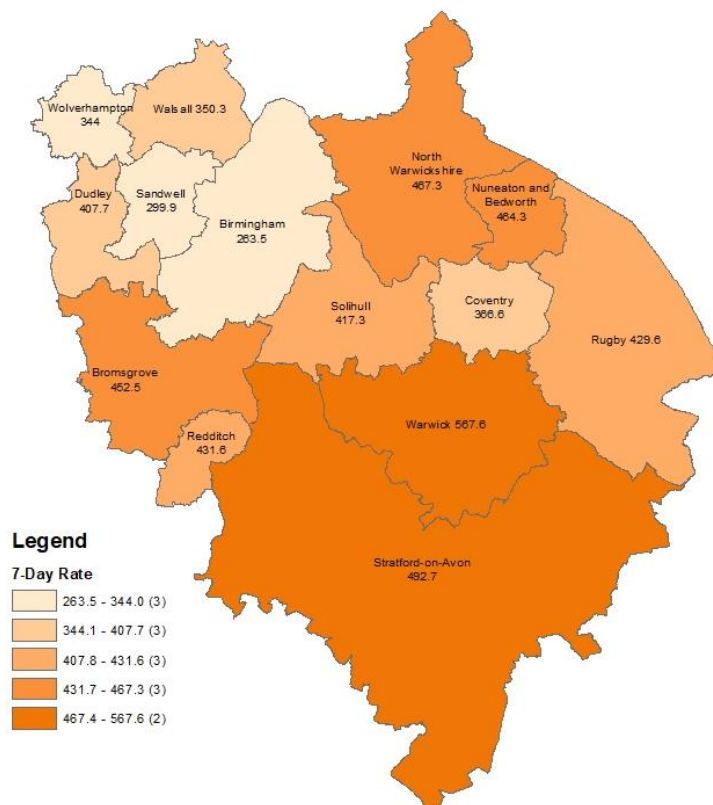
- The number of new cases was **903** in the 7 days to **29th October**, a rate of **417.3** per 100,000 population, a decrease of **20%** on the previous 7 days.
- Information about Covid vaccine uptake by age group and electoral ward is given in this bulletin.
- At **3rd November**, there were **208** Covid positive inpatients in University Hospitals Birmingham NHS Foundation Trust hospitals, compared with **222** on **27th October**.
- There was **1** Covid related death of a Solihull resident in **w/e 22nd October** (deaths registered up to **30th October**). (Source: ONS).

Weekly Cases and Rates

COVID-19 cases are identified by taking specimens from people and sending them to laboratories around the UK to be tested. If the test is positive, this is referred to as a lab-confirmed case.

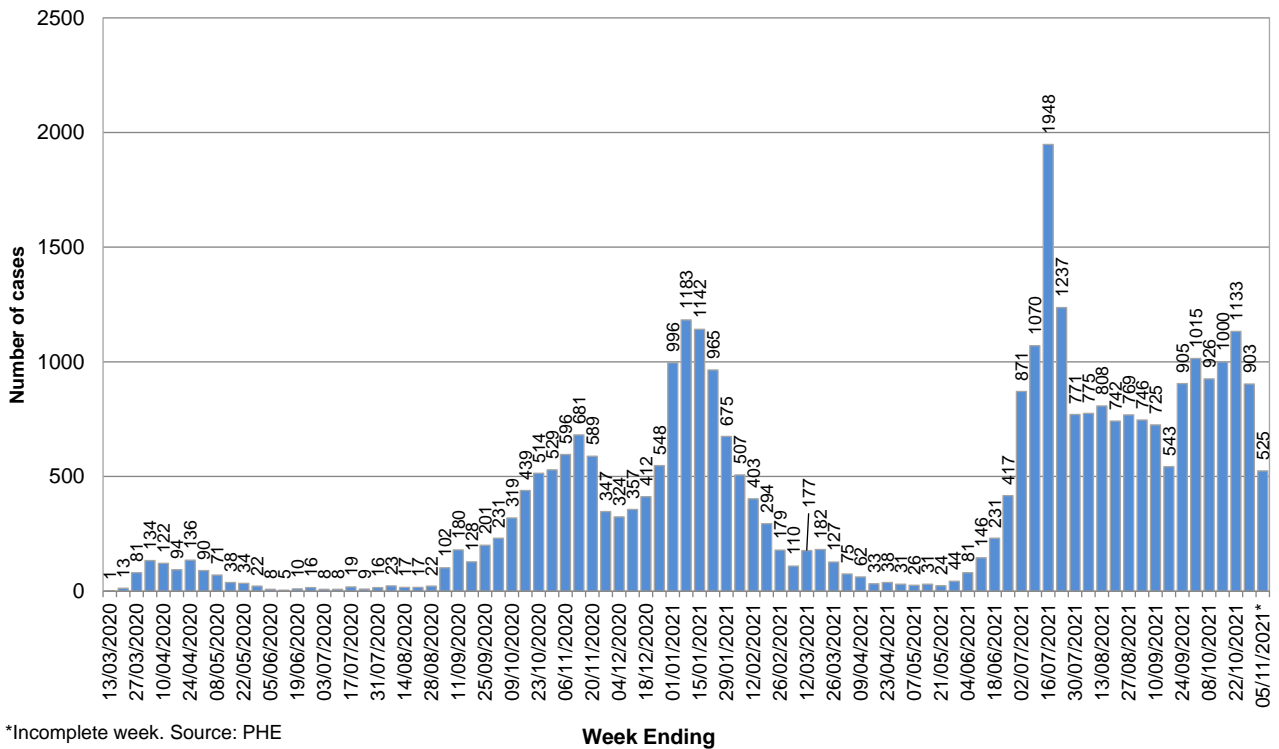
New Cases

In the 7 days to **29th October**, Solihull had **903** new lab-confirmed cases, a rate of **417.3** per 100,000 population. This was a decrease of **20%** on the previous 7 days.



The breakdown of cases in Solihull by week over time is shown below. It should be noted that case numbers prior to May 2020 are not directly comparable as there was much more restricted access to testing at that time.

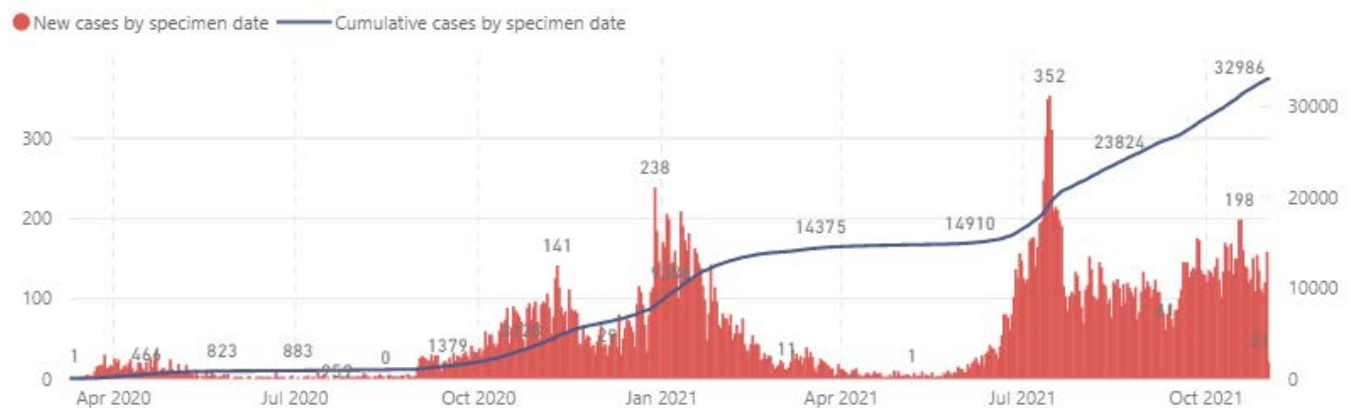
Number of weekly Covid-19 cases in Solihull since 13 March (week ending)



*Incomplete week. Source: PHE

Total Cases

The total number of lab-confirmed cases in Solihull since the start of the pandemic was **32986** at **2nd November**. The cumulative number of cases over time is shown in the graph below; the full-sized version of this chart can be found at <https://coventry-city-council.github.io/covid-19/dashboard/#solihull>



Number of New Cases by Ward

The table below shows the number of new lab-confirmed cases by ward for the 14 days **between 18TH October and 31st October 2021**. The number of new cases in the previous 14 days is also shown for comparison. It should be noted that, as electoral wards are relatively small areas, the wards with highest and lowest number of cases are liable to change.

Ward Name	Number of cases 4 th October – 17 th October	Number of cases 18 th October – 31 st October
Bickenhill	140	122
Blythe	171	172
Castle Bromwich	131	90
Chelmsley Wood	154	126
Dorridge & Hockley Heath	119	85
Elmdon	69	93
Knowle	114	102
Kingshurst & Fordbridge	138	120
Lyndon	84	123
Meriden	119	106
Olton	97	117
Silhill	93	118
Shirley East	102	155
Shirley South	105	121
Shirley West	135	109
St Alphege	77	120
Smith's Wood	122	84
Total	1970	1963

Source: Public Health England Data, lab confirmed cases

Reproduction Number (Rt)

The reproduction number is the number of people that one infected person will pass on a virus to, on average. If the reproduction number is higher than one, then the number of cases increase exponentially. If the number is lower the disease will eventually stop spreading, as not enough new people are being infected to sustain the outbreak. The current reproduction number (Rt) for the Midlands region can be found at <https://www.gov.uk/guidance/the-r-number-in-the-uk>.

Vaccinations

The table below shows uptake of the first dose of the Covid-19 vaccine by age group and electoral ward at 01 November 2021. Data is on Birmingham and Solihull CCG registered patients who are resident within Solihull.

Ward Name	Age 70+		Age 60-69		Age 50-59		Age 40-49		Age 30-39		Age 20-29		Age Under 20	
	Vaccinations	Coverage	Vaccinations	Coverage	Vaccinations	Coverage	Vaccinations	Coverage	Vaccinations	Coverage	Vaccinations	Coverage	Vaccinations	Coverage
Bickenhill	1,944	96.8%	1,347	93.8%	1,868	90.4%	1,434	85.7%	1,289	73.7%	1,059	67.8%	502	41.9%
Dorridge and Hockley Heath	1,954	98.4%	1,340	96.5%	1,340	95.1%	1,435	92.0%	897	83.6%	876	81.6%	613	53.2%
Knowle	2,440	98.5%	1,356	96.2%	1,356	94.4%	1,338	91.4%	828	82.5%	683	77.7%	557	54.1%
Meriden	2,404	98.2%	1,540	96.4%	1,540	94.6%	1,521	90.5%	1,011	83.4%	974	82.3%	585	52.9%
Castle Bromwich	2,010	97.2%	1,514	95.2%	1,514	91.6%	1,065	86.7%	1,088	74.3%	889	69.8%	327	36.6%
Chelmsley Wood	1,614	94.4%	1,125	92.0%	1,125	86.6%	1,196	78.2%	1,367	64.5%	1,036	56.8%	423	33.1%
Kingshurst and Fordbridge	1,406	95.4%	1,098	92.0%	1,098	87.7%	1,226	76.0%	1,421	64.9%	1,085	58.1%	471	33.1%
Smith's Wood	1,336	95.1%	1,058	92.7%	1,058	86.5%	1,264	79.4%	1,320	63.4%	1,068	57.6%	386	25.5%
Blythe	1,812	96.7%	1,425	94.1%	1,425	89.4%	1,849	85.2%	1,759	78.6%	1,241	76.3%	523	39.1%
Elmdon	1,939	96.8%	1,395	94.8%	1,395	91.0%	1,315	83.0%	1,341	75.8%	992	71.2%	408	37.5%
Lyndon	1,819	96.1%	1,406	94.0%	1,406	89.1%	1,511	84.6%	1,525	73.7%	1,092	65.2%	441	35.3%
Olton	2,292	96.0%	1,531	94.7%	1,531	91.6%	1,369	85.0%	1,232	77.7%	1,065	75.8%	640	55.2%
St Alphege	2,336	96.6%	1,750	94.0%	1,750	90.7%	1,542	84.8%	1,022	77.1%	1,014	76.9%	627	46.0%
Shirley East	1,824	96.6%	1,197	93.5%	1,197	91.9%	1,553	85.5%	1,211	77.7%	914	74.1%	538	40.7%
Shirley South	2,344	96.1%	1,430	93.6%	1,430	91.3%	1,544	83.8%	1,307	78.5%	954	74.1%	460	44.8%
Shirley West	1,904	96.6%	1,401	94.5%	1,401	90.3%	1,454	85.3%	1,593	78.9%	1,087	73.6%	558	50.1%
Silhill	2,336	96.4%	1,306	94.6%	1,306	89.7%	1,539	78.4%	1,356	71.2%	1,006	73.7%	494	41.5%
Total	33,714	96.7%	23,219	94.4%	23,740	90.7%	24,155	84.4%	21,567	74.3%	17,035	70.1%	8,553	94.4%

The following table shows uptake of the second dose of Covid-19 vaccine by electoral ward and age group.

Ward Name	Age 70+		Age 60-69		Age 50-59		Age 40-49		Age 30-39		Age 20-29		Age Under 20	
	Vaccinations	Coverage	Vaccinations	Coverage	Vaccinations	Coverage	Vaccinations	Coverage	Vaccinations	Coverage	Vaccinations	Coverage	Vaccinations	Coverage
Bickenhill	1,930	96.1%	1,331	92.7%	1,834	88.7%	1,379	82.4%	1,188	68.0%	929	59.5%	175	14.6%
Dorridge and Hockley Heath	1,954	98.4%	1,334	96.0%	1,659	94.3%	1,415	90.8%	858	80.0%	811	75.6%	204	17.7%
Knowle	2,430	98.1%	1,349	95.7%	1,479	93.5%	1,319	90.1%	787	78.4%	633	72.0%	167	16.2%
Meriden	2,395	97.8%	1,529	95.7%	1,940	93.6%	1,478	88.0%	963	79.5%	879	74.3%	199	18.0%
Castle Bromwich	2,006	97.0%	1,506	94.7%	1,630	89.9%	1,022	83.2%	1,004	68.6%	776	60.9%	142	15.9%
Chelmsley Wood	1,597	93.4%	1,104	90.3%	1,625	84.4%	1,111	72.6%	1,226	57.9%	859	47.1%	168	13.1%
Kingshurst and Fordbridge	1,391	94.4%	1,085	90.9%	1,620	85.2%	1,163	72.1%	1,269	57.9%	920	49.3%	173	12.1%
Smith's Wood	1,332	94.8%	1,034	90.6%	1,504	83.1%	1,191	74.9%	1,171	56.2%	909	49.0%	154	10.2%
Blythe	1,806	96.4%	1,421	93.8%	1,878	88.4%	1,812	83.5%	1,651	73.8%	1,128	69.4%	197	14.7%
Elmdon	1,919	95.8%	1,387	94.3%	1,610	89.9%	1,277	80.6%	1,249	70.6%	892	64.0%	160	14.7%
Lyndon	1,800	95.1%	1,392	93.1%	1,770	87.9%	1,441	80.7%	1,394	67.3%	956	57.0%	176	14.1%
Olton	2,285	95.7%	1,518	93.9%	1,793	89.9%	1,331	82.6%	1,138	71.8%	961	68.4%	195	16.8%
St Alphege	2,334	96.5%	1,741	93.6%	1,995	89.9%	1,511	83.1%	977	73.7%	918	69.7%	241	17.7%
Shirley East	1,821	96.4%	1,186	92.7%	1,651	90.3%	1,508	83.0%	1,139	73.1%	816	66.1%	201	15.2%
Shirley South	2,334	95.7%	1,421	93.1%	1,629	90.3%	1,502	81.5%	1,219	73.2%	872	67.8%	172	16.7%
Shirley West	1,891	95.9%	1,392	93.9%	1,588	88.9%	1,395	81.9%	1,492	73.9%	967	65.5%	168	15.1%
Silhill	2,329	96.2%	1,294	93.8%	1,582	88.4%	1,485	75.6%	1,283	67.3%	905	66.3%	178	15.0%
Total	33,554	96.2%	23,024	93.6%	28,787	89.2%	23,340	81.5%	20,008	68.9%	15,131	62.3%	3,070	15.0%

Increasing uptake in areas where fewer people have been vaccinated is a key local priority and area of focus for the local NHS & council, working with local communities. You can check if you are currently eligible for a vaccine and book an appointment at the following website: <https://www.nhs.uk/conditions/coronavirus-covid-19/coronavirus-vaccination/book-coronavirus-vaccination/>

Hospital Inpatients

At **3rd November**, there were **208** Covid positive inpatients in University Hospitals Birmingham NHS Foundation Trust hospitals, compared with **222** on **27th October**. This includes **30** in Intensive Treatment / High Dependency Units, compared with **30** on **27th October**. This will include a number of Solihull residents although the majority will be Birmingham residents (source: UHB Inpatient reports, **27th October** and **3rd November**)

University Hospitals Birmingham NHS Foundation Trust publish information several times a week at:
<https://www.uhb.nhs.uk/coronavirus-staff/daily-statistics.htm>

Weekly Death Registrations and Occurrences (latest data published covers deaths occurred up to **22nd October** and registered up to **30th October 2021**)

As of the week ending **22nd October**, there have been **697** deaths of Solihull residents that mention COVID-19. **1** COVID-19 death(s) occurred in the latest week.

Further information is available on the Office for National Statistics death registrations page.

Further Information

<https://coventry-city-council.github.io/covid-19/dashboard/>

This dashboard, developed by Coventry City Council, contains a variety of useful information and allows users to compare rates in Solihull with other areas.

The next data summary will be published on **Friday 12th November**.

5th November 2021