

COVID-19 – Solihull Data Summary, 12th November 2021

Summary

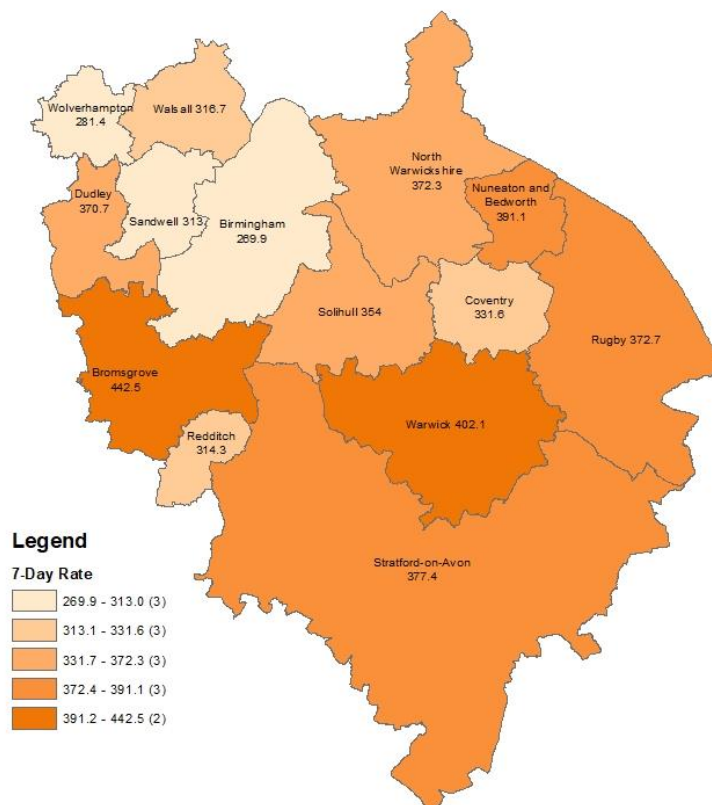
- The number of new cases was **766** in the 7 days to **5th November**, a rate of **354.0** per 100,000 population, a decrease of **16%** on the previous 7 days.
- Information about Covid vaccine uptake by age group and electoral ward is given in this bulletin.
- At **10th November**, there were **171** Covid positive inpatients in University Hospitals Birmingham NHS Foundation Trust hospitals, compared with **208** on **3rd November**.
- There was **1** Covid related death(s) of a Solihull resident in **w/e 29th October** (deaths registered up to **6th November**). (Source: ONS).

Weekly Cases and Rates

COVID-19 cases are identified by taking specimens from people and sending them to laboratories around the UK to be tested. If the test is positive, this is referred to as a lab-confirmed case.

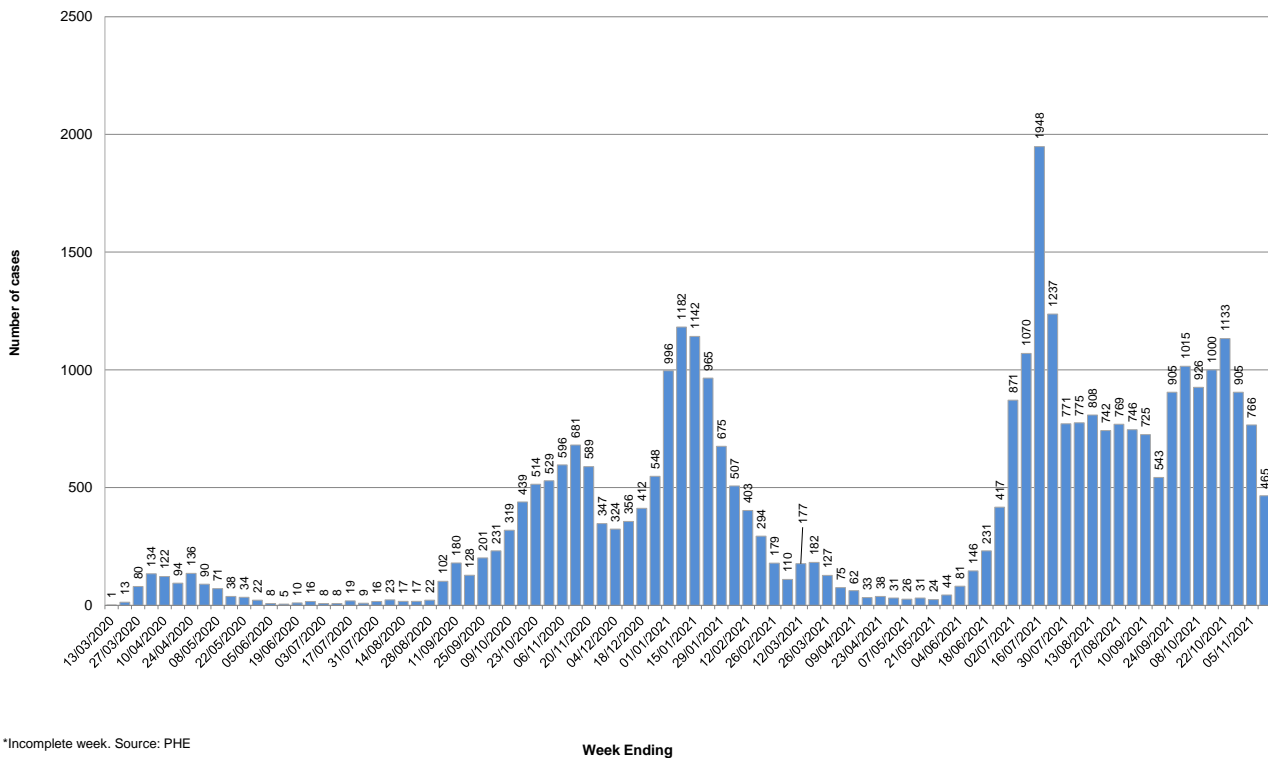
New Cases

In the 7 days to **5th November**, Solihull had **766** new lab-confirmed cases, a rate of **354.0** per 100,000 population. This was a decrease of **16%** on the previous 7 days.



The breakdown of cases in Solihull by week over time is shown below. It should be noted that case numbers prior to May 2020 are not directly comparable as there was much more restricted access to testing at that time.

Number of weekly Covid-19 cases in Solihull since 13 March (week ending)

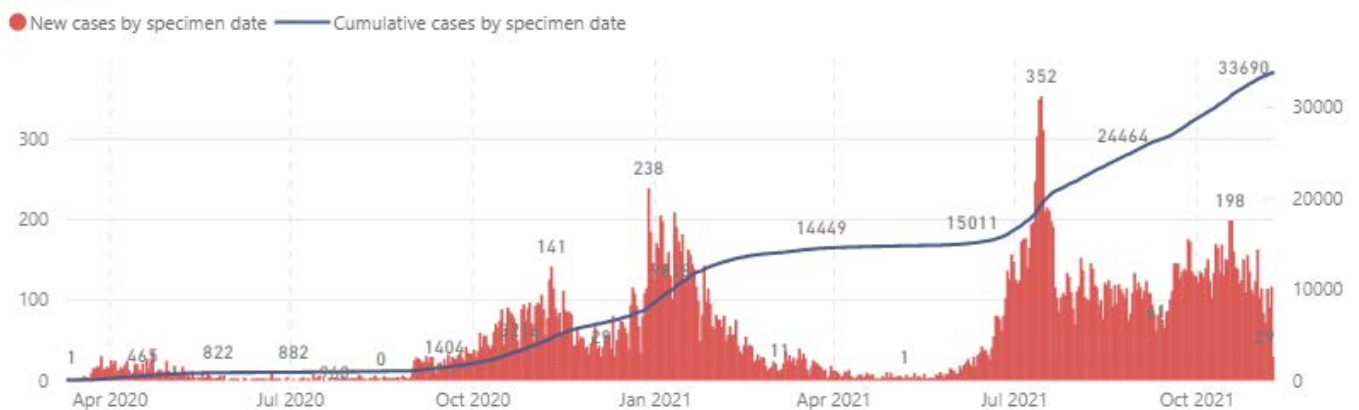


*Incomplete week. Source: PHE

Total Cases

The total number of lab-confirmed cases in Solihull since the start of the pandemic was **33,690** on **9th November**. The cumulative number of cases over time is shown in the graph below; the full-sized version of this chart can be found at <https://coventry-city-council.github.io/covid-19/dashboard/#solihull> (note that is continually updated and chart below is at a point in time – run late on **11th November**).

All ages



Number of New Cases by Ward

The table below shows the number of new lab-confirmed cases by ward for the 14 days **between 27th October and 9th November 2021**. The number of new cases in the previous 14 days is also shown for comparison. It should be noted that, as electoral wards are relatively small areas, the wards with highest and lowest number of cases are liable to change.

Ward Name	Number of cases 13 th October – 26 th October	Number of cases 27 th October – 9 th November
Bickenhill	137	73
Blythe	185	145
Castle Bromwich	107	83
Chelmsley Wood	145	91
Dorridge & Hockley Heath	112	61
Elmdon	90	102
Knowle	101	84
Kingshurst & Fordbridge	134	84
Lyndon	120	87
Meriden	110	91
Olton	116	110
Silhill	115	110
Shirley East	137	110
Shirley South	146	76
Shirley West	131	93
St Alphege	95	110
Smith's Wood	87	104
Total	2068	1614

Source: Public Health England Data, lab confirmed cases

Reproduction Number (Rt)

The reproduction number is the number of people that one infected person will pass on a virus to, on average. If the reproduction number is higher than one, then the number of cases increase exponentially. If the number is lower the disease will eventually stop spreading, as not enough new people are being infected to sustain the outbreak. The current reproduction number (Rt) for the Midlands region can be found at <https://www.gov.uk/guidance/the-r-number-in-the-uk>.

Vaccinations

The table below shows uptake of the first dose of the Covid-19 vaccine by age group and electoral ward at **8th November 2021**. Data is on Birmingham and Solihull CCG registered patients who are resident within Solihull.

Ward Name	Age 70+		Age 60-69		Age 50-59		Age 40-49		Age 30-39		Age 20-29		Age Under 20	
	Vaccinations	Coverage	Vaccinations	Coverage	Vaccinations	Coverage	Vaccinations	Coverage	Vaccinations	Coverage	Vaccinations	Coverage	Vaccinations	Coverage
Bickenhill	1,940	96.8%	1,350	93.8%	1,871	90.3%	1,429	85.6%	1,292	73.7%	1,058	68.0%	524	43.6%
Dorridge and Hockley Heath	1,959	98.4%	1,338	96.5%	1,677	95.1%	1,432	92.1%	902	83.8%	877	82.1%	646	56.0%
Knowle	2,437	98.5%	1,359	96.2%	1,495	94.4%	1,338	91.3%	828	82.6%	684	78.0%	577	56.1%
Meriden	2,403	98.2%	1,542	96.4%	1,961	94.7%	1,522	90.6%	1,014	83.7%	971	82.1%	592	53.8%
Castle Bromwich	2,012	97.2%	1,516	95.2%	1,669	91.7%	1,059	86.7%	1,091	74.3%	894	70.1%	451	50.1%
Chelmsley Wood	1,613	94.3%	1,125	92.0%	1,667	86.6%	1,200	78.2%	1,372	64.6%	1,038	57.0%	430	33.8%
Kingshurst and Fordbridge	1,408	95.5%	1,097	92.0%	1,674	87.6%	1,228	76.2%	1,423	65.0%	1,090	58.2%	485	34.1%
Smith's Wood	1,336	95.1%	1,060	92.7%	1,565	86.6%	1,261	79.4%	1,328	63.6%	1,070	57.7%	456	29.9%
Blythe	1,814	96.6%	1,426	94.2%	1,899	89.4%	1,841	85.1%	1,764	78.9%	1,244	76.6%	588	44.1%
Elmdon	1,943	96.7%	1,390	94.8%	1,632	91.0%	1,317	83.0%	1,349	76.2%	995	71.6%	443	40.7%
Lyndon	1,815	96.1%	1,406	94.1%	1,796	89.1%	1,511	84.7%	1,535	73.8%	1,092	65.2%	530	42.5%
Olton	2,292	96.1%	1,528	94.6%	1,827	91.6%	1,364	85.0%	1,231	77.7%	1,067	75.9%	662	57.2%
St Alphege	2,337	96.6%	1,747	94.0%	2,013	90.7%	1,542	84.9%	1,015	77.1%	1,015	77.2%	814	59.8%
Shirley East	1,821	96.5%	1,196	93.6%	1,685	91.8%	1,547	85.5%	1,214	78.0%	913	73.9%	678	51.2%
Shirley South	2,346	96.2%	1,432	93.7%	1,644	91.3%	1,548	83.9%	1,307	78.6%	956	74.5%	542	52.8%
Shirley West	1,910	96.7%	1,397	94.6%	1,613	90.3%	1,457	85.5%	1,595	79.2%	1,080	73.7%	587	52.8%
Silhill	2,326	96.4%	1,309	94.6%	1,606	89.8%	1,542	78.5%	1,359	71.2%	1,013	74.3%	542	45.5%
Total	33,712	96.7%	23,218	94.4%	29,294	90.7%	24,138	84.4%	21,619	74.5%	17,057	70.3%	9,547	46.7%

The following table shows uptake of the second dose of Covid-19 vaccine by electoral ward and age group.

Ward Name	Age 70+		Age 60-69		Age 50-59		Age 40-49		Age 30-39		Age 20-29		Age Under 20	
	Vaccinations	Coverage	Vaccinations	Coverage	Vaccinations	Coverage	Vaccinations	Coverage	Vaccinations	Coverage	Vaccinations	Coverage	Vaccinations	Coverage
Bickenhill	1,926	96.1%	1,335	92.8%	1,838	88.7%	1,374	82.3%	1,194	68.1%	933	60.0%	179	14.9%
Dorridge and Hockley Heath	1,959	98.4%	1,334	96.2%	1,663	94.3%	1,412	90.8%	865	80.3%	814	76.2%	208	18.0%
Knowle	2,428	98.1%	1,353	95.8%	1,481	93.6%	1,319	90.0%	789	78.7%	639	72.9%	169	16.4%
Meriden	2,394	97.9%	1,531	95.7%	1,940	93.7%	1,480	88.1%	968	79.9%	882	74.6%	196	17.8%
Castle Bromwich	2,009	97.1%	1,507	94.7%	1,636	89.9%	1,018	83.4%	1,008	68.7%	784	61.5%	149	16.5%
Chelmsley Wood	1,596	93.3%	1,104	90.3%	1,626	84.4%	1,119	72.9%	1,231	58.0%	863	47.4%	168	13.2%
Kingshurst and Fordbridge	1,393	94.4%	1,084	90.9%	1,629	85.3%	1,165	72.3%	1,270	58.0%	932	49.8%	174	12.2%
Smith's Wood	1,333	94.9%	1,038	90.8%	1,507	83.4%	1,192	75.1%	1,181	56.6%	914	49.3%	152	10.0%
Blythe	1,808	96.3%	1,420	93.9%	1,879	88.5%	1,806	83.5%	1,659	74.2%	1,139	70.1%	200	15.0%
Elmdon	1,923	95.7%	1,382	94.3%	1,613	89.9%	1,280	80.7%	1,257	71.0%	900	64.7%	163	15.0%
Lyndon	1,800	95.3%	1,392	93.2%	1,773	87.9%	1,443	80.9%	1,411	67.8%	974	58.1%	179	14.4%
Olton	2,284	95.7%	1,517	93.9%	1,797	90.1%	1,333	83.1%	1,142	72.1%	969	69.0%	206	17.8%
St Alphege	2,336	96.6%	1,739	93.6%	1,998	90.0%	1,511	83.2%	971	73.8%	920	70.0%	244	17.9%
Shirley East	1,820	96.4%	1,184	92.6%	1,657	90.3%	1,506	83.2%	1,143	73.4%	822	66.6%	209	15.8%
Shirley South	2,336	95.8%	1,425	93.2%	1,628	90.4%	1,508	81.8%	1,222	73.5%	870	67.8%	175	17.0%
Shirley West	1,896	96.0%	1,389	94.0%	1,588	88.9%	1,402	82.2%	1,498	74.4%	968	66.0%	174	15.6%
Silhill	2,319	96.1%	1,297	93.7%	1,581	88.4%	1,490	75.9%	1,288	67.5%	923	67.7%	179	15.0%
Total	33,560	96.2%	23,031	93.6%	28,834	89.2%	23,358	81.7%	20,097	69.2%	15,246	62.8%	3,124	15.3%

Increasing uptake in areas where fewer people have been vaccinated is a key local priority and area of focus for the local NHS & council, working with local communities. You can check if you are currently eligible for a vaccine and book an appointment at the following website: <https://www.nhs.uk/conditions/coronavirus-covid-19/coronavirus-vaccination/book-coronavirus-vaccination/>

Hospital Inpatients

At **10th November**, there were **171** Covid positive inpatients in University Hospitals Birmingham NHS Foundation Trust hospitals, compared with **208** on **3rd November**. This includes **25** in Intensive Treatment / High Dependency Units, compared with **30** on **3rd November**. This will include a number of Solihull residents although the majority will be Birmingham residents (source: UHB Inpatient reports, **3rd November** and **10th November**)

University Hospitals Birmingham NHS Foundation Trust publish information several times a week at: <https://www.uhb.nhs.uk/coronavirus-staff/daily-statistics.htm>

Weekly Death Registrations and Occurrences (latest data published covers deaths occurred up to **29th October** and registered up to **6th November 2021**)

As of the week ending **29th October**, there have been **700** deaths of Solihull residents that mention COVID-19. **1** COVID-19 death(s) occurred in the latest week.

Further information is available on the Office for National Statistics death registrations page.

Further Information

<https://coventry-city-council.github.io/covid-19/dashboard/>

This dashboard, developed by Coventry City Council, contains a variety of useful information and allows users to compare rates in Solihull with other areas.

The next data summary will be published on **Friday 19th November**.

12th November 2021