

COVID-19 – Solihull Data Summary, 19th November 2021

Summary

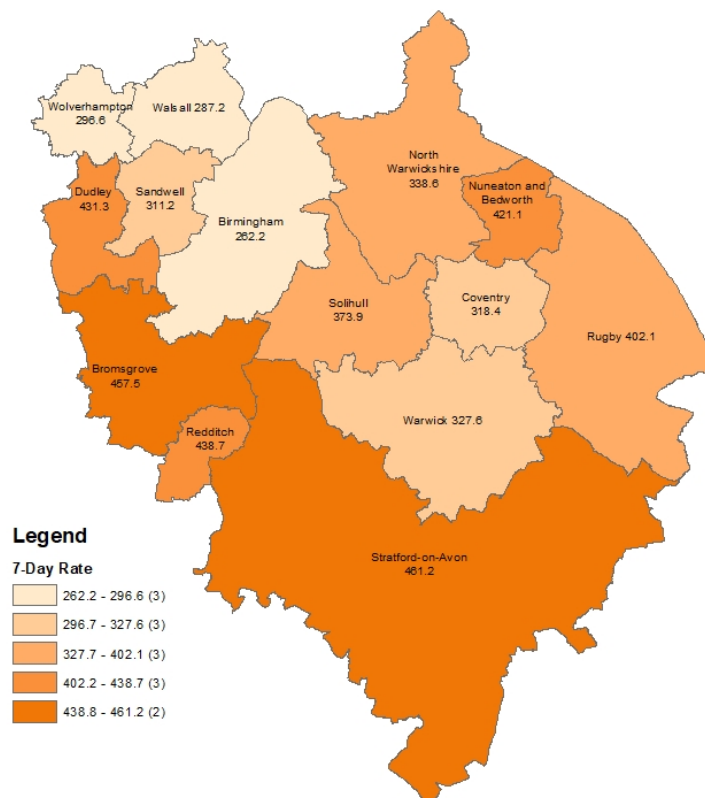
- The number of new cases was **809** in the 7 days to **12th November**, a rate of **373.9** per 100,000 population, an increase of **6%** on the previous 7 days.
- Information about Covid vaccine uptake by age group and electoral ward is given in this bulletin.
- At **18th November**, there were **178** Covid positive inpatients in University Hospitals Birmingham NHS Foundation Trust hospitals, compared with **171** on **10th November**.
- There were **2** Covid related death(s) of a Solihull resident in **w/e 5th November** (deaths registered up to **13th November**). (Source: ONS).

Weekly Cases and Rates

COVID-19 cases are identified by taking specimens from people and sending them to laboratories around the UK to be tested. If the test is positive, this is referred to as a lab-confirmed case.

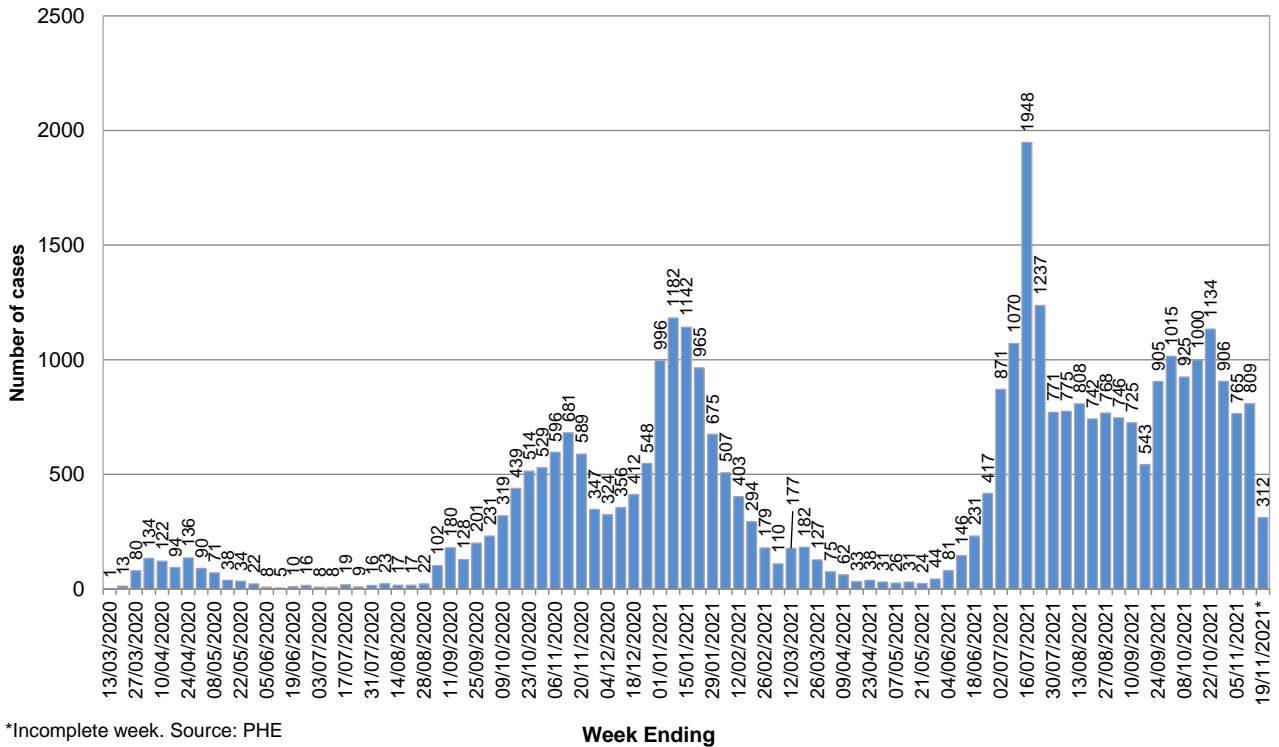
New Cases

In the 7 days to **12th November**, Solihull had **809** new lab-confirmed cases, a rate of **373.9** per 100,000 population. This was an increase of **6%** on the previous 7 days.



The breakdown of cases in Solihull by week over time is shown below. It should be noted that case numbers prior to May 2020 are not directly comparable as there was much more restricted access to testing at that time.

Number of weekly Covid-19 cases in Solihull since 13 March (week ending)

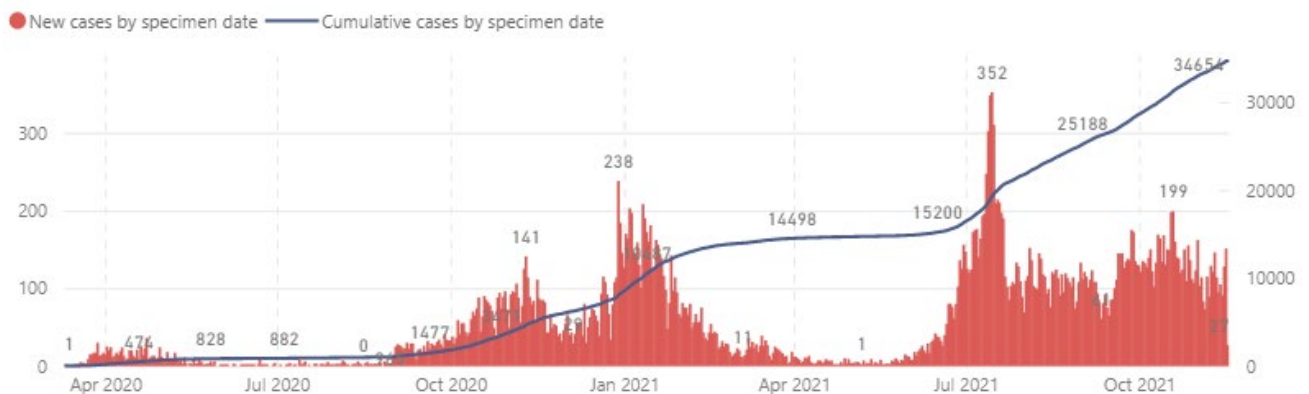


*Incomplete week. Source: PHE

Total Cases

The total number of lab-confirmed cases in Solihull since the start of the pandemic was **34,654** on **17th November**. The cumulative number of cases over time is shown in the graph below; the full-sized version of this chart can be found at <https://coventry-city-council.github.io/covid-19/dashboard/#solihull> (note that is continually updated and chart below is at a point in time – run late on **18th November**).

All ages



Number of New Cases by Ward

The table below shows the number of new lab-confirmed cases by ward for the 14 days **between 2nd November and 15th November 2021**. The number of new cases in the previous 14 days is also shown for comparison. It should be noted that, as electoral wards are relatively small areas, the wards with highest and lowest number of cases are liable to change.

Ward Name	Number of cases 19 th October – 1 st November	Number of cases 2 nd November – 15 th November
Bickenhill	116	58
Blythe	178	133
Castle Bromwich	92	86
Chelmsley Wood	115	81
Dorridge & Hockley Heath	84	59
Elmdon	97	101
Knowle	92	83
Kingshurst & Fordbridge	117	77
Lyndon	123	80
Meriden	105	76
Olton	120	74
Silhill	107	129
Shirley East	156	78
Shirley South	118	76
Shirley West	111	96
St Alphege	117	91
Smith's Wood	87	93
Total	1935	1471

Source: Public Health England Data, lab confirmed cases

Reproduction Number (Rt)

The reproduction number is the number of people that one infected person will pass on a virus to, on average. If the reproduction number is higher than one, then the number of cases increase exponentially. If the number is lower the disease will eventually stop spreading, as not enough new people are being infected to sustain the outbreak. The current reproduction number (Rt) for the Midlands region can be found at <https://www.gov.uk/guidance/the-r-number-in-the-uk>.

Vaccinations

The table below shows uptake of the first dose of the Covid-19 vaccine by age group and electoral ward at **15th November 2021**. Data is on Birmingham and Solihull CCG registered patients who are resident within Solihull.

Ward Name	Age 70+		Age 60-69		Age 50-59		Age 40-49		Age 30-39		Age 20-29		Age Under 20	
	Vaccinations	Coverage	Vaccinations	Coverage	Vaccinations	Coverage	Vaccinations	Coverage	Vaccinations	Coverage	Vaccinations	Coverage	Vaccinations	Coverage
Bickenhill	1,941	96.8%	1,352	93.8%	1,873	90.4%	1,430	85.6%	1,291	73.6%	1,063	68.4%	567	47.1%
Dorridge and Hockley Heath	1,963	98.4%	1,334	96.5%	1,677	95.1%	1,433	92.0%	908	83.8%	880	82.8%	712	62.0%
Knowle	2,438	98.4%	1,357	96.2%	1,495	94.4%	1,334	91.4%	830	82.5%	684	78.3%	631	61.5%
Meriden	2,406	98.2%	1,542	96.4%	1,960	94.7%	1,522	90.6%	1,022	83.9%	971	82.4%	643	58.6%
Castle Bromwich	2,013	97.2%	1,520	95.3%	1,667	91.7%	1,057	86.9%	1,095	74.5%	897	70.5%	465	51.8%
Chelmsley Wood	1,615	94.4%	1,129	92.0%	1,660	86.6%	1,199	78.4%	1,372	64.7%	1,040	57.3%	458	36.0%
Kingshurst and Fordbridge	1,410	95.6%	1,092	91.8%	1,675	87.8%	1,234	76.4%	1,421	65.0%	1,103	58.6%	522	36.7%
Smith's Wood	1,331	95.1%	1,063	92.8%	1,561	86.5%	1,265	79.5%	1,335	63.9%	1,064	57.6%	548	35.9%
Blythe	1,822	96.7%	1,418	94.2%	1,896	89.4%	1,846	85.2%	1,757	78.8%	1,242	76.6%	769	57.6%
Elmdon	1,945	96.8%	1,388	94.8%	1,632	90.8%	1,322	83.1%	1,347	76.1%	999	71.7%	567	51.9%
Lyndon	1,812	96.1%	1,405	94.0%	1,797	89.0%	1,510	84.6%	1,534	74.0%	1,096	65.5%	621	49.8%
Olton	2,295	96.1%	1,519	94.5%	1,823	91.6%	1,366	85.1%	1,229	77.8%	1,068	76.2%	711	61.6%
St Alphege	2,337	96.6%	1,749	94.0%	2,010	90.6%	1,547	84.8%	1,015	77.2%	1,020	77.9%	907	66.4%
Shirley East	1,823	96.5%	1,195	93.6%	1,692	91.9%	1,543	85.6%	1,216	78.1%	922	74.4%	751	56.8%
Shirley South	2,347	96.2%	1,432	93.7%	1,642	91.2%	1,543	83.9%	1,317	79.0%	953	74.7%	627	61.0%
Shirley West	1,904	96.6%	1,394	94.5%	1,613	90.4%	1,458	85.5%	1,593	79.4%	1,086	74.0%	634	57.1%
Silhill	2,323	96.4%	1,315	94.7%	1,606	89.8%	1,542	78.5%	1,366	71.4%	1,026	74.7%	678	56.6%
Total	33,725	96.7%	23,204	94.4%	29,279	90.7%	24,151	84.4%	21,648	74.6%	17,114	70.6%	10,811	52.9%

The following table shows uptake of the second dose of Covid-19 vaccine by electoral ward and age group.

Ward Name	Age 70+		Age 60-69		Age 50-59		Age 40-49		Age 30-39		Age 20-29		Age Under 20	
	Vaccinations	Coverage	Vaccinations	Coverage	Vaccinations	Coverage	Vaccinations	Coverage	Vaccinations	Coverage	Vaccinations	Coverage	Vaccinations	Coverage
Bickenhill	1,927	96.1%	1,338	92.9%	1,840	88.8%	1,377	82.5%	1,200	68.5%	942	60.6%	179	14.9%
Dorridge and Hockley Heath	1,963	98.4%	1,330	96.2%	1,664	94.4%	1,413	90.8%	875	80.8%	817	76.9%	209	18.2%
Knowle	2,429	98.0%	1,351	95.7%	1,485	93.8%	1,316	90.1%	791	78.6%	638	73.0%	176	17.2%
Meriden	2,398	97.9%	1,531	95.7%	1,941	93.8%	1,480	88.1%	979	80.4%	886	75.1%	206	18.8%
Castle Bromwich	2,010	97.1%	1,511	94.7%	1,635	89.9%	1,021	83.9%	1,015	69.1%	791	62.1%	154	17.1%
Chelmsley Wood	1,597	93.4%	1,108	90.3%	1,619	84.5%	1,121	73.3%	1,235	58.2%	865	47.6%	169	13.3%
Kingshurst and Fordbridge	1,396	94.6%	1,079	90.7%	1,631	85.5%	1,172	72.5%	1,268	58.0%	961	51.1%	173	12.2%
Smith's Wood	1,328	94.9%	1,042	90.9%	1,507	83.5%	1,196	75.1%	1,192	57.1%	917	49.6%	154	10.1%
Blythe	1,817	96.4%	1,413	93.9%	1,875	88.4%	1,812	83.7%	1,661	74.5%	1,145	70.6%	205	15.3%
Elmdon	1,928	95.9%	1,379	94.2%	1,613	89.8%	1,288	81.0%	1,260	71.2%	908	65.2%	163	14.9%
Lyndon	1,797	95.3%	1,392	93.2%	1,777	88.1%	1,442	80.8%	1,416	68.3%	984	58.8%	182	14.6%
Olton	2,287	95.7%	1,508	93.8%	1,796	90.3%	1,338	83.4%	1,149	72.8%	972	69.3%	207	17.9%
St Alphege	2,336	96.6%	1,740	93.5%	1,996	90.0%	1,521	83.3%	973	74.0%	926	70.7%	244	17.9%
Shirley East	1,822	96.5%	1,183	92.6%	1,664	90.4%	1,503	83.4%	1,148	73.8%	829	66.9%	211	15.9%
Shirley South	2,336	95.8%	1,426	93.3%	1,626	90.3%	1,507	81.9%	1,235	74.0%	869	68.1%	177	17.2%
Shirley West	1,890	95.9%	1,387	94.0%	1,590	89.1%	1,407	82.5%	1,494	74.4%	974	66.3%	178	16.0%
Silhill	2,318	96.1%	1,303	93.8%	1,582	88.4%	1,495	76.1%	1,300	67.9%	935	68.1%	179	15.0%
Total	33,579	96.3%	23,021	93.6%	28,841	89.3%	23,409	81.8%	20,191	69.5%	15,359	63.4%	3,166	15.5%

Increasing uptake in areas where fewer people have been vaccinated is a key local priority and area of focus for the local NHS & council, working with local communities. You can check if you are currently eligible for a vaccine and book an appointment at the following website: <https://www.nhs.uk/conditions/coronavirus-covid-19/coronavirus-vaccination/book-coronavirus-vaccination/>

Hospital Inpatients

At **18th November**, there were **178** Covid positive inpatients in University Hospitals Birmingham NHS Foundation Trust hospitals, compared with **171** on **10th November**. This includes **26** in Intensive Treatment / High Dependency Units, compared with **25** on **10th November**. This will include a number of Solihull residents although the majority will be Birmingham residents (source: UHB Inpatient reports, **10th November** and **18th November**)

University Hospitals Birmingham NHS Foundation Trust publish information several times a week at: <https://www.uhb.nhs.uk/coronavirus-staff/daily-statistics.htm>

Weekly Death Registrations and Occurrences (latest data published covers deaths occurred up to **5th November** and registered up to **13th November 2021**)

As of the week ending **5th November**, there have been **702** deaths of Solihull residents that mention COVID-19. **2** COVID-19 death(s) occurred in the latest week.

Further information is available on the Office for National Statistics death registrations page.

Further Information

<https://coventry-city-council.github.io/covid-19/dashboard/>

This dashboard, developed by Coventry City Council, contains a variety of useful information and allows users to compare rates in Solihull with other areas.

The next data summary will be published on **Friday 26th November**.

19th November 2021