

COVID-19 – Solihull Data Summary, 26th November 2021

Summary

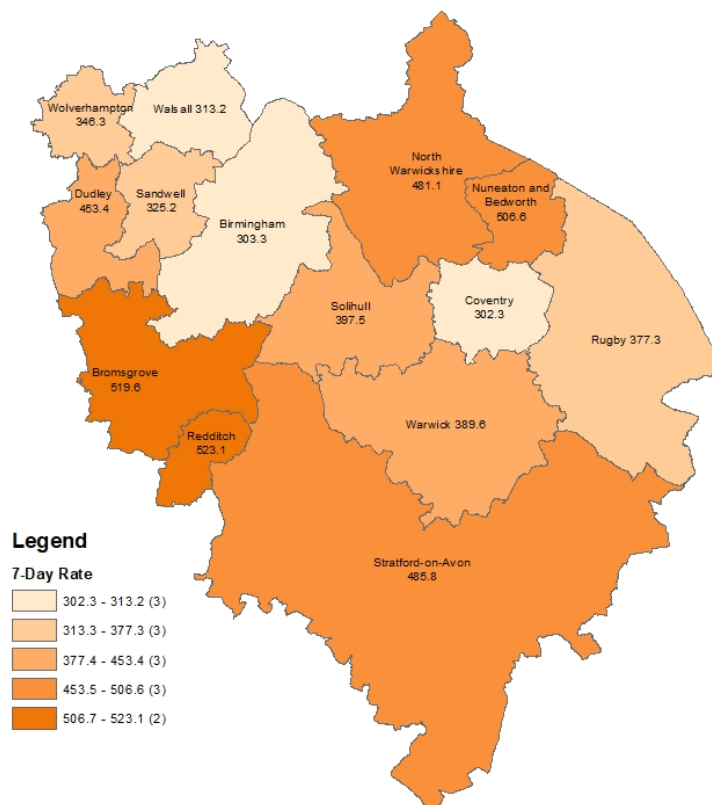
- The number of new cases was **860** in the 7 days to **19th November**, a rate of **397.5** per 100,000 population, an increase of **6%** on the previous 7 days.
- Information about Covid vaccine uptake by age group and electoral ward is given in this bulletin.
- At **24th November**, there were **164** Covid positive inpatients in University Hospitals Birmingham NHS Foundation Trust hospitals, compared with **178** on **18th November**.
- There were **0** Covid related death(s) of a Solihull resident in **w/e 12th November** (deaths registered up to **20th November**). (Source: ONS).

Weekly Cases and Rates

COVID-19 cases are identified by taking specimens from people and sending them to laboratories around the UK to be tested. If the test is positive, this is referred to as a lab-confirmed case.

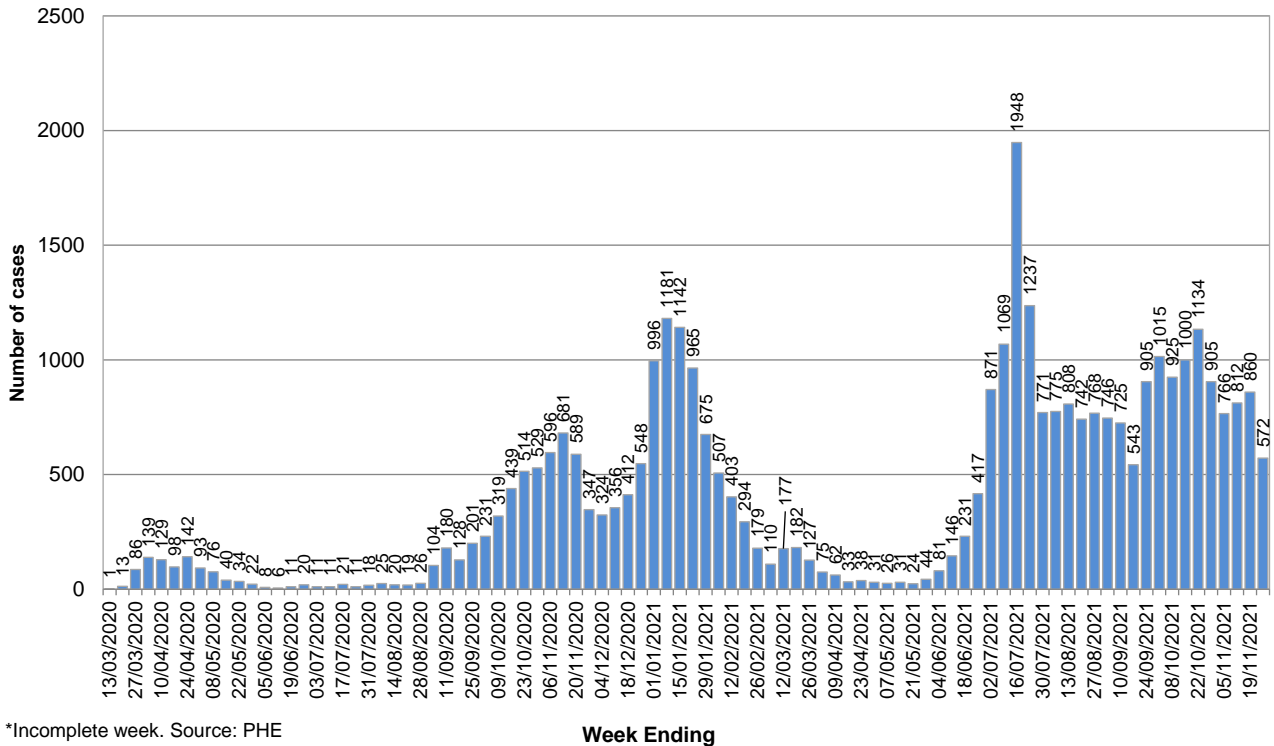
New Cases

In the 7 days to **19th November**, Solihull had **860** new lab-confirmed cases, a rate of **397.5** per 100,000 population. This was an increase of **6%** on the previous 7 days.



The breakdown of cases in Solihull by week over time is shown below. It should be noted that case numbers prior to May 2020 are not directly comparable as there was much more restricted access to testing at that time.

Number of weekly Covid-19 cases in Solihull since 13 March (week ending)

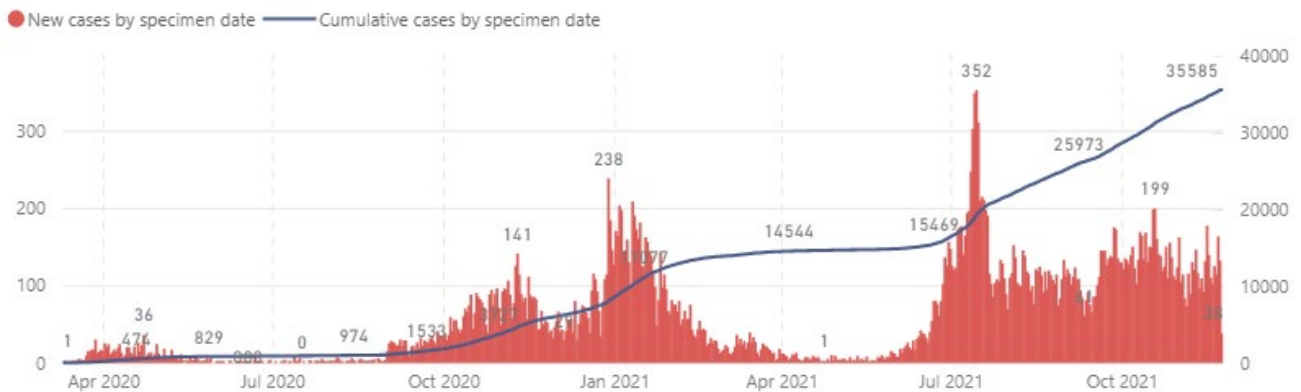


*Incomplete week. Source: PHE

Total Cases

The total number of lab-confirmed cases in Solihull since the start of the pandemic was **35,585** on **24th November**. The cumulative number of cases over time is shown in the graph below; the full-sized version of this chart can be found at <https://coventry-city-council.github.io/covid-19/dashboard/#solihull> (note that is continually updated and chart below is at a point in time – run late on **25th November**).

All ages



Number of New Cases by Ward

The table below shows the number of new lab-confirmed cases by ward for the 14 days **between 9th November and 22nd November 2021**. The number of new cases in the previous 14 days is also shown for comparison. It should be noted that, as electoral wards are relatively small areas, the wards with highest and lowest number of cases are liable to change.

Ward Name	Number of cases 26 th October – 8 th November	Number of cases 9 th November – 22 nd November
Bickenhill	81	77
Blythe	144	153
Castle Bromwich	81	94
Chelmsley Wood	90	84
Dorridge & Hockley Heath	65	86
Elmdon	99	126
Knowle	83	88
Kingshurst & Fordbridge	82	91
Lyndon	91	106
Meriden	93	96
Olton	120	65
Silhill	96	165
Shirley East	112	84
Shirley South	81	96
Shirley West	91	123
St Alphege	104	110
Smith's Wood	99	96
Total	1612	1740

Source: Public Health England Data, lab confirmed cases

Reproduction Number (Rt)

The reproduction number is the number of people that one infected person will pass on a virus to, on average. If the reproduction number is higher than one, then the number of cases increase exponentially. If the number is lower the disease will eventually stop spreading, as not enough new people are being infected to sustain the outbreak. The current reproduction number (Rt) for the Midlands region can be found at <https://www.gov.uk/guidance/the-r-number-in-the-uk>.

Vaccinations

The table below shows uptake of the first dose of the Covid-19 vaccine by age group and electoral ward at **22nd November 2021**. Data is on Birmingham and Solihull CCG registered patients who are resident within Solihull.

Ward Name	Age 70+		Age 60-69		Age 50-59		Age 40-49		Age 30-39		Age 20-29		Age Under 20	
	Vaccinations	Coverage	Vaccinations	Coverage	Vaccinations	Coverage	Vaccinations	Coverage	Vaccinations	Coverage	Vaccinations	Coverage	Vaccinations	Coverage
Bickenhill	1,941	96.8%	1,347	93.8%	1,871	90.4%	1,429	85.5%	1,290	73.9%	1,065	68.4%	629	52.2%
Dorridge and Hockley Heath	1,961	98.5%	1,341	96.5%	1,672	95.1%	1,442	92.1%	914	84.3%	883	83.0%	716	62.3%
Knowle	2,439	98.4%	1,360	96.2%	1,495	94.4%	1,333	91.0%	828	82.7%	687	78.7%	628	61.4%
Meriden	2,409	98.2%	1,542	96.4%	1,956	94.7%	1,522	90.6%	1,024	84.1%	971	82.6%	687	62.5%
Castle Bromwich	2,016	97.2%	1,520	95.4%	1,669	91.8%	1,057	86.9%	1,102	74.8%	893	70.5%	474	52.8%
Chelmsley Wood	1,613	94.4%	1,132	92.0%	1,659	86.7%	1,201	78.4%	1,377	64.8%	1,043	57.8%	506	39.7%
Kingshurst and Fordbridge	1,410	95.8%	1,096	91.9%	1,669	87.8%	1,232	76.4%	1,421	64.9%	1,106	58.8%	566	39.9%
Smith's Wood	1,331	95.2%	1,061	92.7%	1,561	86.5%	1,267	79.5%	1,334	64.0%	1,066	58.0%	571	37.5%
Blythe	1,824	96.6%	1,419	94.2%	1,897	89.4%	1,849	85.1%	1,755	78.9%	1,240	76.6%	773	57.9%
Elmdon	1,945	96.8%	1,387	94.9%	1,636	90.9%	1,321	83.0%	1,345	76.2%	1,003	71.9%	569	52.3%
Lyndon	1,809	96.1%	1,403	94.0%	1,796	89.0%	1,512	84.8%	1,542	74.2%	1,096	65.8%	635	51.0%
Olton	2,294	96.2%	1,517	94.4%	1,822	91.6%	1,363	85.3%	1,230	78.1%	1,077	76.3%	719	62.3%
St Alphege	2,334	96.6%	1,755	94.1%	2,007	90.7%	1,546	84.9%	1,021	77.2%	1,023	78.0%	910	66.8%
Shirley East	1,821	96.5%	1,197	93.6%	1,684	91.9%	1,543	85.7%	1,221	78.3%	919	74.2%	753	57.2%
Shirley South	2,354	96.2%	1,432	93.7%	1,640	91.2%	1,539	83.7%	1,322	79.2%	953	74.7%	627	61.2%
Shirley West	1,905	96.7%	1,395	94.4%	1,612	90.3%	1,452	85.3%	1,590	79.2%	1,087	74.4%	639	57.4%
Silhill	2,323	96.4%	1,314	94.8%	1,604	89.6%	1,542	78.4%	1,367	71.3%	1,027	75.0%	679	57.0%
Total	33,729	96.7%	23,218	94.4%	29,250	90.7%	24,150	84.4%	21,683	74.7%	17,139	70.8%	11,081	54.3%

The following table shows uptake of the second dose of Covid-19 vaccine by electoral ward and age group.

Ward Name	Age 70+		Age 60-69		Age 50-59		Age 40-49		Age 30-39		Age 20-29		Age Under 20	
	Vaccinations	Coverage	Vaccinations	Coverage	Vaccinations	Coverage	Vaccinations	Coverage	Vaccinations	Coverage	Vaccinations	Coverage	Vaccinations	Coverage
Bickenhill	1,927	96.1%	1,333	92.8%	1,838	88.8%	1,377	82.4%	1,203	68.9%	950	61.0%	181	15.0%
Dorridge and Hockley Heath	1,961	98.5%	1,337	96.2%	1,660	94.4%	1,425	91.0%	882	81.4%	821	77.2%	210	18.3%
Knowle	2,429	98.0%	1,354	95.8%	1,485	93.8%	1,315	89.8%	792	79.1%	643	73.7%	183	17.9%
Meriden	2,399	97.8%	1,531	95.7%	1,937	93.8%	1,481	88.2%	981	80.5%	890	75.7%	204	18.5%
Castle Bromwich	2,013	97.1%	1,511	94.8%	1,638	90.1%	1,022	84.0%	1,025	69.5%	798	63.0%	158	17.6%
Chelmsley Wood	1,596	93.4%	1,112	90.4%	1,618	84.6%	1,126	73.5%	1,245	58.6%	865	47.9%	171	13.4%
Kingshurst and Fordbridge	1,397	94.9%	1,083	90.8%	1,627	85.6%	1,169	72.5%	1,271	58.0%	970	51.6%	173	12.2%
Smith's Wood	1,328	95.0%	1,040	90.9%	1,509	83.6%	1,200	75.3%	1,195	57.3%	919	50.0%	158	10.4%
Blythe	1,819	96.3%	1,414	93.9%	1,876	88.4%	1,818	83.7%	1,667	75.0%	1,152	71.2%	209	15.6%
Elmdon	1,930	96.0%	1,378	94.3%	1,616	89.8%	1,285	80.8%	1,259	71.3%	912	65.4%	162	14.9%
Lyndon	1,794	95.3%	1,390	93.1%	1,777	88.1%	1,444	80.9%	1,432	68.9%	989	59.4%	184	14.8%
Olton	2,283	95.7%	1,506	93.7%	1,797	90.4%	1,337	83.7%	1,153	73.2%	983	69.7%	211	18.3%
St Alphege	2,332	96.6%	1,745	93.6%	1,991	89.9%	1,522	83.6%	978	73.9%	931	71.0%	246	18.1%
Shirley East	1,820	96.4%	1,185	92.7%	1,657	90.4%	1,502	83.4%	1,158	74.2%	828	66.8%	213	16.2%
Shirley South	2,343	95.8%	1,425	93.3%	1,623	90.3%	1,504	81.8%	1,243	74.4%	871	68.3%	180	17.6%
Shirley West	1,891	95.9%	1,388	93.9%	1,588	88.9%	1,405	82.5%	1,495	74.5%	977	66.9%	180	16.2%
Silhill	2,317	96.1%	1,303	94.0%	1,583	88.4%	1,497	76.1%	1,297	67.7%	943	68.8%	182	15.3%
Total	33,579	96.3%	23,035	93.6%	28,820	89.3%	23,429	81.9%	20,276	69.8%	15,442	63.8%	3,205	15.7%

Increasing uptake in areas where fewer people have been vaccinated is a key local priority and area of focus for the local NHS & council, working with local communities. You can check if you are currently eligible for a vaccine and book an appointment at the following website: <https://www.nhs.uk/conditions/coronavirus-covid-19/coronavirus-vaccination/book-coronavirus-vaccination/>

Hospital Inpatients

At **24th November**, there were **164** Covid positive inpatients in University Hospitals Birmingham NHS Foundation Trust hospitals, compared with **178** on **18th November**. This includes **23** in Intensive Treatment / High Dependency Units, compared with **26** on **18th November**. This will include a number of Solihull residents although the majority will be Birmingham residents (source: UHB Inpatient reports, **18th November** and **24th November**)

University Hospitals Birmingham NHS Foundation Trust publish information several times a week at: <https://www.uhb.nhs.uk/coronavirus-staff/daily-statistics.htm>

Weekly Death Registrations and Occurrences (latest data published covers deaths occurred up to **12th November** and registered up to **20th November 2021**)

As of the week ending **12th November**, there have been **702** deaths of Solihull residents that mention COVID-19. **0** COVID-19 death(s) occurred in the latest week.

Further information is available on the Office for National Statistics death registrations page.

Further Information

<https://coventry-city-council.github.io/covid-19/dashboard/>

This dashboard, developed by Coventry City Council, contains a variety of useful information and allows users to compare rates in Solihull with other areas.

The next data summary will be published on **Friday 3rd December**.

26th November 2021