

COVID-19 – Solihull Data Summary, 14th January 2022

Summary

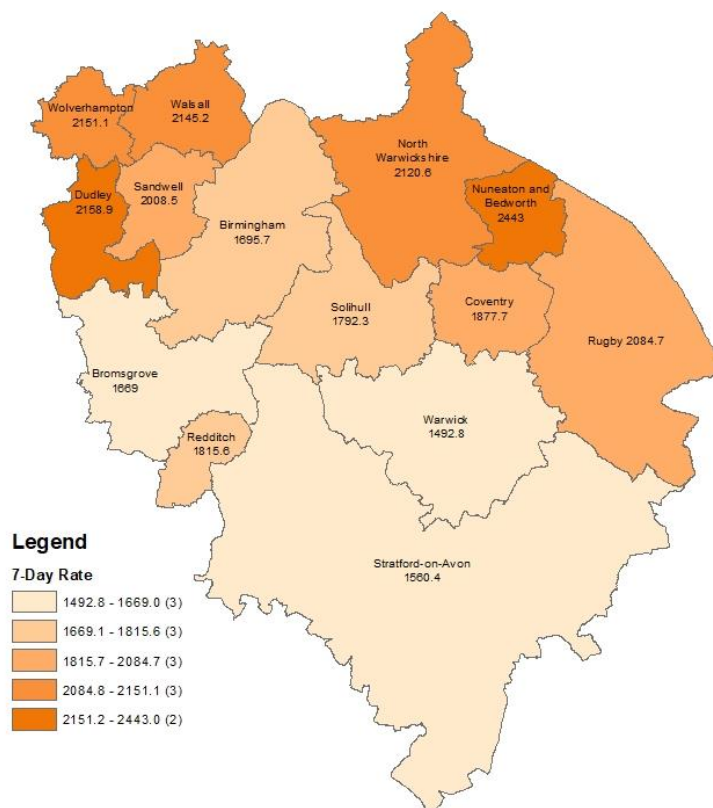
- The number of new cases was **3,878** in the 7 days to **7th January**, a rate of **1,792.3** per 100,000 population, an increase of **10%** on the previous 7 days.
- Information about COVID-19 vaccine uptake by cohort and electoral ward is given in this bulletin.
- At **13th January**, there were **450** COVID-19 positive inpatients in University Hospitals Birmingham NHS Foundation Trust hospitals, compared with **409** on **6th January**.
- There was **1** COVID-19 related death(s) of a Solihull resident in **w/e 31st December** (deaths registered up to **8th January**). (Source: ONS).

Weekly Cases and Rates

COVID-19 cases are defined as an individual with at least one confirmed positive test from a polymerase chain reaction (PCR), rapid lateral flow test (LFT) or loop-mediated isothermal amplification (LAMP) test. Positive rapid lateral flow test results can be confirmed with PCR tests taken within 72 hours. If the PCR test results are negative, these are not reported as cases.

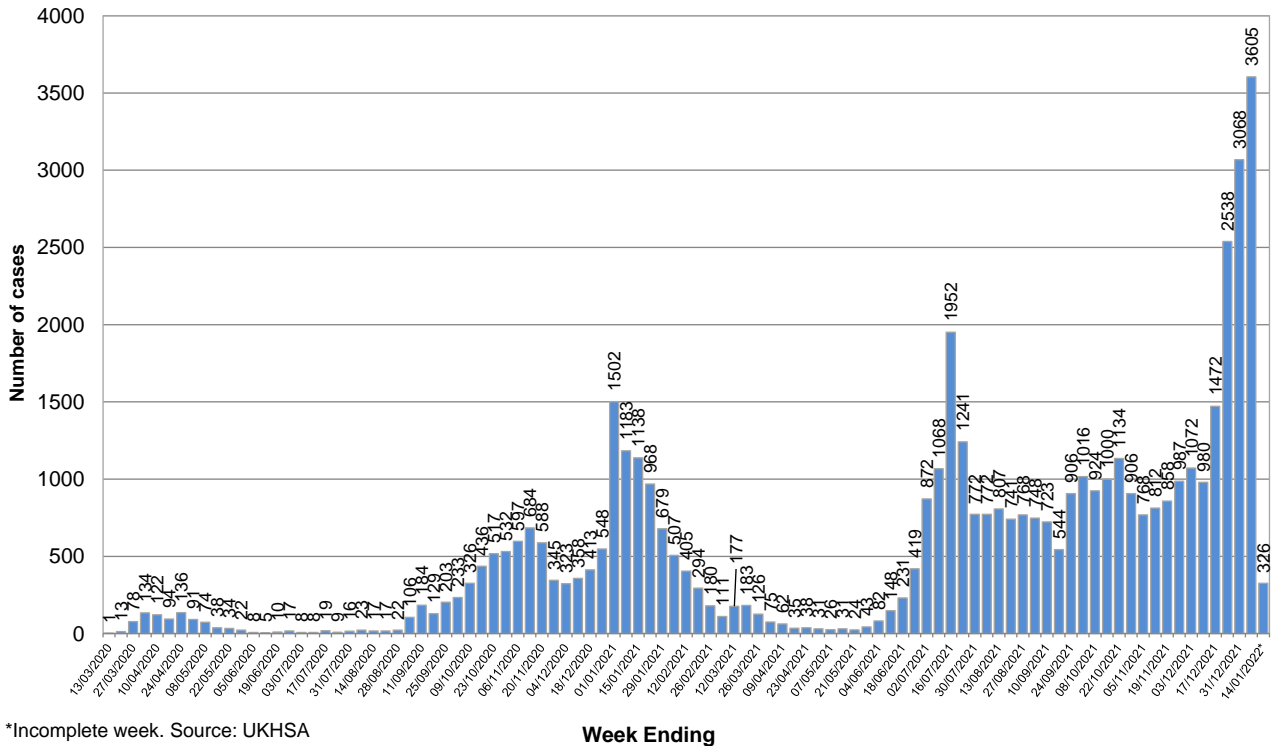
New Cases

In the 7 days to **7th January**, Solihull had **3,878** COVID-19 cases, a rate of **1,792.3** per 100,000 population. This was an increase of **10%** on the previous 7 days.



The breakdown of cases in Solihull by week over time is shown below. It should be noted that case numbers prior to May 2020 are not directly comparable as there was much more restricted access to testing at that time.

Number of weekly COVID-19 cases in Solihull since 13 March (week ending)



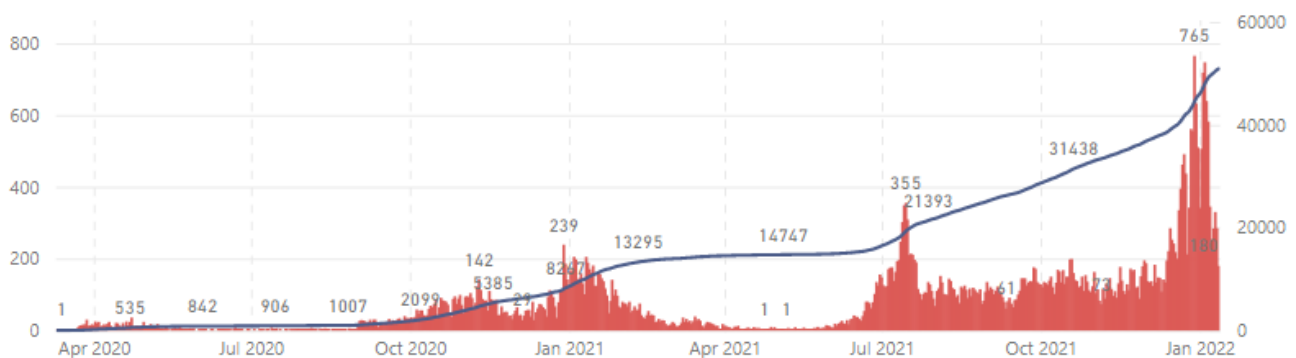
*Incomplete week. Source: UKHSA

Total Cases

The total number of lab-confirmed cases in Solihull since the start of the pandemic was **50,894** on **12th January**. The cumulative number of cases over time is shown in the graph below; the full-sized version of this chart can be found at <https://coventry-city-council.github.io/covid-19/dashboard/#solihull> (note that is continually updated and chart below is at a point in time – run late on **13th January**).

All ages

● New cases by specimen date — Cumulative cases by specimen date



Number of New Cases by Ward

The table below shows the number of new lab-confirmed cases by ward for the 14 days **between 27th December and 9th January 2022**. The number of new cases in the previous 14 days is also shown for comparison. It should be noted that, as electoral wards are relatively small areas, the wards with highest and lowest number of cases are liable to change.

Ward Name	Number of cases 13 th December – 26 th December	Number of cases 27 th December – 9 th January
Bickenhill	238	482
Blythe	357	585
Castle Bromwich	192	417
Chelmsley Wood	215	525
Dorridge & Hockley Heath	212	346
Elmdon	234	421
Knowle	217	313
Kingshurst & Fordbridge	216	559
Lyndon	283	450
Meriden	357	337
Olton	317	434
Silhill	252	440
Shirley East	243	443
Shirley South	204	377
Shirley West	257	490
St Alphege	266	331
Smith's Wood	228	485
Total	4,288	7,435

Source: UK Health Security Agency Data

Reproduction Number (Rt)

The reproduction number is the number of people that one infected person will pass on a virus to, on average. If the reproduction number is higher than one, then the number of cases increase exponentially. If the number is lower the disease will eventually stop spreading, as not enough new people are being infected to sustain the outbreak. The current reproduction number (Rt) for the Midlands region can be found at <https://www.gov.uk/guidance/the-r-number-in-the-uk>.

Vaccinations

The table below shows uptake of the first dose of the COVID-19 vaccine by age group, priority group, and electoral ward at **10th January 2022**. Data is on Birmingham and Solihull CCG registered patients who are resident within Solihull.

Ward Name	80yrs+	75-79yrs	70-74yrs	65-69yrs	60-64yrs	55-59yrs	50-54yrs	40-49yrs	30-39yrs	18-29yrs	16-17yrs	12-15yrs	CEV	COVID at Risk	Carers - LA	Carers - DWP
Bickenhill	97.5%	96.6%	97.1%	94.8%	93.2%	90.9%	91.3%	86.0%	74.7%	71.4%	61.9%	53.4%	93.1%	89.1%	90.8%	77.4%
Dorridge and Hockley Heath	98.0%	99.3%	97.9%	96.2%	96.9%	95.4%	94.6%	92.3%	85.5%	84.1%	82.6%	66.8%	98.4%	96.5%	95.0%	83.9%
Knowle	99.3%	97.6%	98.4%	96.9%	95.2%	94.9%	94.6%	91.1%	84.2%	81.4%	81.9%	65.9%	98.9%	95.3%	97.8%	88.7%
Meriden	98.6%	98.3%	97.8%	96.8%	96.5%	95.1%	94.7%	90.5%	84.9%	84.5%	77.8%	61.8%	96.6%	94.6%	94.0%	85.3%
Castle Bromwich	97.3%	97.5%	97.1%	96.0%	94.8%	93.0%	91.4%	87.6%	75.6%	74.3%	66.9%	48.1%	95.7%	91.2%	94.6%	85.5%
Chelmsley Wood	93.0%	96.0%	95.5%	93.0%	91.4%	88.2%	86.4%	79.2%	65.5%	60.1%	53.7%	36.5%	92.1%	86.1%	83.5%	77.0%
Kingshurst and Fordbridge	95.2%	96.9%	95.6%	93.9%	90.9%	90.0%	86.9%	76.7%	66.9%	62.6%	54.5%	34.8%	92.2%	86.9%	84.3%	76.4%
Smith's Wood	94.2%	96.5%	94.6%	94.0%	92.2%	87.2%	86.3%	79.6%	64.9%	60.1%	48.8%	35.7%	91.7%	84.1%	86.7%	75.3%
Blythe	96.5%	97.4%	95.8%	96.6%	92.2%	91.5%	87.9%	85.5%	79.5%	78.5%	72.2%	61.7%	98.5%	91.3%	93.4%	81.3%
Elmdon	97.4%	95.9%	96.8%	95.4%	94.2%	91.5%	90.8%	84.4%	77.7%	73.7%	65.7%	50.4%	94.4%	90.4%	93.7%	86.9%
Lyndon	95.7%	96.7%	96.2%	94.1%	93.8%	91.5%	87.8%	85.0%	75.8%	68.6%	62.8%	47.1%	93.4%	89.6%	92.3%	80.3%
Olton	96.9%	95.6%	95.7%	95.3%	93.0%	92.3%	91.6%	85.7%	78.6%	77.8%	79.1%	62.5%	95.7%	91.5%	93.3%	85.7%
St Alphege	97.6%	97.6%	94.8%	94.7%	93.8%	91.9%	89.0%	84.4%	77.7%	79.9%	80.6%	67.4%	97.2%	94.0%	95.9%	94.0%
Shirley East	96.9%	96.3%	96.4%	94.8%	93.0%	92.4%	92.3%	86.1%	79.6%	76.7%	74.7%	57.1%	94.0%	91.2%	92.2%	84.0%
Shirley South	96.6%	95.2%	96.5%	93.5%	93.9%	93.0%	89.5%	83.7%	80.6%	76.9%	77.2%	56.5%	96.4%	92.5%	91.7%	83.5%
Shirley West	96.9%	97.4%	95.8%	94.2%	94.3%	90.6%	90.0%	85.4%	79.6%	76.2%	66.3%	54.7%	94.7%	91.2%	94.4%	83.1%
Silhill	96.8%	96.5%	95.4%	95.5%	94.0%	90.8%	88.5%	78.2%	72.4%	75.5%	69.6%	53.8%	94.6%	91.0%	92.1%	78.6%

Within this category, 75% or more of the ward have been vaccinated

Within this category, less than 75% of the ward have been vaccinated

The following table shows uptake of the second dose of COVID-19 vaccine by electoral ward, age group, and priority group.

Increasing uptake in areas where fewer people have been vaccinated is a key local priority and area of focus for the local NHS & council, working with local communities. You can check if you are currently eligible for a vaccine and book an appointment at the following website: <https://www.nhs.uk/conditions/coronavirus-covid-19/coronavirus-vaccination/book-coronavirus-vaccination/>

Ward Name	80yrs+	75-79yrs	70-74yrs	65-69yrs	60-64yrs	55-59yrs	50-54yrs	40-49yrs	30-39yrs	18-29yrs	16-17yrs	12-15yrs	CEV	COVID at Risk	Carers - LA	Carers - DWP
Bickenhill	96.6%	96.0%	96.7%	94.1%	92.2%	89.8%	89.1%	83.6%	70.4%	64.4%	45.1%	3.4%	91.2%	86.1%	89.6%	72.9%
Dorridge and Hockley Heath	98.0%	99.1%	98.1%	96.0%	96.8%	94.7%	94.0%	91.3%	83.1%	79.5%	58.9%	13.4%	98.7%	95.0%	94.0%	82.3%
Knowle	99.0%	96.9%	98.4%	96.3%	94.7%	94.4%	93.8%	90.0%	80.8%	77.0%	66.0%	13.8%	98.2%	94.1%	96.8%	86.8%
Meriden	98.0%	97.9%	97.8%	96.3%	96.0%	94.2%	94.0%	88.6%	82.6%	79.2%	59.3%	9.8%	95.7%	93.4%	92.0%	81.4%
Castle Bromwich	97.0%	97.4%	97.0%	95.5%	94.4%	91.9%	89.6%	85.6%	70.8%	67.5%	49.6%	2.6%	94.9%	89.8%	93.1%	82.0%
Chelmsley Wood	91.6%	95.8%	94.5%	91.5%	89.7%	86.2%	84.6%	74.6%	59.9%	50.6%	28.8%	2.6%	90.4%	82.0%	80.1%	72.8%
Kingshurst and Fordbridge	94.4%	96.4%	95.0%	93.3%	89.3%	88.1%	84.9%	73.3%	60.1%	54.7%	30.4%	2.2%	89.7%	83.7%	77.0%	68.5%
Smith's Wood	93.5%	96.7%	94.4%	92.2%	90.5%	85.7%	83.3%	76.1%	59.1%	51.8%	28.5%	2.3%	90.5%	80.8%	81.0%	68.6%
Blythe	96.1%	97.1%	95.5%	96.6%	91.5%	90.8%	87.1%	84.2%	76.9%	74.0%	51.8%	3.2%	97.4%	90.2%	93.4%	80.6%
Elmdon	97.1%	95.3%	95.7%	95.0%	93.6%	90.7%	89.5%	82.6%	73.4%	66.8%	45.0%	3.1%	92.3%	87.6%	91.2%	84.7%
Lyndon	95.1%	96.7%	95.0%	93.8%	93.0%	90.6%	86.5%	81.8%	70.6%	62.6%	38.4%	2.5%	90.8%	87.1%	87.5%	75.7%
Olton	96.3%	95.2%	95.6%	94.8%	92.4%	91.4%	90.2%	84.3%	75.3%	72.4%	58.8%	2.9%	94.5%	89.8%	92.1%	81.2%
St Alphege	97.7%	97.3%	94.7%	94.5%	93.5%	91.1%	88.3%	83.3%	75.3%	74.7%	64.9%	5.3%	96.9%	92.6%	94.3%	92.0%
Shirley East	96.9%	96.3%	96.4%	94.8%	91.4%	91.5%	90.7%	84.1%	76.0%	71.1%	54.4%	2.9%	92.6%	89.2%	90.2%	82.4%
Shirley South	96.5%	94.9%	96.2%	93.2%	93.8%	92.1%	88.7%	82.4%	76.5%	71.6%	59.2%	3.4%	96.3%	90.8%	90.6%	81.0%
Shirley West	96.7%	96.0%	95.4%	94.0%	93.7%	89.6%	89.1%	83.6%	76.5%	70.1%	44.8%	3.0%	92.8%	89.1%	91.5%	78.1%
Silhill	96.7%	96.7%	95.4%	94.7%	93.4%	89.5%	87.5%	76.4%	69.0%	70.9%	52.0%	3.9%	93.7%	88.5%	90.0%	71.0%

Within this category, 75% or more of the ward have been vaccinated

Within this category, less than 75% of the ward have been vaccinated

The following table shows uptake of the booster/third dose of COVID-19 vaccine by electoral ward, age group, and priority group. A third dose of COVID-19 vaccine is given to people with a weakened immune system and is different to a COVID-19 booster dose.

Ward Name	80yrs+	75-79yrs	70-74yrs	65-69yrs	60-64yrs	55-59yrs	50-54yrs	40-49yrs	30-39yrs	18-29yrs	16-17yrs*	12-15yrs*	CEV	COVID at Risk	Carers - LA	Carers - DWP
Bickenhill	97.3%	98.3%	97.7%	96.5%	90.6%	89.9%	86.3%	79.6%	66.8%	54.4%	46.7%	0.0%	91.9%	83.7%	84.5%	81.7%
Dorridge and Hockley Heath	98.7%	99.5%	99.5%	99.3%	97.2%	97.3%	94.8%	87.2%	79.6%	69.0%	63.9%	50.0%	96.3%	92.3%	98.9%	86.3%
Knowle	98.2%	98.8%	98.7%	98.0%	97.5%	94.7%	93.0%	89.5%	79.2%	66.5%	63.6%	100.0%	96.2%	91.8%	97.7%	77.8%
Meriden	98.8%	99.3%	98.3%	97.1%	95.9%	93.7%	91.1%	85.7%	76.1%	61.0%	54.2%	33.3%	96.6%	89.8%	89.0%	83.5%
Castle Bromwich	95.7%	98.1%	97.2%	94.0%	93.9%	88.0%	84.5%	75.9%	60.1%	48.6%	41.4%	0.0%	89.6%	83.9%	90.8%	80.1%
Chelmsley Wood	96.1%	95.2%	95.4%	93.8%	90.4%	84.2%	80.1%	73.1%	55.1%	45.2%	42.9%	0.0%	90.7%	78.9%	76.3%	68.6%
Kingshurst and Fordbridge	96.5%	96.3%	96.1%	94.4%	89.6%	85.2%	79.8%	73.3%	52.9%	44.8%	43.5%	0.0%	88.4%	80.4%	83.2%	69.4%
Smith's Wood	97.6%	97.7%	95.3%	94.0%	90.2%	81.8%	79.2%	68.3%	54.5%	44.1%	50.0%	50.0%	88.2%	77.6%	69.5%	64.1%
Blythe	96.9%	97.3%	98.6%	97.5%	95.8%	94.4%	91.0%	85.8%	73.1%	63.8%	52.6%	25.0%	93.4%	89.6%	90.2%	81.7%
Elmdon	95.6%	96.9%	96.2%	96.6%	93.2%	87.7%	84.2%	75.2%	61.9%	51.7%	41.7%	N/A	89.2%	82.0%	90.8%	78.3%
Lyndon	95.6%	96.7%	96.9%	94.6%	90.7%	86.8%	83.3%	73.3%	63.4%	50.1%	57.1%	25.0%	88.4%	80.1%	77.8%	66.3%
Olton	96.9%	97.0%	97.7%	96.5%	94.7%	90.7%	86.8%	81.0%	68.2%	55.2%	30.6%	0.0%	92.0%	83.8%	90.7%	75.0%
St Alphege	98.9%	98.0%	+	98.2%	97.3%	95.6%	94.2%	86.7%	76.3%	63.6%	41.7%	33.3%	96.3%	93.1%	95.7%	91.3%
Shirley East	97.8%	97.0%	97.8%	95.3%	94.5%	93.5%	89.1%	83.5%	69.6%	55.8%	48.1%	33.3%	93.0%	87.0%	91.7%	78.0%
Shirley South	98.3%	99.5%	97.1%	96.7%	95.3%	91.0%	88.5%	83.1%	68.8%	54.9%	55.6%	16.7%	95.4%	87.4%	91.9%	81.9%
Shirley West	96.8%	98.6%	97.5%	95.1%	94.6%	89.8%	86.8%	79.5%	66.7%	53.1%	35.7%	0.0%	91.8%	86.1%	88.9%	78.9%
Silhill	99.8%	99.8%	98.2%	97.3%	93.3%	92.0%	90.0%	84.4%	69.5%	59.4%	45.2%	0.0%	96.8%	88.1%	88.8%	76.9%

Within this category, 75% or more of the ward have been vaccinated

Within this category, less than 75% of the ward have been vaccinated

*Not currently eligible for a Booster/Third Dose of COVID-19 vaccine unless they're at risk from COVID-19 or live with someone who is vulnerable.

+Data has been suppressed because of concerns over data quality.

Hospital Inpatients

At **13th January**, there were **450** COVID-19 positive inpatients in University Hospitals Birmingham NHS Foundation Trust hospitals, compared with **409** on **6th January**. This includes **20** in Intensive Treatment / High Dependency Units, compared with **25** on **6th January**. This will include a number of Solihull residents although the majority will be Birmingham residents (source: UHB Inpatient reports, **6th January** and **13th January**).

University Hospitals Birmingham NHS Foundation Trust publish information several times a week at: <https://www.uhb.nhs.uk/coronavirus-staff/daily-statistics.htm>

Weekly Death Registrations and Occurrences (latest data published covers deaths occurred up to **31st December** and registered up to **8th January 2022**)

As of the week ending **31st December**, there have been **719** deaths of Solihull residents that mention COVID-19. **1** COVID-19 death(s) occurred in the latest week.

Further information is available on the Office for National Statistics death registrations page.

Further Information

<https://coventry-city-council.github.io/covid-19/dashboard/>

This dashboard, developed by Coventry City Council, contains a variety of useful information and allows users to compare rates in Solihull with other areas.

The next data summary will be published on **Friday 21st January**.

14th January 2022