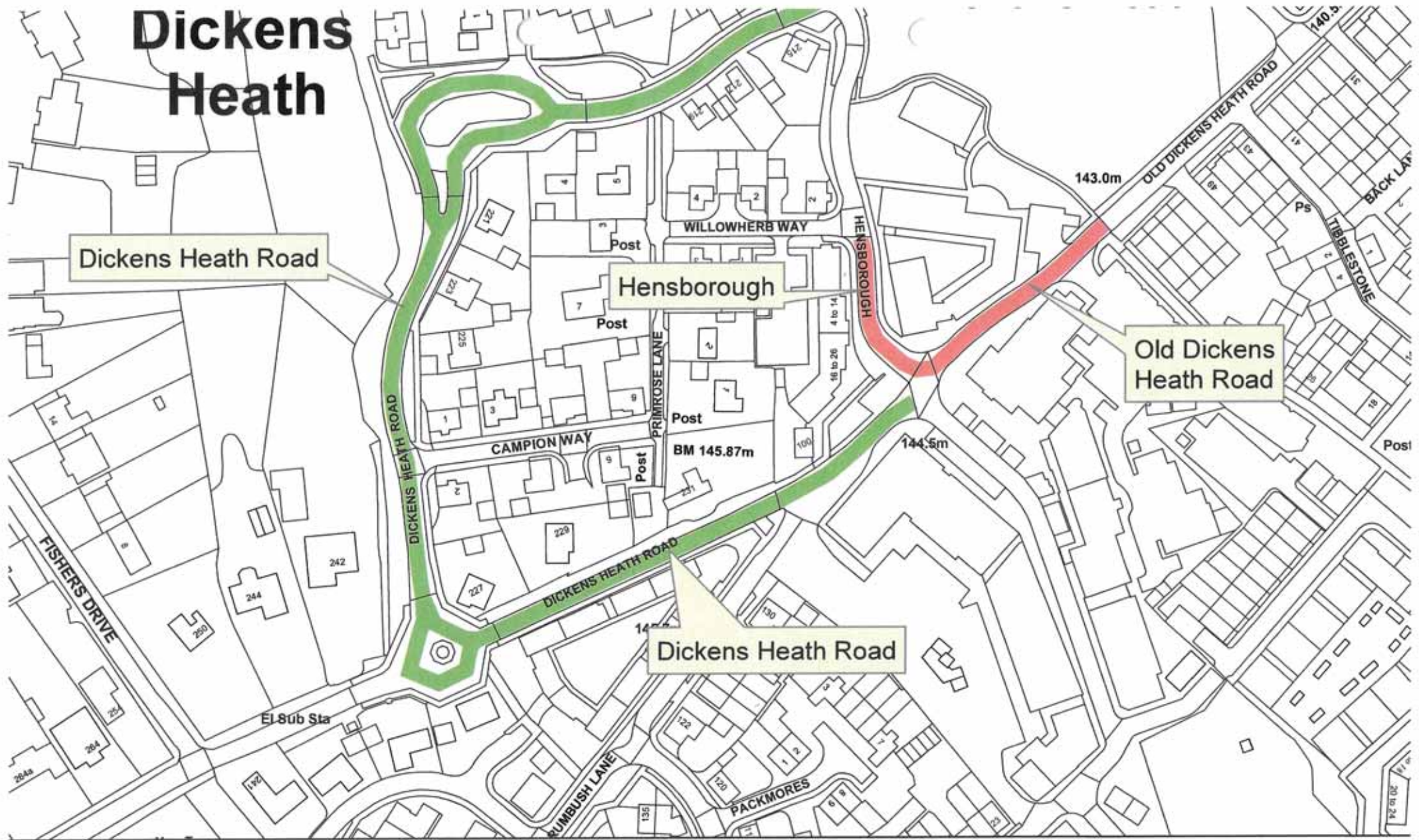


# Dickens Heath



## Temporary Road Closure - Dickens Heath Remembrance Sunday Parade



N

Metropoli

# Remembrance Sunday, Hampton In Arden. 10-Nov-24



Gazebo in corner of road to be near and in front of the podium but not completely blocking the main road in order to maintain emergency access.

Gazebo also needs to be near to the preparation area as it will need to be moved at 10.20am when the roads close (and moved back at the end).



## Remembrance Sunday, Hampton In Arden. 10-Nov-24



### Sound:

#### Setup:

- Park in direction of arrow (beyond double yellow lines) or in sports club.
- Setup next to war memorial around 09.00/09.30.
- Power from Parish Council supply (bring a triangular gas/electricity meter style key to access the box)
- Loudspeakers and cables to be laid into position once road closes at 10am.
- Cables to be covered to avoid trip hazards.
- Procession from church expected at war-memorial around 10.30 for the service.

#### Equipment required

- Mixer, amplifier, speakers, cables etc.
- Sound connection for electric piano (presumably 1/4" but please bring all options!).
- Microphone and stand for Bugle player (for the last post).
- Podium
- Podium microphone & stand
- Cable covers (see above)

#### Clear-down:

- Speakers and cables to be retrieved **before** road re-opens after service (typically around 11.20/11.30). Although official road closure is until 12.00, road will re-open once audience has left.
- Move items onto area behind war-memorial for breakdown/pack away.

#### Notes:

- Gazebo (4m x 3m) will also be constructed behind war memorial before being moved into position after road closes, please leave some space for this. It will be moved back at the end for de-construction.

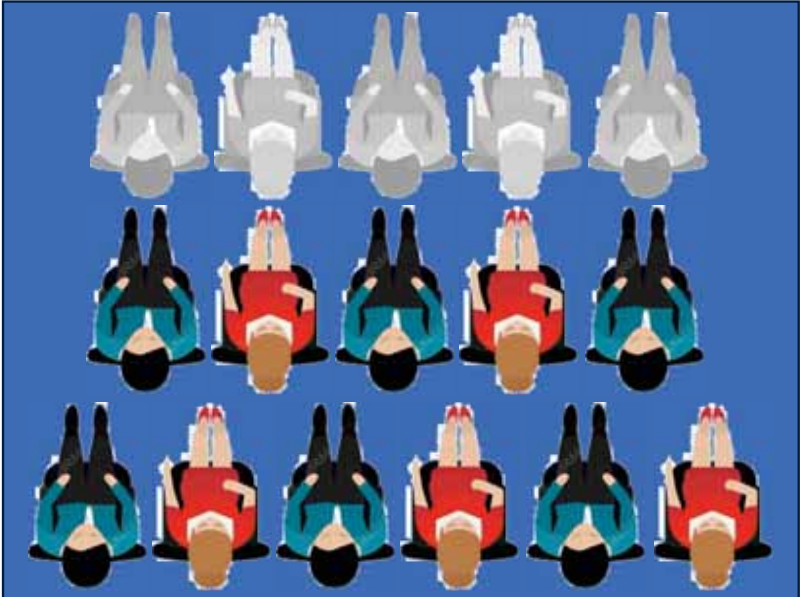
Remembrance Sunday, Hampton In Arden. 10-Nov-24



Gazebo (seating & shelter for very elderly or those in need):

- Do not use in high winds.
- Construct in prep-area. (Poles and top-cover, not windows).
- Move into position (4 person lift, one per corner) after road closures at 10am
- Don't position too far onto B4102 to maintain emergency services access.
- Add hold down weights, two on each leg.
- Move chairs from prep area (see below).
- After service move back to prep-area before roads re-open.
- Deconstruct in prep-area.

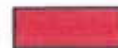
Arrange seating 2 or 3 rows, 5 or 6 persons per row. Make decision on the day depending on space and ground flatness (avoid placing very wobbly chairs).



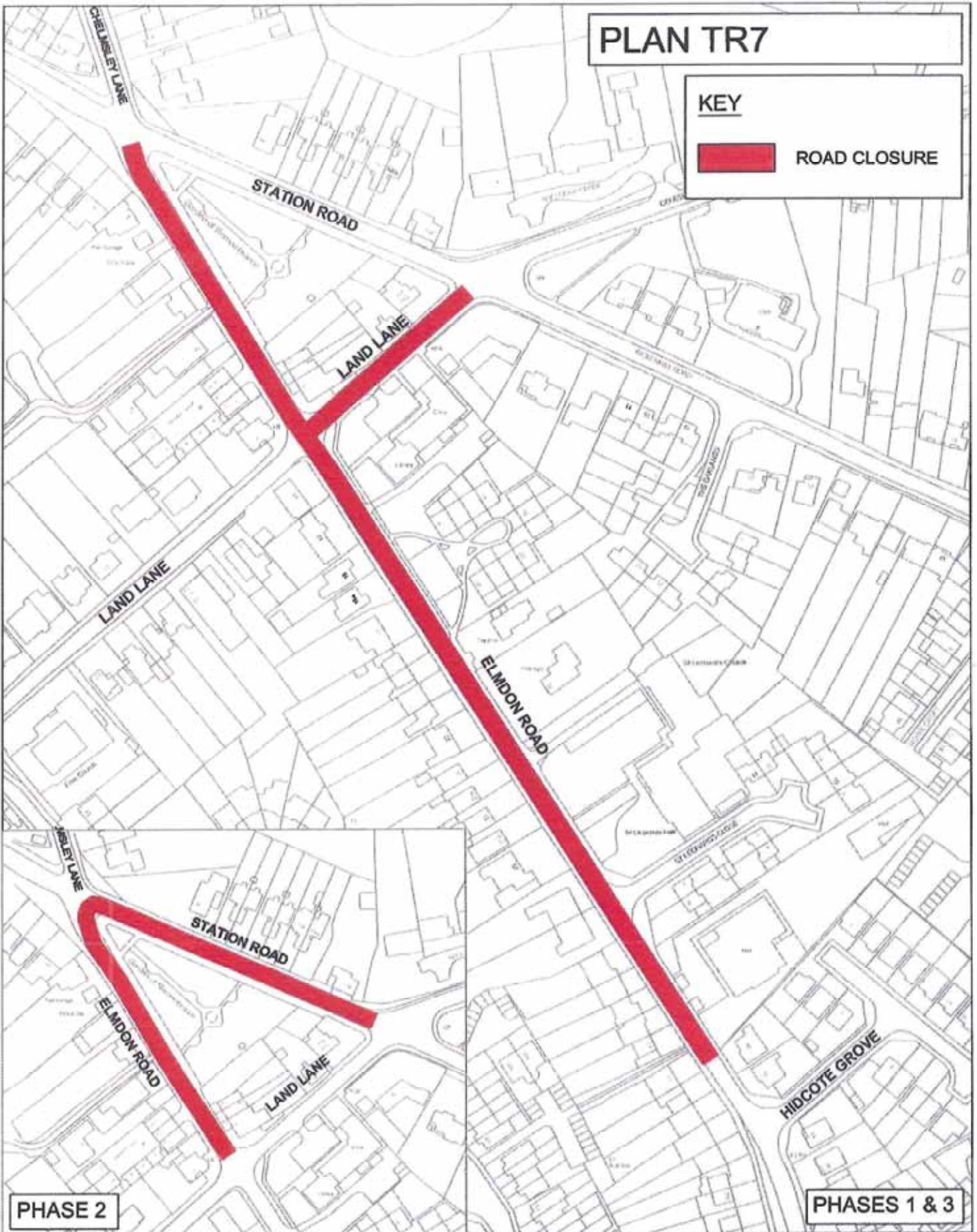


# PLAN TR7

## KEY



ROAD CLOSURE



PHASE 2

PHASES 1 & 3

## REMEMBRANCE DAY PARADE MARSTON GREEN - Sunday, 10 November 2024



MANAGED GROWTH DIRECTORATE

Referred to in item :

Drawn By: **RG**

Checked By:

DO NOT SCALE

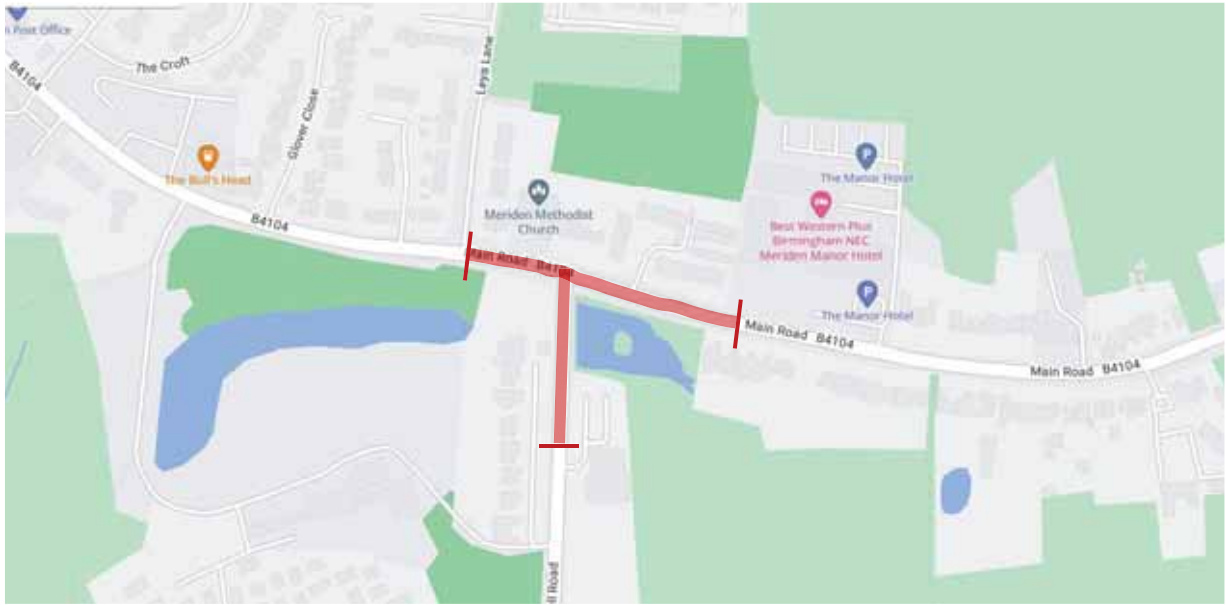
Plan No. **TR71**

Scale **N.T.S.**

Date: **OCT'17**

OS Ref

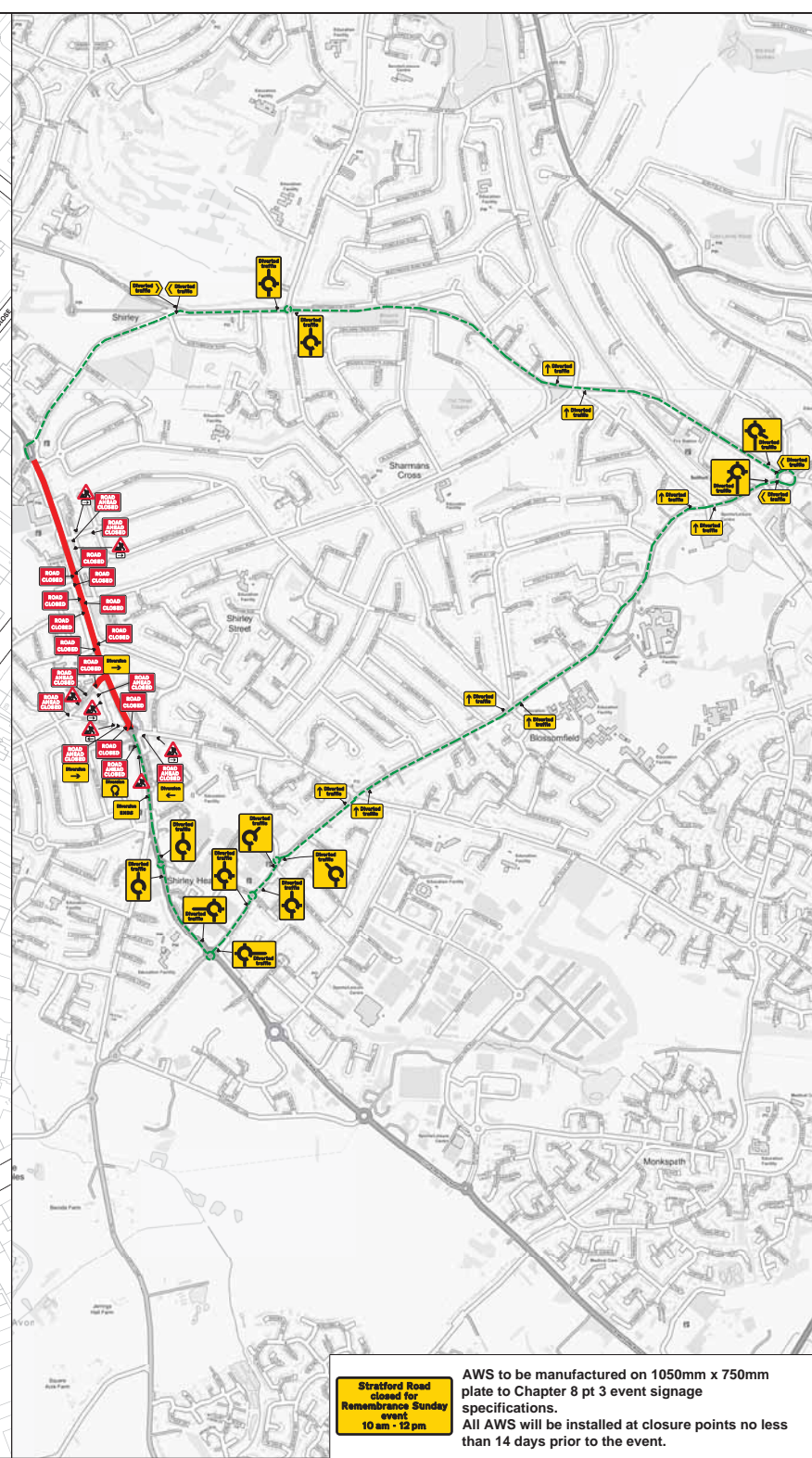
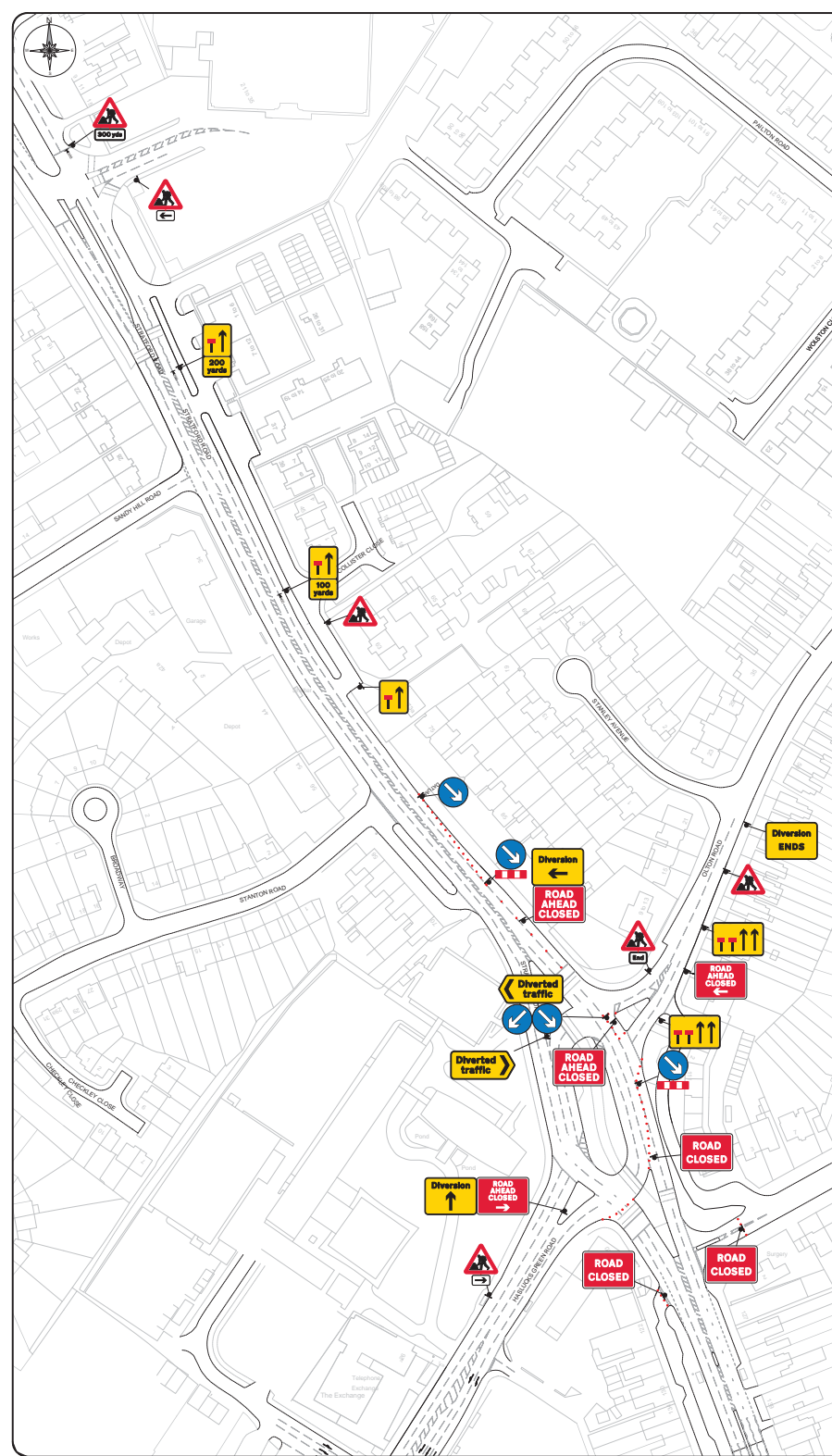
This map is reproduced from the Ordnance Survey material with the permission of Ordnance Survey on behalf of The Controller of Her Majesty's Stationery Office. © Crown copyright. Unauthorised reproduction infringes Crown copyright and may lead to prosecution or civil proceedings. Softhill Metropolitan Borough Council - 10602138 2004



Remembrance Day Service Closure

Meriden Parish Council





**Stratford Road closed for Remembrance Sunday event**  
10 am - 12 pm

**AWS to be manufactured on 1050mm x 750mm plate to Chapter 8 pt 3 event signage specifications.**  
**All AWS will be installed at closure points no less than 14 days prior to the event.**

Desktop survey undertaken from google street view with imagery dated August 2020

All traffic management shall comply with all current legislation and guidance including Chapter 8, Safety at Street Works and Road Works (A Code of Practice)

Pedestrian management to be installed and managed to suit site conditions in accordance with current legislation & codes of practice by the contractor unless otherwise stated

All signage and road markings shall conform with the Traffic Signs Regulations and General Directions (TSRGD)

Sign locations are indicative only, exact location to be determined on site

Subsally qualified operatives to assess site to ensure the installation complies with all current legislation. Any issues and/or changes from the original design should be immediately reported to the relevant contracts manager/designer

This design is only valid for 12 months from date of production and should be re-evaluated if installation is to take place after this period

**Size of signage**

Single carriageway (national speed limit as shown below or less)	750mm	900mm
Dual carriageway (national speed limit as shown below or more)	750mm	900mm

**Key:**

	Works Area		Temporary Traffic Signal
	Closure		Stop & Go Board
	Vehicle Diversion Route		Temporary Ped Signal
	Ped Diversion Route		Warning Bus Stop
	Cone		Temporary Sign
	Down Point		Pedestrian Barrier

**Safety Information:**

Min width of escape safety zone (S)	0.5m
Min length of longways clearance (L)	0.5m
Stratford Road	

**Site Information:**

NSG	Stratford Road, Shirley	
Local Authority	South MRC	
OSRN	1001024	
Road Type	Dual carriageway	
Road Width	Varies	
Works Location	X-412017 Y-278847	
Surveyed	X (Bus Stop(s))	X (Parked Vehicle(s))
Term Signs	X (Contractor's)	X (Cycle Lanes)

**Chapter 8 details:**

**Detail B**

1) During darkness, warning lights to BS EN 12352:2008 should be provided in accordance with Table A1.3 (Appendix 1)

2) 45° taper to have 1.2m spacing, no relaxations

3) On motorways and NIS, left-side with head protection, no cones will be required for both standard and relaxation works for road works and the facing way of lane changes

**Detail C1**

1) During darkness, warning lights to BS EN 12352:2008 should be provided in accordance with Table A1.3 (Appendix 1)

2) For relaxation to Detail C1 see Table A1.3 (Appendix 1)

**Detail C2**

1) During darkness, warning lights to BS EN 12352:2008 should be provided in accordance with Table A1.3

**Sign Schedule:**

Sign 1	300 yds	
Sign 2	100 yds	
Sign 3	ROAD AHEAD CLOSED	
Sign 4	ROAD CLOSED	
Sign 5	Diversed traffic	
Sign 6	Diverion	
Sign 7	Diverion ENDS	
Sign 8	End	
Sign 9	ROAD AHEAD CLOSED	
Sign 10	ROAD CLOSED	
Sign 11	ROAD AHEAD CLOSED	
Sign 12	ROAD CLOSED	
Sign 13	ROAD AHEAD CLOSED	
Sign 14	ROAD CLOSED	
Sign 15	ROAD AHEAD CLOSED	
Sign 16	ROAD CLOSED	
Sign 17	ROAD AHEAD CLOSED	
Sign 18	ROAD CLOSED	
Sign 19	ROAD AHEAD CLOSED	
Sign 20	ROAD CLOSED	
Sign 21	ROAD AHEAD CLOSED	
Sign 22	ROAD CLOSED	
Sign 23	ROAD AHEAD CLOSED	
Sign 24	ROAD CLOSED	
Sign 25	ROAD AHEAD CLOSED	
Sign 26	ROAD CLOSED	
Sign 27	ROAD AHEAD CLOSED	
Sign 28	ROAD CLOSED	
Sign 29	ROAD AHEAD CLOSED	
Sign 30	ROAD CLOSED	
Sign 31	ROAD AHEAD CLOSED	
Sign 32	ROAD CLOSED	
Sign 33	ROAD AHEAD CLOSED	
Sign 34	ROAD CLOSED	
Sign 35	ROAD AHEAD CLOSED	
Sign 36	ROAD CLOSED	
Sign 37	ROAD AHEAD CLOSED	
Sign 38	ROAD CLOSED	
Sign 39	ROAD AHEAD CLOSED	
Sign 40	ROAD CLOSED	
Sign 41	ROAD AHEAD CLOSED	
Sign 42	ROAD CLOSED	
Sign 43	ROAD AHEAD CLOSED	
Sign 44	ROAD CLOSED	
Sign 45	ROAD AHEAD CLOSED	
Sign 46	ROAD CLOSED	
Sign 47	ROAD AHEAD CLOSED	
Sign 48	ROAD CLOSED	
Sign 49	ROAD AHEAD CLOSED	
Sign 50	ROAD CLOSED	
Sign 51	ROAD AHEAD CLOSED	
Sign 52	ROAD CLOSED	
Sign 53	ROAD AHEAD CLOSED	
Sign 54	ROAD CLOSED	
Sign 55	ROAD AHEAD CLOSED	
Sign 56	ROAD CLOSED	
Sign 57	ROAD AHEAD CLOSED	
Sign 58	ROAD CLOSED	
Sign 59	ROAD AHEAD CLOSED	
Sign 60	ROAD CLOSED	
Sign 61	ROAD AHEAD CLOSED	
Sign 62	ROAD CLOSED	
Sign 63	ROAD AHEAD CLOSED	
Sign 64	ROAD CLOSED	
Sign 65	ROAD AHEAD CLOSED	
Sign 66	ROAD CLOSED	
Sign 67	ROAD AHEAD CLOSED	
Sign 68	ROAD CLOSED	
Sign 69	ROAD AHEAD CLOSED	
Sign 70	ROAD CLOSED	
Sign 71	ROAD AHEAD CLOSED	
Sign 72	ROAD CLOSED	
Sign 73	ROAD AHEAD CLOSED	
Sign 74	ROAD CLOSED	
Sign 75	ROAD AHEAD CLOSED	
Sign 76	ROAD CLOSED	
Sign 77	ROAD AHEAD CLOSED	
Sign 78	ROAD CLOSED	
Sign 79	ROAD AHEAD CLOSED	
Sign 80	ROAD CLOSED	
Sign 81	ROAD AHEAD CLOSED	
Sign 82	ROAD CLOSED	
Sign 83	ROAD AHEAD CLOSED	
Sign 84	ROAD CLOSED	
Sign 85	ROAD AHEAD CLOSED	
Sign 86	ROAD CLOSED	
Sign 87	ROAD AHEAD CLOSED	
Sign 88	ROAD CLOSED	
Sign 89	ROAD AHEAD CLOSED	
Sign 90	ROAD CLOSED	
Sign 91	ROAD AHEAD CLOSED	
Sign 92	ROAD CLOSED	
Sign 93	ROAD AHEAD CLOSED	
Sign 94	ROAD CLOSED	
Sign 95	ROAD AHEAD CLOSED	
Sign 96	ROAD CLOSED	
Sign 97	ROAD AHEAD CLOSED	
Sign 98	ROAD CLOSED	
Sign 99	ROAD AHEAD CLOSED	
Sign 100	ROAD CLOSED	

**Project Info:**

Client: SolCAD

Project Name: Working in Partnership with **traffix**

Local traffic & event management solutions

City Address: Stratford Road, Shirley, Birmingham B92 0JY

Tel: +44 (0)121 819 3001 | Fax: +44 (0)121 842207

info@traffix.com | www.traffix.com

**Traffic Management**

Drawing No: Proposed Event Road Closure Stratford Road Solihull B90 3BL

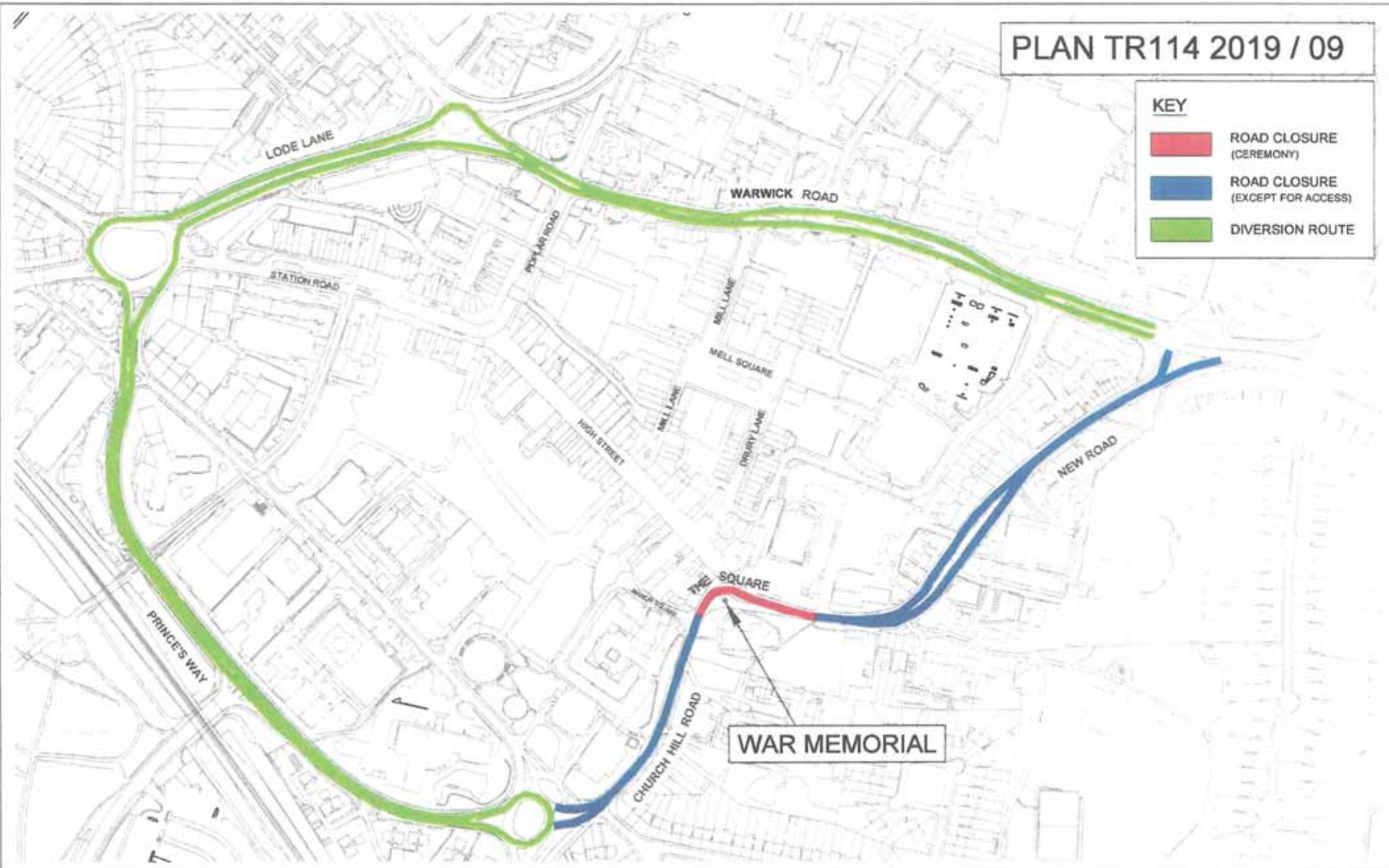
Date:	16/09/2023	Scale:	NTS	Sheet:	AT
Drawn:	MD	Checked:	CM	Approved:	CM
Project Number:	TFX BE073	Drawing Number:	001	Revision:	A

This drawing is copyright & the property of Traffix & must not be copied or reproduced without the written permission. Copyright is reserved. © The Contractor is to report all discrepancies & errors to the Contract Manager prior to works commencing.



**KEY**

- ROAD CLOSURE (CEREMONY)
- ROAD CLOSURE (EXCEPT FOR ACCESS)
- DIVERSION ROUTE



This map is reproduced from the Ordnance Survey material with the permission of Ordnance Survey on behalf of The Controller of Her Majesty's Stationery Office. © Crown copyright. Unauthorised reproduction infringes Crown copyright and may lead to prosecution or civil proceedings. Solihull Metropolitan Borough Council - 100023139 - 2004.

**REMEMBRANCE DAY PARADE  
SOLIHULL TOWN CENTRE - SUNDAY 10/11/2019**



Solihull MDC Licence No: 100023139  
Contains Ordnance Survey data © Crown Copyright and database right 2019

Referred to in Item	Drawn By: RG	Checked By	DO NOT SCALE
Plan No TR114 / 2019	Scale N.T.S.	Date OCT'19	OS Ref

MANAGED GROWTH DIRECTORATE