

**FOR EXTENT OF DIVERSION
PLEASE REFER TO PLAN
"Homer Road, Solihull - Road
closure (Phase 4) (Diversion)"**

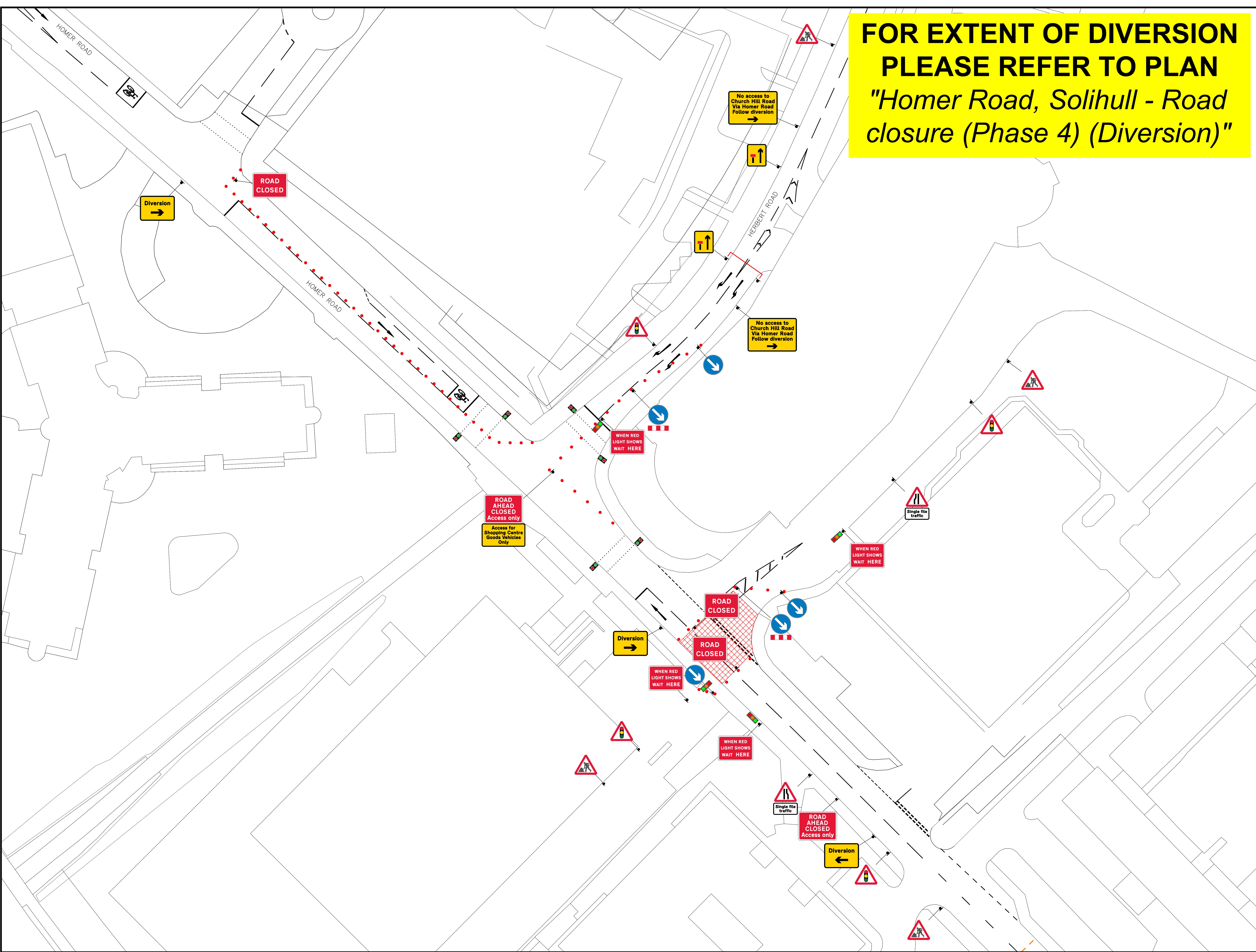
EXCALON TRAFFIC MANAGEMENT

NOTES

1. ALL SIGNS ARE AS PER CHAPTER 8.
2. DISTANCE BETWEEN SIGNS ARE NOT TO SCALE AND ARE FOR LAYOUT PURPOSES ONLY.
3. SIGNS SHOULD BE POSITIONED IN A SAFE WORKING SPACE.

KEY

- SIGN POSITION AND DIRECTION
- CONE
- ▨ EXTENT OF ROAD CLOSURE



EXCALON HEAD OFFICE
EXCALON YARD,
2 DUNCAN STREET,
SALFORD,
M5 3SQ



PROJECT
VIT058

DRAWING
(PHASE 4) HOMER ROAD,
SOLIHULL, B91 3QG,
ROAD CLOSURE (DETAIL)

DRAWN BY:	KC	DATE:	10/02/25
CHECKED BY:	ML	DATE:	10/02/25
APPROVED BY:	ML	DATE:	10/02/25
DRAWING No.	PHASE 4	REVISION	0
DO NOT SCALE FROM THIS DRAWING			

**FOR EXTENT OF DIVERSION
PLEASE REFER TO PLAN
"Homer Road, Solihull - Road
closure (Phase 4) (Diversion)"**

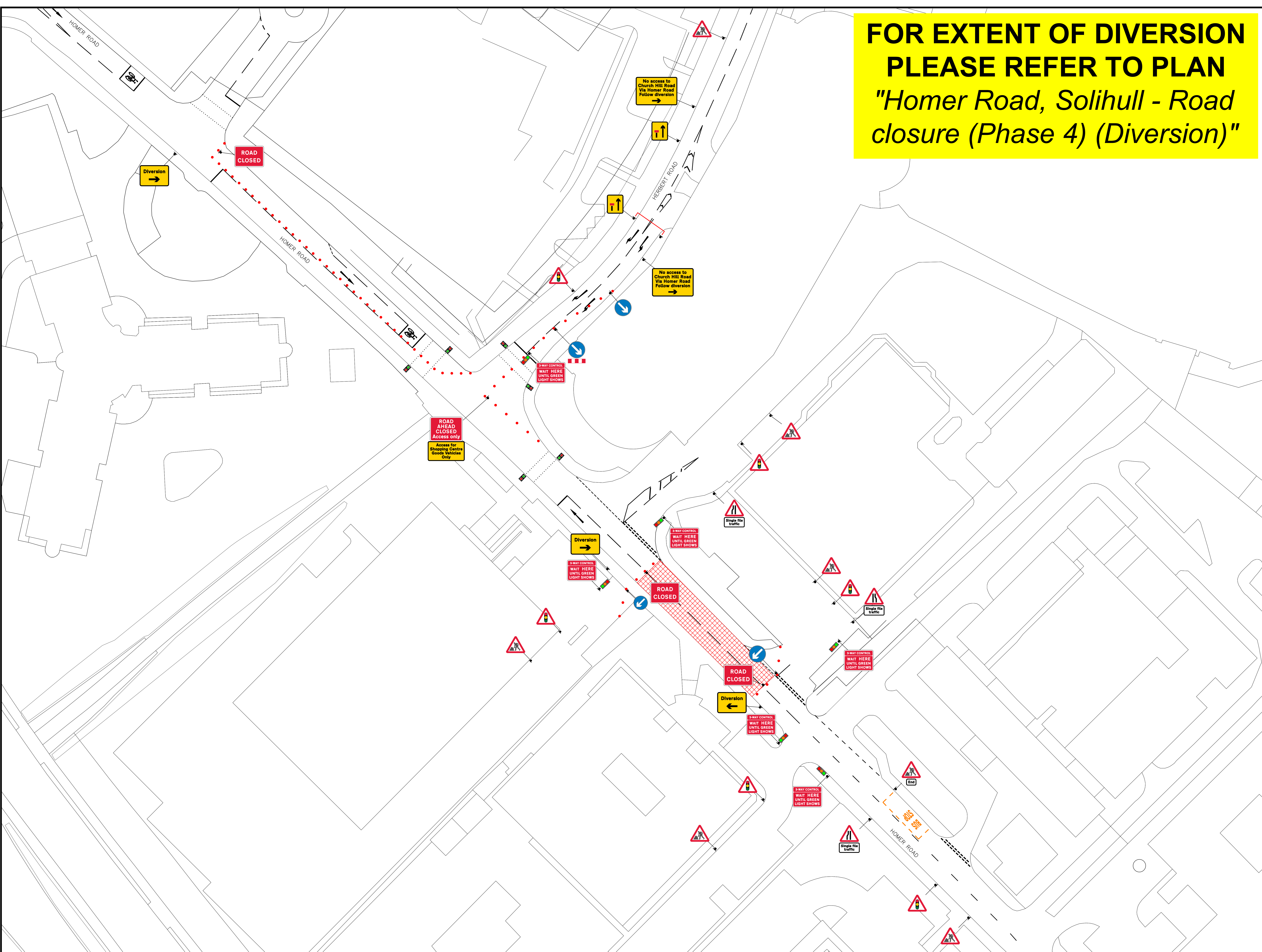
EXCALON TRAFFIC MANAGEMENT

NOTES

1. ALL SIGNS ARE AS PER CHAPTER 8.
2. DISTANCE BETWEEN SIGNS ARE NOT TO SCALE AND ARE FOR LAYOUT PURPOSES ONLY.
3. SIGNS SHOULD BE POSITIONED IN A SAFE WORKING SPACE.

KEY

- SIGN POSITION AND DIRECTION
- CONE
- ▨ EXTENT OF ROAD CLOSURE



EXCALON HEAD OFFICE
EXCALON YARD,
2 DUNCAN STREET,
SALFORD,
M5 3SQ



PROJECT
VIT058

DRAWING
(PHASE 4A) HOMER ROAD,
SOLIHULL, B91 3QG,
ROAD CLOSURE (DETAIL)

DRAWN BY:	KC	DATE:	10/02/25
CHECKED BY:	ML	DATE:	10/02/25
APPROVED BY:	ML	DATE:	10/02/25
DRAWING No.	PHASE 4A	REVISION	0
DO NOT SCALE FROM THIS DRAWING			