

**FOR EXTENT OF DIVERSION  
PLEASE REFER TO PLAN  
"Homer Road, Solihull - Road  
closure (Phase 8) (Diversion)"**

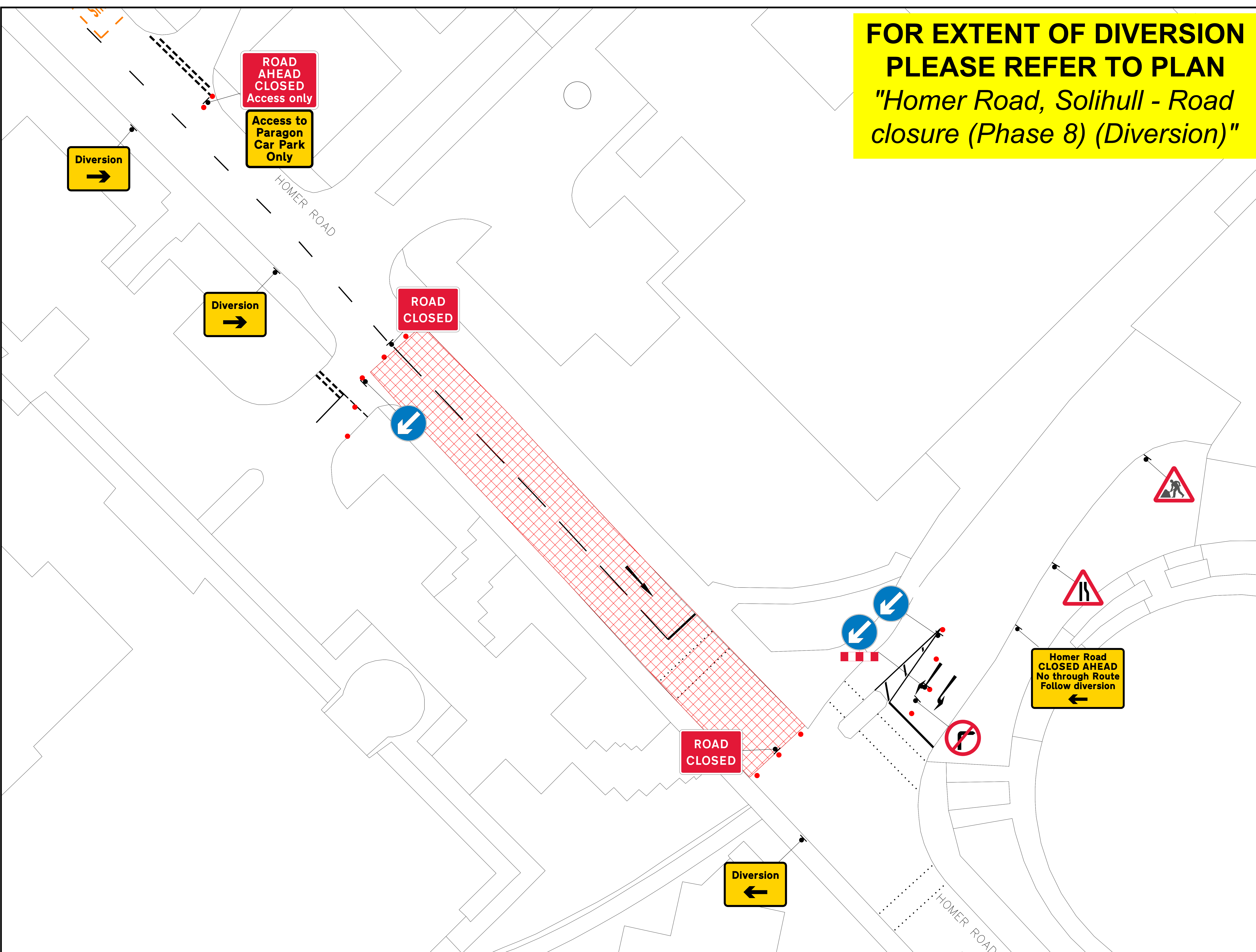
**EXCALON TRAFFIC MANAGEMENT**

**NOTES**

1. ALL SIGNS ARE AS PER CHAPTER 8.
2. DISTANCE BETWEEN SIGNS ARE NOT TO SCALE AND ARE FOR LAYOUT PURPOSES ONLY.
3. SIGNS SHOULD BE POSITIONED IN A SAFE WORKING SPACE.

**KEY**

- SIGN POSITION AND DIRECTION
- CONE
- ▨ EXTENT OF ROAD CLOSURE



EXCALON HEAD OFFICE  
EXCALON YARD,  
2 DUNCAN STREET,  
SALFORD,  
M5 3SQ



PROJECT  
VIT058

DRAWING  
(PHASE 8) HOMER ROAD,  
SOLIHULL, B91 3QL,  
ROAD CLOSURE (DETAIL)

DRAWN BY:	KC	DATE:	20/01/25
CHECKED BY:	ML	DATE:	20/01/25
APPROVED BY:	ML	DATE:	20/01/25
DRAWING No.	PHASE 8	REVISION	0
DO NOT SCALE FROM THIS DRAWING			