

Figure 2.1:
Solihull within the
strategic context of
the West Midlands

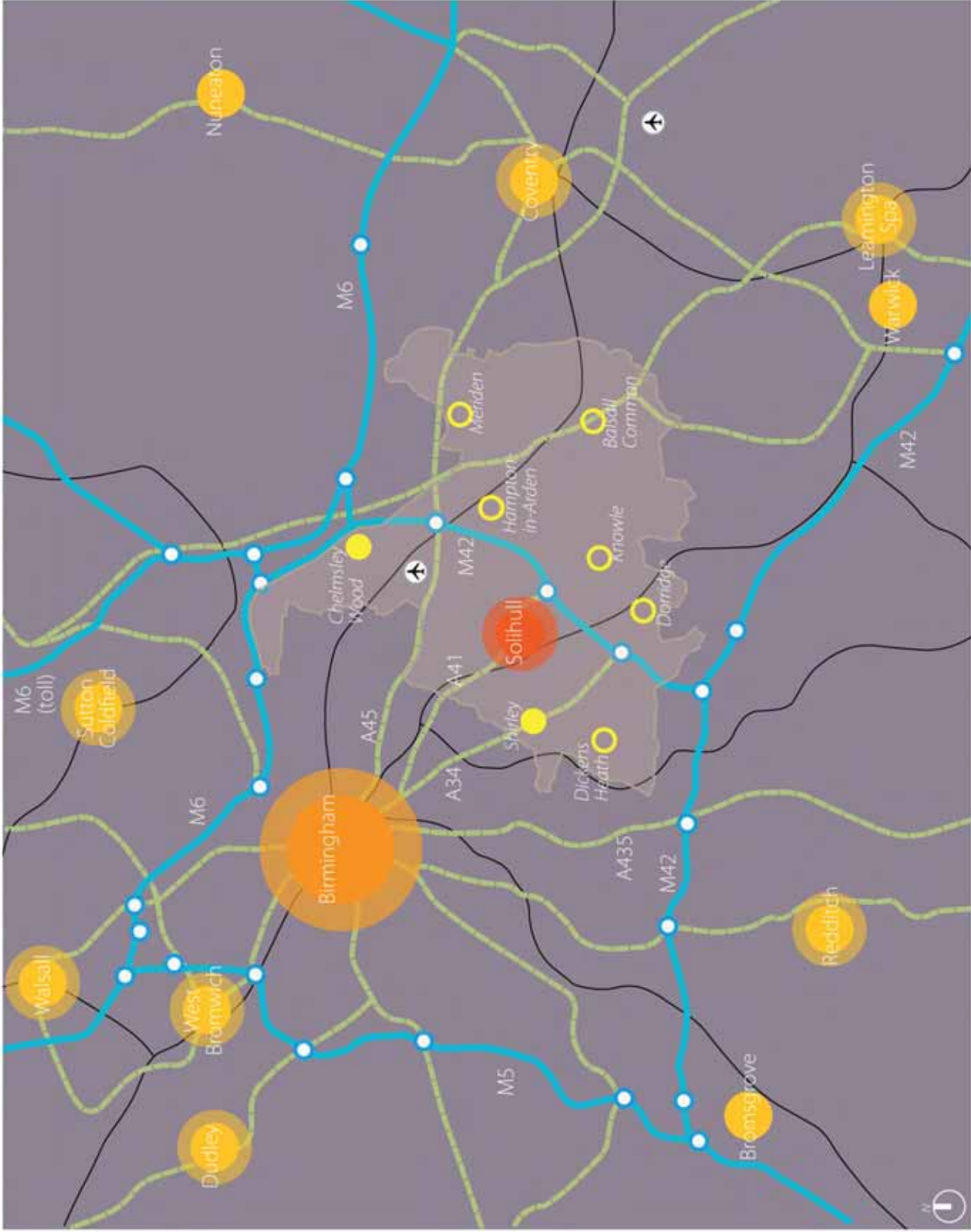


Figure 2.2:
Solihull
Town Centre
Boundaries



Figure 2.3:
Town Centre
Land Uses



Figure 2.4:
Landscape
and Open
Spaces

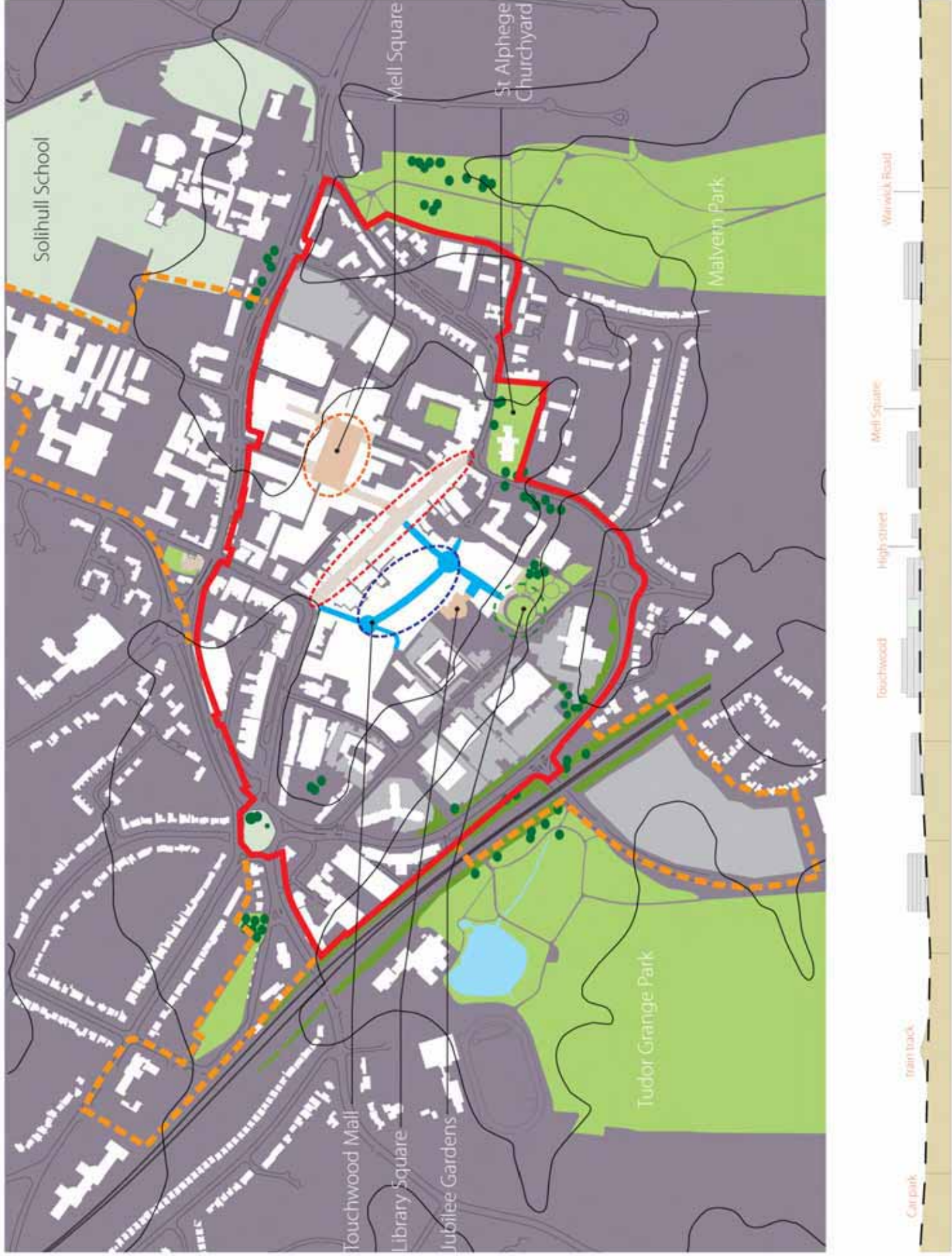


Figure 2.5:
Town Centre
Character
Areas

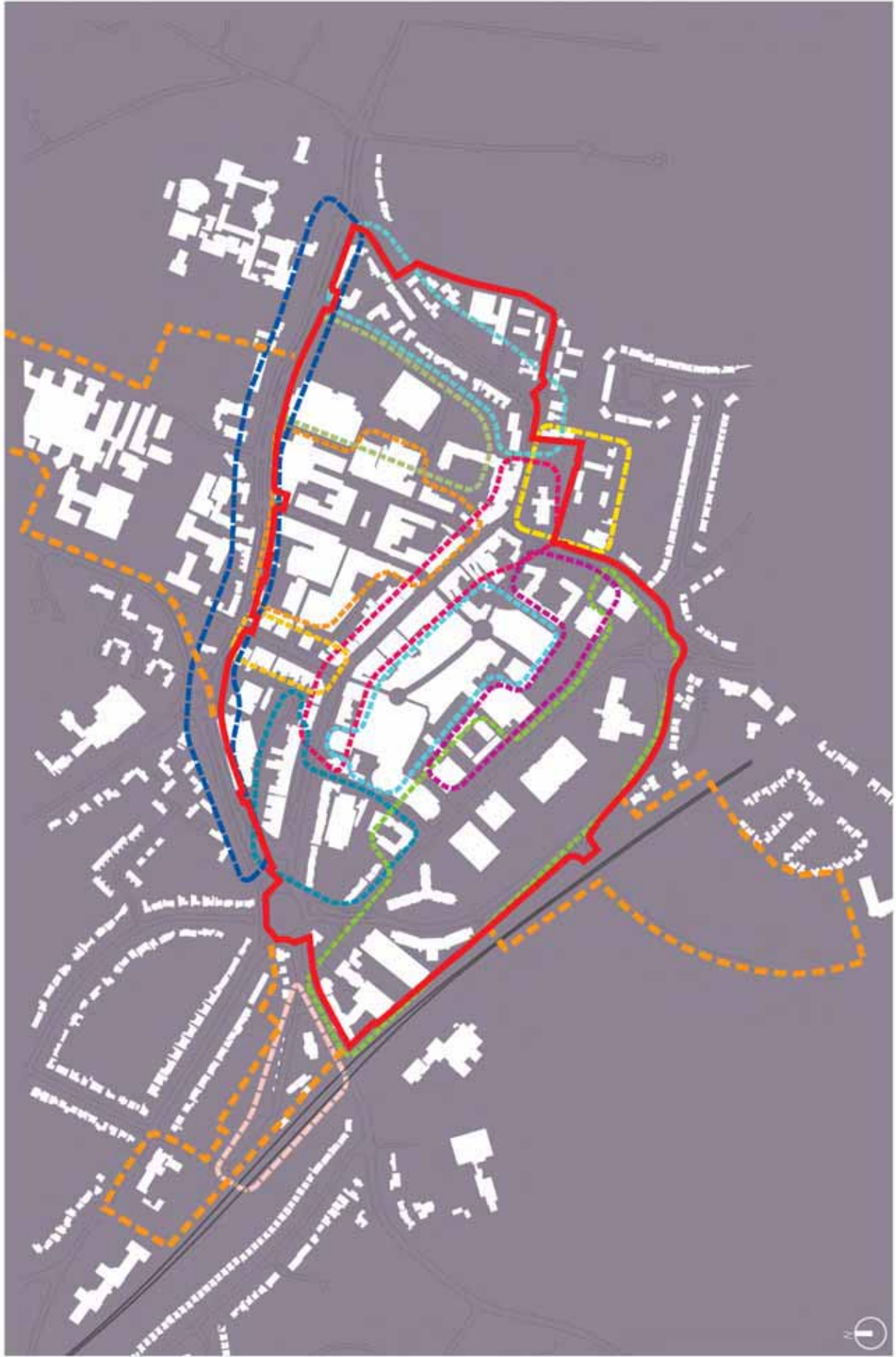


Figure 2.6:
Positive Town
Centre
Features



Figure 2.7:
Negative
Town Centre
Features

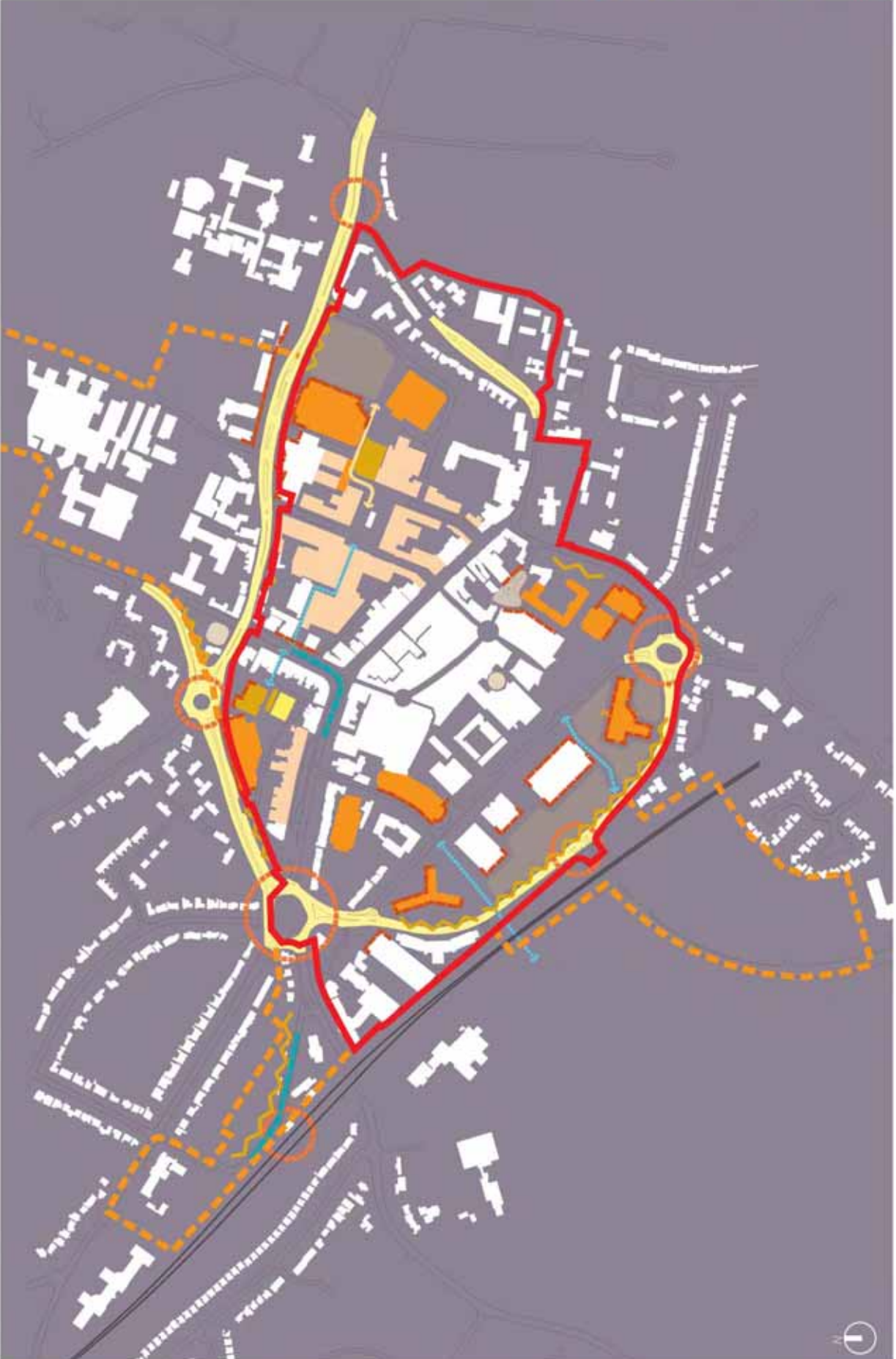


Figure 4.1: Key Opportunity Sites

- 1 Mill Square
- 2 Lodge Lane
- 3 Station Road
- 4 Police, Magistrates Court and Library
- 5 The Council Offices
- 6 Monkpath car park
- 7 The Station Quarter
- 8 Eastern Gateway site

- Key
- Opportunity sites
 - Site reference number
 - Proposed Town Centre boundary
 - Study Area boundary

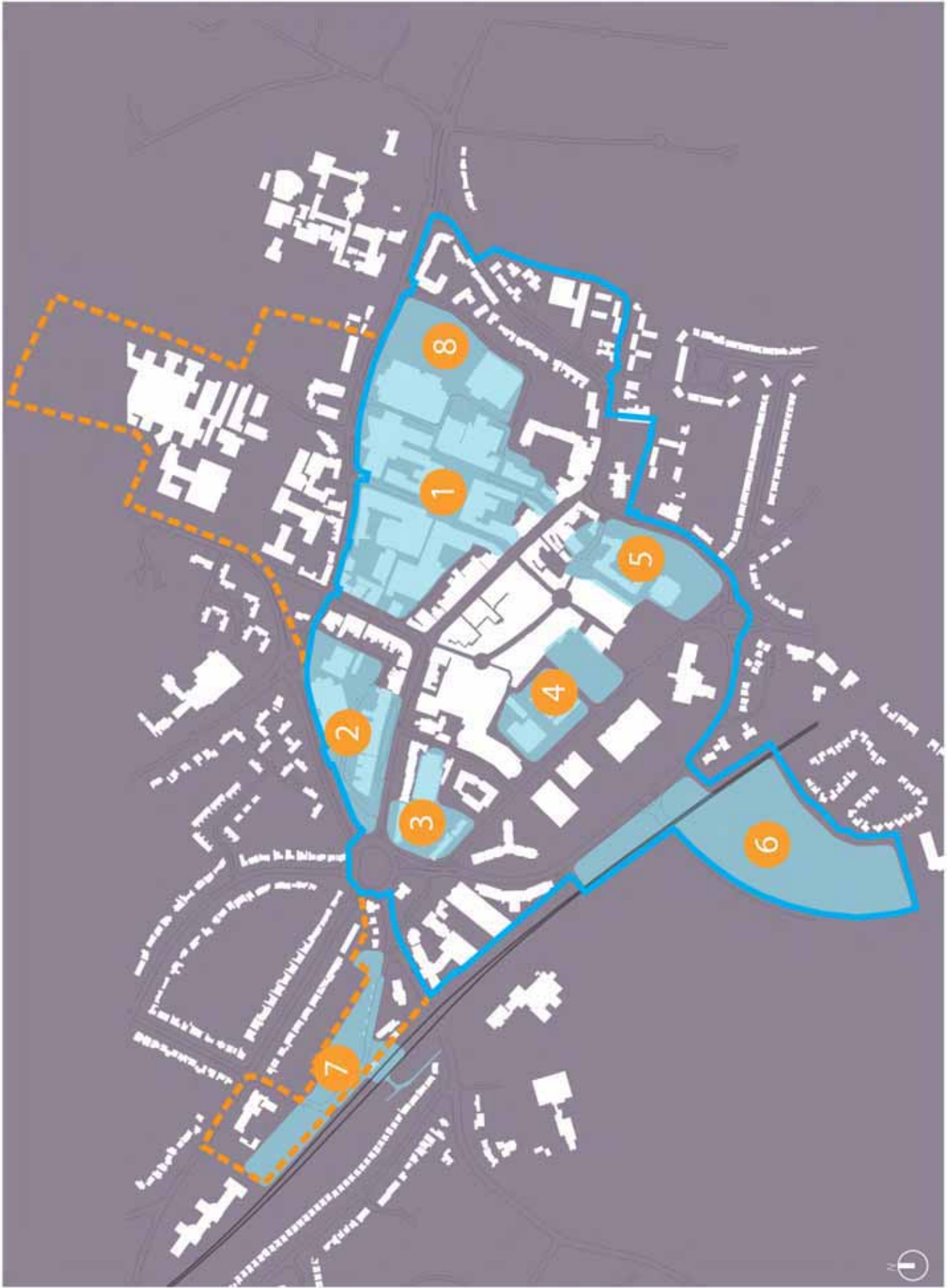


Figure 5.1:
Urban Form

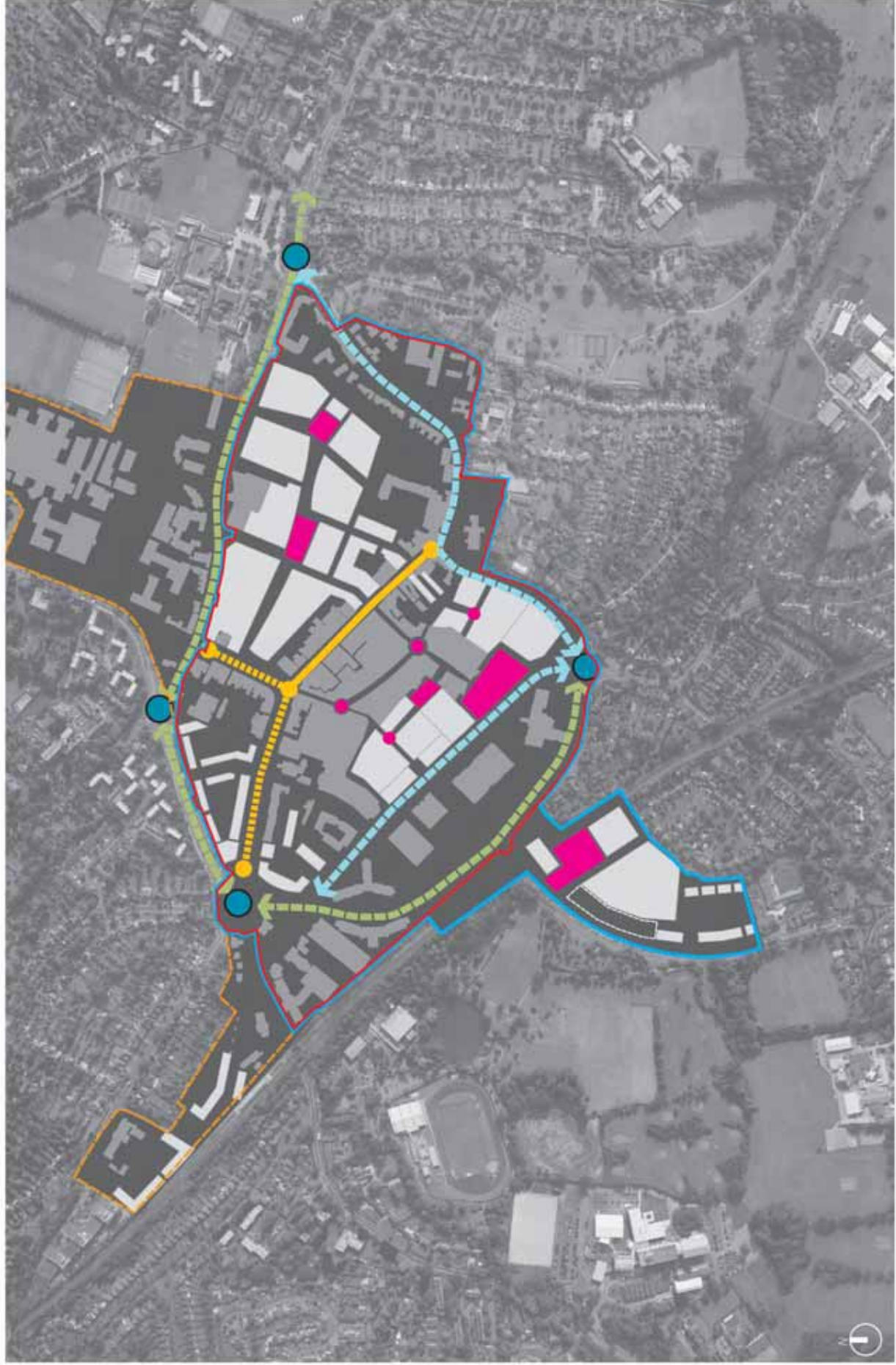


Figure 5.2:
Land Use -
Ground Floor



Figure 5.3:
Land Use -
Upper Floor

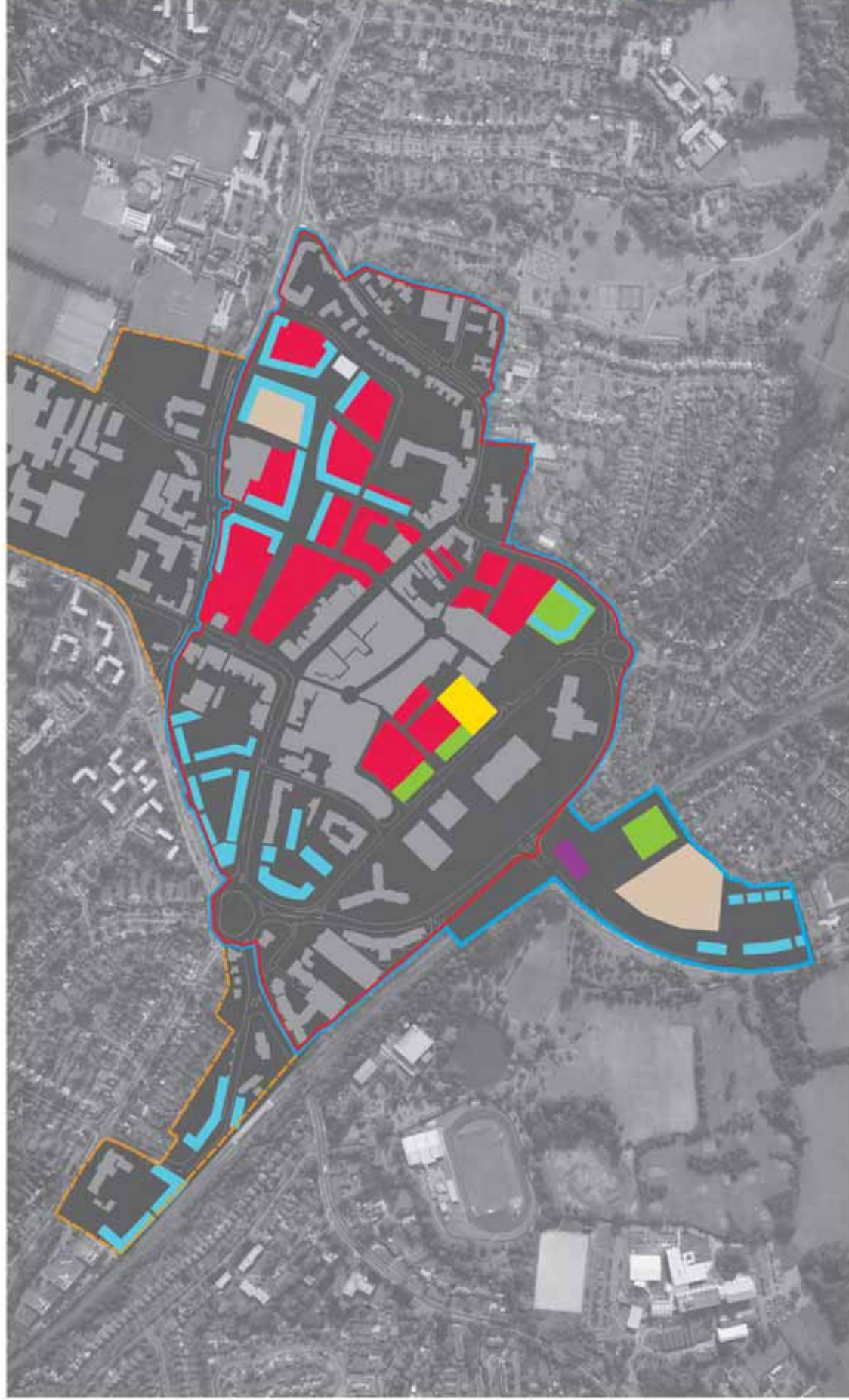
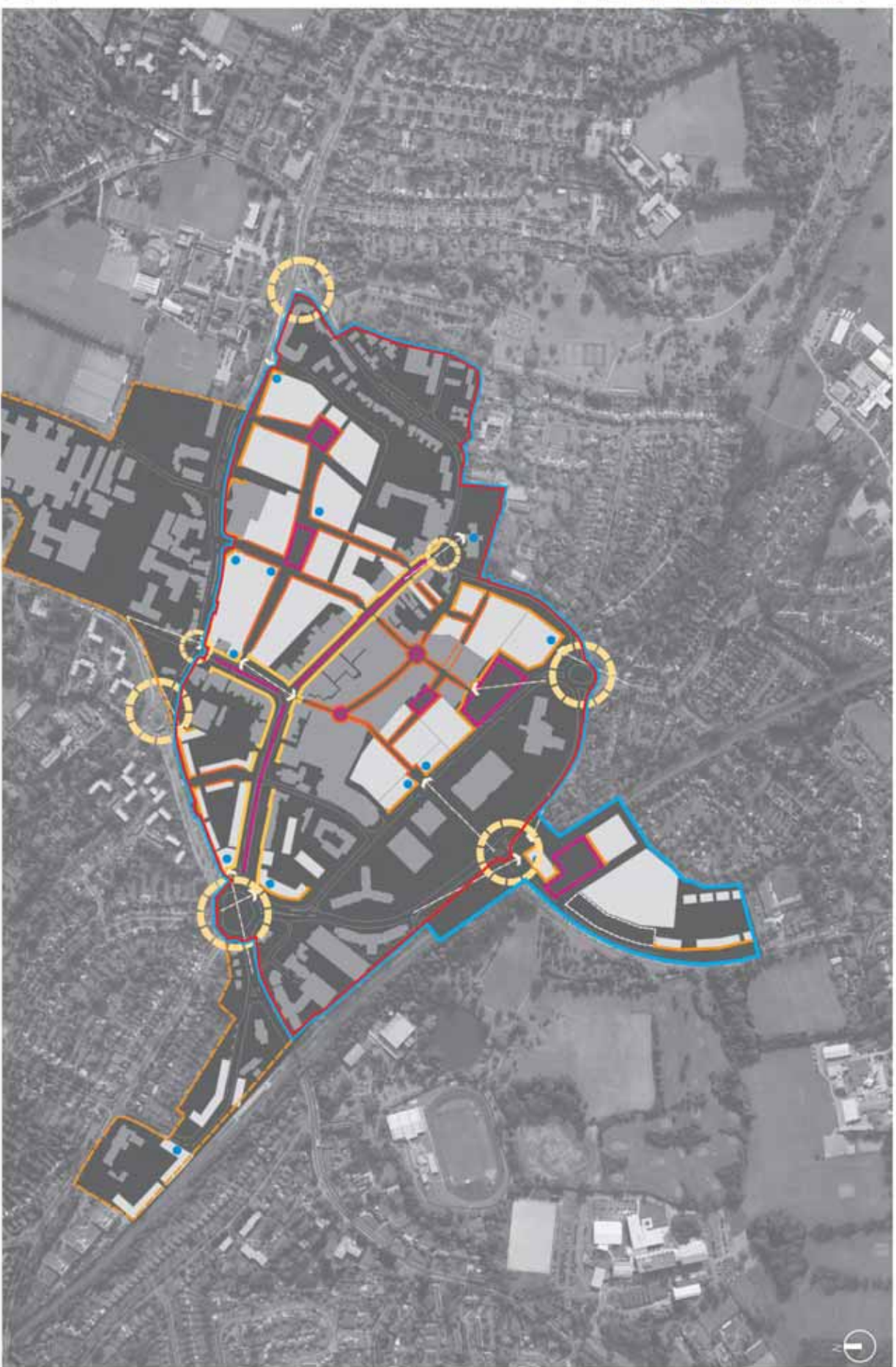


Figure 5.4:
Links and
Movement



Figure 5.5:
Townscape



- key**
- Existing buildings
 - Proposed new urban blocks
 - Key spaces
 - Primary frontages
 - Mall or Mews frontages
 - Other consistent frontages
 - Key gateways
 - Local gateways
 - Landmark opportunities
 - Key views
 - UDR town centre boundary
 - proposed town centre boundary
 - additional study area boundary

Figure 5.6: Overarching Spatial Strategy Diagram

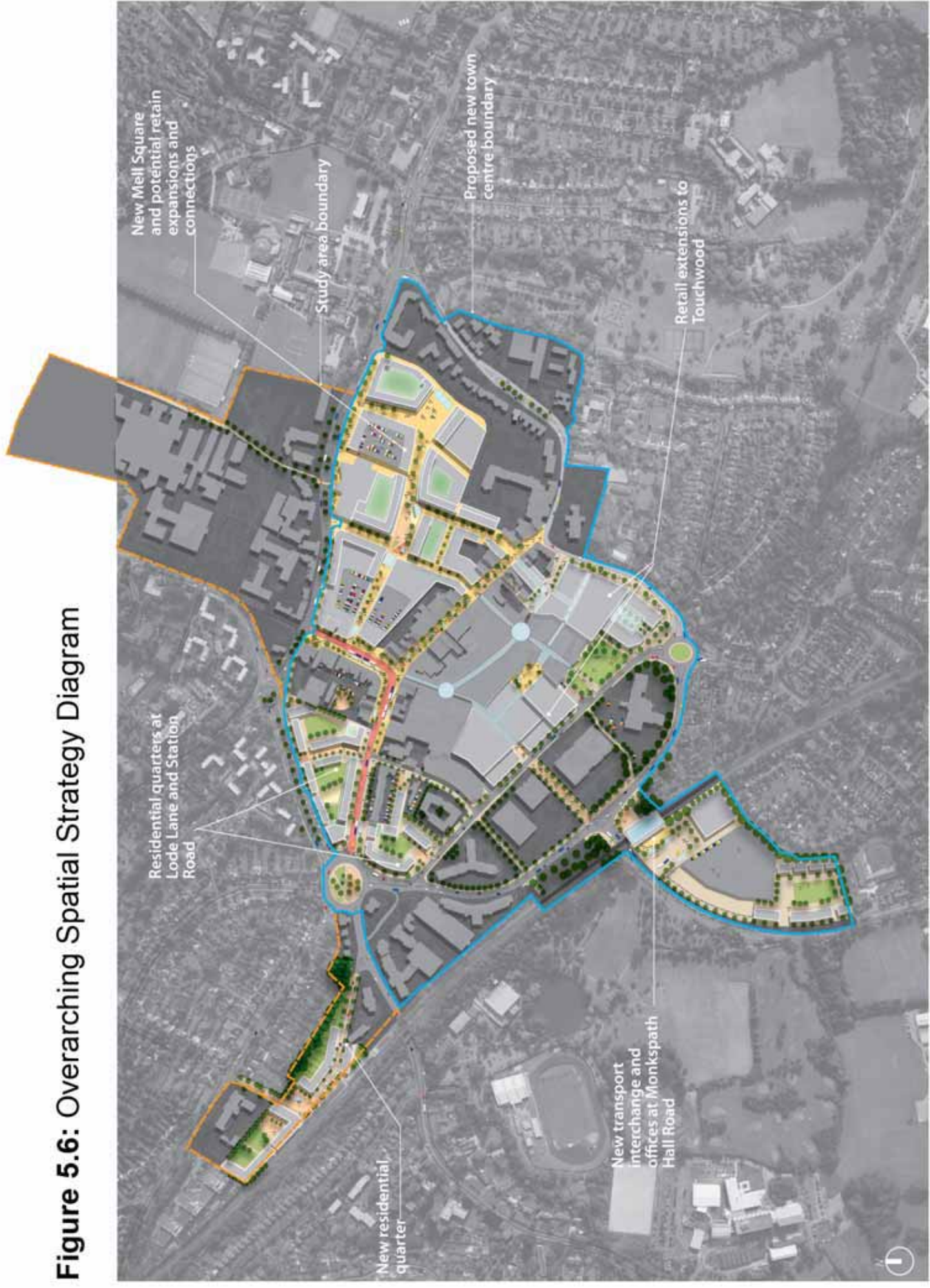


Figure 6.1:
Phasing
Strategy

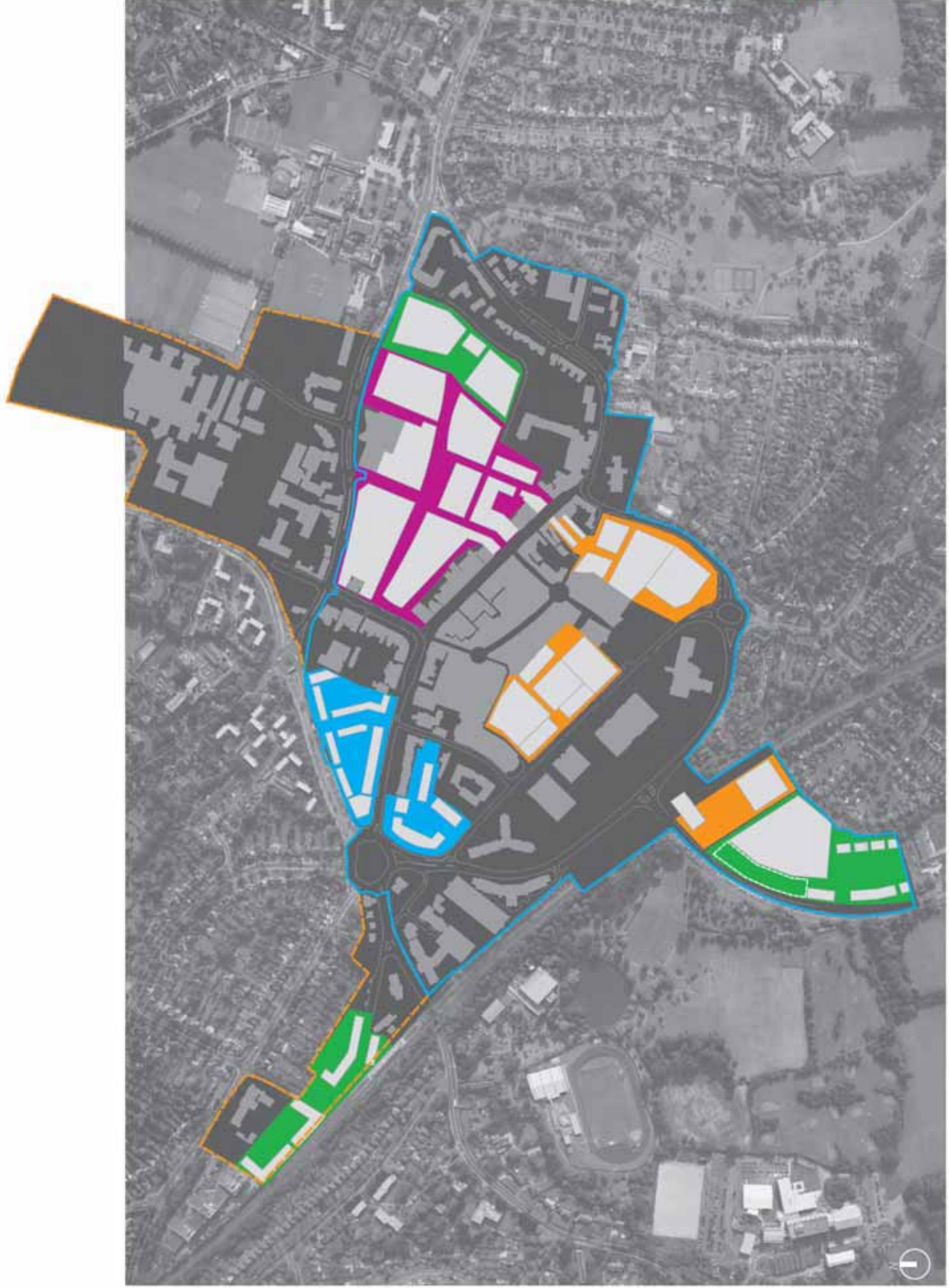


Figure 6.2: Phase 1

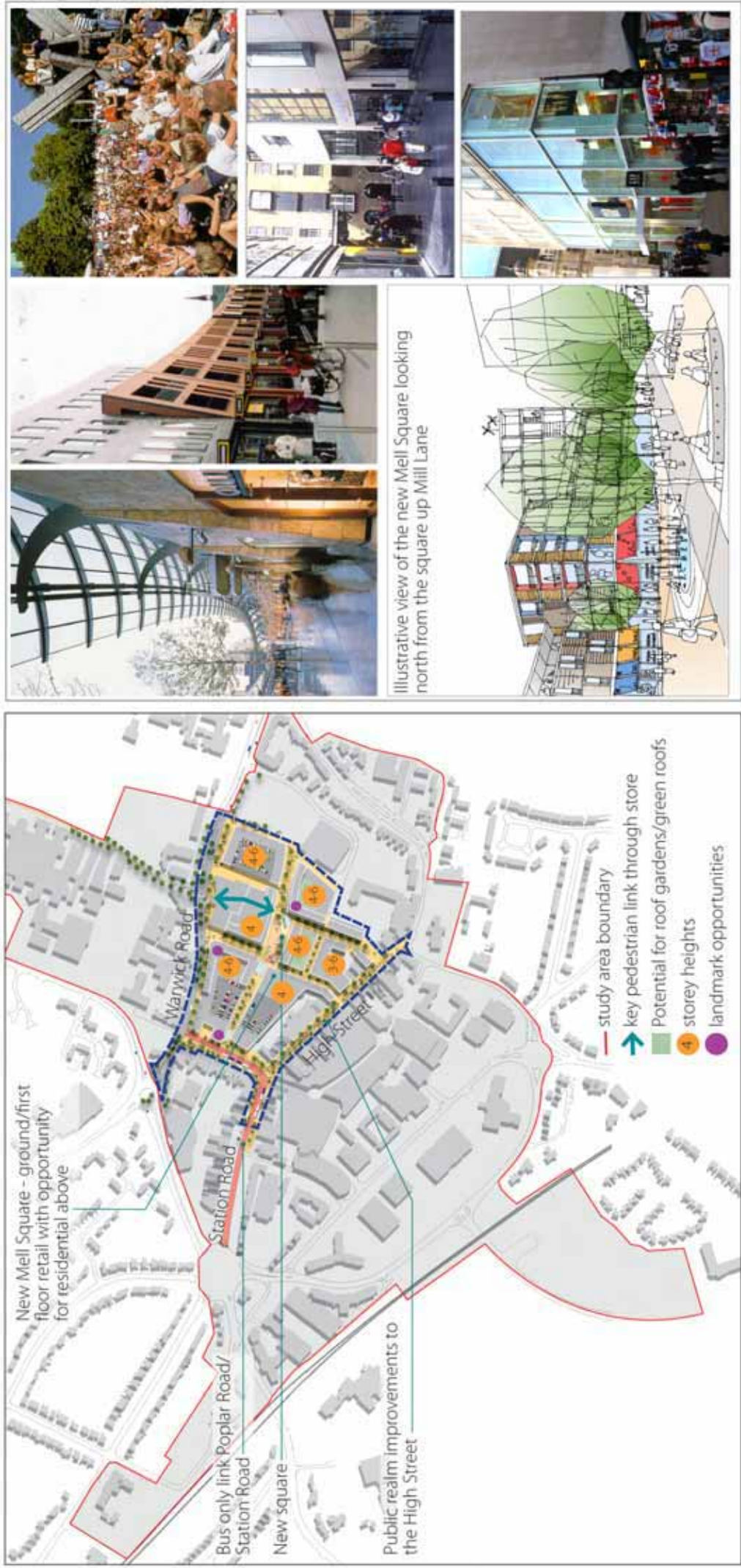


Figure 6.3: Phase 2



Figure 6.4: Phase 3



Figure 6.5: Phase 4

