

Solihull Green Prospectus: delivering a sustainable, low carbon Solihull

The world around us is changing - by 2050 the Earth's population is expected to increase from 7 billion to over 9 billion and the world's economy is projected to nearly quadruple, with growing demand for energy and natural resources as a result.

England's natural capital – the elements of the natural environment which provide valuable goods and services to people such as clean air, clean water, food and recreation – is in long-term decline. If economic growth and well-being is to be sustained, natural capital has to be safeguarded.

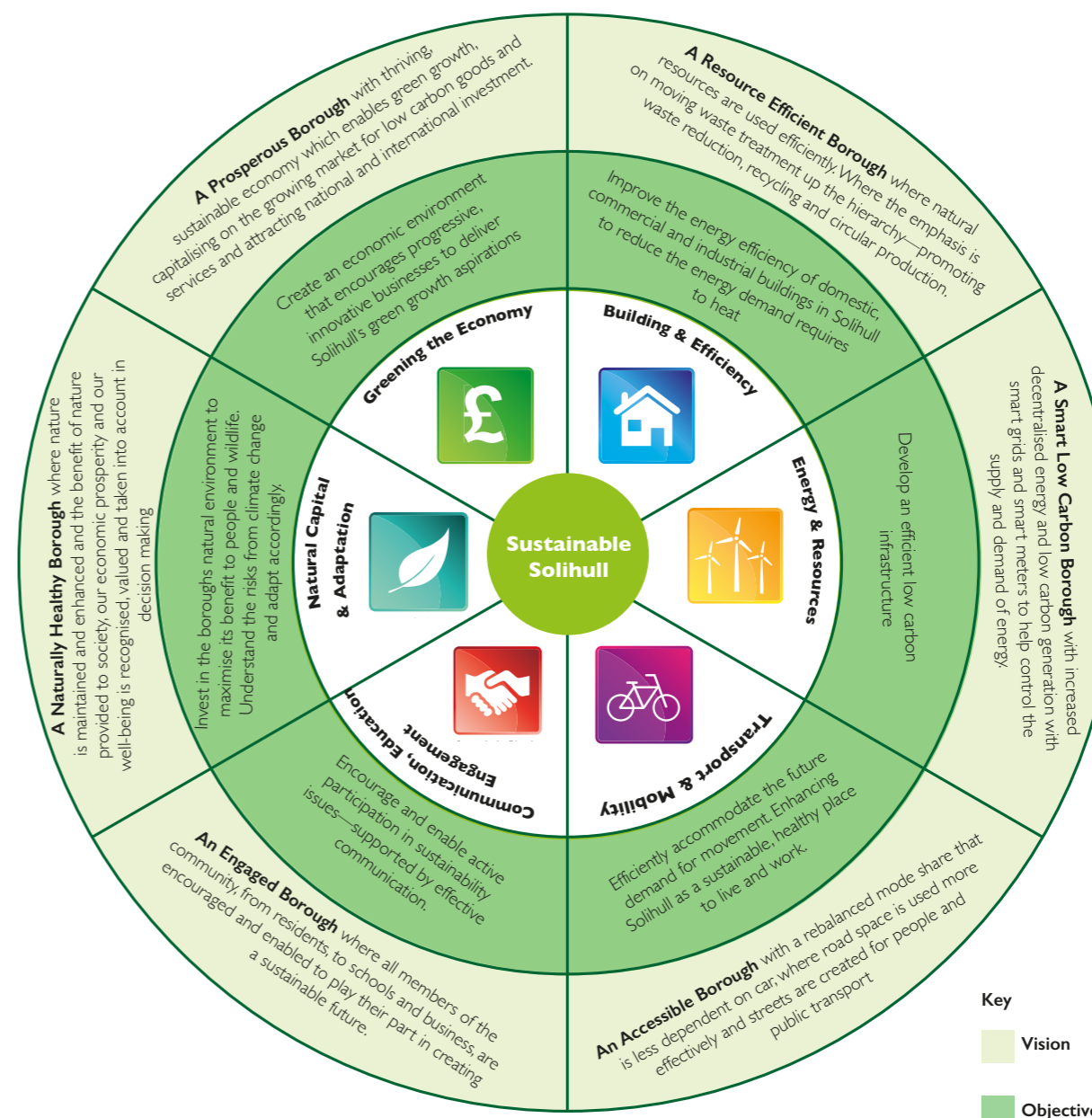
Climate change too is having a profound impact with more frequent and intense rainfall and flooding, and increased likelihood of drought and heatwaves. Limiting climate change will require substantial and sustained reductions in greenhouse gas emissions. Past and present emissions mean that some degree of climate change is inevitable, we must therefore increase our resilience to the impacts of a changing climate.

Not addressing these issues will lead to a degraded environment, impact on our health and well-being and on our competitiveness and ultimately be a constraint to growth.

The Growth Agenda - Solihull Council is embarking on a strategy of 'Managed Growth' through the promotion of the 'UK Central' which brings together the economic assets of the borough. Whilst the degree of development and national-level infrastructure being located in the Borough presents huge opportunities for us, we must plan carefully to ensure that the potential negative impacts from growth are minimised and opportunities for delivering sustainable growth are maximised.

This Green Prospectus will help articulate Solihull's low carbon vision, ensuring that - through managed growth - we are at the forefront of the UK's transition to a low carbon economy. It is informed by a number of current and emerging borough and GBS-LEP wide strategies and activity - all of which provide the strategic direction for sustainability across the region. Our vision is shared by the Greater Birmingham and Solihull Local Enterprise Partnership who want to re-establish Greater Birmingham's role as the major driver of the UK economy outside London. Developing the low carbon and environmental technologies sector and creating more effective green and blue infrastructure and waste and resource use practices is seen as key to achieving that ambition.

Green Prospectus Themes and Objectives



Current Good Practice

Energy and Resources

SMBC is a partner in the company which runs the Coventry Incinerator and sends all of its black bin waste to the site. SMBC's input contributes between 25 and 30% of the incinerators feedstock and makes a significant contribution to the sites electricity production (which feeds into the national grid) and district heating system.

Buildings and Efficiency

'OWLS' - an innovative external wall insulation pilot using the Beattie Passive T- Cosy System solution on a low rise block in North Solihull - fully funded by Innovate UK.

Successful award winning Winter Warmth Campaign delivered with partners Public Health and Age UK.

Communication, Education and Engagement

Love Solihull – a community focused initiative all about inspiring, encouraging and enabling everyone from across the borough to create a place we can all take pride in.

Fairtrade – since 2010 Solihull has been a Fairtrade Borough.

Ecoschools – Solihull has 12 Green Flag schools. With over 80% of schools registered on the Eco-schools programme it is ranked in the top 20 performing Authorities nationally.

Natural Capital and Adaptation

Kingfisher Country Park – a 30 year partnership project with Birmingham City Council to protect and enhance the River Cole corridor for people and wildlife.

Solihull has over 1500 acres of parks and open spaces this includes 21 Local Nature Reserves and 15 allotment sites. In addition the borough has 107 Local Wildlife Sites and 5 Sites of Special Scientific Interest.

Greening the Economy

Your Green Future 2015 – an interactive green skills event for schools involving over 360 students. Delivered in partnership with Severn Wye Energy Agency, Solihull College, Rotary International and Solihull Soroptimists and supported by local businesses.

Transport and Mobility

Improved public transport and cycling infrastructure through major projects such as Solihull Gateway, Hurst Lane Place, North Solihull Strategic Cycle Network and Lode Lane improvements.

Active travel initiatives helping communities, schools and businesses to travel more sustainably - now including the SWITCH brand.

Our approach - focuses on the following key principles:

- **Opportunity** – capitalise on the opportunities presented to us by the growth agenda, new funding streams and new markets for green technologies, goods, and services. Estimates suggest that up to 20 million jobs could be created worldwide by 2030 in renewable energy generation and distribution.
- **Valuing Natural Capital** – focusing on GDP as a measure of economic progress generally overlooks the contribution of natural assets to wealth, health and well-being. We will adopt an evidence based approach and seek to embed natural capital and well-being in decision making process and development and infrastructure projects.
- **Efficiency** – work towards greater efficiency in the use of resources and natural assets, including enhancing productivity, reducing waste and energy consumption.
- **Innovation and Knowledge-sharing** – use our influence to create the right conditions for innovation - recognising it plays a key role in greening growth.
- **Collaboration** – it is clear that Solihull cannot work in isolation – it's in everyone's interest that we work collaboratively with the community and partners such as the Green Commission, through a range of mechanisms to find solutions that will lead to a smarter, more sustainable Solihull.

Sustainability roadmap

Indicators



Greening the Economy

GBS-LEP Growth Strategy
Solihull Local Plan
HS2 Growth Strategy
GBS-LEP SUD Strategy
UK Central Masterplan
The Interchange Prospectus

Continue to engage in the Green Commission to support Solihull and GBSLEP wide activity including development of green growth metrics/indicators

Ensure Solihull's key opportunities are reflected in the HS2 Environmental Prospectus

Deliver activity to support the green skills agenda such as Your Green Future

Adopted Local Plan in place

Have in place an understanding of the sustainability opportunities arising from HS2/UKC - in particular around energy and waste/resources

Submission of Local Plan review

Development detailed Sustainability Vision and plan for UKC Zone I – informed by relevant studies.

TBC



Energy and Resources

Waste Management Strategy
Town Centre District Heating Feasibility Study
GBS-LEP Low Carbon Energy Plan
GBS-LEP Heat Network Feasibility Study

Continue to deliver the Waste Strategy Action Plan—focus on education, engagement and effective/viable ways of reducing food waste.

Begin to take forward Solihull's key opportunities for decentralised energy and heat networks – in particular capitalise on opportunities around HS2/UKC Zone I

Achieve Waste Strategy 2020 targets including 60% recycling rate, waste arisings of 440kg/person/year and maximum of 10% waste to landfill

Have in place a detailed understanding of Solihull's key opportunities for decentralised energy

Continue to engage in the Green Commission to support Solihull/GBS-LEP wide activity. Capitalising on opportunities for collaboration and shared learning.

Have in place an understanding of the opportunities and investment required to support achievement of long term carbon reduction targets.

Have in place a detailed understanding of Solihull's energy consumption and CO2 emissions, current/planned energy projects, future investment requirements, delivery vehicles and opportunities

Household Combined Recy-ling and Composting rate
Household Waste to Land-fill
Greenhouse Gas Emis-sions data (by sector)



Buildings and Efficiency

Council Carbon Management
Home Energy Efficiency and Affordable Warmth Strategy
Winter Warmth Programme

Deliver short term carbon emissions reduction targets for key council emitters

Establish longer term carbon emission reduction targets for key council emitters

Deliver medium term actions of the HEEAWS

Capitalise from the learning gained from the MICE I Innovation Project (where feasible and viable)

Capitalise from the learning gained from the OWLS—Beattie Passive T– Cosy Innovation Project (where feasible and viable)

Deliver Capital Programme and Eco-funded External Wall Insulation Project for 550 SCH homes

Deliver short term actions of the HEEAWS

Fuel Poverty
ECP Ratings
SCH Stock Condition
Carbon Emissions from council operations



Transport and Mobility

West Midlands Strategic Transport Plan
A City Blueprint for Carbon Refuelling Infrastructure
Solihull Connected Green Paper
West Midlands Movement for Growth
GBS-LEP Low Carbon Transport Study

Town Centre Masterplan

Solihull Connected White Paper in place

Production of Solihull Connected Technology Roadmap to inform delivery of low emission vehicle infrastructure and other innovations.

TBC

Undertake Solihull Connected Technical Studies

Undertake Solihull Connected Technical Studies

Scoping work on Technology Roadmap carried out, quick wins identified

Delivery of short and medium term actions to achieve overarching Solihull Connected Vision and Objectives.



Natural Capital and Adaptation

Green Infrastructure Study
Green Spaces Strategy
ShRimP—Solihull River Corridor Improvement Plan
Nature Conservation Strategy
Woodland Strategy
Local Flood Risk Management Strategy

Support Development of the Natural Capital Planning Tool

Work with partners, including the Green Commission to develop the Ecosystem Services/ Natural Capital Accounting approach and 25 year Natural Capital plan

Natural Capital and Wellbeing embedded in infrastructure and community projects

GBS-LEP is on the way to being a biophilic region—rich in nature and resilient by 2040

Develop the 'More Bigger, Better and Joined GI Delivery Plan—focus on UKC/HS2 opportunities and HS2 Environ-mental Prospectus

Develop Sustainable Drainage Systems (SuDS) - particularly around UKC/HS2

Continue to deliver ShRimP

Deliver early ShRimP Actions—aligned to Strategic Housing Sites

Green space under positive management

Sustainable management of council owned woodland

Local Green Space Standards
Single data list (DEFRA)
Number of woodland management plans for woodlands over 3 hectares



Communication Education and Engagement

Sustainable Schools
Focus on Food
Love Solihull
Solihull Neighbourhoods in Bloom
Health and Wellbeing Strategy

Deliver the Health Development Action Plan including Focus on Food Actions

Build on Ashden 'Less CO2 Programme for schools'

Continue to support schools to become more sustainable

Renew Fairtrade Borough Status

Develop a communications plan to promote action and engagement—aligned to the GBS-LEP and the Green Commission

Support Fairtrade Fortnight 2017

Increase the number of communities and businesses engaged in meaningful environmental improvement activities through programmes such as Love Solihull

TBC

Short Term Actions 2016-2017

Medium Term Actions 2017-2020