

Aerial view from playing fields. (South west)

Lighting as 21 July 2:00pm



Aerial view from Sans Souci. (North west)

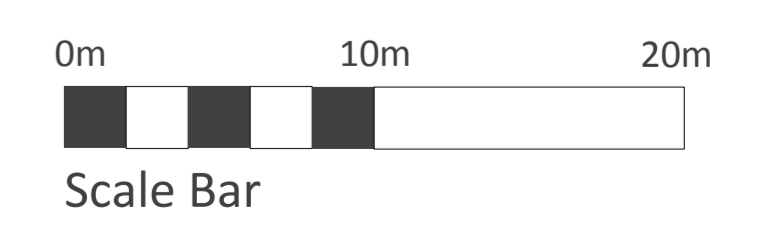
Lighting as 21 June 3:00pm

- Key**
- 1 Tanworth Lane
 - 2 Tanworth Surgey
 - 3 Sans Souci
 - 4 Nursery
 - 5 Playing Fields
 - 6 Shared Vehicle Access
 - 7 Pedestrian Access
 - 8 Nursery Car Park
 - 9 Nursing Home Car Park
 - 10 Main Entrance
 - 11 Sensory Gardens

Note: Landscaping shown is indicative only and will be developed as part of the detailed design process.



Proposed Site Plan





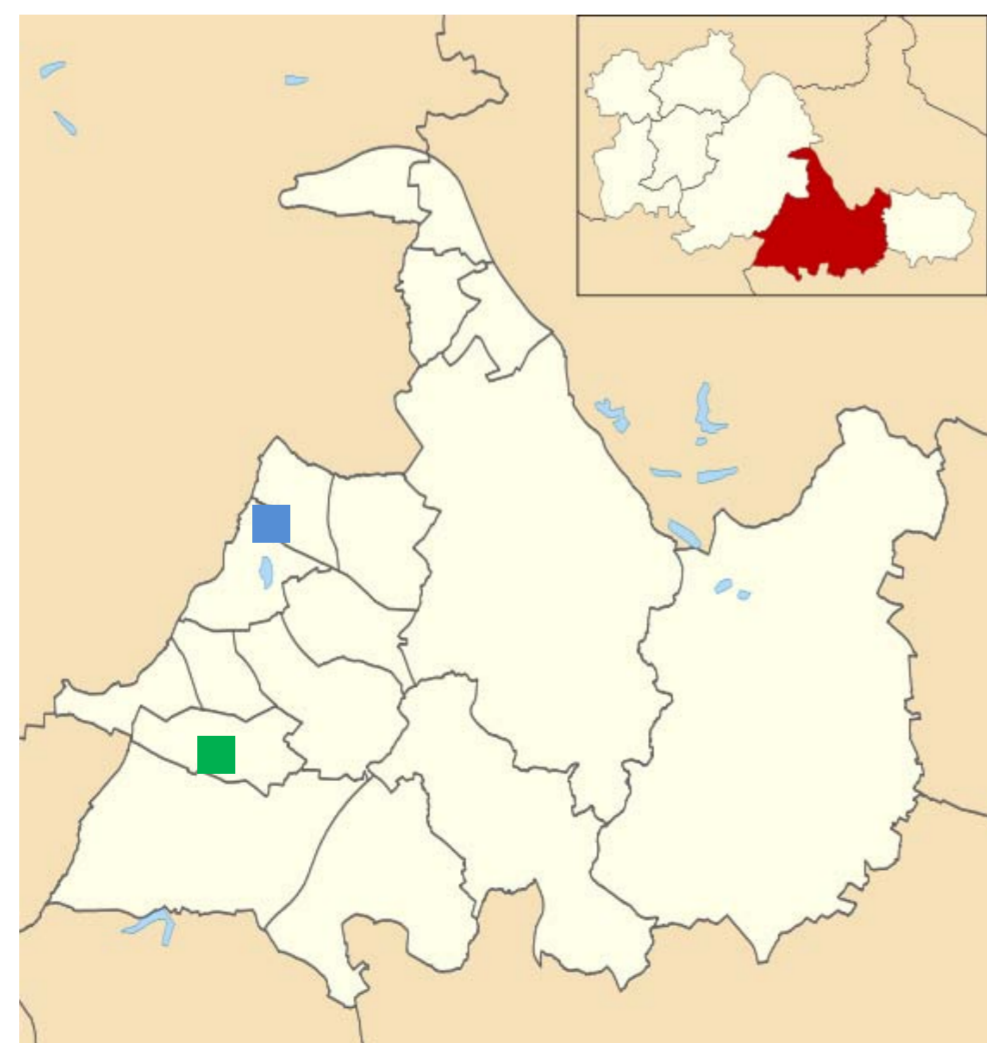
View from First Floor Terrace



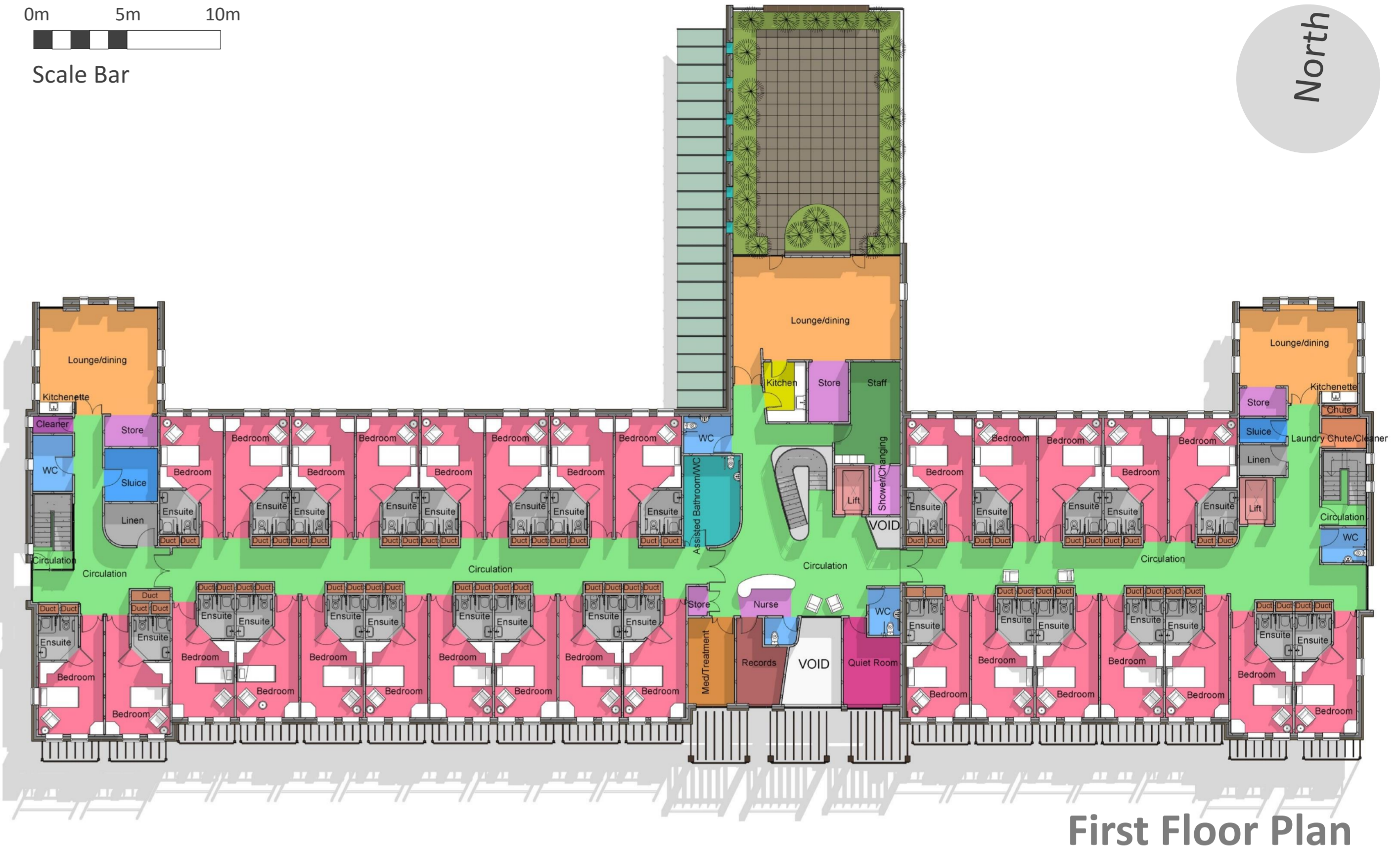
Internal View from Dining Room

Brookvale Nursing Home: ■
 Demolished

Tanworth Nursing Home: ■
 Proposed



Location within SMBC



First Floor Plan



Ground Floor Plan



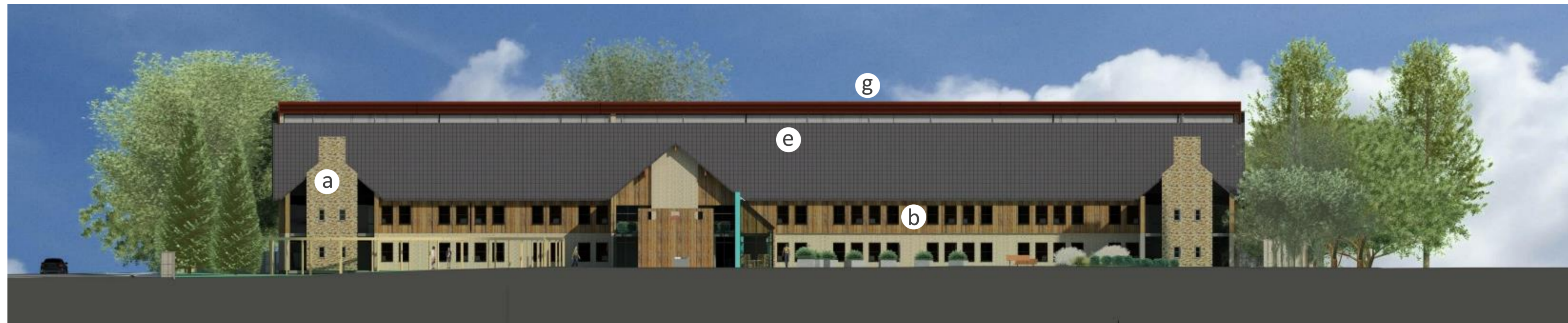
South Elevation

View from car park: Lighting as 21 October 1:00pm

Materials Key

- Brick/Facing Block (a)
- Timber Cladding (b)
- Coloured Render (c)
- Photovoltaic Cells + Solar Thermal (d)
- Roof Tiles (e)
- Timber Solar Shading (f)
- Natural Ventilation Vent (g)

Note: Landscaping shown is indicative only and will be developed as part of the detailed design process.



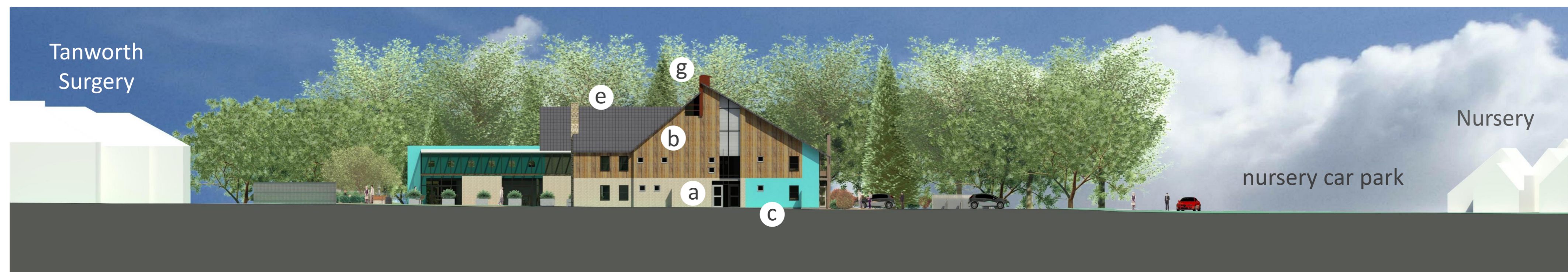
North Elevation

View from rear gardens: Generic lighting conditions



East Elevation

View from Tanworth Lane (trees not shown): Generic lighting conditions



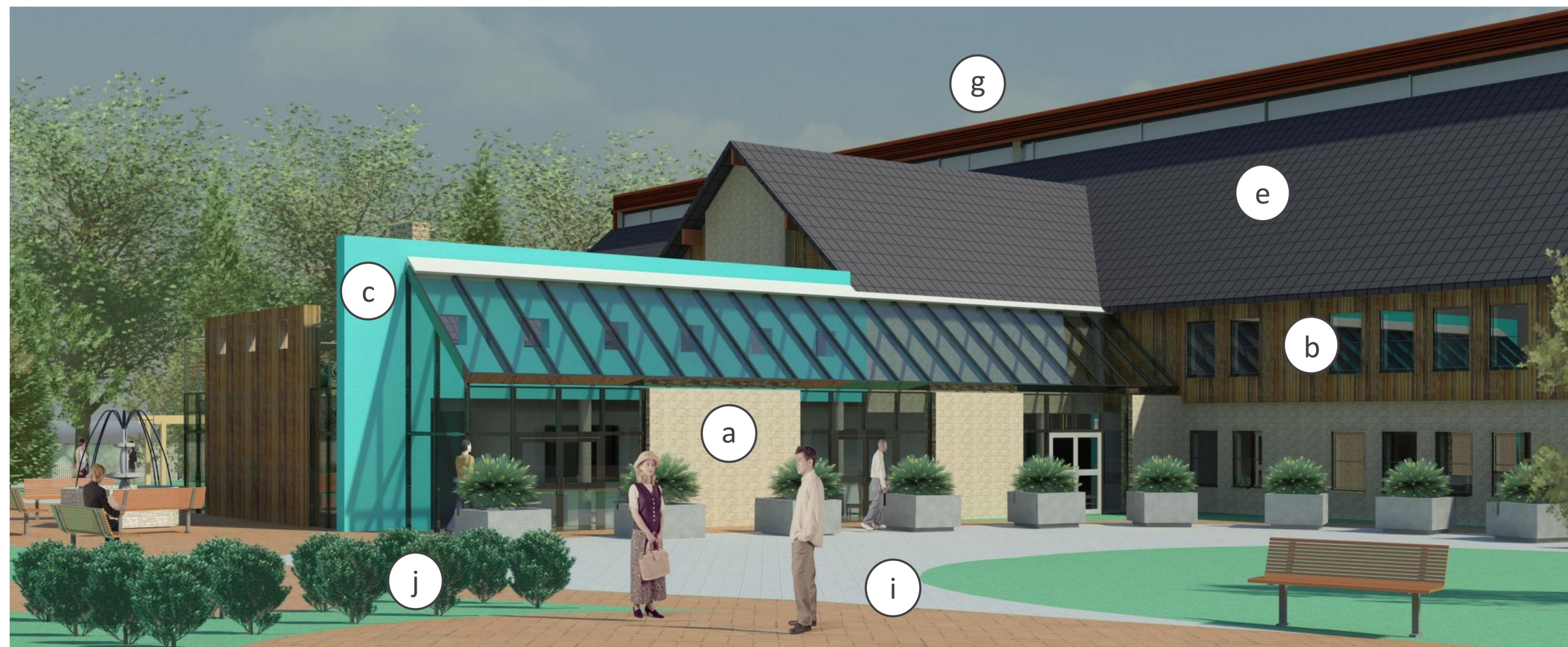
West Elevation

View from Sans Souci Gardens: Lighting as 21 June 3:00pm



Perspective View from Nursing Home Car Park

Lighting as 21 August 1:00pm



Perspective View from Nursing Home Rear Gardens

Lighting as 21 June 3:30pm

Materials Key

Brick/Facing Block (a)

Timber Cladding (b)

Coloured Render (c)

Photovoltaic Cells + Solar Thermal (d)

Roof Tiles (e)

Timber Solar Shading (f)

Natural Ventilation Vent (g)

Tarmac (h)

Paving (i)

Proposed Planting (j)

Note: Landscaping shown is indicative only and will be developed as part of the detailed design process.