

## Life Expectancy

### Headlines

- Life expectancy for both males and females has increased steadily since 1991
- Life expectancy for Solihull males and females above England average
- Life expectancy ~4 years higher for Solihull females than males
- Gap in life expectancy between the most deprived 10% and the least deprived 10% is ~ 10 years for both males and females
- On average Solihull residents can expect to live until 65 without disability
- The most deprived areas of Solihull will experience ~20 years of disability at the end of their lives commencing in mid 50's
- The least deprived areas experience ~13 years of disability at the end of their lives commencing in early 70's
- Solihull compares well with its statistical neighbours

### 1. Current Picture: 2011-13<sup>1</sup>

Life expectancy at birth		
	Male	Female
Solihull	80.3	84.8
England	79.4	83.1
Healthy Life expectancy at birth		
	Male	Female
Solihull	65.1	65.5
England	63.3	63.9
Life expectancy at 65		
	Male	Female
Solihull	19.2	22.6
England	18.7	21.1
Gap in life expectancy(SIol)		
	Male	Female
Solihull	10.7	9.7
England	9.1	6.9

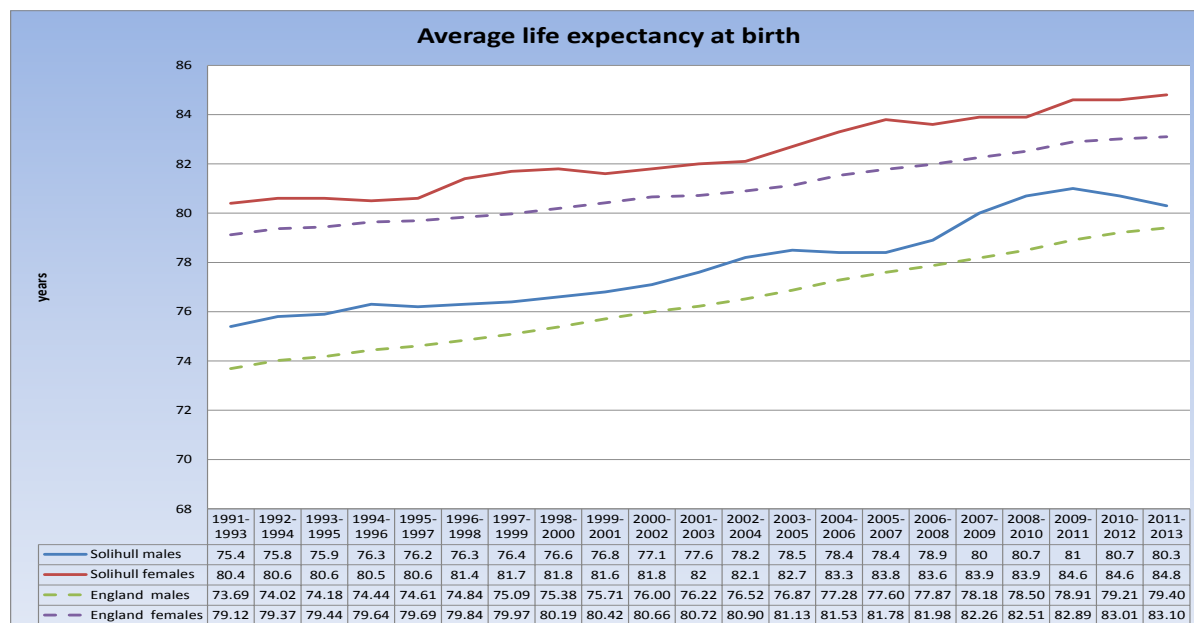
### 2. Definitions

**Average life expectancy at birth** = number of years someone born in the period could be expected to live on average, if current death rates applied

**Healthy life expectancy at birth/disability free life expectancy**= number of years someone born in period could be expected to live on average without a disability

**Slope Index of Inequality** = Gap in life expectancy between the 10% most deprived population and the 10% least deprived

### 3. Historical trend<sup>2</sup>

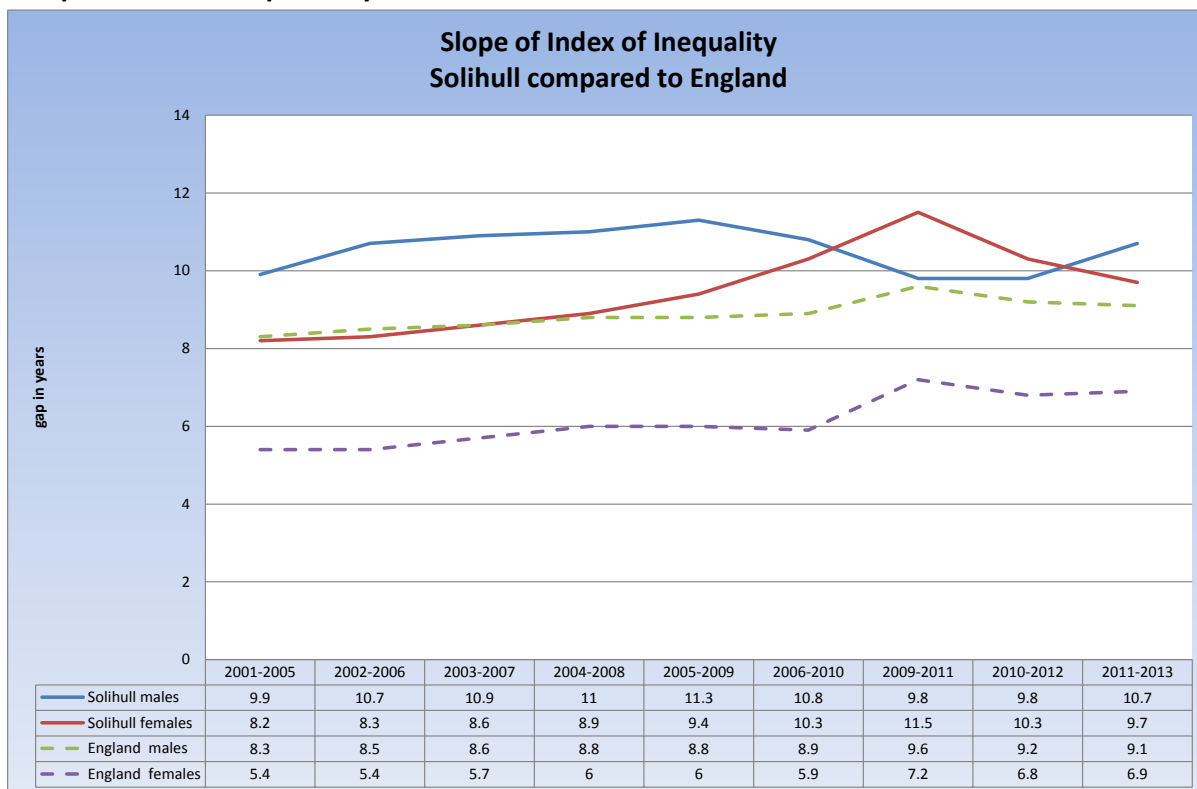


<sup>1</sup> ONS

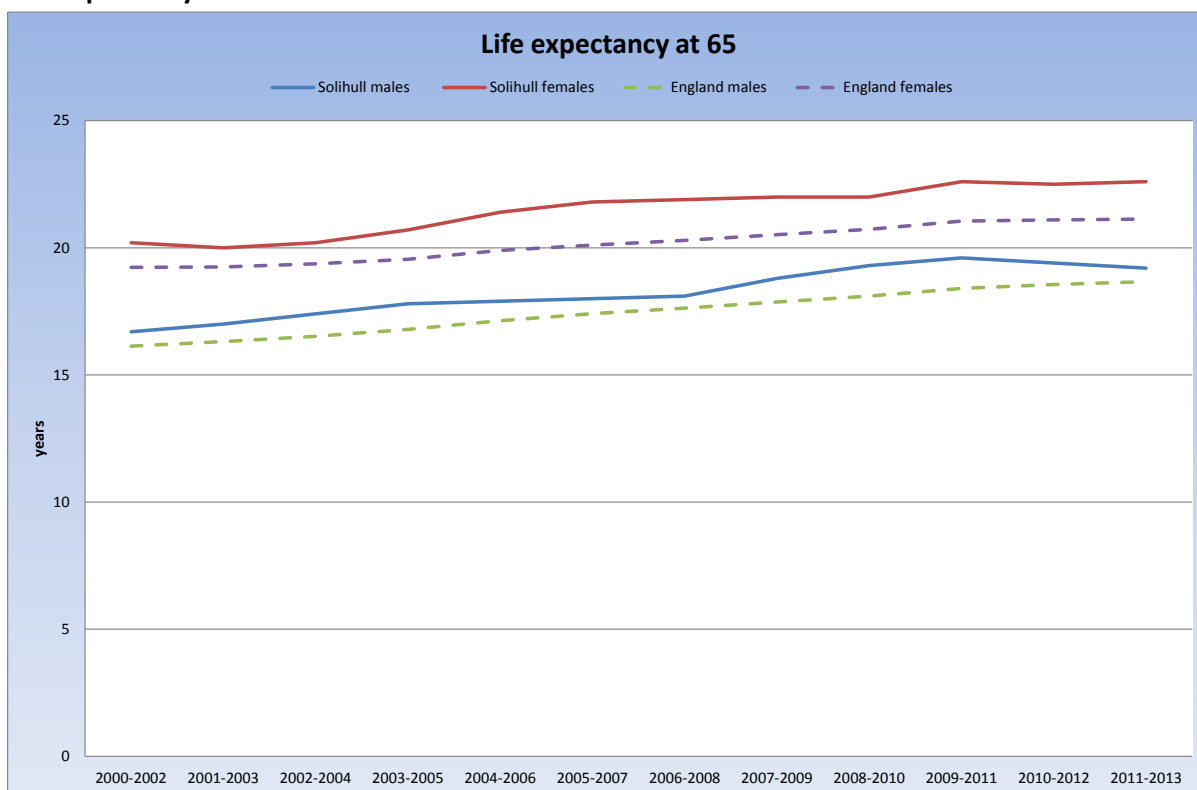
<sup>2</sup> ONS

## Life Expectancy

### Inequalities in life expectancy<sup>3</sup>



### Life expectancy at 65<sup>4</sup>

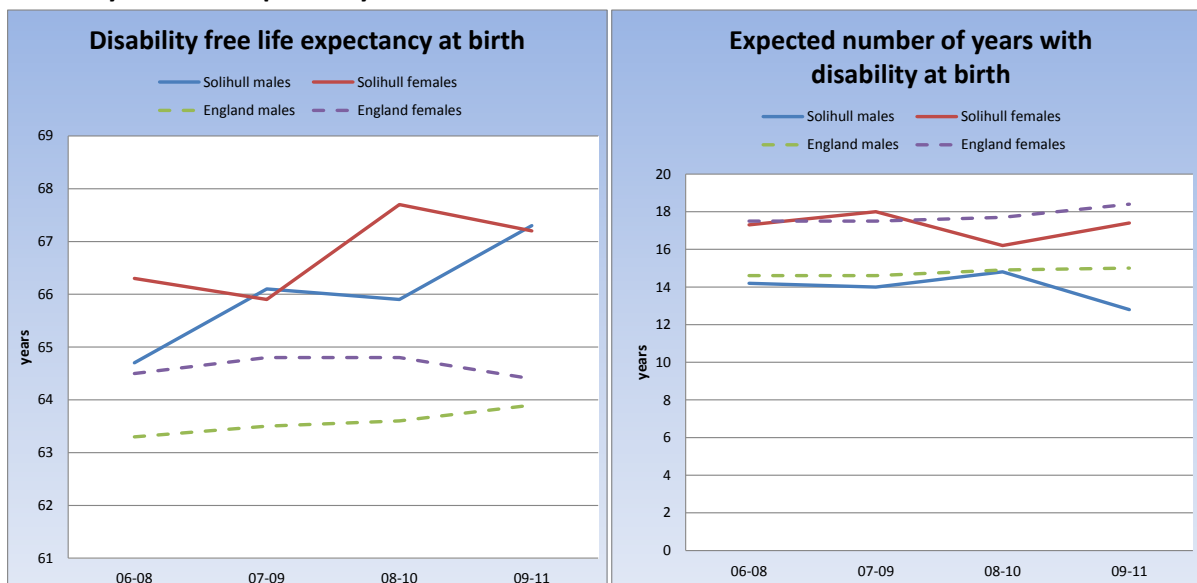


<sup>3</sup> Public health England (PHE)

<sup>4</sup> ONS

Life Expectancy

Disability free life expectancy at birth<sup>5</sup>



4. Statistical peers<sup>6</sup>

	Life expectancy at birth		Healthy life expectancy at birth		Life expectancy at 65	
	Male	Female	Male	Female	Male	Female
Stockport	79.7	83	65.6	65.8	19.2	21.1
Cheshire East	80.4	83.6	68	67.4	19.4	21.4
Cheshire West and Chester	79.2	83.3	64.8	62.9	18.6	21
Trafford	79.9	83.5	65.7	63.2	18.9	21.5
Bath and North East Somerset	80.9	84.5	66	68.5	19.6	21.9
Solihull	80.3	84.8	65.1	65.5	19.2	22.6

5. Local picture: Life expectancy by ward<sup>7</sup>

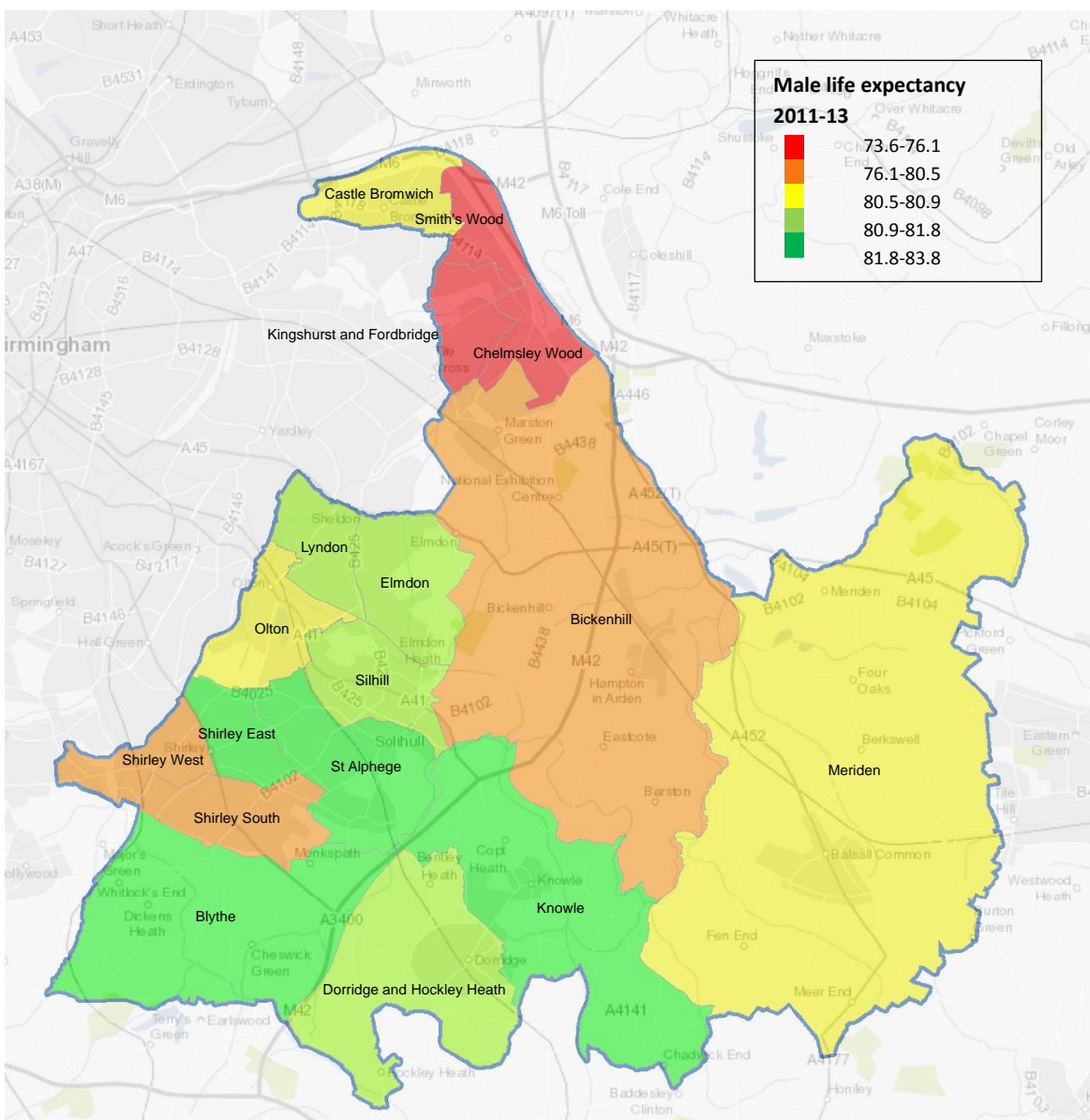
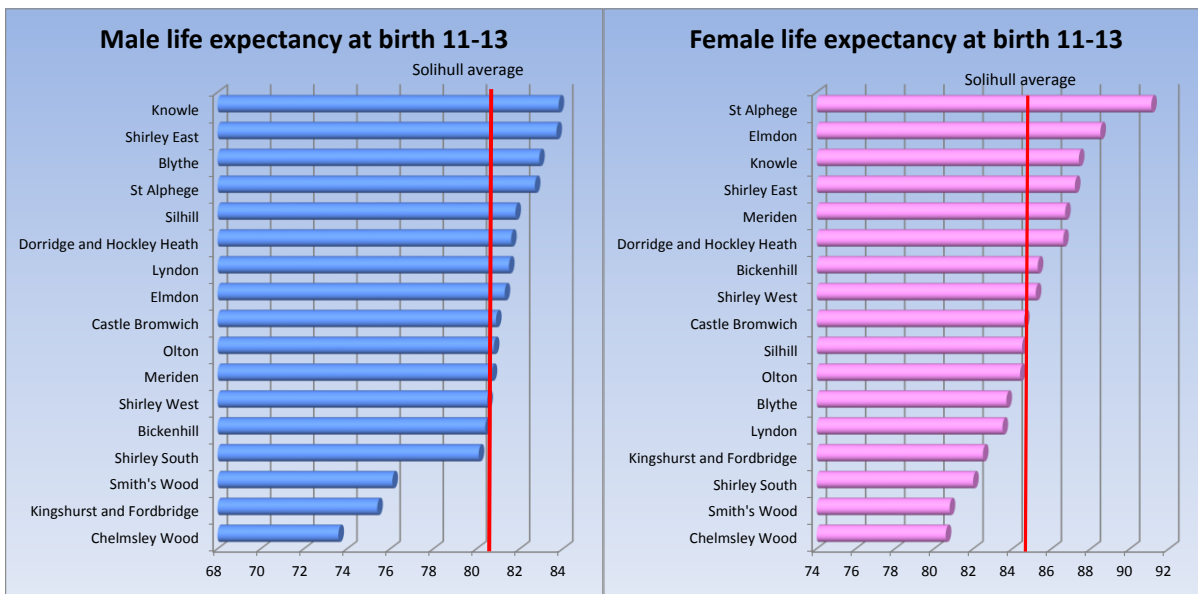
Life Expectancy at birth 2011-13						
Ward	Males	Females	Ward	Males	Females	
Bickenhill	80.4	85.3	Meriden	80.7	86.7	
Blythe	82.9	83.7	Olton	80.8	84.4	
Castle Bromwich	80.9	84.6	St Alphege	82.7	91.1	
Chelmsley Wood	73.6	80.6	Shirley East	83.7	87.2	
Dorridge and Hockley Heath	81.6	86.6	Shirley South	80.1	82	
Elmdon	81.3	88.5	Shirley West	80.5	85.2	
Kingshurst and Fordbridge	75.4	82.5	Silhill	81.8	84.5	
Knowle	83.8	87.4	Smith's Wood	76.1	80.8	
Lyndon	81.5	83.5	Solihull	80.3	84.7	

<sup>5</sup> ONS

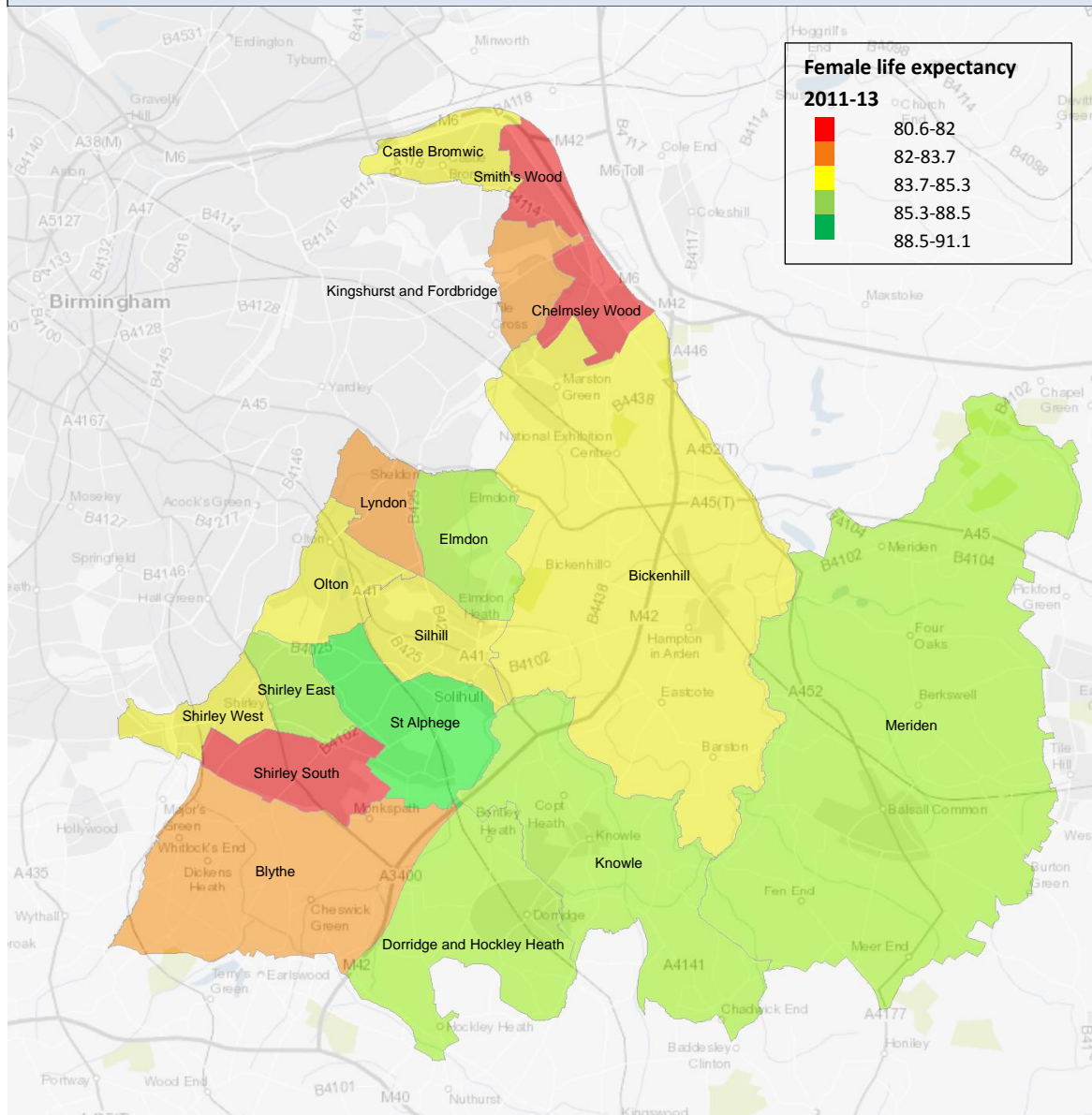
<sup>6</sup> ONS

<sup>7</sup> Local calculation: PCMD and ONS mid year population estimates

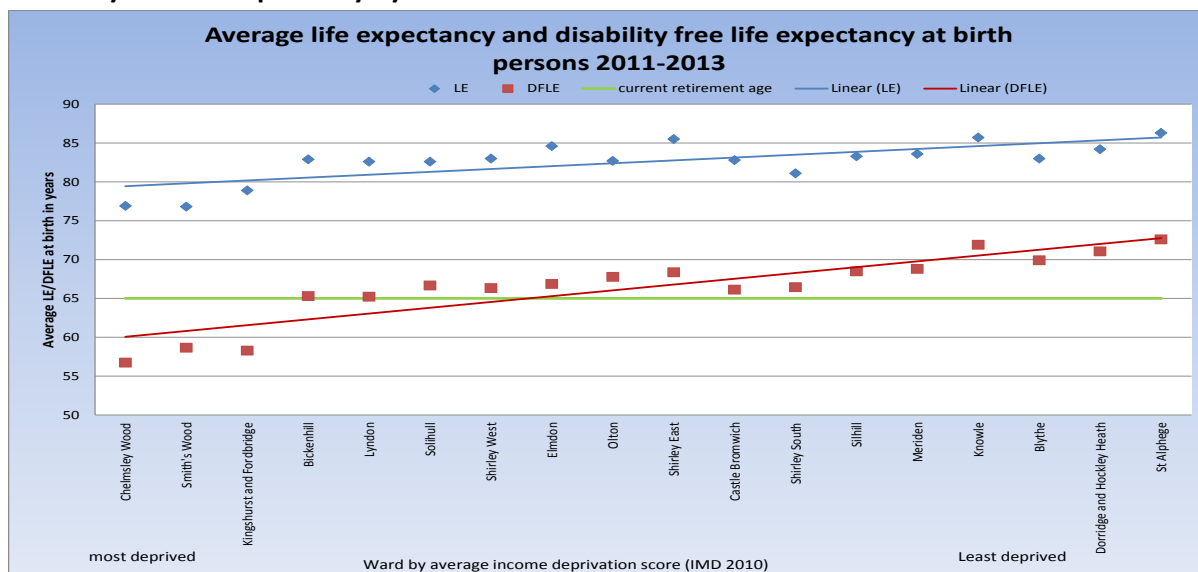
Life Expectancy



# Life Expectancy



Disability free life expectancy by ward<sup>8</sup>



<sup>8</sup> Local calculation: PCMD, ONS mid year population estimates, IMD 2010 and Census 2011