

## Skin cancer

### Headlines

- Incidence of skin cancer (excl. malignant melanoma) is ~ x6 - 8 that for malignant melanoma depending on age group for both England and Solihull
- Mortality from malignant melanoma is between x4 – 10 that for skin cancer (excl. malignant melanoma) depending on age group for England and Solihull
- Incidence from all skin cancers for both males and females increasing over time
- Mortality from all skin cancers increasing for males but low and stable for females
- Solihull rate of potential years of life lost (PYLL) for malignant melanoma is *not significantly different* from England
- Nationally rate of PYLL for malignant melanoma for males significantly *higher* than that for females. Due to small numbers there is *no significant difference* between gender in Solihull
- In Solihull, incidence of malignant melanoma is *significantly higher* than that for England for < 75's, all ages and gender
- When compared across gender, male incidence is *significantly higher* than female for all ages but not < 75's nationally but not locally
- In Solihull, mortality from malignant melanoma is low and *not significantly different* from England <75's, all ages and gender
- When compared across gender, male mortality is significantly higher nationally but not locally
- Rate of potential years of life lost (PYLL) for skin cancer (excl. malignant melanoma) does *not differ* from England
- Nationally rate of PYLL for skin cancer (excl. malignant melanoma) for males significantly *higher* than that for females. Due to small numbers there is *no significant difference* between gender in Solihull
- In Solihull, incidence of skin cancer (excl. malignant melanoma) is *significantly higher* than that for England for < 75's, all ages and gender
- When compared across gender, male incidence *significantly higher* than that for females, nationally and locally
- In Solihull, mortality from skin cancer (excl. malignant melanoma) is low and *not significantly different* from England <75's, all ages and gender
- When compared across gender, male mortality is significantly higher nationally but not locally
- Solihull has *higher* incidence rates when compared to statistical neighbours but has *lower* mortality rates than most of the group
- There is a weak inverse relationship between deprivation and referral for skin cancer

### Definitions

*Malignant melanoma*: cases of cancer that have an ICD10 code of C43

*Skin cancer excluding malignant melanoma*: cases of cancer that have an ICD10 code of C44

*All skin cancer cancer*: cases of cancer that have an ICD10 code of C43 – C44

## Skin cancer

Current picture<sup>1</sup>

Skin cancer excluding malignant melanoma					
Measure	Time period				
<i>Potential years of life lost</i>	2011-13	DSR	Nos		
England		0.28			
Solihull		0.39	22 yrs		
<i>Incidence: all ages DSR</i>	2010-12	males	females	persons	
England		235.7	144.37	182.99	
Solihull		326.43	201.06	254.29 1592	
<i>Incidence: &lt; 75 DSR</i>	2010-12	males	females	persons	
England		124.29	89.68	106.31	
Solihull		186.79	129.1	156.65 866	
<i>Mortality: all ages DSR</i>	2011-13	males	females	persons	
England		1.64	0.64	1.03	
Solihull		1.28	0.44	0.75 5	
<i>Mortality: &lt;75 DSR</i>	2011-13	males	females	persons	
England		0.41	0.14	0.27	
Solihull		0.35	0	0.17 <5	

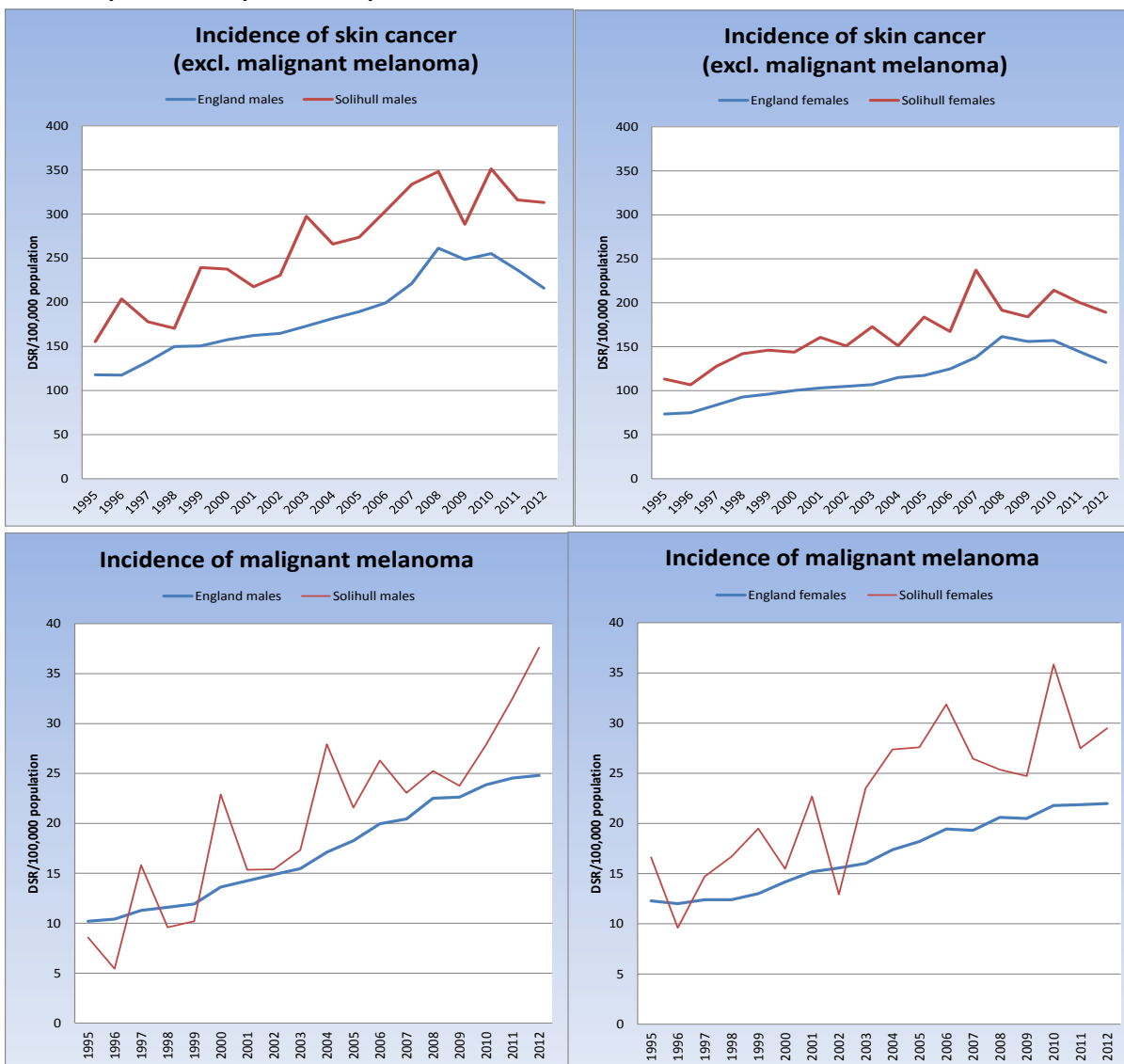
Malignant melanoma					
Measure	Time period				
<i>Potential years of life lost</i>	2011-13	DSR	Nos		
England		3.65			
Solihull		3.72	216yrs		
<i>Incidence: all ages DSR</i>	2010-12	males	females	persons	
England		24.42	21.88	22.78	
Solihull		33.04	31.04	31.42 194	
<i>Incidence: &lt; 75 DSR</i>	2010-12	males	females	persons	
England		18.1	18.83	18.43	
Solihull		25.58	27.76	26.63 147	
<i>Mortality: all ages DSR</i>	2011-13	males	females	persons	
England		5.07	3.01	3.92	
Solihull		5.76	1.69	3.49 22	
<i>Mortality: &lt;75 DSR</i>	2011-13	males	females	persons	
England		3.13	19.8	2.54	
Solihull		3.94	1.85	2.86 16	

<sup>1</sup> Data source: Indicator portal, NHSCIC

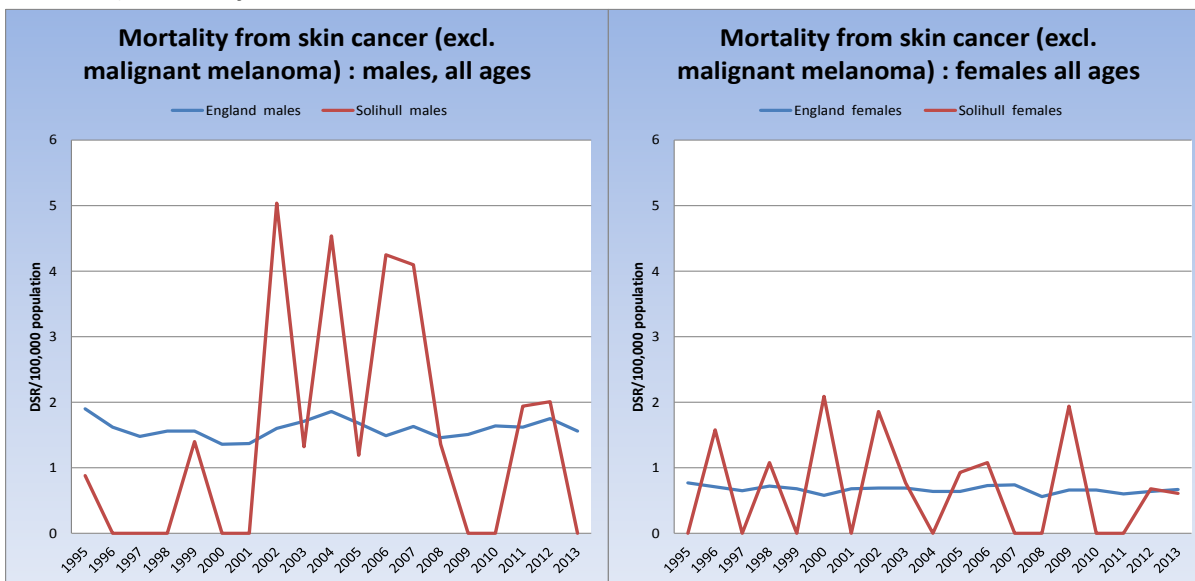
Skin cancer

Historical trend<sup>2</sup>

a) Incidence (New cases)



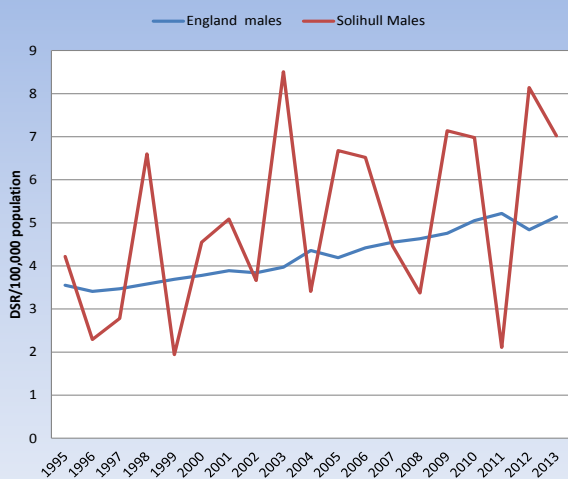
b) Mortality



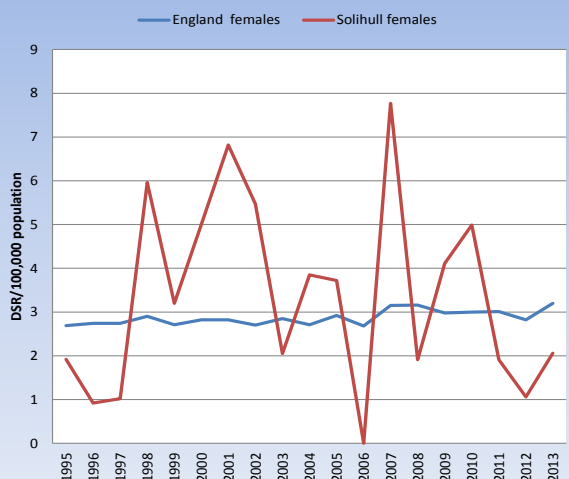
<sup>2</sup> As 1

## Skin cancer

**Mortality from malignant melanoma: males all ages**

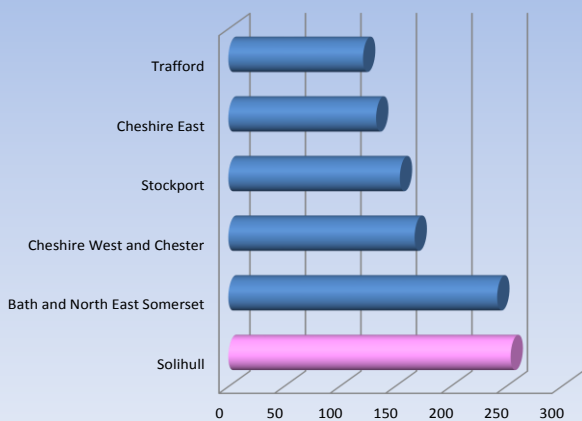


**Mortality from malignant melanoma: females, all ages**

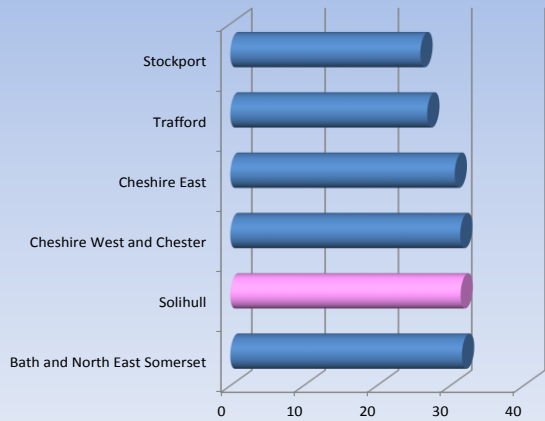


Statistical peers<sup>3</sup>

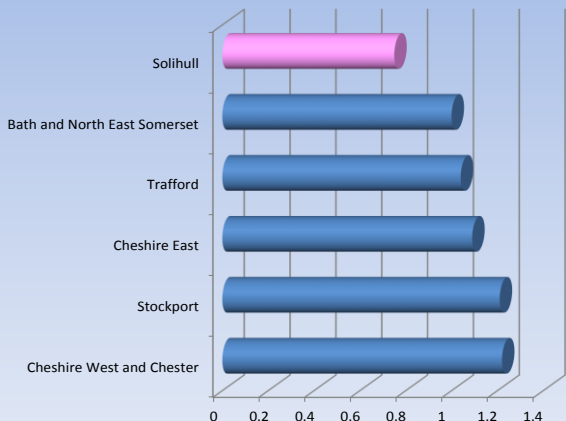
**Skin cancer (excl. malignant melanoma) Incidence 2010-12, all ages, persons DSR/100,000 population**



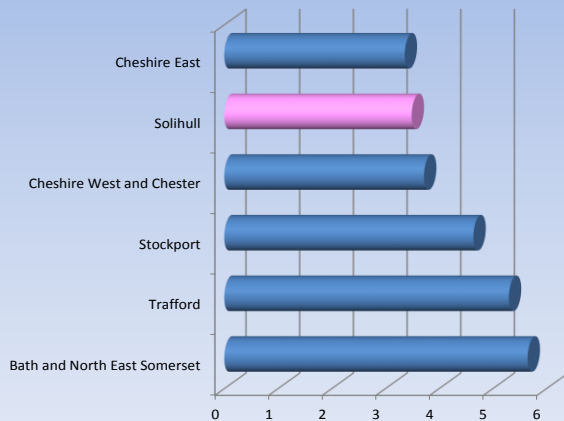
**Malignant melanoma Incidence 2010-12, all ages, persons DSR/100,000 population**



**Skin cancer (excl. malignant melanoma) Mortality, all ages, persons DSR/100,000 population**

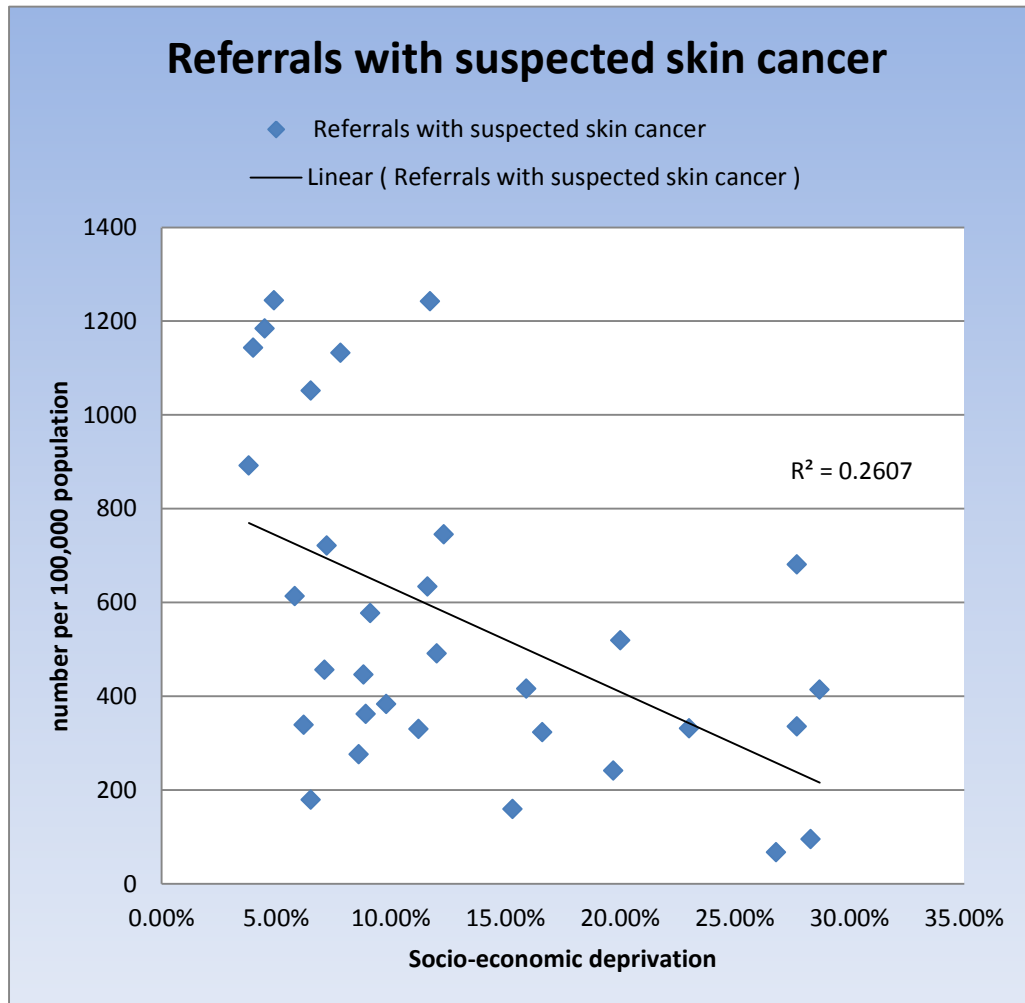


**Malignant melanoma Mortality, all ages, persons DSR/100,000 population**



<sup>3</sup> As 1

## Skin cancer

5. Local picture<sup>4</sup>

Additional information available at :

<http://www.cancerresearchuk.org/cancer-info/cancerstats/types/skin/>

<http://www.swpho.nhs.uk/skincancerhub/>

<sup>4</sup> Data source: Cancer Commissioning toolkit, practice profiles