

Solihull Child Poverty Data

This briefing summarises the latest data on child poverty for Solihull, based on two nationally published data sets:

[Children in Out of Work Benefit Households \(0-18 years\)](#) - Department for Work and Pensions (May snapshot).

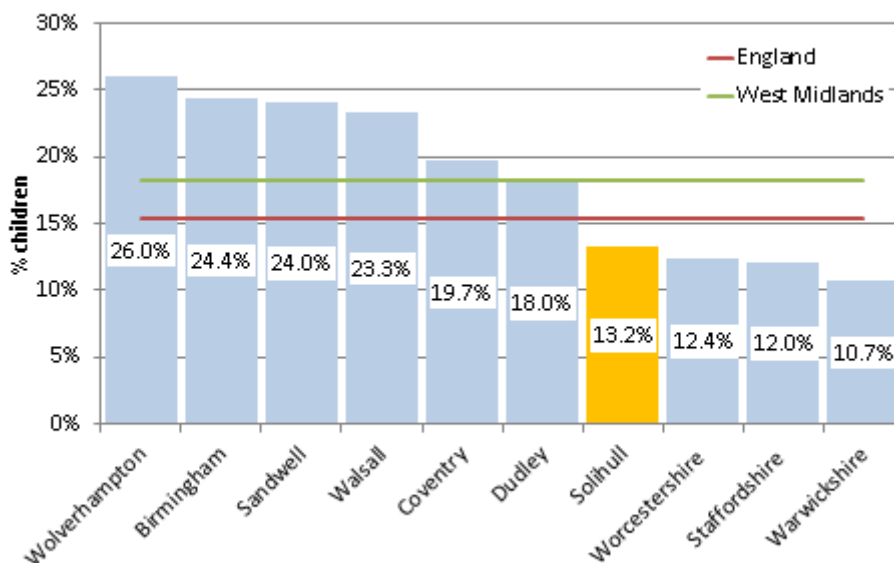
[Children in Low Income Families Local Measure \(0-19 years\)](#) - HM Revenue & Customs (August snapshot)

Children in Out of Work Benefit Households 2014

There were 6,360 Solihull children aged 0-18 years living in an out of work benefit household, equating to 13.2% of all children in the borough. This is below both the England (15.4%) and West Midlands (18.2%) averages and towards the lower end of the spectrum for neighbouring upper tier West Midland Local Authorities.

Solihull has the 159th highest rate (out of 326 English Local Authorities), ranking the borough in the 2nd best quartile nationally.

Children Aged 0-18 Years in Out of Work Benefit Households 2014



Source: DWP

Around 63% of Solihull children in an out of work benefit household live in the North Solihull regeneration area (4,025 children), where the rate is 33% compared to 6% in the rest of the borough.

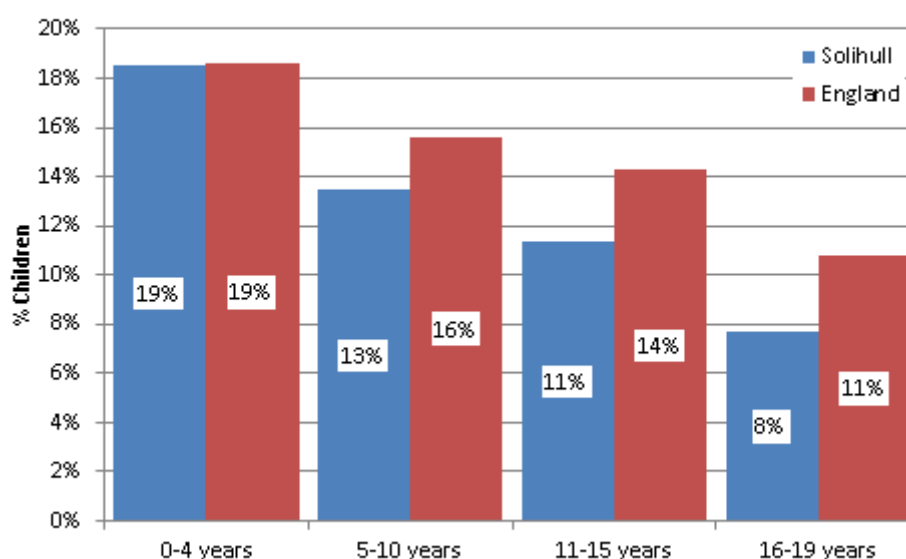
The largest proportion of the children in Solihull live in a family in receipt of Income Support (56%, 3640 children), with Employment & Support Allowance (25%, 1,640 children) and Jobseeker's Allowance (15%, 990 children) the other main contributors. Income Support households represent a larger proportion of the total than nationally, with ESA and JSA households making a smaller contribution to the total.

Children in Out of Work Benefit Households 2014 by Type of Household Benefit				
	Solihull Children	% Children		
		Solihull	England	West Midlands
Income Support	3,640	56%	50%	49%
Jobseeker's Allowance	990	15%	18%	21%
Employment & Support Allowance	1,640	25%	29%	27%
Incapacity Benefits	140	2%	3%	3%
Pension Credits	60	1%	1%	1%
Source: DWP				

Just over two thirds of children living in an out of work benefit household in Solihull in 2014 were aged 0-10 years of age, with children aged 0-4 years the largest single group (36% of total). Children in this youngest age group are by far the most likely to live in an out of work benefit household (19% of all children aged 0-4 years). Solihull has fewer children living in out of work benefit household than the England average in all age groups 5 years and over .

Children in Out of Work Benefit Households in 2014 by Age of Child					
Age of Child	Solihull Children	% All Children in Poverty		Child Poverty Rate	
		Solihull	England	Solihull	England
0-4	2,280	36%	34%	19%	19%
5-10	2,010	32%	32%	13%	16%
11-15	1,440	23%	23%	11%	14%
16-18	630	10%	11%	8%	11%
Source: DWP					

Children in Out of Work Benefit Households in 2014 by Age of Child



Source: DWP

Trends in Children in Out of Work Benefit Households

The number of Solihull children living in an out of work benefit household fell by 13% (-990 children) between May 2010 and May 2014, compared to falls of 17% nationally and 15% across the West Midlands. The proportion of Solihull children in an out of work benefit household fell from 15.3% to 13.2% over this period.

	Solihull Children	% of Children 0-18 Years		
		Solihull	England	West Midlands
2010	7,350	15.3%	19.0%	21.6%
2011	7,160	15.0%	18.4%	20.9%
2012	7,190	15.0%	18.1%	20.5%
2013	6,800	14.2%	17.0%	19.6%
2014	6,360	13.2%	15.4%	18.2%

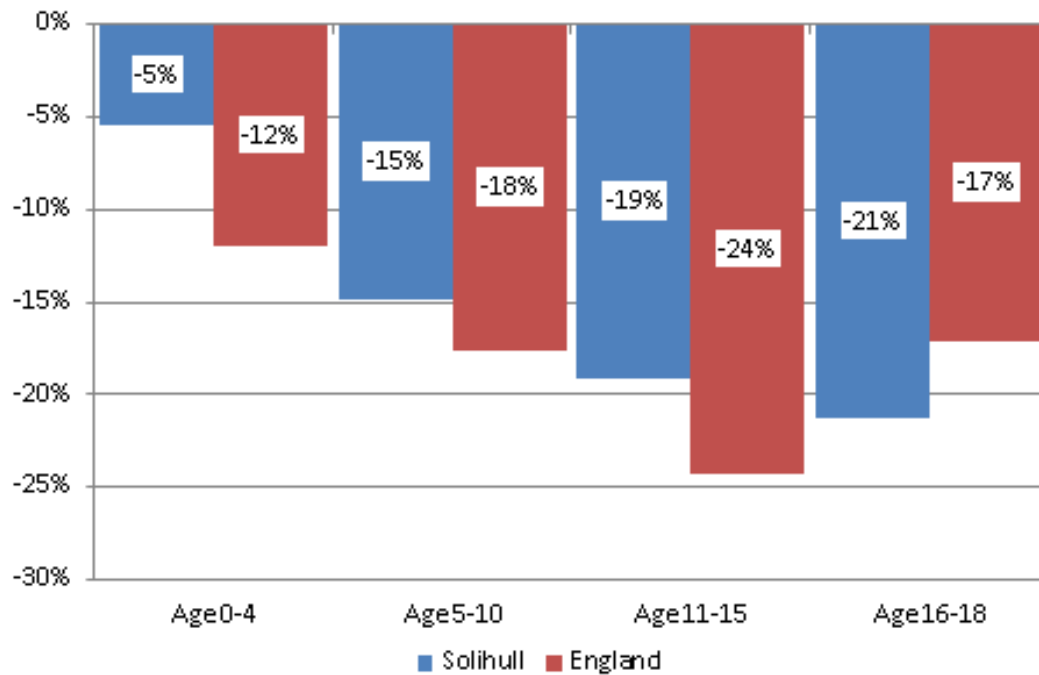
Source: DWP

The fall in children living in an out of work benefit household between 2010 and 2014 has been significantly greater among older children than younger children. This is consistent with the pattern nationally, although it should be noted that the rate of decline among 0-4 year olds in Solihull has been much less than across England as a whole (-5% compared to -12%).

Solihull Children in Out of Work Benefit Households				
	Age 0-4	Age 5-10	Age 11-15	Age 16-18
2010	2,410	2,360	1,780	800
2011	2,450	2,280	1,650	780
2012	2,460	2,290	1,660	780
2013	2,390	2,170	1,530	710
2014	2,280	2,010	1,440	630
Change 2010-2014				
Number	-130	-350	-340	-170
%	-5%	-15%	-19%	-21%

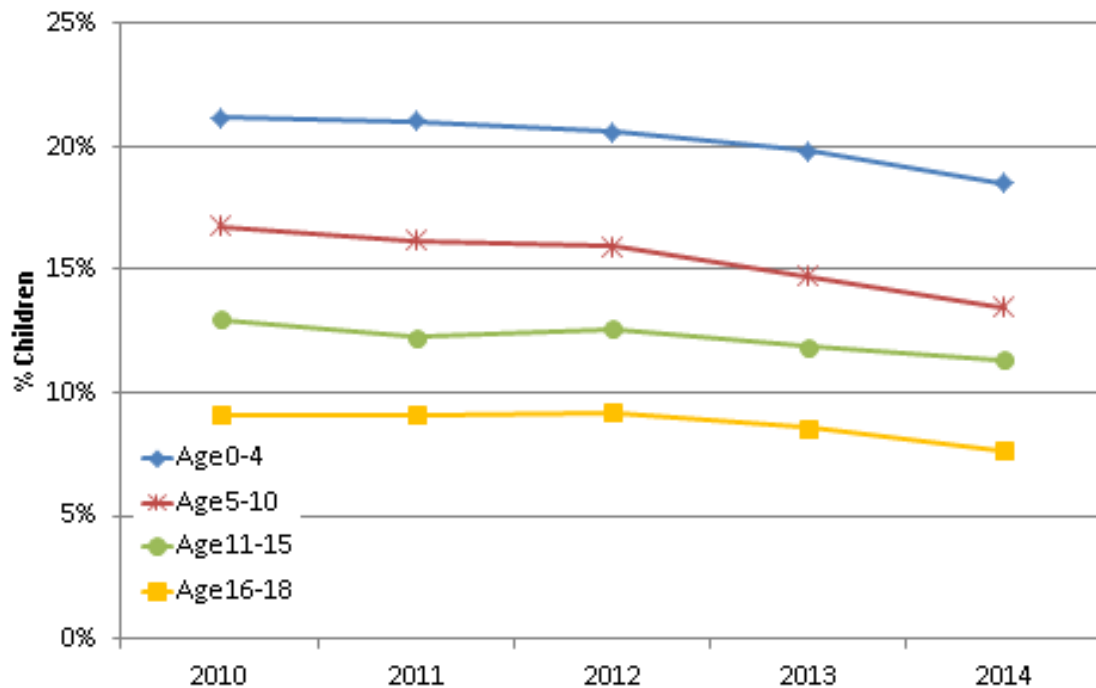
Source: DWP

Change in Number of Children in Out of Work Benefit Households 2010-2014



Source: DWP

Solihull Children in Out of Work Benefit Households Rate by Age



Source: DWP

Children in Low-Income Families Local Measure

The HM Revenue & Customs (HMRC) Children in Low-Income Families Local Measure is a measure of relative poverty and aims to capture the proportion of children falling below the national poverty line. This is defined as the proportion of children living in families in receipt of out-of-work benefits or those in receipt of tax credits where their reported income is less than 60 per cent of UK median income (i.e. the poverty line). Data are a snapshot in time relating to August each year.

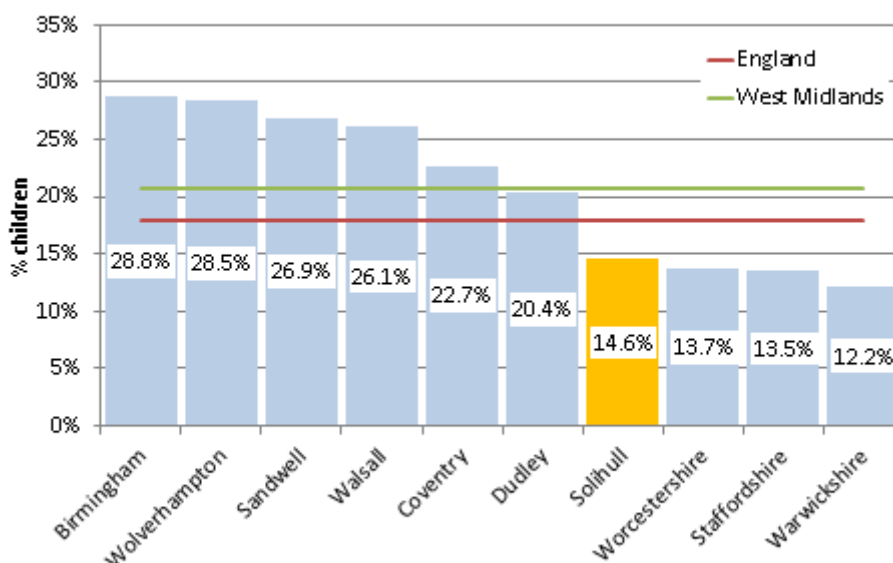
The main strengths of the local indicator are that it is a precise measure of those on particular benefits and tax credits living under the poverty line and the fact that it provides some insight into the types of families in which the children affected live. However, it does have limitations which need to be borne in mind when interpreting the data:

- The measure is not very timely (almost a two year time lag);
- The figures take no account of housing costs and how these vary across the country.
- The reliance on benefits data means the measure fails to capture children in poverty whose families are not in receipt of relevant benefits;
- The relative nature of this measure means its coverage of in-work poverty is heavily influenced by the volatility of incomes nationally, so changes in trend data are open to interpretation.

Child Poverty Rates and Trends

The HMRC data for August 2013 records 6,675 children in Solihull living in poverty, representing 14.6% of all children in the borough. This is below both the England (18%) and West Midlands (20.7%) averages, and towards the lower end of the spectrum for neighbouring West Midlands upper tier Local Authorities.

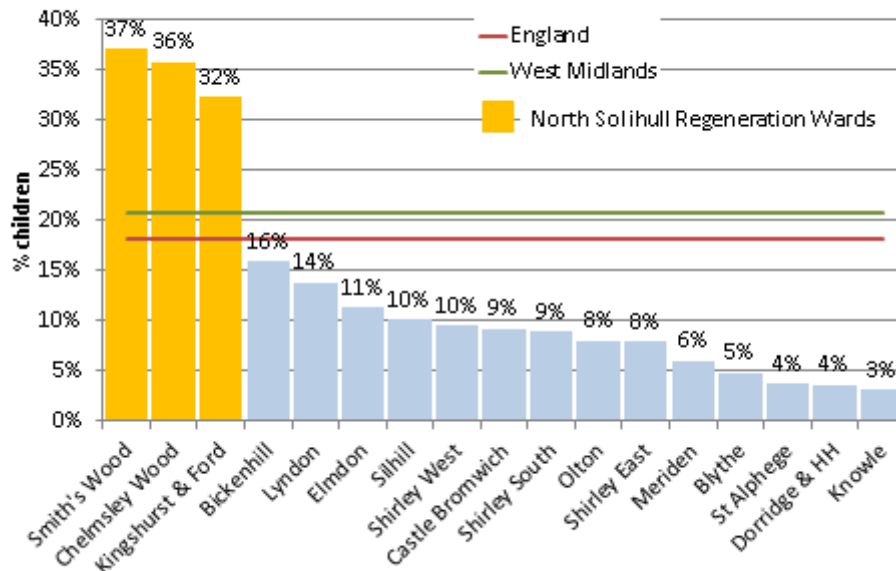
Children in Low Income Families 2013



Source: HMRC

56% of Solihull children living in poverty live in the three North Solihull regeneration wards (3,750 children) where the child poverty rate is 35% compared to 6.4% in the rest of the borough (2,555 children). At a ward level the child poverty rate ranges from 37% in Chelmsley Wood to less than 5% in Dorridge & Hockley Heath, St Alphege and Knowle, with only the three North Solihull regeneration wards having a rate above the England average.

Children in Low Income Families 2013



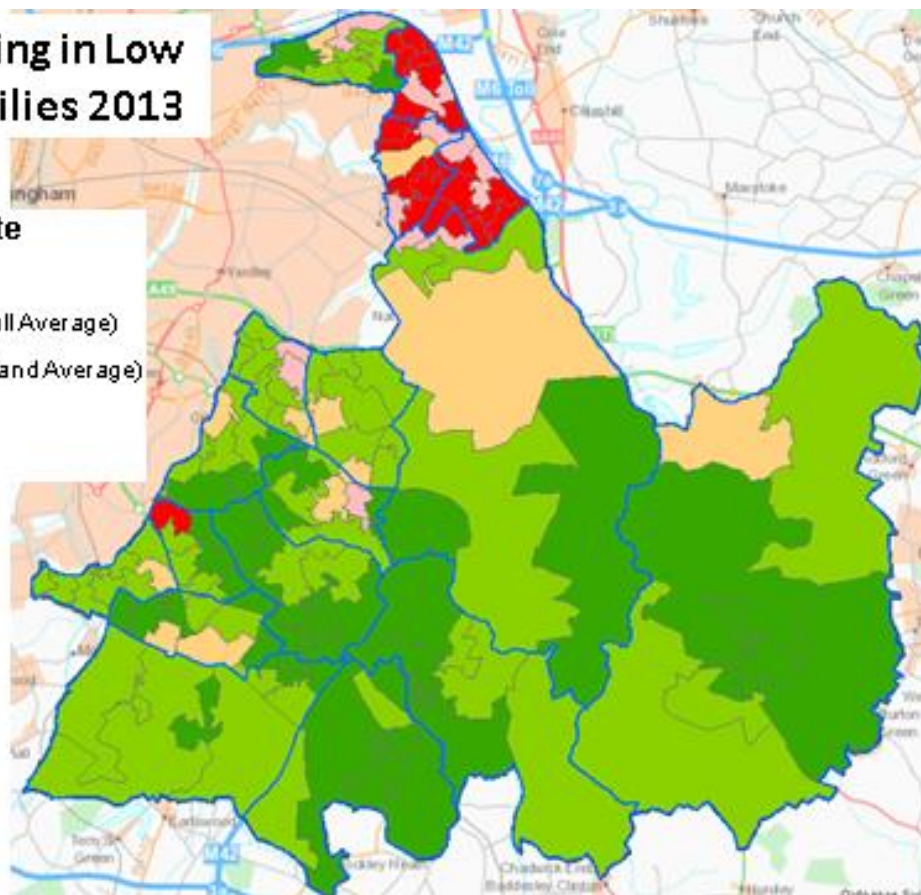
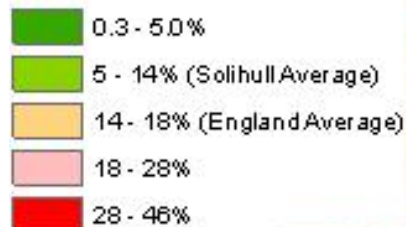
Source: HMRC

The map below shows child poverty rates at a local neighbourhood level (Lower Super Output Area). 32 out of Solihull's 134 LSOAs neighbourhood had a child poverty rate above the England average of 18% in 2013. Just five of these were located outside of the North Solihull regeneration area (Green Hill in Shirley East, Parkfields in Castle Bromwich, Hobs Moat North and Coventry Road East in Lyndon and Damsonwood South in Silhill).

Five LSOAs in North Solihull have a child poverty rate of more than 40% (The Birds South & North both in Smith's Wood, Windy Arbor and Chelmsley Wood Town Centre both in Chelmsley Wood and Babbs Mill North in Kingshurst & Fordbridge).

Children Living in Low Income Families 2013

Child Poverty Rate



Source: HMRC

Trends in Child Poverty Rates

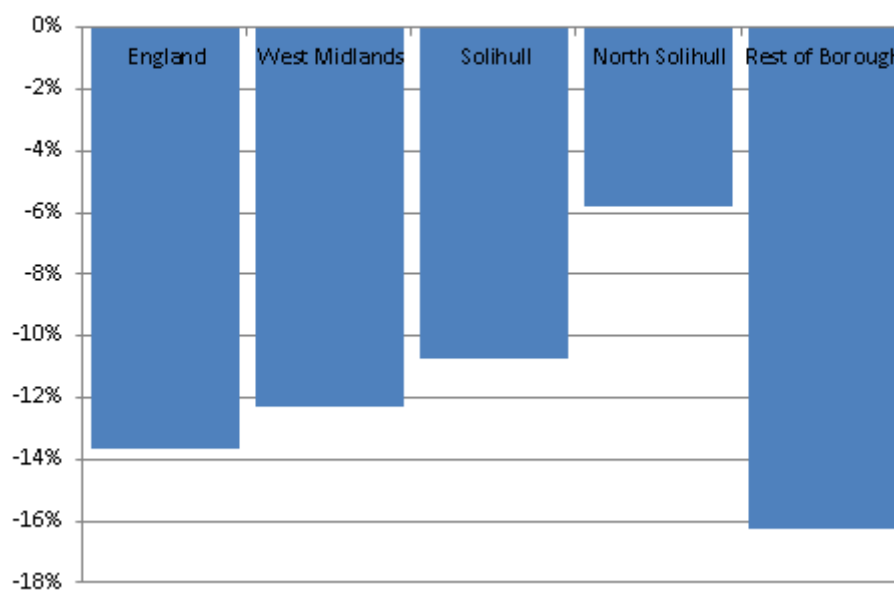
Following a sharp increase at the outset of the Recession in 2008/09, the number of Solihull children in poverty fell in each of the four years 2009 to 2013. As a result the number of Solihull children in poverty in 2013 was 11% (-800) lower than in 2009. This is a slightly smaller reduction than across England as a whole (-14%). The Solihull child poverty rate fell from 16.2% to 14.6% over this period.

	Solihull Children	% of Children		
		Solihull	England	West Midlands
2006	6,790	14.7%	20.8%	22.9%
2007	7,065	15.2%	21.6%	24.0%
2008	7,015	15.2%	20.9%	23.3%
2009	7,475	16.2%	21.3%	24.0%
2010	7,295	15.8%	20.6%	23.3%
2011	7,245	15.8%	20.1%	22.7%
2012	6,870	15.0%	18.6%	21.1%
2013	6,675	14.6%	18.0%	20.7%

Source: HMRC

Between 2009 and 2013 the number of children in poverty fell by -6% (-230 children) in the three North Solihull Regeneration wards and by -16% (-570 children) in the rest of the borough.

Change in Number of Children in Poverty 2009-2013



Source: HMRC

Child poverty by benefit type/work status

The child poverty data provide some proxy information on the likely employment status of the families in poverty – though the figures are limited because the data relate to benefits received as opposed to work status.

These show that, of all children in poverty in Solihull in 2013, the majority (83%, 5,520) were known to be in families who were receiving out-of-work benefits, while 3% (215 children) were known to be in families with someone in work (as indicated by the fact they were in receipt of Working Tax Credit). The remaining 14% of children live in families that are known to be in receipt of Child Tax Credit. However, while it is known that this group are on incomes below the 60 per cent median income, the work status of the family is unknown – so this group could potentially include in-work and out-of-work families.

The distribution in Solihull is broadly in-line with the national and regional averages.

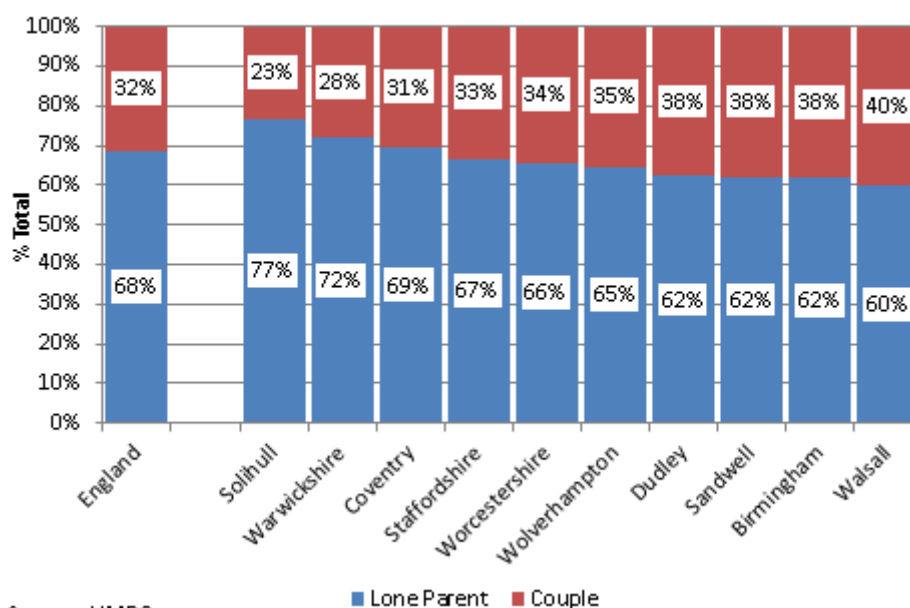
	Solihull Children	% of Children in Poverty 2013		
		Solihull	England	West Midlands
Workless family	5,520	83%	81%	82%
In Work Family	215	3%	5%	4%
Family work status Unknown	940	14%	15%	14%
Total	6,675			

Source: HMRC

Child Poverty by Family Type and Age of Child

77% of Solihull children living in poverty in 2013 were in a lone parent family (5,115 children) and 23% (1,560 children) were living in a two parent household. A far higher proportion of children living in poverty in Solihull were in a lone parent household than the either the England (68%) or West Midlands (64%) averages.

Children in Poverty in 2013 by Family Structure

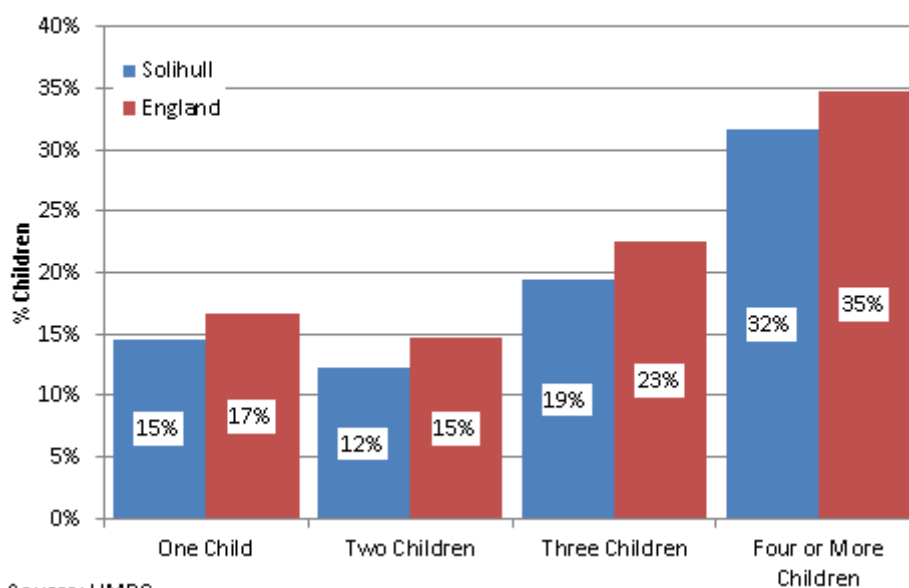


Children in larger families tend to face a much higher risk of poverty. For instance in Solihull in 2013 the child poverty rate among children in one child households was 15%, rising to 32% among those where the family has four or more children. This pattern is consistent with England as a whole and the rate in Solihull is lower for all sizes of family than the average.

Child Poverty in 2013 by Size of Family					
Size of Family	Solihull Children	% All Children in Poverty		Child Poverty Rate	
		Solihull	England	Solihull	England
1 Child	1,645	25%	24%	15%	17%
2 Children	2,325	35%	33%	12%	15%
3 Children	1,585	24%	23%	19%	23%
4+ Children	1,115	17%	20%	32%	35%

Source: HMRC

Child Poverty Rates in 2013 by Size of Family

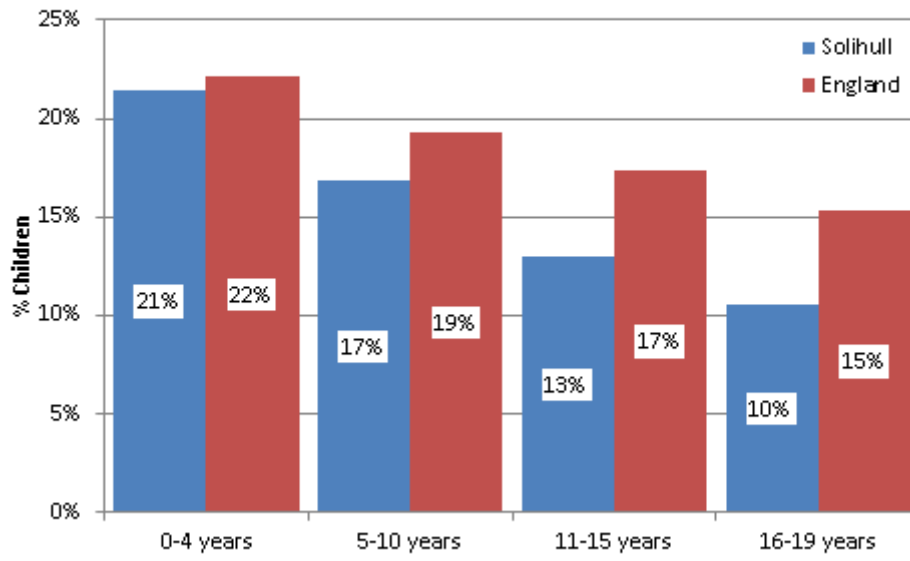


The table and chart below show the 2013 Child Poverty statistics by age of child, highlighting the fact that rates are much higher among younger children. For instance in Solihull, 21% of 0-4 were recorded as living in poverty in 2013, compared to 13% of 11-15 year olds and 10% of 16-19 year olds.

Child Poverty in 2013 by Age of Child					
Age of Child	Solihull Children	% All Children in Poverty		Child Poverty Rate	
		Solihull	England	Solihull	England
0-4	2,315	35%	33%	21%	22%
5-10	2,185	33%	32%	17%	19%
11-15	1,460	22%	23%	13%	17%
16-19	715	11%	12%	10%	15%

Source: HMRC

Child Poverty Rates in 2013 by Age of Child



Source: HMRC