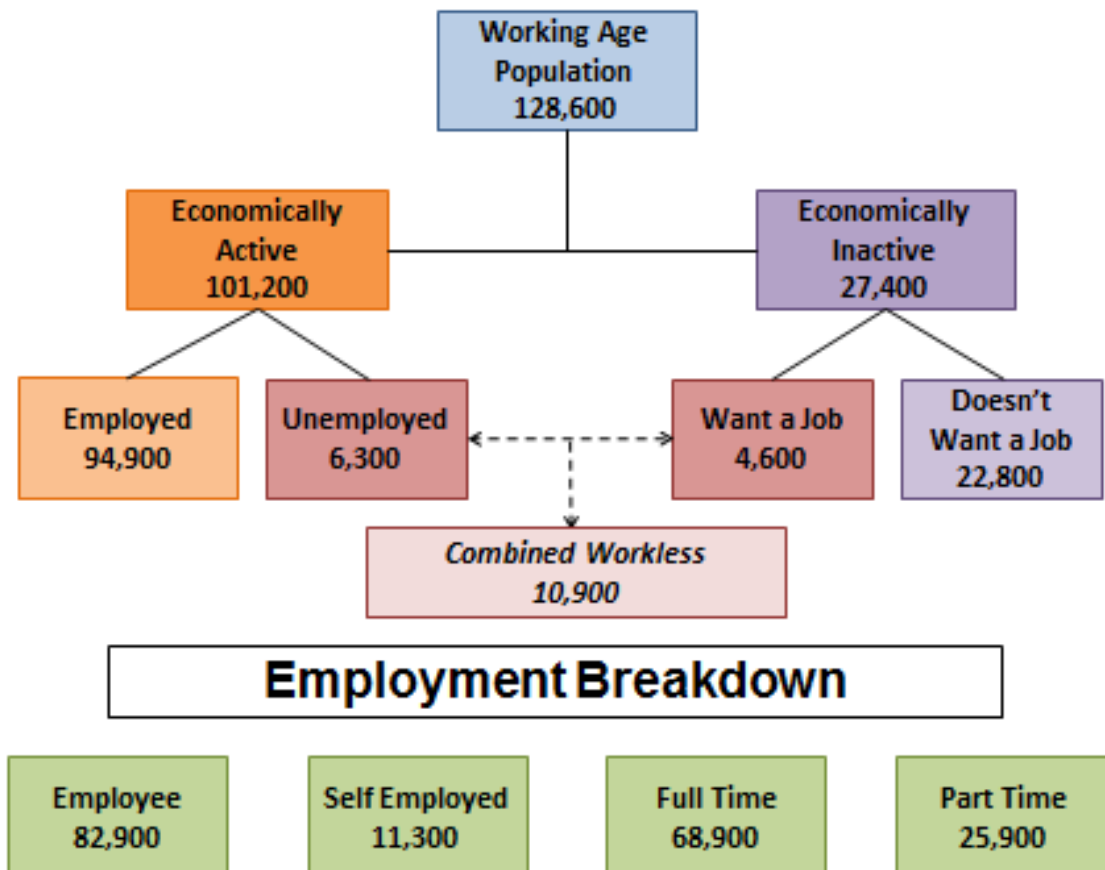


Solihull Resident Employment and Skills

Resident Employment Profile

The figure and table below show the employment status of working age Solihull residents taken from the sample based December 2016 Annual Population Survey (APS). Figures from the APS are therefore subject to a margin of error and available at borough level only. For unsampled and ward level data refer to the analysis in the Observatory [Census webpages](#).



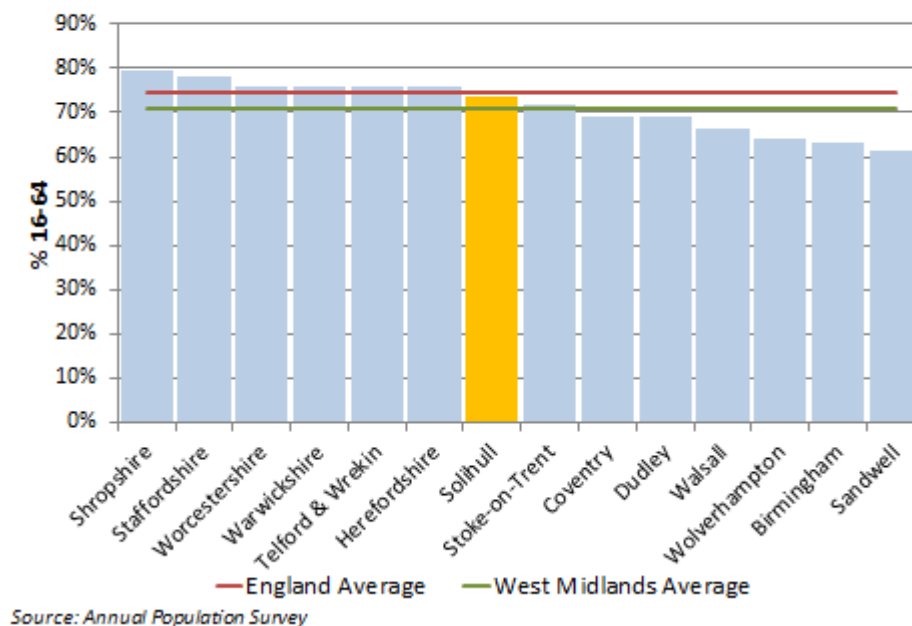
Working Age Employment Status – December 2016				
	Solihull Count	% 16-64 Population		
		Solihull	England	West Midlands
Employed	94,900	73.8%	74.3%	71.1%
Unemployed	6,300	4.9%	3.9%	4.3%
Economically Inactive	27,400	21.3%	21.9%	24.6%

Source: Annual Population Survey - December 2016

Solihull Employment

As at December 2016 there were 94,900 working age Solihull residents in employment, equating to an employment rate of 73.8%. This is the England average (74.1%), but above that for the West Midlands region (71.1%), where Local Authority rates range from less than 65% in Wolverhampton, Birmingham and Sandwell to over 76% in Worcestershire, Staffordshire and Shropshire.

West Midlands Employment Rates – December 2016



Compared with England and the West Midlands a relatively high proportion of Solihull adults in employment are employed in high level occupations (Managers, directors & senior officials and Professional Occupations) and relatively few are employed in elementary occupations.

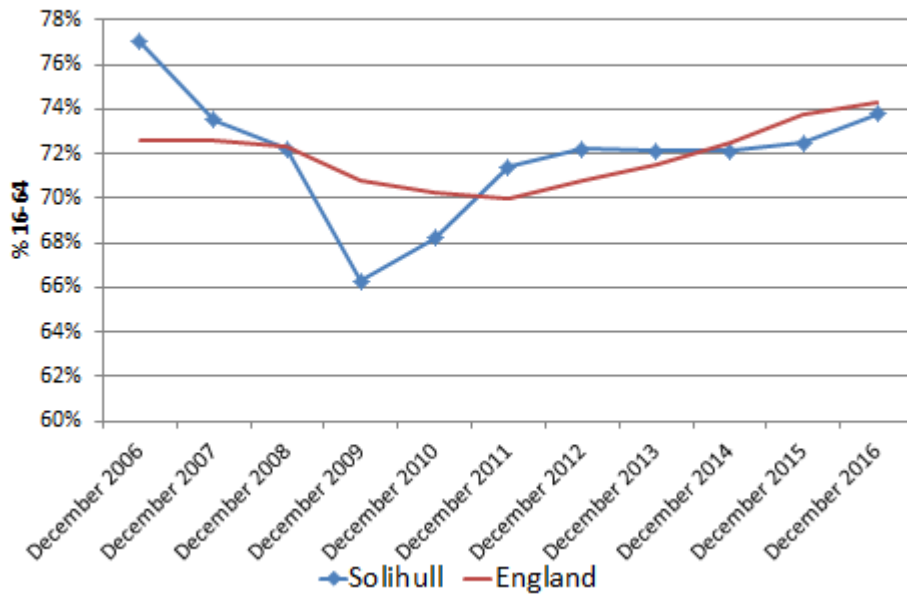
These figures along with the employment breakdown by industry sector are provided in the appendices.

Employment Change

Following a sharp fall between September 2007 and September 2010 the Solihull employment rate has increased slightly over the last six years. In December 2016 there were 3,100 more working residents in employment than the previous year and 8,900 more than in December 2010. As a result the employment rate increased from 68.2% to 73.8% over this six year period.

This is similar, albeit more pronounced to the national trend over this period.

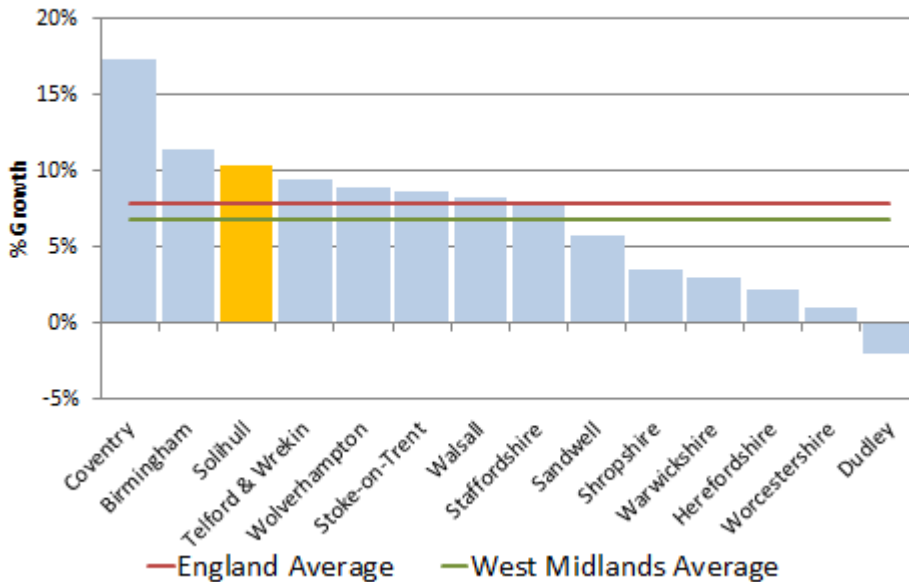
Working Age Employment Rates



Source: Annual Population Survey

Solihull recorded the 3rd highest rate of employment growth in the West Midlands between December 2010 and 2016.

Employment Growth in West Midlands December 2010-2016



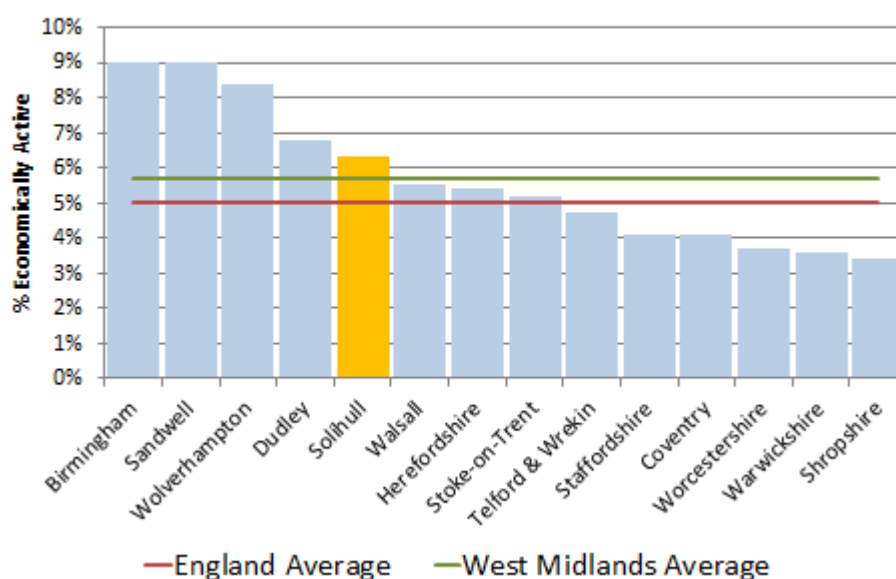
Source: Annual Population Survey

Unemployment

The Annual Population Survey uses the International Labour Organisation (ILO) definition for unemployment¹ as opposed to measures based solely on eligibility for benefits (e.g. Claimant Unemployment, Worklessness).

In December 2016 there were 6,300 working age Solihull residents classified as being unemployed, equating to an unemployment rate² of 6.3%. This is above both the England (5.0%) and West Midlands (5.7%) averages where the rate ranges from 9% in Birmingham and Sandwell to less than 4% in Worcestershire, Warwickshire and Shropshire.

ILO Unemployment Rates in West Midlands December 2016



Source: Annual Population Survey

The [Solihull Unemployment Briefing](#) provides monthly analysis of Claimant Unemployment down to a ward level and quarterly as well as quarterly analysis of Department for Work & Pensions worklessness data.

Economically Inactive

People are classified as being economically inactive if they are not in work and do not meet the internationally agreed definition of unemployment. They are people without a job who have not actively sought work in the last four weeks and/or are not available to start work in the next two weeks.

In December 2016 there were 27,400 16-64 year olds in Solihull economically inactive, equating to 21.3% of the working age population, in-line with the England average, but below that for the West Midlands (24.6%).

¹ people without a job who are able to start work in the next two weeks and who had either looked for work in the previous four weeks or are waiting to start a job they have already obtained

² The unemployment Rate is the number unemployed as proportion of economically active population

A large majority of economically inactive adults in Solihull do not want a job (22,800, 83%) and have effectively opted out of the labour market. This is reflected in the breakdown of economic inactivity by reason, with the largest categories being students and those looking after the family/home.

	Economic Inactivity by Reason – December 2016		
	Solihull Count	% Inactive	
		Solihull	England
Student	6,500	23.7%	26.5%
Looking after family/home	6,800	24.8%	25.6%
Long-term sick	5,600	20.6%	21.5%
Retired	4,300	15.6%	13.1%
Other	3,000	10.8%	11.1%
Temporary sick	1,000	3.6%	1.9%
Discouraged	200	0.9%	0.4%
Source: Annual Population Survey			

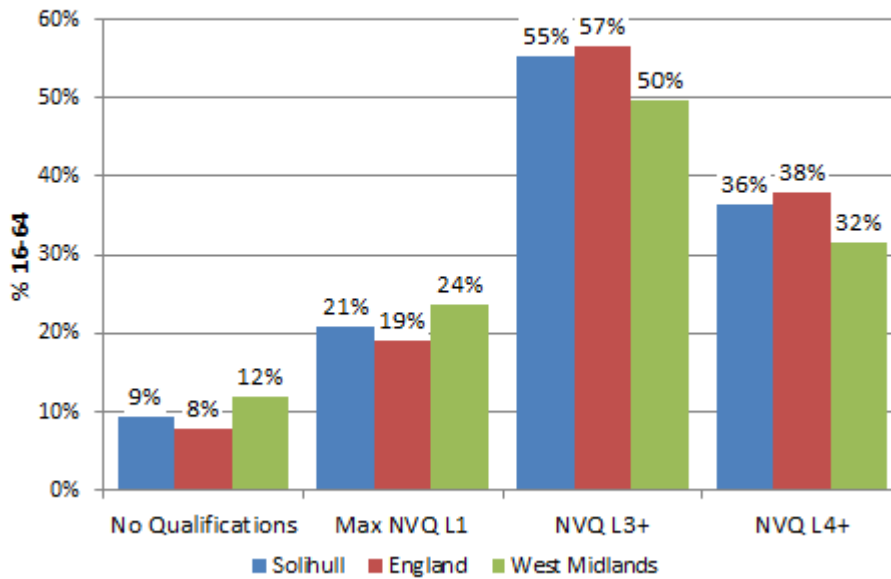
Resident Skills Profile

The table below shows skills among the working age population, as measured by the highest level of National Vocational Qualification (NVQ) achieved. As at December 2016 46,800 working age Solihull residents had the equivalent of a degree or higher (NVQ level 4+), 14,900 had the equivalent of a GCSE qualification (NVQ level 1) and 11,800 had no formal qualifications.

	Highest Level of Qualification - December 2016			
	Solihull Count	% 16-64 year olds		
		Solihull	England	West Midlands
NVQ4+	46,800	36.4%	37.9%	31.5%
NVQ3	22,300	17.4%	17.4%	16.9%
NVQ2	20,500	16.0%	16.0%	17.2%
NVQ1	14,900	11.6%	11.3%	11.7%
No qualifications	11,800	9.2%	7.8%	11.8%
Trade Apprenticeships	3,700	2.9%	3.0%	2.7%
Other qualifications	8,400	6.6%	6.7%	8.2%
Source: Annual Population Survey				

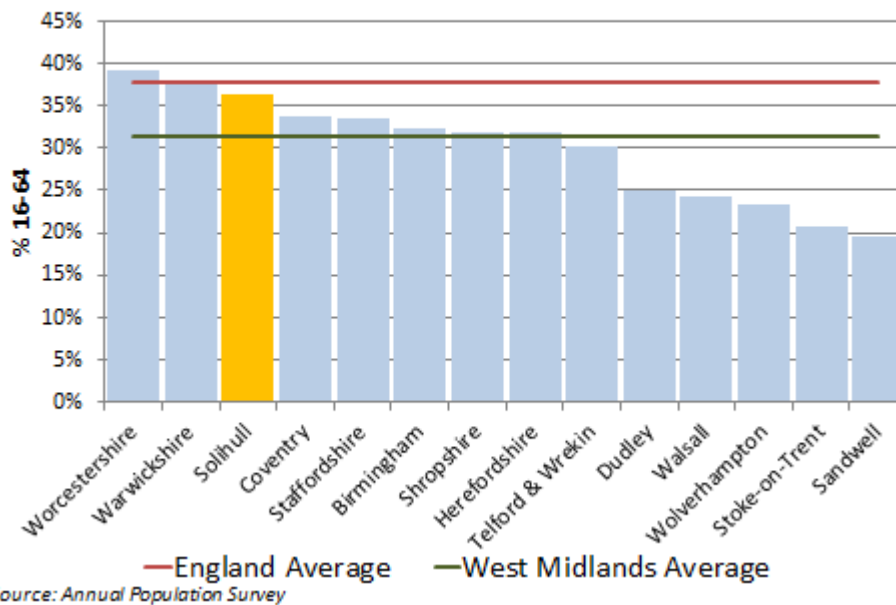
At 36.4%, a slightly lower proportion of Solihull residents have higher level qualifications than the England average (37.9%), but more than the West Midlands (31.5%). This differential also applies in relation to all those qualified to NVQ level 3 and above. At the other end of the spectrum an above average proportion of Solihull residents have no formal qualifications (9.2% compared to England average of 7.8%).

Working Age Skills: Highest Level of Qualification – December 2016



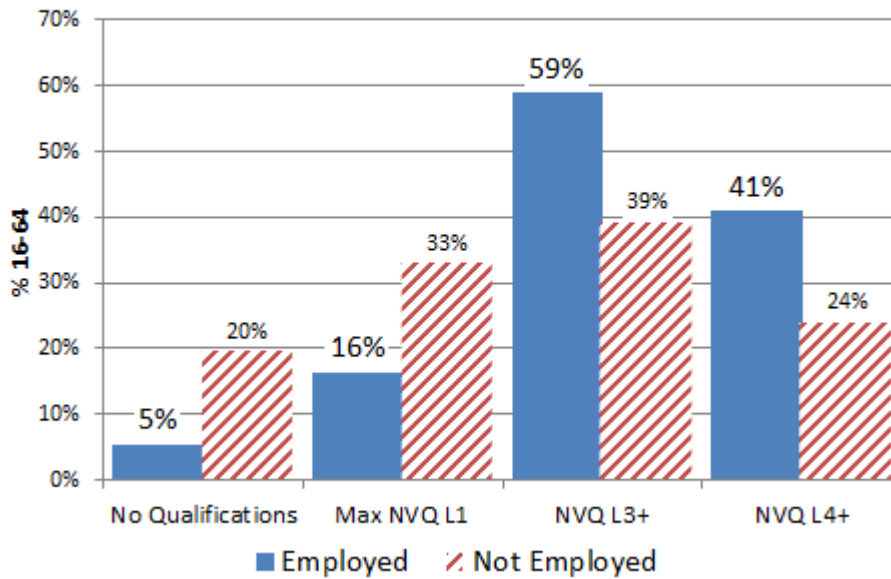
In terms of individuals qualified to NVQ level 4 and above Solihull has the 3rd highest proportion in the West Midlands.

Working Age Population with NVQ Level 4+ Qualifications in West Midlands December 2016



Within Solihull adults in employment are much more likely to have higher qualifications (and less likely to have lower level qualifications) than those not in employment. For instance, 41% of those in employment have NVQ level 4 and above skills compared to 24% of those either unemployed or economically inactive.

Solihull Skills: Highest Level of Qualification by Employment Status December 2016

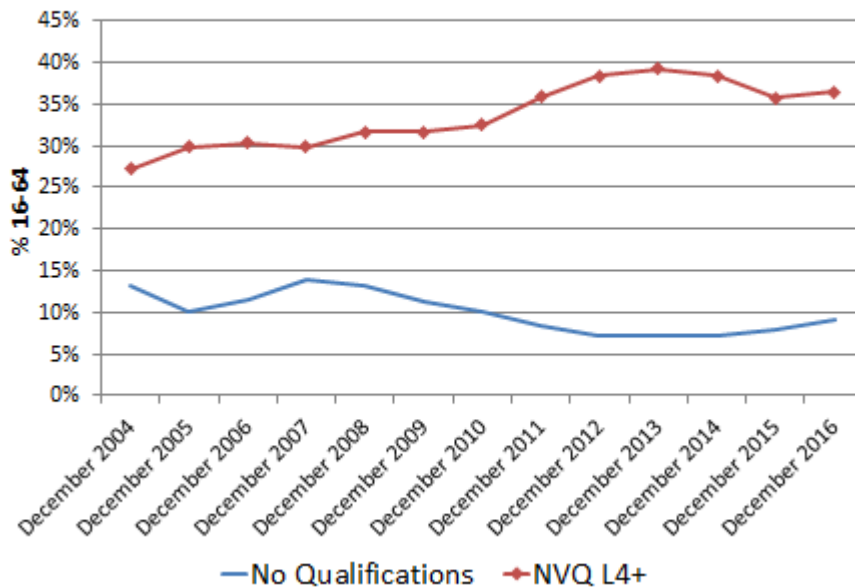


Source: Annual Population Survey

The number and proportion of Solihull adults with NVQ level 4 and above qualifications have increased substantially of the last few years, allied to a decline in those with no qualifications.

For instance, the proportion of Solihull adults with NVQ level 4 and above qualifications increased from 30% in December 2007 to over 36% in December 2016, with the proportion with no qualifications falling from 14% to 9% over this period.

Highest Level of Qualification Among Solihull Working Age Adults



Source: Annual Population Survey

Highest Level of Qualification - Solihull Working Age Adults						
	Number		% 16-64 Population		Change 2007-2014	
	2007	2016	2007	2016	Count	%
NVQ Level 4+	36,400	46,800	29.9%	36.4%	10,400	29%
% with NVQ L3+	58,300	69,100	47.9%	53.8%	10,800	19%
Max NVQ L1	34,800	26,700	28.6%	20.8%	-8,100	-23%
No Qualifications	16,900	11,800	13.9%	9.2%	-5,100	-30%
Source: Annual Population Survey						

Appendix 1: Employment Breakdown December 2016

Occupation Group	Solihull Count	% All in Employment		
		Solihull	England	West Midlands
Managers, directors & senior officials	12,300	12.4%	10.9%	9.7%
Professional occupations	23,600	23.9%	20.4%	17.6%
Associate prof & tech occupations	11,200	11.3%	14.6%	13.0%
Administrative & secretarial occupations	11,600	11.7%	10.2%	10.6%
Skilled trades occupations	9,100	9.2%	10.2%	11.1%
Caring, leisure & other service occupations	8,900	9.0%	9.0%	9.0%
Sales & customer service occupations	7,700	7.8%	7.4%	7.5%
Process, plant & machine operatives	3,900	3.9%	6.4%	8.1%
Elementary occupations	10,700	10.8%	10.6%	13.1%
Source: Annual Population Survey				

Industry Sector	Solihull Count	% 16-64 in Employment		
		Solihull	England	West Midlands
Agriculture and fishing	!	0.5%	0.9%	1.1%
Energy and water	2,000	2.1%	1.5%	1.5%
Manufacturing	10,400	10.5%	9.3%	12.6%
Construction	6,800	6.9%	7.0%	6.6%
Distribution, hotels and restaurants	17,000	17.2%	18.4%	19.1%
Transport and communications	10,400	10.5%	9.4%	9.0%
Banking, finance and insurance	18,000	18.2%	17.6%	15.0%
Public admin. education and health	27,900	28.2%	29.5%	29.5%
Other services	4,800	4.9%	5.9%	5.0%
! Estimate not available as sample size is zero or disclosive				
Source: Annual Population Survey				