

### Overall Unemployment

Universal Credit + JSA claimants

ENGLAND



SOLIHULL

### Youth Unemployment

Universal Credit + JSA claimants

ENGLAND



SOLIHULL

\*Numbers are rounded to the nearest 5 and the previous month's figures are retrospectively revised.

### Headlines

- Following four consecutive monthly increases, the overall claimant unemployment count in Solihull fell in both November (-45 claimants) and December 2016 (-10 claimants).
- The claimant rate for young people age 18-24 years also reduced by a further 20 individuals in December.

This briefing introduces a new headline measure for claimant unemployment in Solihull, which is more representative of the true level of benefit related unemployment than Job Seekers Allowance (JSA). Since June 2015 there has been a phased introduction of Universal Credit (UC) in Solihull which has replaced a number of existing benefits, including JSA for new claimants. These new claimants would probably be receiving JSA in the absence of UC; therefore focusing only on JSA figures does not give a wholly representative view on the current level of unemployment. Headline claimant unemployment will therefore combine JSA claimants and those UC claimants who are required to be available for and actively seeking work.

The new headline measure of claimant is available down to ward level on an age and gender basis.

It should be noted that as the ONS is still working on the methodology for creating these figures they are liable to retrospective revision. In July 2016, figures dating back to April 2015 were revised by the ONS.

### Headline Claimant Unemployment

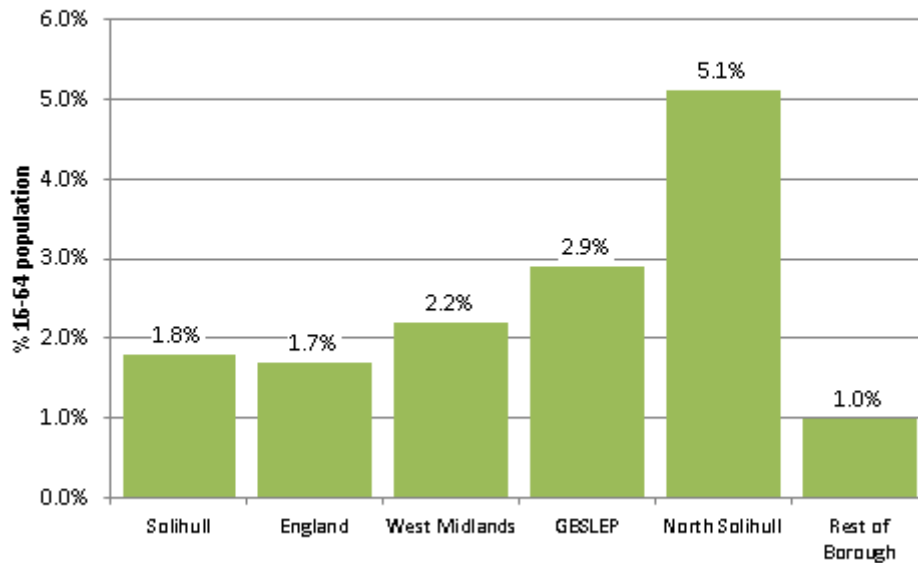
In December 2016 there were 2,220 individuals in Solihull claiming either Job Seekers Allowance or receiving Universal Credit and actively seeking work. This represents a claimant unemployment rate of 1.8%.

On this basis the headline claimant unemployment rate in Solihull is slightly above the England average (1.7%), but lower than those for the West Midlands (2.2%) and Greater Birmingham & Solihull LEP (2.9%).

Around 53% of claimants in Solihull (1,185 individuals) live in the three North Solihull regeneration wards (Chelmsley Wood, Kingshurst & Fordbridge and Smith's Wood) where the rate is 5.1% compared with 1.0% across the rest of the Borough.

Working Age Claimant Unemployment (JSA+UC claimants) – December 2016						
Area	Claimant Count Dec 2016	% 16-64		Annual Change (Dec 2015-2016)		
		Dec 2015	Dec 2016	Count	%	Trend
Solihull	2,220	1.5%	1.8%	+300	+16%	↑
<i>North Solihull</i>	1,185	4.4%	5.1%	+155	+15%	↑
<i>Rest of Borough</i>	1,030	0.9%	1.0%	+140	+16%	↑
England	606,000	1.7%	1.7%	+23,485	+4%	↑
West Midlands	80,480	2.1%	2.2%	+6,335	+9%	↑
GBSLEP	36,380	2.7%	2.9%	+2,365	+7%	↑
Other Comparators						
Met Councils	202,755	2.6%	2.7%	+5,760	+3%	↑
CIPFA Comparator Councils	28,970	1.2%	1.2%	+395	+1%	↑
Data Source: ONS/Nomis						

## Headline Claimant Unemployment December 2016

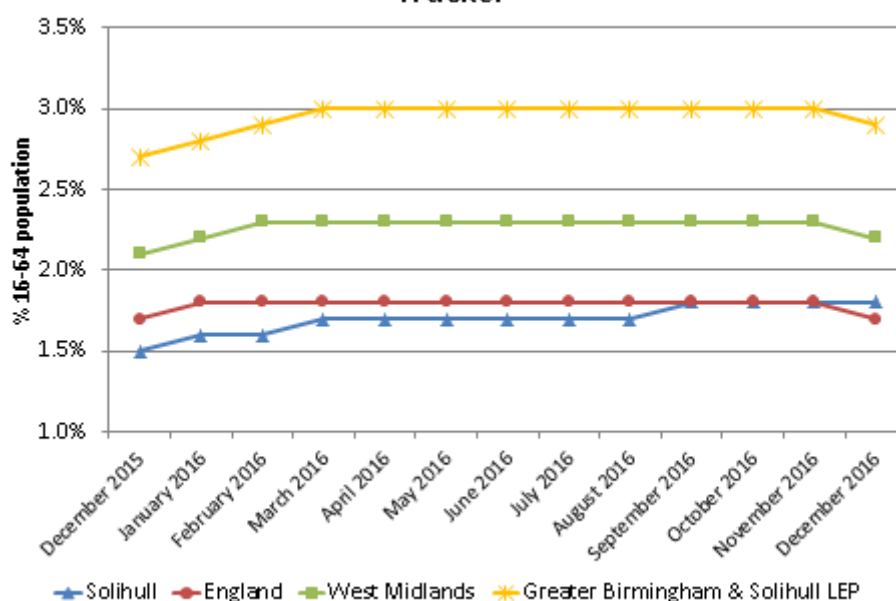


Source: ONS/Nomis and DWP/StatXplore

Following four consecutive monthly increases, the claimant unemployment count in Solihull fell in both November (-45 claimants) and December 2016 (-10 claimants). However, the number of claimants in Solihull is 16% higher than in December 2015 (+300 individuals). This rise in Solihull is consistent with, albeit more pronounced than national and regional trends (England +4%, West Midlands +9%). The number of claimants in North Solihull increased by +15% (+155 individuals) over the last year, mirroring a rise across the rest of the borough (+16%, +140 individuals).

The rise in the number of claimants in Solihull between December 2015 and 2016 resulted in an increase in the claimant unemployment rate of 30 basis points (from 1.5% to 1.8%). The rate increased in both North Solihull (from 4.4% to 5.1%) and across the rest of the Borough (from 0.9% to 1.0%) over this period.

## Headline Claimant Unemployment Rates: 12 Month Tracker



Source: ONS/Nomis and DWP/StatXplore

### Gender Breakdown

Around 61% of Solihull claimants are male (1,345 individuals) and 39% female (870 individuals), which is consistent with the gender split nationally. The claimant unemployment rate in Solihull is in-line with the national average for both males, but slightly above for females.

Claimant Unemployment by Gender - December 2016						
	Count		% all claimants		Rate	
	Male	Female	Male	Female	Male	Female
Solihull	1,345	870	61%	39%	2.2%	1.4%
England	378,210	227,795	62%	38%	2.2%	1.3%
West Midlands	50,645	29,830	63%	37%	2.8%	1.7%
GBSLEP	23,165	13,215	64%	36%	3.7%	2.1%
Data Source: ONS/Nomis						

### Age Breakdown

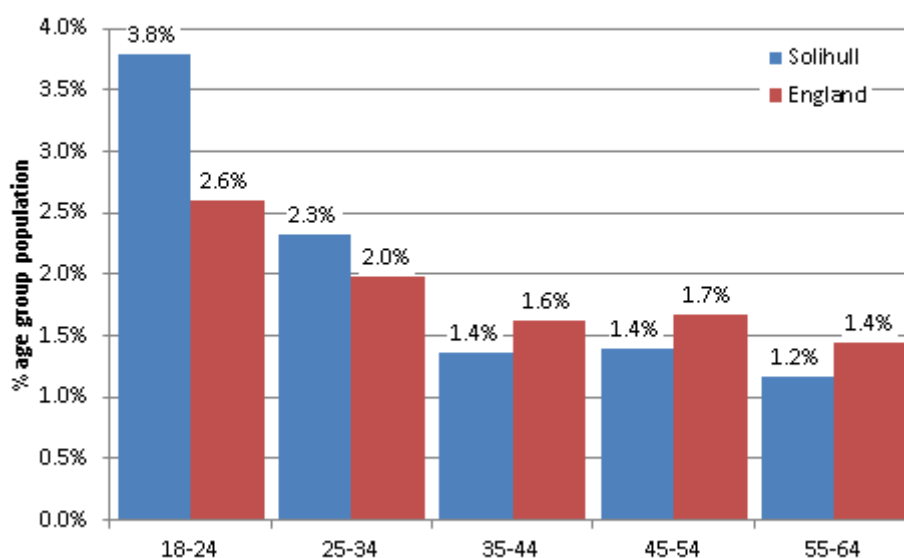
In December 2016 just over a half of all claimants in Solihull were under the age of 35, with 18-24 year olds the largest single group (610 individuals, 27% of all claimants). This is consistent with the distribution of claimants nationally and is as much due to increasing take up of other benefits, particularly sickness benefits such as Employment Support Allowance, among older age groups as increasing employment rates.

Solihull's claimant unemployment rate is above the England average among 18-24 year olds and is also marginally higher for those aged 25-34 years. However, it is below average among older age groups.

	Solihull Claimants December 2016		Rates (% Age Group)	
	Claimant Count	% Total	Solihull	England
Age 18-24	610	27%	3.8%	2.6%
Age 25-34	530	24%	2.3%	2.0%
Age 35-44	345	16%	1.4%	1.6%
Age 45-54	445	20%	1.4%	1.7%
Age 55-64	290	13%	1.2%	1.4%
Total			1.8%	1.7%

Source: ONS/Nomis

## Headline Unemployment Rates by Age Group December 2016



Source: ONS/Nomis and DWP/StatXplore

### Youth Unemployment (18-24 year olds)

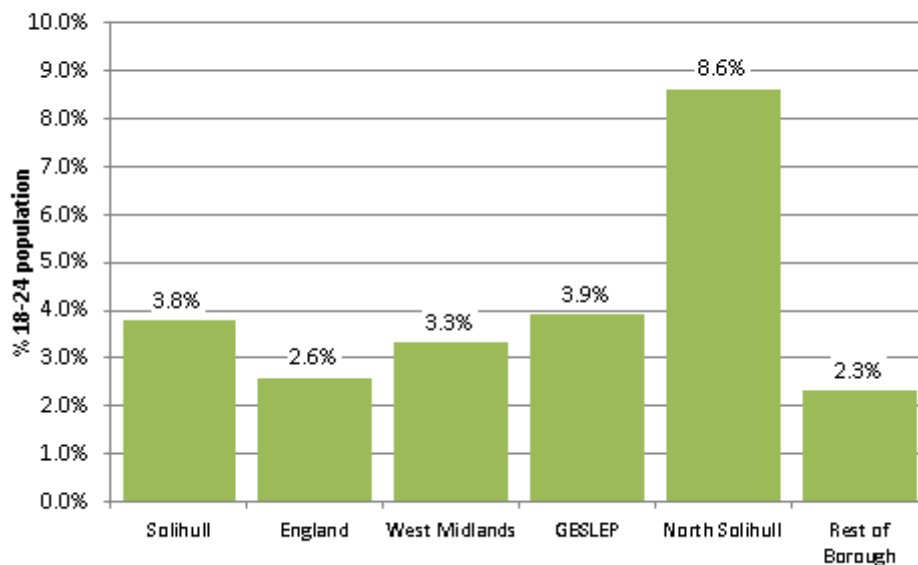
In December 2016 there were 610 18-24 year olds in Solihull claiming either Job Seekers Allowance or receiving Universal Credit and actively seeking work. This represents an 18-24 year old claimant unemployment rate of 3.8%.

On this basis the 18-24 claimant unemployment rate in Solihull is higher than the England average (2.6%) and that for the West Midlands (3.3%). In order to match the England average rate the number of 18-24 year old claimants in Solihull would have to fall by 193 individuals.

Around 53% (325 individuals) of 18-24 year old claimants live in the three North Solihull regeneration wards (Chelmsley Wood, Kingshurst & Fordbridge and Smith's Wood), where the rate is over three and a half times higher than across the rest of the Borough (8.6% compared to 2.3%).

18-24 Claimant Unemployment (JSA+UC claimants) – December 2016						
Area	Claimant Count Dec 2016	% 18-24		Annual Change (Dec 2015-2016)		
		Dec 2015	Dec 2016	Count	%	Trend
Solihull	610	3.3%	3.8%	+75	+14%	↑
<i>North Solihull</i>	325	8.1%	8.6%	+20	+7%	↑
<i>Rest of Borough</i>	285	1.9%	2.3%	+50	+21%	↑
England	127,585	2.5%	2.6%	+4,825	+4%	↑
West Midlands	17,845	2.9%	3.3%	+1,960	+12%	↑
GBSLEP	7,925	3.6%	3.9%	+545	+7%	↑
Other Comparators						
Met Councils	45,075	3.7%	3.7%	+720	+2%	↑
CIPFA Comparator Councils	6,165	2.1%	2.0%	-450	-7%	↓
Data Source: ONS/Nomis						

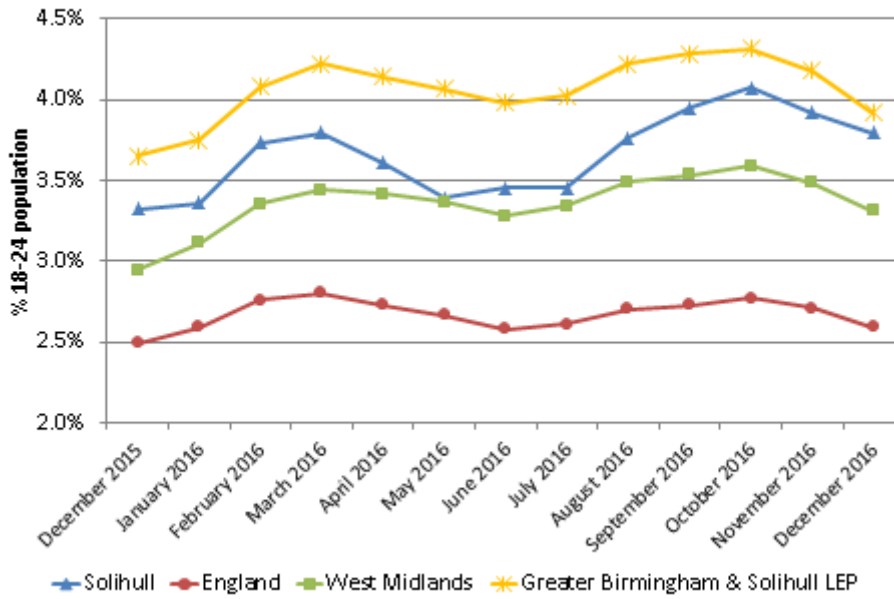
## 18-24 Claimant Unemployment December 2016



Source: ONS/Nomis and DWP/StatXplore

Following three consecutive monthly increases, the 18-24 claimant unemployment count in Solihull fell in both November (-25 claimants) and December 2016 (-20 claimants). However, the number of 18-24 year old claimants is +14% (+75 individuals) higher than in December 2015. The claimant rate among this group has risen from 3.3% to 3.8% as a result, although there have been substantial seasonal fluctuations during this period. The number of claimants in North Solihull increased by +7% (+20 claimants) in the year to December 2016, with an increase of +21%, (+50 individuals) in the rest of the borough.

### Youth Claimant Unemployment Rates (18-24 Year olds): 12 Month Tracker

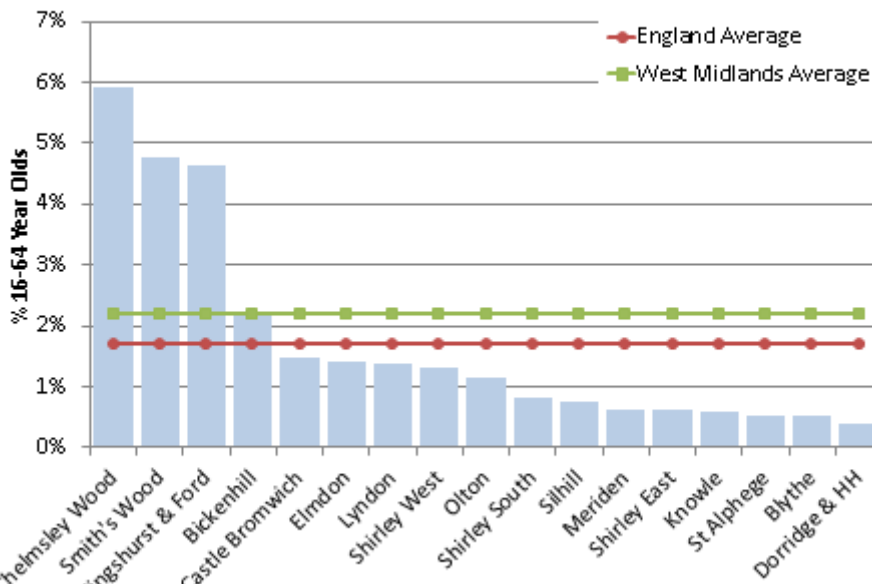


Source: ONS/Nomis and DWP/StatXplore

### Ward Claimant Unemployment

Only three wards in Solihull have a claimant unemployment rate higher than the West Midlands average: Chelmsley Wood (5.9%), Smith's Wood (4.8%) and Kingshurst & Fordbridge (4.6%).

### Ward Claimant Unemployment December 2016



Source: ONS/NOMIS

Between December 2015 and 2016 claimant unemployment increased in all except three of Solihull's 17 wards.

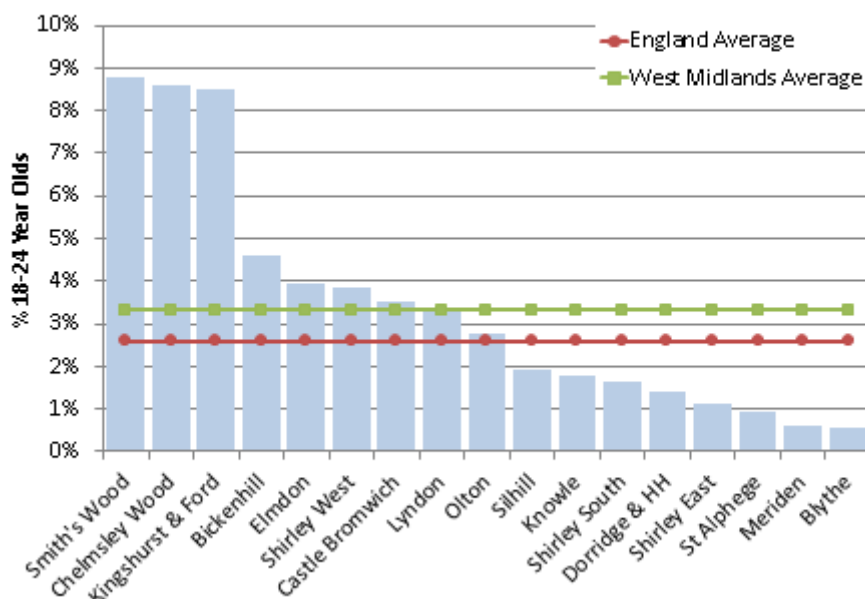
Claimant Unemployment – December 2016						
	Count Dec 2016	% 16-64		Annual Change (Dec 2015-2016)		
		Dec 2015	Dec 2016	Count	%	Trend
Bickenhill	165	2.2%	2.2%	0	0%	↔
Blythe	45	0.4%	0.5%	+10	+29%	↑
Castle Bromwich	105	1.3%	1.5%	+15	+17%	↑
Chelmsley Wood	445	5.3%	5.9%	+45	+11%	↑
Dorridge & Hockley Heath	25	0.3%	0.4%	+5	+25%	↑
Elmdon	105	1.2%	1.4%	+20	+24%	↑
Kingshurst & Fordbridge	370	4.1%	4.6%	+40	+12%	↑
Knowle	35	0.3%	0.6%	+15	+75%	↑
Lyndon	115	1.1%	1.4%	+20	+21%	↑
Meriden	45	0.6%	0.6%	+5	+13%	↑
Olton	85	1.1%	1.1%	+5	+6%	↑
Shirley East	45	0.8%	0.6%	-10	-18%	↓
Shirley South	60	0.6%	0.8%	+15	+33%	↑
Shirley West	95	1.0%	1.3%	+20	+27%	↑
Silhill	55	0.8%	0.8%	0	0%	↔
Smith's Wood	370	3.9%	4.8%	+65	+21%	↑
St Alphege	45	0.5%	0.5%	+5	+13%	↑
Data Source: ONS/Nomis						

#### Ward 18-24 Claimant Unemployment

The number of Solihull wards that have an 18-24 year old claimant unemployment rate higher than the West Midlands average has now increased to eight: Smith's Wood (8.8%), Chelmsley Wood (8.6%), Kingshurst & Fordbridge (8.5%), Bickenhill (4.6%), Elmdon (4.0%), Shirley West (3.9%), Castle Bromwich (3.5%) and Lyndon (3.4%).





## Ward 18-24 Claimant Unemployment December 2016



Source: ONS/NOMIS

Between December 2015 and 2016 the number of 18-24 year old claimants increased in 11 out of Solihull's 17 wards, falling in just one.

	18-24 Claimant Unemployment – December 2016					
	Count Dec 2016	% 18-24		Annual Change (Dec 2015-2016)		
		Dec 2015	Dec 2016	Count	%	Trend
Bickenhill	45	4.6%	4.6%	0	0%	↔
Blythe	5	0.6%	0.6%	0	0%	↔
Castle Bromwich	35	3.0%	3.5%	+5	+17%	↑
Chelmsley Wood	105	8.2%	8.6%	+5	+5%	↑
Dorridge & Hockley Heath	10	0.7%	1.4%	+5	+100%	↑
Elmdon	35	2.8%	4.0%	+10	+40%	↑
Kingshurst & Fordbridge	110	8.5%	8.5%	0	0%	↔
Knowle	10	0.0%	1.8%	+10	+100%	↑
Lyndon	35	2.4%	3.4%	+10	+40%	↑
Meriden	5	0.0%	0.6%	+5	+100%	↑
Olton	25	2.2%	2.8%	+5	+25%	↑
Shirley East	10	1.1%	1.1%	0	0%	↔
Shirley South	15	1.1%	1.7%	+5	+50%	↑
Shirley West	35	2.2%	3.9%	+15	+75%	↑
Silhill	15	1.9%	1.9%	0	0%	↔

Smith's Wood	110	7.6%	8.8%	+15	+16%	
St Alphege	10	1.4%	0.9%	-5	-33%	
Source: Claimant Count, ONS/Nomis						

## Methodology Notes

### Universal Credit

From May 2015 onwards there has been a phased introduction of Universal Credit (UC) in Solihull which will replace a number existing benefits including (means tested) Job Seekers Allowance for new claimants.

The Pathfinder for UC started on 29 April 2013 and the programme is being gradually rolled out across the country. At the moment UC is only available to single claimants without a partner and without child dependents (hence why more than half of current UC claimants in Solihull are under the age of 35 years).

In response to the growing number of areas introducing UC the ONS have announced a change to the definition of the measurement of the Claimant Count. From May 2015 the ONS headline measure of the Claimant Count was changed to include out of work claimants of Universal Credit. In July 2016 this definition was again changed so that only those Universal Credit claimants who are required to be available for and actively seeking work are included. This change resulted in the ONS retrospectively revising figures dating back to April 2015

### Comparator Areas

Greater Birmingham & Solihull Local Enterprise Partnership (GBSLEP): Birmingham, Solihull, Cannock Chase, East Staffordshire, Lichfield, Tamworth, Bromsgrove, Redditch, Wyre Forest

Chartered Institute of Public Finance & Accountancy (CIPFA) nearest neighbour comparator Local Authorities: Bedford, Central Bedfordshire, Bury, Chester East, Chester West & Chester, Stockport, Trafford, Warrington, Bath & North East Somerset, North Somerset, Poole, South Gloucestershire, Swindon, Wiltshire, York

Metropolitan Councils: Gateshead, Newcastle Upon Tyne, North Tyneside, South Tyneside, Sunderland, Bolton, Bury, Manchester, Oldham, Rochdale, Salford, Tameside, Trafford, Wigan, Knowsley, Liverpool, Sefton, St Helens, Wirral, Barnsley, Doncaster, Rotherham, Sheffield, Bradford, Calderdale, Kirklees, Leeds, Wakefield, Birmingham, Coventry, Dudley, Sandwell, Walsall, Wolverhampton.