

**Notes of Rural Partnership Forum Meeting  
Thursday 9<sup>th</sup> February**

**Attendees:**

Stephen Munday, Director of Public Health (Chairman)  
Cllr David Bell, Meriden Ward  
Cllr Chris Burrows, Cheswick Green Parish Council  
Cllr Godfrey Chesshire, Balsall Parish Council  
Cllr Ian Courts, Dorridge & Hockley Heath Ward  
Wendy Evans, Solihull Partnership  
Margaret Fulford, Mothers' Union  
Kath Hemmings, Neighbourhood Manager  
Jacqueline Jones, West Midlands Fire Service  
Martin Lambert, Dorridge & District Residents' Association  
Jenny Lanfermeijer, Dorridge Patient Participation Group  
Cllr Peter Lea, Meriden Ward  
Cllr Gill Lewis, Hampton in Arden Parish Council  
Melanie Lockey, Solihull Partnership  
Philip Lockey, Solihull Partnership (notes)  
Dave Pinwell, SUSTAiN  
Cllr Jeffrey Potts, Knowle Ward  
Cllr Linda Poulson, Bickenhill Parish Council  
David Reed, Solihull MBC - Libraries  
Derek Tilford, SSAFA & Neighbourhood Watch  
Keith Tyndall, Balsall Common Village Residents Association  
Inspector Kerrie Whitehouse, W M Police

**Apologies:**

Cllr Ken Allsopp, Meriden Ward  
Sarah Brooke-Taylor, Warwickshire Rural Comm'y Council  
Cllr Ken Hawkins, Blythe Ward  
Cllr Diana Holl-Allen, Knowle Ward  
Claire Laland, Balsall & Berkswell Churches Together  
Chris Noble, Cheswick Green Parish Council  
Neil Walker, W M Police  
Rosie Weaver, Meriden Parish Council  
Trish Willetts, Solihull MBC  
Barbara Xifaras, Neighbourhood Watch

**1. Welcome and Introductions**

Stephen Munday opened the meeting by welcoming everyone followed by introductions around the room. Apologies were received and noted.

**2. Minutes if the Meeting held on 18<sup>th</sup> October**

The notes of the meeting held at Hockley Heath Primary School on the 18<sup>th</sup> October were approved, subject to updating the apologies to include Claire Laland, Churches Together in Balsall and Berkswell.

Matters arising:

- **Update from Centro:** Melanie Lockey reported that since December, a larger 16-seat bus has been operating on the taxi bus fixed trips. Additional trips have been added including a weekly service to Kenilworth on a Thursday.
- **Update on Community Transport:** Melanie noted to the group that Solihull MBC are looking at options to launch a pilot scheme in April 2012, which if successful will be widened later to cover other communities.
- **Actions to Reduce Poverty:** Cllr Burrows reported his disappointment in respect of the Council's budget to rural communities / partnership. Melanie confirmed that more information would be available on this by the next meeting.

### 3. Support to Residents group

A presentation was held informing everyone on the different forms of help available to residents groups, offered by Solihull SUSTAiN, Solihull Partnership and Solihull MBC:

- Dave Pinwell explained to the group that SUSTAiN offer support, advice, training and possible sources of funding to groups in the voluntary and community sector. They act as a voice at partnership meetings for community and voluntary organisations in Solihull. Dave also promoted the Voluntary & Community Sector Conference, which is being planned for April 2012. For further information on SUSTAiN: <http://solihull-sustain.org.uk/>
- Melanie Lockey informed everyone that the Solihull Partnership's role is to bring together all sectors to work collectively so they can add value and share expertise. She also reminded everyone that the role of the Partnership Forums is to inform and involve locals to enable communities to have the capacity to influence local policies. For further information on the Solihull Partnership: <http://www.solihull.gov.uk/solihullpartnership/default.htm>
- Kath Hemmings concluded the presentation by telling everyone that the role of Solihull Council is to work with resident groups. This should be done by contacting the neighbourhood coordinator for your area. The role of the neighbourhood coordinator is to work with the police, probation and youth services, to help resident groups to tackle local issues. She also reminded the group that ward councillors were also available to help them. For further information on neighbourhood coordinators: <http://www.solihull.gov.uk/neighbourhoodmanagement/default.htm>. Kath also explained to the group she could provide workshops for local groups on how to achieve a 'Voice'.

A discussion followed on the difficulties resident groups face in attracting new members to join their local groups, particularly younger members.

Dave Pinwell noted inter-generational involvement as a critical challenge to overcome in order to attract younger members; this is more relevant in some parts of the borough than others. Kerry agreed with Dave's comments and reported that engaging with young people was an on-going problem for the police too; although the police have been encouraged recently by pupils volunteering to support StreetWatch.

As a way forward with this issue, it was suggested that contact is made with local schools and youth groups to see if they can get younger people involved in local community groups this way.

The group also discussed neighbourhood plans, and the funding of them as they are not limited to particular parish council boundaries. Councillor Courts offered to provide a more detailed information in relation to neighbourhood plans at a future meeting if the group would find that useful. Dave Pinwell, confirmed following questions that it was not appropriate for voluntary sector funding to be used to help with completing neighbourhood plans; however funding could be available, for example, in supporting the development of a new local sports team. Forum members were directed to contact SUSTAiN on any funding issues. The group were advised that the draft Local Development Framework is now open for consultations, and any representations have until Monday 5<sup>th</sup> March to respond.

#### **4. Review of Arrangements for this forum**

During the last meeting it had been decided that the issue of whether these meetings would have their own elected chair and vice chair and whether they should be open to the public would be discussed.

Prior to the meeting a paper had been circulated, outlining a review of the arrangements for this forum. Stephen proposed the following options to the group:

- Election of a Chair and Vice-Chair, who would be supported by the partnership team;
- Stakeholder involvement – open the forum meetings to members of the public;
- Continuation of current arrangements.

Having discussed the proposals for and against, forum members took a vote. A majority of 13 members were in favour of retaining the current arrangements, and only 2 votes were in favour of electing chairs and vice-chairs.

The group then went on to discuss whether the meetings should be open to the public. Concerns were raised that this could lead to meetings losing their broad focus and becoming to centred on single issues. It was agreed that future meetings would be advertised to the public; allowing a set time on the agenda for the public to raise issues (as with Parish Council meetings).

#### **5. Local Implications of Changes to the Health Service**

Stephen Munday gave a presentation on national reforms and the local implications of changes to the Health Service. He drew attention to the policy changes that are currently outlined in draft legislation, which include reforms to the NHS, Public Health and Social Care. Key topics covered in the presentation were:

- The reforms are aimed at improving health outcomes and developing more influence and control at a local level, as well as giving patients more of a say on how they wish to be treated
- The main NHS reform proposals include:
  - To create 'HealthWatch', an independent consumer champion that will represent diverse communities and aim to inform and aid patients in getting better outcomes from their healthcare.
  - To develop healthcare funding to Clinical Commissioning Groups (CCG's) at a local level. The CCG's will manage a budget and be responsible for designing and commissioning local health services; including planned hospital care, most community health services and rehabilitation care.

- CCG's will be made up of GPs, a registered Nurse, a doctor who specialises in secondary care. One of these Lay people will be either chair or vice chair of the board. They must meet in public and publish their documents.
- The main aims of the reforms are to improve the quality and efficiency of health services while reducing the £20bn of savings by 2014/15.
- The presentation also included detailed information on Patient Involvement and the Patient Choice Agenda, the new responsibilities for Local Authorities and reforms to Public Health (presentation will be circulated with the minutes).

Stephen closed his presentation by noting to the group, Solihull was in a good position for responding to the reforms, as they have made a lot of progress in preparing for them; including establishing a Shadow Health & Wellbeing Board, and the Solihull Primary Care Trust is now part of the Birmingham & Solihull NHS Cluster. Stephen then invited questions from the group.

Some concerns from the group were raised over HealthWatch being very similar to previous groups which have failed in the past. Stephen and Melanie replied to say the provision of HealthWatch is currently going through a development and tendering process for management provision.

Members of the group also asked if these reforms meant that there would be less forced travelling to Heartlands hospital for treatment. Stephen Munday responded by saying that the aim is to be able to offer a greater range of treatments for patients at Solihull hospital but that full independence would be virtually impossible. The provision of specialist services at Solihull Hospital will be affected by Patient Choice and commissioning.

Responding to questions, Stephen and Melanie clarified that services for the older population and mental health services would remain the priority of the Solihull Commissioning Group.

Concerns were also raised about the number of GPs on the Clinical Commissioning Board as it would be time consuming for these GPs and could impact on the level of care they provide for the patients. Stephen Munday explained that there will be 5 GPs who will be helped by a management source to ease the burden on them. Keith Tyndall raised concern about his local surgery opening hours in Balsall Common which are only open 4 days a week.

The group thanked Stephen for his informative presentation.

## **6. Identify Items for Discussion Next meeting**

Before the meeting closed, David Reed, Solihull MBC Library Service, detailed the new service provision for local residents who are housebound; and asked the group if they could identify residents who would benefit from the new service. David also asked forum members to take time to complete a survey (distributed to members at the meeting) seeking local views on Solihull Libraries. This is also available to be completed online: <http://www.surveymonkey.com/s/solihull-libraries>, the deadline for this is the end of February.

It was agreed the next meeting would be held on Thursday 28<sup>th</sup> June 2012. Forum members suggested that discussions at the next meeting include:

- Ideas for attracting younger members of the community to engage in resident groups
- Housing need in rural areas (particularly affordable housing)

Requests for any further items to be added to the next agenda can be sent to Hannah Colson: [hcolson@solihull.gov.uk](mailto:hcolson@solihull.gov.uk) or 0121 704 8258.

DRAFT

# Support to Residents Groups

## Rural Partnership Forum, 9/2/11

Melanie Lockey

Dave Pinwell

Kath Hemmings

# Purpose of Presentation

- ❑ To outline support available to residents groups from Solihull SUSTAiN, Solihull Partnership and Solihull Council.
- ❑ To be clear about the respective roles and responsibilities of the different organisations in working with residents groups.

# Solihull SUSTAIN

- ❑ The infrastructure support provider for the Voluntary and Community Sector in Solihull
- ❑ Provides:
  - ❑ Information and Advice
  - ❑ Development Support Services
  - ❑ Leadership and representation





# Information and advice

- ❑ Regular email 'Alerts' with relevant news including advice on legislative change, funding opportunities, training and other events.
- ❑ General problem solving, advice with constitutional, governance, IT, financial, accommodation and other resource management. Signposting to specialist services.
- ❑ Strong links with the business community and a track record of brokering partnerships and projects which benefit both voluntary organisations and businesses.

# Development Support Services

- ❑ Assistance with setting up a new group, reviewing policies & procedures, help with strategic development and business planning.
- ❑ Help to identify opportunities for funding, develop your funding strategy and train you in bid writing to improve your chances of success
- ❑ Signposting to specialist development resources and to regional and national organisations, brokering of partnership and collaboration arrangements.
- ❑ Provision of networking opportunities, including the Third Sector Network, aimed at all organisations, and its Annual Conference in April.

# Leadership and Representation

- ❑ SUSTAiN plays a key role in ensuring that the voice of the voluntary sector is heard and valued through participation in strategy development with Solihull partners and involvement in regional and national network.
- ❑ We also represent Solihull in regional and national community sector networks.
- ❑ To help ensure that as many voices are heard as possible but in a cohesive and constructive way, and help those who represent the sector in various forums, the Voluntary Sector Reference Group has been established and is facilitated by SUSTAiN.

# Solihull Partnership

- ❑ The purpose of the Solihull Partnership is to bring together the statutory, voluntary, community and business sectors to work on common priorities.
- ❑ Partnership Forums are the local face of the Partnership. They give the opportunity to:
  - ❑ Exchange information about what different organisations are doing in Solihull.
  - ❑ Give local organisations a direct opportunity to influence the priorities and work of the Solihull Partnership.
  - ❑ Discuss how common issues and priorities can be tackled.
  - ❑ Consult on significant policy or service proposals affecting the local area.
- ❑ They meet 3 times a year

# Solihull Council

- ❑ First point of contact for Residents Groups is the Neighbourhood Coordinator for your ward.
- ❑ The Neighbourhood Coordinators help groups to achieve their aspirations and tackle local issues (environment, crime and anti-social behaviour).
- ❑ Work in partnership with the local policing teams, probation, youth services, neighbourhood sports etc.
- ❑ Many residents groups have good relationships with other Council teams – e.g. planning, transport & economic regeneration.
- ❑ Ward Councillors are also there to help.

# What Else Do You Want From Us?

- Any questions?
- What other help and support would you find useful?

# Over to you ....

- ❑ Information sharing discussion about how groups are tackling common issues such as:
  - ❑ attracting younger members
  - ❑ keeping members informed

**Rural Partnership Forum**  
**Thursday 9<sup>th</sup> February 2012**

**Review of Arrangements for the Forum**

**1. Purpose**

- 1.1 To review and make a proposal for the future operation of the Rural Partnership Forum.

**2. Matters for Consideration**

- 2.1 At your meeting on 28<sup>th</sup> June 2011, you reviewed what this Partnership Forum had achieved in its first year of operation and considered 2 proposals:
- i) That the Forum should elect your own Chair and Vice-Chair.
  - ii) That meetings should be open to the public and publicised.
- 2.2 The general consensus at this point was that it was too early to be making decisions about nominating your own chair and vice chair. It was agreed to revisit this after two more meetings.
- 2.3 Concerns were raised regarding opening the meetings to the public as it was feared the meetings would become a series of single issues affecting a particular area. An alternative suggestion was put forward that every invitee is able to bring someone with them.
- 2.4 At your meeting on 18<sup>th</sup> October, this was discussed again briefly under matters arising with 2 forum members expressing a strong view that the Forum should elect its own chair and that, as the Partnership Forums are publicly funded, they should be open to members of the public with an allotted time span given for public questions (as with Parish Council meetings).

**3. Proposal for the Future Operation of the Partnership Forum**

- 3.1 The Partnership officers supporting this forum remain of the view that for the forum to be sustainable and useful in the long term, you need to be directing your own agenda and actively working together to tackle local issues. Officers will continue to provide information and ideas and to link you to people and projects that might be able to help but we need you to be setting the agenda.
- 3.2 It is proposed, therefore, that you elect your own chair and vice chair who can work with the staff supporting the forums to shape your agenda. If you agree this proposal, we will seek nominations for chair and vice-chair prior to the next meeting (to be held on 28<sup>th</sup> June) and carry out the elections of chair and vice-chair by ballot at this meeting.
- 3.3 We will provide appropriate support to the chair and vice chair e.g. briefings and access to training and will also continue to provide secretarial support (e.g. distributing the meeting papers and taking the notes).
- 3.4 When the Partnership Forums were established in summer 2010, partnership officers wanted them to become public forums but we decided to allow them to



develop and mature for a period first. It is suggested that the forum is now sufficiently established to become open to the public and it is, therefore, proposed that forum meetings are open to and advertised to the public, starting with the meeting on 28<sup>th</sup> June. It is recognised that there is some danger of people turning up to meetings who just want to pursue a single issue. This can, however, be managed by structuring the agenda so that there a short public question and answer session at the start before moving onto a pre set agenda, and it is felt that the public accountability benefits outweigh the issues involved.

- 3.5 In addition, to opening up meetings to the public, we still need to continue to encourage participation from stakeholders who are not currently well represented at the forum. For example, it would be useful to hear from school, business and church representatives in this forum.

Sarah Barnes, 26.1.12

# Health Care, Social Care and Public Health – national reforms and local implications

Dr Stephen Munday  
Director of Public Health

# National Government Policy Changes

## Reforms of the NHS

- ('Equity and Excellence – Liberating the NHS')

## Reforms of Public Health

- ('Healthy Lives, Healthy People')

## Reforms of Social Care

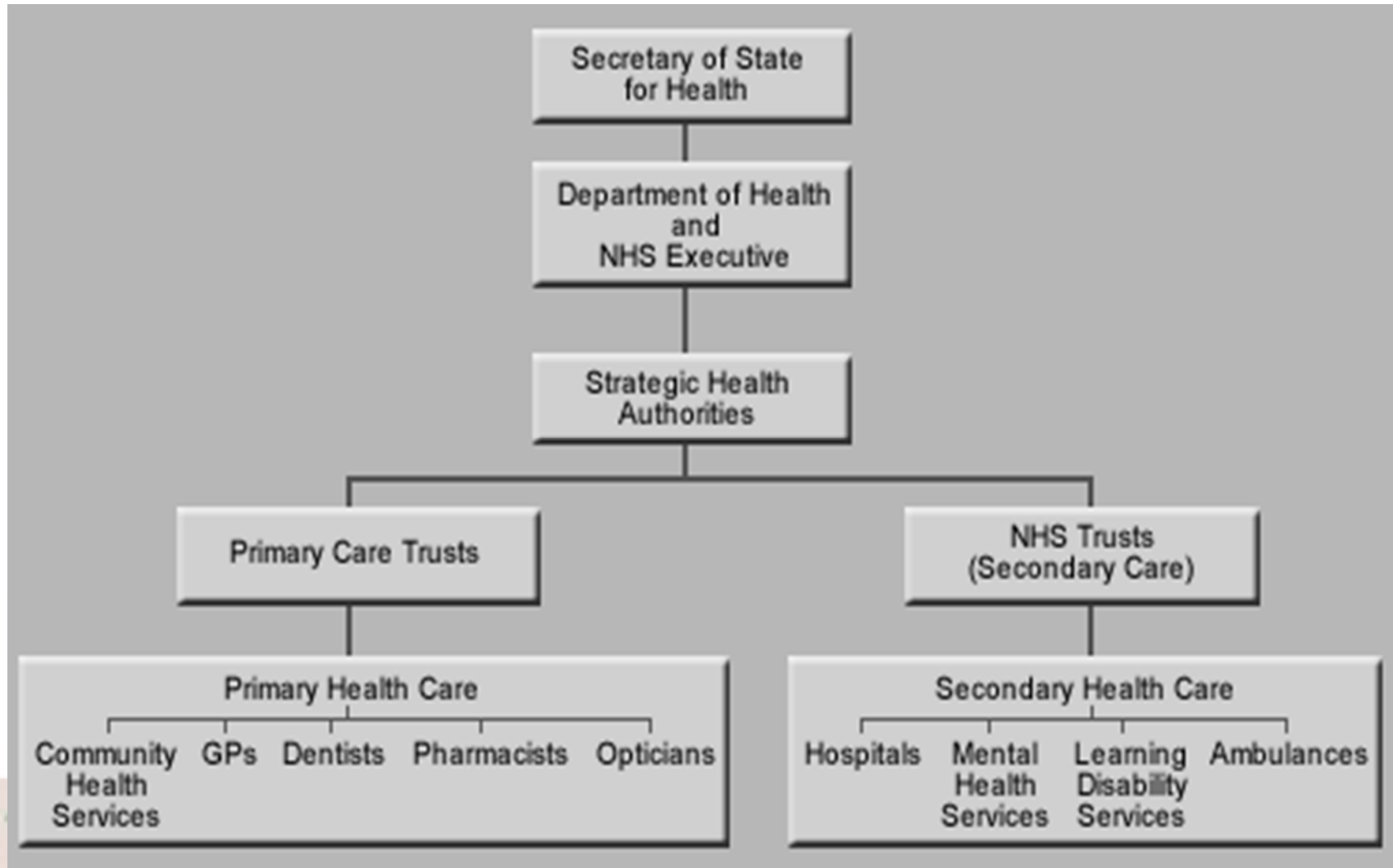
# NHS Reforms

- ❑ Reforms are intended to:
  - ❑ Improve health outcomes
  - ❑ Puts patients and public first
  - ❑ Devolve control and influence to local level
  - ❑ Improve efficiency and reduces bureaucracy

# Main NHS reform proposals

- Patients given more choice and control
- Create 'HealthWatch' – independent consumer champion
- Devolve health care funding to Clinical Commissioning Groups at local level
- Establish National Commissioning Board
- All NHS providers to become more independent
- Local Authority new health responsibilities

# Current organisation of the NHS



# Organisational implications

## Primary Care Trusts abolished by April 2013:

- ❑ Responsibilities (£) transfer to Local Authorities, National Commissioning Board or to Clinical Commissioning Groups

## Strategic Health Authorities abolished by April 2012:

- ❑ Responsibilities transfer to National Commissioning Board

# Clinical Commissioning Groups

- ❑ Responsible for designing and commissioning local health services:
  - ❑ Planned hospital care
  - ❑ Rehabilitation care
  - ❑ Urgent and emergency care
  - ❑ Most community health services
  - ❑ Mental health, learning disability and public health services (in partnership with Local Authority)
  
- ❑ **Clinical Commissioning Group Board:**
  - ❑ must meet in public and publish all documents
  - ❑ GPs
  - ❑ registered nurse
  - ❑ doctor who is a secondary care specialist
  - ❑ 2 lay people (1 governance & 1 patient engagement)
  - ❑ one of the lay members will be chair or vice-chair



# Improving the quality and efficiency health services (QIPP)

- ❑ National programme involving all NHS staff, patients, clinicians and the voluntary sector
- ❑ Aims to improve the quality and delivery of NHS care while reducing costs to make £20bn efficiency savings by 2014/15
- ❑ Savings will be reinvested to support the front line.

# Public and patient involvement

- ❑ Level of individual patient:
  - ❑ E.g. patients involved in their care and having choice about where they are referred
- ❑ Involvement of local groups:
  - ❑ E.g. Practice participation groups, local representative groups
- ❑ Feedback from service users and patient experience
  - ❑ E.g. satisfaction surveys
- ❑ Lay involvement in governance of the Clinical Commissioning Group
  - ❑ E.g. two lay members on CCG Board
- ❑ HealthWatch

# Patient Choice agenda

- ❑ 'Any qualified provider' concept – widen choice available of service provider
- ❑ Choice of service provider, including GP
- ❑ 'No decision about me without me' - actively involving patients in decisions about their treatment
- ❑ Provide easily understandable information – to enable patient choice

# HealthWatch

- ❑ Independent consumer champion - locally and nationally
- ❑ Promote better outcomes in health and social care (adults)
- ❑ Represent diverse communities
- ❑ Provide customer insight – e.g. people's views and experiences
- ❑ Influence policy, planning, commissioning and delivery of health and social care
- ❑ Provide information and advice to help people access and make choices about services
- ❑ Access independent complaints advocacy to support people if they need help to complain about NHS services

# New Responsibilities for Local Authorities

- ❑ Ensuring development of a health and wellbeing strategy supported by needs assessment
- ❑ Ensuring joined up commissioning/funding of local NHS services, social care and health improvement
- ❑ Supporting local voice and patient choice
- ❑ Establishment of a Health and Wellbeing Board
- ❑ Leading on local public health and illness prevention

# Public Health Reforms

(‘Healthy Lives, Healthy People’ - Public Health White Paper)

# Seizing opportunities for better health

- ❑ Too many people die too young, spending too long suffering from preventable ill-health, and the gap between rich and poor isn't improving
- ❑ Actions in the NHS, social care, education, transport and environment can all have a major impact on health
- ❑ Focus on prevention and early intervention

# Public Health

*Science and art of promoting and protecting health and prolonging life through the organised efforts of society*

- ❑ Health improvement (wider determinants, lifestyle)
- ❑ Health protection (infections, environment, emergencies)
- ❑ Health services (planning, effectiveness, quality)









**No Smoking  
in buildings or grounds**

NHS

This is a  
**Smoke Free Site**

To protect patients, staff and visitors  
do not smoke here

For information on stopping smoking, phone the NHS Smoking Helpline free on 0800 169 0 169





# Public Health programmes - Local Authority responsibility

- Tobacco control
- NHS Health Checks
- Physical activity
- Obesity
- Sexual health
- Drug and Alcohol misuse
- Accident prevention
- Mental health promotion
- Health intelligence
- Seasonal mortality
- Health at work
- Preventing birth defects
- Dental health/Fluoridation
- Prevention/early intervention
- Children 5 - 19 yrs
- School immunisation
- Community safety
- Social exclusion

# Solihull Response

- ❑ Solihull Primary Care Trust now part of Birmingham and Solihull NHS Cluster
- ❑ Community health services now provided by Heart of England Trust
- ❑ Social care - responsibility of the Solihull council
- ❑ Clinical engagement - built on existing arrangements with practices i.e. Solis and Sirius Consortia
- ❑ 'Solihull Health' Clinical Commissioning Group being established - operating in 'shadow' form from April 2012
- ❑ Health and wellbeing board established in 'shadow' form from April 2011
- ❑ Solihull council taking on public health responsibility from April 2012
- ❑ Maintained focus on improving health and improving services

# Examples of service improvements - community based

- ❑ Ear Nose Throat service (Balsall Common and Arden practices)
- ❑ DVT (blood clot) service (Solihull Walk in Centre)
- ❑ Musculo-Skeletal Triage Service
- ❑ One Stop Cardiology (heart) clinic (Monkspath and Parkfield practices)
- ❑ Audiology (hearing) service (Community Services, Specsavers or The Hearing Company)
- ❑ New premises - Balsall Common and Dorridge



**Notes of Rural Partnership Forum Meeting**  
**Thursday 28<sup>th</sup> June 2012**  
**Fentham Hall, Hampton-in-Arden**

**Attendees:**

Stephen Munday, Director of Public Health (Chairman)  
Sarah Barnes, Solihull Partnership  
Mike Blomer, Hampton-in-Arden Parish Council  
Phil Brandum, Dickens Heath Parish Council  
Hannah Colson, Solihull Partnership (notes)  
Len Cresswell, Cheswick Green Parish Council  
John Doidge, Hampton-in-Arden Parish Council  
Steven Hayes, Centro (Item 3 & 4 only)  
Kath Hemmings, Solihull MBC  
Graham Lock, Berkswell Parish Council  
Catherine Nolan, Solihull MBC (presentation on Adult Social Care)  
Dave Pinwell, SUSTAIN  
John Pitcher, Solihull MBC (presentation on Housing)  
Inspector Keith Portman, West Midlands Police  
Councillor Potts, Knowle Ward Councillor  
John Shayler, SSAFA & Neighbourhood Watch Co-ordinator  
Dave Simpson, Solihull MBC (presentation on Neighbourhood Planning)  
Derek Tilford, SSAFA

**Apologies:**

Councillor Bell, Meriden Ward Councillor  
Chris Burrows, Cheswick Green Parish Council  
Sarah Brooke-Taylor, Warwickshire Rural Community Council  
Councillor Brown, Blythe Ward Councillor  
Councillor Courts, Dorridge & Hockley Heath Ward Councillor  
Councillor Diccio, Meriden Ward Councillor  
Margaret Fulford, Mothers Union  
Councillor Hawkins, Blythe Ward Councillor  
Councillor Holl-Allen, Knowle Ward Councillor  
Mike Lynn, Barston Parish Council  
Councillor Martin, Bickenhill Ward Councillor  
Councillor Meeson, Dorridge & Hockley Heath Ward Councillor  
Linda Poulson, Bickenhill Parish Council  
Keith Tindall, Balsall Common Village Residents Association

**1. Welcome and Introductions**

Stephen Munday opened the meeting by welcoming everyone followed by introductions around the room.

**2. Minutes of the Meeting held on 9<sup>th</sup> February**

The notes of the meeting held at Meriden Church of England Primary School on the 9<sup>th</sup> February were approved, subject to amending Neil Walker's apologies to Birmingham & Solihull NHS Cluster (and removing WM Police).

Sarah Barnes also reminded the group to publicise the Civic Honours Awards amongst their wider networks. There are six award categories: The Arts, Sport, Community Involvement,

Making a Difference for Young People, Young Hero; and the Mayor's Award. Sarah advised the group last year's winner of the Mayor's Award was Derek Tilford who is present at this meeting. The nomination form has been circulated with the papers for the meetings; the closing date for all nominations is Saturday 21<sup>st</sup> July.

### 3. Public Items

Sarah reminded the group why there was a public item on the agenda, noting that it was agreed at the last forum meeting in February that a proportion of the agenda would be made available for members of the public to attend and raise any relevant issues. The approach taken to promote this was through notifying rural forum members through the current database and also by contacting Parish Council clerks.

Len Cresswell raised concerns that allowing the public to attend could draw big crowds if a contentious issue is discussed, so this would need to be managed appropriately. Forum members debated whether they would like HS2 to be discussed at a future forum meeting. Dave Simpson agreed to find out from council colleagues the best way forward for members of this forum to engage with HS2 discussions, either as a) an item for discussion at the next rural forum meeting or b) for those members who are interested to be invited to existing community forums which have been set up specifically to discuss HS2. Sarah agreed to let forum members know via email the outcome of this. Graham Lock suggested that the existing community forums had extensively discussed the pros and cons of HS2 and that any discussion at this forum should have a specific focus e.g. environmental implications. Councillor Potts suggested that any meeting about HS2 should be a single item agenda. Councillor Potts also requested that we clarify the procedures for members of this forum to request a special meeting.

### 4. Public Transport Discussion

Steven advised the group there were no major updates from Centro regarding rural public transport in the area. He notified the group that they were planning to do a consultation prior to June 2013 on rural bus services as the contracts will have been running for three years. The consultation will focus on amends to current services to suit local needs; initial meetings with a small group of stakeholders have indicated that:

- A faster service between Balsall Common to Solihull would be preferable
- Improvements in bus services between rural areas and Blythe Valley Business park to help improve access to employment would be supported by locals

Steven advised the group Centro will be doing much wider consultation in autumn, and that he will bring this back to the next rural forum meeting in October.

Steven promoted the use of the taxi bus which is available for all residents not just the elderly, operating within a particular area which includes; Meriden, Hampton-in-Arden, Balsall Common, Knowle, Bickenhill, Chadwick End. Its operating hours are between 8am-7pm. ***Steven asked for members of this group to make sure their local communities are aware of this facility.***

Dave Pinwell raised concerns around the Blue Diamond signature brand S2/S3 service which promotes onboard Wi-Fi, however the last few times he has used this service the Wi-Fi has not been working and he is also aware of concerns about regular use of substitute vehicles. Steven explained that he was aware of these issues, and asked for group

members to keep him updated regarding their service as Centro are monitoring this contract closely.

The group had a discussion about the route of the S3 bus and the fact it doesn't stop at the train station. Steven Hayes explained this was due to the tight timetable for the route, and that Centro were looking at ways to rectify this, for example linking the S3 bus with the No.30 which goes on to the train station. Steven agreed to keep forum members updated on progress with this issue.

Councillor Potts asked Steven Hayes to clarify what parts of Knowle Ward the taxi bus covers; which Steven agreed to take back with him and report back via email.

The group agreed there was a need to ensure as part of the consultation in autumn that bus timetables are integrated with train timetables. Steven agreed this has already proved successful in Berkswell and at Whitlocks End stations.

The group also queried what was happening around the London Midland review on 'Ticket Office Changes'. Steven advised the group that Centro are against the proposals which are awaiting a Government decision. Steven added Centro are currently working on proposals to take over local train stations, when the current franchise expires in 2015.

Len Cresswell raised concerns over the lack of room for buses to turn around at Whitlocks End station. Steven agreed this was frustrating, but advised Centro were doing all they could to make this safer for transport users by improving the bus stop facilities on the road by Whitlocks End.

Steven advised the group he would be happy to hold a workshop session on rural public transport at a future meeting if the group felt the need for this. Kath Hemmings agreed but suggested that we need to ensure that a wide range of stakeholders are present for this.

## **5. Meeting Rural Housing Need**

John Pitcher from Housing at Solihull MBC and Catherine Nolan from Adult Social Care at Solihull MBC gave a joint presentation on 'Meeting Rural Housing Need' (see presentation at the end of the minutes). It was noted that:

- There is a high level of housing need across the whole of the borough, the main issues within rural areas are the high price of housing and the unsuitability of housing for the elderly to live independently
- The importance of planning for the needs of today and the future with meeting rural housing need
- Adult Social Care principles are to assist people to maximise independence for as long as possible within their homes and the local community, to increase the number of personal budgets so people can use money to suit their individual needs and to reduce the reliance on more intensive forms of care.

Catherine ran through the outcomes and priorities for Adult Social Care in Solihull which the group found useful.

Len Cresswell asked if financial contributions made by developers in lieu of providing affordable housing were required to be spent elsewhere in the same wards on providing affordable housing. John replied that this was done where practical but that the Council had to take a range of things into account. A number of forum members felt that there should be a requirement for off site contributions to be spent in the same ward.

Kath Hemmings asked the presenters what their views on private housing developments in Solihull was? Catherine and John replied to say it is a challenging area as Solihull is a prime area for developers; which can also impact on the demographics within the borough as it can import older people into the borough. The Council are working with a range of providers to ensure that the developments are built to suit the needs of the local population.

Councillor Potts commented that affordable housing for young people in Knowle should be made a priority with any future housing developments.

Derek Tilford asked whether priority is being given to ex-armed forces people within the borough on the waiting list; John confirmed that this is the case. He also asked whether fair charges and top up fees are being applied correctly. Catherine replied to say, Solihull MBC is looking to make adjustments. Derek agreed to have a more detailed discussion on this with Catherine after the meeting.

## **6. Neighbourhood Planning**

Dave Simpson, from Neighbourhood Planning Team at Solihull MBC, gave forum members a short presentation on 'Neighbourhood Planning in Solihull'. The presentation (attached to the notes) covered the following points:

- The key principles behind neighbourhood planning and the different types of neighbourhood planning tools
- Who is able to get involved in neighbourhood planning: Parish or Town Council, where there is one' otherwise a community group can apply to become a 'Neighbourhood Forum'
- The key stages in the process for applying for a neighbourhood plan
- The role and support of Solihull MBC
- Things to consider before starting the process

Dave explained to the group that the protocol, which Solihull MBC have produced to help those considering producing a neighbourhood plan will be sent out to all Parish and Town Councils and local community groups within the next few weeks.

Len Cresswell queried if neighbourhood plans were useful as the rules state they must conform with the Local Development Framework (LDF) principles. Dave responded to say the neighbourhood plans should not cut across strategic policy, which is the LDF but can usefully cover matters such as housing types and design standards. The group were advised if they had any further questions to contact someone from the neighbourhood planning team at the Council, either Dave Simpson (0121 704 6395 [dsimpson@solihull.gov.uk](mailto:dsimpson@solihull.gov.uk)), Emma Tinsley-Evans (0121 704 6428 [etinsley@solihull.gov.uk](mailto:etinsley@solihull.gov.uk)) or Sarah James (0121 704 8376 or [sajames@solihull.gov.uk](mailto:sajames@solihull.gov.uk))

## **7. Identify Items for Discussion Next Time**

The proposed date for the next rural forum is Thursday 18<sup>th</sup> October 2012. Forum members suggested that discussions at the next meeting include:

- HS2 discussion
- Centro Transport consultation
- Short presentation from Len Cresswell on Local Waterways partnership work

Requests for any further items to be added to the next agenda can be sent to Hannah Colson: [hcolson@solihull.gov.uk](mailto:hcolson@solihull.gov.uk) or 0121 704 8258.

Sarah advised the group of an 'Intergenerational Event' taking place on Tuesday 25<sup>th</sup> September, at Arden School which the Youth Council are encouraging. Sarah asked for group members to promote this amongst their elderly communities and encourage them to attend. Kath Hemmings suggested asking Centro to help provide transport for the event, which Sarah agreed to look into.

Sarah encouraged group members to complete feedback forms which will also be circulated with the minutes.

**Actions:**

<b>Action</b>	<b>By Whom</b>
1. To promote & provide nominations for the Civic Honours Awards	All
2. To find out the most appropriate way for rural forum members to get involved in discussions around HS2	Dave Simpson
3. Advise forum members by email on the procedure for calling a special meeting of this forum.	Sarah Barnes
4. Report the issue of Wi-Fi not working on S2/S3 service	Steven Hayes
5. To find out what parts of Knowle Ward are covered by the taxi bus	Steven Hayes
6. To update forum on progress around the S3 service prior to the next meeting (via electronic means)	Steven Hayes
7. To investigate whether Centro can provide transport for the 'Intergenerational Event' in November	Sarah Barnes
8. To complete Forum feedback forms	All

# **RURAL PARTNERSHIP FORUM**

## **Meeting Rural Housing Need**

**John Pitcher & Catherine Nolan**  
**Solihull Council**

# Meeting Rural Housing Need

## □ Housing Need

- Defining what we mean by 'need'
- Housing need in Solihull
- Housing need initiatives

## □ Affordable Housing

- What is it?
- The Problem! (money & land)
- How do we provide it?

# Meeting Rural Housing Need

## ❑ Solihull Draft Local Plan - 'Challenge B'

*- '..shortage of affordable housing, particularly for rent, in all areas..'*

*- '..need for a range of affordable housing for older people & for people with learning, physical and sensory disabilities and mental health needs'*



# Meeting Rural Housing Need

## □ 'Meeting Housing Needs' (Policy 4)

P4 b Rural Exceptions - Support for *affordable housing developments on green belt land where,*

*- proposal consistent with approved Village, Parish or Neighbourhood Plan & supported by Parish Council or Neighbourhood Group*

*- evidence that people with a local connection to the Parish area have a housing need that cannot be met through affordable housing on an allocated housing site*

# Meeting Rural Housing Need

## □ Questions to Consider?

- Affordable housing: how can it enhance/maintain rural communities?
- Affordable housing: tenure?, type & who for?
- Defining 'Local Connection'
- Ensuring 'Perpetuity'
- Community Land Trusts?  
[www.communitylandtrusts.org.uk](http://www.communitylandtrusts.org.uk)
- Warwickshire Rural Housing Association  
<http://www.warwickshirerha.org.uk/>

# Meeting Rural Housing Need

- ❑ Ageing Population
- ❑ Increasing population of people with complex needs
- ❑ Responses?
  - to enable vulnerable people to continue to live independently in their own homes through provision of support services
  - to encourage provision of a wider range of suitable and affordable independent accommodation for people who need or choose to move
  - market provision

# Adult Social Care – General Principles:

- Shift of power....from state to people
- Fewer contracts let by LA...increase in Personal Budgets
- Assist people to maximise independence for as long as possible
- Reduce reliance on more intensive forms of care
- Increasing numbers of older people, including people with disabilities, dementia

# Adult Social Care – Outcomes:

- ❑ Exercise choice and control: supported to make informed choices about care ~ (re-) acquire skills and confidence to manage their own affairs
- ❑ Enjoy an Improved Quality of Life: supported to access leisure, social and community activities
- ❑ Free from Abuse, Discrimination and Harassment: treated with respect and dignity

# Adult Social Care - Outcomes

- ❑ Enjoy Improved Health and Wellbeing: good physical, mental and emotional wellbeing  
~ access to urgent care if necessary
- ❑ Make a Positive Contribution: feel part of their local community
- ❑ Secures Economic Wellbeing: maximise their income ~ manage expenditure

# Adult Social Care - Priorities

- Financial challenges
- Reduce reliance on traditional forms of care  
~ promote choice via Personal Budgets
- Increase extra care/supported living
- Prevent hospital admission/assist early discharge
- Continue to facilitate contribution of voluntary & community sector

# Neighbourhood Planning in Solihull

Rural Partnership Forum  
28 June 2012

Dave Simpson  
Policy and Spatial Planning Manager  
Solihull MBC

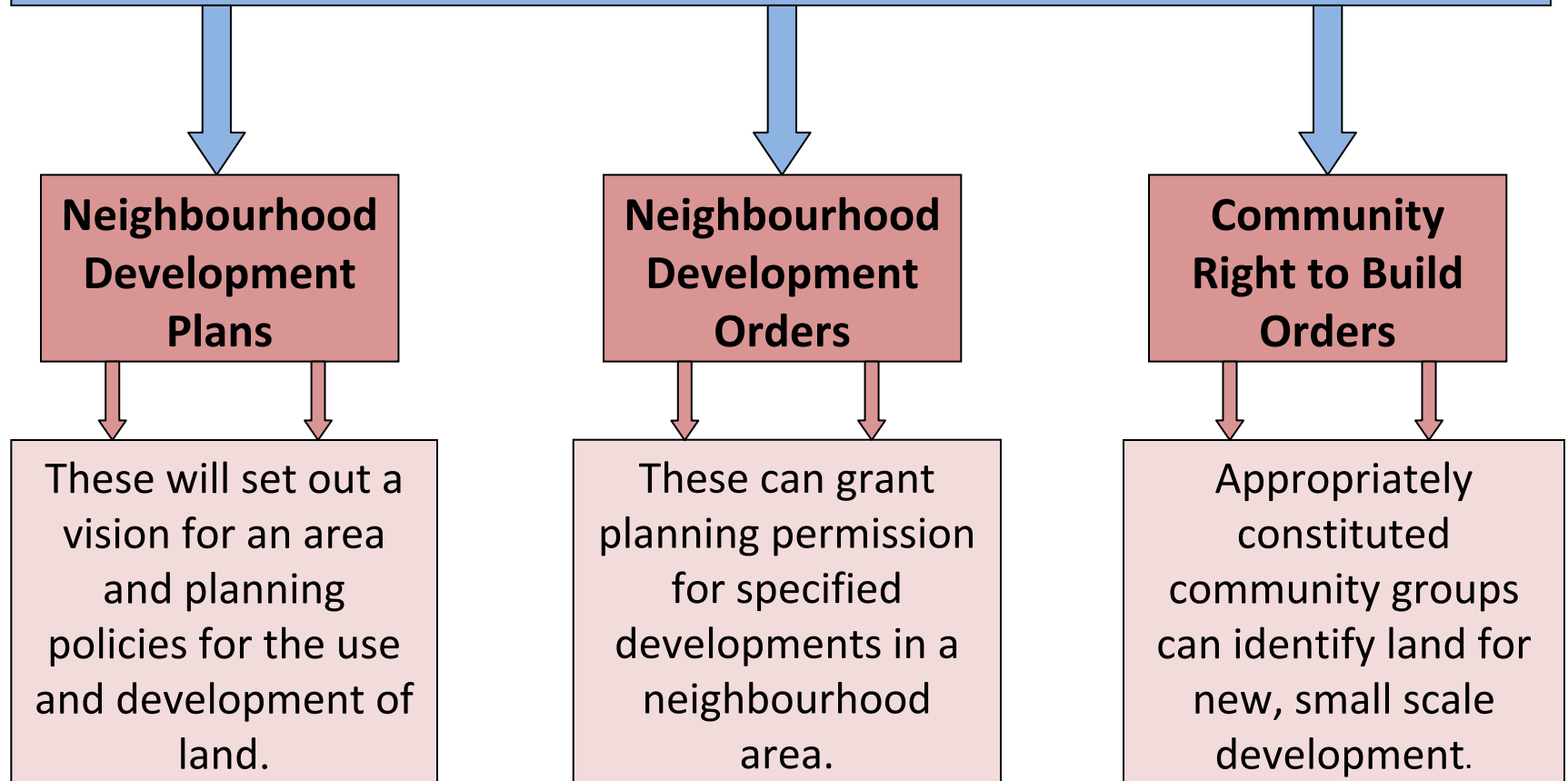




# What is Neighbourhood Planning?

- Part of the Government's Localism agenda
- Embodied in National Planning Policy and guided by Regulation
- New way for communities to shape the future of their area.
- Set of neighbourhood planning tools

# NEIGHBOURHOOD PLANNING TOOLS



# Who can get involved?

- Neighbourhood planning is open to everyone
- Parish or Town Council will take the lead
- Elsewhere, a community group can apply to be a 'Neighbourhood Forum'

# Before Getting Started

- Are you eligible?
- What do you want to achieve?
- Do you have the resources?

# How will it work - The Key Stages

- **Instigate the process**

Think about what you want to achieve. Is Neighbourhood Planning the best way?

- **Designate a Neighbourhood Area**

Boundary of area to be defined. Needs to be agreed by the local authority.

- **Prepare the Plan**

Content is up to you, but needs to be consistent with policy and regulations

# How will it work - The Key Stages

- **Engaging the community**

Involvement throughout the process is crucial

- **Independent Check**

To check the plan meets basic standards required by regulations and is in conformity

- **Community Referendum**

Ensures the community has the final say; more than 50% of people voting must be in support

- **Adoption of the Plan** - part of the Development Plan

# Local Authority Role

- Agree and formally designate the Neighbourhood Area
- Assess and formally designate the Neighbourhood Forum (in non-parished areas)
- Check that legislation and regulations have been complied with
- Arrange and pay for Independent Examination
- Organise and pay for the Referendum

# Solihull MBC Support

- Duty to support the process:
  - Continued guidance and advice
  - Sharing evidence and offering support
  - Guidance on consultation
  - Neighbourhood Planning webpage
  - Neighbourhood Planning Protocol and FAQs



# SMBC Protocol and FAQs

- Useful starting point
- Providing easy to read detail on the new powers
- Outlines the process of preparing a neighbourhood plan
- Clarifies the level and nature of SMBC support

# Key Facts

- Must be in conformity with the strategic policies of the local plan
- Must not promote less development than set out in the Local Plan
- Once adopted, part of the Development Plan for Solihull

# Things to consider

- Do you need a Neighbourhood Plan to resolve the problem?
- Resource issues - time and money
- Need support of the local community
- Talk to the Local Authority for advice

**Notes of Rural Partnership Forum Meeting  
Thursday 18<sup>th</sup> October 2012  
Balsall Common Village Hall, Balsall Common**

**Attendees:**

Stephen Munday, Director of Public Health (Chairman)  
Donovan Bailey, HS2  
Sarah Barnes, Solihull Partnership  
Councillor Bell, Meriden Ward Councillor  
Councillor Brown, Blythe Ward Councillor  
Hannah Colson, Solihull Partnership (notes)  
Councillor Courts, Dorridge & Hockley Heath Ward Councillor  
Len Cresswell, Cheswick Green Parish Council  
Councillor Diccico, Meriden Ward Councillor  
Andrew Harding, Centro  
Steven Hayes, Centro (Item 3 & 4 only)  
Kath Hemmings, Solihull MBC  
Jacqueline Jones, WM Fire Service  
Martin Lambert, Dorridge & District Residents Association  
Dr Gill Lewis, Hampton-in-Arden Parish Council  
Dave Pinwell, SUSTAIn & Solihull Partnership Governing Board Member  
Linda Poulson, Bickenhill Parish Council  
Inspector Keith Portman, West Midlands Police  
Councillor Potts, Knowle Ward Councillor  
John Shayler, SSAFA & Neighbourhood Watch Co-ordinator  
Bridget Sproston, Knowle Society  
Dave Strang, Solihull MBC  
Keith Tindall, Balsall Common Residents Association

**Apologies:**

Chris Burrows, Cheswick Green Parish Council  
Dickens Heath Parish Council  
Margaret Fulford, Mothers Union  
Hockley Heath Residents Association  
Councillor Holl-Allen, Knowle Ward Councillor  
Mike Lynn, Barston Parish Council  
Councillor Meeson, Dorridge & Hockley Heath Ward Councillor  
Meriden Parish Council  
Bhupendra Patel, WM Police  
Derek Tilford, SSAFA

**1. Welcome and Introductions**

Stephen Munday opened the meeting by welcoming everyone followed by introductions around the room.

**2. Minutes of the Meeting held on 28<sup>th</sup> June**

The notes of the meeting held at Fentham Hall in Hampton-in-Arden on the 28<sup>th</sup> June were approved as an accurate record of the meeting.

Sarah informed forum members of the procedure if they wish to call a special meeting; this can be requested either at a Partnership Forum meeting or by e-mail / telephone to the

Partnership Administrator between meetings. If requested at a Forum meeting, the chair will put it to the meeting and if a majority agree a special meeting will be convened. If a special meeting is requested in between meetings, the Partnership Administrator will e-mail everyone on the membership list and if a majority of those responding agree, a special meeting will be convened.

Sarah advised the forum that the Rural Intergenerational Event was held at Arden School on Tuesday 25<sup>th</sup> September and it was deemed a successful event, with both young and old members of the local community finding it beneficial. It is hoped the success of this event will be a good base to build on future similar events. Sarah noted she will keep forum members informed of any future events.

### **3. Public Items**

Stephen reminded the forum of the reason why we have a section on the agenda for public items. Forum members asked how it has been publicised and Sarah replied to say mainly through Parish Councils at the moment. The group felt that the meetings should be publicised more widely. There was then a lengthy discussion about methods that can be used for publicising and communicating with rural communities, including using parish council magazines, council twitter feed, Your Solihull.

Sarah agreed to do a short report of this meeting along with a note promoting the date of the next meeting and to circulate it to Parish Councils and Resident Associations so they can publish the information in their magazines. In response to a suggestion, Sarah also agreed to provide information on how the public part of the agenda works so that anyone contemplating coming along knows what to expect and how to get involved..

### **4. High Speed 2 – Consultation & Information**

Donovan Bailey provided forum members with an overview of the HS2 process, explaining that the Government gave the go ahead in January 2012 for the route to be developed. HS2 are now listening to community representatives and giving them the opportunity to talk to the designers and environmental experts, this will continue until the end of next year. Following this, a hybrid bill will go through Parliament, estimated to take about 2 years and during that period people still have the opportunity to petition. Once development starts, the estimate is 10 years to construct, align and build stations with the line expected to run live from 2026. Phase 2 is Birmingham up to Leeds / Manchester in a y shape which is estimated to be live from 2033.

Donovan explained that his role as stakeholder engagement manager is to have as much dialogue with people as possible as HS2 realise that the project will have a huge impact on communities and the environment. Donovan advised that HS2 have developed Community Forums (membership by invite) which he is looking to improve. Donovan also explained HS2 is working closely with Solihull Council's working party. HS2 are also happy to hold bi-lateral meetings in between the Community Forum meetings for constituted or non-constituted groups to give them information about HS2.

Gill Lewis asked if HS2 could hold community meetings in local villages? Donovan stated that HS2 are concerned about the potential for open meetings to get out of control. Their agreed approach is to talk to communities through the representatives who attend the HS2 community forums and also through bilateral meetings with local groups. Donovan offered to attend bi-lateral meetings with any groups that wished to speak to him.

Councillor Potts asked if the HS2 Community Forums are advertised. Donovan explained in the past they have not been advertised but he is looking to put some kind of information about them in the public domain (not the date of the meeting though).

Councillor Courts, chair of Solihull Council's HS2 working party, commented that the working party was concerned that HS2 community forums did not meet often enough and were not open enough to the general public. He continued to say the Council's working party is exploring potential to include an open briefing session for an hour at the start of their monthly meeting to give information to local people about what is going on. Councillor Courts also advised the 'devil is in the detail' noting that there was a lot of information that people who are affected by it don't know about and it is about reaching those people. He stressed, however, that meetings need to be controlled and not about throwing brick bats,

Keith Tindall expressed a view that the HS2 Community Forums are just talking shops and that no real progress is being made. He commended the Council's HS2 working party for trying to think of ways to involve the public. In reply, Donovan agreed that the Community Forums could be improved, but stressed that matters raised are being addressed.

Gill Lewis asked what Donovan has worked on since being in post? Donovan replied to say he has just completed a Communications Strategy which highlights where the gaps are in engaging with people, and strategies have now been put in place to address all of the gaps.

Keith Tindall questioned how the 'Blight Compensation' consultation document which is due to be released soon was going to be communicated to those affected? Donovan replied to say the consultation team are currently working on that and the document will be released when the Secretary of State makes an announcement.

Councillor Potts asked if the Communications Strategy was available to view online. Donovan said it was not as it was more an internal document for HS2, but he agreed to take that back with him and get back to Councillor Potts.

Councillor Courts noted there is a need to think about publishing the information community by community and that what works for one community may not work for another.

The provisional dates of the Solihull Council's HS2 working party are 20<sup>th</sup> November, 12<sup>th</sup> December, 10<sup>th</sup> January 2013, 7<sup>th</sup> February 2013 and 7<sup>th</sup> March 2013. The meetings will be advertised on the Council's website and there will be a press release and a pull out feature in Your Solihull. The topics of the meetings are yet to be decided but they are more than likely to include safeguarding of the route and blight compensation.

Forum members made it clear that they feel there is a real need to have public meetings that anyone from the communities affected can attend. Donovan agreed to continue to work with Solihull Council and colleagues at HS2 to see what can be done. Dave Pinwell stated that in previous years, there have been public meetings in this area about controversial subjects which have been controlled and have not got out of hand.

Sarah agreed to keep forum members informed through the partnership forum database Donovan Bailey can be contacted at [Donovan.Bailey@hs2.org.uk](mailto:Donovan.Bailey@hs2.org.uk)

## **5. Rural Public Transport**

Steve Hayes from Centro gave a brief presentation on the 'Review of Bus Services in South Solihull' (see presentation at the end of the meeting notes). It was noted that:

- Contracts for existing services are due to expire in Summer 2013, which is giving CENTRO the opportunity to review the current network.
- The contracts which are due to expire include, S2a/c, S3, S4, S7, 82 and Heart of England Taxibus.
- 'Signature' branded buses (high quality buses ~ wi-fi, leather seats etc) have proved popular with customer expectations at 92% on the S2/3 route.
- CENTRO need to take lots into consideration when considering bus routes, including: hours of operation, frequency, journey times, places served and quality.
- The consultation is due to run through November / December, with the revised network designed during January 2013, further feedback will be sought on the proposed network in February and March 2013, with the new service due to be registered in April 2013 and running from June 2013.
- The new contracts are due to be in place for a longer period of time, as it is clear people don't like change.

Councillor Brown asked if the concessionary passes work on the 'signature' buses. Steve replied to say yes they do. Linda Poulson asked what the taxi bus was? Steve provided a brief overview of the taxi bus and offered to give Linda some leaflets on it so she can distribute them around her local area.

Councillor Potts asked for information on the consultation to be emailed to all the local councillors in Solihull so that they can disseminate the information out.

Councillor Bell questioned the region / area that the consultation covers? Steve responded to say it doesn't cover Warwickshire but if the results of the consultation show that local people want regular services to Kenilworth for example then CENTRO will consider this.

Councillor Courts, noted the need for a greater frequency of services, particularly in the Balsall Common area which is currently underserved by public transport.

Sarah Barnes advised the forum that we had invited members of the Youth Council to attend today's meeting to hear the information about the up-coming consultation; unfortunately they had been unable to attend but Sarah had received some feedback from them on the bus services in the rural areas which she would share with Steve outside the meeting. Sarah also commented that Youth Council representatives were keen to meet with CENTRO as part of the consultation process. Steve agreed to follow this up.

Steve asked forum members how they want CENTRO to get the message out about the consultation. Stephen Munday replied to say we could facilitate this through the Partnership Forum database. Kath Hemmings also offered to put some information about it in the Rural Newsletter and also to forward to schools and colleges. Steve agreed to put together some text and the details of how to access the questionnaire and to forward it to Hannah to circulate to the forum database. Forum members thanked Steve for his constructive presentation.

## **6. Local Waterways Partnership Work**

Len Cresswell, representing the Waterways Partnership, gave forum members a short presentation on 'The Canal & River Trust: Keeping people, nature & history connected'. The presentation (attached to the notes) covered the following points:

- The multi-functional use of the canals and the public benefit of the canals and rivers
- A brief overview of the Governance Structure of the Canal & River Trust.
- The focus of the local Waterways Partnership, including how they are starting to engage with Local Authorities and Parish Councils
- The challenges they are facing, including: resources; public perception, community engagement, regeneration and water control.
- The future plan for the Waterway Partnership.

Len concluded his presentation by stating they are looking for volunteers, and provided contact details if anyone is interested. Kath Hemmings agreed to speak with Len around the work the environmental champions are doing to see if they can link up.

## 7. Identify Items for Discussion Next Time

The proposed date for the next rural forum is Wednesday 27<sup>th</sup> February 2013. Forum members suggested items for discussion at the next meeting and subsequent meetings:

- Outcomes of bus review and draft network.
- Improving facilities for young people (particularly sports facilities) in rural areas.
- HS2 consultation update.
- The role of footways and cycleway in improving accessibility in rural areas.
- Improving broadband connectivity in rural areas.
- Opportunities to improve communications rural areas.
- Opportunities for greater use of volunteers and volunteering as a route into employment (building on environment champions and other successful initiatives).
- Update on initiatives to better meet the needs of older people (winter warmth etc)

Requests for any further items to be added to the next agenda can be sent to Hannah Colson: [hcolson@solihull.gov.uk](mailto:hcolson@solihull.gov.uk) or 0121 704 8258.

Stephen noted to the group the recent National Health Service reforms have brought about many changes to the way healthcare will be managed and improved in Solihull. The newly established shadow Health and Wellbeing Board has drawn up a draft Health & Wellbeing Strategy which is currently out for consultation, asking for people's views on the priorities set out in the document. Stephen asked people to fill in the online questionnaire or to contact Sangeeta Leahy with any comments.

- View the draft Solihull Health and Wellbeing Strategy [here](#) (PDF, 5 MB)
- [Answer just 8 questions to share your thoughts on the strategy](#)
- Email your views to us at [sangeeta.leahy@nhs.net](mailto:sangeeta.leahy@nhs.net)

**This listening exercise closes on 28 December 2012**



**Actions:**

<b>Action</b>	<b>By Whom</b>
1. Sarah to do a short report from this meeting and to publicise the date of the next meeting to send to Parish Council's so they can include the information in their magazines.	Sarah Barnes
2. Donovan to contact Councillor Potts regarding his communications strategy document.	Donovan Bailey
3. Forum members to contact Donovan Bailey with any HS2 comments at: <a href="mailto:Donovan.Bailey@hs2.org.uk">Donovan.Bailey@hs2.org.uk</a>	All
4. Sarah to keep Forum members informed of information about HS2 developments.	Sarah Barnes
5. Steve to provide some text and details about how to access the online questionnaire about the bus consultation and to send to Hannah.	Steve Hayes
6. Hannah to circulate information about the Bus Consultation to all local councillors and to the forum database so the information can be disseminated out.	Hannah Colson
7. Steve to arrange to speak with members of the Youth Council / local Youth Clubs as part of the bus consultation.	Steve Hayes
8. Steve to attend the next forum meeting in February to seek feedback on the proposed bus network following the consultation.	Steve Hayes
9. Forum members to contact Len Cresswell if they wish to be involved in the Waterways Partnership.	All
10. Kath Hemmings to speak with Len Cresswell about the link with Environmental Champions.	Kath Hemmings

# Review of Bus Services in South Solihull

Solihull Rural Partnership Forum  
Thursday October 18<sup>th</sup> 2012

- Since privatisation in 1986, the majority of bus services in UK have been operated commercially.
- Most services in this area now contracted to operate with public subsidy from Centro; not enough passengers for operators to run otherwise.
- Contracts for existing services expire Summer 2013.
- Opportunity to review current network, what is good, what isn't so good.
- **Not a cost-cutting exercise!!**
- ... but any changes need to give good value for money.

- **S2a/c** - Balsall Common via Knowle and Dorridge
- **S3** - Hockley Heath via Knowle and Dorridge
- **S4** - Cheswick Green via Shirley
- **S7** - Wythall via Tidbury Green and Dickens Heath
- **82** - Coventry via Meriden and Hampton in Arden
- Heart of England Taxibus

+ other possible opportunities

- Changes to needs since 2010



- Unresolved concerns from 2010 changes

- ‘Signature’ branded buses operating since 2010 on many routes (S2, S3, S4 and 82)
  - Patronage
    - Steady growth on services s2/3
    - 1<sup>st</sup> year growth of 40% on service 82
  - Customer Satisfaction
    - S2/3 operated by NXWM – 76%
    - S2/3 operated by Signature – 92%

More passengers means less public subsidy required and gives scope to develop services



- How much do users value quality?
- What is the role of taxibus?
- Understanding compromises:
  - Hours of operation
  - Frequency
  - Journey times
  - Places served
  - Quality

There's a 'cost' for improving any of these, either financially or expense of service levels elsewhere.



- November/December 2012 – consultation with local communities
- January 2013 – design revised network
- February/March 2013 – Feedback on proposed network
- April 2013 – new services registered
- June 2013 – revised services begin



# Canal & River Trust

Keeping people, nature & history connected



290.7 million visits to  
CRT waterways in  
2010, of which:



**93% Functional  
Users**



**4% Passionate  
Enthusiasts**



**3% Activity  
Seekers**



Canal &  
River Trust

# MULTI-FUNCTIONAL USE





- Free public open space available 24/7
- Safe routes to school
- Safe commuting routes
- Healthy walks
- Environmental and Heritage classroom
- Living and working museum
- A place to relax

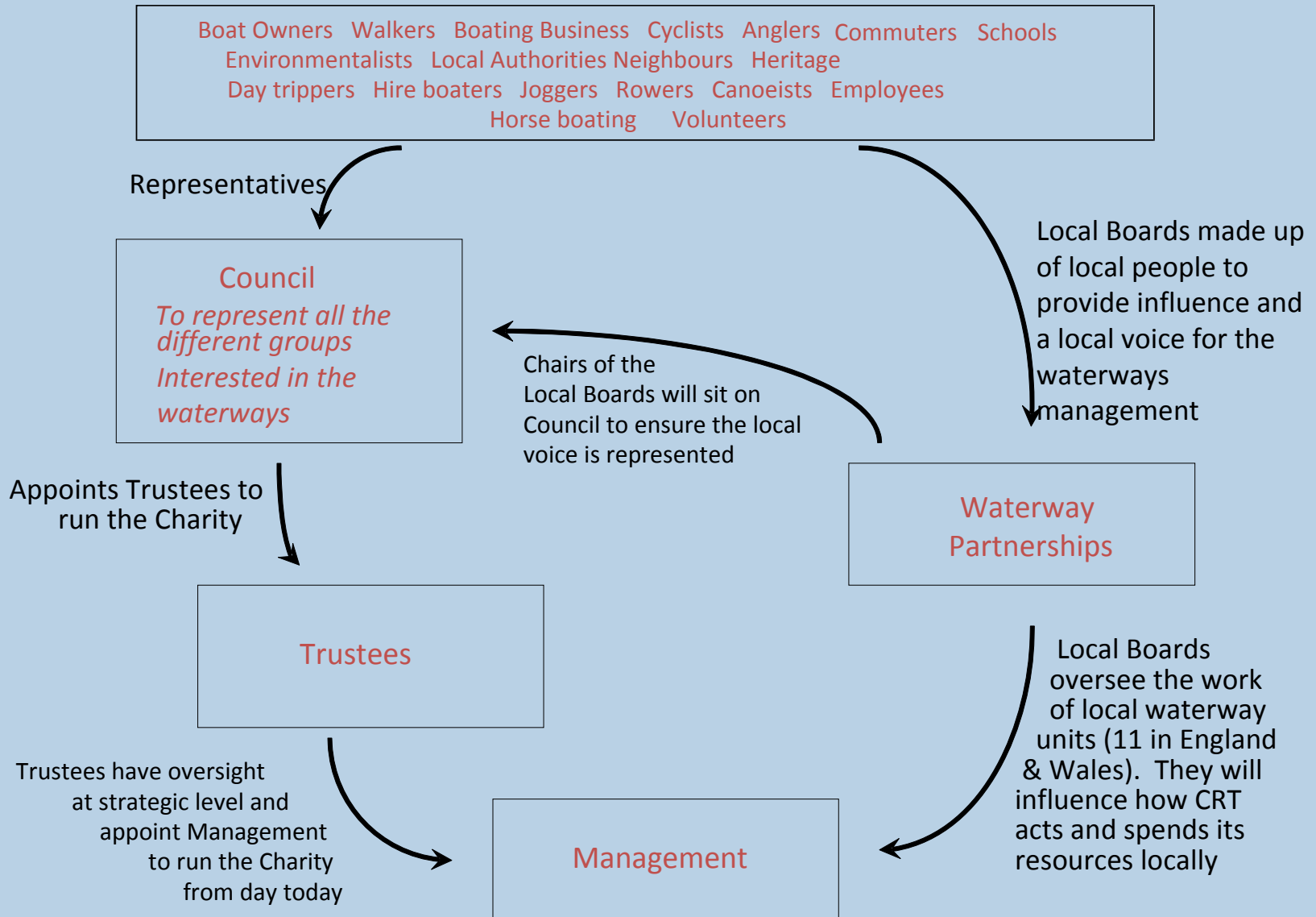




## SO WHY TRANSFER TO A CHARITY?

- Securing a sustainable future for the canal and river network
- Make it valued by more people as a national asset
- Ensure they become a valued part of the local community through which they pass
- Give freedom to increase funding and give greater opportunity







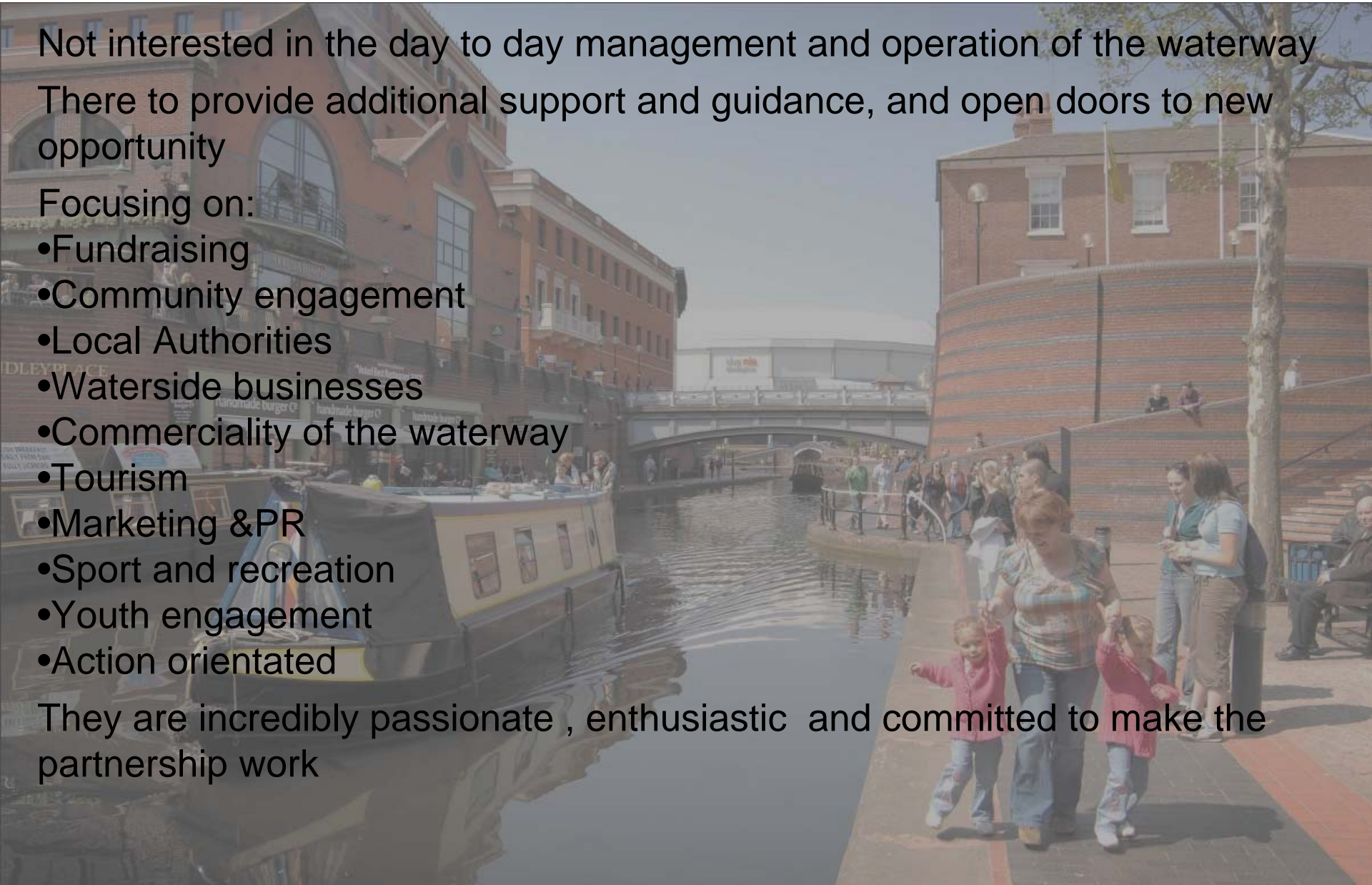
Not interested in the day to day management and operation of the waterway

There to provide additional support and guidance, and open doors to new opportunity

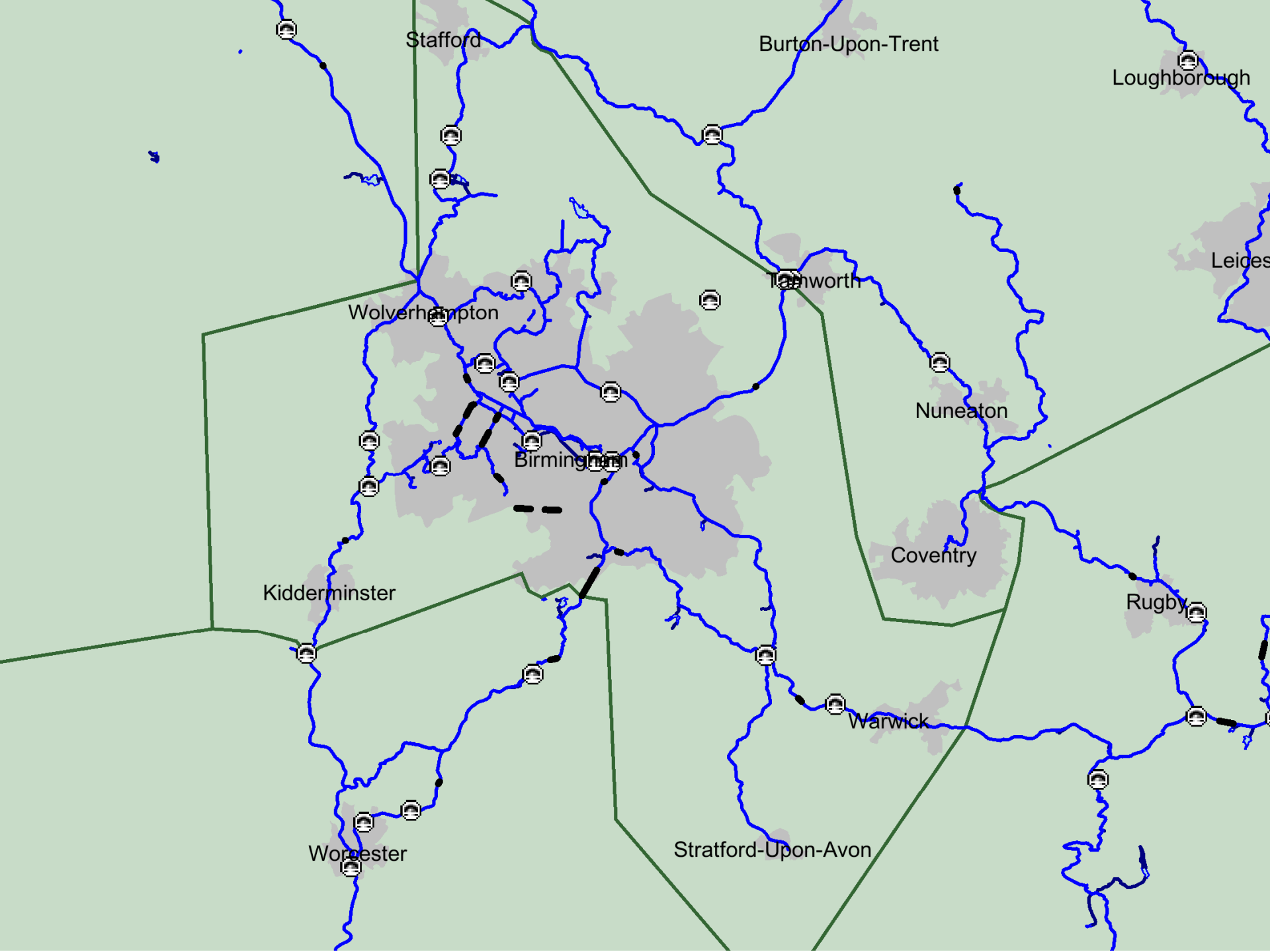
Focusing on:

- Fundraising
- Community engagement
- Local Authorities
- Waterside businesses
- Commerciality of the waterway
- Tourism
- Marketing & PR
- Sport and recreation
- Youth engagement
- Action orientated

They are incredibly passionate , enthusiastic and committed to make the partnership work









Budget for the year is £6.8M

•£2.5M Payroll

•£2.7M on Materials and Contracts

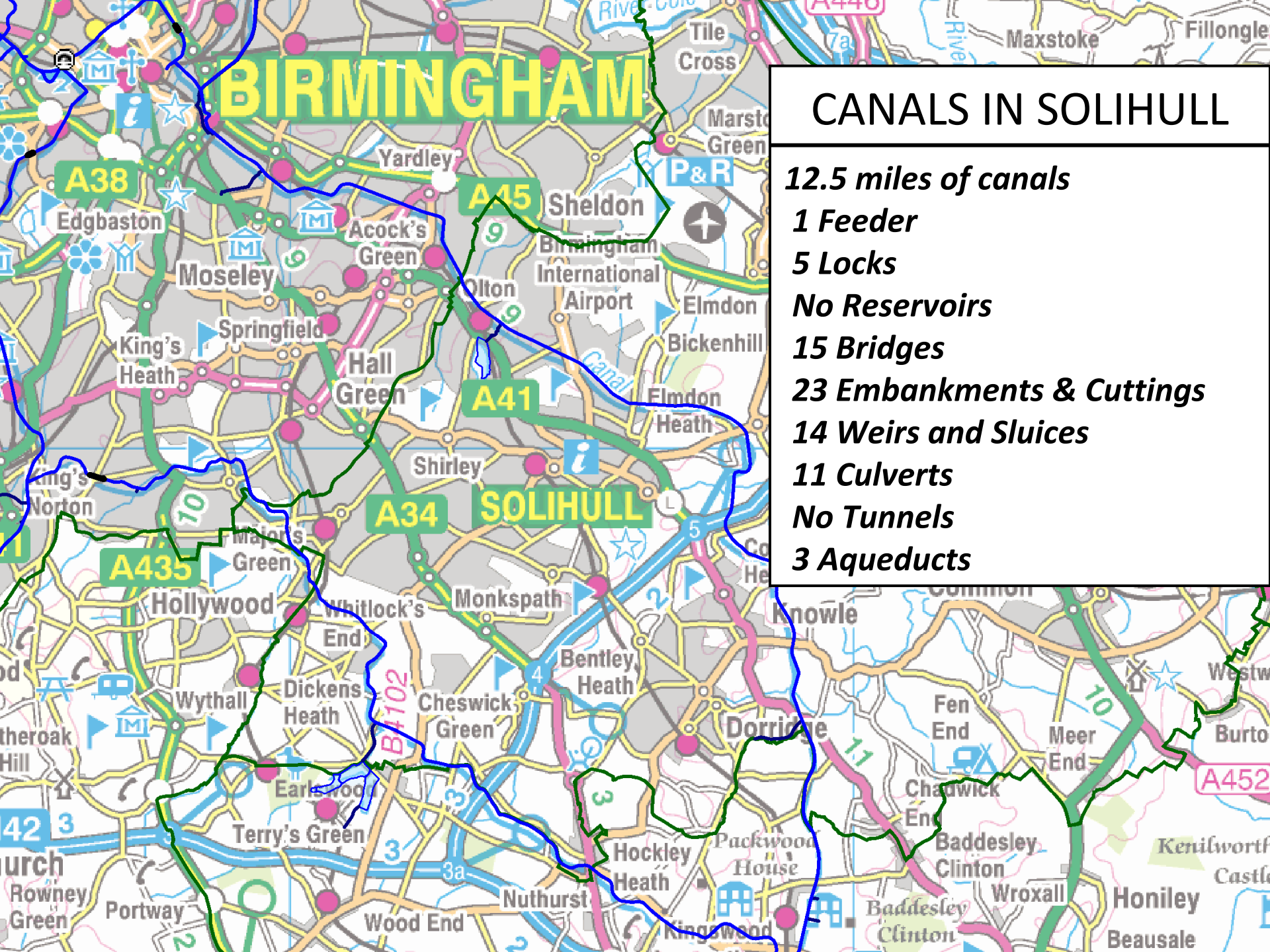
- Major/Minor Works £692k
- Customer Operations £130k
- Vegetation (Contracts) £1.4M
- Dredging £52k
- Mechanical & Electrical £153k
- Rapid Response £16k
- Inspections £74k
- Floating Plant £51k
- **Volunteers £142k**

•£600k on Plant & Machinery

•£1M on Fixed overheads to include Safety, Training, Premise/Office costs, commercial vehicles etc



# BIRMINGHAM



## CANALS IN SOLIHULL

- 12.5 miles of canals**
- 1 Feeder**
- 5 Locks**
- No Reservoirs**
- 15 Bridges**
- 23 Embankments & Cuttings**
- 14 Weirs and Sluices**
- 11 Culverts**
- No Tunnels**
- 3 Aqueducts**



- Resources – planned preventative maintenance (PPM), legal compliance and priority defects repairs take all assigned budgets – but the aesthetics which the public expect are not resourced
- Public Perception – the general view of the West Midlands' canals is negative and we need to try and correct this where possible.
- Community engagement – waterways not always valued, leading to increased litter & waste, graffiti and anti-social behaviour. We need to encourage people to understand and appreciate the canals more
- Regeneration has slowed – waterside sites are sitting empty and need redevelopment (including CRT sites)
- Water control – current resources rely on seasonal rainfall which in turn affects trade and tourism reliant on the canals.





We hope with the help of the Waterway Partnership we can –

- Understand how we can engage our communities
- Share knowledge and best practice that will allow us to get more from our current resources
- Introduce ourselves to new partners that help achieve greater efficiencies for us all
- Communicate more effectively with our customers, thus increasing the shared understanding of what is and can be delivered
- Develop and deliver a wider strategy for the waterway that will ensure it is valued by all





Canal &  
River Trust

## CONTACT US

0303 040 4040

[enquiries.westmidlands@canalrivertrust.org.uk](mailto:enquiries.westmidlands@canalrivertrust.org.uk)

[enquiries.westmidlandslwp@canalrivertrust.org.uk](mailto:enquiries.westmidlandslwp@canalrivertrust.org.uk)

Dean Davies

Tel 01827 252001 mobile 07885108308

[dean.davies@canalrivertrust.org.uk](mailto:dean.davies@canalrivertrust.org.uk)



Canal &  
River Trust

**ANY QUESTIONS?**