

**Draft Minutes of Rural Partnership Forum Meeting  
held on Tuesday 18<sup>th</sup> October 2011 at Hockley Heath Primary School**

**Attendees:**

Stephen Munday, Director of Public Health (Chairman)  
Sarah Barnes, Solihull Partnership  
Cllr Chris Burrows, Cheswick Green Parish Council  
Wendy Evans, Solihull Partnership  
Kath Hemmings, Neighbourhood Manager  
Jacqueline Jones, West Midlands Fire Service  
Martin Lambert, Vice-Chair, Dorridge & District Residents' Asscn and SALRUA  
Dr Gill Lewis, Hampton in Arden Parish Council  
Cllr Martin McCarthy, Blythe Ward  
Steve Palmer, W M Fire Service  
Keith Portman, W M Police  
Cllr Geoffrey Potts, Knowle Ward  
Glyn Price, Balsall Common Village Residents Assoc'n  
David Reed, Solihull MBC - Libraries  
Robert Shaw, SSAFA  
Neil Thomas, W M Police  
Derek Tilford, SSAFA & N'hood Watch  
Keith Tindall, Balsall Common Village Residents Assoc'n  
Jason Ward, Solihull MBC

**Apologies:**

Cllr David Bell, Meriden Ward  
Cllr Brian Burgess, Blythe Ward  
Cllr Ian Courts, Dorridge & Hockley Heath Ward  
Cllr Len Cresswell, Cheswick Residents' Asscn  
Dickens Heath Parish Council (*clash with Parish meeting*)  
Peter Ewin, Knowle Society  
Margaret Fulford, Mothers' Union  
Steven Hayes, CENTRO  
Cllr Diana Holl-Allen, Knowle Ward Councillor  
Cllr Ken Meeson, Dorridge & Hockley Heath Ward  
Chris Noble, Cheswick Green Parish Council  
Sarah Brooke-Taylor, Warwickshire Rural Comm'y Council  
Tidbury Green Parish Council  
Cllr Alan Rebeiro, Knowle Ward Councillor  
Schofield & Associates, Employment Lawyers  
Barbara Xifaras, Neighbourhood Watch

**1. Welcome and Introductions**

The Chairman, Stephen Munday, welcomed everyone to the meeting of this Forum and introductions were made around the table. Apologies received were noted and further apologies were offered by those in attendance.

**2. Notes of Meeting held on 28<sup>th</sup> June 2011**

The notes of the meeting held at Cheswick Green Parish Hall on 28<sup>th</sup> June were approved.

Matters Arising:

- **Update from Centro:** In the absence of Steven Hayes, Sarah Barnes was able to report:

Taxi Bus – In August a new 83 fixed journey service commenced on Tuesday and Thursday mornings between Meriden, Berkswell, Balsall Common, Eastcote, Barston and Solihull.

Centro exploring funding for a larger vehicle to operate fixed trips after Christmas.

In the near future, Centro to contact Parish Councils and Residents' Associations in Knowle, Dorridge, Hockley Heath and Balsall Common re the frequency of S2 and S3 services.

Station Car Parks - To help reduce pressure at stations car parks in rural areas (especially Hampton in Arden) Centro/Virgin Trains to offer discounts for season ticket holders who park at Birmingham International station. Problems also reduced by extensions to car parks at Tile Hill and Whitlocks End. Gill Lewis added that the situation in Hampton had worsened in the last two weeks, but it was not yet clear why.

Tidbury Green – Johnsons/Centro have arranged for S7 service to once again serve Lowbrook Lane from 24 October. This should address the issue identified at the last meeting about a difficult turn on the previous route that was a potential accident black spot.

- **Update on Community Transport**

At the last meeting it was suggested that school mini-buses could be used more fully. Sarah had investigated but without much success. Under the control of school governing bodies, schools in the area share mini-buses and pupil-use would be their first priority.

As there are no bus services after 6pm, or on Sundays, members felt that the use of any resource would be helpful.

Sarah felt that such use would not be impossible to pursue but may not be easy. She agreed to approach the secondary schools in the area and report back.

- **Community Safety**

Discussions at the last meeting had suggested that communication needed improvement and that better use could be made of existing Parish Council and Resident Group newsletters to get a key message out to all residents. Sarah reported that contact had been made with Parish Councils and other organisations to find out whether they publish newsletters and, if so, how often. The next stage is to find out publication dates/copy deadlines and this information will then be circulated to partners and forum members.

Gill Lewis asked if there was any possibility of funding being provided, if the inclusion of additional information involved increasing the number of pages in the newsletter. Sarah undertook to look at this.

Kath Hemmings, Rural Neighbourhood Manager, explained that a neighbourhood management update was circulated by email 10 times per year and included information from their partners on an ad-hoc basis. Others suggested the use of websites and the neighbourhood watch network to get information distributed.

Keith Portman reported that the local press would be publicising that Neighbourhood Watch would be using high visibility jackets, and have personal injury insurance etc..

The Chairman asked that these suggestions be picked up, along with outstanding actions from the last meeting, and an action list prepared.

continued ...

- **End of Year Review Proposals**

The last meeting had given consideration to (a) election of your own chair and vice chair; (b) these meetings be open to the public and publicised. The consensus at that meeting was that it was too early to be making these decisions and they should be re-visited after two more meetings.

Councillor Potts had left the meeting before that discussion had concluded, and he wished to register his disapproval of this decision. He felt that as the Partnership Forums are publicly funded, they should be open to members of the public, with an allotted time span given for public contributions or questions (as with Parish Council meetings).

Chris Burrows (Cheswick Green Parish Council) supported Cllr Potts' comments, and Cllr Potts volunteered to act as Chair to these meetings.

Stephen Munday suggested that these issues be revisited at the next meeting and a formal proposal be circulated in advance of the next meeting.

Sarah Barnes confirmed that the outstanding item for discussion ie. relationship between the Partnership, Solihull MBC and SUSTAIN would be included on the next agenda, when Dave Pinwell from SUSTAIN could be in attendance.

### **3. Hate Crime Reporting Centres** (presented by D I Neil Thomas, Head of Hate Crime Project, West Midlands Police)

Neil summarised the efforts of his team dealing with the issue of hate crime. His definition of this crime was '*any criminal offence that is perceived by the victim as being motivated by hatred*'.

To emphasise understanding of the issues, he circulated a quiz sheet which identified the myths and truths surrounding hate crime.

In response to the issues identified, especially of under-reporting, the partnership has now set up 21 Hate Crime Centres around the borough. These Centres are located in 12 children's centres, libraries, youth centres, Age UK, Solihull Enable, You Plus Centres, 3 CABs, Bromford Group and Solihull Community Housing. These will enable the public to report incidents away from the perceived formality of a police station. It is expected that such Centres will increase the opportunity to report, increase awareness (especially in schools dealing with bullying issues), and increase public confidence.

Responding to questions, D I Thomas explained:

- If an onlooker sees what is perceived to be a hate incident, it should be reported, as it helps to understand the pattern of incidents. Verbal abuse between neighbours could also be justified, as it is in schools. The police make judgements on an incident depending on the specifics of what has been reported.

- Although only 168 hate crimes reported last year, feedback meetings with support agencies across the West Midlands reported that such crimes were happening but were not being reported. In Solihull, monthly reviews of reporting figures are undertaken to assess the location of Centres.

- The location of centres have been advertised in 'Your Solihull' and the centres themselves can advertise, plus the police themselves use 'Twitter'.

- When asked what members of the Forum could do to help, it was suggested that 'word of mouth' would best promote this work.

As there are few reporting centres in rural areas, it was suggested that the police station at Balsall Common could become a centre and that Parish Council offices could be used. Any further suggestions should be made to Sarah Barnes and would be forwarded to the police team. The general feeling of the meeting was that the use of Centres for reporting was a great idea, but only if publicised adequately.

Finally, DI Thomas confirmed that training would be offered to anyone interested in setting-up a hate crime reporting centre.

#### **4. Action to Reduce Poverty Among Residents** (presented by Jason Ward, Solihull MBC)

Jason opened his presentation by reporting from research into poverty in the borough. He intended to clarify what Solihull was doing to alleviate poverty; seek your views and seek offers of help to promote the actions being taken.

The research had proved that poverty exists in all parts of Solihull; is often hidden; did not just affect children; and was inclusive eg. of health and housing issues.

Jason used a quiz sheet to clarify the actions being taken, and it was confirmed that in 2010:

- 15% of children in Solihull live in poverty;
- a household is considered to be in poverty if 10% of its household income is used on fuel;
- Council Tax Benefits are paid to 17,500 households (total of 86,000 households);
- Job Seekers Allowance is paid to 4,900 people, with an even split between North and South of borough.

Having discussed a real Case Study, the meeting considered the help available to those in need. Action taken in Solihull has been based on addressing multiple needs and ensuring that those needs are acted on, with the aim of a 'one conversation approach' rather than provision by several different services.

Jason then circulated a 'Money Counts' folder, which contained leaflets advertising the agencies and help provided in Solihull (information website: [www.solihull.gov.uk/moneycounts](http://www.solihull.gov.uk/moneycounts)). These packs are currently being distributed in the borough and contain advice on money management, skills for work, winter warmth, credit union, tacking loan sharks, and claiming free school meals (reducing stigma).

Following discussion, some members questioned their ability to identify people who may need assistance due to data protection. Although Jason would wish to extend outreach facilities, at present it was necessary to provide information via community outlets, rather than deal with individual queries. He acknowledged that the research had pinpointed certain areas of need and the Chairman asked if maps could be supplied. Jason directed councillors to needs assessments and to further information on his website. The contact for **further supplies of the folders/leaflets is via [aaps@solihull.gov.uk](mailto:aaps@solihull.gov.uk)**, and he encouraged everyone to distribute them, or inform community groups.

When asked about the use of Credit Unions, Jason reported that no research had been done but CUs were located in areas with the highest need. He accepted that we had the ability to help with financial issues but that people were often unaware of the help and advice provided. Questioning also highlighted the bad press given to the Council's new policy for charging the elderly for day centre attendance, and, the current registration/charging difficulties experienced by SSAFA regarding collection days. Sq Ldr Tilford added that a lot more information could be supplied by SUSTAIN.

In conclusion, on behalf of all those present, the Chairman expressed commitment to the distribution of Jason's material, acknowledging the importance of supporting vulnerable members of the community. Further information could be obtained from:

- helpline **0800 512012** for members of the public;
- winter warmth helpline **0121 704 8080**;
- website information on **[www.solihull.gov.uk/moneycounts](http://www.solihull.gov.uk/moneycounts)**.

Following the meeting, and responding to queries from members of SSAFA, it was confirmed that a new draft policy on charges for charitable collections in Solihull would be presented to the Cabinet for approval in due course, which it is hoped will clear up any issues relating to charges and the handing out of literature.

## **5. Agree Topics for Discussion at Next Meeting, and Close**

Gill Lewis asked why the intergenerational event was not being held this evening as planned, and Sarah confirmed that it was due to difficulty in finding a venue in the rural area that was accessible by public transport in the evening. Planning for such an event would continue once a suitable venue had been identified and on a date that would not clash with school examinations. The use of Arden Hall was suggested.

It was agreed that the next meeting be held on Thursday, 9<sup>th</sup> February 2012 (not 15<sup>th</sup> February as previously published) and would be the usual business meeting. Forum members suggested that discussions at the next meeting include:

- (i) the relationship between the Solihull Partnership, Solihull MBC and Solihull SUSTAIN;
- (ii) Chair and Vice-Chair for these Forum meetings;
- (iii) Government Grant / Budget;
- (iv) Health Service - changes to local services.

Requests for any further items to be added to the next agenda can be sent to Hannah Colson at [hcolson@solihull.gov.uk](mailto:hcolson@solihull.gov.uk).

Steven closed the meeting by thanking everyone for their attendance.

# Hate Crime Reporting Centres

Neil Thomas  
West Midlands Police

# Definitions

- ❑ Hate Crime: *“Any criminal offence that is perceived by the victim or any other person as being motivated by prejudice or hate”*
  
- ❑ Hate Incident: *“Any incident, which may or may not constitute a criminal offence, which is perceived by the victim or any other person, as being motivated by prejudice or hate”*

# Background to Project

- ❑ Implications of Hate Crime:
  - ❑ Victim
  - ❑ Victim's family.
  - ❑ Communities – impacts on community cohesion.
  
- ❑ Not just an issue for minorities but society as a whole.
  
- ❑ Main challenge - under reporting of incidents
  
- ❑ *Truths and Myths Quiz*



# Some reasons people don't report incidents...

- Social embarrassment
- Fear of being 'outed'.
- Not wanting family friends to know
- Fear that they will not be believed
- Fear that they will be judged
- Fear of being a repeat victim (e.g. reprisals)
- Fear of exacerbating the problem (especially if victim knows perpetrator).

# What is happening in Solihull?

- ❑ Challenging Hatred in our Communities project:
  - ❑ Increase **confidence** to report incidents through engagement with communities
  - ❑ **Awareness** raising – especially in schools
  - ❑ Provide more **opportunities to report** incidents through ‘Third Party’ reporting centres and raise the confidence of victims to seek help

# Reporting Centres

- ❑ Pilot project – 12 months
- ❑ Face to face reporting
- ❑ 21 centres established so far
- ❑ Role – to provide initial support and advice to victims, which might include giving information about referral options.
- ❑ Victim Support – independent role to support centres, monitor responses, track cases and ensure victims receive appropriate after care.

# Reporting Centres

- Children's centres (x12)
- Age UK, Solihull
- Solihull Enable
- You Plus Centre
- Citizen's Advice Bureaux (x3)
- Youth Services
- Solihull Community Housing
- Bromford Group

# Rural Partnership Forum

Action against Poverty

18<sup>th</sup> October 2011, Hockley Heath Primary  
School

Jason Ward



**MONEY COUNTS**

[www.solihull.gov.uk/moneycounts](http://www.solihull.gov.uk/moneycounts)

# Understanding Poverty

## ❑ What is poverty and low income

- ❑ Most common definition is living in a household where the income is 60% or less of the middle income (before housing costs).
- ❑ It is about struggling to meet the basic needs such as food, heating, transport, clothing and education costs.
- ❑ How do we know about poverty in the borough

# Understanding Poverty

## Why do people fall into poverty?

- What leads to people in poverty
- What can happen to people in poverty

There are some cautions:

- Every situation of poverty can be brought about by different circumstances
- Poverty can be hidden

# Understanding Poverty

## Who is affected?

- Children
- Older people
- People in and out of work
- Young people leaving care
- People who rent their home and those who own their home
- Rough sleepers
- Greater in some areas than others



# The Reality

## Case Study – Ms X's Experience

- A professional woman
- Experiencing poverty through a change in circumstances
- The consequences

# Action against Poverty - Quiz

- ❑ What percentage of Solihull's 45,000 children live in households considered to be in poverty?  
a) 5%      b) 10%      c) 15%      d) 20%
- ❑ What's the weekly level of income for a family with 2 adults and 2 children living in poverty?  
a) 450      b) 250      c) 375
- ❑ A household is said to be in fuel poverty if it spends more than...% of its income on maintaining a satisfactory heating regime?  
a) 3%      b) 8%      c) 10%

# Action against Poverty - Quiz

How many of the 86,000 households in Solihull claim Council Tax Benefit?

a) 10,600    b) 15,800    c) 17,500

How many people in Solihull are in receipt of job seekers allowance?

a) 2,900    b) 3,900    c) 4,900

# Summary of our key actions

- Money Counts advice points
- Skills for work
- Winter Warmth & Linking People
- Promotion of the credit union
- Tackling Loan Sharks
- Claiming free school meals

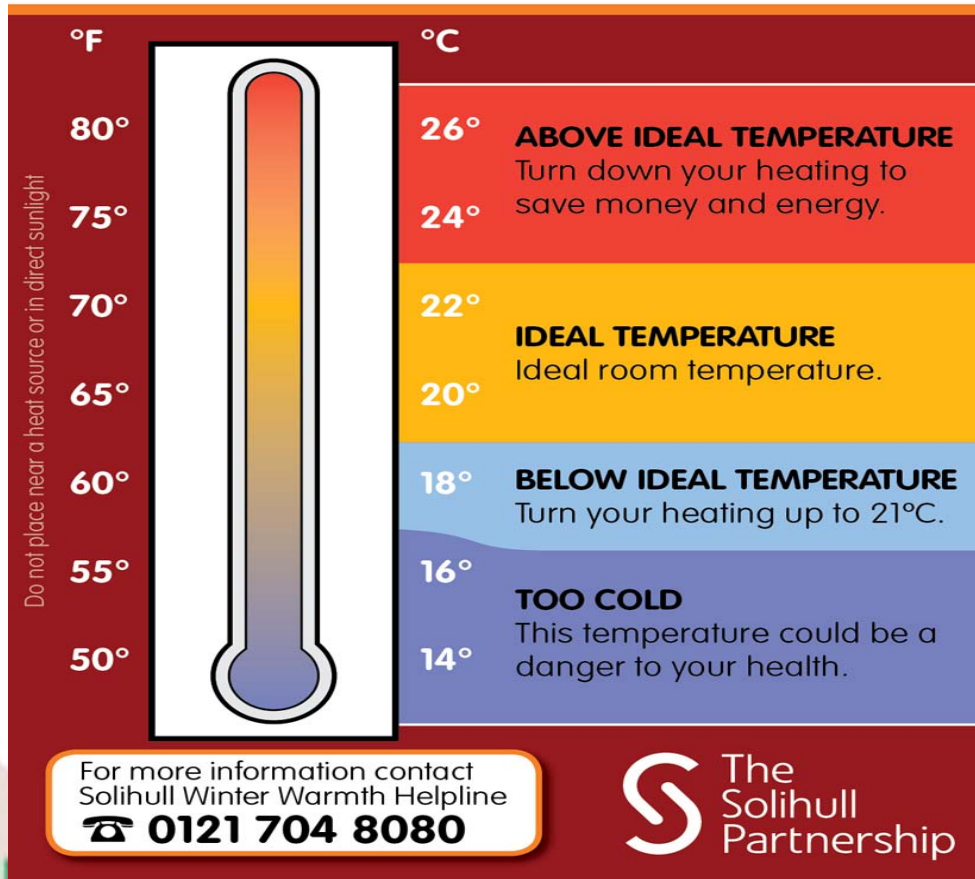
All this information is included in our pack

# Winter Warmth Campaign



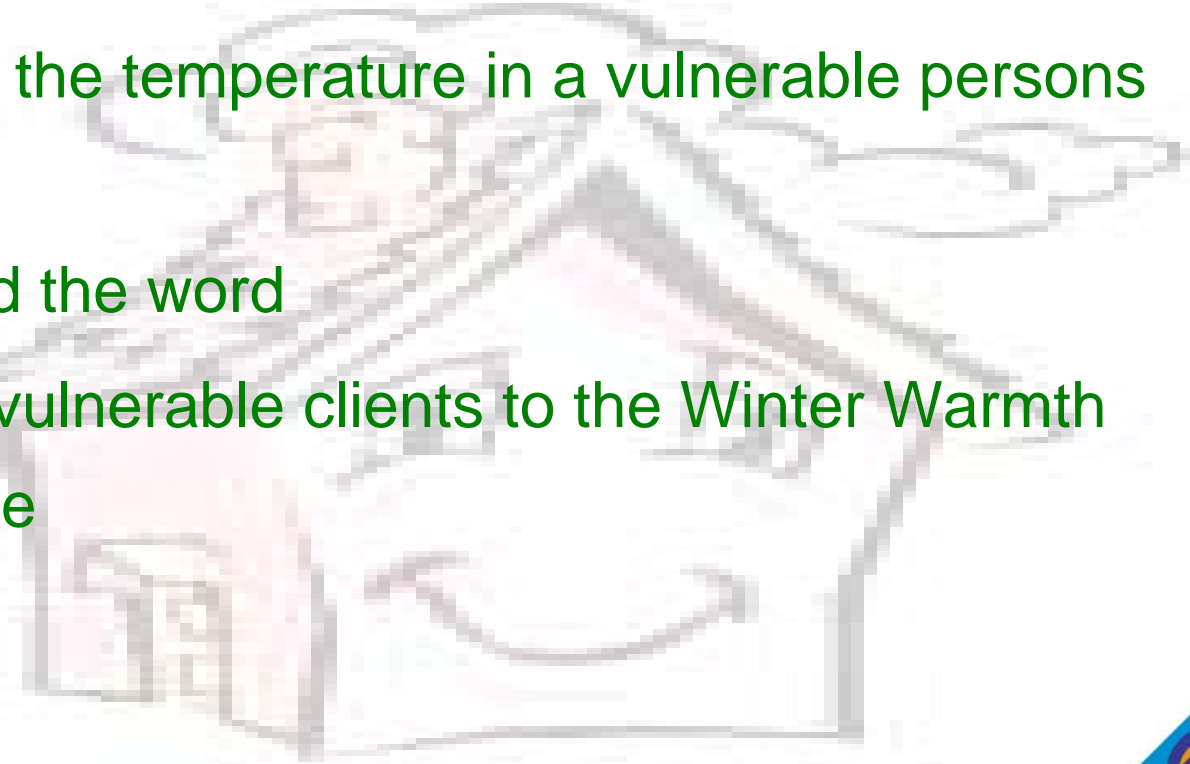
## Winter Warmth

Keeping Solihull Warm



# What you can do

- Give out the temperature cards
- Check the temperature in a vulnerable persons home
- Spread the word
- Refer vulnerable clients to the Winter Warmth helpline



# The Credit Union

- ❑ Helping low income households save and access affordable credit
- ❑ Increasing collection points
- ❑ Promote as an alternative to payday loans or loan sharks
- ❑ The Credit Union is a good proposition for all

# Useful Contacts

- ❑ Energy Saving Trust Advice Centre
- ❑ **FREEPHONE 0800 512012**
- ❑ Winter Warmth Helpline 704 8080
- ❑ Robin Dunlevy- 0121 704 6450





# Action against Poverty

- ❑ For more information; [aaps@solihull.gov.uk](mailto:aaps@solihull.gov.uk)
- ❑ [www.solihull.gov.uk/moneycounts](http://www.solihull.gov.uk/moneycounts)
- ❑ See our top ten tips leaflet for useful contacts

# Action against Poverty

- Which actions are most important to your area?
- What do you feel you could do as a group to help tackle local poverty?

**Draft Minutes of Rural Partnership Forum Meeting  
held on Tuesday 28<sup>th</sup> June 2011**

**Attendees:**

Sarah Barnes, Solihull Partnership  
Phil Brandum, Dickens Heath Parish Council  
George Burdett, Cheswick Green Residents Association  
Chris Burrows, Cheswick Green Parish Council  
Hannah Colson, Solihull Partnership (notes)  
Councillor Courts, Dorridge & Hockley Heath Ward Councillor  
Mr & Mrs Fearn, representing Tidbury Green Parish Council  
Councillor Hawkins, Blythe Ward Councillor  
Steve Hayes, CENTRO  
Mr & Mrs Hodges, representing Tidbury Green Parish Council  
Councillor Mrs Holl-Allen, Knowle Ward Councillor & Cabinet Member for Community Safety  
John Hornby, representing Solihull Partnership Governing Board  
Rav Jagdev, Solihull Partnership (photos)  
Jacqueline Jones, West Midlands Fire Service  
Jodie Lee, Solihull MBC  
Dr Gill Lewis, Hampton in Arden Parish Council  
Philip Lloyd-Williams, Solihull MBC  
Melanie Lockey, Solihull Partnership (Chair)  
Mike Lynn, Barston Parish Council  
Gillian Magee, Solihull MBC  
Phil Mayhew, Solihull MBC  
Stephen Munday, Director of Public Health  
Dave Pinwell, representing Solihull Partnership Governing Board and SUSTAIN  
Keith Portman, West Midlands Police  
Councillor Potts, Knowle Ward  
Glyn Price, Balsall Common Village Residents Association  
Councillor Peter Rayson, Hockley Heath Parish Council  
Paul Tovey, Solihull MBC  
Jim Wallace, West Midlands Police  
Marie Zizzi, Cheswick Green Parish Council

**Apologies:**

Councillor Bell, Meriden Ward  
Len Cresswell, Cheswick Green Parish Council  
Peter Ewin, Knowle Society  
Margaret Fulford, Mothers Union  
Kath Hemmings, Neighbourhood Manager  
Linda McCormick, Friends of Dorridge Park  
Kenneth Meeson, Berkswell Parish Council  
Councillor Meeson, Dorridge & Hockley Heath Ward Councillor  
Chris Noble, Cheswick Green Parish Council  
Councillor Rebeiro, Knowle Ward Councillor  
Schofield & Associates, Employment Lawyers  
Rosie Weaver, Meriden Parish Council

**1. Welcome and Introductions**

Melanie Lockey welcomed everyone to the meeting of this Forum and introductions were made around the table. Apologies were also noted.

## 2. Notes of Meeting held on 23<sup>rd</sup> February

The notes of the meeting held on 23<sup>rd</sup> February 2011 at Arden School were approved.

## 3. Transport

Update from Centro: Steven updated the group on the key findings to come out of the Centro survey on travel needs in the area which took place December 2010. The survey results illustrated that the rural areas have high car ownership; however there are exceptions to this with the younger and older generations being key users of public transport. Results from the survey suggested:

- There was a desire for more frequent and faster services from rural areas into Solihull town centre; in particular there was a desire identified for a faster and fixed service between Solihull and Balsall Common.
- The taxi-bus service (available to everyone in the Heart of England area, which includes Meriden, Hampton, Balsall Common and Berkswell) which provides a door-to-door demand responsive local bus service is being under utilised. Centro are trying to encourage wider users, particularly younger people and community groups to take advantage of the service. All West Midlands concessionary passes, Centrocards and Busmaster tickets are accepted and the fares charged on the service are calculated on a mileage basis and advised to the passenger when a booking is made. The taxi-bus currently operates from 8.00am-7.30pm Monday to Saturday, but Centro are looking at extending the operating hours in the hope this will encourage wider users, particularly the younger age category to use it. The telephone number to ring in order to register or make a booking for the taxi bus is: 0121 782 9322 (9am-4pm, Monday to Friday), currently bookings must be made a day before travel.
- There are problems with car parks at rural train stations regularly being full due to commuters; Steven advised the group that Centro are exploring opportunities to use the taxi-bus for providing some fixed trips for commuters to local railway stations (Berkswell and /or Hampton).
- There is demand for a fixed taxi-bus route: so from August 2011 Centro will be providing a fixed taxi-bus service between Meriden, Berkswell, Balsall Common, Barston, Eastcote, Catherine De Barnes and Solihull which will run twice a week; the service will be reviewed and expanded if successful.

Steven also notified the group there is a possibility of some private funding available to help provide additional bus services for Knowle & Dorridge, discussions are in their early stages and Centro will be consulting with local Resident Association's and Parish Councils before any decisions are made.

Residents from Tidbury Green raised concerns with Steven regarding changes to a local bus service which now means the bus has to undertake a difficult turn creating a traffic accident black spot. It was agreed this issue would be picked up outside of the meeting. Finally, Steven acknowledged to the group that there has been lack of engagement with local residents in the past regarding changes to public transport; however Centro's structure has now changed and there are 'Area Teams' in place to attending meetings such as this and local transport user forums, to keep locals informed on changes. Dave Pinwell noted on behalf of the Community and Voluntary sector that an improvement in communication from Centro would be welcomed as they have received lots of complaints

over the last couple of years that changes to local transport have not been publicised enough in advance.

Steven agreed to send flyer details on the taxi-bus to local Resident Associations and Parish Councils so they can publicise this service in their newsletters / noticeboards.

Feedback from 'Driving Change in Transport through the Voluntary and Community Sector event: Sarah provided the group with a brief overview of the key opportunities around establishing community based transport following her attendance at a conference which took place on 9<sup>th</sup> March. Sarah encouraged people to visit the following weblink (<http://www.rawm.org.uk/sites/default/files/documents/RAWM%20Transport%20Evidence%20Review%20FINAL%20MAR2011.pdf>) which takes you directly to a report on how the voluntary sector can contribute to meeting local transport needs.

The group then discussed various schemes that are being used elsewhere to address community based transport in rural areas. Some of the group were keen to look into using school minibuses as it was felt that they there are under-utilised particularly in evenings and school holidays, when there is a need for transport for young people. It was suggested that Solihull MBC was the appropriate body to have oversight of which schools etc have minibuses.

The general agreement from the group regarding the 'volunteer coordinated car schemes' was that insurance would be too much of an issue.

Sarah agreed to look into the use of school mini-buses and report back at the next meeting and; Steven agreed to send Sarah details of the Community Transport person from Centro.

Dave Pinwell also promoted the use of Solihull Community Transport which operates a borough wide transport service using minibuses, 7 days a week. The transport is available to all voluntary, Charity and non-for profit organisations across the borough either with a paid driver or with their own volunteer driver. They also provides Minibus Driver Awareness Training and Passenger Assistance Training. For further information on this, telephone: 0121 788 4525 or visit the following weblink: <http://www.solihull.gov.uk/health/communitytransporttravel.htm>.

#### **4. Community Safety** (presented by Stephen Munday, Director of Public Health)

Stephen Munday gave a presentation on the main findings from Solihull's Community Safety Partnership's assessment of crime, anti-social behaviour and road safety in Solihull and in particular highlighted the findings for this particular geographical area.

It was noted that:

- Burglary from Other Buildings (e.g. sheds / garages / barns) was above the Solihull average in this area; Hampton-in-Arden area has the highest number of burglaries from Other Buildings.
- Tidbury Green Parish appears vulnerable to all types of burglary and theft of motor vehicle.
- Anti Social Behaviour (ASB) and criminal damage are both lower than the Solihull average in these areas.
- The overall crime rate in Meriden Village is relatively high compared to other rural areas, but it is still lower than the average crime rate for Solihull as a whole.
- Burglary and Vehicle crime are subject to local area fluctuations with bursts of activity followed by gaps where the problem has moved on elsewhere or where a prolific offender has been taken out of circulation.

- There has been a 12% reduction in the number of collisions on rural roads from 2005-07 to 2008-10. In the period 2008-10 there were 5 fewer fatalities and 39 less casualties in the rural area compared to the previous 3 year period.

Following the presentation there was a short chance for the group to reflect on the information that had been shown to see whether it felt right for this area before the group broke into separate groups. Comments from the wider group included:

- Residents commented that community perception of ASB has increased even though actual rate of ASB has gone down. Keith Portman notified the group that the Police now take residents out to ASB hotspot areas and they have found this an effective method in dealing with people's perception of what is and isn't ASB.
- It was noted the rural areas are challenging to tackle crime due to the access links. Keith explained that the neighbourhood teams are working closely with the motorway police. He also explained a recurring theme which needs to be tackled in these areas is local people leaving cars unlocked.
- Councillor Mrs Holl-Allen explained to the group that since 1<sup>st</sup> June 2011 new 'Community Action Priority Teams' have been set up by the Police, who will work in support of neighbourhood policing teams and will service scheduled appointments with members of the public to address their concerns.

Common themes to come out of the two group discussions were:

- Low level ASB and petty crime (e.g. dog waste bins set fire to) goes on within the rural communities and often doesn't get reported to the police. A suggestion put forward was the need for an interim measure between local residents and the police for people to report petty crimes to e.g. a local resident reports a petty crime to their residents association and they pass intelligence onto the police.
- There is a need to encourage road users to stick to main roads and motorways as there is a problem with HGV (Heavy Goods Vehicles) and high volumes of cars on the rural roads which aren't designed for lots of traffic.
- Communicating to rural communities needs to be improved, several suggestions were provided including:
  - The role of Neighbourhood Watch to be more joined up to ensure local residents and councillors know what is going on in their areas (this could be done through neighbourhood watch website). Councillors are not always aware of who the Neighbourhood Watch Coordinator is in their own areas.
  - Put together a directory of parish council and resident association publishing dates for newsletters, which can then be circulated amongst the forum distribution list and partner organisations.
  - Use local buses to advertise local events, messages for local people etc.
  - Use local school newsletters to get messages out to the community
  - Provide key contacts, such as Councillors and Neighbourhood Watch Coordinators with information about crime in their local areas so that the messages can be filtered out to residents to be vigilant (Police raised issues with data protection which would need to be sorted).

## 5. Partnership Forums: Review and Development

Sarah briefly ran through the report which was circulated with the papers before the meeting, on the End of Year 1 Review, highlighting the two proposals for the group to consider:

1. Electing your own chair and vice chair
2. Make the meetings open to the public and publicise them

The general consensus from the group was that it was too early to be making decisions about nominating their own chair and vice chair. It was agreed to re-visit this after two more meetings.

Concerns were raised regarding opening the meetings to the public as it was feared the meetings would become a series of single issues affecting a particular area. A suggestion put forward was that every invitee was able to bring someone with them.

It was agreed engagement with local schools, businesses and churches needed to be looked at before the next meeting to try and encourage them to attend the meetings.

## 6. Agree topics for discussion at next meeting

Melanie closed the meeting thanking everyone for their attendance. The next meeting is being held on Tuesday 18<sup>th</sup> October, venue is still to be confirmed. Glyn Price requested an item on the relationship between the Solihull Partnership, Solihull MBC and Solihull SUSTAIN at the next meeting. Requests for any further items to be added to the next agenda can be sent to Hannah Colson ([hcolson@solihull.gov.uk](mailto:hcolson@solihull.gov.uk)).

Sarah advised the group that there is a public consultation out on 6<sup>th</sup> July on: 'Gypsy and Traveller Site Allocations Development Plan Document (DPD)'. Please contact Forward Planning on 0121 704 6428, [sustainabledevelopment@solihull.gov.uk](mailto:sustainabledevelopment@solihull.gov.uk) or [www.solihull.gov.uk/ldf](http://www.solihull.gov.uk/ldf) for further information.

Sarah also asked for ideas on where the next rural partnership forum can be held; suggestions put forward were, Dickens Heath Village Hall, Tidbury Green School, Hampton Hall and Balsall Reading Room.

Finally, Councillor Hawkins advised the group that along with Coventry and Warwickshire, Solihull want to bid for government funding to bring fast high-speed broadband to businesses and residents across Solihull. For further information on the bid or to fill in the online survey please click on the following web link: <http://www.solihull.gov.uk/consultation/>

### Actions:

Action	By Whom
1. Tidbury Green public transport issues to be discussed directly with CENTRO	Tidbury Green Residents / Steven Hayes
2. Details on the taxi-bus to be sent to local Resident Associations & Parish Councils	Steven Hayes
3. Look into the use of school mini-buses for community transport and report back at next meeting	Sarah Barnes
4. Details of the Community Transport Lead for Solihull to be sent to Sarah	Steven Hayes
5. Engagement with local schools, businesses and churches to be looked at before the next meeting.	Sarah Barnes

## Rural Partnership Forum

Tuesday 28<sup>th</sup> June 2011

### Feedback from “Driving Change in Transport through the Voluntary and Community Sector” Event

I attended this event which was held at Coventry Transport Museum on 9<sup>th</sup> March. The purpose of this event was to show the contribution that community and voluntary sector organisations can make to meeting local transport needs.

The event was used to launch a report about the contribution that the voluntary sector can make to meeting local transport needs. This can be found at:  
<http://www.rawm.org.uk/sites/default/files/documents/RAWM%20Transport%20Evidence%20Review%20FINAL%20MAR2011.pdf>

Voluntary and community organisations can make a valuable contribution to meeting local transport needs because they are local, well motivated, can do things cost effectively and can be innovative in the way that they do things.

I met a number of people at the event who are involved in community based transport in rural areas. It was clear that there are opportunities to meet local transport needs by making better use of resources that are already out there such as minibuses owned by schools and community organisations. Some of things that people are doing elsewhere include:

- **Volunteer coordinated car schemes** (e.g. in Shropshire and Warwickshire) where volunteer drivers transport someone using their own car and are paid mileage.
- **Pooling minibuses and drivers** (e.g. where schools and community organisations that own their own minibus agree to pool these and make them available for others in the area to use for a modest charge). Everyone gains from this - organisations who haven't got their own minibus get access to one, those who have get some income and a community asset is more fully utilised.

There are some practical issues that need to be considered in setting up any community based scheme (e.g. funding and insurance) but these aren't insurmountable and there is support out there. The Community Transport Association (ctauk.org) was recommended as a really useful source of information and advice and I also met someone who has set up various community based schemes in Shropshire who would be happy to give us some advice and support.

Many community transport schemes are struggling for funding and often these schemes, particularly in rural areas, don't deliver the volume of outputs needed to attract funding. There is, however, still funding about if people are creative and many schemes can be started quite modestly without the need for much funding.

You are asked to think about how you could work together to establish some community based transport that would better meet local transport needs in the rural areas.

Sarah Barnes, 15/6/11



# Rural Area Partnership Forum

Community Safety, 28<sup>th</sup> June 2011

Cheswick Green Village Hall

Stephen Munday, Director of Public Health

Prepared by

Solihull Observatory

# The Community Safety Partnership

- ❑ Safer Solihull Partnership – Fire, Police, NHS, Council, Probation and Police Authority
- ❑ What we do
  - ❑ Listen to our communities
  - ❑ Assess need and plan resources
  - ❑ Target Efforts on Priorities of Most Concern
- ❑ Tightening of Resources

# 2010 Progress on Priorities – Solihull wide

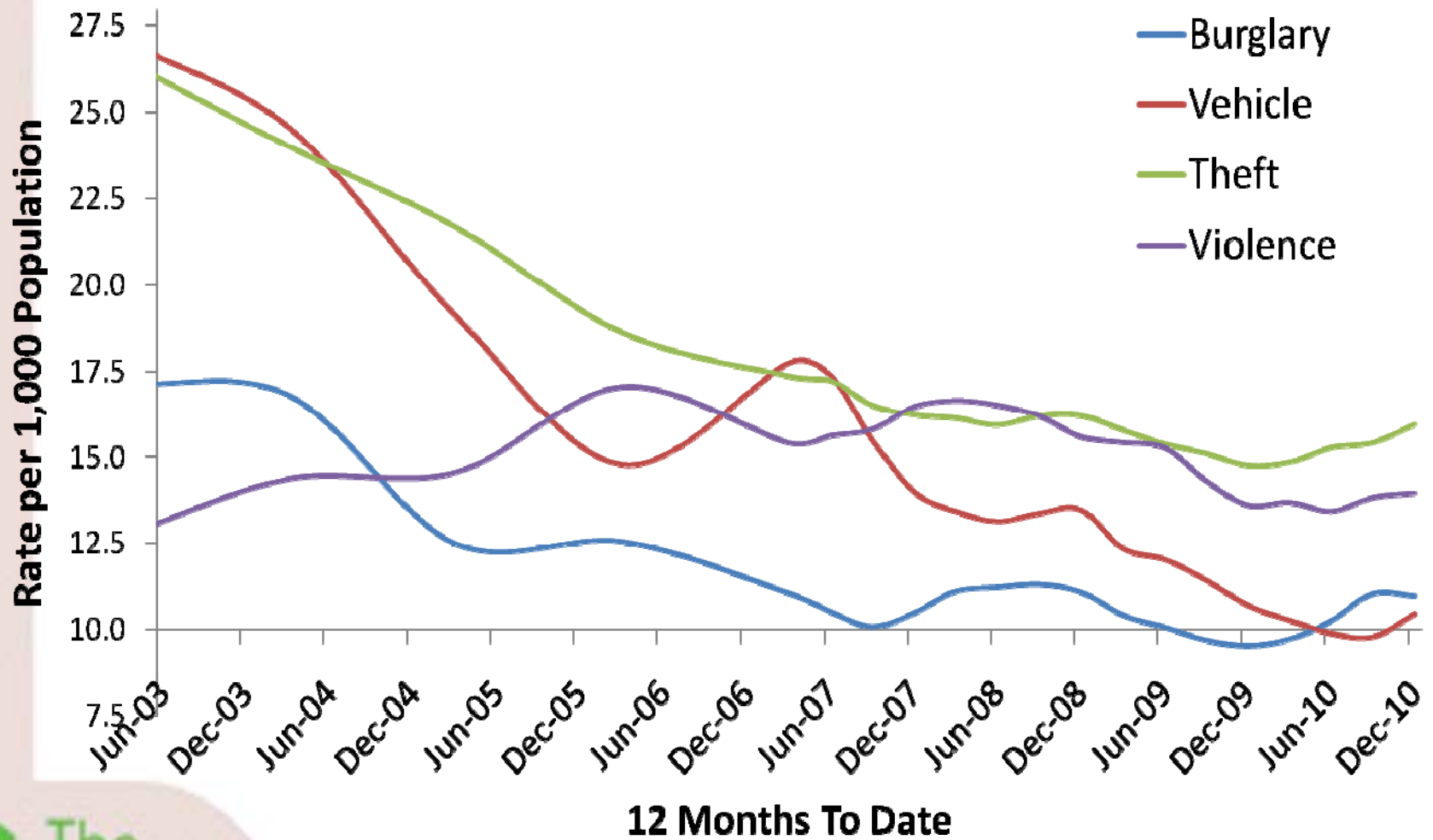
## ❑ Some achievements:

- ❑ 15% Reduction in Robbery, Burglary and Vehicle crime
- ❑ 6.5% Reduction in Serious Violent Crime
- ❑ Reduction in Arson and Anti Social Behaviour (ASB) - related incidents
- ❑ Reduction in Killed & Seriously Injured on Roads
- ❑ More drug users in effective treatment

## ❑ Service Improvements:

- ❑ Improved Alcohol Services
- ❑ Services for victims and families of domestic abuse
- ❑ Improved joined up response to dealing with offenders
- ❑ Better response to dealing with ASB

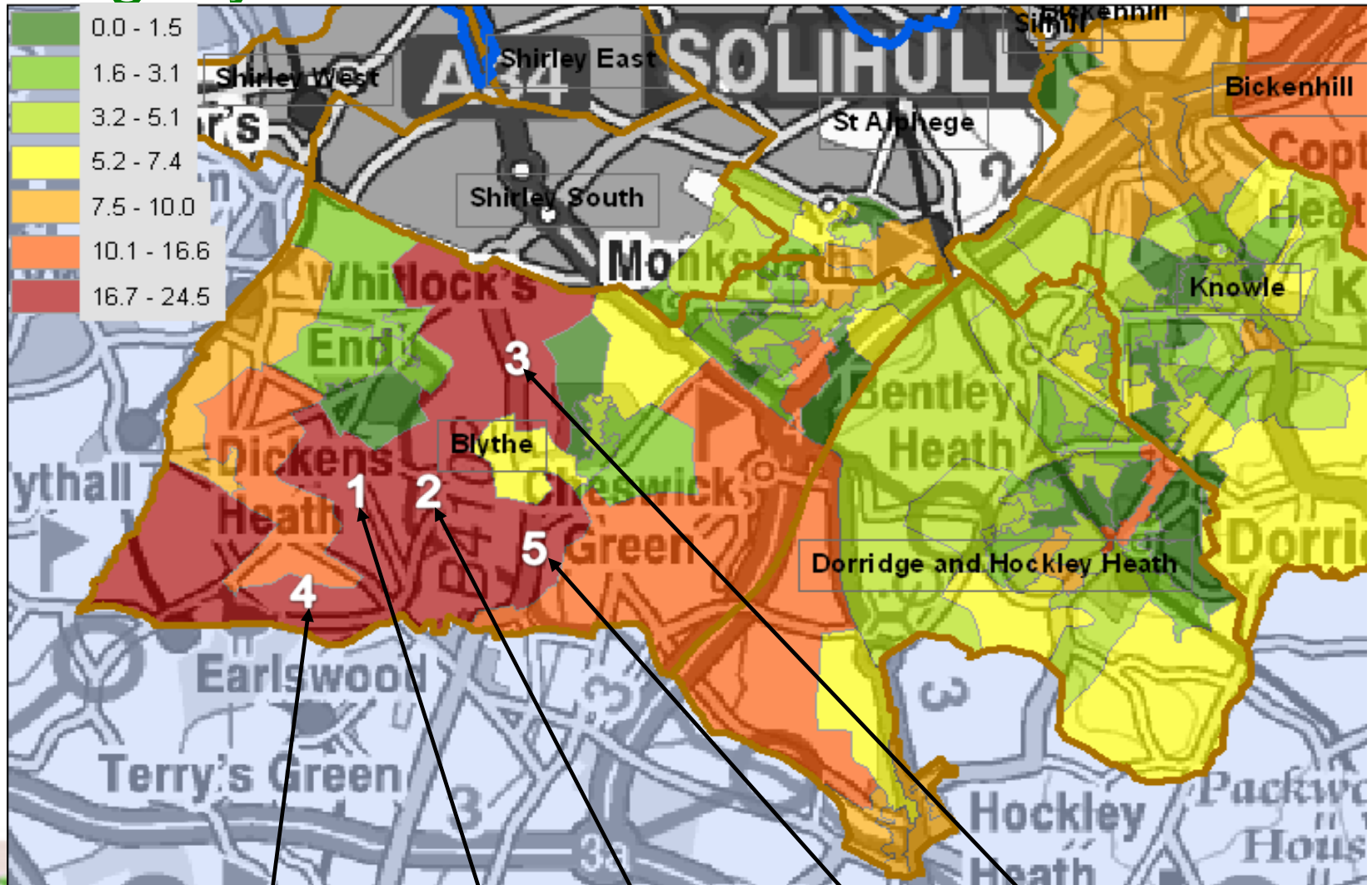
# What some of our data tells us



# Rural Area Headlines

- ❑ Only **Burglary Other Buildings** above Solihull ave.
  - ❑ Hampton-in-Arden area 29.7 per 1,000 households (**Barston** 5<sup>th</sup> highest Output Area)
- ❑ **Tidbury Green parish** appears vulnerable to Burglary (all types) and Theft of Motor Vehicle
- ❑ ASB and Criminal Damage are lower than Solihull average.
- ❑ Meriden village – overall crime rare relatively high by rural area but still lower than Solihull average.
- ❑ There has been a 12% reduction in the number of collisions on Rural roads from 2005-07 to 2008-10

# Burglary & Vehicle Crime



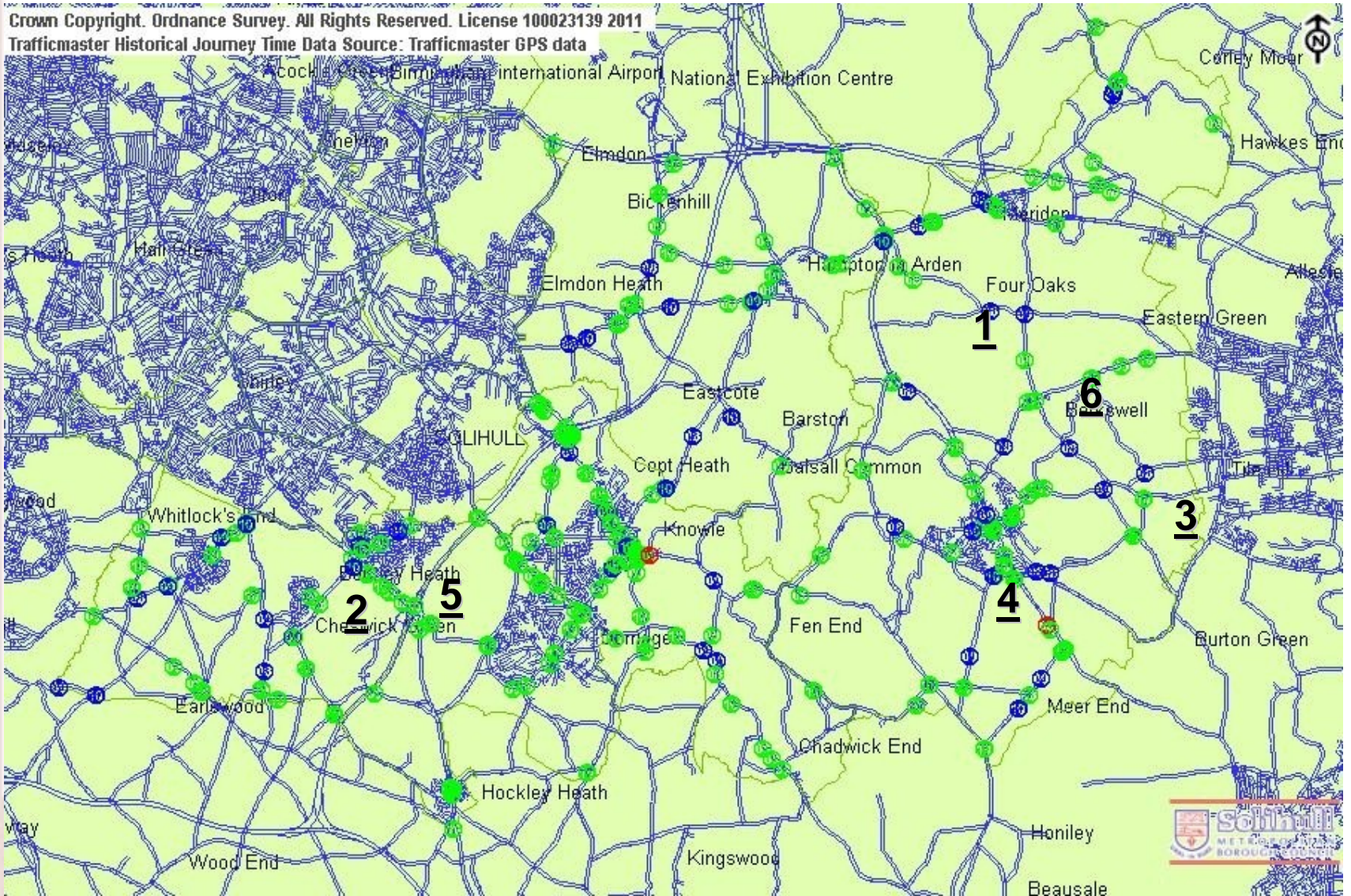
- Wood Lane
- Cleobury Lane
- Lady Lane
- Salter Street
- Tanworth Lane

# Road Safety

- ❑ In the period 2008 to 2010, there were 5 fewer fatalities and 39 less casualties in the rural Area compared to previous 3 year period.
- ❑ 64% of casualties were drivers, 27% were passengers and 9% pedestrians.
- ❑ 75% of accidents took place in daylight and 62% occurred in dry conditions
- ❑ These trends are consistent over time.

# Road Safety

Crown Copyright. Ordnance Survey. All Rights Reserved. License 100023139 2011  
Trafficmaster Historical Journey Time Data Source: Trafficmaster GPS data





# Discussion

- 1) Is that what it feels like in this area?
- 2) What do we do about it together?

## Rural Partnership Forum

Tuesday 28<sup>th</sup> June 2011

### Partnership Forums – End of Year 1 Review

#### 1. Purpose

- 1.1 To review what the Rural Partnership Forum has done in its first year and discuss how you want the forum to develop in future.

#### 2. Background

- 2.1 On 22<sup>nd</sup> April 2010 the Governing Board of the Solihull Partnership decided to establish 4 local Partnership Forums, one covering north Solihull, one covering the rural south and east of the Borough, one covering Shirley and St Alphege and one covering Lyndon, Elmdon, Olton and Silhill.
- 2.2 The purpose of the Partnership Forums is to communicate and consult about the work of the Solihull Partnership with a variety of local stakeholders – elected Members, Parish Councils, residents groups, business and faith group representatives. The intention is that the dialogue taking place through Partnership Forums will inform the Partnership's priorities and help to ensure that we are working together effectively to achieve these priorities.
- 2.3 Now that the forums have reached the end of their first year of operation, it is a good time to look at whether the forums are achieving their aims and how they should develop going forward.

#### 3. Review of First Year

- 3.1 Tonight's meeting is the 4<sup>th</sup> meeting of this forum and you have met three times previously:
  - The first meeting (July 2010) was mainly about identifying local issues.
  - The second meeting (November 2010) focused on Solihull's draft Care Strategy and what that might mean in terms of housing, jobs etc.
  - The third meeting (February 2011) looked at the local implications of an ageing population and items about the 2011 Census and internet security.
- 3.2 A list of issues that you have identified and the action taken is attached.
- 3.3 The majority of those who participated in the Partnership Forums appear to have found them useful. Some of the comments made by people who have been to forum meetings have included:

“The forum will provide opportunity to voice issues which concern the residents I represent and it opens opportunities to pursue many issues which otherwise would be difficult as just one agency”

“Very informative, not a talk shop which it could easily have been. A positive and good meeting.”

“I am pleasantly surprised! I learnt a great deal”.
- 3.4 From the feedback, participants appear to have found the November meeting (the draft Core Strategy of the Local Development Framework) the most useful and the February meeting (ageing population plus general interest items) the least useful. We learnt a lesson from the February meeting about ensuring that we do not have too many general items on any one agenda.

- 3.5 The level of involvement from ward Councillors, parish councils, resident groups and public sector partners (Police, health etc) in the forum has been generally very good. We need, however, to continue to encourage participation from stakeholders who are not currently well represented. For example, it would be useful to hear from business and church representatives in this forum.
- 3.6 From a Solihull Partnership perspective, the Partnership Forums are achieving the aims that we set for them: The forums have:
- **Provided an opportunity for information exchange and dialogue about the work of the Solihull Partnership and local partners.**
  - **Influenced the Partnership's priorities.**
  - **Identified how common issues for the locality can be addressed.** For example, discussions at a forum meeting about resident's needs for advice services and the best way of providing led directly to the introduction of Citizen's Advice Bureau surgeries at GP practices in Lyndon, funded by the practice based commissioning consortium.
  - **Provided an opportunity to consult stakeholders about proposals affecting the locality.** For example, the forums provided a valuable opportunity to bring a variety of stakeholders together in each locality to explore the implications of the proposal in the draft core strategy of the Local Development Framework.

#### 4. Recommendations for Future Development

- 4.1 For the forum to be sustainable and useful in the long term, you need to be directing your own agenda and actively working together to tackle local issues. Recommendations to help achieve this are:
- (a) **Electing your own chair and vice chair.** To date, the meetings have been chaired and facilitated by staff from partner organisations chosen for their community engagement skills. It is suggested, however, that for your long term sustainability, the forum needs to elect your own chair and vice chair who can then work with the staff supporting the forums to shape your agenda. We will provide appropriate support to chairs e.g. briefings and access to training and will also continue to send out the agendas and take the notes. It is suggested that we seek nominations for chair and vice-chair before the next meeting (to be held on 18<sup>th</sup> October) and carry out the elections of chair and vice-chair at this meeting.
- (b) **Make the meetings open to the public and publicise them.** We have always wanted these to become public forums but we decided to allow them to develop and mature for a period first. The format would need to be adapted to facilitate public engagement e.g. by introducing a question and answer session at the start before moving onto a pre set agenda which could either be open or closed.
- 4.2 You are also asked to consider which common issues you would like to tackle at future meetings. Some possibilities include:
- Lack of facilities for young people (particularly sports facilities) in the area.
  - Traffic congestion and speeding through rural areas.
  - Community based action to meet rural transport needs.
  - Identifying and meeting rural housing needs.
  - How do we increase community involvement and volunteering?

### 3. Rural Partnership Forum – Issues Identified

Issue	Proposed Action
3.1 Rural transport is a big issue, withdrawal and changes of bus services.	<ul style="list-style-type: none"> <li>- Discussed at Nov 2010 meeting with CENTRO. To be discussed again at meeting in June 2011.</li> <li>- We also need to explore community based solutions.</li> </ul>
3.2 Issues around access to services and facilities, compounded by lack of transport.	<ul style="list-style-type: none"> <li>- Discussed at Nov 2010 meeting in conjunction with transport issues.</li> </ul>
3.3 Lack of facilities for young people (particularly sports facilities) in rural areas	<ul style="list-style-type: none"> <li>- Suggested topic for future meeting. Invite planners, council sports and leisure team, sports council, leisure providers and youth service to participate.</li> </ul>
3.4 Implications of an ageing population (e.g. transport / housing / care at home)	<ul style="list-style-type: none"> <li>- Discussed at meeting on 23<sup>rd</sup> Feb 2011.</li> <li>- Return to the issues raised about housing, care and transport at a future meeting.</li> </ul>
3.5 Ability to implement Village Plans	<ul style="list-style-type: none"> <li>- The Forum provides opportunity for better dialogue about transport, access to services, and youth facilities.</li> <li>- Parish Councils are discussing issues around recognition of parish plans with Solihull Council through Solihull Area Committee.</li> </ul>
3.6 Lack of affordable housing in rural areas	<ul style="list-style-type: none"> <li>- Discussed at Nov 2010 meeting as part of the discussion about the emerging core strategy.</li> </ul>
3.7 Traffic congestion and speeding through the rural areas.	<ul style="list-style-type: none"> <li>- Suggested topic for a future meeting. Will need Police and Transport &amp; Highways there.</li> </ul>

**Draft Minutes of Rural Partnership Forum Meeting  
held on Wednesday 23<sup>rd</sup> February 2011**

**Attendees:**

Stephen Munday (Chair), Solihull NHS Care Trust  
Sarah Barnes, Solihull Partnership  
Councillor Bell, Meriden Ward  
Les Brown, Office for National Statistics (Census)  
Dennis Clay, (Census)  
Hannah Colson, Solihull Partnership  
Peter Ewin, Knowle Society  
Alan Head, Balsall Common Village Residents Association  
Jacqueline Jones, West Midlands Fire Service  
Reena Kaur, Solihull Partnership  
Dr Gill Lewis, Hampton in Arden Parish Council  
Kenneth Meeson, Berkswell Parish Council  
Councillor Meeson, Dorridge & Hockley Heath Ward  
Will Markham, Save Our Children Organisation  
Chris Noble, Cheswick Green Parish Council  
Councillor Potts, Knowle Ward  
Glyn Price, Balsall Common Village Residents Association  
Alyson Thompson, Office for National Statistics (Census)  
Deborah Walker, Hampton in Arden Society

**Apologies:**

Councillor Allsopp, Meriden Ward  
Councillor Burgess, Blythe Ward  
Councillor Cresswell, Blythe Ward  
Margaret Fulford, Mothers Union  
Kath Hemmings, Neighbourhood Manager  
Dr Geoffrey Naylor, GP Consortia  
Councillor Rebeiro, Knowle Ward  
Steve Patalong, Warwickshire Rural Community Council  
Tidbury Green Parish Council

**1. Welcome and Introductions**

Stephen Munday welcomed everyone to the third meeting of this Forum; it was noted there were fewer attendees due to a clash with a council event and because the meeting date fell during February half term week. Introductions were made around the table.

**2. Notes of Meeting held on 17<sup>th</sup> November (as distributed)**

The notes of the meeting held on 17<sup>th</sup> November 2010 at Meriden Village Hall, were approved subject to the following amendments:

- Page 1 – The word ‘Parish’ to be added to Cheswick Green Council
- Page 4 – Under the heading principles of Rural Transport, the notes state that Centro provide support around non-financially viable routes by cross-subsidising from more profitable routes. Chris Noble pointed out this is not the case in the West Midlands although it is in London. Notes to be changed accordingly.

### **Updates on matters arising were reported:**

Planning for Solihull's Future: Sarah informed the Forum that the responses to the consultation on the draft Core Strategy are to be reported to Councillors in March. After this, everyone who made a submission will receive an e-mail or letter letting them know where they can see the report.

Later this year, there will be a period during which the draft Core Strategy will be published for comment, with a view to submitting to the Secretary of State in spring 2012.

Chris Noble asked what happens once the current Unitary Development Plan (UDP) expires as this will be prior to the formal adoption of the new Core Strategy. Councillor Meeson replied that the Council will continue to use the UDP to defend against inappropriate development until a new plan is adopted in its place.

Councillor Meeson, advised Forum members that Hockley Heath Parish Council are looking to devise a village plan. A number of forum members expressed concern about the lack of feedback or recognition from Solihull Council once Parish Plans are sent to them. Councillor Meeson stated that the contents of Parish Plans should be reported to Councillors. Provisions in the Localism Bill potentially give local plans more teeth.

Transport: Sarah Barnes informed the Forum that Steven Hayes from Centro who attended the last forum meeting, will be invited to attend the next one in June to discuss the results of the survey of travel needs recently conducted by Centro. Councillor Potts asked whether the survey was now complete; Sarah undertook to find out and report back.

There is a meeting on 28<sup>th</sup> February with Berkswell, Meriden and Balsall Common Parish Councils to discuss specific issues in that area.

Sarah informed the group about a conference on 'Driving change in transport through the voluntary and community sector' which is taking place on the 9<sup>th</sup> March. Hannah Colson to circulate the website link to forum members (<http://www.rawm.org.uk/news-events/events/vcs-driving-transport-change>). Sarah will be attending this and will feed back to the next meeting. Sarah also advised forum members that they are welcome to attend Centro's next Transport Users' Forum on Tuesday 22<sup>nd</sup> March, 6pm, in the Civic Suite.

Issues were raised regarding the impact the re-location of Severn Trent [to Coventry] has had on feeder train station car parks. Several forum members raised concerns regarding car parks at village train stations being full from early in the morning and the knock on effects of commuter parking in surrounding streets.

### **3. Census 2011**

A presentation was given by Alyson Thompson, Census Area Manager, explaining that the Census (taking place on Sunday, 27 March) would need to engage the whole population. The levels of future government funding for our Borough over the next ten years will depend on the information collected.

In support of national and local press campaigns, Alyson's team are talking to community groups, visiting libraries and Age UK to emphasise the importance of completing the Census form and the penalty for non-compliance. They would also emphasise the security/confidentiality of the information given – it would only be used for statistical purposes and will not be given/sold to any other organisations.

In Solihull 6,000 people failed to complete the form during the 2001 Census – many failed to realise there was a legal requirement to comply, so Alyson asked all those present to

ensure that their communities were informed. She could provide a prepared article to incorporate into local Newsletters.

The possibility of bogus officials taking advantage of the Census was discussed, and Alyson confirmed that all Census staff would carry identity cards. To allay concerns, home visits could be arranged by phone with a secure password, and the community should be asked to remember to help neighbours and friends.

Alyson requested forum members to make as many people aware as possible within their local communities that the Census is happening and that help is out there for vulnerable people if they need help with the form. Forms will start to be sent out from early March.

For further help and advice **Alyson's email address: [F104@census.gov.uk](mailto:F104@census.gov.uk)**.

#### **4. Implications of an Ageing Population**

Sarah circulated a presentation on 'Older people in semi-rural Solihull', and provided a brief overview of the main headlines within the presentation, including:

- Semi-rural Solihull has a significantly higher proportion people aged between 65 and 74 years (10.2% of total population) than the national average (8.9%)
- The largest concentrations of people aged 65+ are in Meriden East, Knowle and Dorridge.
- Population projections suggest that the population of those 65+ will increase by 18% in the 10 years to 2020 and 39% by 2030. These increases will have significant implications, not least for the types of housing and services required in the area.

Reflections on the information included:

- Stephen Munday noted we should celebrate that people are living longer; but also take into consideration the implications this has on Solihull particularly in terms of people becoming more vulnerable as their age increases.
- Councillor Meeson advised forum members, that Solihull needs more local agencies [voluntary & statutory] to provide care for older people in the rural areas.
- The idea of a retirement village was discussed, where people go in at the age of 65, and then move to different housing within the village as you get older.
- Forum members agreed that housing to enable people to stay as independent as possible is what is required in the rural areas of Solihull.
- Social isolation is a potential issue within rural areas of Solihull, particularly for the 65+ population; there is a need to make sure residents are aware of things going on within their local communities.
- Chris Noble informed forum members that Cheswick Green Parish Council is looking to provide residents with a small meeting room which can be used for local agencies as a contact point for residents, and also exercise classes for older people ~ this provides both health benefits and social benefits for older residents.
- Finding the people to volunteer is a potential problem within rural areas.
- Local voluntary organisations need help from the Local Authority to be able to access external funds.

#### **5. On-line Security**

Will Markham, an Information Security Consultant, was welcomed to the meeting. Will gave a presentation on on-line security to raise the awareness of the dangers and educate people as much as possible. The presentation highlighted 13 ways to stay safe on-line:

1. Keep personal and sensitive data off your computer
2. Avoid saving credit card information on on-line sites
3. Mozilla Firefox can be downloaded for free to help protect your computers
4. Be aware of sites that offer prizes/awards in exchange for personal information.
5. Be conscious of web security (look for the s at the end of http). Never click a link through an email.
6. Examine privacy policies and seals ~ [check postal addresses of companies].
7. Remember YOU decide what information you give out.
8. Be very careful about credit card details, don't give them out over the telephone.
9. Sign up to verified by Visa or Mastercard Secure Code as an extra level of security.
10. Regularly get a copy of your credit file and check any entries you don't recognise.
11. Be wary of post, phone calls or emails offering deals out of the blue.
12. If you have become a victim of fraud be aware of fraud recovery fraud.
13. Be very cautious of unsolicited job offers or opportunities to make easy money (always check contact details of overseas companies).

Will informed forum members that he is happy to come and speak to groups, particularly young people to raise awareness and educate about the dangers on-line. [If you would like to arrange this please contact Hannah Colson, [hcolson@solihull.gov.uk](mailto:hcolson@solihull.gov.uk) or 0121-704-8258, and she will put you in touch].

The following websites are where you can go for help about security issues on-line:

- o Get safe online ([www.getsafeonline.org](http://www.getsafeonline.org))
- o CEOP ([Child Exploitation and Online Protection Centre](http://www.ceop.gov.uk))
- o Home office ([www.homeoffice.gov.uk](http://www.homeoffice.gov.uk))

## 6. Close

It was agreed that the next meeting would take place on **Tuesday, 28<sup>th</sup> June 2011**; venue is still to be confirmed. Sarah Barnes, confirmed, topics for the next meeting would include transport and community safety; but in the mean time if there are any requests for items to be added to the next agenda please can they be sent to Hannah Colson ([hcolson@solihull.gov.uk](mailto:hcolson@solihull.gov.uk)). Stephen thanked everyone for attending.

Finally, Sarah drew attention to the information already distributed about the **Council's 'Civic Honours' - closing date for nominations Friday, 18<sup>th</sup> March.**

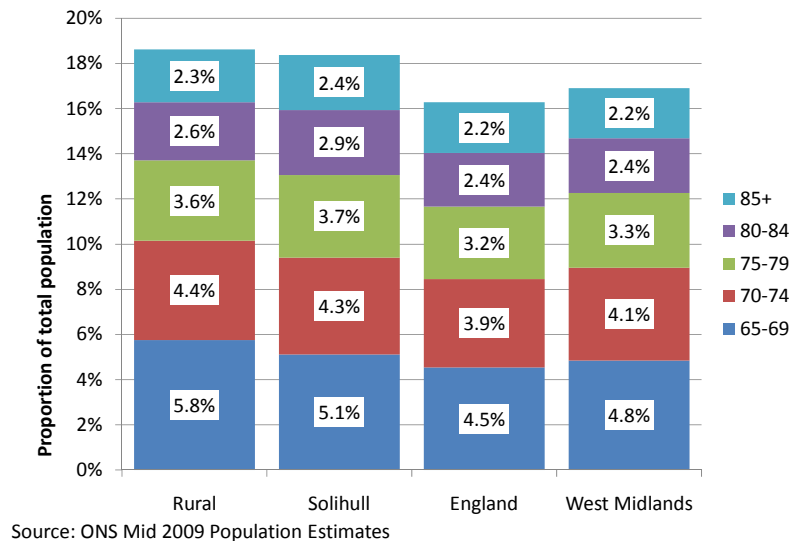


## Older People in Semi-Rural Solihull

There are around 9,300 people aged 65 and over in the semi-rural Solihull south and east of Solihull; this is 18.6% of the population, compared to 16.9% in the West Midlands and 16.3% for England as a whole.

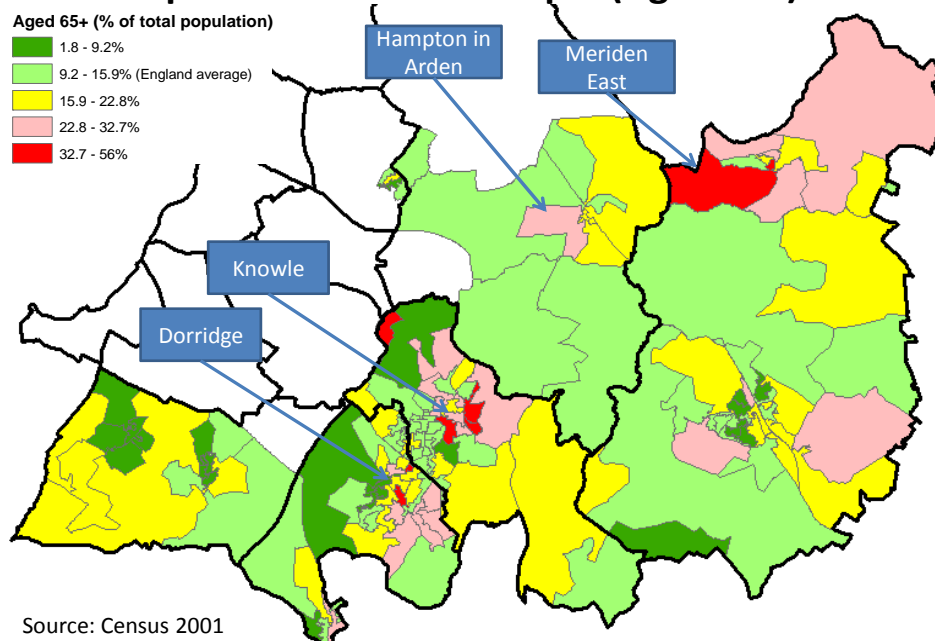
In particular, semi-rural Solihull has a significantly higher proportion of people aged between 65 and 74 years (10.2% of total population) than the national average (8.9%).

### Retirement Age Population



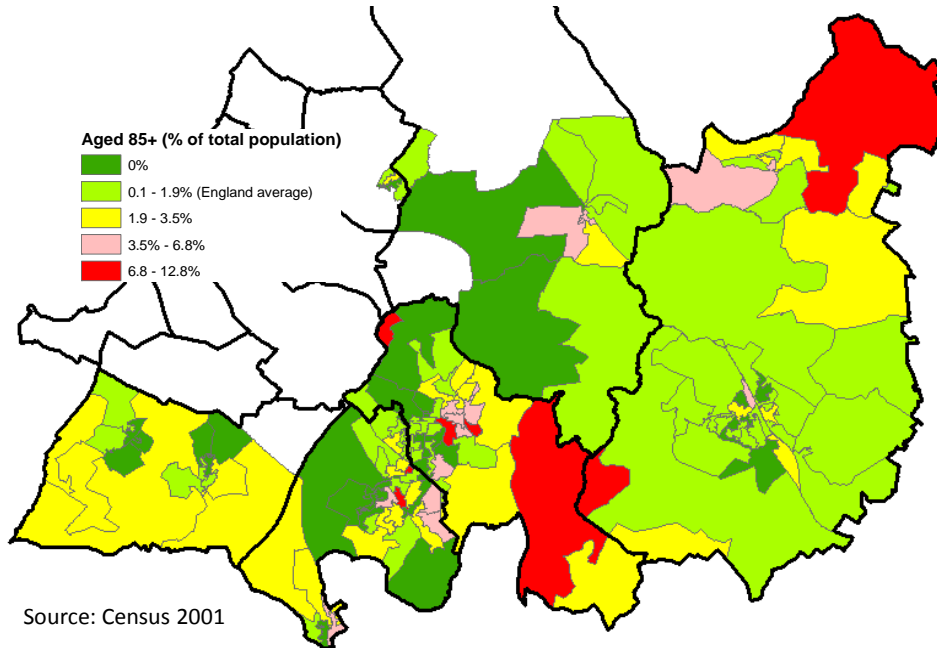
The main village centres in semi-rural Solihull all have parts where people aged 65+ make up over 22% of the total population. However, the largest concentrations are in Meriden East, Knowle and Dorridge.

### Population of Older People (Aged 65+)



A similar pattern is evident in respect of people aged 85 years and over., although more rural areas such as Meriden West and the south west part of Knowle ward feature more prominently.

### Population of Older People (Aged 85+)

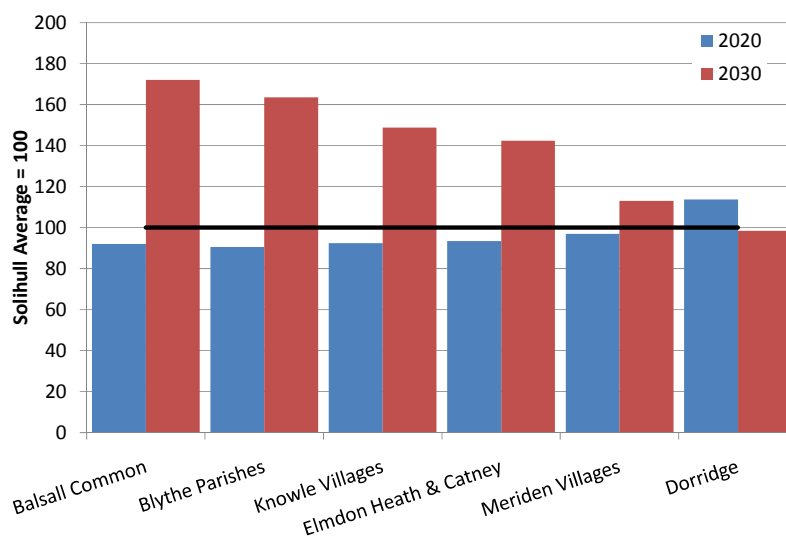


### Population Projections

Population projections suggest that the population of those 65+ will increase by 18% in the 10 years to 2020 and 39% by 2030.

Using these projections adjusted for local historical growth patterns, it is possible to make some broad estimations of population increase for different parts of semi-rural Solihull. All parts of semi-rural Solihull are projected to see a larger increase in the 65+ population than Solihull as a whole by 2030, although this is due to larger than average increases from 2020 onwards.

### Relative Growth in 65+ Population



## Older Peoples' Care and Service Requirements

Using a variety of local indicators it is possible to try and map variations in the extent of care and service requirements. This is based on the assumption that older peoples' need for health and social care services will vary depending on the underlying socio-economic and health circumstances and living arrangements and that relative disadvantage, as well as the number of older people resident, will require greater service provision.

To capture these dependencies the following indicators have been measured against the prevalence across England as a whole:

- Single pensioner households;
- Incapacity benefit claimants aged 50+;
- Claimants of pension credits;
- Proportion of residents aged 65+;
- Proportion of residents aged 85+;
- Proportion of population with limiting long term illness.

The map below illustrates the results for this index:

