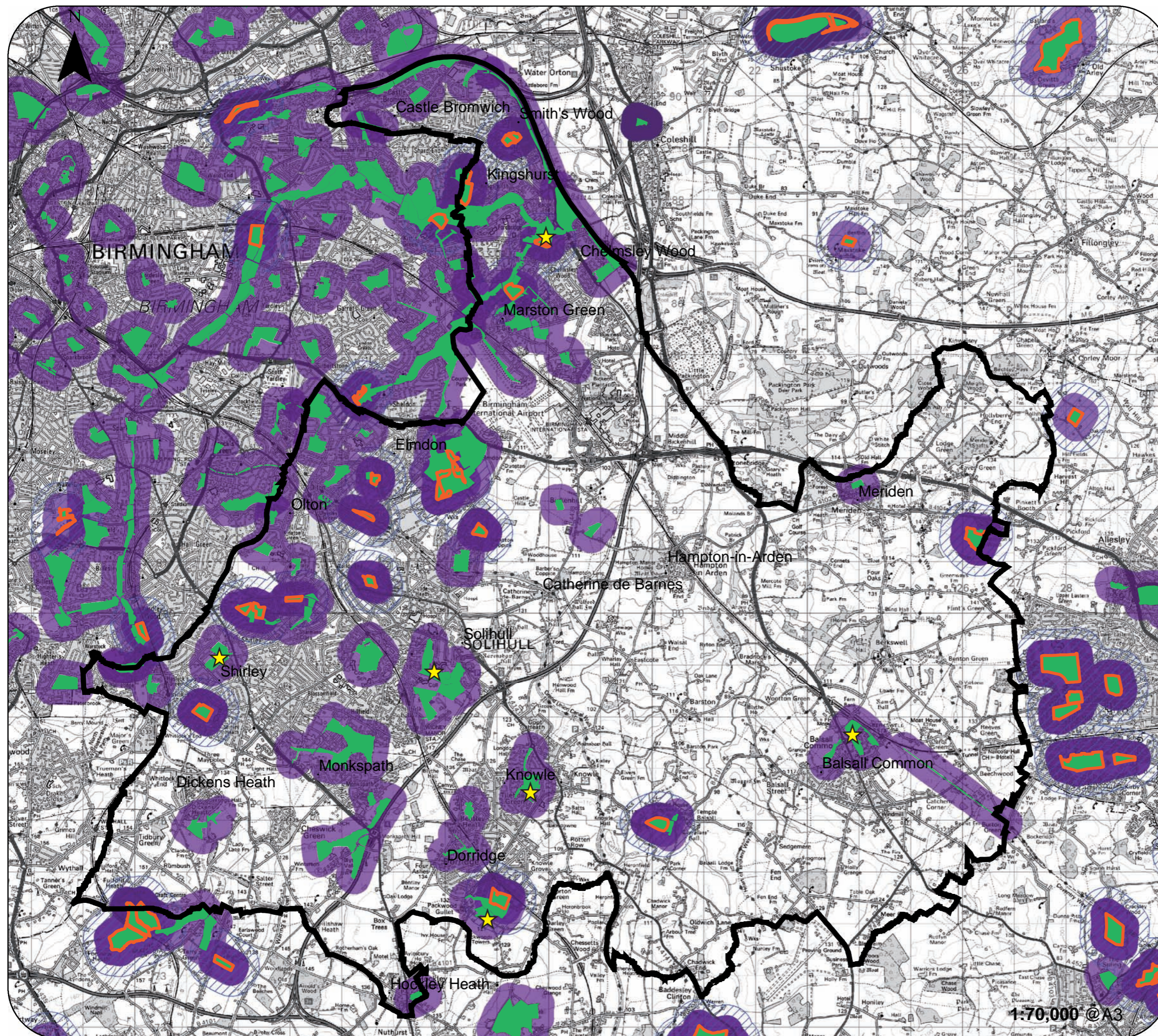


# Solihull MBC Green Infrastructure Study

**Figure 5.1: Accessible Greenspace Provision  
(Neighbourhood Scale  
- 2ha within 300m of home)**



★ Green Flag parks

### Key

- Accessible Greenspace (over 2ha)
- Accessible Woodland (over 2ha)
- 300m provision zone (ANGSt)
- 500m provision zone (WASt)
- Solihull boundary

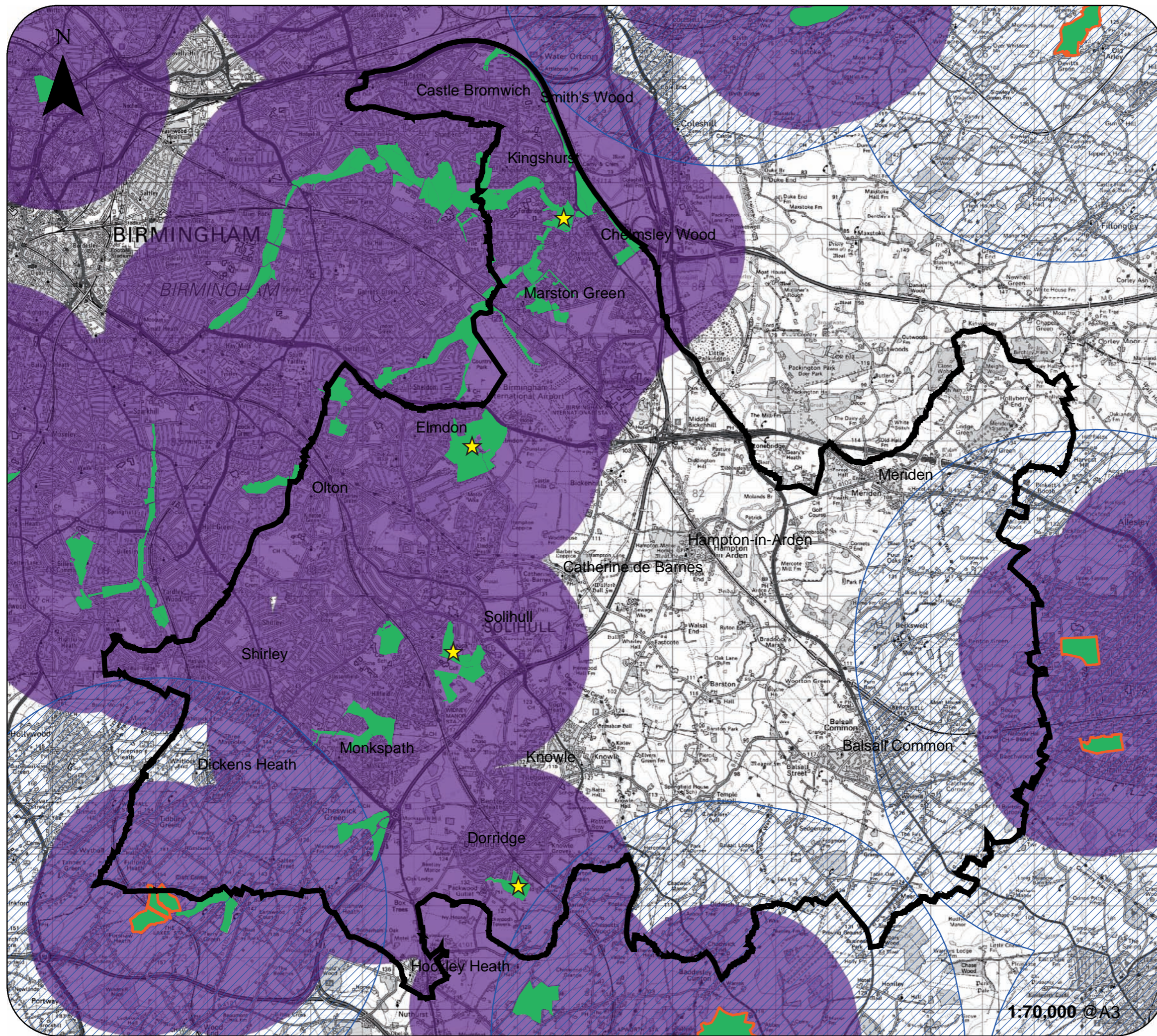
0 2 4 Km

Source: SMBC, BCC  
English Heritage,  
Natural England,  
Forestry Commission  
Woodland Trust

Date: Feb 2011  
Revision:

© Crown copyright. Unauthorised reproduction infringes Crown copyright and may lead to prosecution or civil proceedings. Metropolitan Borough of Solihull - 100023139 [2011]

1:70,000 @ A3



# Solihull MBC Green Infrastructure Study

**Figure 5.2: Accessible  
Greenspace Provision  
(District Scale  
- 20ha within 2km of home)**

★ Green Flag parks

**Key**

- Accessible Greenspace (over 20ha)
- Accessible Woodland (over 20ha)
- 2km provision zone (ANGSt)
- 4km provision zone (WASt)
- Solihull boundary

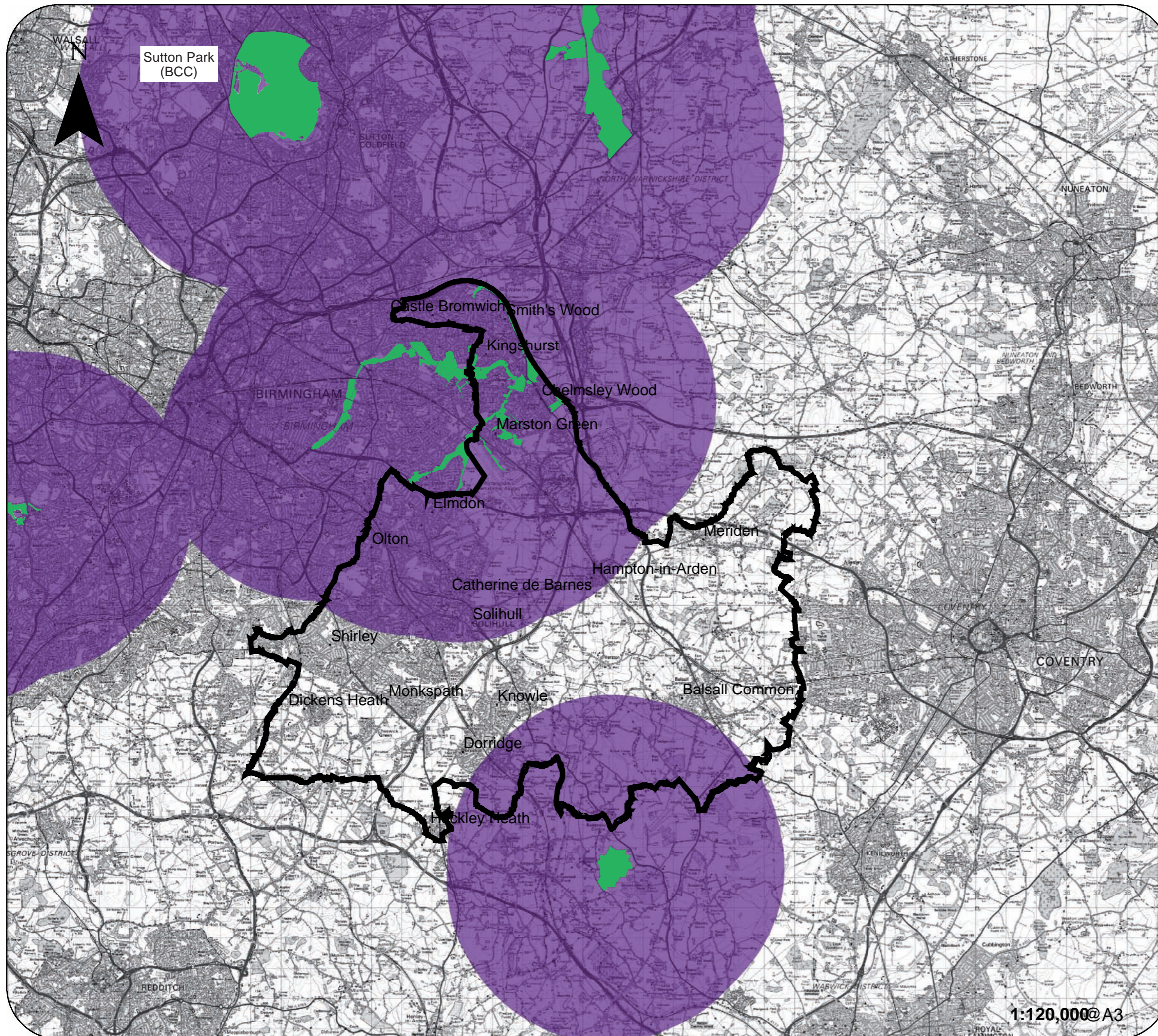
0 2 4 Km

Source: SMBC, BCC,  
English Heritage,  
Natural England,  
Forestry Commission  
Woodland Trust

Date: Feb 2011  
Revision:

© Crown copyright. Unauthorised reproduction  
infringes Crown copyright and may lead to  
prosecution or civil proceedings. Metropolitan  
Borough of Solihull - 100023139 [2011]

1:70,000 @A3



# Solihull MBC Green Infrastructure Study

**Figure 5.3: Accessible  
Greenspace Provision  
(County Scale  
- 100ha within 5km  
of home)**

### Key

- Accessible Greenspace (over 500ha)
- 10km provision zone (ANGSt)
- Solihull boundary

0 4 8 Km

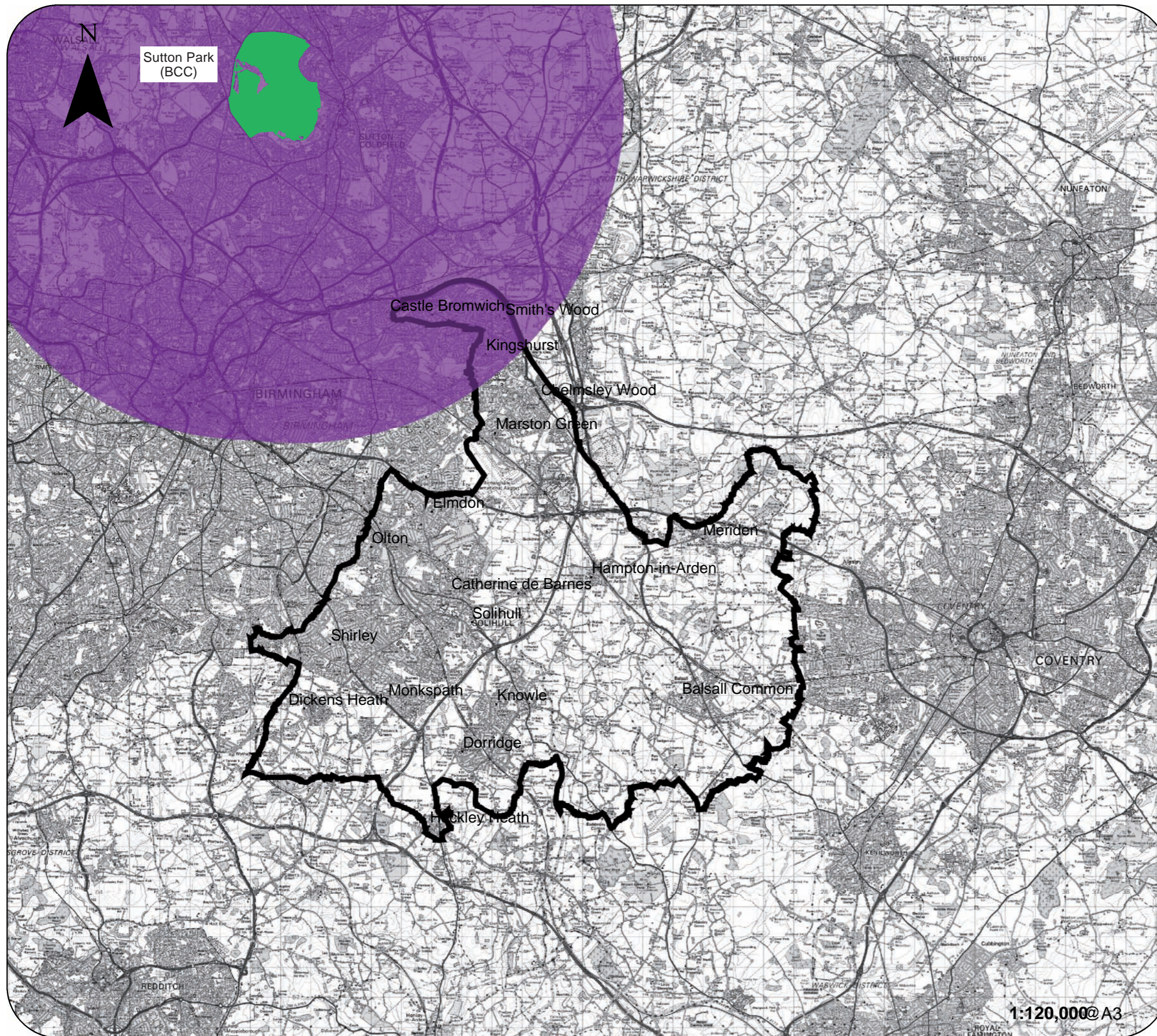
Source: SMBC, BCC,  
English Heritage,  
Natural England,  
Forestry Commission  
Woodland Trust

Date: Feb 2011

Revision:

© Crown copyright. Unauthorised reproduction  
infringes Crown copyright and may lead to  
prosecution or civil proceedings. Metropolitan  
Borough of Solihull - 100023139 [2011]

1:120,000@A3



# Solihull MBC Green Infrastructure Study

**Figure 5.4: Accessible  
Greenspace Provision  
(Regional Scale  
- 500ha within 10km  
of home)**

**Key**

- Accessible Greenspace (over 500ha)
- 10km provision zone (ANGSt)
- Solihull boundary

0 4 8 Km

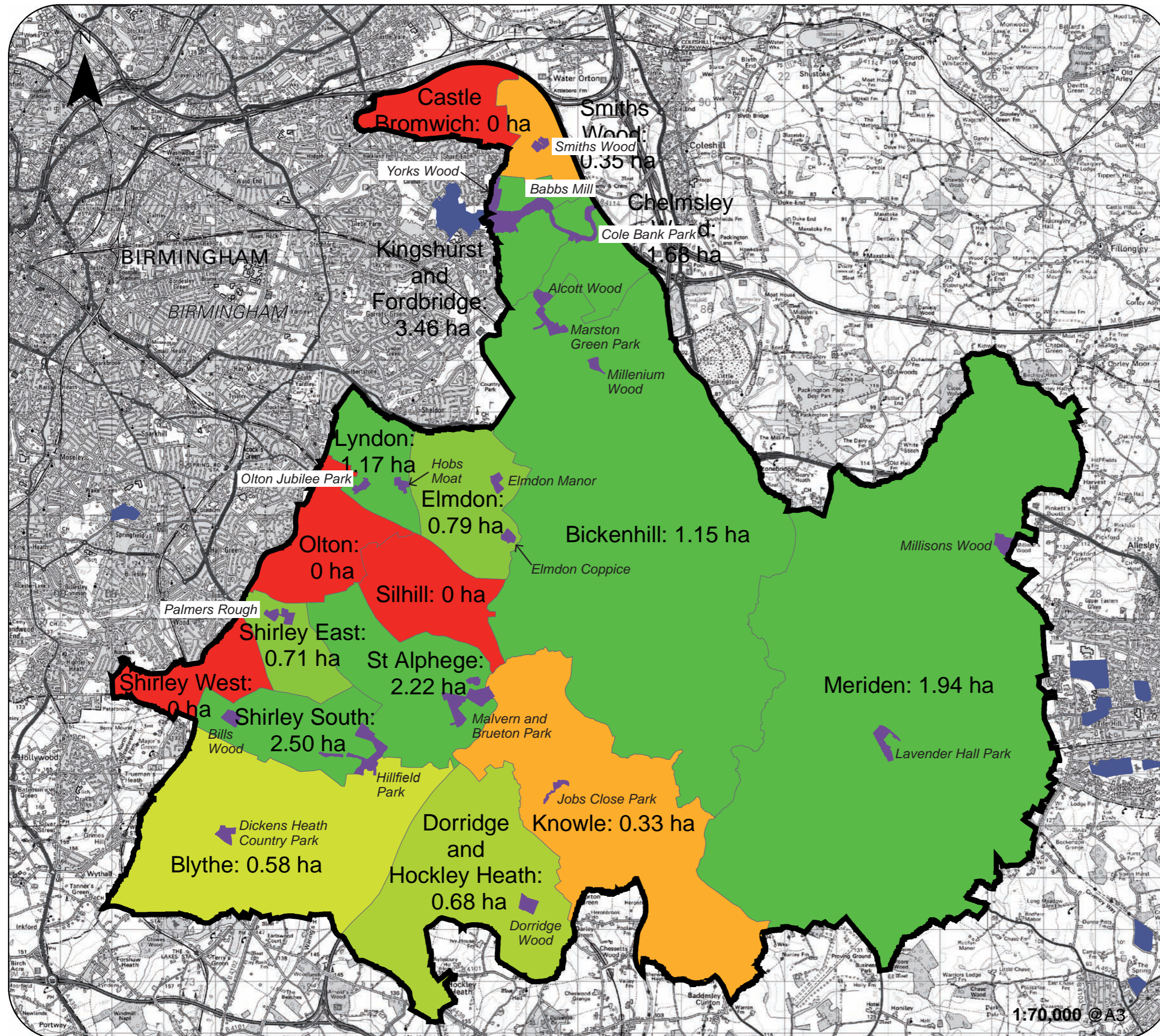
Source: SMBC, BCC,  
English Heritage,  
Natural England,  
Forestry Commission  
Woodland Trust  
Date: Feb 2011  
Revision:

© Crown copyright. Unauthorised reproduction  
infringes Crown copyright and may lead to  
prosecution or civil proceedings. Metropolitan  
Borough of Solihull - 100023139 [2011]

1:120,000@A3

# Solihull MBC Green Infrastructure Study

Figure 5.5: LNR Provision  
(Ha of LNR per 1000 head  
of population using 2007  
ward census data)



**Key**

- LNRs (within Solihull)
- LNRs (outside of the borough)

Ha of LNR/1000 head of popn. in each ward

- 0.00 - 0.10
- 0.11 - 0.20
- 0.21 - 0.30
- 0.31 - 0.40
- 0.41 - 0.50
- 0.51 - 0.60
- 0.61 - 0.70
- 0.71 - 0.80
- 0.81 - 0.90
- 1.00 - 4.00

Solihull boundary

0 2 4 Km

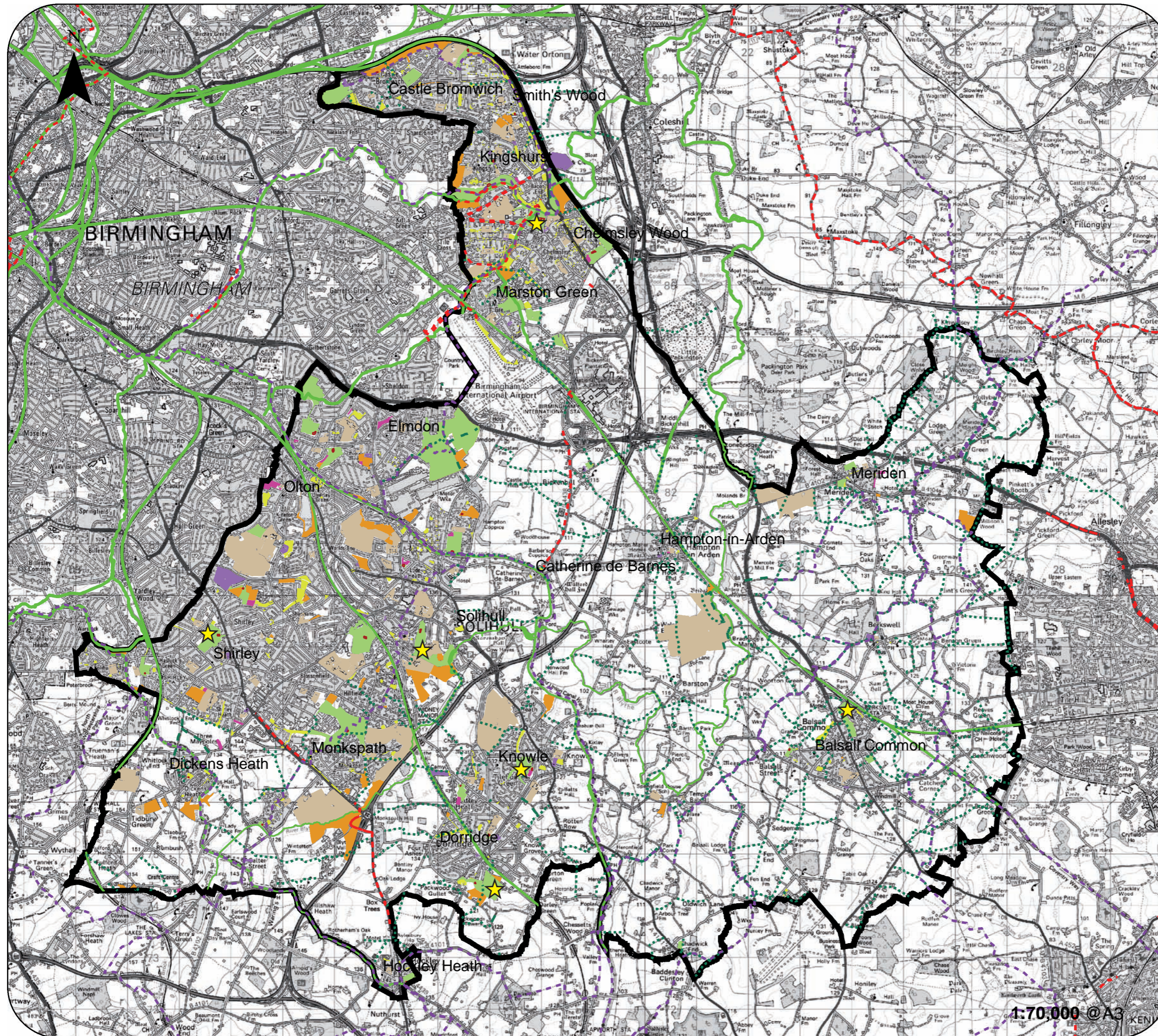
Source: SMBC, ONS  
Date: Feb 2011  
Revision:

© Crown copyright. Unauthorised reproduction infringes Crown copyright and may lead to prosecution or civil proceedings. Metropolitan Borough of Solihull - 100023139 [2011]

1:70,000 @A3

# Solihull MBC Green Infrastructure Study

**Figure 6.1: Greenspace:  
Access and Links**



**Key**

- Parks and gardens
- Natural/semi-natural urban greenspace
- Green corridor
- Amenity greenspace
- Allotments
- Churches and churchyard
- Outdoor Sports Facilities
- Provision for children/teenagers
- Solihull boundary
- Cycle Network
- Green Flag parks
- Long Distance Paths
- Public Rights of Way (PROW)
- BOAT (Byway Open to All Traffic)
- Bridleway
- Footpath

0 2 4 Km

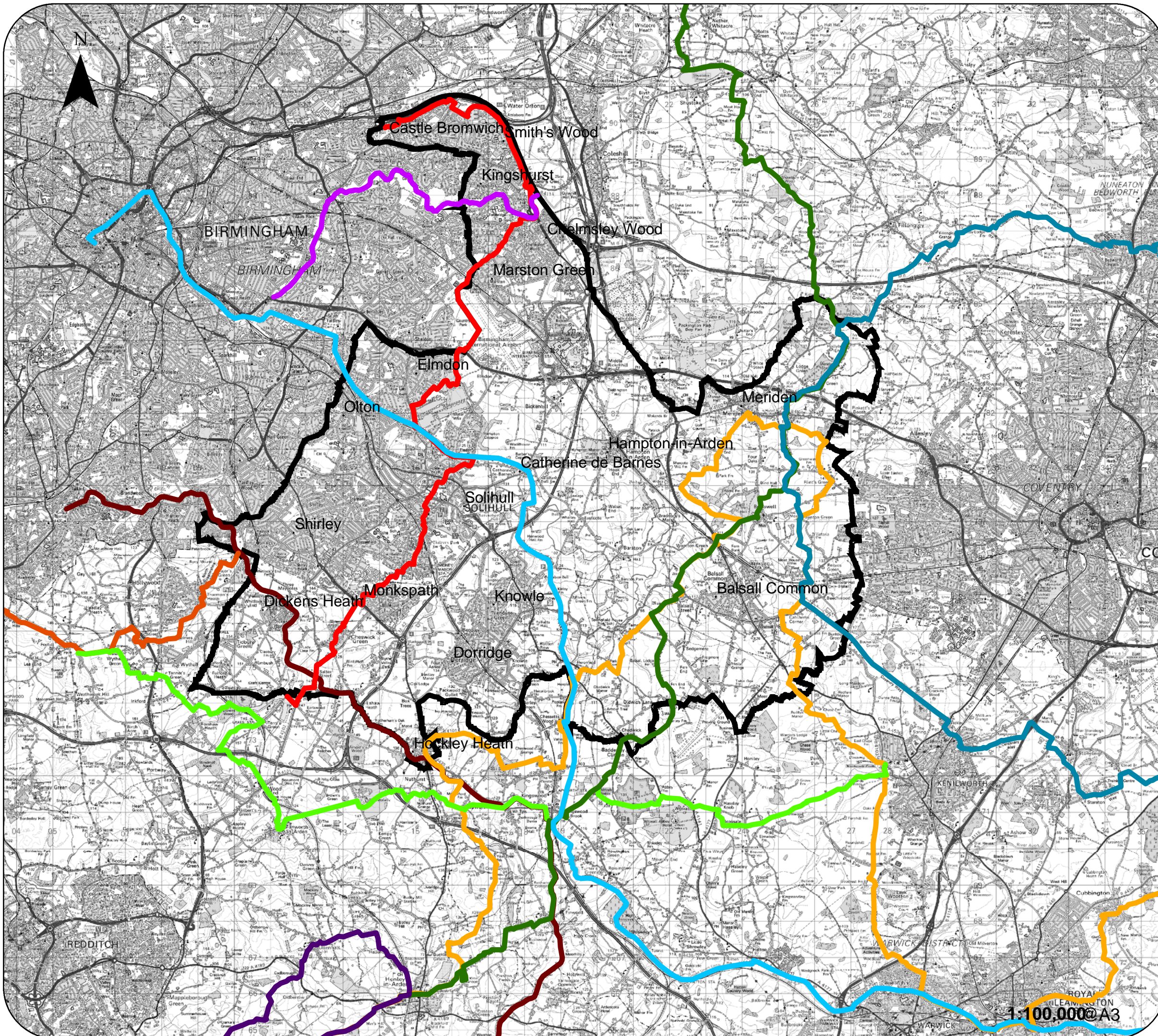
Source: SMBC, English Heritage,  
Natural England,  
Forestry Commission  
Date: Feb 2011  
Revision:

© Crown copyright. Unauthorised reproduction  
infringes Crown copyright and may lead to  
prosecution or civil proceedings. Metropolitan  
Borough of Solihull - 100023139 [2011]

1:70,000 @A3

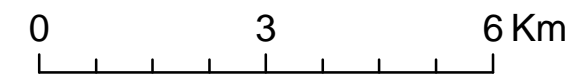
# Solihull MBC Green Infrastructure Study

**Figure 6.2: Long Distance  
Paths**



**Key:**

- Arden Way
- Cole Valley Way
- Coventry Way
- Grand Union Canal Walk
- Heart of England Way
- Midland Link
- Millennium Way (Warks)
- North Worcestershire Path
- Solihull Way
- Stratford Upon Avon Canal Walk
- Solihull Boundary



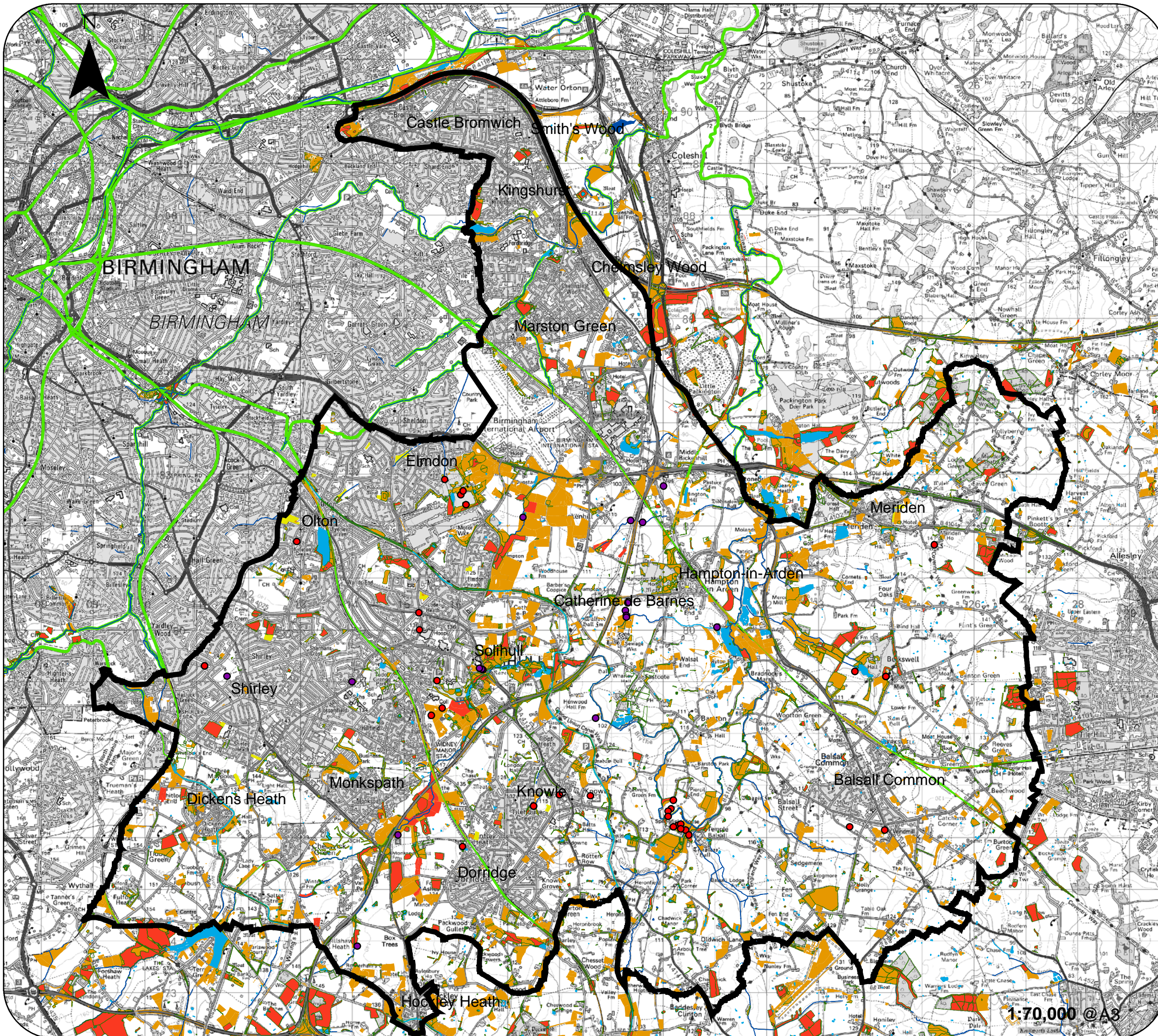
Source: SMBC  
Date: Feb 2011  
Revision:

© Crown copyright. Unauthorised reproduction infringes Crown copyright and may lead to prosecution or civil proceedings. Metropolitan Borough of Solihull - 100023139 [2011]

1:100,000 @ A3

# Solihull MBC Green Infrastructure Study

**Figure 7.1: Ecosystem  
Services - Provisioning  
Services (products)**



**Key:**

- High Biodiversity Value Habitat
- Medium Biodiversity Value Habitat
- Allotments
- Water (running)
- Water (standing)
- Wood - timber/fuel
- Solihull Boundary
- Green Links/Corridors
- Road Network
- Veteran Trees
- Black Poplar Trees

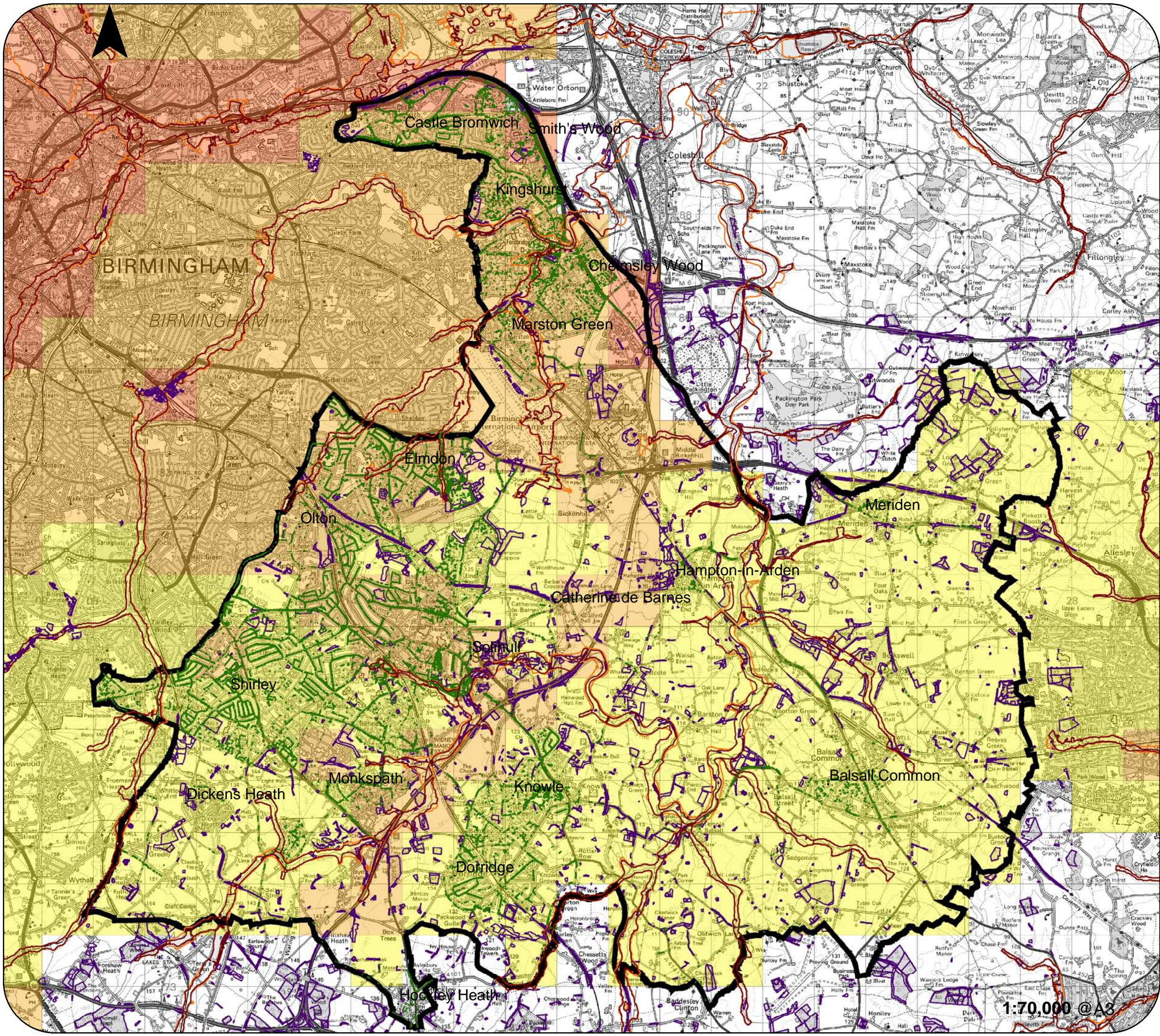
0 2 4 Km

Source: HBA 2011 Phase 1 data  
Ecorecord 2010  
Natural England  
SMBC  
Date: Nov 2011  
Revision:

© Crown copyright. Unauthorised reproduction infringes Crown copyright and may lead to prosecution or civil proceedings. Metropolitan Borough of Solihull - 100023139 [2011]

1:70,000 @A3





# Solihull MBC Green Infrastructure Study

**Figure 7.2: Ecosystem Services - Regulating Services (regulation of natural processes)**

**Key:**

- Street Trees
- NO2 (tonnes/km2)**
- 11 - 20
- 21 - 30
- 31 - 40
- 41 - 50
- Woodland
- Floodzone 1:100 Year
- Floodzone 1:1000 Year
- Solihull Boundary

0 2 4 Km

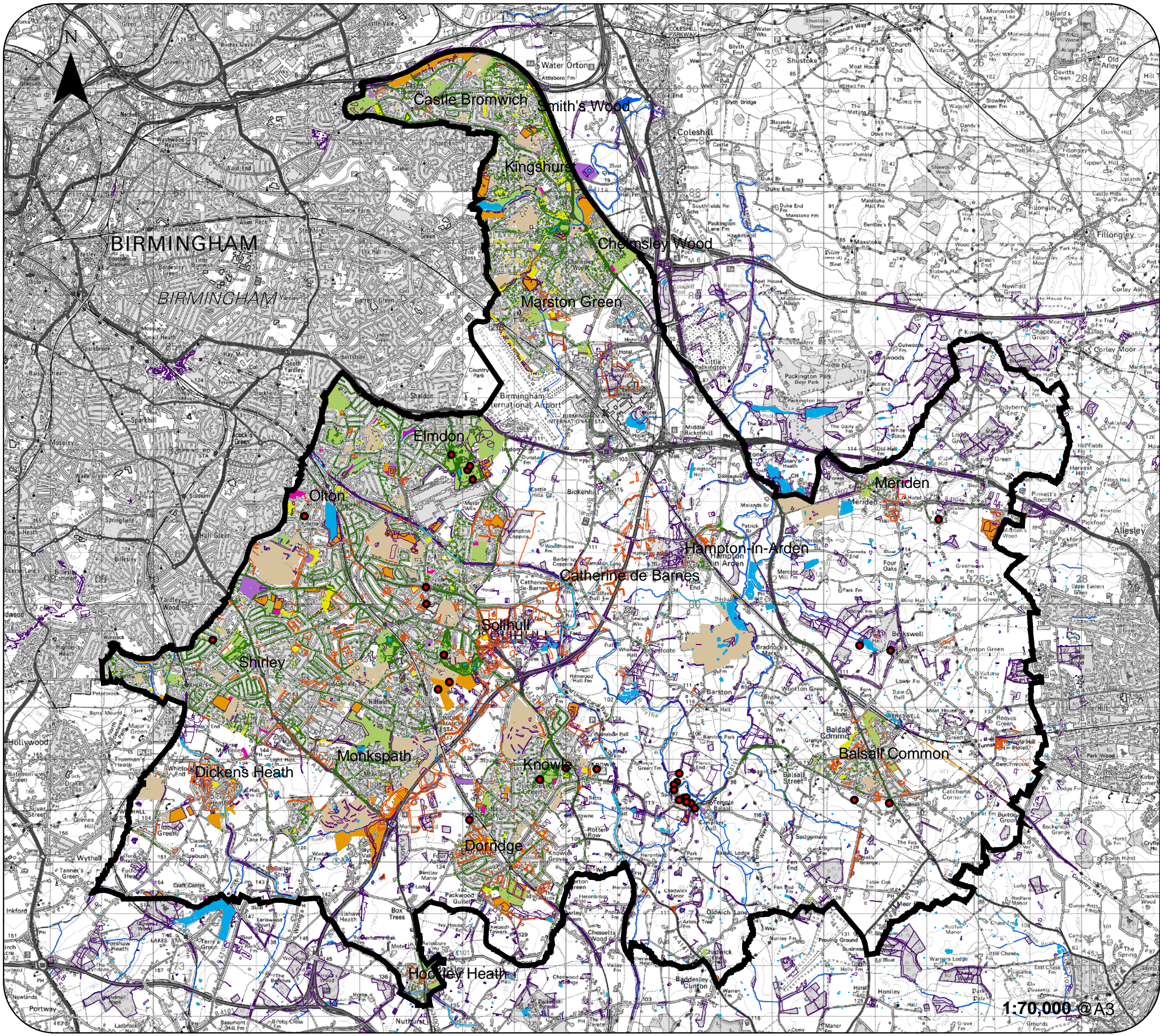
Source: NAEI 2009  
SMBC  
Date: Nov 2011  
Revision:

© Crown copyright. Unauthorised reproduction infringes Crown copyright and may lead to prosecution or civil proceedings. Metropolitan Borough of Solihull - 100023139 [2011]

1:70,000 @ A3

# Solihull MBC Green Infrastructure Study

## Figure 7.3: Ecosystem Services - Cultural



**Key**

- Parks and gardens
- Natural/semi-natural urban greenspace
- Amenity greenspace
- Allotments
- Water (Running)
- Water (Standing)
- Churches and churchyard
- Outdoor Sports Facilities
- Street Trees
- TPO
- Woodland
- Solihull boundary
- Veteran Trees

0 2 4 Km

Source: HBA 2011 Phase 1 data,  
Ecorecord 2010 data,  
SMBC, English Heritage,  
Natural England,  
Forestry Commission  
Date: Nov 2011  
Revision:

© Crown copyright. Unauthorised reproduction  
infringes Crown copyright and may lead to  
prosecution or civil proceedings. Metropolitan  
Borough of Solihull - 100023139 [2011]

1:70,000 © A3