

**LEGEND**

- West Midlands Region
- Authority Boundaries

Contains Ordnance Survey data © Crown copyright and database right 2010

**maslen**  
environmental  
part of the JBA Group

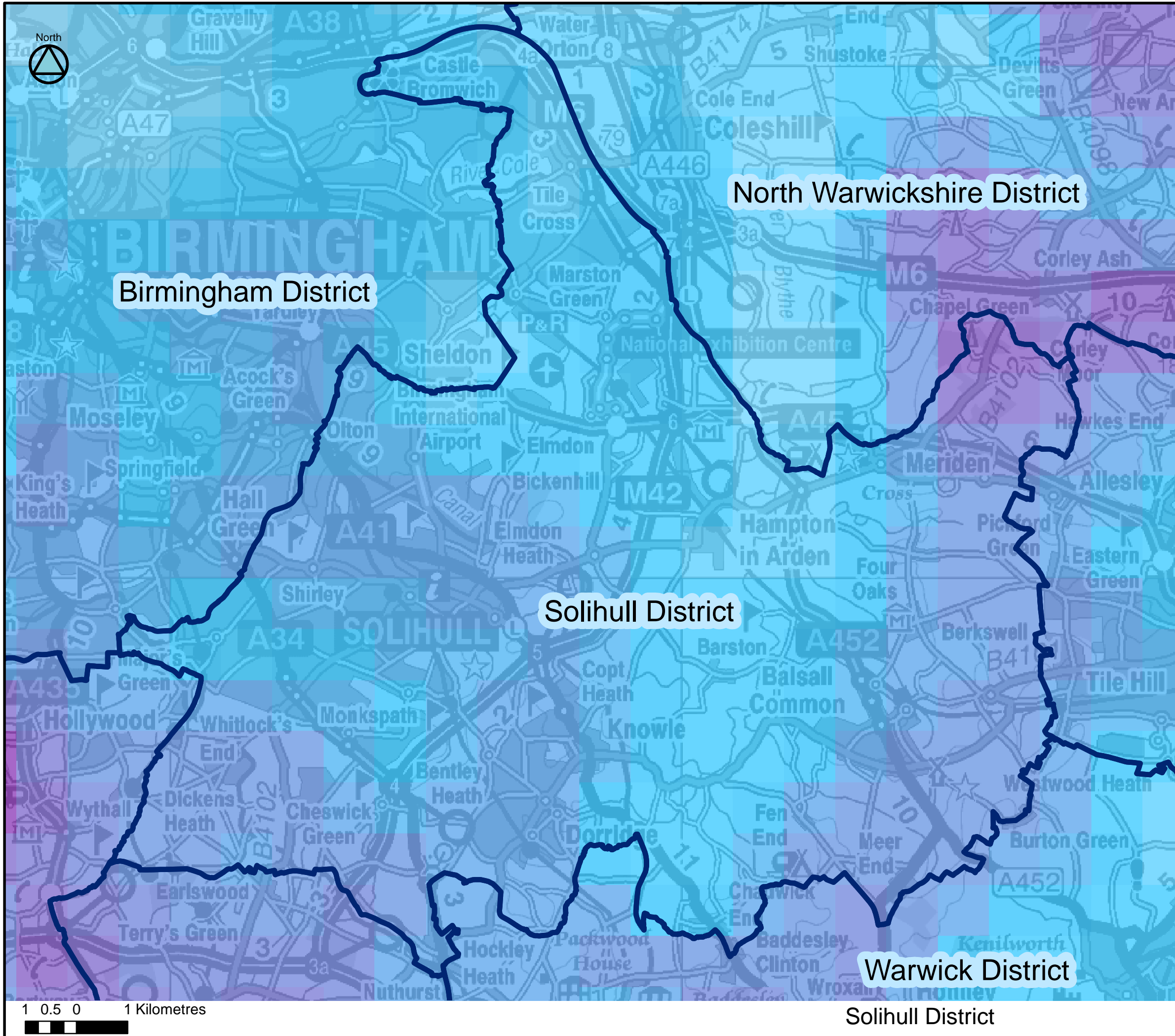


**SQW**





**co<sub>2</sub>sense**<sup>TM</sup>  
carbon sense 2 commercial sense

**FIGURE A1**  
AUTHORITY BOUNDARIES

2.5 Kilometres



LEGEND

-  West Midlands Region
  -  Authority Boundaries
  -  Areas of Insufficient Wind
- Windspeed at 45 magl**  
m/s
-  High : 9.5  
Low : 3.6

Contains Ordnance Survey data © Crown copyright and database right 2010

maslen  
environmental  
part of the JBA Group

SQW

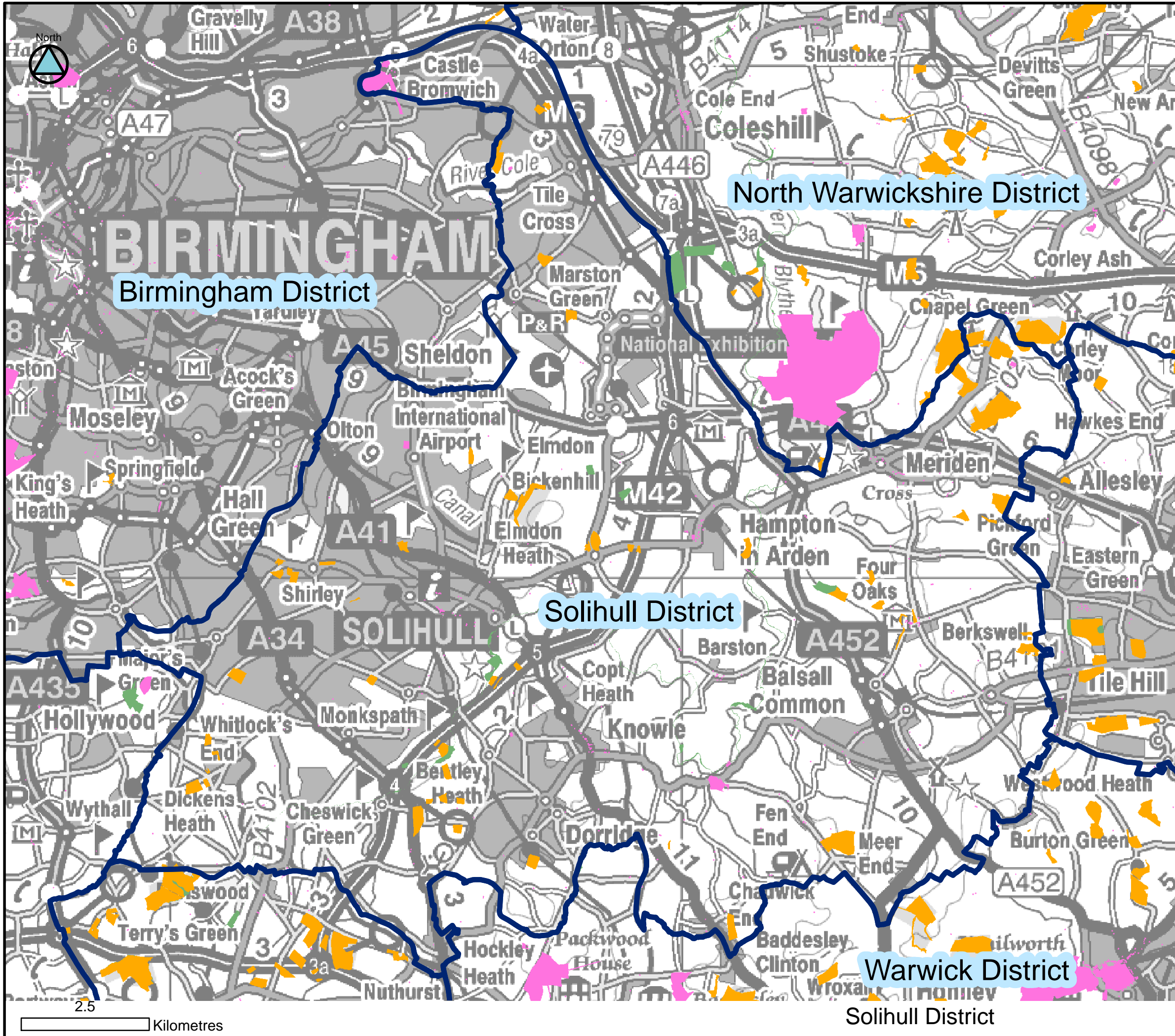
co<sub>2</sub>sense™  
carbon sense 2 commercial sense

FIGURE A2

WIND SPEED AT 45mabgl AND  
AREAS OF INSUFFICIENT WIND  
FOR COMMERCIAL WIND  
DEVELOPMENT

1 0.5 0 1 Kilometres





**LEGEND**

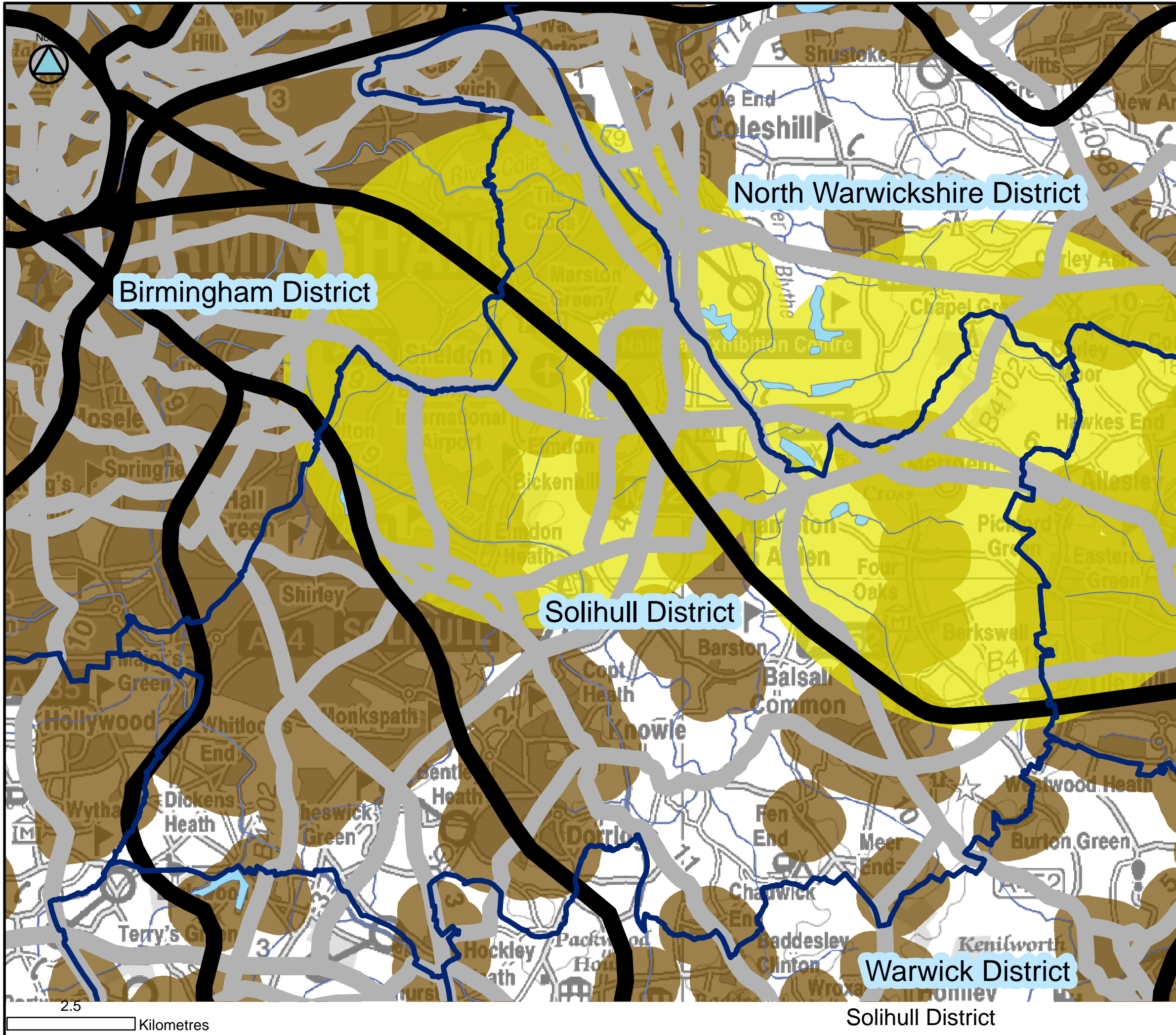
- West Midlands Region
- Authority Boundaries
- Ancient Woodland
- National and International Nature Designations
- Heritage Constraints
- National Park
- Area of Outstanding Natural Beauty

Contains Ordnance Survey data © Crown copyright and database right 2010 and data sourced from Natural England and English Heritage




**FIGURE A3**  
 LANDSCAPE DESIGNATIONS AND CONSERVATION



**LEGEND**

- West Midlands Region
- Authority Boundaries
- Railway Buffer
- Road Buffer
- Rivers and Lakes
- 5 km Airfield Buffer Zone
- High priority military low fly area
- OS Stratego urban areas with 600 m buffer

**Met Office Zone**

- Concerns to tall/wide structures
- Objections to turbines higher than radar

---

Contains Ordnance Survey data © Crown copyright and database right 2010 and data sourced from RESTAT

**maslen**  
environmental  
part of the JBA Group

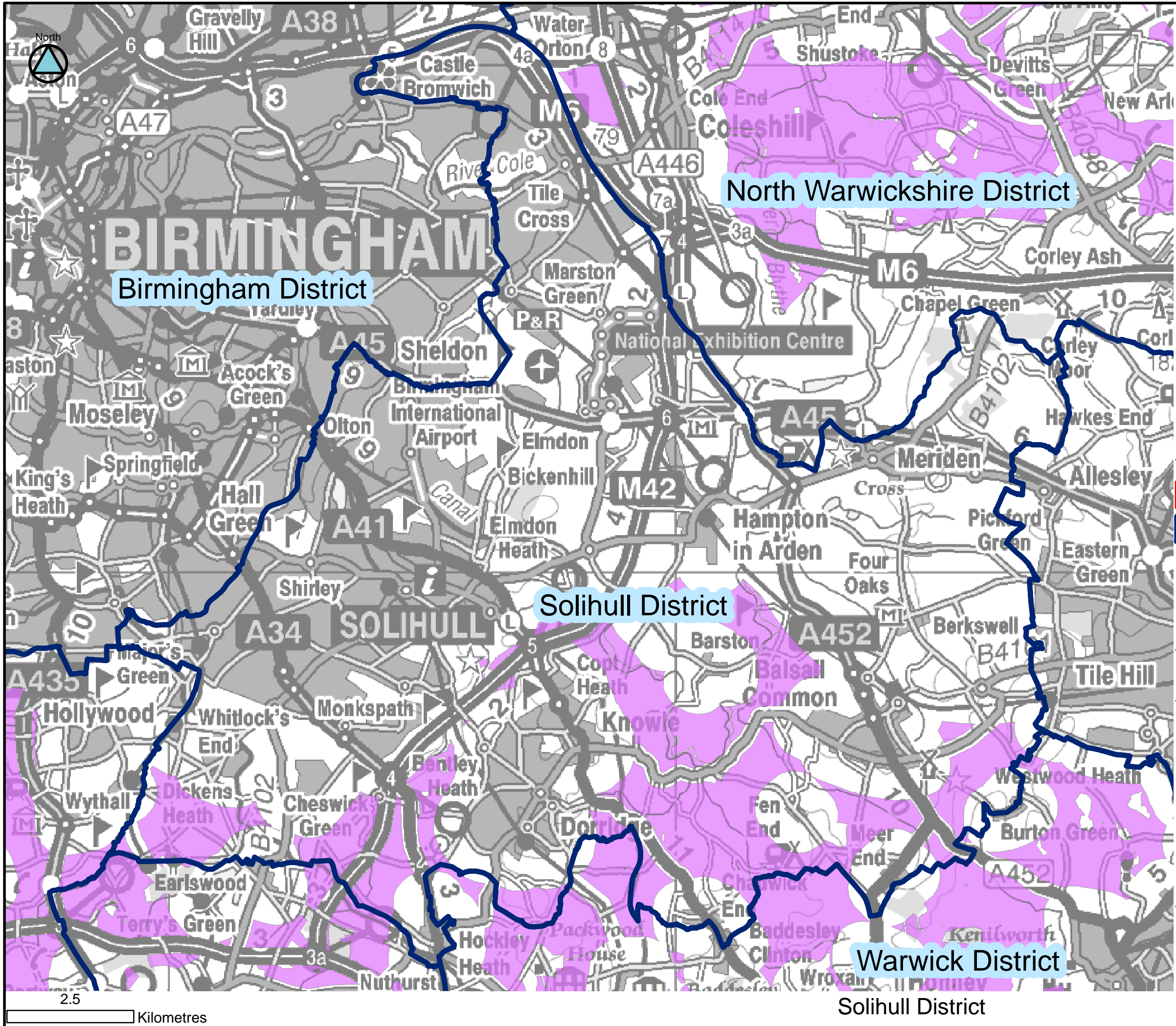
**SQW**

**co<sub>2</sub>sense**™  
carbon sense 2 commercial sense

**FIGURE A4**

OTHER COMMERCIAL WIND DEVELOPMENT CONSTRAINTS





LEGEND

-  West Midlands Region
-  Authority Boundaries
-  Landscape Designated Area
-  Non Designated Area

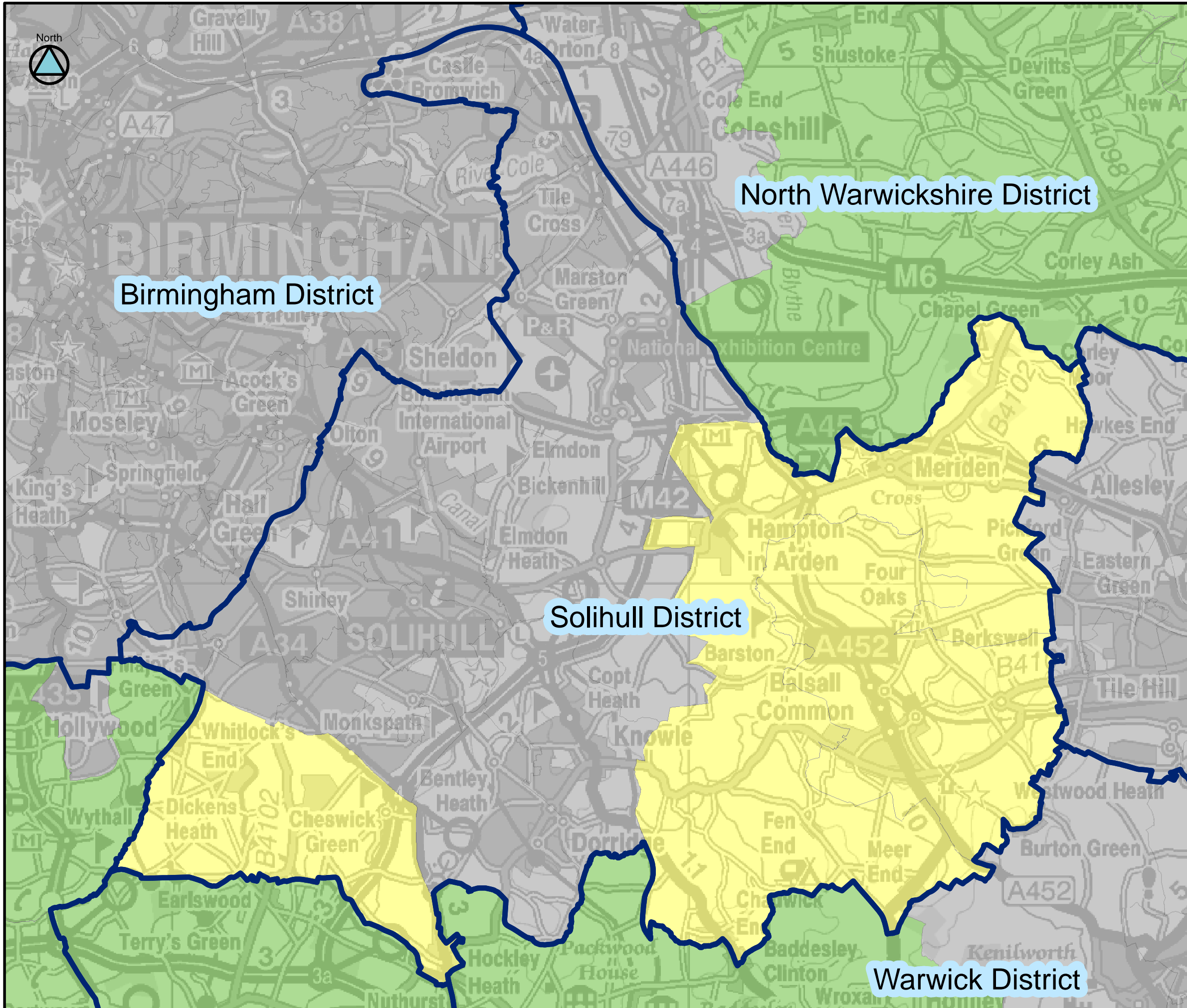
Contains Ordnance Survey data © Crown copyright and database right 2010

maslen  
environmental  
part of the JBA Group

SQW

co<sub>2</sub>sense™  
carbon sense 2 commercial sense

FIGURE A5  
UNCONSTRAINED AREAS FOR  
COMMERCIAL WIND



**LEGEND**

- West Midlands Region
- Authority Boundaries
- Classification of MLSOA**
- Urban
- Semi Rural
- Rural

Contains Ordnance Survey data © Crown copyright and database right 2010

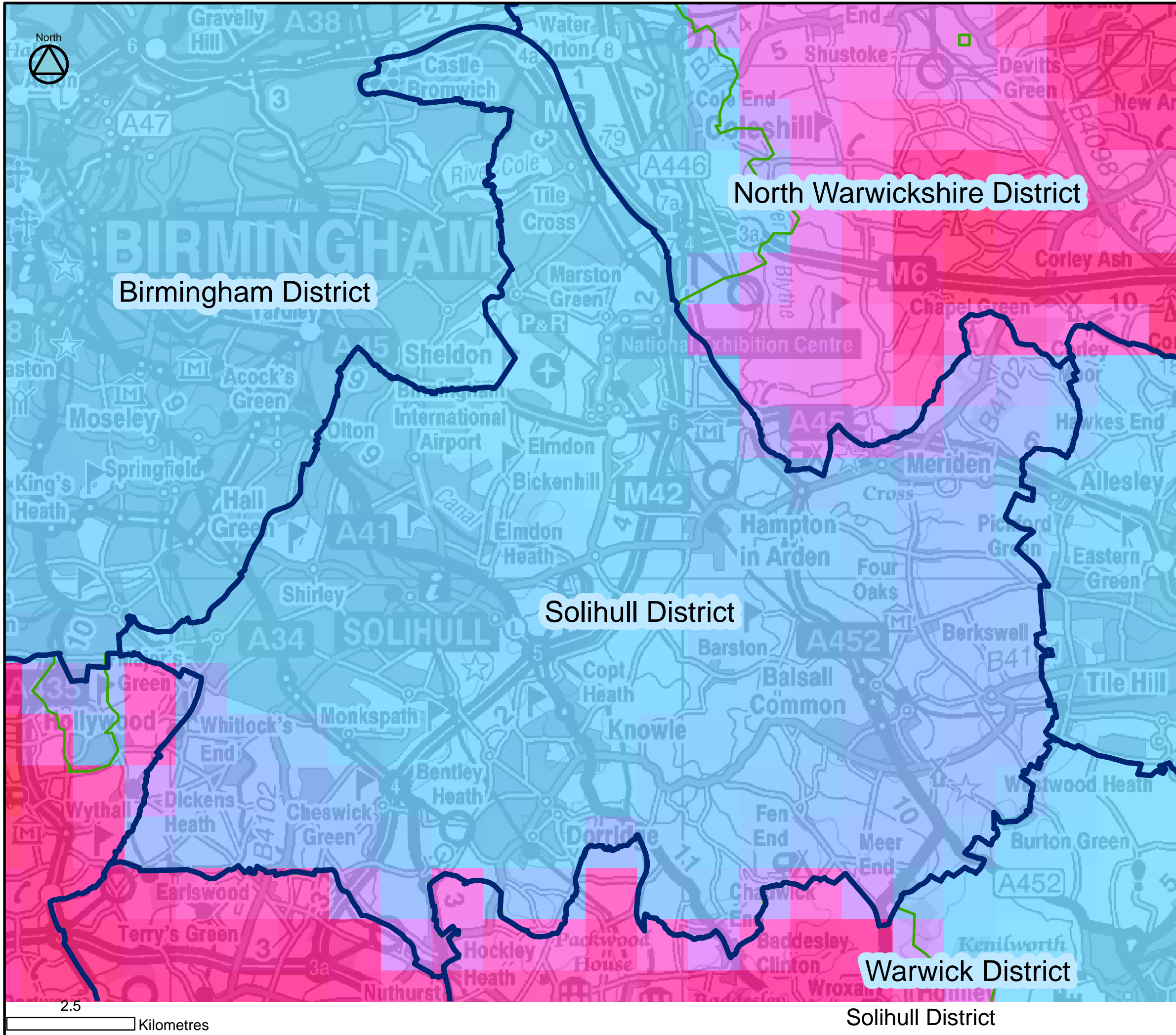
**FIGURE A6**

MLSOA RURAL CLASSIFICATION






2.5 Kilometres

Solihull District





**LEGEND**

-  West Midlands Region
  -  Authority Boundaries
  -  Areas with Sufficient Wind
- Wind Speed \* Scaling Factor**  
m/s
-  High : 8.24556
  -  Low : 1.94088

Contains Ordnance Survey data © Crown copyright and database right 2010



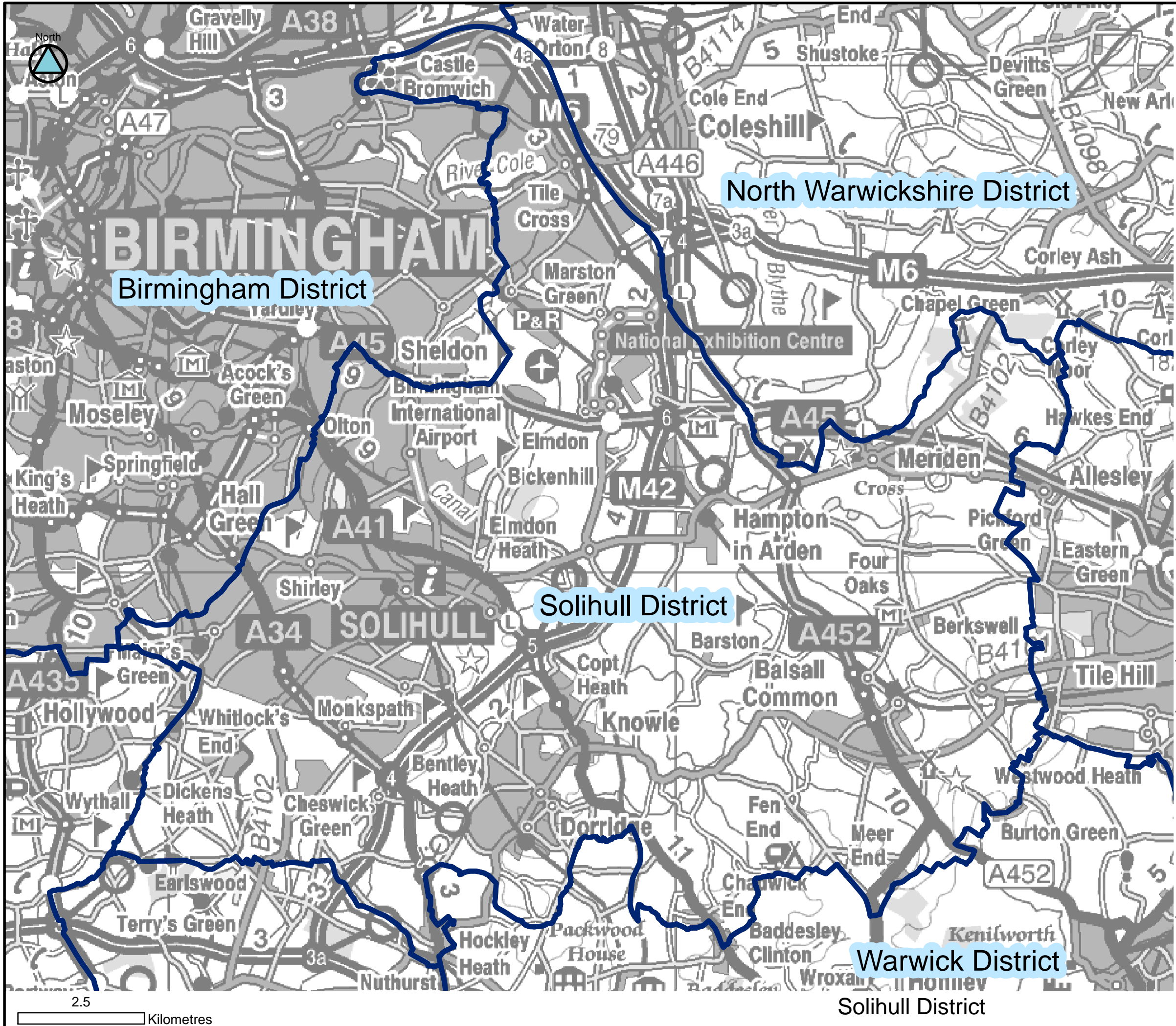
**maslen**  
environmental  
part of the JBA Group

**SQW**

**co<sub>2</sub>sense™**  
carbon sense 2 commercial sense

**FIGURE A7**

AREAS OF SUFFICIENT WIND  
FOR SMALL SCALE WIND  
DEVELOPMENT



LEGEND

- West Midlands Region
- Authority Boundaries
- + Existing Energy Crop Sites

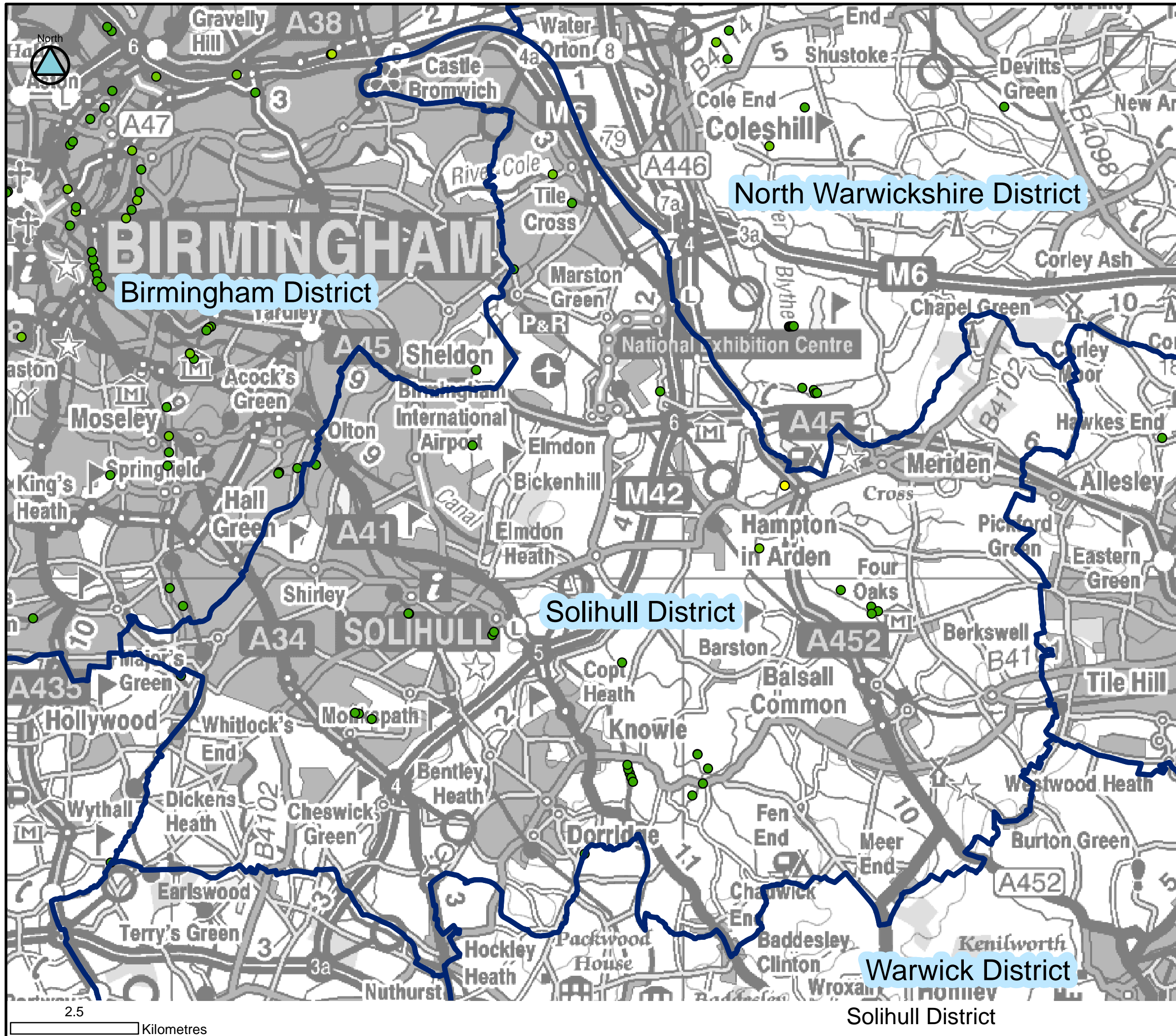
Contains Ordnance Survey data © Crown copyright and database right 2010 and data sourced from Natural England




FIGURE A8  
EXISTING ENERGY CROP SITES





**LEGEND**

- West Midlands Region
- Authority Boundaries

**Barriers**

**Power Categories**

- 0 - 10 kW
- 10 - 20 kW
- 100 - 500 kW
- 20 - 50 kW
- 50 - 100 kW
- 500 - 1500 kW
- > 1500 kW

Contains Ordnance Survey data © Crown copyright and database right 2010 and data sourced from the Environment Agency

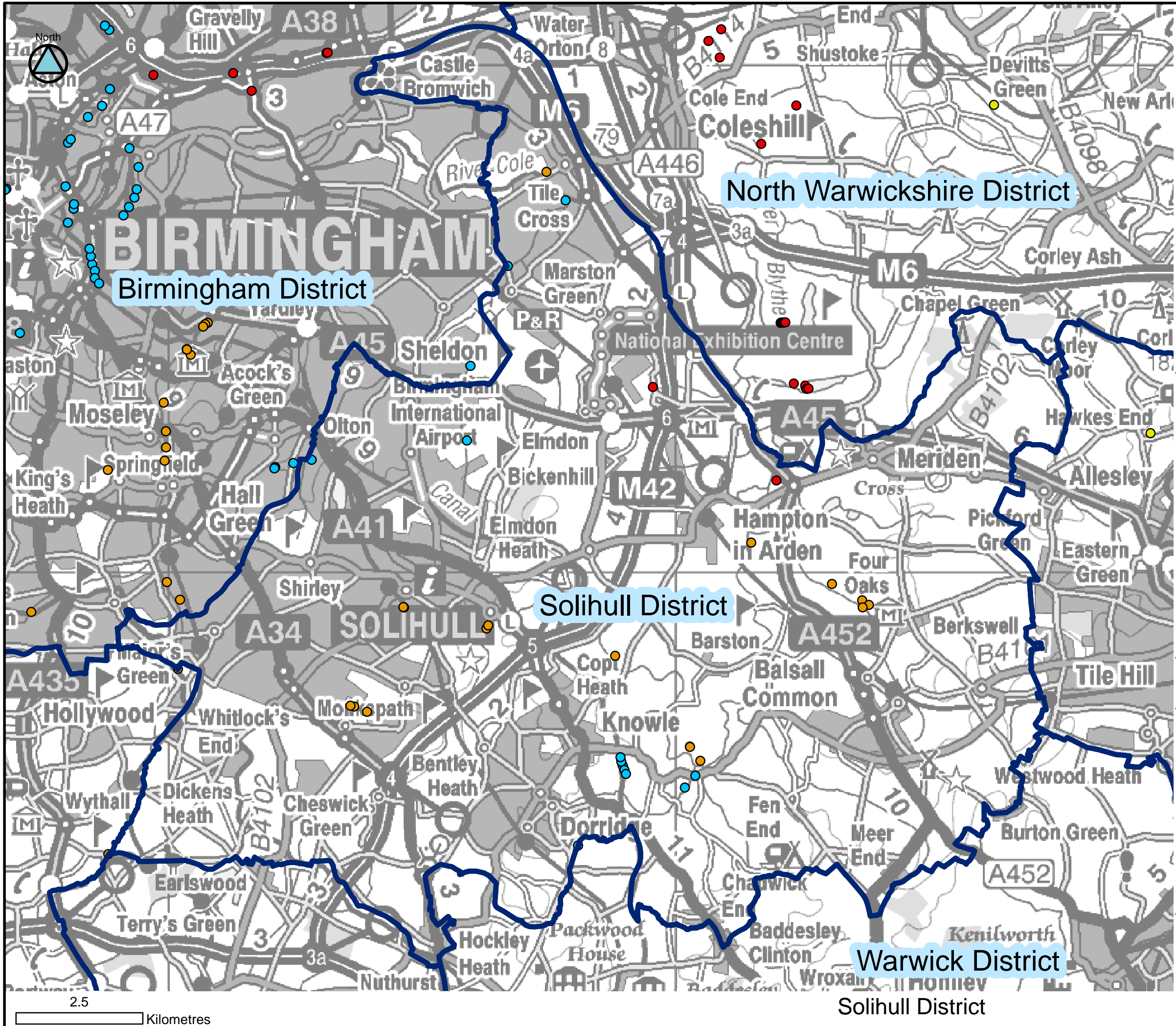
**maslen environmental**  
part of the JBA Group



**SQW**

**co<sub>2</sub>sense™**  
carbon sense 2 commercial sense

**FIGURE A9**  
POWER OUTPUT OF SMALL SCALE HYDROPOWER SITES



**LEGEND**

- West Midlands Region
- Authority Boundaries

**Barriers**

**Sensitivity**

- High
- Medium
- Low
- Unclassified

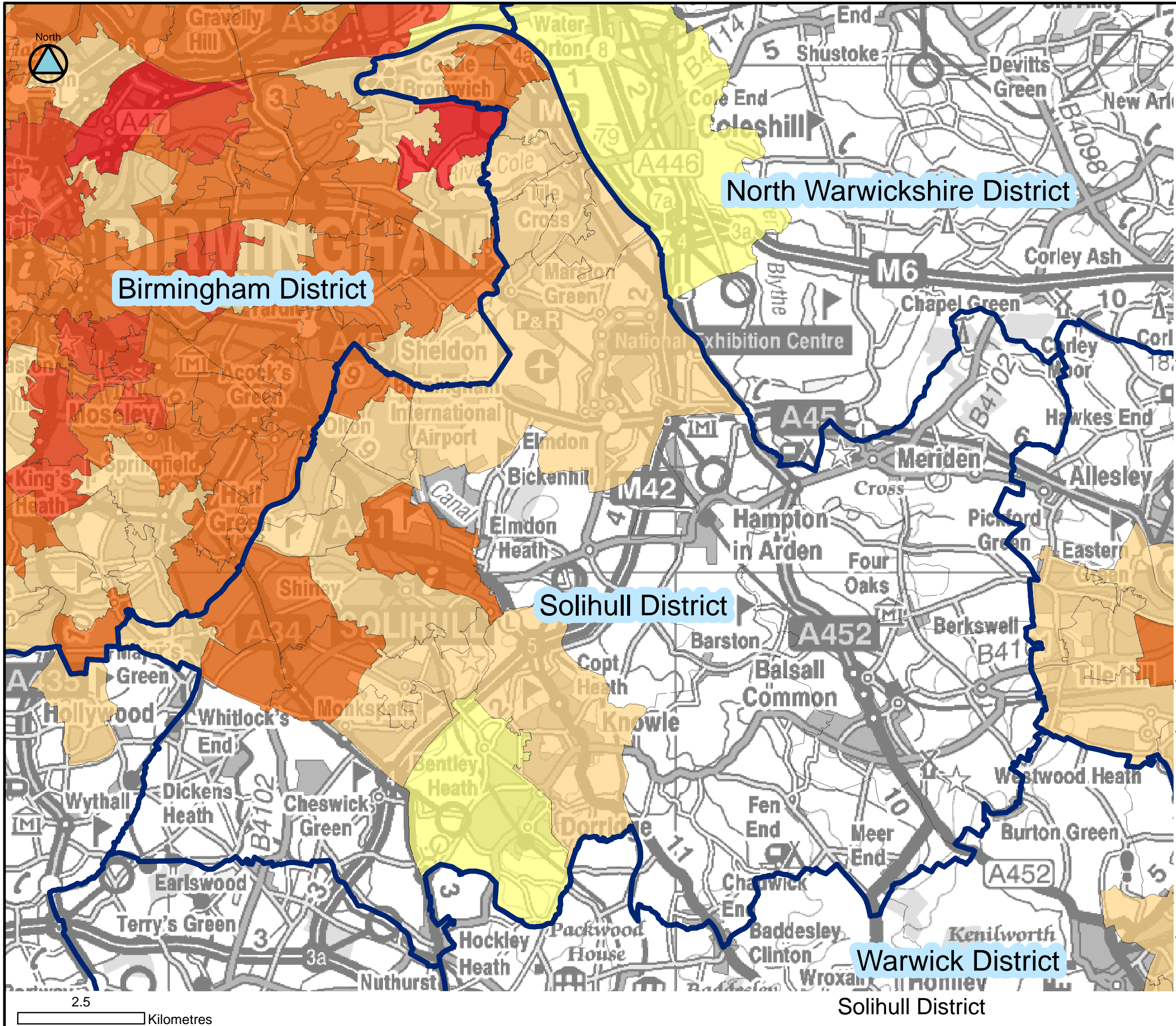
Contains Ordnance Survey data © Crown copyright and database right 2010 and data sourced from the Environment Agency






**FIGURE A10**  
 SMALL SCALE HYDROPOWER  
 SITE SENSITIVITY





**LEGEND**

- West Midlands Region
- Authority Boundaries
- Total Heat Demand kW/km2**
- 0 - 500
- 501 - 1000
- 1001 - 3000
- 3001 - 5000
- 5001 - 10000
- 10001 - 50000

Contains Ordnance Survey data © Crown copyright and database right 2010 and data sourced from ONS and DECC

**maslen**  
environmental  
part of the JBA Group

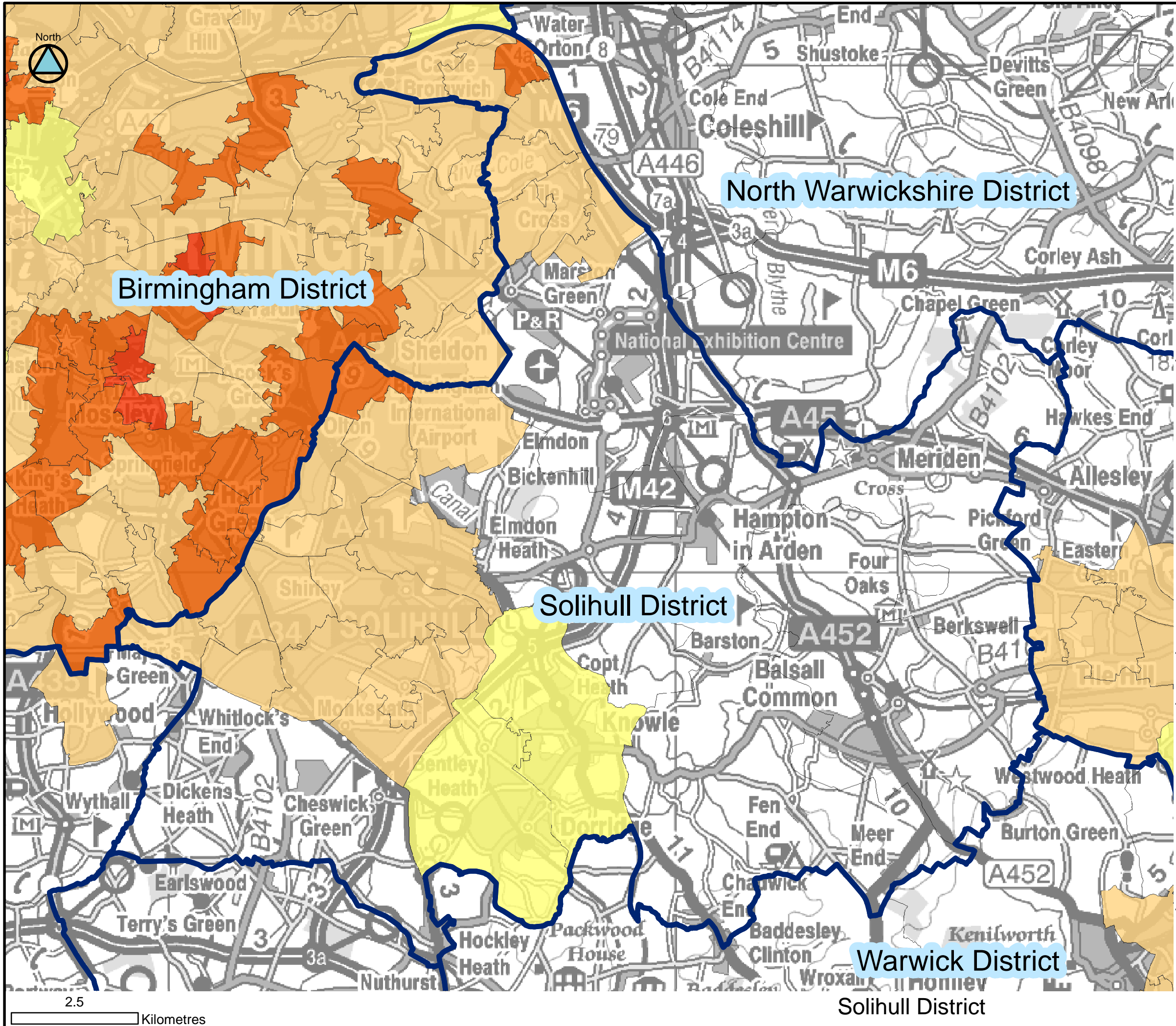


**SQW**

**co<sub>2</sub>sense**<sup>™</sup>  
carbon sense 2 commercial sense

**FIGURE A11**

**TOTAL HEAT DEMAND HEAT MAP**



**LEGEND**

- West Midlands Region
- Authority Boundaries

**Domestic Heat Demand kW/km<sup>2</sup>**

- 0 - 500
- 501 - 1000
- 1001 - 3000
- 3001 - 5000
- 5001 - 10000
- 10001 - 50000

Contains Ordnance Survey data © Crown copyright and database right 2010 and data sourced from ONS and DECC

**maslen environmental**  
part of the JBA Group



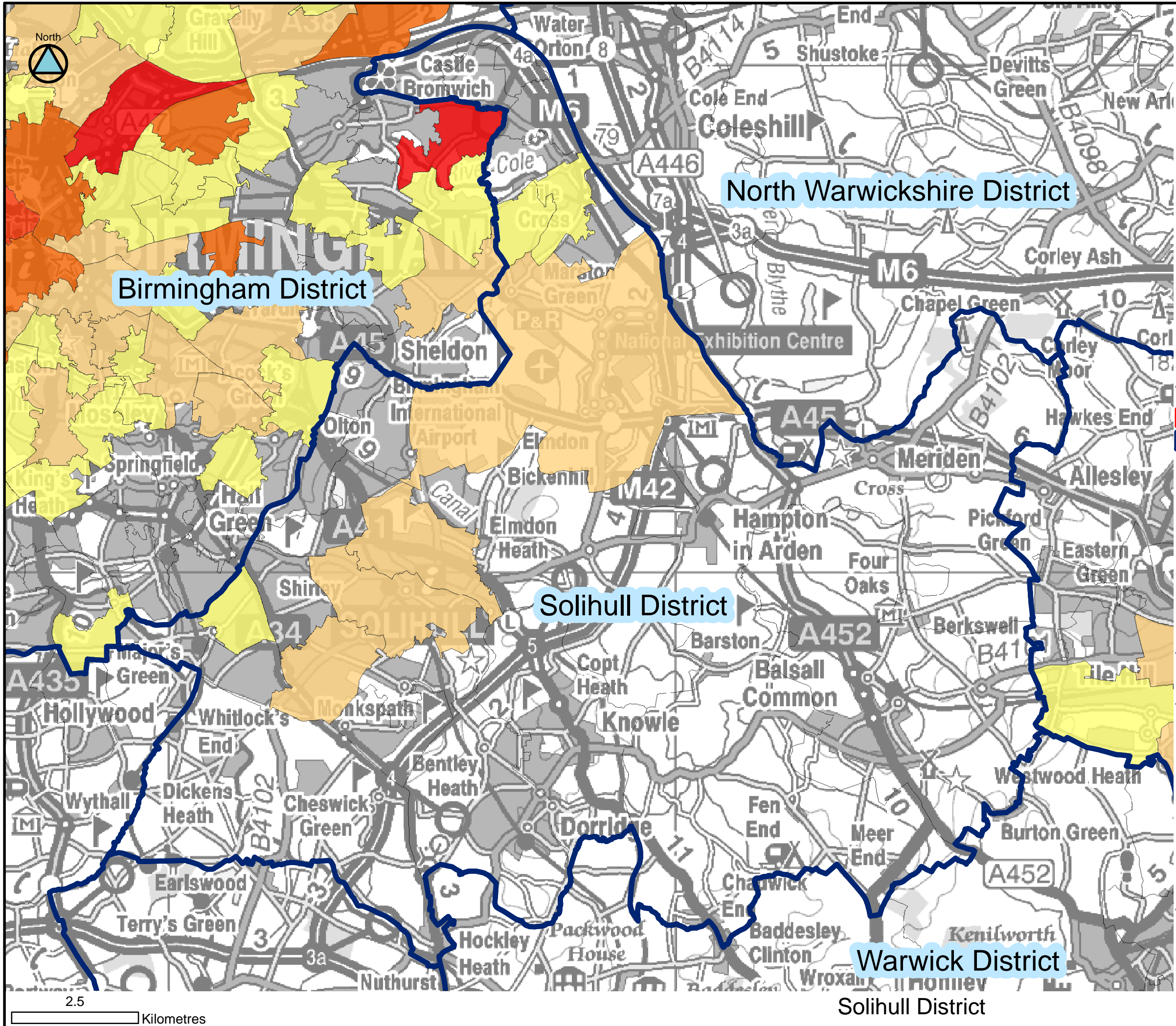
**SQW**

**co<sub>2</sub>sense™**  
carbon sense 2 commercial sense

**FIGURE A12**  
DOMESTIC HEAT DEMAND HEAT MAP

2.5 Kilometres





**LEGEND**

- West Midlands Region
- Authority Boundaries
- Commercial + Industrial Heat Demand kW/km<sup>2</sup>**
- 0 - 500
- 501 - 1000
- 1001 - 3000
- 3001 - 5000
- 5001 - 10000
- 10001 - 11275

Contains Ordnance Survey data © Crown copyright and database right 2010 and data sourced from ONS and DECC




**FIGURE A13**  
 COMMERCIAL HEAT DEMAND  
 HEAT MAP

2.5 Kilometres



