

Working Together

to safeguard adults

in Solihull

CONFERENCE

MONDAY 28TH MARCH 2011

9.30am – 4.00pm

CIVIC SUITE

**SOLIHULL METROPOLITAN BOROUGH
COUNCIL**

BEHIND CLOSED DOORS

Solihull Safeguarding Adults
Solihull NHS Care Trust
3rd Floor, Friars Gate
1011 Stratford Road
Shirley, Solihull B90 4BN
Tel: 0121 713 8890
Website: www.solihull.nhs.uk/adultabuse

SAFEGUARDING VULNERABLE ADULTS FROM ABUSE

Monday 28th March 2011– 9.30am to 4.00pm
Civic Suite, Solihull MBC

Solihull Safeguarding Adults Board’s second conference “Behind Closed Doors” was successfully attended by over 70 people from private, voluntary and statutory sector organisation from Solihull and the West Midlands.



The theme of the Conference was to explore Safeguarding Adults issues which take place ‘behind closed doors’ such as physical abuse, domestic abuse, restraint, institutional abuse and self neglect. Also considered was the complex nature of adult abuse and identify what further work is required to ensure Solihull’s multi-agency practices are sufficient to protect people.

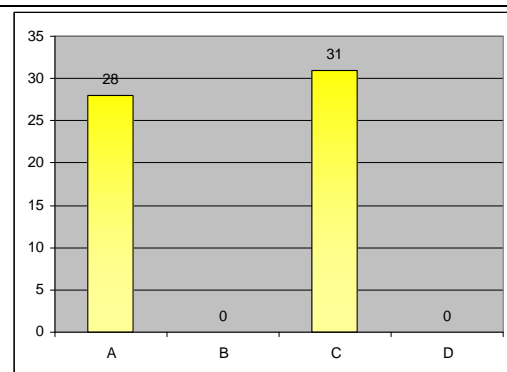
The programme included five presentations in the morning and four workshops in the afternoon. Following each of the presentations the audience were asked to respond to 3-4 questions using an electronic handset voting. Following voting, the results were displayed for the audience to see. In the afternoon everyone had the opportunity to attend two workshops of their choice.

Lindsey Clayton – Regional Development Officer for Skills for Care, opened the conference with a presentation on Dignity and Safeguarding and a powerful DVD entitled “What do you see?” which has been produced to raise awareness about respect for the elderly. (DVD available from www.amandawaring.com/what-do-you-see). Following Lindsey’s presentation the audience was asked:

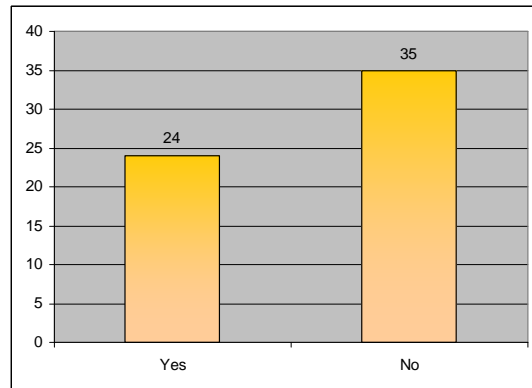
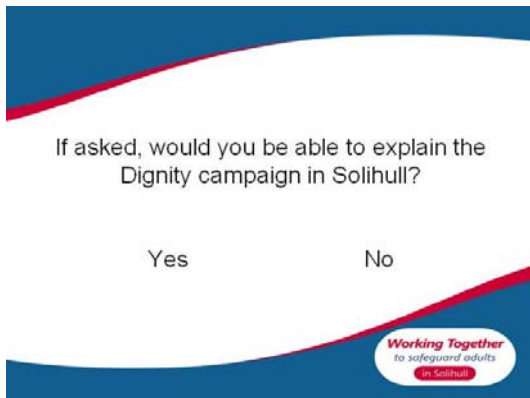
Which of the following do you think best describes Dignity?

- A) Respect
- B) Compassion
- C) Treating others as you wish to be treated
- D) Giving the gift of time

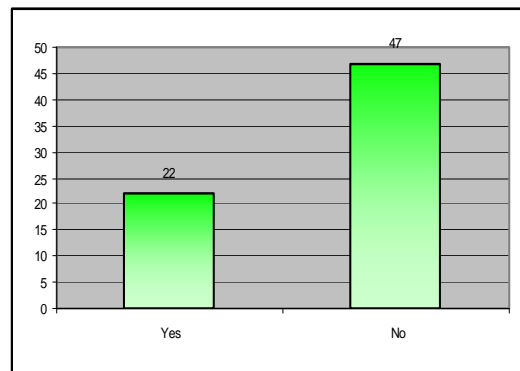
Working Together
to safeguard adults
in Solihull



All of the above defines dignity. Michael Parkinson – Dignity Ambassador states “Dignity is about being treated as an individual with respect and compassion”.



These responses identify a need to raise awareness of Solihull's Dignity Campaign.

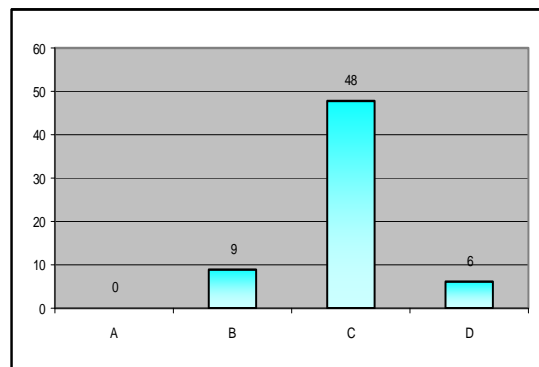
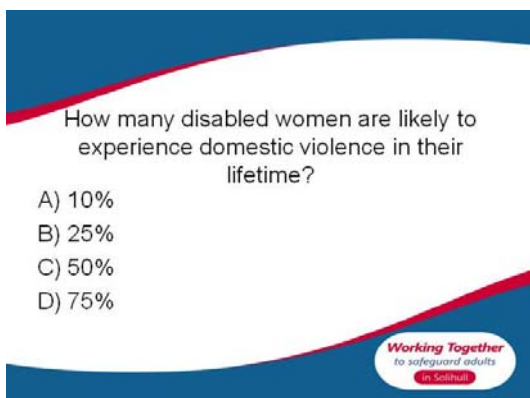


Delegates to this conference were urged to register as Dignity Champions.

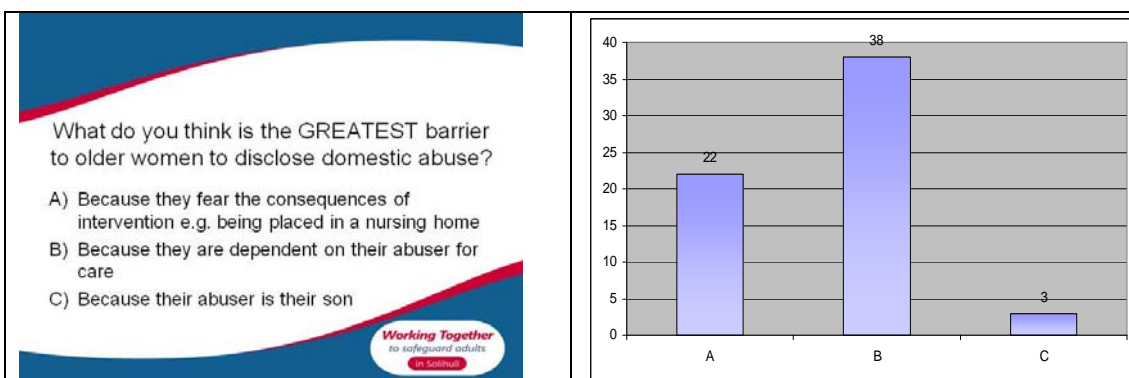
To register as a Dignity Champion go to www.dignityincare.org.uk and register on line or telephone: 0207 9724007.

Our second speaker, Joanne Carter – Women's Aid presented some shocking statistics about Domestic Abuse and Vulnerable Adults and the lack of knowledge in relation to domestic abuse of adults with learning disabilities.

Joanne's presentation was made extremely powerful with quotes from domestic abuse victims who where either elderly or who had a disability. Following this presentation the audience was asked:



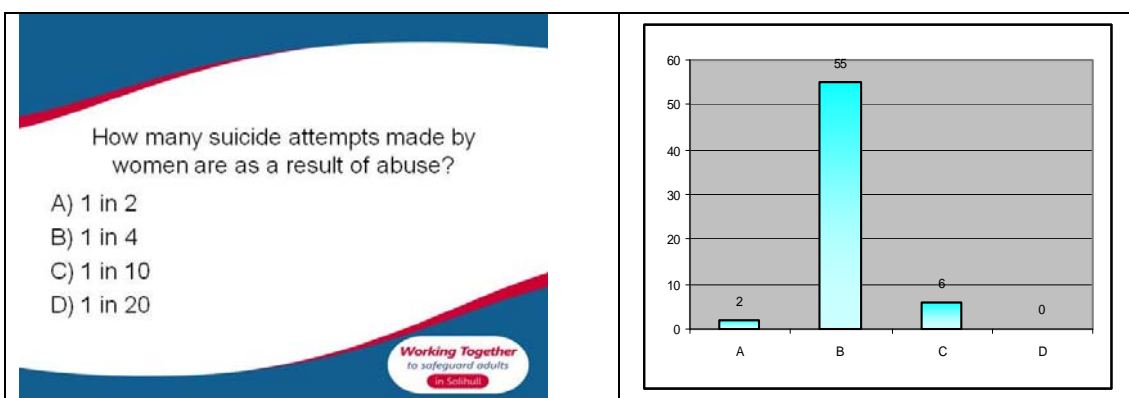
Disabled women are; twice as likely to experience gender-based violence than non-disabled women; likely to experience abuse over a longer period of time and suffer more severe injuries as a result and are less likely to seek help and often the help is not appropriate.



All of the above are barriers to older women reporting domestic abuse.

Domestic abuse is often confused with elder abuse – older victims can be portrayed as vulnerable and in need of medical and social care and if the perpetrator is also old, they are often excused of responsibility.

Older women are seen as not typical domestic abuse victims, face greater barriers and are reluctant to report and face more stigma and shame. They have a fear of financial insecurity and leaving a home of a lifetime.



Domestic violence is a factor in at least 1 in 4 suicide attempts made by women.

70% of psychiatric in-patients have a history of abuse.




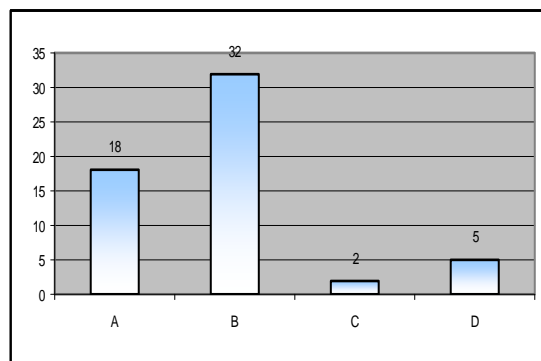
The third speaker was Lyn Andrews – Solihull’s Safeguarding Adults, MCA & DoLS Operational Coordinator who stepped in to present Ralph Hall’s presentation on Restraint/Deprivation. Ralph Hall was the DoLS Implementation Lead for the West Midlands who was unfortunately unable to attend at very late notice.

Lyn presented some national activity data and examples from recent case law which is shaping the way the Mental Capacity Act and DoLS is being used.

Following Lyn’s presentation the audience was asked:

How many DoLS referrals do think Solihull has received this financial year?


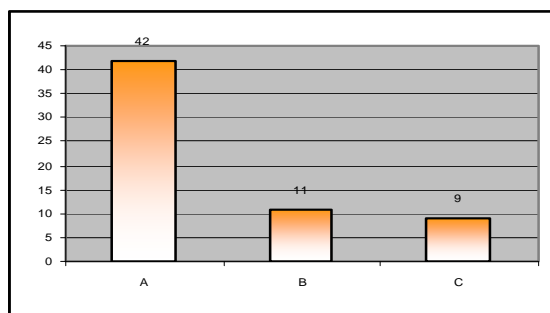
- A) less than 20
- B) between 20 – 50
- C) Between 50 – 75
- D) Over 75

So far this financial year Solihull has received 24 DoLS referrals. Last year we received 23 DoLS referrals.

Initially the Government predicted 20% of all referrals would be from Hospitals. What percentage our Solihull’s referrals so far this year do you think were from hospital?

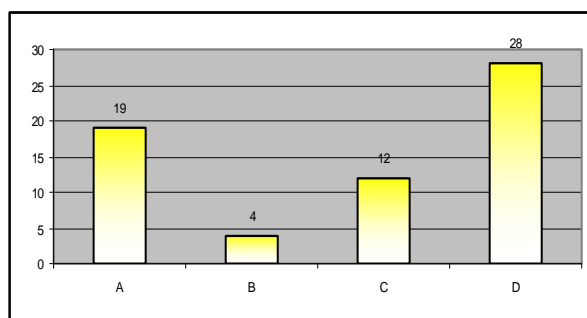
- A) Less than the government estimate of 20%
- B) Around the government estimate of 20%
- C) Higher than the government estimate of 20%

So far this year 6 of the DoLS referrals Solihull has received were from hospitals which equates to 25%. Last year we received 3 DoLS referrals from hospitals.

Solihull has not asked the Court of Protection to rule on any DoLS cases – why do you think this is so?

- A) Lack of people knowledge so never considered
- B) Financial issues – costs too much
- C) Lack of a procedure
- D) There have been no cases requiring application to Court of Protection

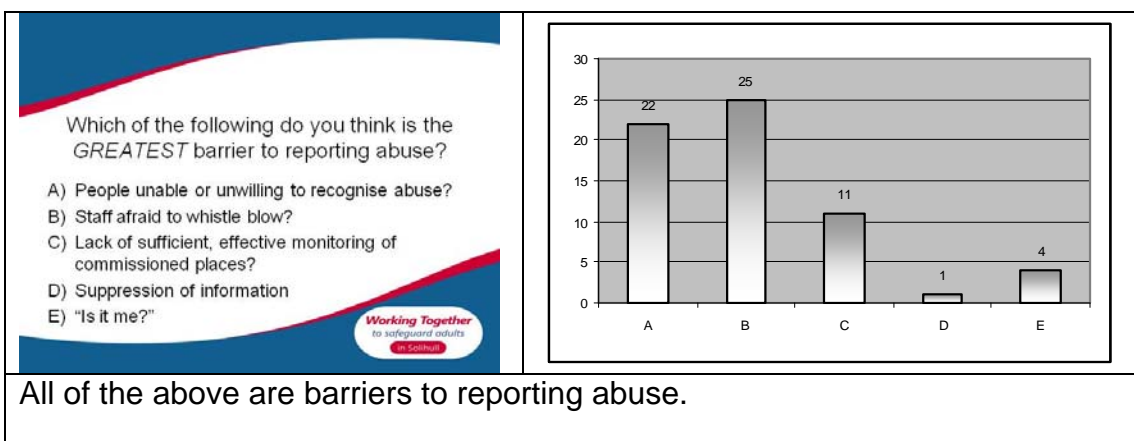
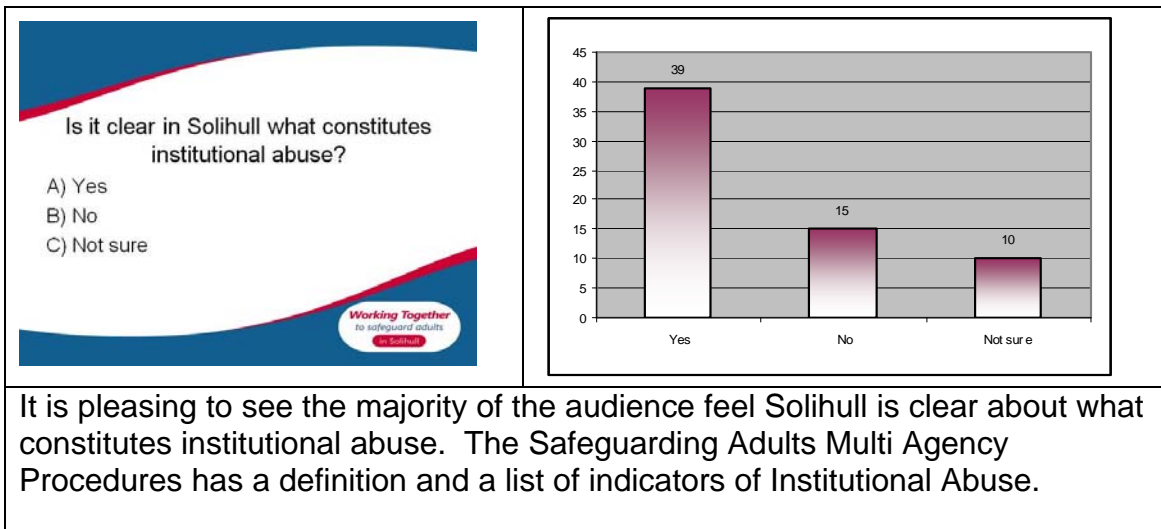



Solihull Metropolitan Borough Council is consulting on guidance in relation to Court of Protection and training is being sourced.

After the coffee break Martin Walsh –Senior Lecturer University of Birmingham and Sandra Knox shared their experiences of when organisations


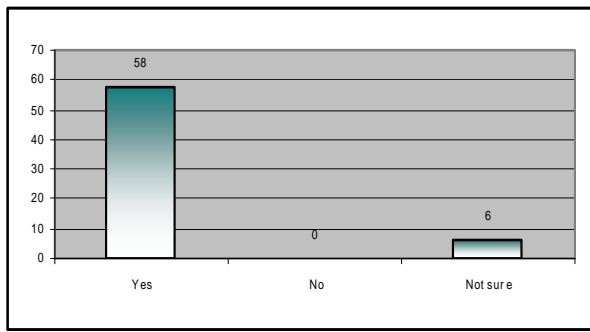
cross the line into abuse. Martin and Sandra identified how agencies make assumptions about adults with learning disabilities and how this affects them individually and how it affects the outcome of safeguarding procedures. Martin and Sandra also raised the very difficult area of “whistle blowing”.

Following Martin and Sandra’s presentation the audience was asked:



If you suspected institutional abuse was happening – would you whistle blow?

- A) Yes
- B) No
- C) Not sure

The very high number of people stating they would whistle blow if they suspected abuse was happening is very positive.


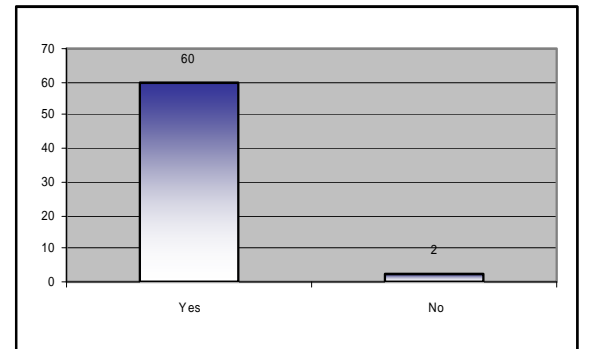
Shirley Williams – Independent Chair of Blackburn and Darwen Safeguarding Adults Board gave the final presentation of the morning on Self Neglect and Service Refuser's: Who needs Safeguarding? Shirley has recently completed a Serious Case Review in relation to Self Neglect and Service Refuser and shared the details and the findings. Shirley's presentation was very well received and very thought provoking.



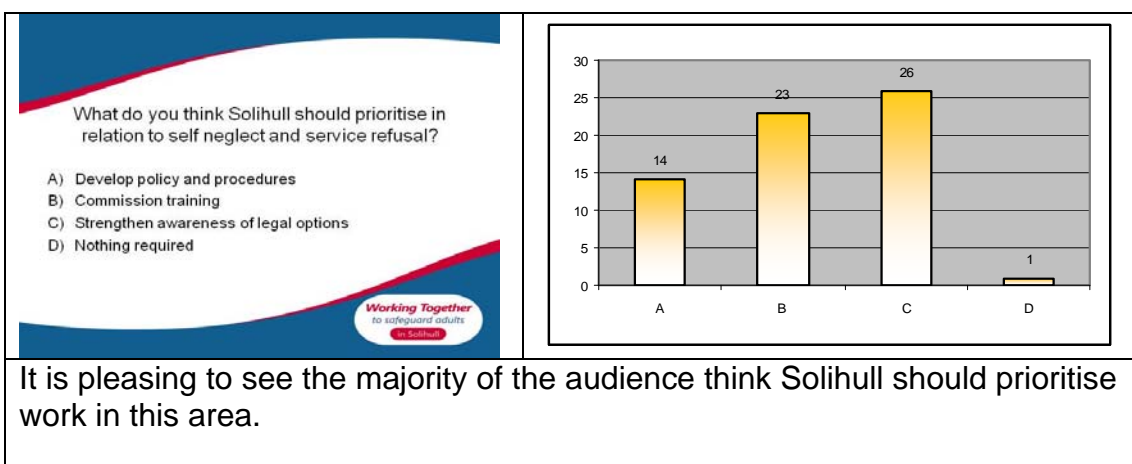
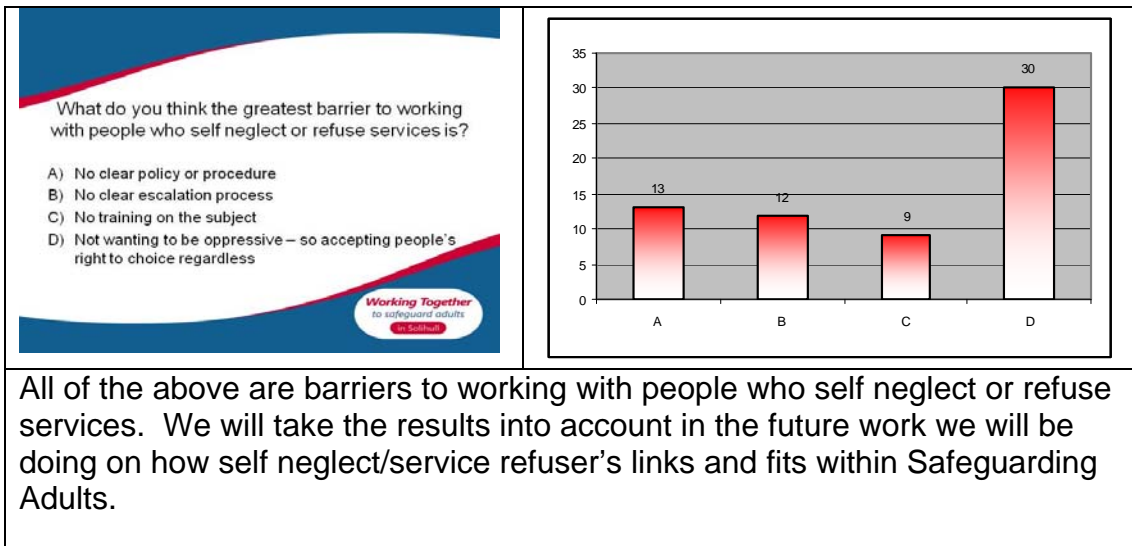
Following Shirley's presentation the audience were asked:

Should self neglect / service refusal fall within the Safeguarding Adults procedures?

Yes No

Solihull will be working on how self neglect / service refuser's links and fits within Safeguarding Adults.



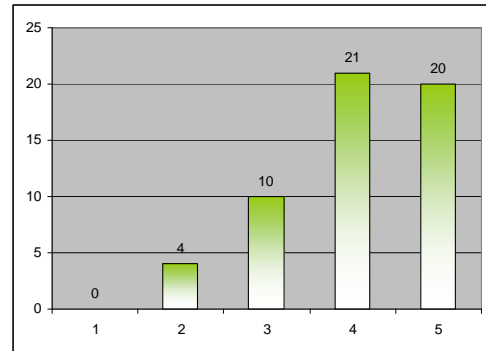
The afternoon workshops were:

- Learning the lessons from Institutional Abuse – facilitated by Martin Walsh and Sandra Knox.
- Challenges of working with people who self neglect or refuse services. What interventions work and can we predict and prevent self-neglect? – facilitated by Shirley Williams and Jeremy Patton.
- Is domestic abuse of vulnerable adults “too hot to handle?” facilitated by Joanne Carter and Nasheima Sheikh from Women’s Aid and Paula Kent SCT Team Manager Disabilities Team.
- When do the scales tip from restriction to deprivation? – facilitated by Lyn Andrews.

At the close of the conference the audience were asked to vote on the following three questions:

How useful was today in raising your awareness of the different types of abuse that occurs behind closed doors.

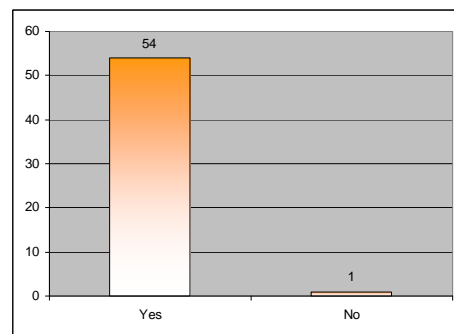
1 —————> 5
Not Very Very



75% of the audience said the Conference was useful in raising their awareness of the different types of abuse that occur behind closed doors, which is very positive.

Has today's conference stimulated your views and thoughts around safeguarding adults?

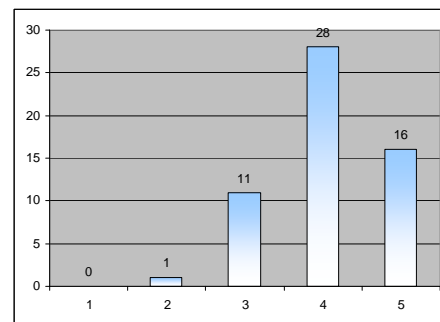
Yes No



All but one person felt the conference had stimulated their views and thoughts around Safeguarding which is very encouraging.

Overall, how would you rate this conference?

1 —————> 5
Poor Excellent



29% of the audience rated the Conference as excellent – score of 5.
50% of the audience rated the Conference as very good – score of 4.
20% of the audience rated the Conference as good with a score of 3.